

Just 872

Lloyd's Register of Shipping.

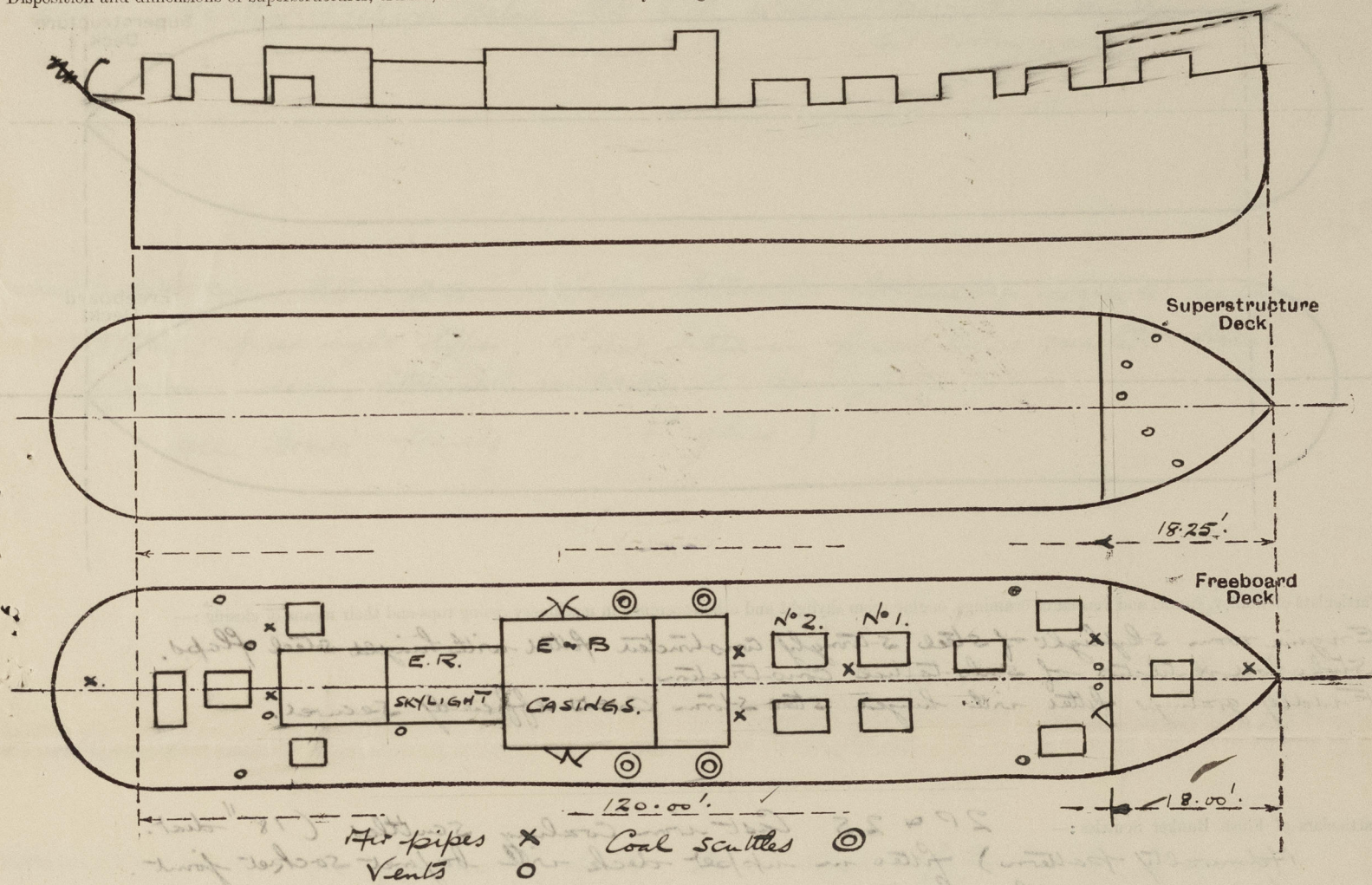
SURVEYS FOR FREEBOARD.

Fbd 5224.

(CONDITIONS OF ASSIGNMENT.)

Ship's Name FRESHWELL Port of Survey Lytham (Liverpool)
Official Number _____ Surveyor's Signature Harry S. Newton 873
Nationality and Port of Registry British, London Date of Survey During construction

Disposition and dimensions of superstructures, trunks, deckhouses and machinery casings to be inserted in the diagrams and tabular statement :—



Particulars of Superstructures, Trunks, Casings, Deckhouses.

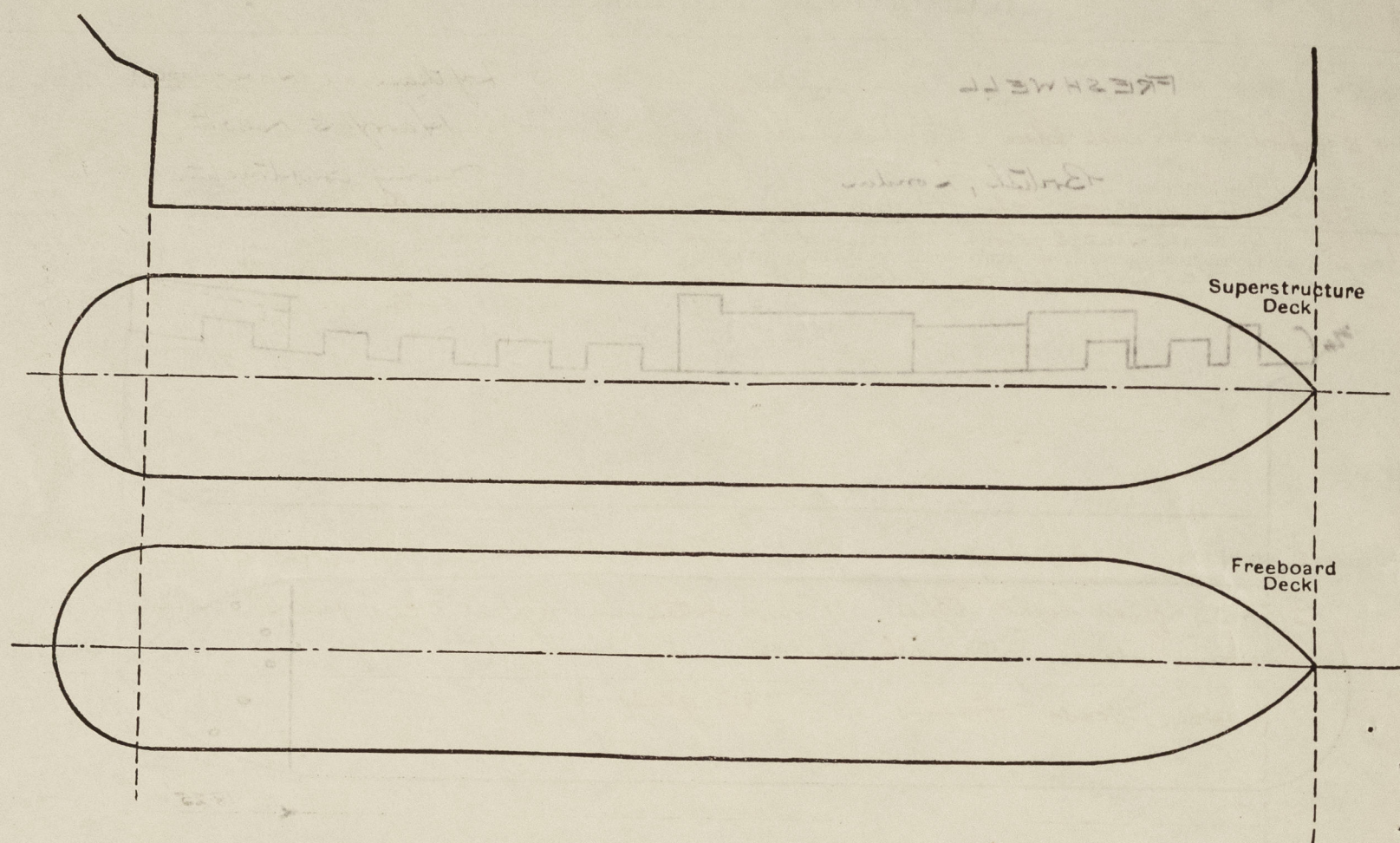
	Coaming	Plating	Stiffeners	Spacing	End Attachments of Stiffeners	Size of Openings	Height of Sills	Height of Casings
Poop Bulkhead ...								
Raised Quarter Deck Bulkhead ...								
Bridge, After Bulkhead ...								
Bridge, Forward Bulkhead ...	14" x .25"	.20"	3" x 2" x .25L	25"-to 30"	Rivets to boundary angles	4'-9" x 2'-0"	14"	6'-6"
Forecastle Bulkhead ...								
Trunk, Aft ...								
Trunk, Forward ...								
Exposed Machinery Casings on Freeboard or Raised Quarter Decks ...	18" x .32"	.27"	3" x 2 1/2" x .30"	30"	3/16" x 1/2" only	4'-6" x 2'-0"	20"	7'-0" & 3'-9"
Exposed Machinery Casings on Superstructure Decks ...								
Machinery Casings within Superstructures not fitted with Class I Closing Appliances ...								
Deckhouses on Flush Deck Ships ...								

Particulars of Closing Appliances (state if capable of being manipulated from both sides).

Poop Bulkhead ...	
Raised Quarter Deck Bulkhead ...	
Bridge, After Bulkhead ...	
Bridge, Forward Bulkhead ...	
Forecastle Bulkhead ...	5-steel hinged door operated both sides ✓
Exposed Machinery Casings on Freeboard or Raised Quarter Decks ...	4 steel hinged doors to machinery & boiler rooms operated both sides ✓
Exposed Machinery Casings on Superstructure Decks ...	
Machinery Casings within Superstructures not fitted with Class I Closing Appliances ...	
Deckhouses on Flush Deck Ships ...	

PARTICULARS OF PROTECTION TO OPENINGS, ETC.

The following diagrams should be used to indicate the positions of cargo and coaling hatchways, gangway, cargo and coaling ports, ventilators, companionways, etc., which would affect the seaworthiness of the ship:—



Particulars of fiddle, funnel and ventilator coamings, engine room skylight and other openings in machinery casing tops and their means of closing:—

Engine room skylight of steel strongly constructed fitted with hinged steel flaps.
Stoke hold ventilator of substantial construction.
Fiddle gratings fitted with hinged steel storm covers affixedly secured.

Particulars of Flush Bunker Scuttles:— 2 P & 2 S Cast iron Coaling Scuttles (18" dia. Admiralty pattern) fitted in upper deck with bajonet socket joint. Lids secured by chains.

Particulars of Companionways:— 1 for giving access to lower deck accommodation. Steel strongly constructed 3'-0" x 2'-6" x 1'-6" fitted with sliding steel plate top & having double hinged steel doors operable both sides.

Particulars of Ventilators in exposed positions on freeboard and superstructure decks:—
On fore-castle deck 2 @ 9" dia x 5/16" coaming 36" to lower deck accom.
" " " 2 @ 4" " mushroom type coaming 8" x 1/4" screw down top.
" " " 1 @ 6" " " " " 9" x 1/4" " " "
upper deck forward 2 @ 7" dia coaming 36" x 1/4" screw down top.
" " " 1 @ 12" " to E.R. coaming 8'-6" x 5/16" efficiently staggered to machinery casing.
" " " 1 @ 12" " " " 36" x 5/16".
" " " 1 @ 8" " " " " 36" x 1/4".
" " " 2 @ 4" " " " " 36" x 1/4" screw down top.

In casing side 2 P & 2 S lower type vents to bunkers. Openings 4" x 5" height above upper deck 4 1/4" & fitted with brass shutters.
Vents fitted with wood plugs & canvas covers.

Particulars of Air Pipes in exposed positions on freeboard, raised quarter, or superstructure decks:—

Fore peak 3" dia. Height to opening 3'-0"
F.W. tanks 5" " " " 2'-0" Height to top 3'-10".
After-peak 3" " " " 3'-0"
Gland amp. 1 1/2" " " " 3'-0".

All pipes fitted with wood plugs & canvas covers.

" FRESHWELL "

Particulars of Gangway Cargo and Coaling Ports:—

None
" Skylight to Accom. (F & A) 3'-6" x 3'-0" x 30" Coaming. Strongly constructed & fitted with two hinged steel flaps secured by screw toggles. Flaps fitted with rubber joints & 3 strong glass lights 7" dia.

Particulars of Scuppers and Sanitary Discharge Pipes:—

Scuppers 6 P & 6 S discharge from deck.
1 P.S. fore bath & wash place 1 1/8" dia discharge freeboard deck open.
1 S.S. " " " " 2" " " " "
1 P.S. Sanitary discharge below floor deck (ford) 4" dia fitted with malleable C.I. storm valve.
1 P.S. aft bath & wash place 1 1/8" dia discharge below floor deck open.
1 S.S. " Sanitary discharge below floor deck 4" dia fitted with malleable C.I. storm valve.

Particulars of Side Scuttles:—

3 P & 3 S 9" dia fitted in fore-castle with C.I. deadlights
2 P & 2 S finer light type. 9" dia fitted in forward cross quarters below freeboard deck, fitted with malleable C.I. deadlights.
(All brass frames. 1" glass.)

Vertical distance of Sill of lowest Side Scuttle above top of keel

12'-0 3/8"

Particulars of Guard Rails:—

On fore-castle deck 3'-0" high fitted with 2 wires & stretching screws. Stanchions spaced 6'-3" apart.

Particulars of Gangways, Lifelines, etc.:—

None.

Particulars of Freeing Arrangements.

	Length of Bulwark	Height of Bulwark	Size of Freeing Ports	Number each side	Area each side	Rule area each side
After Well	102 ft.	3'-0"	2'-9" x 1'-6"	6.	24.75 sq	16.8 sq
Forward Well						

State position of each freeing port (After Well:— From fore-castle bulk head = 12'-6", 26'-6", 39'-11", 57'-1" (F. and A. position and height above deck edge) Forward Well:— 72'-0" & 87'-7". 3 1/2" above deck.)

State whether the freeing ports are fitted with shutters, bars, or rails, and give particulars of such:— One hinged bar.

Additional area where sheer is less than standard.

PARTICULARS OF PROTECTION TO OPENINGS, ETC.

HATCHWAYS ON FREEBOARD AND SUPERSTRUCTURE DECKS.									
Description of Hatchway	
Dimensions of Hatchway	
COAMINGS	Height above Deck	...	18"	...	18"	...	18"
	Thickness30"30"30"
	Stiffeners	...	✓	...	✓	...	✓
	Brackets, Stays	...	✓	...	✓	...	✓
HATCH BEAMS	Number	...	✓	...	✓	...	✓
	Spacing	...	✓	...	✓	...	✓
	Scantling and Sketch	...	✓	...	✓	...	✓
	Bearing Surface	...	✓	...	✓	...	✓
FORE AND AFTERS	Number	...	✓	...	✓	...	✓
	Spacing	...	✓	...	✓	...	✓
	Unsupported Lengths	...	✓	...	✓	...	✓
	Scantling* and Sketch	...	✓	...	✓	...	✓
HATCH COVERS	Material	...	Steel	...	Steel	...	Steel
	Thickness26"26"26"
	How fitted (and)	...	Angled rubber joint 6 toggles	...	Angled rubber joint	...	Angled rubber joint
	Bearing Surface	...	Spaced 16" max.	...	Spaced 16" max.	...	Spaced 16" max.
Spacing of Cleats		...	✓	...	✓	...	✓
Number of Tarpaulins		...	✓	...	✓	...	✓
<p>*Are wood fore and afters steel shod at all bearing surfaces?</p> <p>Are battens and wedges efficient and in good condition?</p> <p>Are tarpaulins in good condition and in accordance with rule requirements?</p> <p>Are lashings provided in accordance with rule requirements?</p>									

Particulars of any special features:—

Vessel is constructed as a special water tank vessel.

Endorsement at first survey and at surveys for renewal of Certificate:—

The fittings and appliances are in accordance with the particulars shown on this form (or as now modified) and are in good condition.



© 2021

Lloyd's Register Foundation