

Jhd 1951 APR 1943

Index No. 37225
(For London Office only).

Lloyd's Register of Shipping.

SURVEYS FOR FREEBOARD.

(CONDITIONS OF ASSIGNMENT.)

Ship's Name "EMPIRE JOAN"

Port of Survey HULL

Official Number

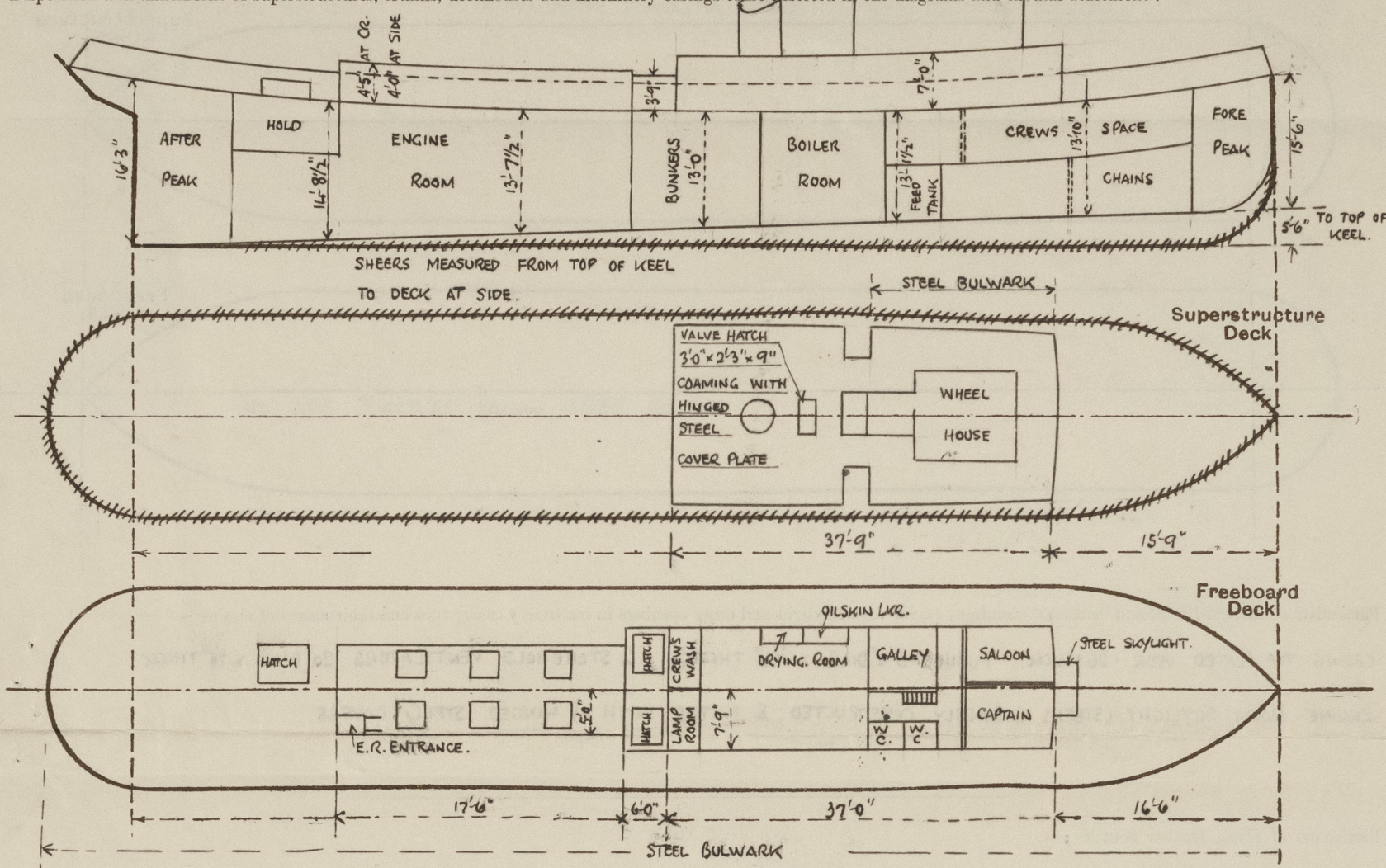
Surveyor's Signature J. Macleod

Nationality and Port of Registry BRITISH - GOOLE

Date of Survey

During construction

Disposition and dimensions of superstructures, trunks, deckhouses and machinery casings to be inserted in the diagrams and tabular statement:—



Particulars of Superstructures, Trunks, Casings, Deckhouses.

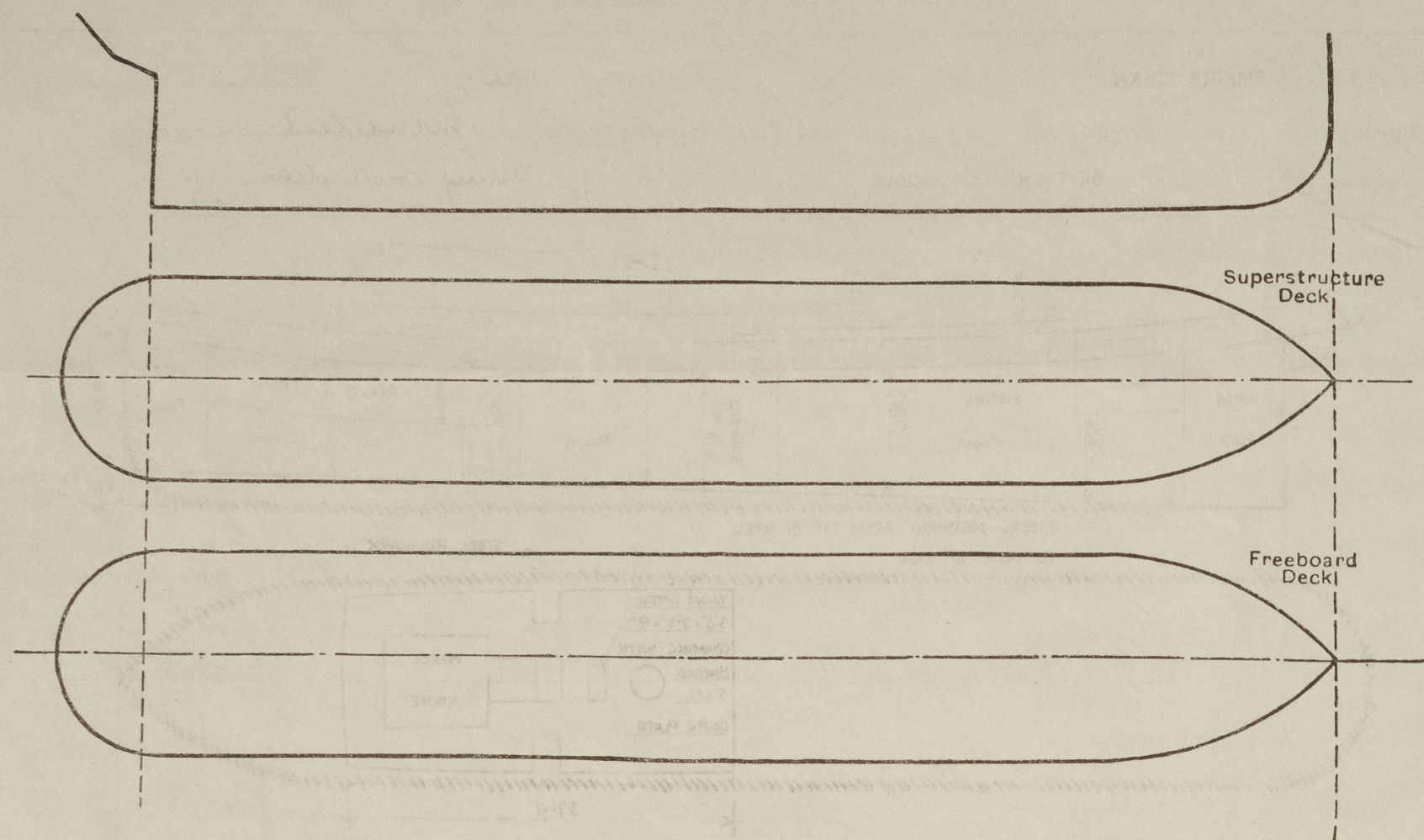
	Coaming	Plating	Stiffeners	Spacing	End Attachments of Stiffeners	Size of Openings	Height of Sills	Height of Casings
Poop Bulkhead ...								
Raised Quarter Deck Bulkhead ...								
Bridge, After Bulkhead ...								
Bridge, Forward Bulkhead ...								
Forecastle Bulkhead ...								
Trunk, Aft (FRS. 20-23/4)28	31 - 26 TOP	3" x 2 1/2" x .305	24"	NONE	4'9" x 4'6" TOP	✓	3'9"
Trunk, Forward ...	✓							
Exposed Machinery Casings on Freeboard or Raised Quarter Deck28	.28	3" x 2 1/2" x .305	30"	BKTS AT TOP	2'6" x 2'6"	18"	4'0"
Exposed Machinery Casings on Superstructure Decks ...	✓							
Machinery Casings within Superstructures not fitted with Class I Closing Appliances ...	✓							
Deckhouses on Flush Deck Ships ...	✓	.26	3" x 2 1/2" x .305	27"	BKTS AT TOP	4'10" x 4'8" x 1'9"	16" 20"	7'0"

Particulars of Closing Appliances (state if capable of being manipulated from both sides).

Poop Bulkhead ...	
Raised Quarter Deck Bulkhead ...	
Bridge, After Bulkhead ...	
Bridge, Forward Bulkhead ...	
Forecastle Bulkhead ...	
Exposed Machinery Casings on Freeboard or Raised Quarter Deck ...	TO BOILER ROOM - STEEL DOOR (P. & S) 4'9" x 1'9" - SILL 19" - OPERATED FROM BOTH SIDES ✓
Exposed Machinery Casings on Superstructure Decks ...	TO ENGINE ROOM - WOOD DOOR 2'6" x 2'6" x 1 1/8" THICK WITH TEAK SLIDING TOP - SILL 18" ✓
Machinery Casings within Superstructures not fitted with Class I Closing Appliances ...	✓
Deckhouses on Flush Deck Ships ...	TO SALOON PASSAGE (P. & S) WOOD DOORS 4'8" x 1'9" - 20" SILL. TO GALLEY (PORT SIDE) STEEL DOOR 4'10" x 1'9" - 16" SILL. TO OILSKIN LOCKER & DRYING ROOM (PORT SIDE) STEEL DOORS WITH 20" SILLS. TO CREWS WASH PLACE, STEEL DOOR WITH 19" SILL. TO W.C. & LAMP ROOM (S.S) STEEL DOORS WITH 18 1/2" SILLS. ✓ ALL OPERATED FROM BOTH SIDES.

EMPIRE JOAN

Particulars of Gangway Cargo and Coaling Ports :—



CASING TOP PLATED OVER .26 THICK. ✓ FUNNEL 5'0" DIAR. X $\frac{3}{16}$ " THICK. ✓ 2 STROKEHOLD VENTILATORS 20" DIAR. X $\frac{1}{8}$ " THICK. ✓

ENGINE ROOM SKYLIGHT (STEEL) STRONGLY CONSTRUCTED & FITTED WITH 3 HINGED STEEL COVERS. ✓

ONE (PORT & STBD) TO SIDE BUNKERS - WOOLLON'S NO 2 TYPE - 20" DIAM. & FITTED WITH CHAIN ATTACHMENT.

UPPER DECK TO ENGINE ROOM (STBD. SIDE) AFTER END CASING. 2'-6" x 2'-6" WITH TEAK HINGED DOORS & TEAK SLIDING TOP. ✓

9" DIAR. FRENCH HEAD VENT. ON SKYLIGHT AT FORWARD END OF DECKHOUSE - 2'0" TO OPENING - COAMING 5/16" THICK. ✓

2- G.N. VENTS. 5" DIAM. TO CREW'S SPACE FORWARD. (P. & S). 16" TO OPENING. ✓ CANVAS COVERS SUPPLIED FOR FRENCH

1 G.N. VENT. 5" DIAR. TO CHIEF ENG^B & MATE'S CABIN (P. & S). 16" TO OPENING. ✓ HEAD VENTILATORS. ✓

7" DIAR. FRENCH HEAD VENT. TO ENGINE ROOM (S.S.) 36" TO OPENING. ✓ WOOD PLUGS SUPPLIED FOR G.N. VENTS. ✓

7" DIAR. MONARCH EXTRACTOR VENT. ON E.R. TOP (AFTER END) 5 1/2" TO OPENING.

BRIDGE DECK. 3 G.N. VENTS (PORT) & 2 G.N. VENTS. (S.S.) 5" DIAR. & 16" TO OPENING. ✓

UPPER DECK. TO FORE PEAK TANK - 2" DIAR. & 3'0" TO OPENING. PROTECTED BY BULWARK.

TO STORE ROOM (P.B.S.) - 2" " 2 1/2" " " " " " ✓

" FRESH WATER TANK (P. & S) 2" DIAR. (AIR & FILLING PIPE) - 2'-1" TO OPENING - PROTECTED BY BULWARK. ✓

" BOILER FEED TANK (P. & S). 2" DIAR. 2'1" TO OPENING. PROTECTED BY BULWARK. ✓

" AFTER PEAK TANK (P. 85). 2" " - 2'6" " "

AIR PIPES SUPPLIED WITH WOOD PLUGS. ✓

NONE.

SCUPPERS. 5-2 1/2" DIA. SCUPPER PIPES LED OVERBOARD THRO' SHIP'S SIDE (P. 85). 1'-7" FROM DECK TO BOTTOM OF OPENING. ✓

DISCHARGES. 1-4" DIAR. BRASS STORM VALVE TO W.C. (STBD. SIDE) 1'-4" FROM DECK TO BOTTOM OF OPENING. ✓

1-2" " " " TO CREW'S WASH PLACE (PORT SIDE) 1'-2" FROM DECK TO BOTTOM
OF OPENING. ✓

NO SIDE SCUTTLES BELOW UPPER DECK.

Vertical distance of Sill of lowest Side Scuttle above top of keel

STEEL BULWARK ON UPPER DECK. ✓

NONE.


Particulars of Freeing Arrangements.						
	Length of Bulwark	Height of Bulwark	Size of Freeing Ports	Number each side	Area each side	Rule area each side
After Well	95'-0" ✓	3'-0" TO 4'-0" AT STEM ✓	2'-6" x 1'-4" ✓	3 ✓	9.98 f	19.0 f
Forward Well						

State position of each freeing port (After Well :— FROM A.P. — 21'-0" — 42'-6" — 62'-0"

(F. and A. position and height above deck edge) (Forward Well :— 7 1/2" ABOVE DECK EDGE.

State whether the freeing ports are fitted with shutters, bars, or rails, and give particulars of such :— 2 BARS 7/8" DIAM. 5 1/2" APART.

Additional area where sheer is less than standard.



© 2021
Lloyd's Register
Foundation

008784-008795-0220 2/2

PARTICULARS OF PROTECTION TO OPENINGS, ETC.

HATCHWAYS ON FREEBOARD AND SUPERSTRUCTURE DECK & TRUNK TOP.											
				UPPER DECK.		TRUNK TOP.					
Description of Hatchway				TO HOLD	AFT.	TO COAL BUNKERS					
Dimensions of Hatchway				3'9" x	3'6"	4'9" x	4'6"				
COAMINGS	{	Height above Deck	18"	✓	4'3"	✓				
		Thickness	3/8"	✓	6" x 3" x 405	✓				
		Stiffeners	3/8"	✓						
		Brackets, Stays	NONE	✓	NONE					
HATCH BEAMS	{	Number								
		Spacing								
		Scantling and Sketch	NONE	✓	NONE					
		Bearing Surface								
FORE AND AFTERS	{	Number								
		Spacing								
		Unsupported Lengths								
		Scantling* and Sketch	NONE	✓	NONE	✓				
HATCH COVERS	{	Material	PINE	✓	PINE	✓				
		Thickness	3"	✓	3"	✓				
		How fitted	THWARTSHIPS	✓	THWARTSHIPS	✓				
		Bearing Surface	3"	✓	3"	✓				
Spacing of Cleats				20"	✓	24"	✓				
Number of Tarpaulins				2	✓	2	✓				
<p>*Are wood fore and afters steel shod at all bearing surfaces? <i>yes.</i> ✓</p> <p>Are battens and wedges efficient and in good condition? <i>yes.</i> ✓</p> <p>Are tarpaulins in good condition and in accordance with rule requirements? <i>yes.</i> ✓</p> <p>Are lashings provided in accordance with rule requirements? <i>yes.</i> ✓</p>											

Particulars of any special features :—

Endorsement at first survey and at surveys for renewal of Certificate :—

The fittings and appliances are in accordance with the particulars shown on this form (or as now modified) and are in good condition.

