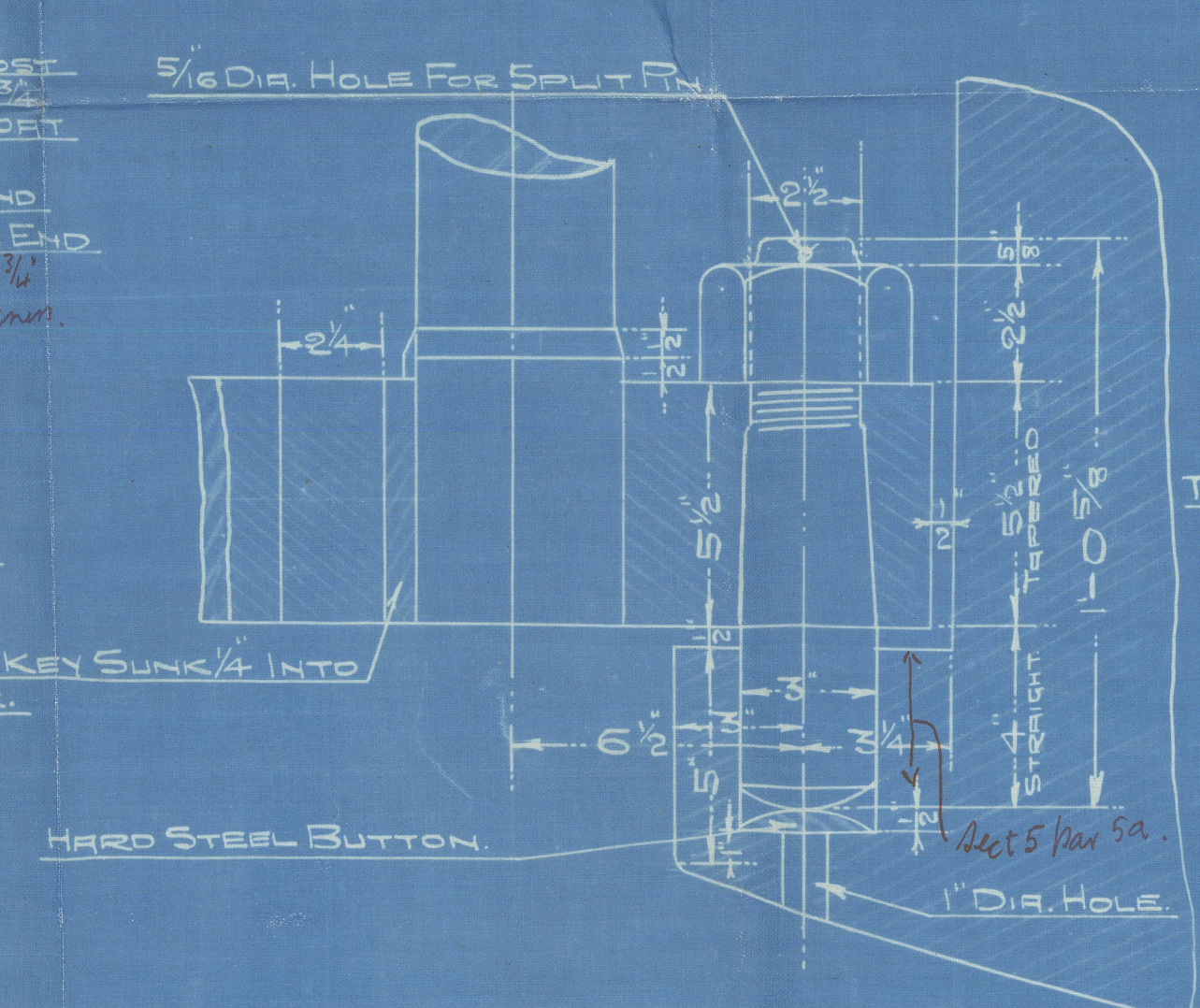


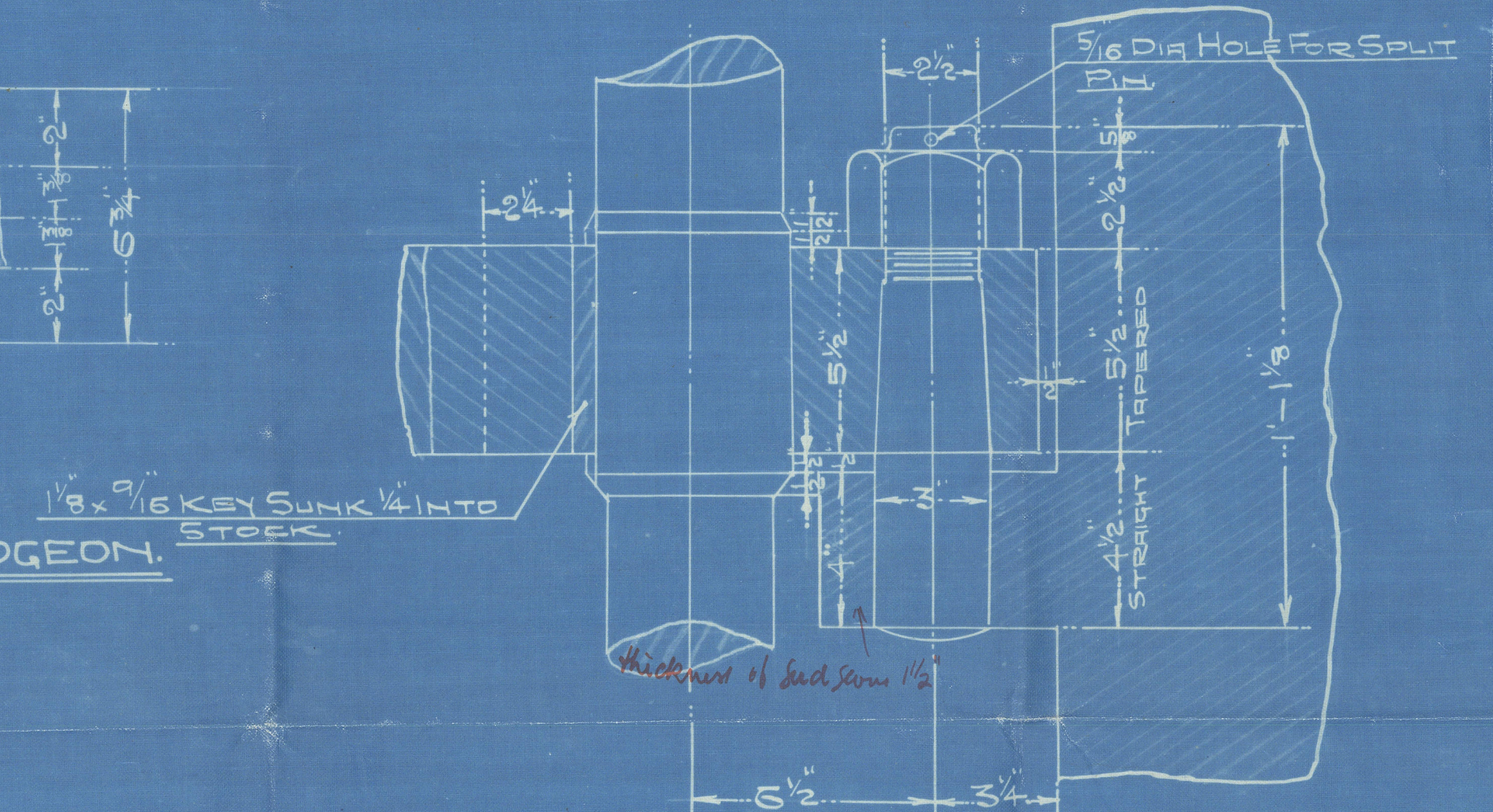
DETAIL OF TOP ARM, PINTLE & GUDGEON.



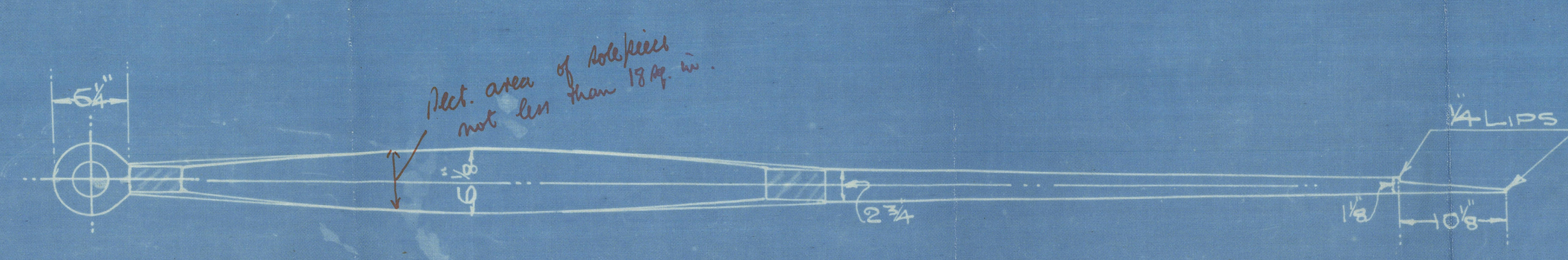
DETAIL OF HEEL PINTLE & GUDGEON.

V.N^o.135. STERNFRAME & RUDDER.

SCALES: - 1 inch & 3 inches = 1 FOOT.
ALL TO LLOYDS TESTS AND REQUIREMENTS.
 $H \times D = 39.6 \times 2.6 = 102.96 = 5''$ RUDDER HEAD.
RUDDER HEAD BEING MADE $5\frac{1}{2}''$.
STERNFRAME TO BE MADE OF FORGED IRON.
20/11/25.
A.R.
Speed not exceeding 10 knots



DETAIL OF INTERMEDIATE, PINTLES, ARMS & GUDGEONS.



Cran x Somerville Ltd.

V. No. 135.

Sternframe & Rudder.

of Maurice



© 2021

Lloyd's Register
Foundation

008778-008785-0225