

# Lloyd's Register of Shipping.

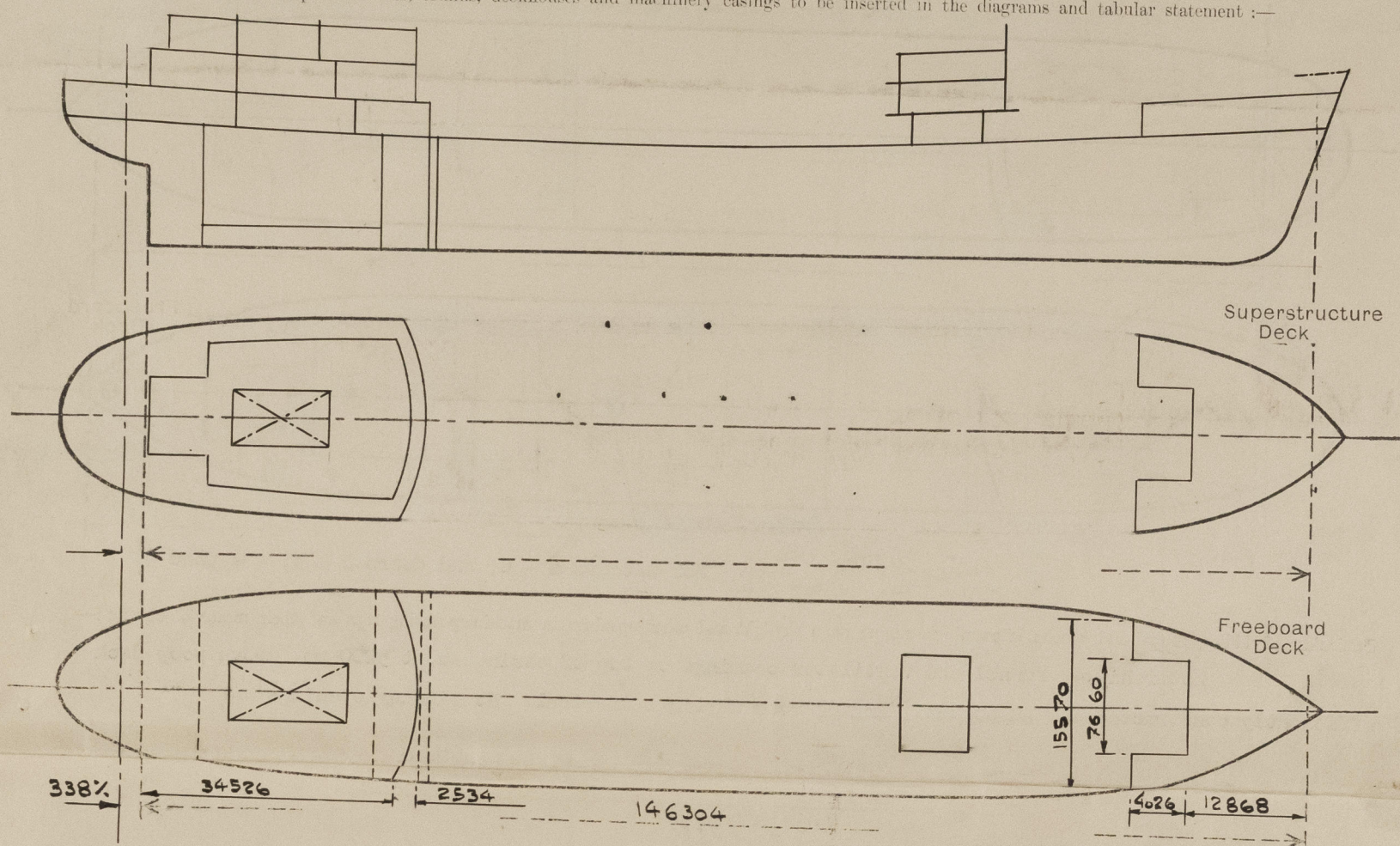
## SURVEYS FOR FREEBOARD.

### (CONDITIONS OF ASSIGNMENT.)

 Index No. 42199  
 (For London Office only.)

Ship's Name ISLAS MALVINAS Port of Survey Uddevalla  
 Official Number ----- Surveyor's Signature *K. H. L. L.*  
 Nationality and Port of Registry Argentine, Buenos Aires. Date of Survey During construction

Disposition and dimensions of superstructures, trunks, deckhouses and machinery casings to be inserted in the diagrams and tabular statement:—

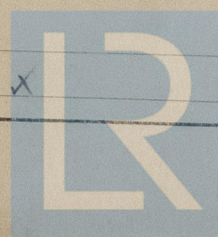


Particulars of Superstructures, Trunks, Casings, Deckhouses.

	Coaming	Plating MM.	Stiffeners MM.	Spacing MM.	End Attachments of Stiffeners	Size of Openings MM.	Height of Sills MM.	Height of Casings MM.
Poop Bulkhead ...	---	11.0 ✓	229 x 102 x 13 ✓	736/766 ✓	Welded top and bottom ✓	1430 x 630 ✓	610 x	2440 x
Raised Quarter Deck Bulkhead ...								
Bridge, After Bulkhead ...								
Bridge, Forward Bulkhead...								
Forecastle Bulkhead...	---	7.5 ✓	100 x 76 x 8 ✓	736/840 ✓	Welded top and bottom ✓	2 á 1430x610 ✓ 2 á 1525x920 ✓	600 ✓	2440 x
Trunk, Aft ...								
Trunk, Forward ...								
Exposed Machinery Casings on Free- board <del>Deck</del> Deck...	None							
Exposed Machinery Casings on Super- structure Decks ...	None							
Machinery Casings within Superstruc- tures not fitted with Class I Closing Appliances ...								
<del>Pump Room Entrance House</del>	---	11.0 ✓	127 x 89 x 9.5 ✓	575/675 ✓	None ✓	1420 x 620 ✓	610 x	3500 x

Particulars of Closing Appliances (state if capable of being manipulated from both sides).

Poop Bulkhead ...	Hinged watertight steel doors, operable from both sides. ✓
Raised Quarter Deck Bulkhead ...	---
Bridge, After Bulkhead ...	---
Bridge, Forward Bulkhead ...	---
Forecastle Bulkhead...	Hinged steel doors and portable steel plates, secured by hook bolts not passing through bhd ✓
Exposed Machinery Casings on Free- board or Raised Quarter Decks ...	---
Exposed Machinery Casings on Super- structure Decks ...	---
Machinery Casings within Superstruc- tures not fitted with Class I Closing Appliances ...	---
<del>Pump Room Entrance House</del>	Hinged watertight steel door, operable from both sides. x



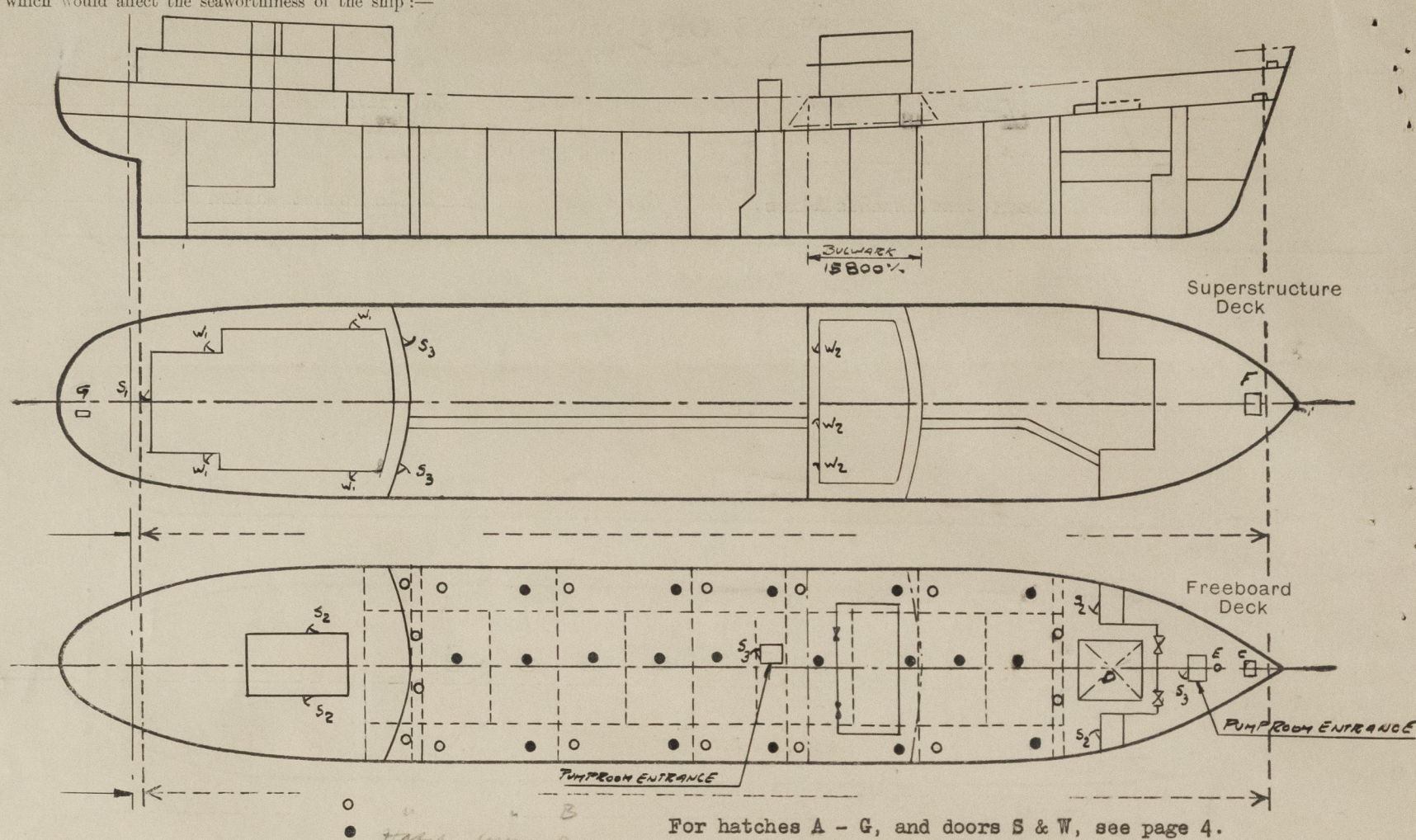
© 2021

 Lloyd's Register  
 Foundation



# PARTICULARS OF PROTECTION TO OPENINGS, ETC.

The following diagrams should be used to indicate the positions of cargo and coaling hatchways, gangway, cargo and coaling ports, ventilators, companionways, etc., which would affect the seaworthiness of the ship:—



Particulars of filley, funnel and ventilator coamings, engine room skylight and other openings in machinery casing tops and their means of closing:—

Motorship.— Funnel and ventilator coamings on top of casing about 5200 mm. above poop deck efficiently constructed and supported. Engine room skylight of steel. No fiddle openings.

Particulars of Flush Bunker Scuttles:—  
None.

Particulars of Companionways:—

Forward pump room entrance house in forecastle with opening 1410 x 610 mm. and 610 mm. sill and hinged watertight steel door. *CLOSED AND SECURED FROM BOTH SIDES.*

Particulars of Ventilators in exposed positions on freeboard and superstructure decks:—

All ventilators on freeboard and superstructure decks are efficiently constructed and supported with coamings 915 mm. in height or above. All provided with means of closing.

Particulars of Air Pipes in exposed positions on freeboard, raised quarter, or superstructure decks:—

All air pipes on freeboard and forecastle decks are 915 mm. in height or above, and on poop deck 465 mm. in height or above. All of steel of gooseneck type and provided with means of closing.

"ISLAS MALVINAS".

Particulars of Gangway Cargo and Coaling Ports:—

None.

Particulars of Scuppers and Sanitary Discharge Pipes:—

Sanitary discharges and scuppers from bridge house accommodation led overboard above upper deck and fitted with non-return valve at the ship's side.

Sanitary discharges and scuppers from accommodation in poop and on poop deck led over board about 1000 mm. above LWL in engine room and fitted with non-return valve at the ship's side.

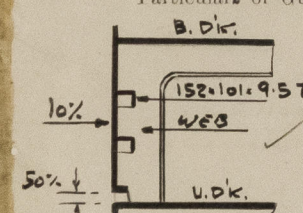
Scuppers from accommodation in poop and on poop deck led to engine room bilges and fitted with water trap.

Particulars of Side Scuttles:—

Side scuttles strongly constructed of brass with hinged deadlights fitted in poop and forecastle.

Vertical distance of Sill of lowest Side Scuttle above top of keel 3800 mm.

Particulars of Guard Rails:—

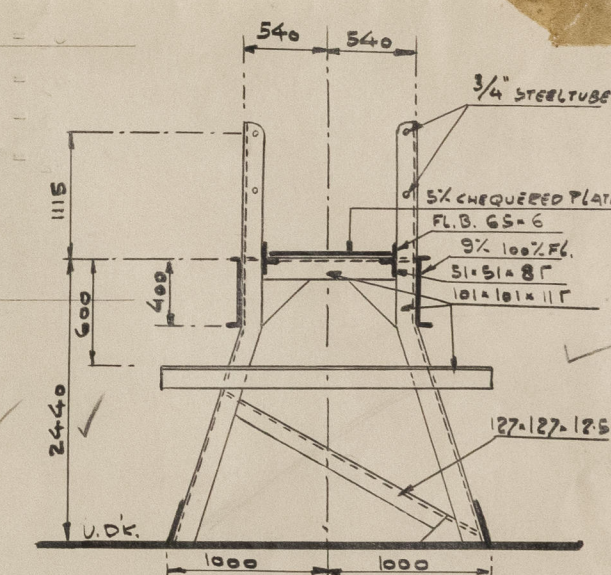


Open rails on upper deck, poop deck and fore-castle deck 1070 mm. in height with 3 rods and stanchions about 1500 mm. apart, supported at every 3rd to 4th stanchions. Bulwark fitted on upper deck in way of bridge house.

Particulars of Gangways, Lifelines, etc.:—

Gangway fitted from poop to bridge house and from bridge house to forecastle with supports as per sketch about 3160 mm. apart and welded to deck.

Guard rails with 2 rods and stanchions spaced about 1600 mm.



Particulars of Freeing Arrangements.

	Length of Bulwark	Height of Bulwark	Size of Freeing Ports	Number each side	Area each side	Rule area each side
After Well ... ..	Open					
Forward Well ... ..						

State position of each freeing port ... .. { After Well:—  
(F. and A. position and height above deck edge) { Forward Well:—

State whether the freeing ports are fitted with shutters, bars, or rails, and give particulars of such:—

Additional area where sheer is less than standard.



# PARTICULARS OF PROTECTION TO OPENINGS, ETC.

HATCHWAYS ON FREEBOARD AND SUPERSTRUCTURE DECKS.									
		A	B	C	D	E	F	G	
Description of Hatchway		Main cargo tank hatch	Vent. hatch	F.P. store	Dry cargo hold	F.P. store	Forecastle	Poop store	
Dimensions of Hatchway		1770x670	650 x 510	1200x1200	568x456	450 x 350	580x580	600 x 400	
COAMINGS	Height above Deck	800 ✓	200	230 ✓	800 ✓		630 ✓	100 ✓	
	Thickness	10 ✓	10	10 ✓	11 ✓		10 ✓	10 ✓	
	Stiffeners	2 á 75x10			150x90x10				
	Brackets, Stays				1 ✓				
HATCH BEAMS	Number								
	Spacing								
	Scantling and Sketch								
	Bearing Surface								
FORE AND AFTERS	Number				Tr. stiff				
	Spacing				200x100x11				
	Unsupported Lengths				á 637/660				
	Scantling* and Sketch				2 long stiff.				
HATCH COVERS	Material	Steel	Steel	Steel	Steel	Steel	Steel	Steel	
	Thickness	15 ✓	15 ✓	8 stiff.	7.5	10 ✓	8 ✓	15 ✓	
	How fitted	Hinged WT	Hinged WT	Hinged WT	von Tell	Manhole cover	Hinged WT	Hinged WT	
	Bearing Surface								
Spacing of Cleats or Toggles		14 toggles	6 toggles	2 hinges	580 mm.	14 bolts	2 hinges	6 toggles	
Number of Tarpaulins				4 toggles		á 3/4	4 toggles		
<p>*Are wood fore and afters steel shod at all bearing surfaces? ---</p> <p>Are battens and wedges efficient and in good condition? ---</p> <p>Are tarpaulins in good condition and in accordance with rule requirements? ---</p> <p>Are lashings provided in accordance with rule requirements? ---</p>									

Particulars of any special features:—

Hatches A - G, and doors S & W (See sketch page 2).

- S<sub>1</sub> = Steel hinged door, sill 460 mm., ✓
- S<sub>2</sub> = Steel hinged door, ✓
- S<sub>3</sub> = Steel hinged watertight door, sill 610 mm., ✓
- W<sub>1</sub> = Wood hinged door, sill 460 mm., ✓
- W<sub>2</sub> = Wood hinged door. ✓



© 2021

Lloyd's Register  
Foundation