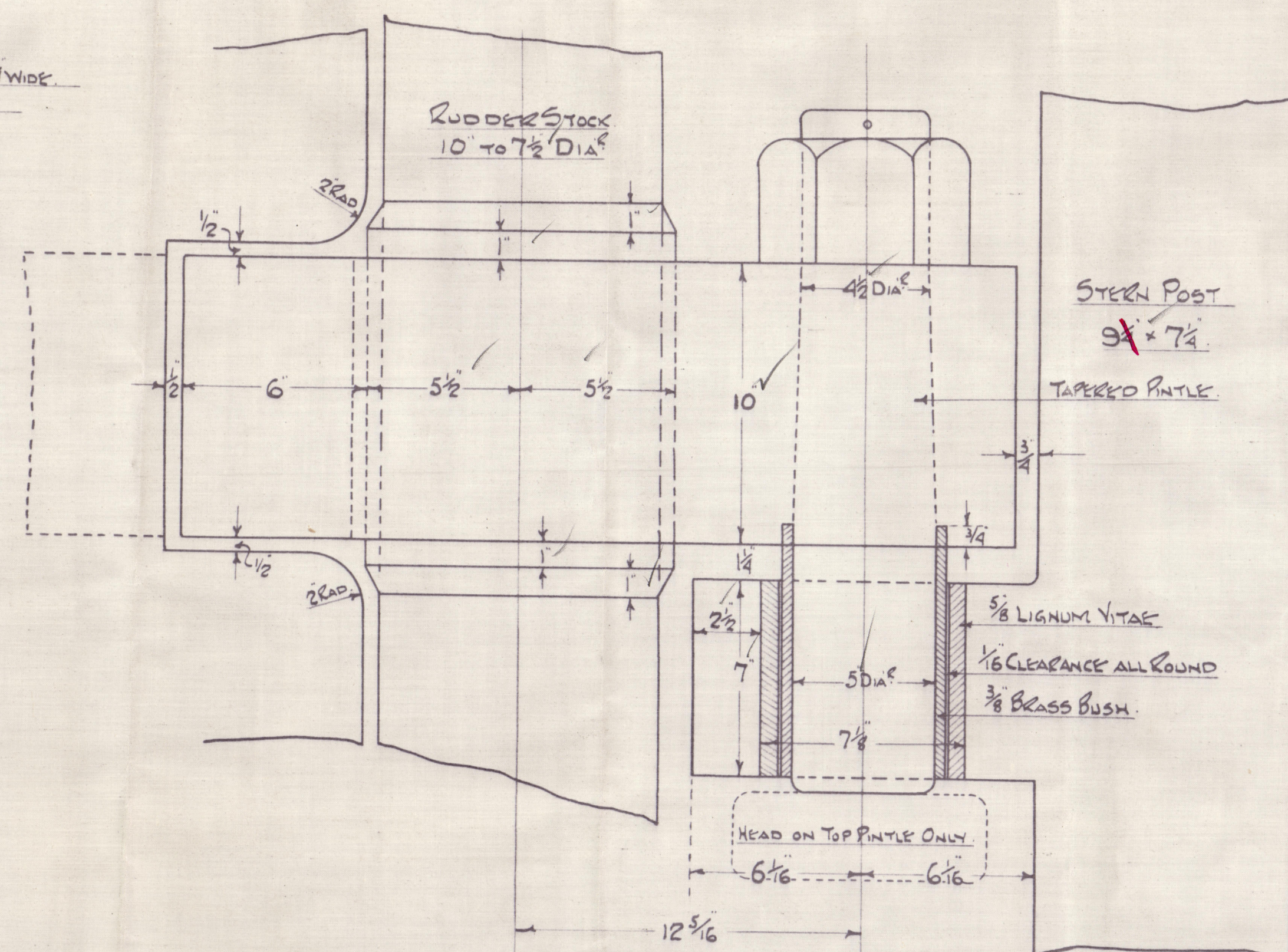
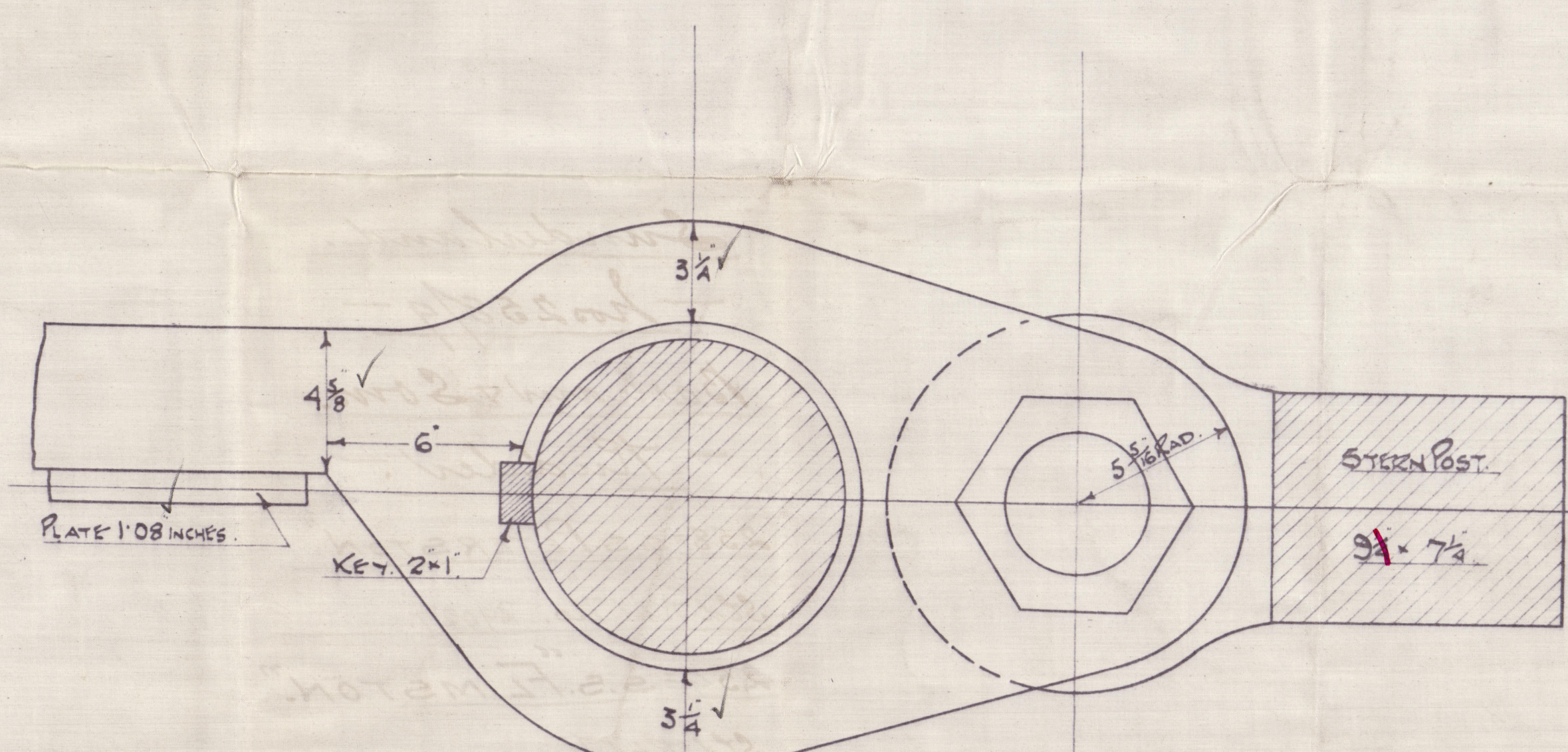


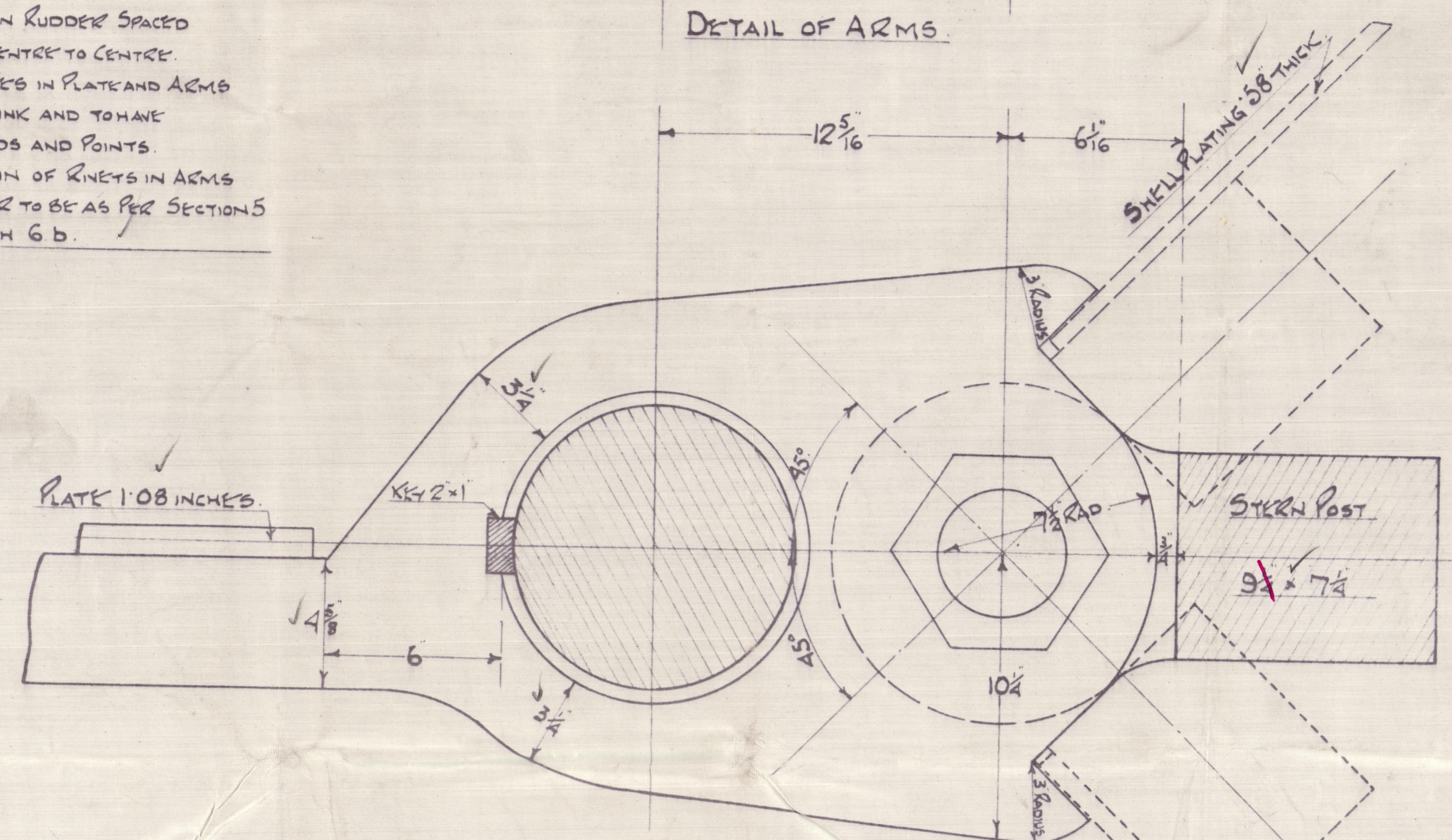
Hand-drawn technical drawing of a ship's stern section, showing the rudder, poop deck, turner deck, and various structural components like knees, plates, and arms. The drawing includes dimensions and labels for parts like "SMOOTH TURNED KEENWAY", "POOP DECK", "TURNER DECK", "STOPPER ARM", "STARBOARD ARM", and "BASE LINE". A note specifies "1/2 KNEES IN RUDDER SPACED 4 1/2 DIA. CENTER TO CENTER".



### DETAIL OF PINTLES



### DETAIL OF ARMS



DETAIL OF STOPPER ARM.

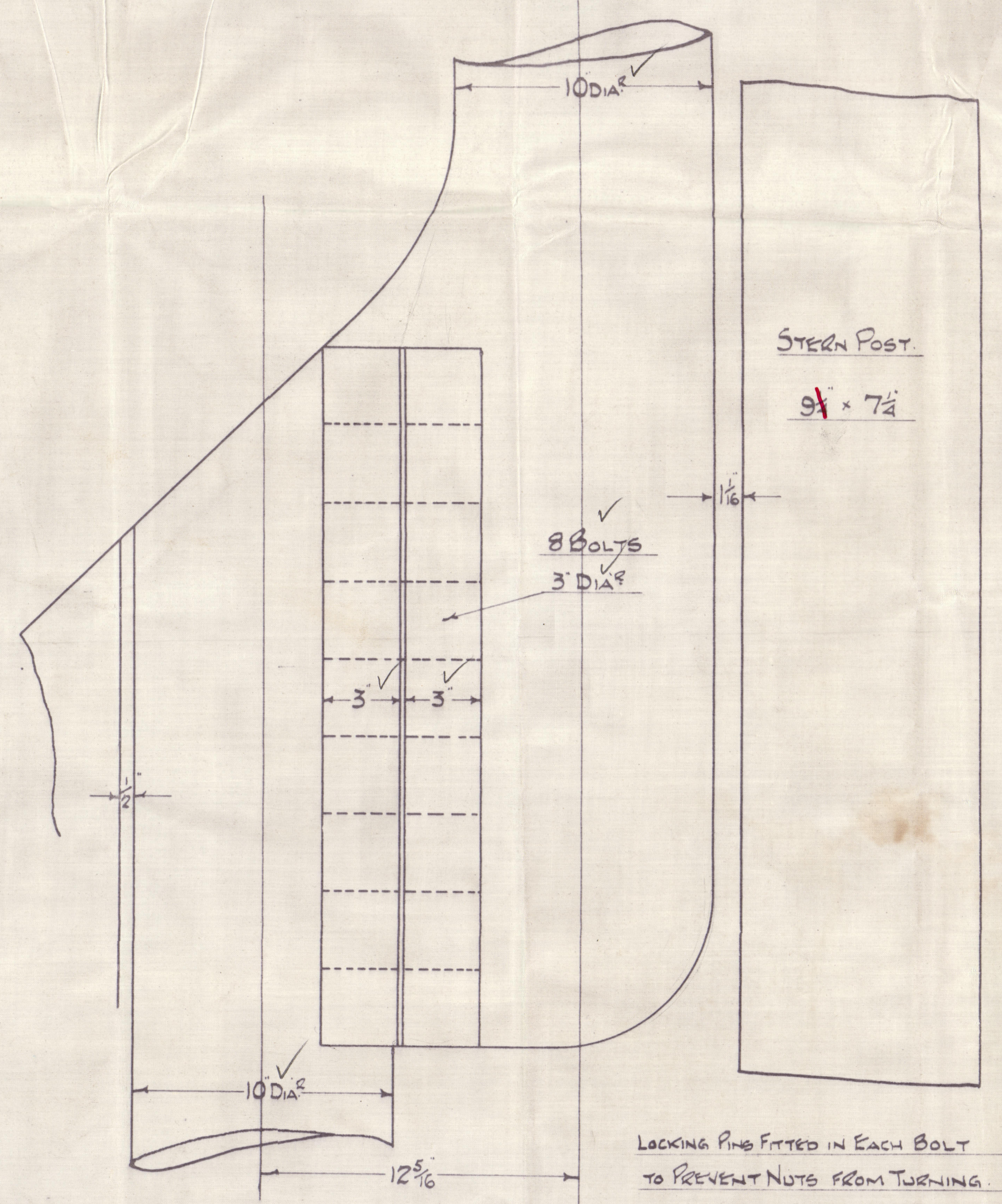
SCALE 2" = 1 FOOT      DETAILS 3" = 1 FOOT

RUDDER HEAD 10 DIA. PINTLES 5.5 DIA. SPEED UNDER 12 KNOTS

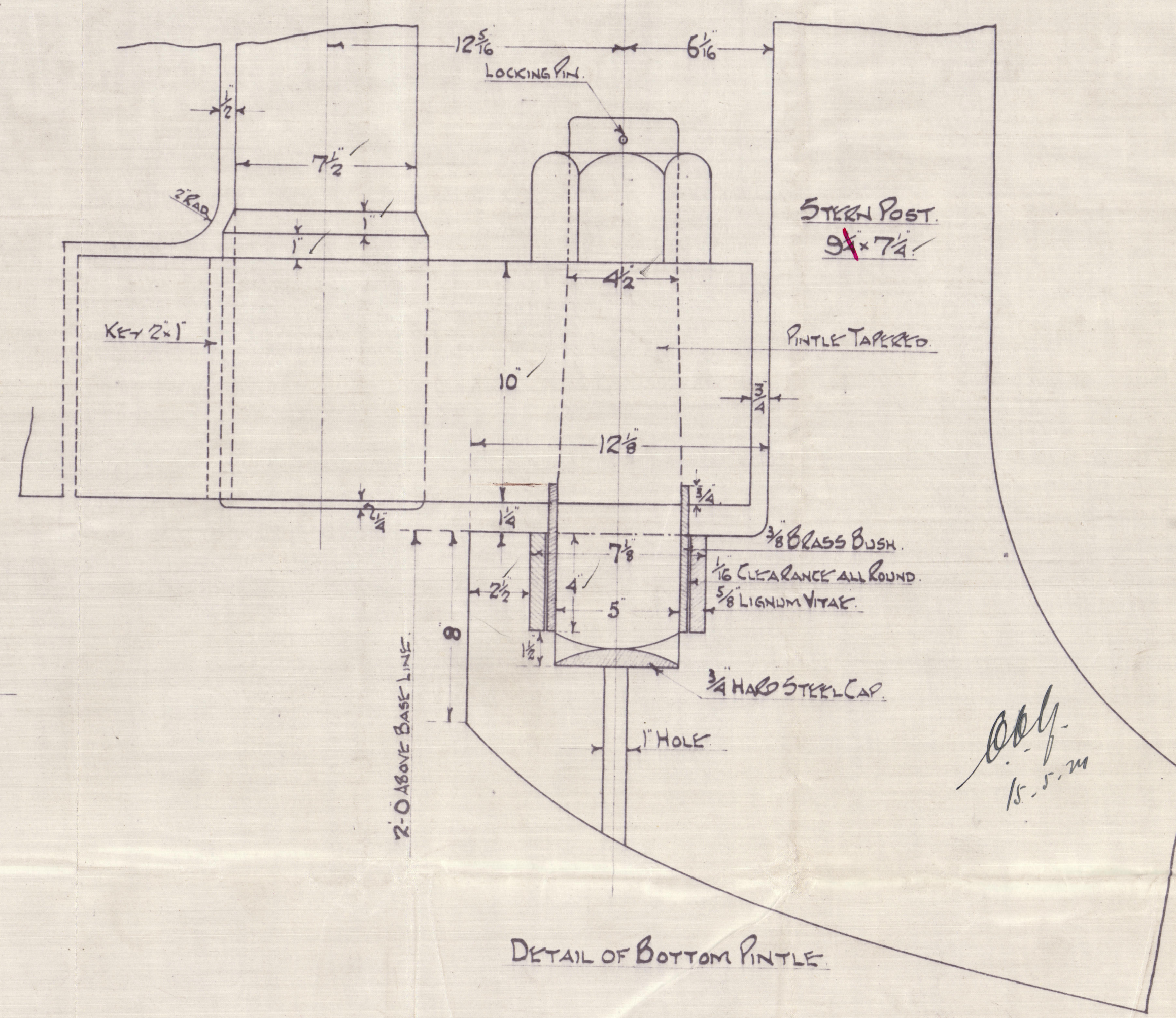
$A \times D = \frac{1725 \times 5.5}{125 \times 3.56} = 4880$

RUDDER STOCK 10 DIA. AT HEAD TO 7 DIA. AT HEEL WITH STRAIGHT TAPER BETWEEN EXCEPT IN WAY OF ARMS WHERE IT IS TURNED 1" LARGER THAN DIA. OF STOCK ABOVE ARM, AND IS PARALLEL FOR 1" ABOVE AND BELOW ARM.

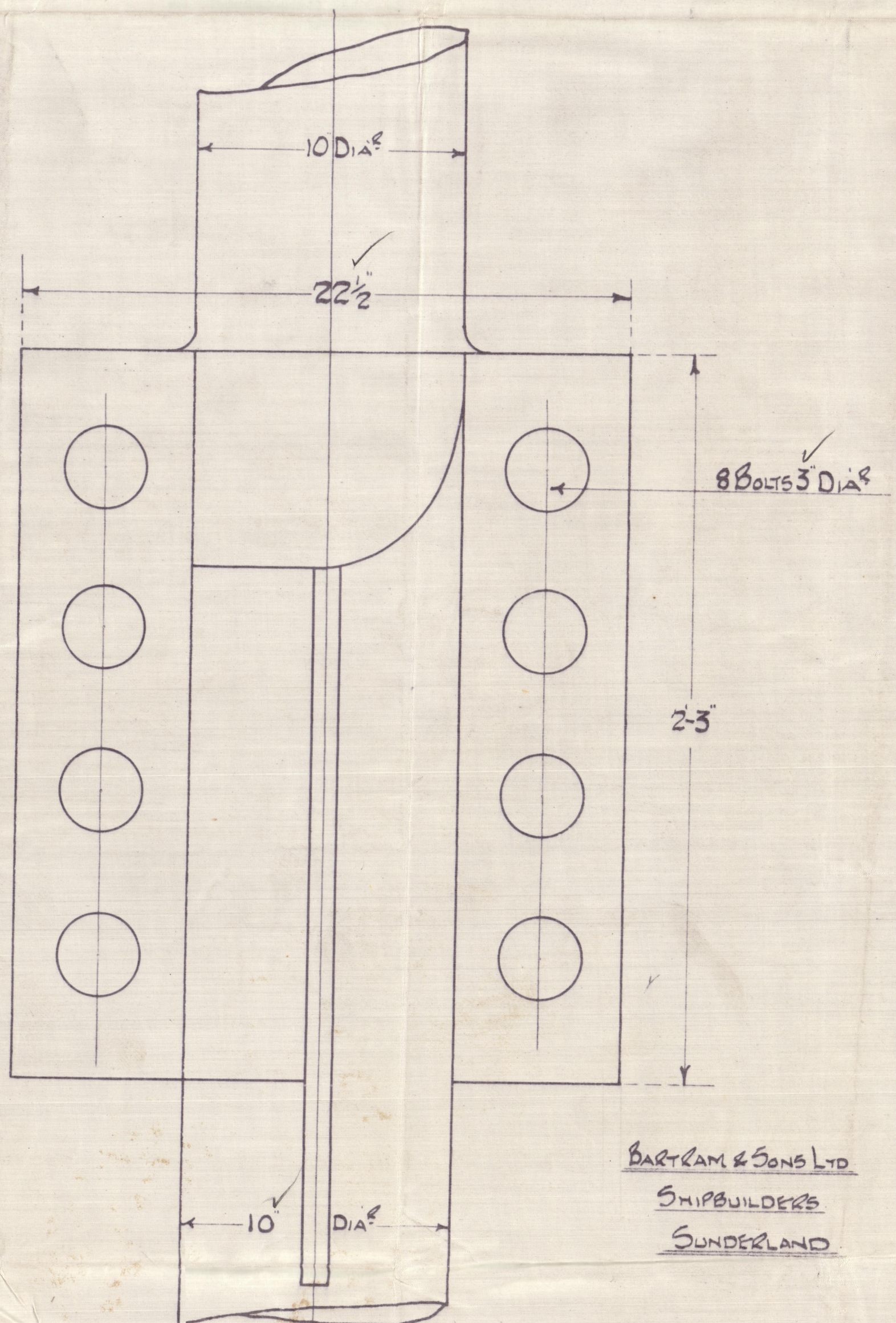
NUTS ON TOP OF PINTLES TO BE 6 3/4" OVER THE FLATS AND 4 1/2" DEEP



### DETAIL OF COUPLING.



### DETAIL OF BOTTOM PINTLE



BARTLAM & SONS LTD  
SHIPBUILDERS  
SUNDERLAND



Sunderland.

- Nos 258/9 -

Barham & Sons.

- Rudder. -

258 = S.S. "PETERSTON." \*

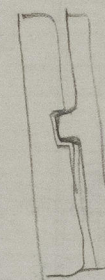
N.V. BURHAVEN

Std Rpt No. 29027.

259 = S.S. "FLIMSTON."

Std Rpt No. 29065

Burhaven



008773-008777-0155

008773-008777-0155



© 2021

Lloyd's Register  
Foundation