

RUDDER PARTICULARS

SHIP'S LENGTH BETWEEN P.P. (L)	128.00M
LOAD DRAUGHT (d)	7.95M
SEA SPEED	14.0 KNOTS
PROJECTED RUDDER AREA (A)	15.773M ²
DE. ABAFT PINTLE (A ₁)	11.631M
DE. BEFORE PINTLE (A ₂)	4.142M
BALANCING RATIO (A ₁ /A ₂)	2.806
MAX. THICKNESS-BREADTH RATIO	0.191
ASPECT RATIO (HEIGHT-BREADTH)	1.756
AREA RATIO (A ₁ /A ₂)	1/2.806
DIAMETER OF RUDDER HEAD	0.26M

REMARKS
1. WEIGHT OF RUDDER TO BE SUPPORTED AT UPPER PINTLE

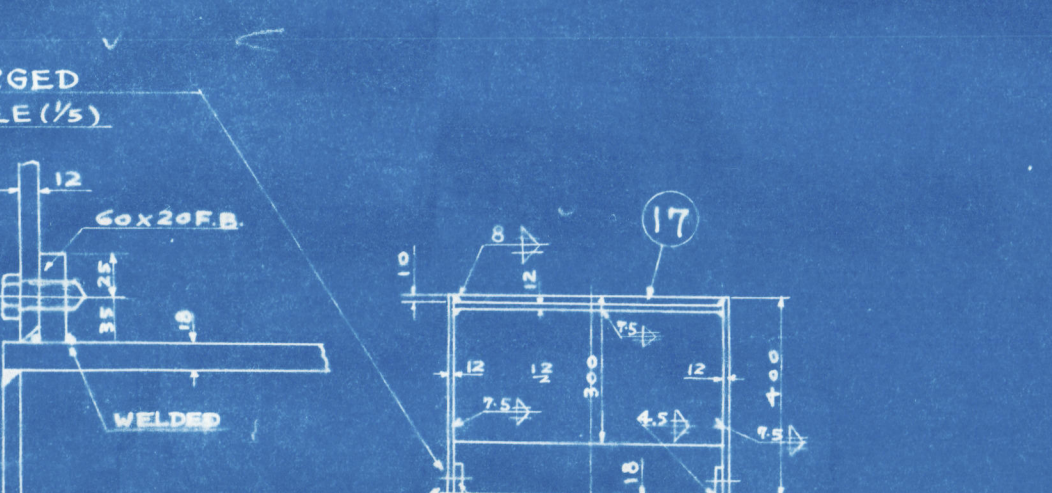
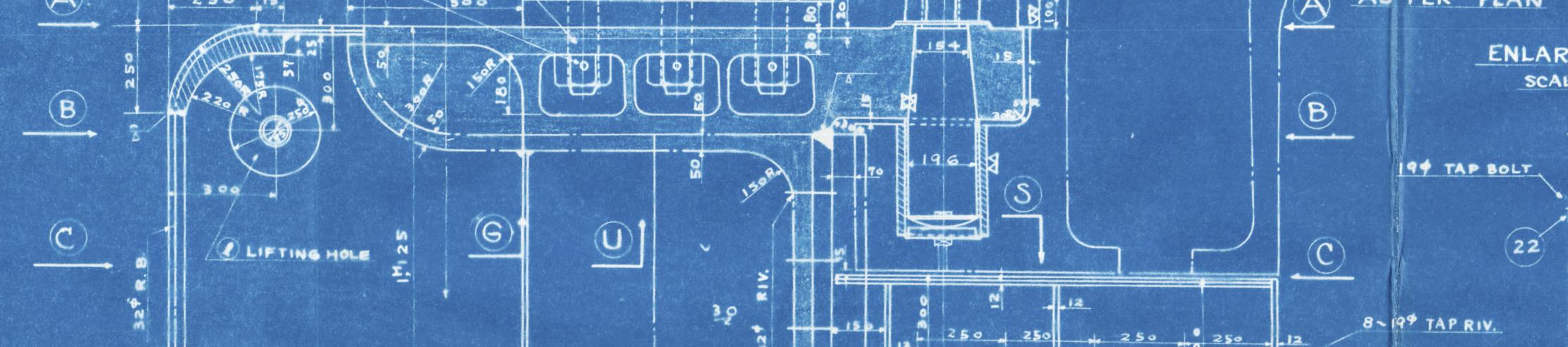
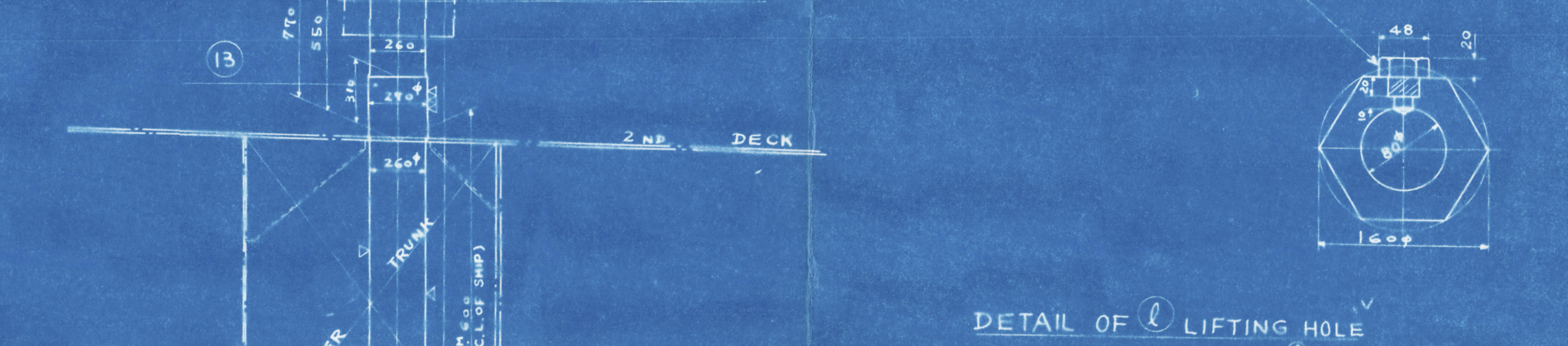
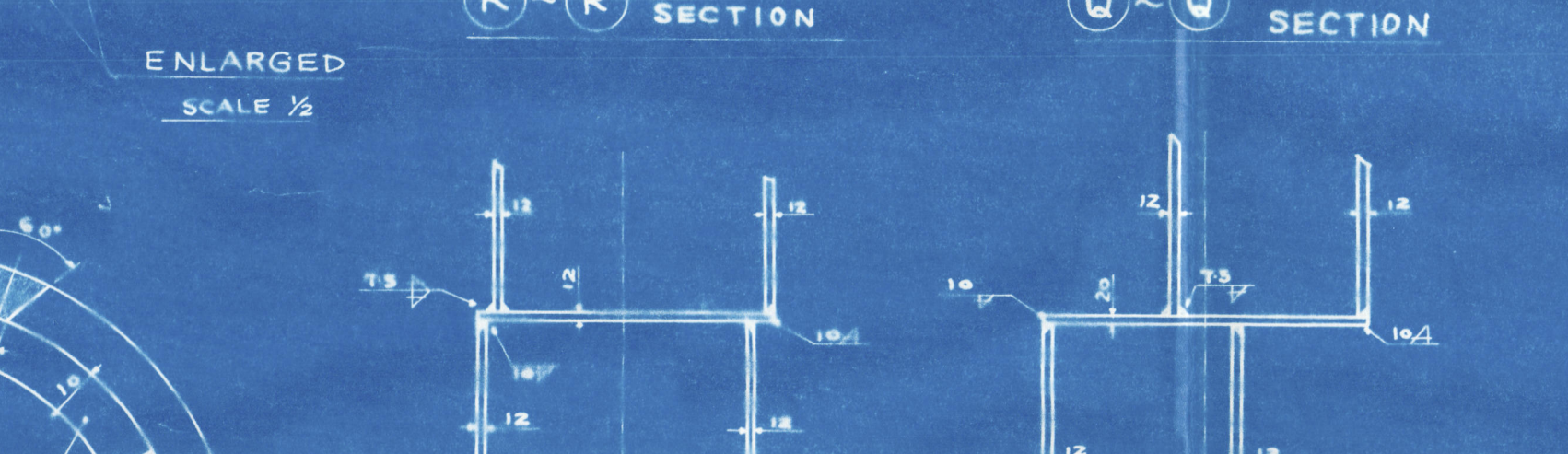
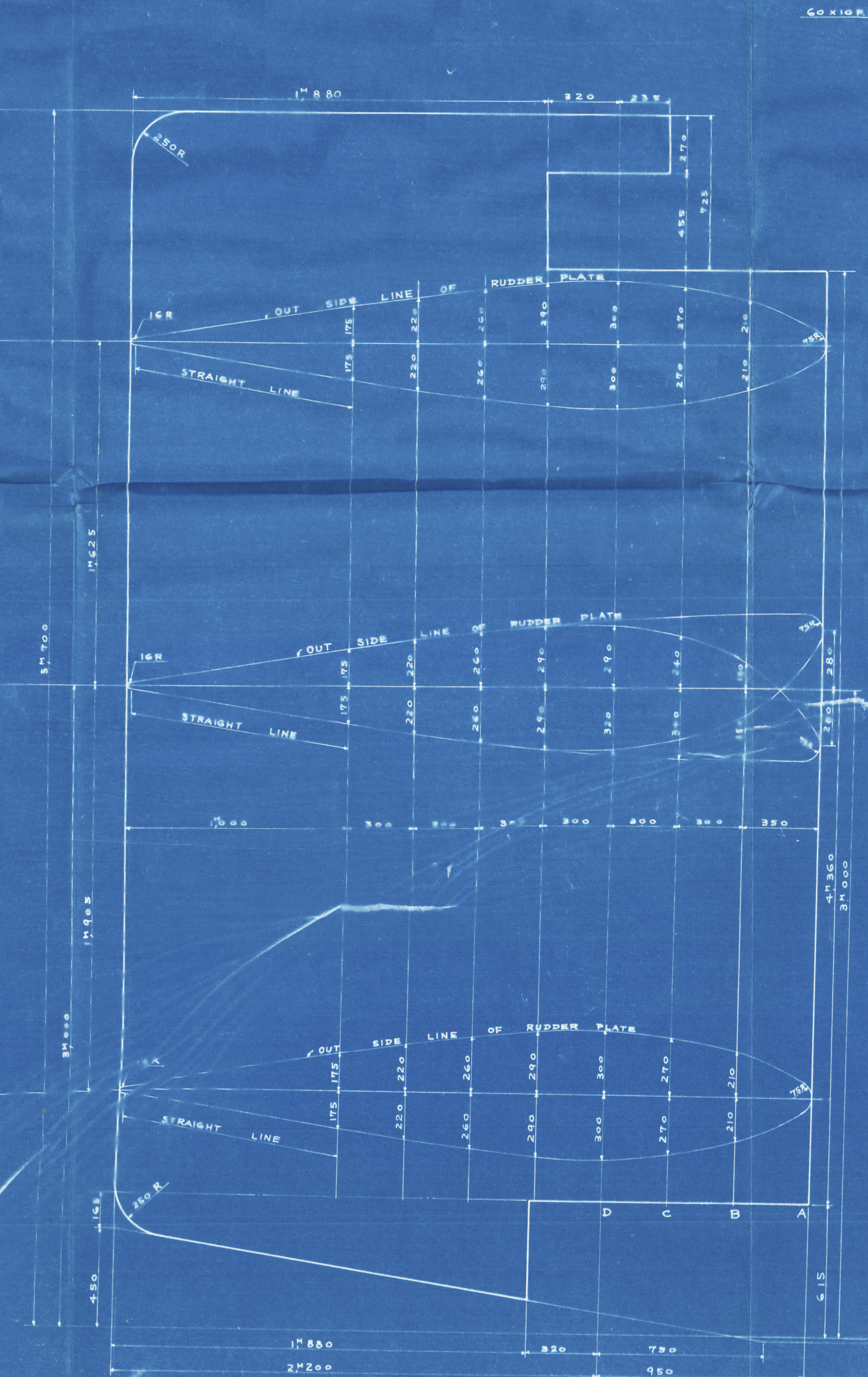
MATERIAL LIST

MARK	ITEM	MATERIAL	NO.	WEIGHT	REMARKS
(1)	RUDDER STOCK	FORGED STEEL	1	21.10	1/2 (1/2)
(2)	COUPLING PLATE	FORGED STEEL	1	2.10	1/2 (1/2)
(3)	WELDING RODS & SET SCREW	STEEL	2	0.10	1/2 (1/2)
(4)	EYE BOLT	STEEL	1	0.10	1/2 (1/2)
(5)	RUDDER BODY	STEEL	1	0.10	1/2 (1/2)
(6)	REMOVABLE CAP	CAST STEEL	1	0.10	1/2 (1/2)
(7)	TOP CASTING	CAST STEEL	1	0.10	1/2 (1/2)
(8)	BOTTOM CASTING	CAST STEEL	1	0.10	1/2 (1/2)
(9)	WASHER	BRASS	1	0.10	1/2 (1/2)
(10)	ZINC PROTECTOR	RING PLATE	4	0.10	1/2 (1/2)
(11)	TAP BOLTS	FORGED STEEL	8	0.10	1/2 (1/2)

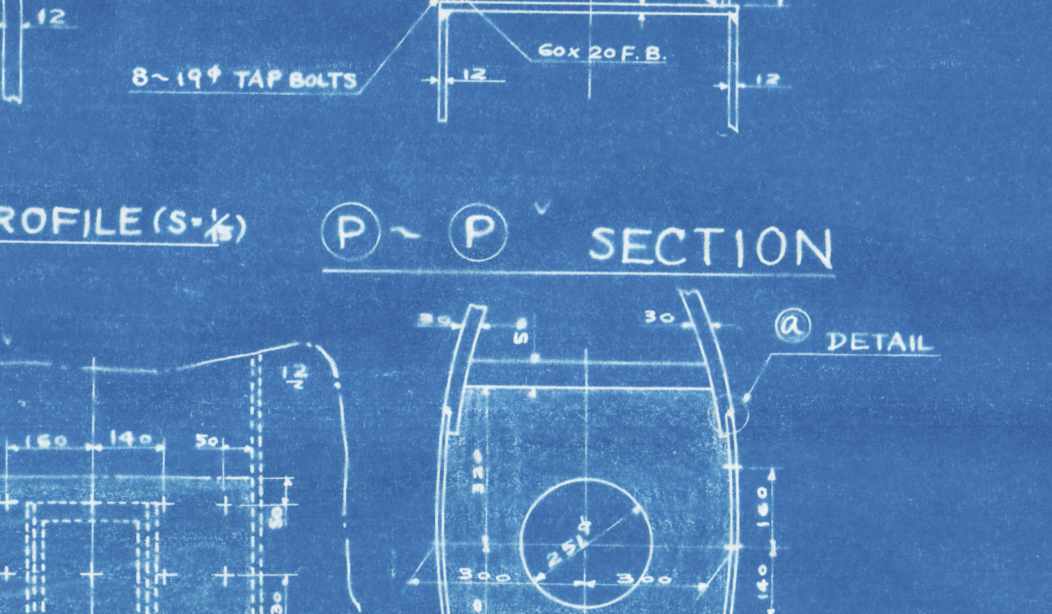
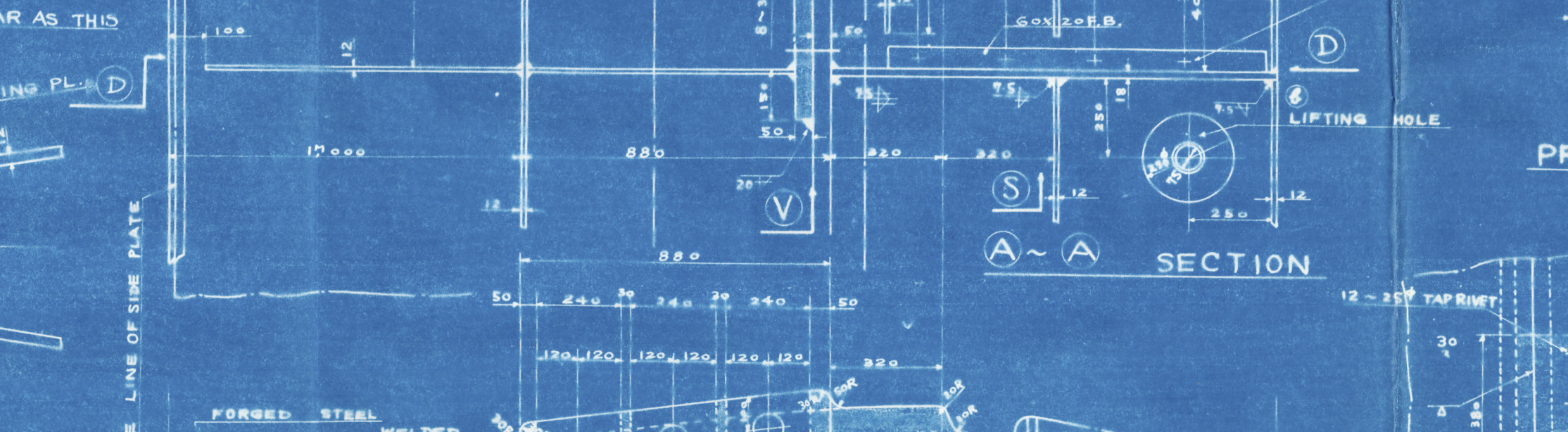
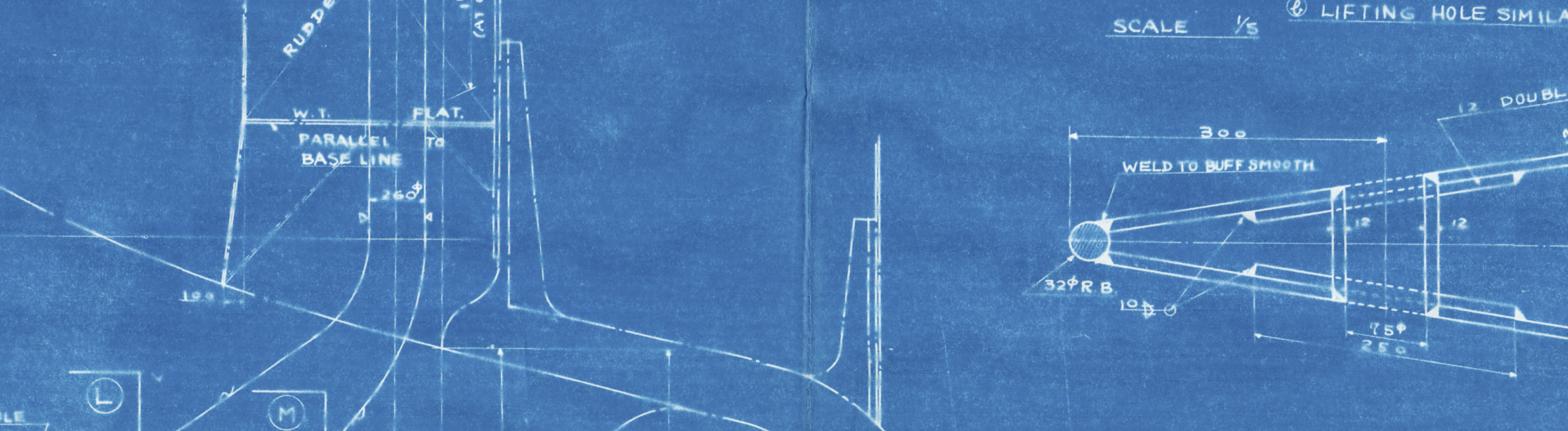
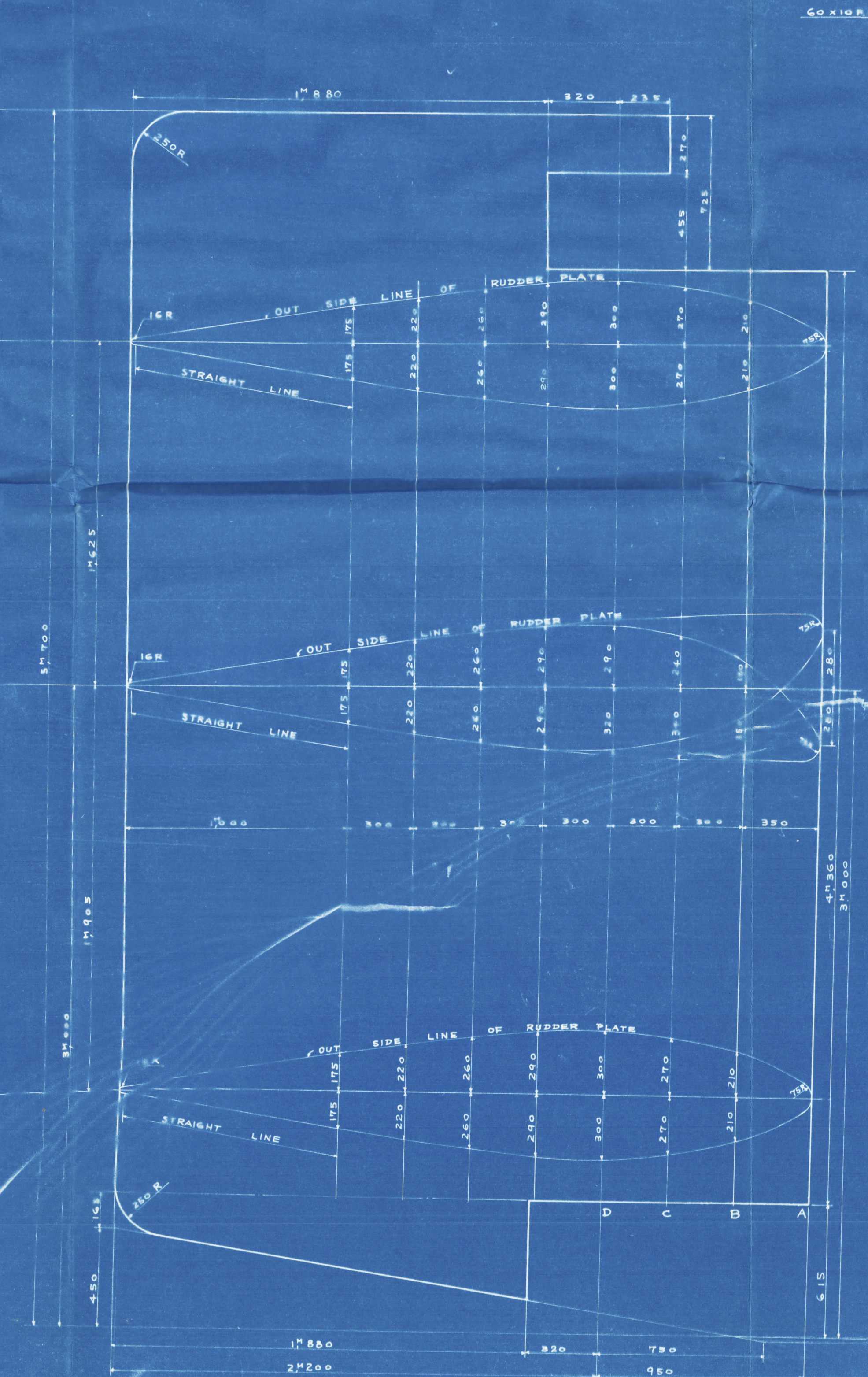
- NOTES
- 1) ALL SIZES ARE GIVEN IN MILLIMETERS UNLESS OTHERWISE NOTED.
 - 2) THIS PLAN SHOWS FINISHED DIMENSIONS.
 - 3) DIMENSIONS MARKED S TO BE DISTINCTLY DETERMINED BY FAIRING IN THE HOLO LOFT.
 - 4) FINISHING MARKS
 - 5) RAUGH FINISH
 - 6) AIR AND WATER-TIGHTNESS OF RUDDER TO BE TESTED
 - 7) WATER PRESSURE FOR TEST OF WATER-TIGHTNESS IS 0.8 ATMOSPHERIC PRESSURE
 - 8) PAINTING OF RUDDER (INSIDE) IS BITUMINOUS SOLUTION & ENAMEL
 - 9) "STERN FRAME" PLAN TO BE REFERRED TO.

NOTE
HORN & VERTICAL FRAMES TO BE CONNECTED TO RUDDER PLATE BY FIN WELDING AT PORT SIDE

LINE OF RUDDER
INCLUDING RUDDER PLATE THICKNESS
SCALE 1/2

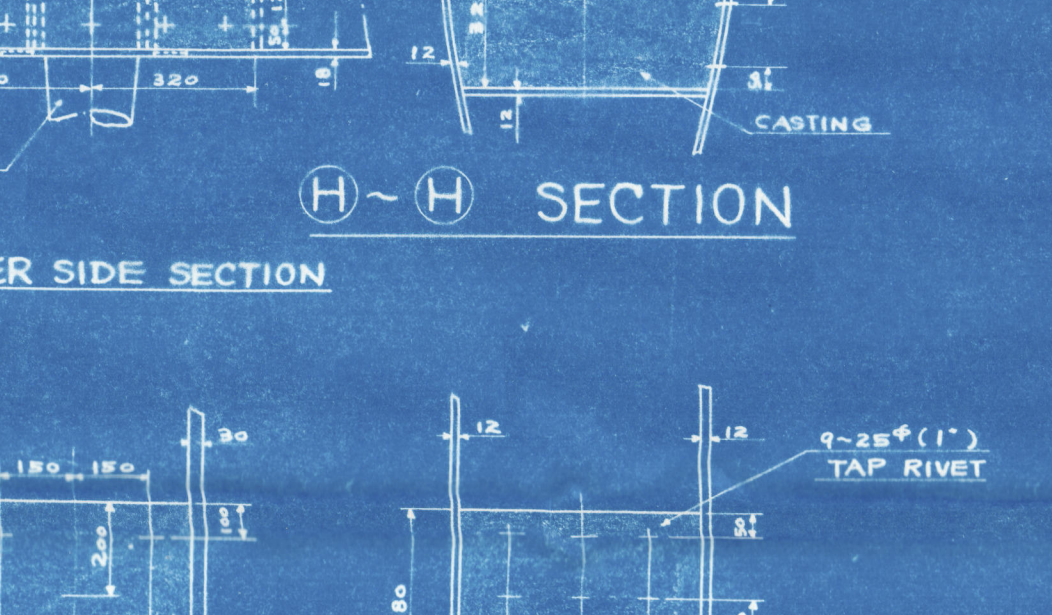
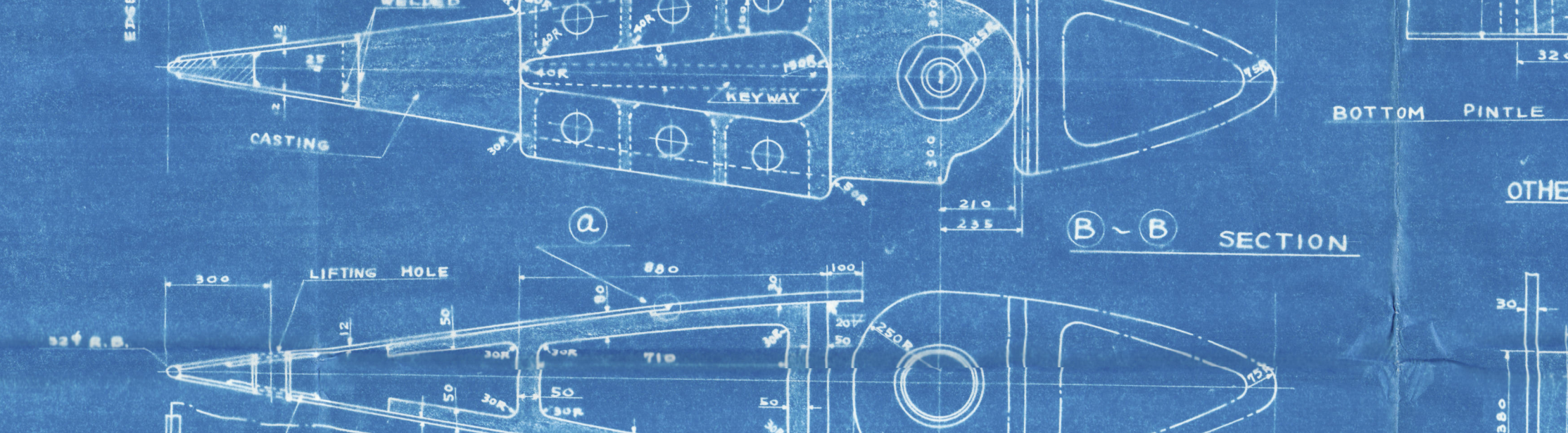
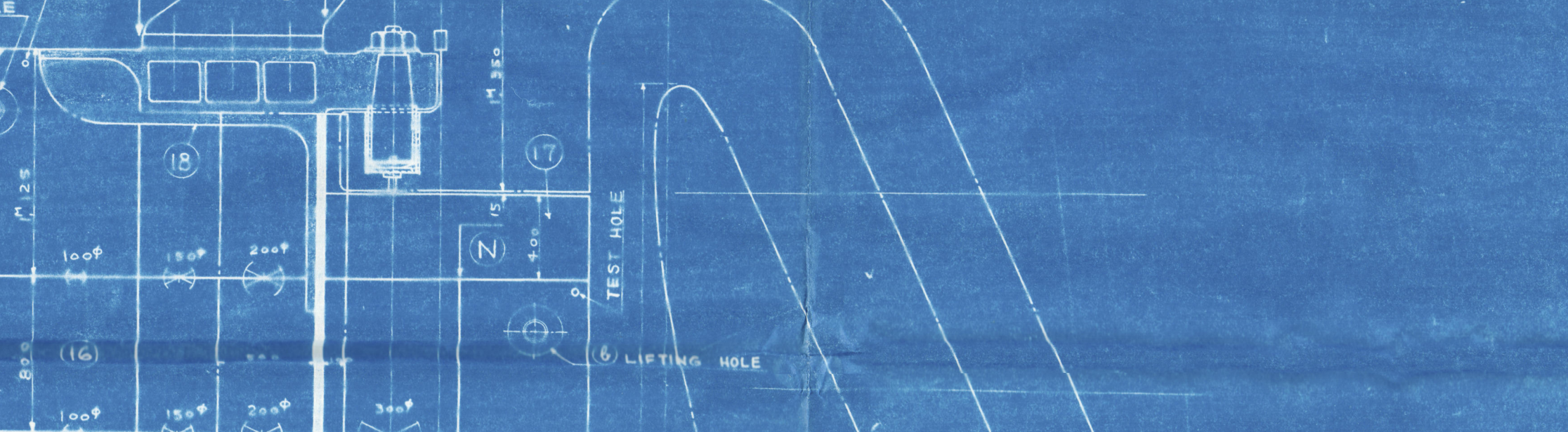
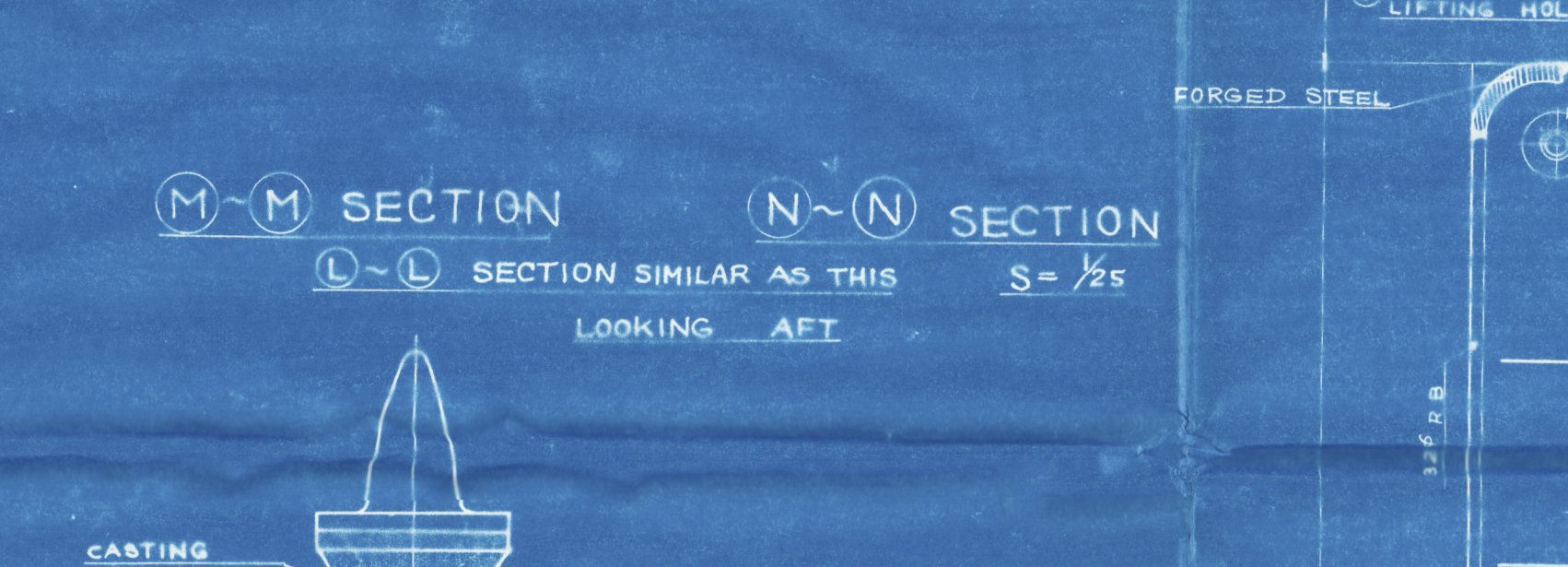
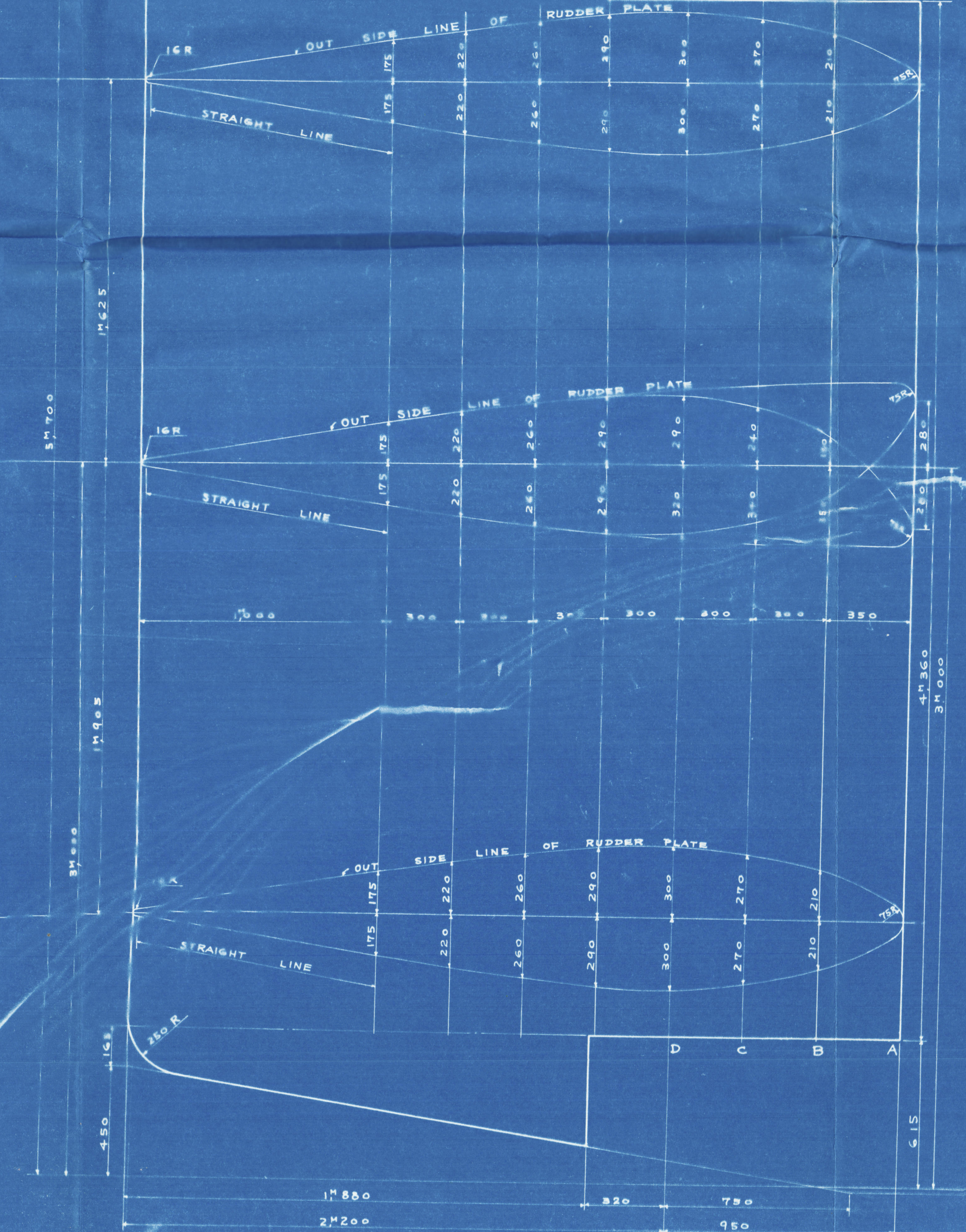


- NOTES
- 1) ALL SIZES ARE GIVEN IN MILLIMETERS UNLESS OTHERWISE NOTED.
 - 2) THIS PLAN SHOWS FINISHED DIMENSIONS.
 - 3) DIMENSIONS MARKED S TO BE DISTINCTLY DETERMINED BY FAIRING IN THE HOLO LOFT.
 - 4) FINISHING MARKS
 - 5) RAUGH FINISH
 - 6) AIR AND WATER-TIGHTNESS OF RUDDER TO BE TESTED
 - 7) WATER PRESSURE FOR TEST OF WATER-TIGHTNESS IS 0.8 ATMOSPHERIC PRESSURE
 - 8) PAINTING OF RUDDER (INSIDE) IS BITUMINOUS SOLUTION & ENAMEL
 - 9) "STERN FRAME" PLAN TO BE REFERRED TO.



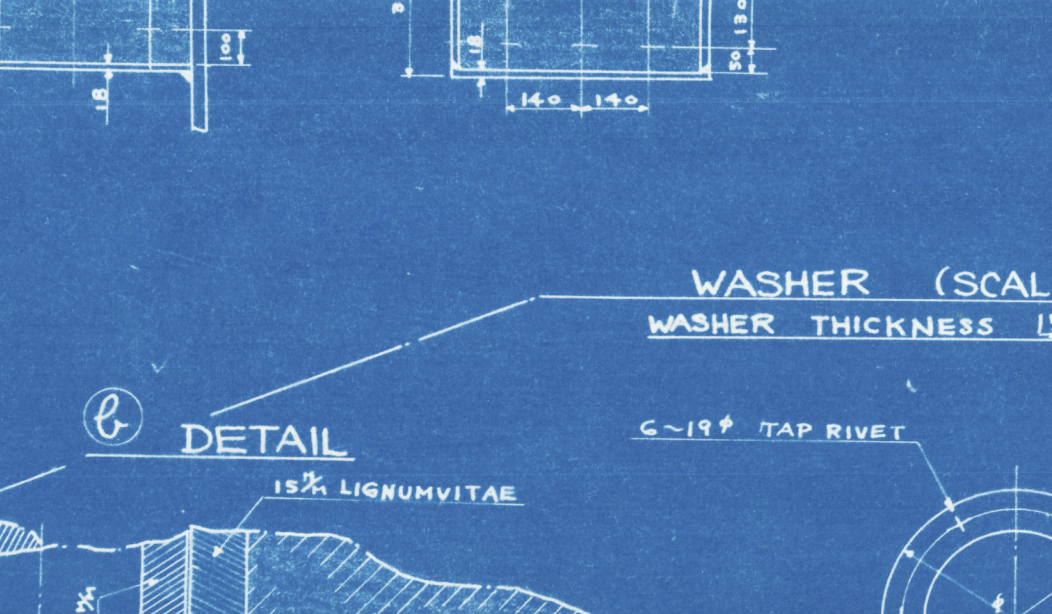
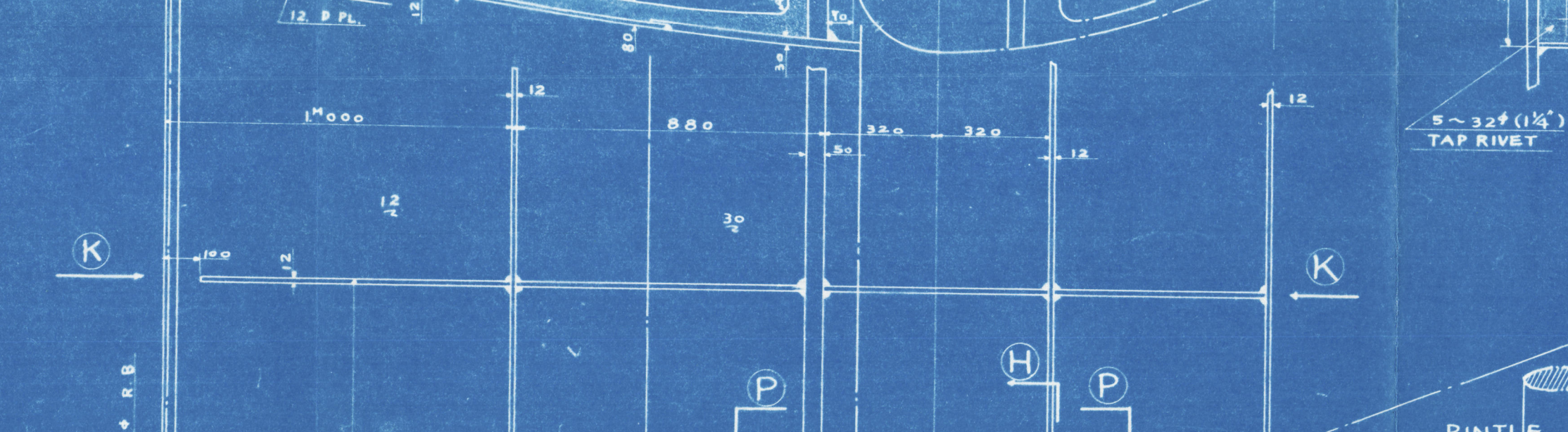
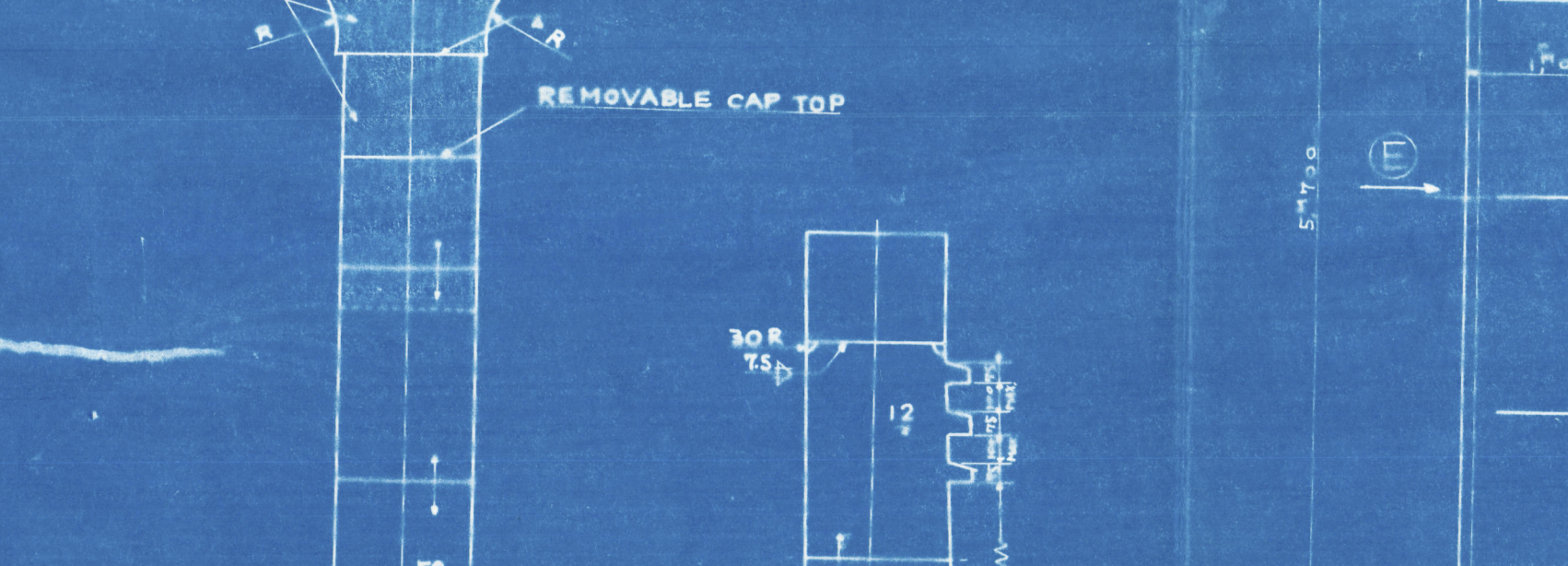
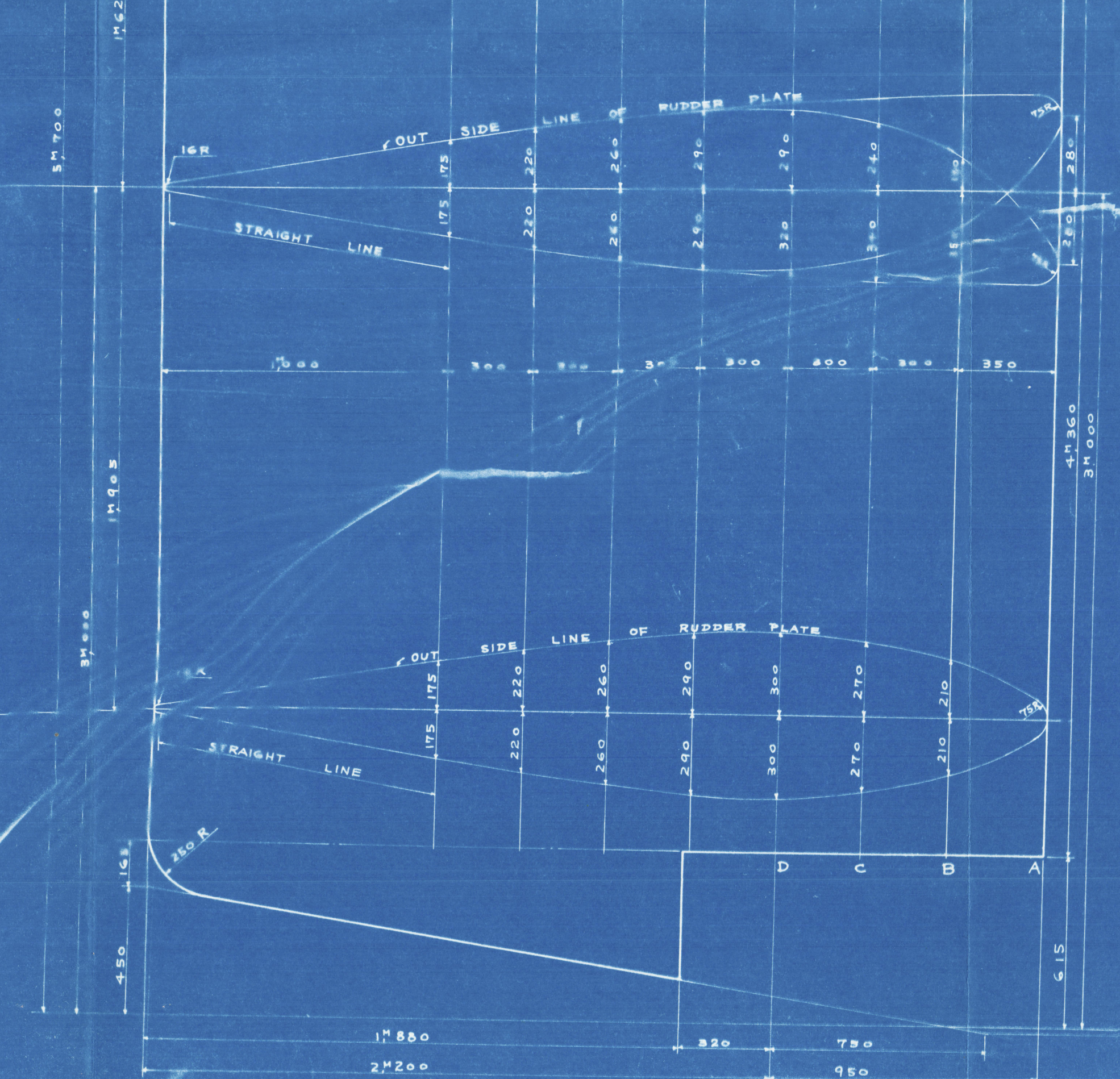
OTHER SIDE SECTION

1. 1/2 (1/2)	2. 1/2 (1/2)
3. 1/2 (1/2)	4. 1/2 (1/2)
5. 1/2 (1/2)	6. 1/2 (1/2)
7. 1/2 (1/2)	8. 1/2 (1/2)
9. 1/2 (1/2)	10. 1/2 (1/2)
11. 1/2 (1/2)	12. 1/2 (1/2)
13. 1/2 (1/2)	14. 1/2 (1/2)
15. 1/2 (1/2)	16. 1/2 (1/2)
17. 1/2 (1/2)	18. 1/2 (1/2)
19. 1/2 (1/2)	20. 1/2 (1/2)
21. 1/2 (1/2)	22. 1/2 (1/2)
23. 1/2 (1/2)	24. 1/2 (1/2)
25. 1/2 (1/2)	26. 1/2 (1/2)
27. 1/2 (1/2)	28. 1/2 (1/2)
29. 1/2 (1/2)	30. 1/2 (1/2)
31. 1/2 (1/2)	32. 1/2 (1/2)
33. 1/2 (1/2)	34. 1/2 (1/2)
35. 1/2 (1/2)	36. 1/2 (1/2)
37. 1/2 (1/2)	38. 1/2 (1/2)
39. 1/2 (1/2)	40. 1/2 (1/2)
41. 1/2 (1/2)	42. 1/2 (1/2)
43. 1/2 (1/2)	44. 1/2 (1/2)
45. 1/2 (1/2)	46. 1/2 (1/2)
47. 1/2 (1/2)	48. 1/2 (1/2)
49. 1/2 (1/2)	50. 1/2 (1/2)
51. 1/2 (1/2)	52. 1/2 (1/2)
53. 1/2 (1/2)	54. 1/2 (1/2)
55. 1/2 (1/2)	56. 1/2 (1/2)
57. 1/2 (1/2)	58. 1/2 (1/2)
59. 1/2 (1/2)	60. 1/2 (1/2)
61. 1/2 (1/2)	62. 1/2 (1/2)
63. 1/2 (1/2)	64. 1/2 (1/2)
65. 1/2 (1/2)	66. 1/2 (1/2)
67. 1/2 (1/2)	68. 1/2 (1/2)
69. 1/2 (1/2)	70. 1/2 (1/2)
71. 1/2 (1/2)	72. 1/2 (1/2)
73. 1/2 (1/2)	74. 1/2 (1/2)
75. 1/2 (1/2)	76. 1/2 (1/2)
77. 1/2 (1/2)	78. 1/2 (1/2)
79. 1/2 (1/2)	80. 1/2 (1/2)
81. 1/2 (1/2)	82. 1/2 (1/2)
83. 1/2 (1/2)	84. 1/2 (1/2)
85. 1/2 (1/2)	86. 1/2 (1/2)
87. 1/2 (1/2)	88. 1/2 (1/2)
89. 1/2 (1/2)	90. 1/2 (1/2)
91. 1/2 (1/2)	92. 1/2 (1/2)
93. 1/2 (1/2)	94. 1/2 (1/2)
95. 1/2 (1/2)	96. 1/2 (1/2)
97. 1/2 (1/2)	98. 1/2 (1/2)
99. 1/2 (1/2)	100. 1/2 (1/2)



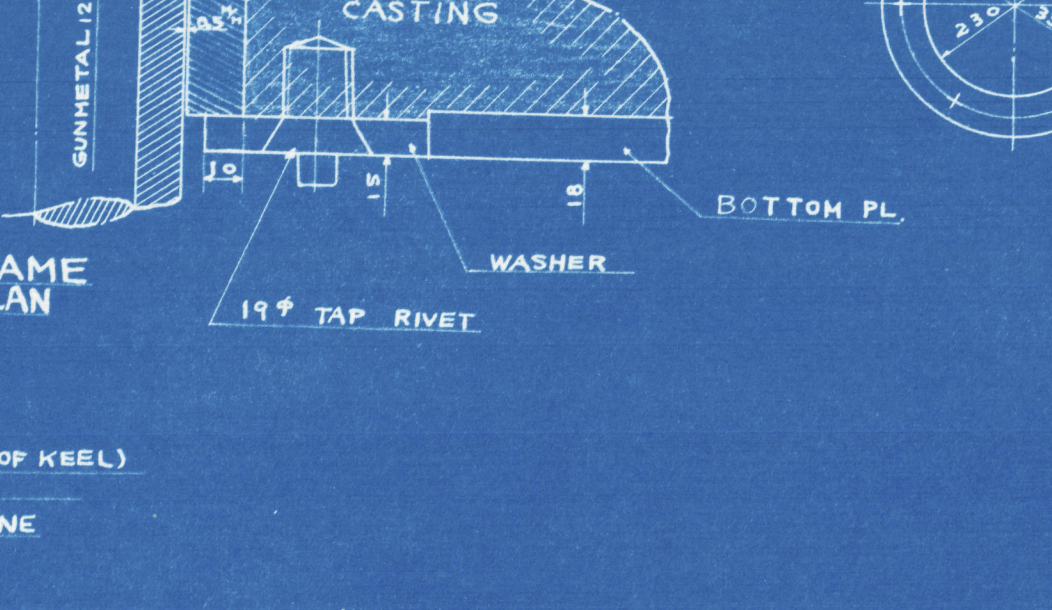
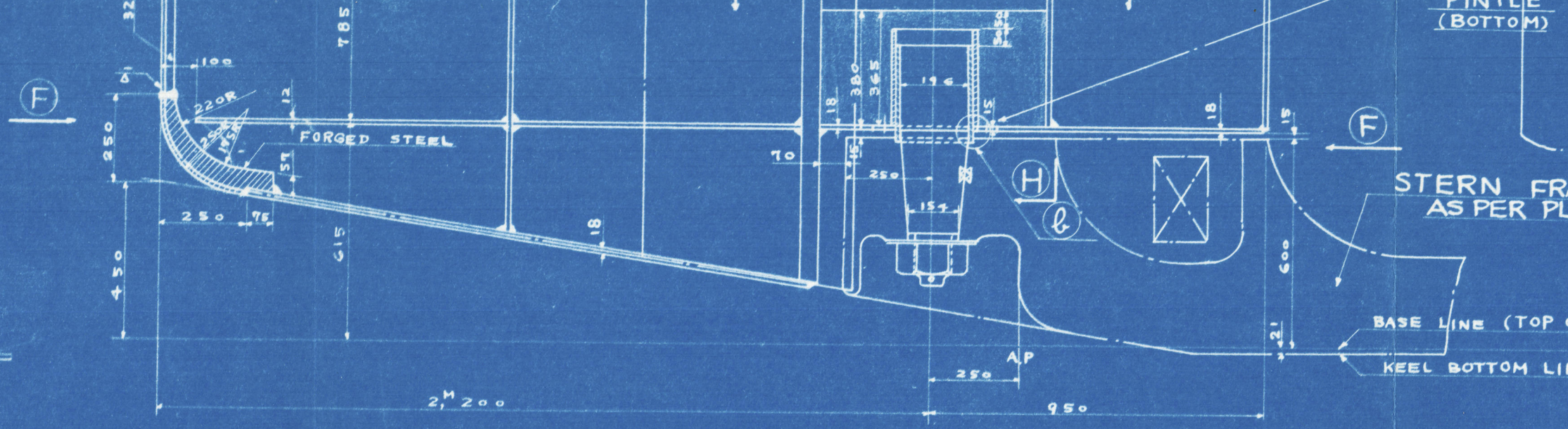
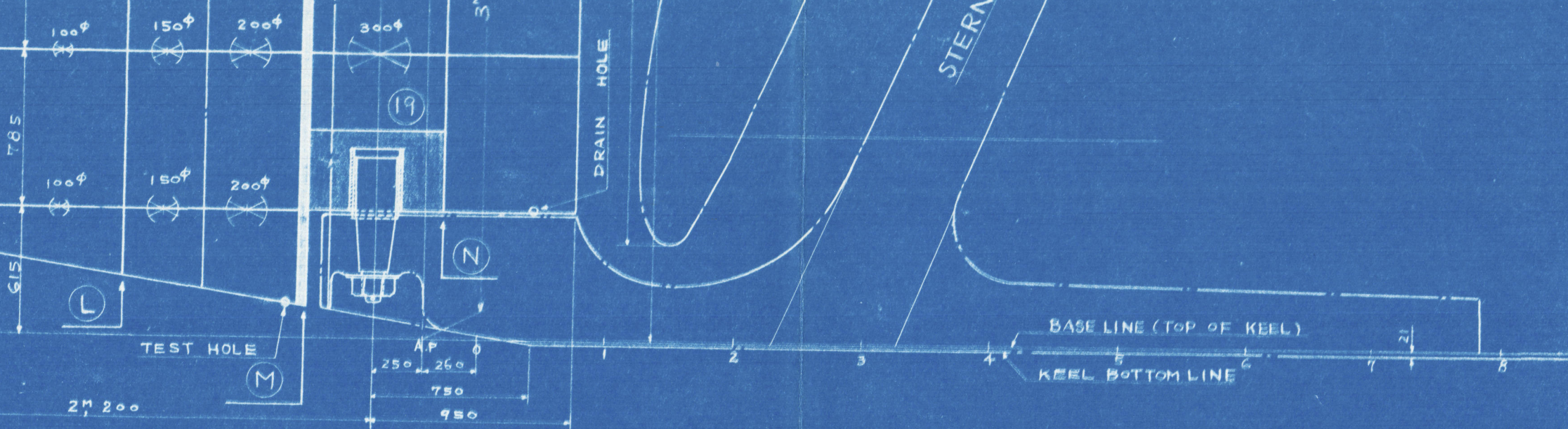
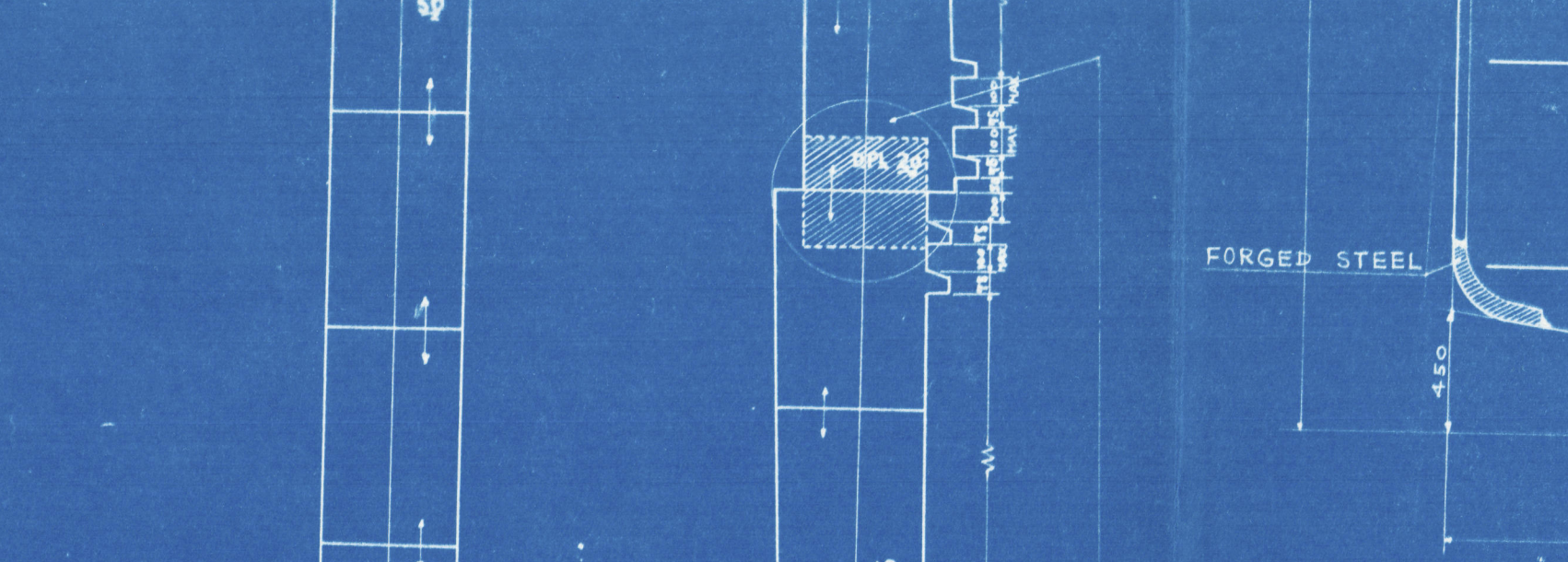
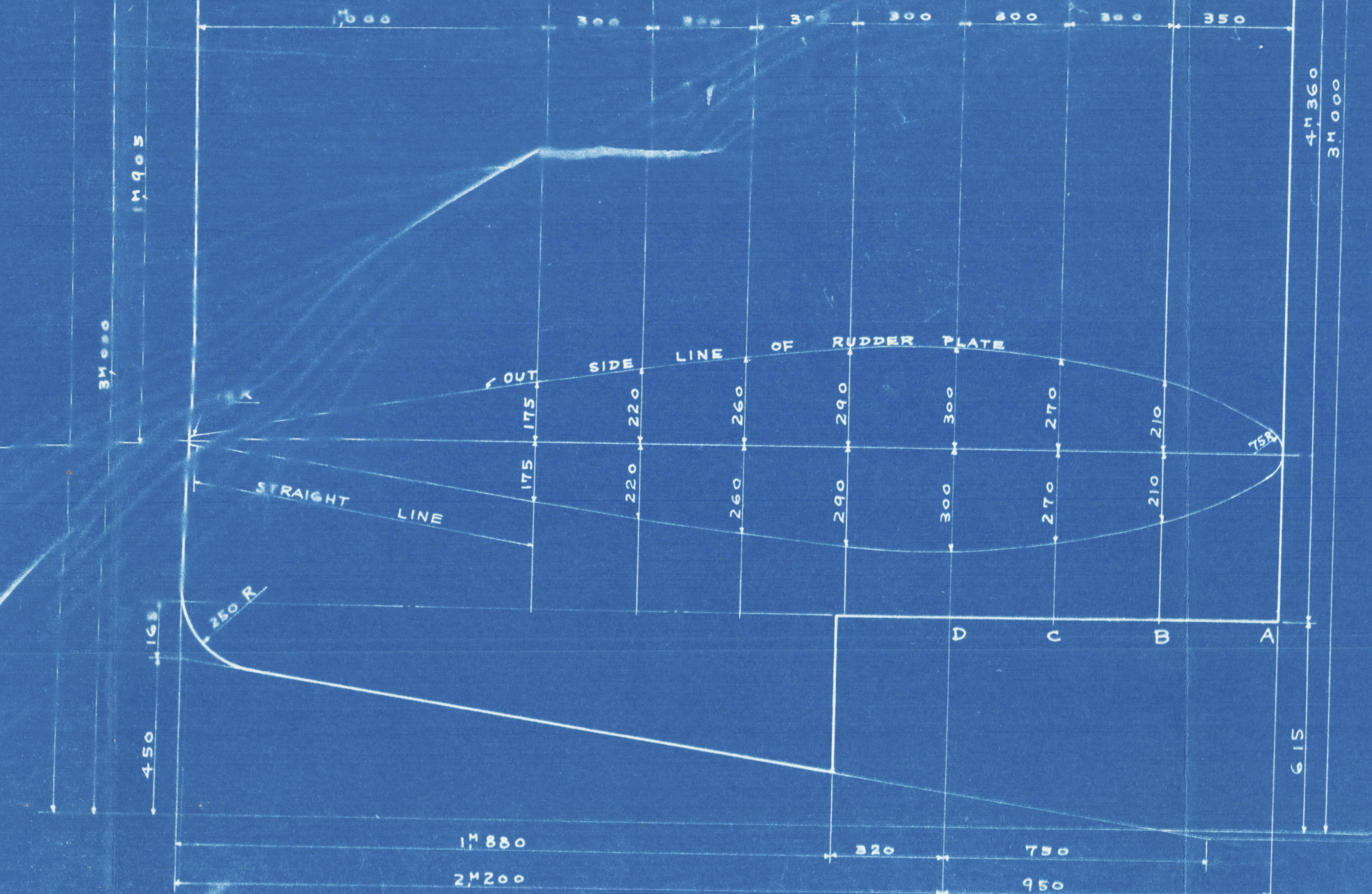
OTHER SIDE SECTION

1. 1/2 (1/2)	2. 1/2 (1/2)
3. 1/2 (1/2)	4. 1/2 (1/2)
5. 1/2 (1/2)	6. 1/2 (1/2)
7. 1/2 (1/2)	8. 1/2 (1/2)
9. 1/2 (1/2)	10. 1/2 (1/2)
11. 1/2 (1/2)	12. 1/2 (1/2)
13. 1/2 (1/2)	14. 1/2 (1/2)
15. 1/2 (1/2)	16. 1/2 (1/2)
17. 1/2 (1/2)	18. 1/2 (1/2)
19. 1/2 (1/2)	20. 1/2 (1/2)
21. 1/2 (1/2)	22. 1/2 (1/2)
23. 1/2 (1/2)	24. 1/2 (1/2)
25. 1/2 (1/2)	26. 1/2 (1/2)
27. 1/2 (1/2)	28. 1/2 (1/2)
29. 1/2 (1/2)	30. 1/2 (1/2)
31. 1/2 (1/2)	32. 1/2 (1/2)
33. 1/2 (1/2)	34. 1/2 (1/2)
35. 1/2 (1/2)	36. 1/2 (1/2)
37. 1/2 (1/2)	38. 1/2 (1/2)
39. 1/2 (1/2)	40. 1/2 (1/2)
41. 1/2 (1/2)	42. 1/2 (1/2)
43. 1/2 (1/2)	44. 1/2 (1/2)
45. 1/2 (1/2)	46. 1/2 (1/2)
47. 1/2 (1/2)	48. 1/2 (1/2)
49. 1/2 (1/2)	50. 1/2 (1/2)
51. 1/2 (1/2)	52. 1/2 (1/2)
53. 1/2 (1/2)	54. 1/2 (1/2)
55. 1/2 (1/2)	56. 1/2 (1/2)
57. 1/2 (1/2)	58. 1/2 (1/2)
59. 1/2 (1/2)	60. 1/2 (1/2)
61. 1/2 (1/2)	62. 1/2 (1/2)
63. 1/2 (1/2)	64. 1/2 (1/2)
65. 1/2 (1/2)	66. 1/2 (1/2)
67. 1/2 (1/2)	68. 1/2 (1/2)
69. 1/2 (1/2)	70. 1/2 (1/2)
71. 1/2 (1/2)	72. 1/2 (1/2)
73. 1/2 (1/2)	74. 1/2 (1/2)
75. 1/2 (1/2)	76. 1/2 (1/2)
77. 1/2 (1/2)	78. 1/2 (1/2)
79. 1/2 (1/2)	80. 1/2 (1/2)
81. 1/2 (1/2)	82. 1/2 (1/2)
83. 1/2 (1/2)	84. 1/2 (1/2)
85. 1/2 (1/2)	86. 1/2 (1/2)
87. 1/2 (1/2)	88. 1/2 (1/2)
89. 1/2 (1/2)	90. 1/2 (1/2)
91. 1/2 (1/2)	92. 1/2 (1/2)
93. 1/2 (1/2)	94. 1/2 (1/2)
95. 1/2 (1/2)	96. 1/2 (1/2)
97. 1/2 (1/2)	98. 1/2 (1/2)
99. 1/2 (1/2)	100. 1/2 (1/2)



OTHER SIDE SECTION

1. 1/2 (1/2)	2. 1/2 (1/2)
3. 1/2 (1/2)	4. 1/2 (1/2)
5. 1/2 (1/2)	6. 1/2 (1/2)
7. 1/2 (1/2)	8. 1/2 (1/2)
9. 1/2 (1/2)	10. 1/2 (1/2)
11. 1/2 (1/2)	12. 1/2 (1/2)
13. 1/2 (1/2)	14. 1/2 (1/2)
15. 1/2 (1/2)	16. 1/2 (1/2)
17. 1/2 (1/2)	18. 1/2 (1/2)
19. 1/2 (1/2)	20. 1/2 (1/2)
21. 1/2 (1/2)	22. 1/2 (1/2)
23. 1/2 (1/2)	24. 1/2 (1/2)
25. 1/2 (1/2)	26. 1/2 (1/2)
27. 1/2 (1/2)	28. 1/2 (1/2)
29. 1/2 (1/2)	30. 1/2 (1/2)
31. 1/2 (1/2)	32. 1/2 (1/2)
33. 1/2 (1/2)	34. 1/2 (1/2)
35. 1/2 (1/2)	36. 1/2 (1/2)
37. 1/2 (1/2)	38. 1/2 (1/2)
39. 1/2 (1/2)	40. 1/2 (1/2)
41. 1/2 (1/2)	42. 1/2 (1/2)
43. 1/2 (1/2)	44. 1/2 (1/2)
45. 1/2 (1/2)	46. 1/2 (1/2)
47. 1/2 (1/2)	48. 1/2 (1/2)
49. 1/2 (1/2)	50. 1/2 (1/2)
51. 1/2 (1/2)	52. 1/2 (1/2)
53. 1/2 (1/2)	54. 1/2 (1/2)
55. 1/2 (1/2)	56. 1/2 (1/2)
57. 1/2 (1/2)	58. 1/2 (1/2)
59. 1/2 (1/2)	60. 1/2 (1/2)
61. 1/2 (1/2)	62. 1/2 (1/2)
63. 1/2 (1/2)	64. 1/2 (1/2)
65. 1/2 (1/2)	66. 1/2 (1/2)
67. 1/2 (1/2)	68. 1/2 (1/2)
69. 1/2 (1/2)	70. 1/2 (1/2)
71. 1/2 (1/2)	72. 1/2 (1/2)
73. 1/2 (1/2)	74. 1/2 (1/2)
75. 1/2 (1/2)	76. 1/2 (1/2)
77. 1/2 (1/2)	78. 1/2 (1/2)
79. 1/2 (1/2)	80. 1/2 (1/2)
81. 1/2 (1/2)	82. 1/2 (1/2)
83. 1/2 (1/2)	84. 1/2 (1/2)
85. 1/2 (1/2)	86. 1/2 (1/2)
87. 1/2 (1/2)	88. 1/2 (1/2)
89. 1/2 (1/2)	90. 1/2 (1/2)
91. 1/2 (1/2)	92. 1/2 (1/2)
93. 1/2 (1/2)	94. 1/2 (1/2)
95. 1/2 (1/2)	96. 1/2 (1/2)
97. 1/2 (1/2)	98. 1/2 (1/2)
99. 1/2 (1/2)	100. 1/2 (1/2)




OTHER SIDE SECTION

1. 1/2 (1/2)	2. 1/2 (1/2)
3. 1/2 (1/2)	4. 1/2 (1/2)
5. 1/2 (1/2)	6. 1/2 (1/2)
7. 1/2 (1/2)	8. 1/2 (1/2)
9. 1/2 (1/2)	10. 1/2 (1/2)
11. 1/2 (1/2)	12. 1/2 (1/2)
13. 1/2 (1/2)	14. 1/2 (1/2)
15. 1/2 (1/2)	16. 1/2 (1/2)
17. 1/2 (1/2)	18. 1/2 (1/2)
19. 1/2 (1/2)	20. 1/2 (1/2)
21. 1/2 (1/2)	22. 1/2 (1/2)
23. 1/2 (1/2)	24. 1/2 (1/2)
25. 1/2 (1/2)	26. 1/2 (1/2)
27. 1/2 (1/2)	28. 1/2 (1/2)
29. 1/2 (1/2)	30. 1/2 (1/2)
31. 1/2 (1/2)	32. 1/2 (1/2)
33. 1/2 (1/2)	34. 1/2 (1/2)
35. 1/2 (1/2)	36. 1/2 (1/2)
37. 1/2 (1/2)	38. 1/2 (1/2)
39. 1/2 (1/2)	40. 1/2 (1/2)
41. 1/2 (1/2)	42. 1/2 (1/2)
43. 1/2 (1/2)	44. 1/2 (1/2)
45. 1/2 (1/2)	46. 1/2 (1/2)
47. 1/2 (1/2)	48. 1/2 (1/2)
49. 1/2 (1/2)	50. 1/2 (1/2)
51. 1/2 (1/2)	52. 1/2 (1/2)
53. 1/2 (1/2)	54. 1/2 (1/2)
55. 1/2 (1/2)	56. 1/2 (1/2)
57. 1/2 (1/2)	58. 1/2 (1/2)
59. 1/2 (1/2)	60. 1/2 (1/2)
61. 1/2	

COPY FOR
LONDON OFFICE

RECORDS DEPT.
LONDON

7

Hikosan Maru 
Rudder (as built)

Yka FE Rpt no. 667



© 2021

Lloyd's Register
Foundation

008773-008777-0005