

# Lloyd's Register of Shipping.

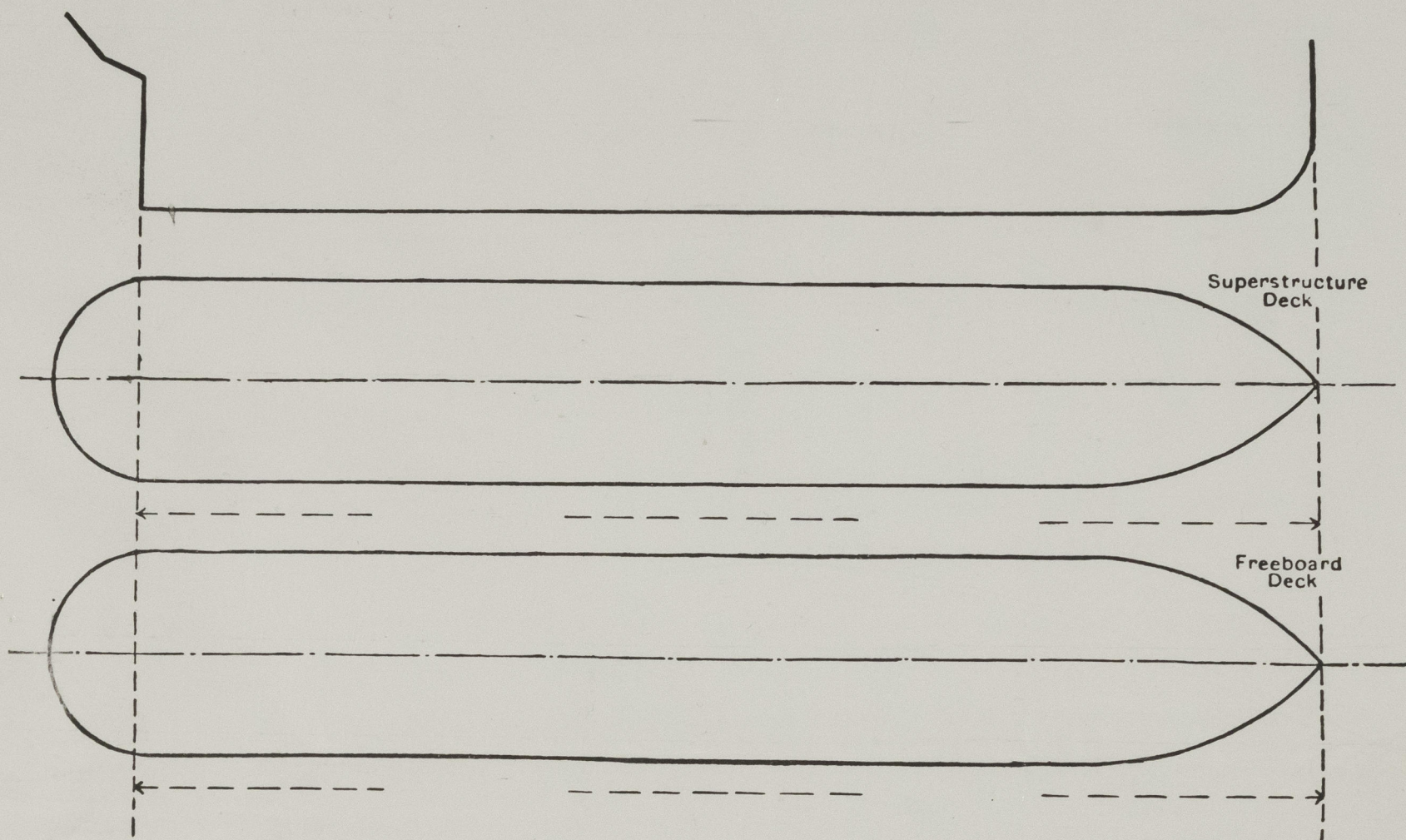
## SURVEYS FOR FREEBOARD.

(CONDITIONS OF ASSIGNMENT.)

Index No. \_\_\_\_\_  
(For London Office only).

Ship's Name GUMHURYAT MISR  
LADY NELSON Port of Survey HALIFAX, N.S.  
Official Number 155046 Surveyor's Signature [Signature]  
Nationality and Port of Registry ALEANDRIA, EGYPT Date of Survey 3<sup>rd</sup> MARCH 1953  
See MONTREAL LETTER DATED 20/2/53

Disposition and dimensions of superstructures, trunks, deckhouses and machinery casings to be inserted in the diagrams and tabular statement:—



Particulars of Superstructures, Trunks, Casings, Deckhouses.

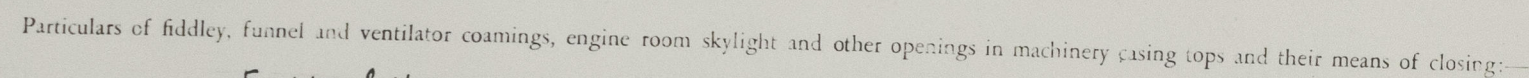
	Coaming	Plating	Stiffeners	Spacing	End Attachments of Stiffeners	Size of Openings	Height of Sills	Height of Casings
Poop Bulkhead ...								
Raised Quarter Deck Bulkhead ...								
Bridge, After Bulkhead ...								
Bridge, Forward Bulkhead ...	6" ANGLES	7/16"		30"		6 Scuttles 24" x 18"		8.5'
Forecastle Bulkhead ...	6"	3/8"	4" x 3" x 3/8"	36"		5'-0" x 2'-3"	18	7.75
Trunk, Aft ...								
Trunk, Forward ...								
Exposed Machinery Casings on Freeboard or Raised Quarter Decks ...								
Exposed Machinery Casings on Superstructure Decks ...								
Machinery Casings within Superstructures not fitted with Class I Closing Appliances ...								
Deckhouses on Flush Deck Ships ...								

Particulars of Closing Appliances (state if capable of being manipulated from both sides).

Poop Bulkhead ...	
Raised Quarter Deck Bulkhead ...	
Bridge, After Bulkhead ...	
Bridge, Forward Bulkhead ...	6 SCUTTLES 24" x 18" filled WITH 1/4" PLATE PLUGS
Forecastle Bulkhead ...	3 Steel DOORS 5'-0" x 2'-3" 1 WOOD DOOR 5'-0" x 2'-0" 1 1/2" FRAME 1" PANEL
Exposed Machinery Casings on Freeboard or Raised Quarter Decks ...	
Exposed Machinery Casings on Superstructure Decks ...	
Machinery Casings within Superstructures not fitted with Class I Closing Appliances ...	ENGINE ROOM ENTERANCE 2.5' x 6.0' Sill 5" WOOD DOOR 1 1/2" FRAME 1" PANEL
Deckhouses on Flush Deck Ships ...	



The following diagrams should be used to indicate the positions of cargo and coaling hatchways, gangway, cargo and coaling ports, ventilators, companionways, etc., which would affect the seaworthiness of the ship:—



FIDDLEY COVERS STEEL HINGED PERMANENTLY ATTACHED

ZONE

Particulars of Ventilators in exposed positions on freeboard and superstructure decks:—

Particulars of Air Pipes in exposed positions on freeboard, raised quarter, or superstructure decks:—

CLOSING APPLIANCES WOOD PLUGS & CANVAS COVERS.

LADY NELSON.

Particulars of Gangway Cargo and Coaling Ports:—											
A B C D E F G H I J K L M N O P Q R S	BRIDGE DECK	P&S	6.7	×	5.75	Non	W.T.	STEEL SECURED WITH 3 STRONG BACKS	7" SILL OPENS INBOARD PASSENGERS	{ 12 SCUTTLES WITH D.L.	
		P&S	13.0	×	2.80	"	"	"	"		"
	MAIN	P&S	14.5	×	2.40	"	"	"	"	"	{ 12 SCUTTLES WITH D.L.
		P&S	6.7	×	4.20	"	"	"	"	"	
		P&S	6.7	×	2.75	"	"	"	"	"	
		P&S	6.0	×	3.75	"	"	"	"	"	
		P&S	5.5	×	2.75	"	"	"	"	"	

THESE DOORS ARE STRONGLY CONSTRUCTED & SECURELY FASTENED. NOSE TESTED & FOUND W.T.

Particulars of Scuppers and Sanitary Discharge Pipes:—

3 SCUPPERS PORT & 2 SCUPPERS STARB<sup>P</sup> FORWARD WELL DISCHARGING BELOW UPPER DECK NOT FITTED WITH VALVES.

1 SCUPPERS PORT & STARBOARD AFT

ALL OTHER SCUPPERS DISCHARGING BELOW UPPER DECK ARE FITTED WITH VALVES ON SHIPS SIDE.

Particulars of Side Scuttles:—

DECK SPACE	No	dias	deadlights.	PLUGS
MAIN CARGO DOORS	6	14	<del>14</del> 6	NIL
--- CREW SPACE & STORES	66	14	<del>58</del> 66	"
UPPER FORECASTLE	22	14	<del>18</del> 22	"
--- SALOON	16	24 x 18	NIL	6
--- PASSENGERS	51	14	"	18
--- " " " "	40	16	"	5
BELOW UPPER DECK	14 (7P.7S)	9"	YES (REF D	B.S. 307)

Dead lights or steel plugs are supplied for all sidescuttles below the bridge, Tack & Freeboard decks and are readily accessible at all times.

Vertical distance of Sill of lowest Side Scuttle above top of keel. 26'-8" c 305'-0" from F.P.

Particulars of Guard Rails:—

FORECASTLE DECK STANCHIONS	3' 8" HIGH	3 RAILS
FORWARD WELL STEEL BULWARK	3' 6" "	
BRIDGE & POOP COMBINED CENTRE	3' 6" "	3 - " TEAK TOP
" & " " AFT	3' 8"	6 - "

Particulars of Gangways, Lifelines, etc:—

~~NO LIFE LINES~~ OR FITTINGS ARE PROVIDED FOR RIGGING  
LIFELINES IN THE FORD WELL

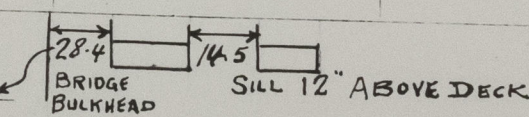
Particulars of Freeing Arrangements.						
	Length of Bulwark	Height of Bulwark	Size of Freeing Ports	Number each side	Area each side	Rule area each side
After Well ... ..						
Forward Well ... ..	70.9'	3.6'	3.5 x 1.8	2	12.6'	14.18

State position of each freeing port

(F. and A. position and height above deck edge)

State whether the freeing ports are fitted with shutters, bars, or rails, and give particulars of such:—HINGED SHUTTERS TWO BARS.

Additional area where sheer is less than standard

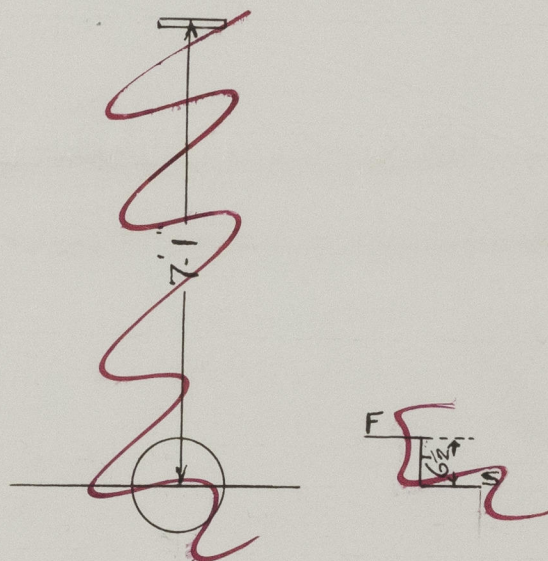
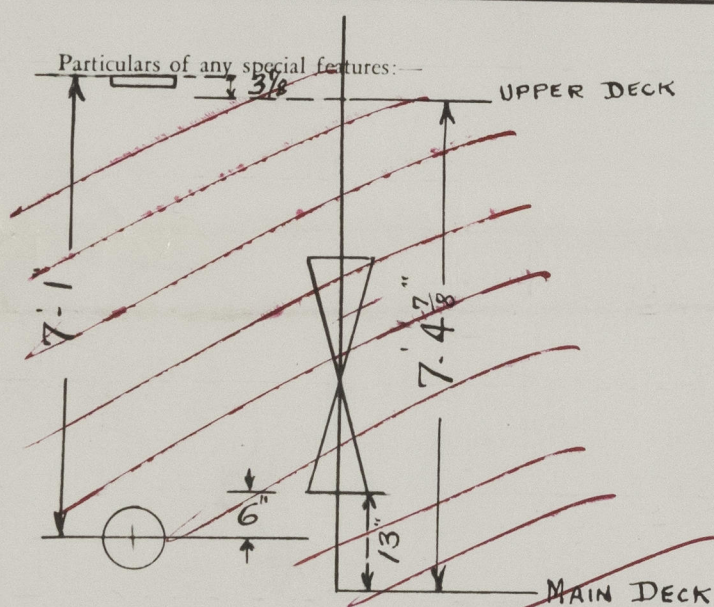




# PARTICULARS OF PROTECTION TO OPENINGS, ETC.

HATCHWAYS ON FREEBOARD AND SUPERSTRUCTURE DECKS.											
			FORECASTLE DECK ←		UPPER DECK →				SUPERSTRUCTURE DECK →		UPPER DECK
Description of Hatchway			FORECASTLE HEAD	STORES UPPER DK	CARGO HATCH No 1	CARGO HATCH No 2	CARGO HATCH No 3	CARGO HATCH No 4	2 STEEL SKYLIGHTS	2 STEEL SKYLIGHTS	STORE UNDER LAUNDRY
Dimensions of Hatchway			3.8 x 2.4	3.6 x 2.8	13.6 x 19.0	18.1 x 19.0	15.1 x 19.0	12.0 x 19.0	3.0 x 2.6	3.0 x 2.1	3.7 x 2.4
COAMINGS	Height above Deck		18"	3"	2.5'	2.5'	2.5'	2.5'	21"	21"	5"
	Thickness { Sides		7/16	3/8	7/16	7/16	7/16	7/16	3/8	3/8	3/8
	Thickness { Ends		7/16	3/8	7/16	7/16	7/16	7/16	3/8	3/8	3/8
	Stiffeners				BA 7" PSFA 1 P&S 1 1/2 DIA	BA 7" PSFA 1 P&S 1 1/2 DIA	BA 7" PSFA 1 P&S 1 1/2 DIA	BA 7" PSFA 1 P&S 1 1/2 DIA			
	Brackets, Stays										
HATCH BEAMS	Number				2	3	2				
	Spacing				4.5	4.5	5.0				
	Scantling and Sketch		NONE	NONE	DA 4 x 3 x 7/16 DEPTH AT END 1'0" AT CENTRE 1'6" THICKNESS 3/16	SAME	SAME	DA 4 x 3 x 7/16 DEPTH AT END 1'0" AT CENTRE 1'6" THICKNESS 3/16	NONE	NONE	NONE
	Bearing Surface										
FORE AND AFTERS	Number										
	Spacing										
	Unsupported Lengths										
	Scantling and Sketch										
	Bearing Surface										
HATCH COVERS	Material		WOOD & STEEL	WOOD	WOOD	WOOD	WOOD	WOOD	STEEL	STEEL	GRATING
	Thickness		2 1/4 x 1/4"	3	2 3/4	2 3/4	2 3/4	2 3/4	WT.	WT.	ONLY.
	How fitted		F&A	P&S	F&A	F&A	F&A	F&A	HINGED	HINGED	
	Bearing Surface		2 1/2	2 1/2	3	3	3	3			
Spacing of Cleats			16		24	24	24	24			
Number of Tarpaulins			2		3	3	3	3			

\*Are wood fore and afters steel shod at all bearing surfaces? NIL  
 Are battens and wedges efficient and in good condition? YES  
 Are tarpaulins in good condition and in accordance with rule requirements? YES.  
 Are lashings provided in accordance with rule requirements? YES



Endorsement at first survey and at surveys for renewal of Certificate:—

The fittings and appliances are in accordance with the particulars shown on this form (or as now modified) and are in good condition.