

# YARD NOS. 376 & 377.

## STERNFRAME & RUDDER.

See Cook Nelson & General No. 777.  
 Scales: - 1", 1 1/2" & 3" = 1 Foot.

STERNFRAME & RUDDER TO BE TO LLOYDS REQUIREMENTS AND TESTS.

LEADING DIMENSIONS: LENGTH E.L. 133'-4" BREADTH MLD. 26'-6" DEPTH MLD. 14'-0"

### NUMERALS FOR RUDDER.

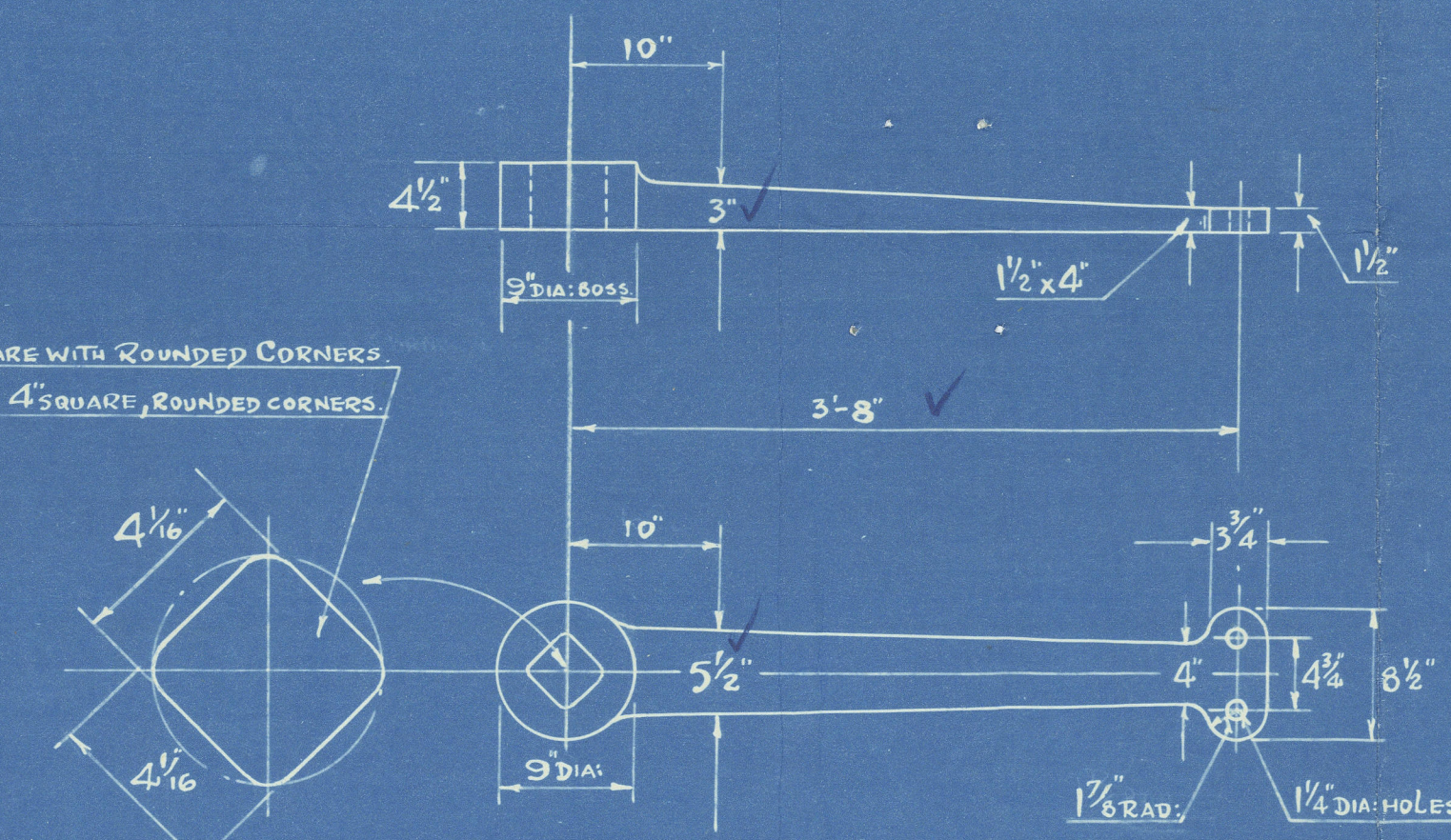
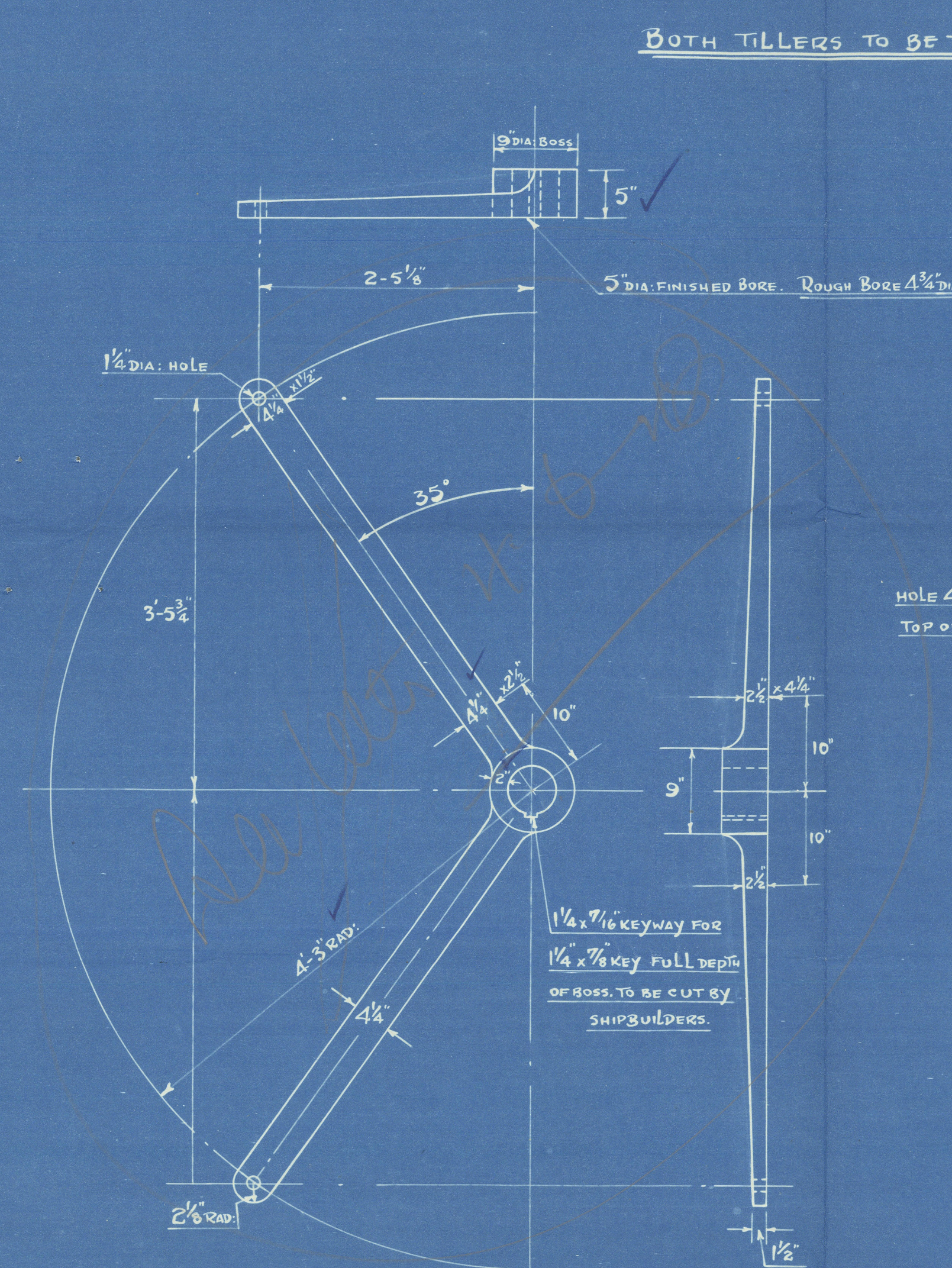
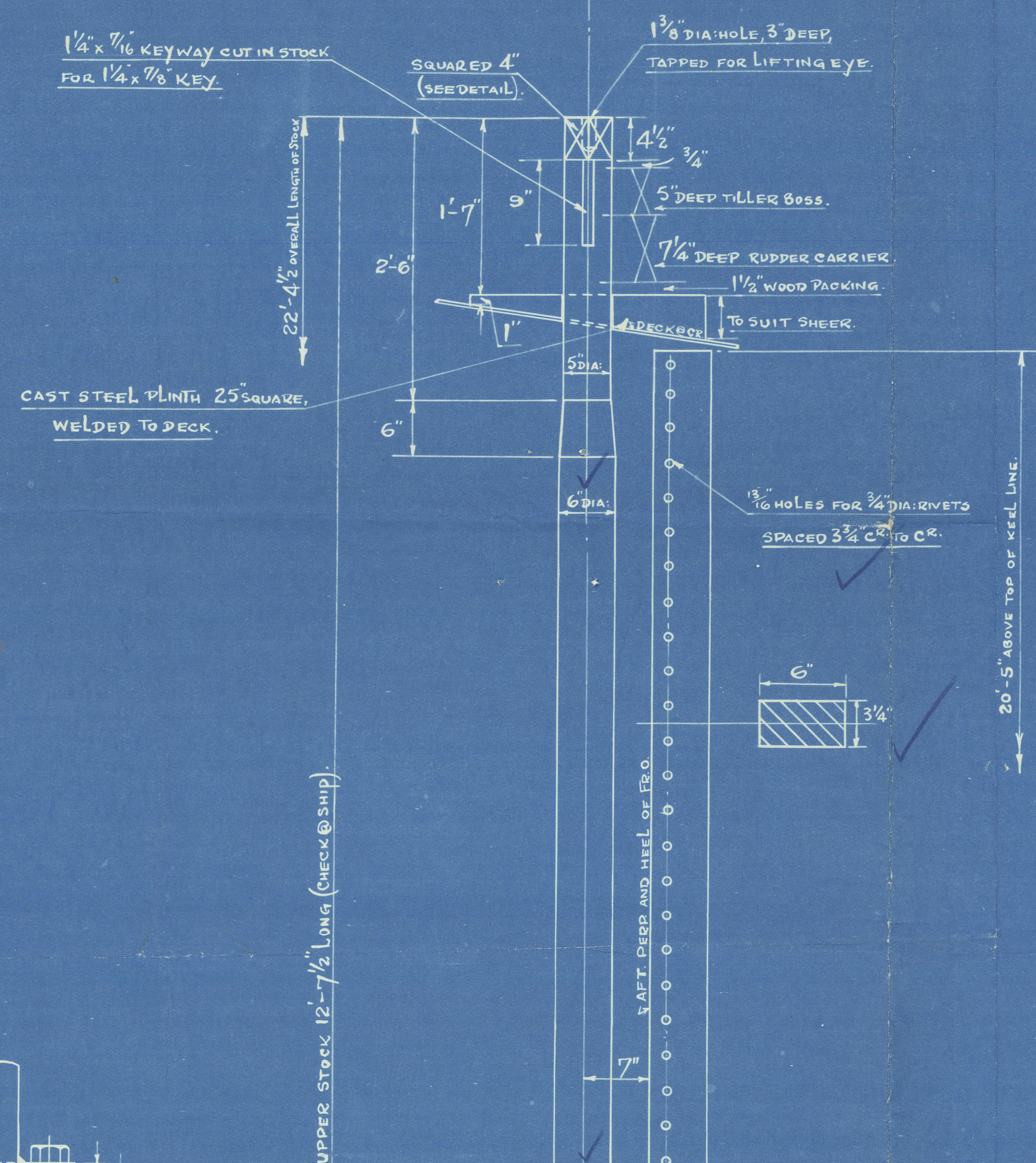
TOTAL AREA = 40.26 SQ. FT.

AREA OF PORTION ABAFT AXIS = 30.29 SQ. FT.

CG. OF PORTION ABAFT AXIS (ABAFT CROPPING LINES) = 1.65 FT.

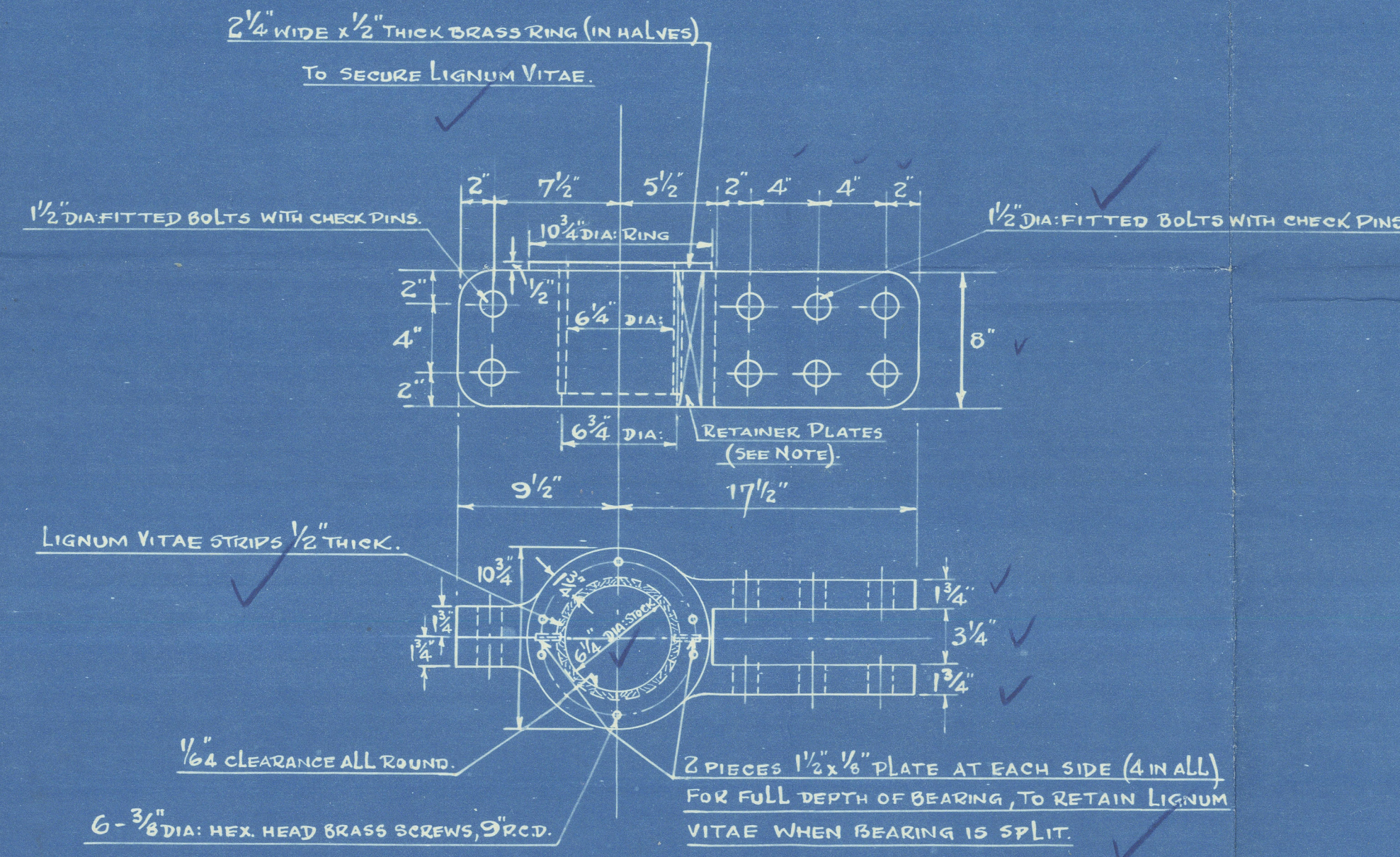
AXD = 49.98. SPEED 10 1/2 KNOTS.

RUDDER TO SWING OVER TO 35° EACH SIDE OF C. STOPS TO BE FITTED ON DECK.

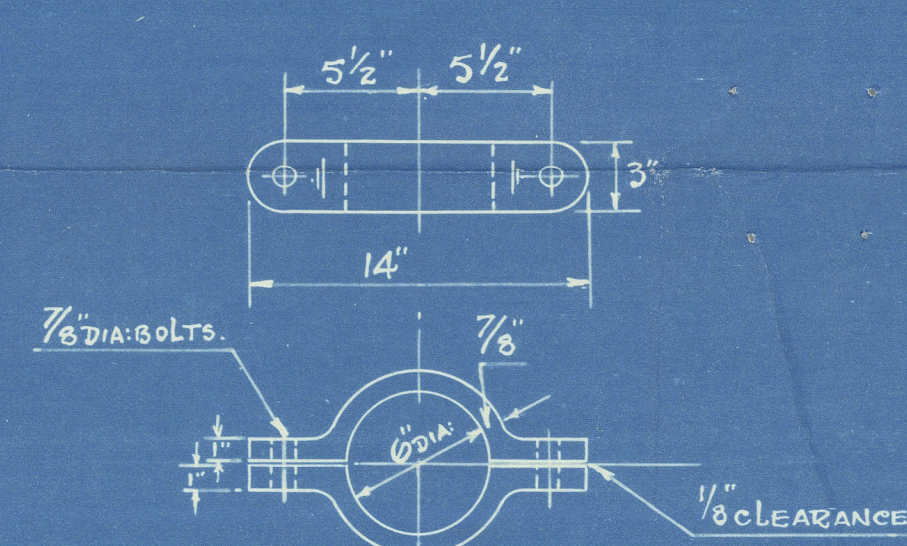


DETAIL OF EMERGENCY TILLER.  
 Scale: - 1" = 1 FT.

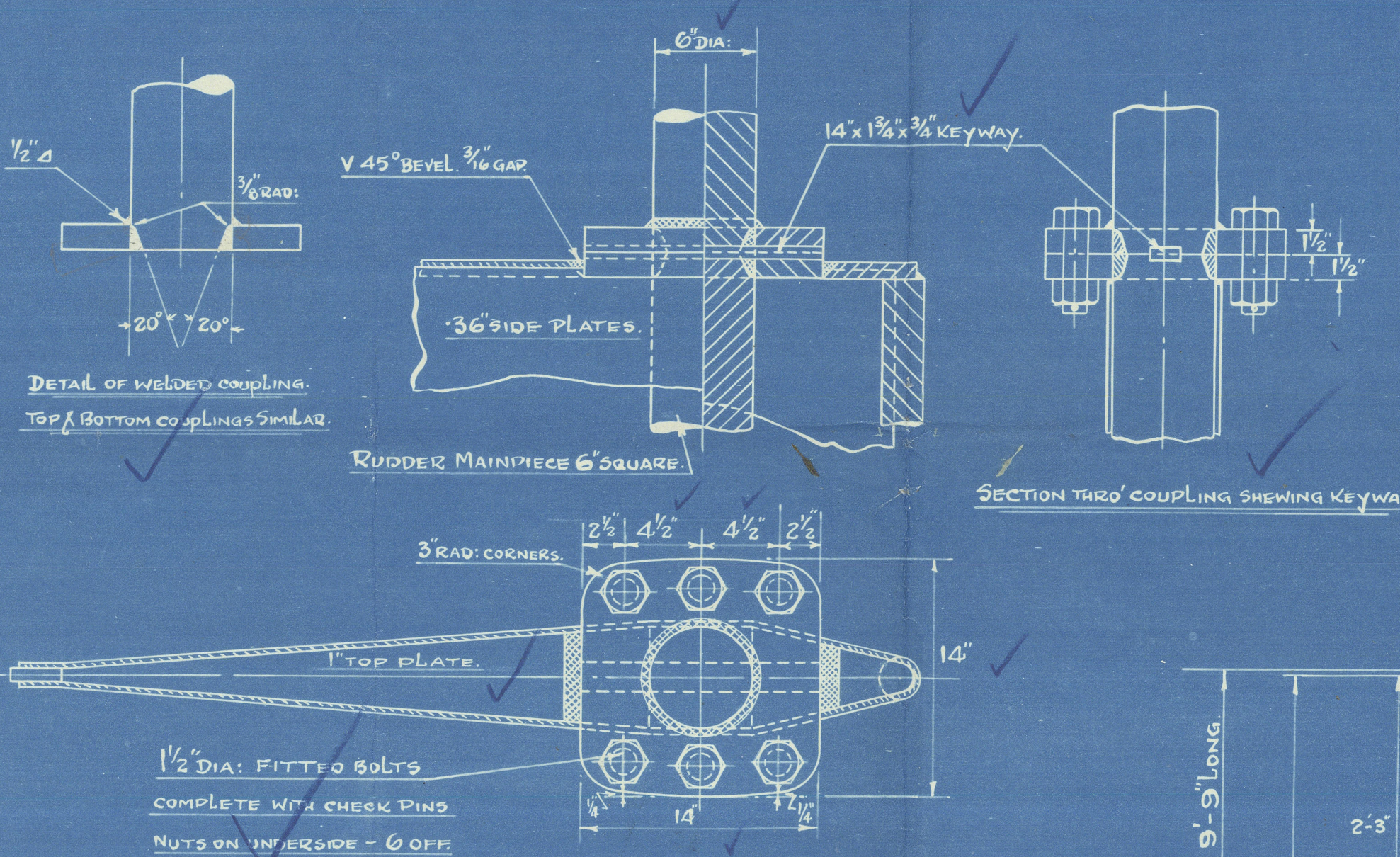
DETAIL OF TILLER.  
 Scale: - 1 1/2" = 1 FT.



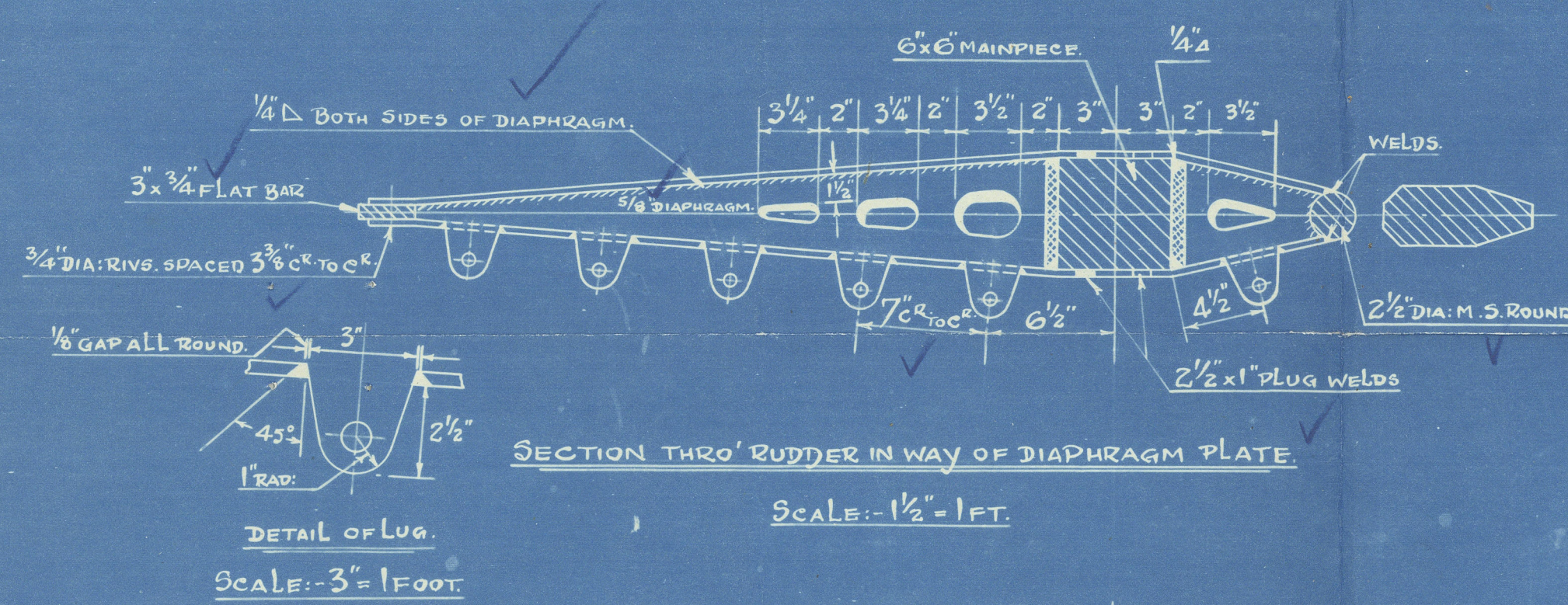
DETAIL OF NECK BEARING. (IN HALVES).  
 Scale: - 1 1/2" = 1 FT.



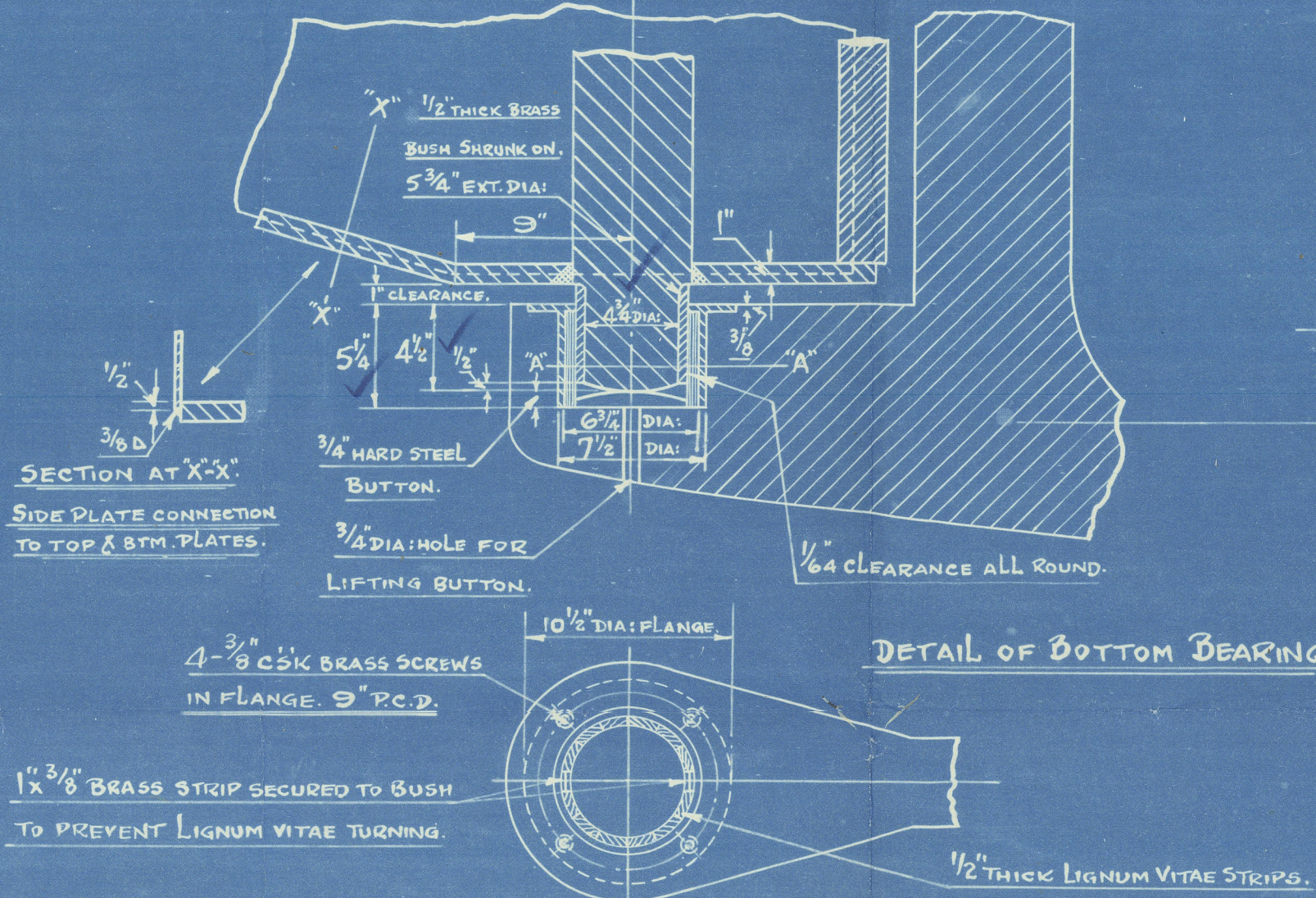
DETAIL OF LOCKING CLIP  
 Scale: - 1 1/2" = 1 FT.



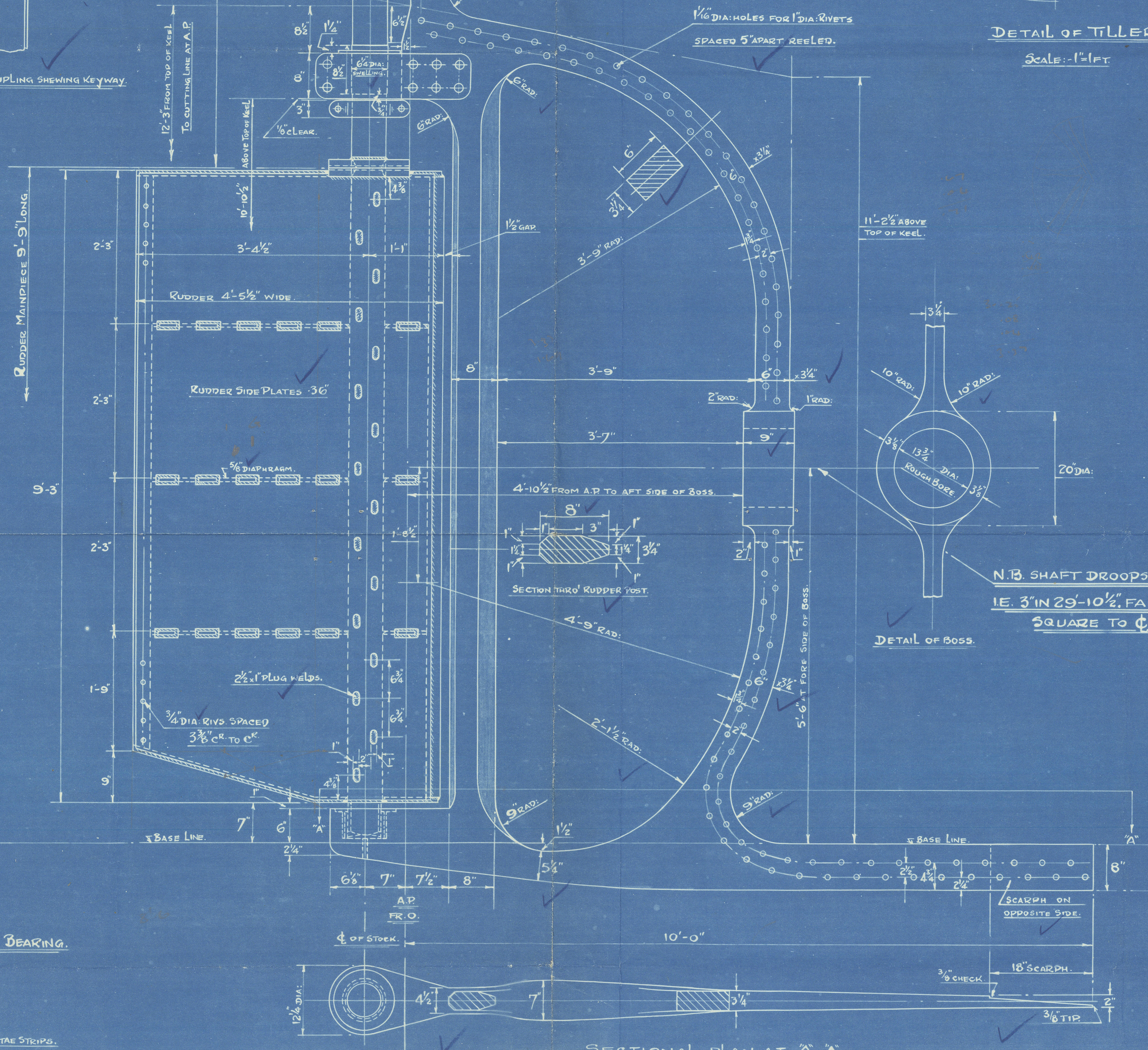
DETAILS OF COUPLINGS,  
 RUDDER TOP PLATE, ETC.  
 Scale: - 1 1/2" = 1 FT.



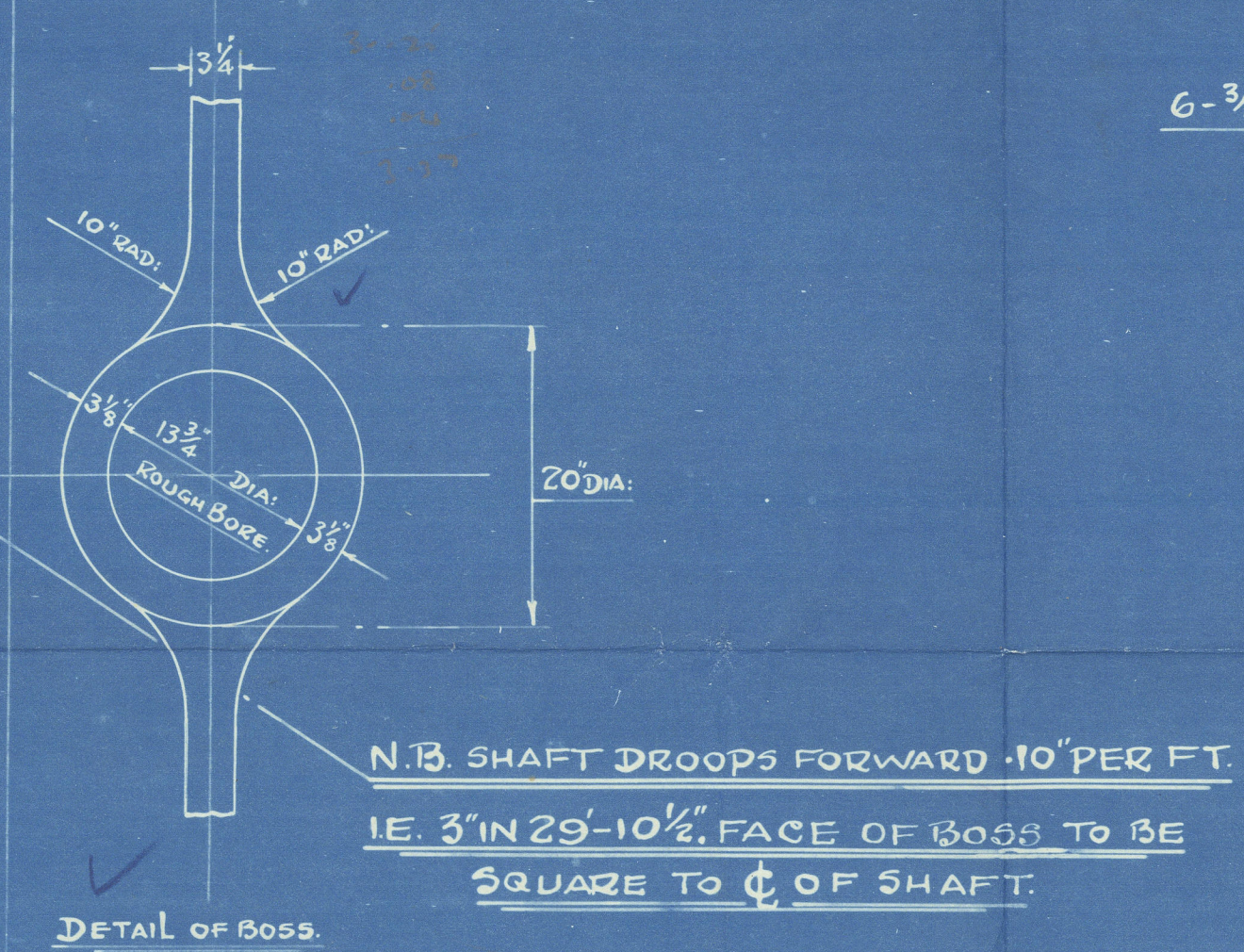
SECTION THREE' RUDDER IN WAY OF DIAPHRAGM PLATE.  
 Scale: - 1 1/2" = 1 FT.



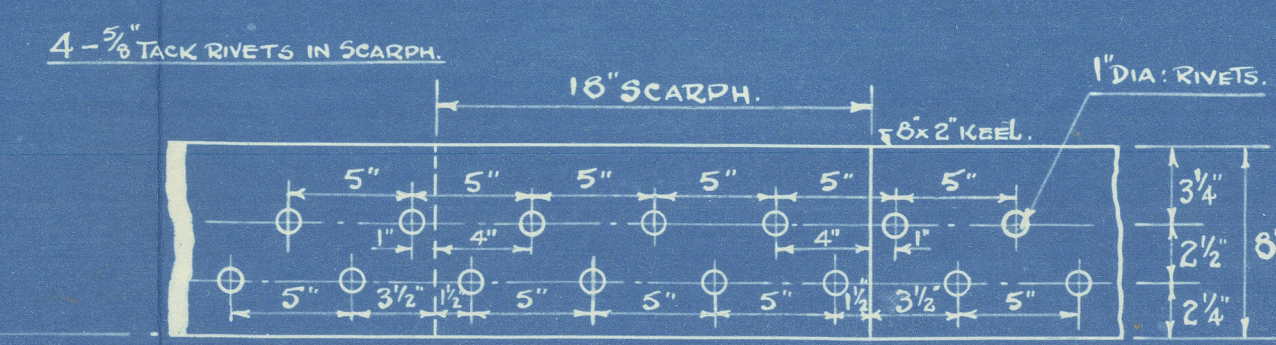
SECTION AT 'A-A'  
 Scale: - 1 1/2" = 1 FT.



SECTIONAL PLAN AT 'A-A'



N.B. SHAFT DROOPS FORWARD .10\"/>
 IE. 3\"/>



DETAIL OF TYPICAL KEEL SCARP INCLUDING KEEL TO STERNFRAME.  
 Scale: - 1 1/2" = 1 FOOT.

STERNFRAME, RUDDER AND TILLERS.			
SHIP NOS. 376 & 377	Job -		
FIVE OIL BURNING STEAM TRAWLERS			
SCALE: 1 1/2" = 1 FOOT	DRN. 10.8. 12.3.47		
DRAWN BY 11.	DRAWER No. 14		
EDWARDS IRONWORKS LTD.	PRINTED BY		
CROWN WORKS	423021		
LOWEST	DATE		
12.13.47			



008753 - 008758 - 0105

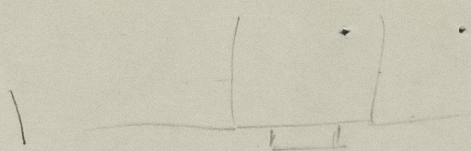
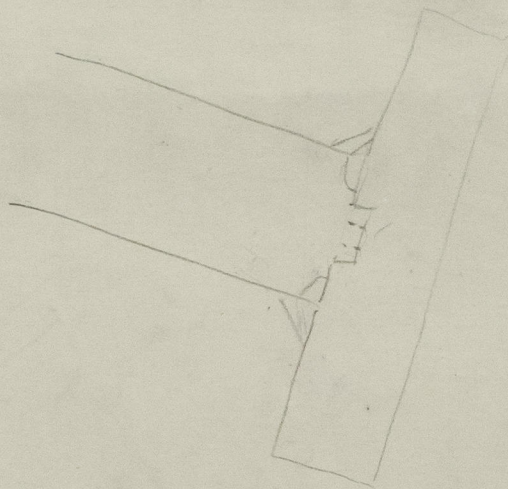
RECORDS DEPT.,  
LONDON

"BRACONCLEN" ★

3

RICHARD'S IRONWORKS  
YARD Nos. 376-7.

STERNFRAME & RUDDER

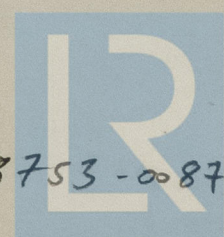
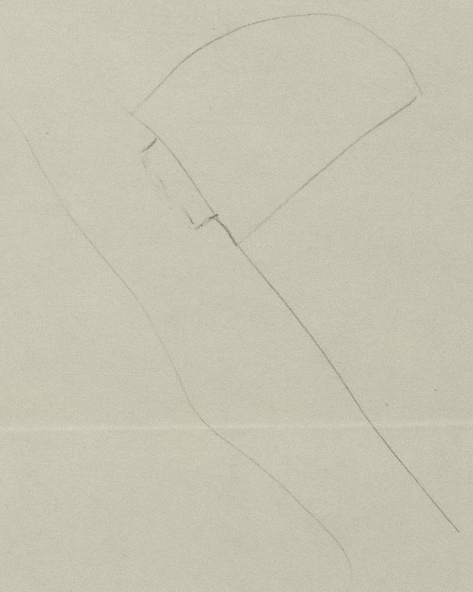
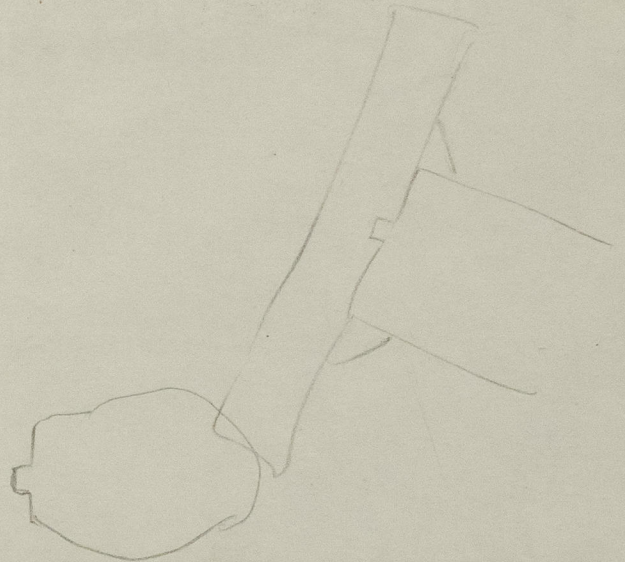




Yards Nos 376-377.  
Sheepen & Ludden.

008753-008758-0105

RICHARDS IRONWORKS LIMITED	
SHIPBUILDERS & ENGINEERS	
LOWESTOFT	
SHIP NO:	
Dwg. No.	Print No.
Job No.	Date



© 2021

008753-008758-0105  
Lloyd's Register  
Foundation