

24 FEB 1947

Index No. 38948  
(For London Office only).

*urgent*

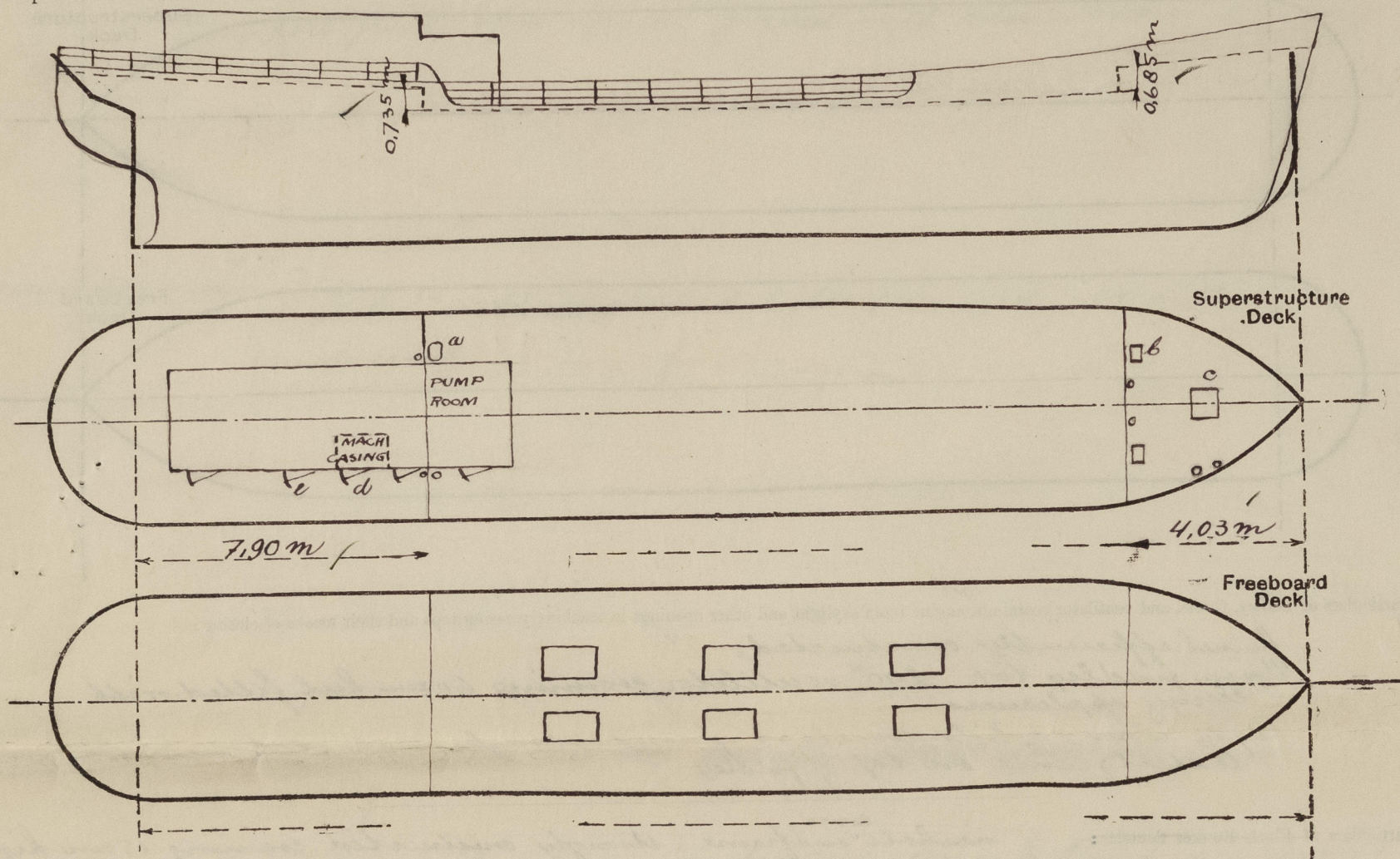
# Lloyd's Register of Shipping.

## SURVEYS FOR FREEBOARD.

(CONDITIONS OF ASSIGNMENT.)

Ship's Name *NORVEST*Port of Survey *Rotterdam*Official Number *V*Surveyor's Signature *M. Muskoo*Nationality and Port of Registry *British Singapore*Date of Survey *21<sup>st</sup> February 1947*

Disposition and dimensions of superstructures, trunks, deckhouses and machinery casings to be inserted in the diagrams and tabular statement:—



Particulars of Superstructures, Trunks, Casings, Deckhouses.

	Coaming	Plating	Stiffeners	Spacing	End Attachments of Stiffeners	Size of Openings	Height of Sills	Height of Casings
Poop Bulkhead ... ..	✓							
Raised Quarter Deck Bulkhead ...		7mm	L75x75x8	55cm	knus	✓		
Bridge, After Bulkhead ... ..	✓							
Bridge, Forward Bulkhead ... ..	✓							
Forecastle Bulkhead ... ..	✓	7mm	could not be ascertained but strongly constructed			✓		
Trunk, Aft ... ..	✓							
Trunk, Forward ... ..	✓							
Exposed Machinery Casings on Freeboard or Raised Quarter Decks ...		7mm	length of casing only 2 frame spaces			m/m w/m 1450 x 650	425 w/m	2.07 m
Exposed Machinery Casings on Superstructure Decks ... ..			stiffened by engine room reutil.					
Machinery Casings within Superstructures not fitted with Class I Closing Appliances ... ..			also welded to casing					
Deckhouses on Flush Deck Ships ...								

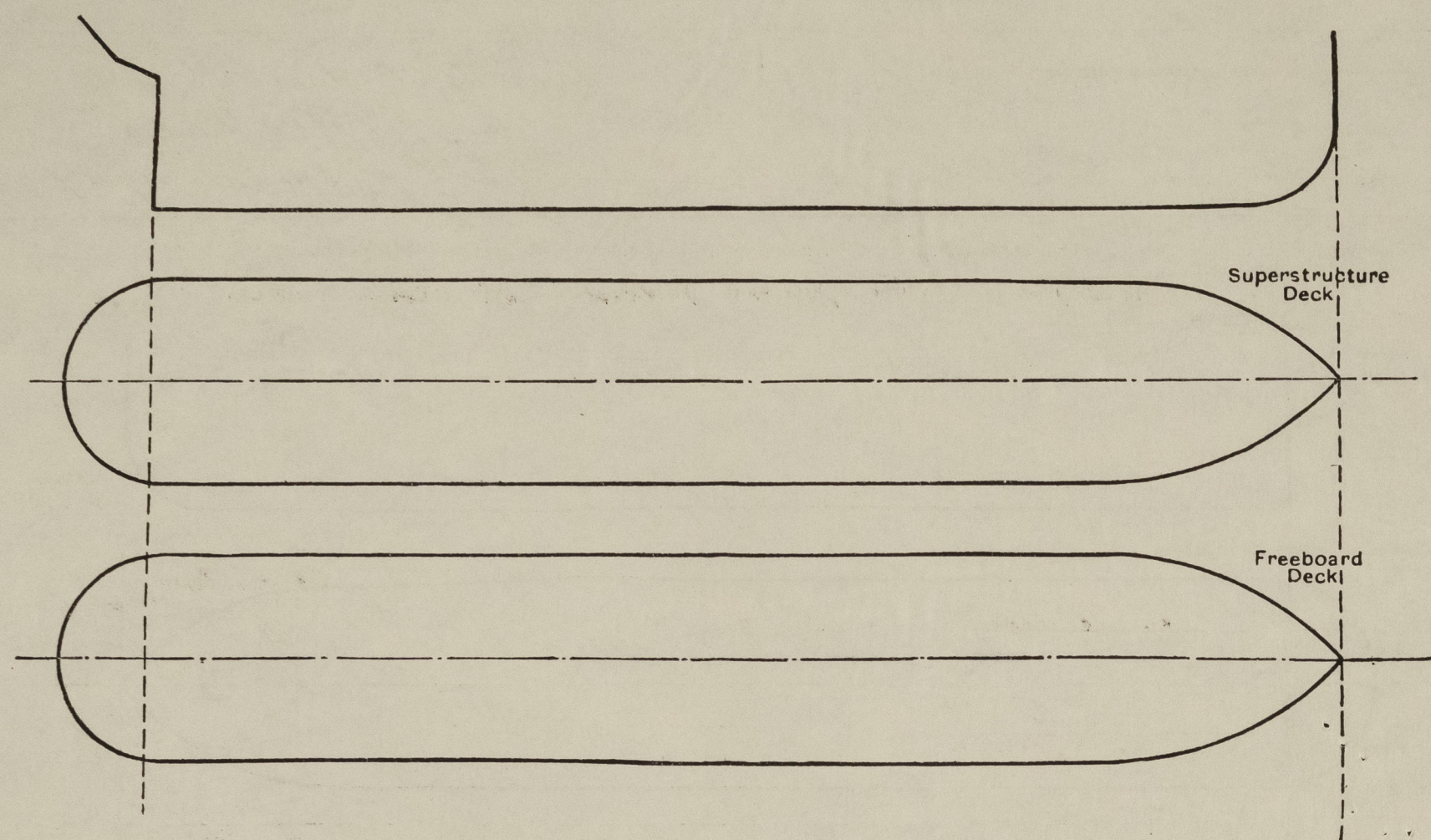
Particulars of Closing Appliances (state if capable of being manipulated from both sides).

Poop Bulkhead ... ..	✓	
Raised Quarter Deck Bulkhead ...	✓	No opening
Bridge, After Bulkhead ... ..	✓	
Bridge, Forward Bulkhead ... ..	✓	
Forecastle Bulkhead ... ..	✓	No opening
Exposed Machinery Casings on Freeboard or Raised Quarter Decks ...	✓	steel watertight door capable of being manipulated from both sides (d)
Exposed Machinery Casings on Superstructure Decks ... ..	✓	
Machinery Casings within Superstructures not fitted with Class I Closing Appliances ... ..	✓	
Deckhouses on Flush Deck Ships ...	✓	



# PARTICULARS OF PROTECTION TO OPENINGS, ETC.

The following diagrams should be used to indicate the positions of cargo and coaling hatchways, gangway, cargo and coaling ports, ventilators, companionways, etc., which would affect the seaworthiness of the ship:—



Particulars of fiddley, funnel and ventilator coamings, engine room skylight and other openings in machinery casing tops and their means of closing:—

Funnel efficiently constructed;  
Upon fiddley top 2-10" ventilator coamings 60 cm high, filled with closing appliances  
Engine room skylight 100x60 cm of wood; strongly constructed and secured to steel frame on top of fiddley

Particulars of Flush Bunker Scuttles:—

a) manhole <sup>cover</sup> outframe; strongly constructed coaming 15 cm high  
b) steel hatch 35x50 cm; height 12 cm; steel w. & cover fastened with 5-3/4" toggles (over cofferdam)  
c) steel hatch 50x50 cm; height 50 cm; strongly constructed; steel w. & cover fastened with 5-3/4" toggles (over f'ele space)

Particulars of Companionways:—

Companionway marked with 'c', leading to crew's quarters; door opening 1470x625 mm; sill 420 mm  
Strong wood door capable of being manipulated from both sides

Particulars of Ventilators in exposed positions on freeboard and superstructure decks:—

One ventilator 4" on f'ele deck coaming 46 cm high; thickness 7 mm capable of being closed with wood plug and canvas cover

Particulars of Air Pipes in exposed positions on freeboard, raised quarter, or superstructure decks:—

On f'ele deck: 2-2" airpipes 20 cm high closed with wire gauze diaphragms  
1-2" " " " " " wooden plug  
On main deck 1-3" airpipe 1.20 m high } fitted with wire  
On R. Q. " 2-2" " 0.90 m " } gauze diaphragm and  
efficiently flayed

Particulars of Gangway Cargo and Coaling Ports:— ✓

*Norvest.*

Particulars of Scuppers and Sanitary Discharge Pipes:—

No scuppers or sanitary discharge pipes from spaces below the R. Q. deck  
No scupper pipes on maindeck through deck plating  
Scuppers from other spaces fitted with storm valves

Particulars of Side Scuttles:—

filled with steel dead lights (hinged) strongly constructed

Vertical distance of Sill of lowest Side Scuttle above top of keel no side scuttles below deckline ✓

Particulars of Guard Rails:—

guard rails on main deck abaft closed bulwark (see sketch) 1 m high 3 L 120x80x9 on top with 2 rods; stanchions 1.70 m apart.  
guard rails on main deck 980 m high with 2 rods; stanchions 1.10 m apart.  
bulwark on f'ele and fore part of main deck; strongly constructed; height on f'ele from 0.85 to 0.65 m; on maindeck from 1.10 to 1.30 m

Particulars of Gangways, Lifelines, etc.:—

Lifelines are provided ✓  
No gangway fitted ✓

## Particulars of Freeing Arrangements.

	Length of Bulwark	Height of Bulwark	Size of Freeing Ports	Number each side	Area each side	Rule area each side
After Well ... ..			no freeing ports			
Forward Well ... ..						

State position of each freeing port ... .. { After Well:—  
(F. and A. position and height above deck edge) { Forward Well:—

State whether the freeing ports are fitted with shutters, bars, or rails, and give particulars of such:—

Additional area where sheer is less than standard.

edge of sheer stroke 20 cm above deck.



PARTICULARS OF PROTECTION TO OPENINGS, ETC.

HATCHWAYS ON FREEBOARD AND SUPERSTRUCTURE DECKS.											
Description of Hatchway		1	2	3							
Dimensions of Hatchway		1100x775 mm									
COAMINGS	Height above Deck		790 mm								
	Thickness		7 mm								
	Sides										
	Ends										
	Stiffeners										
	Brackets, Stays										
HATCH BEAMS	Number										
	Spacing										
	Scantling and Sketch										
	Bearing Surface										
FORE AND AFTERS	Number										
	Spacing										
	Unsupported Lengths										
	Scantling* and Sketch										
	Bearing Surface										
HATCH COVERS	Material		steel								
	Thickness		9 mm								
	How fitted		fastened with								
	Bearing Surface		14- 3/4" laggles.								
Spacing of Cleats			23 cm								
Number of Tarpaulins											
<p>*Are wood fore and afters steel shod at all bearing surfaces ?</p> <p>Are battens and wedges efficient and in good condition ?</p> <p>Are tarpaulins in good condition and in accordance with rule requirements ?</p> <p>Are lashings provided in accordance with rule requirements ?</p>											

Particulars of any special features :—

Endorsement at first survey and at surveys for renewal of Certificate :—

The fittings and appliances are in accordance with the particulars shown on this form (or as now modified) and are in good condition.



© 2021

Lloyd's Register Foundation