

RIVETING NOTES

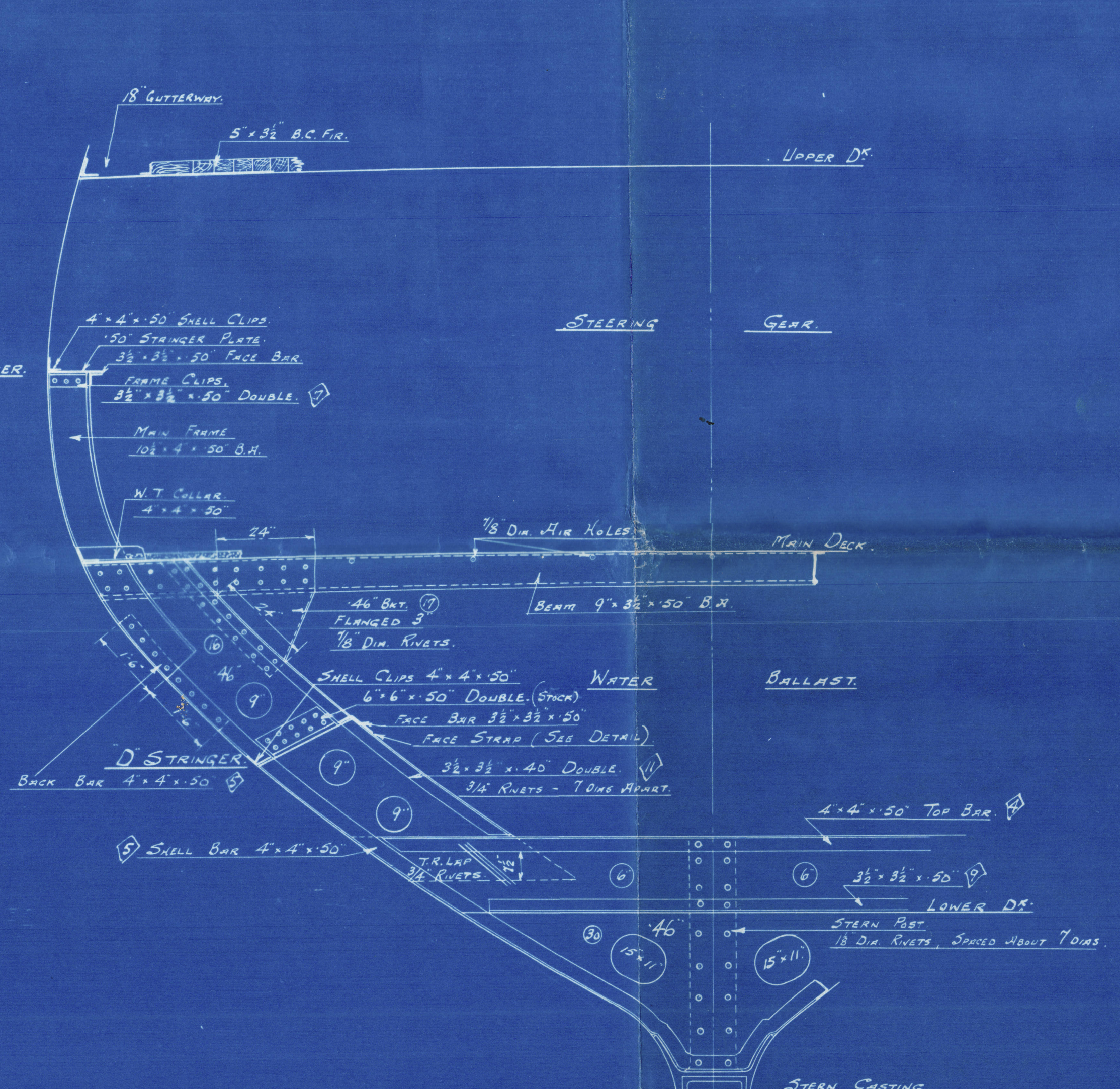
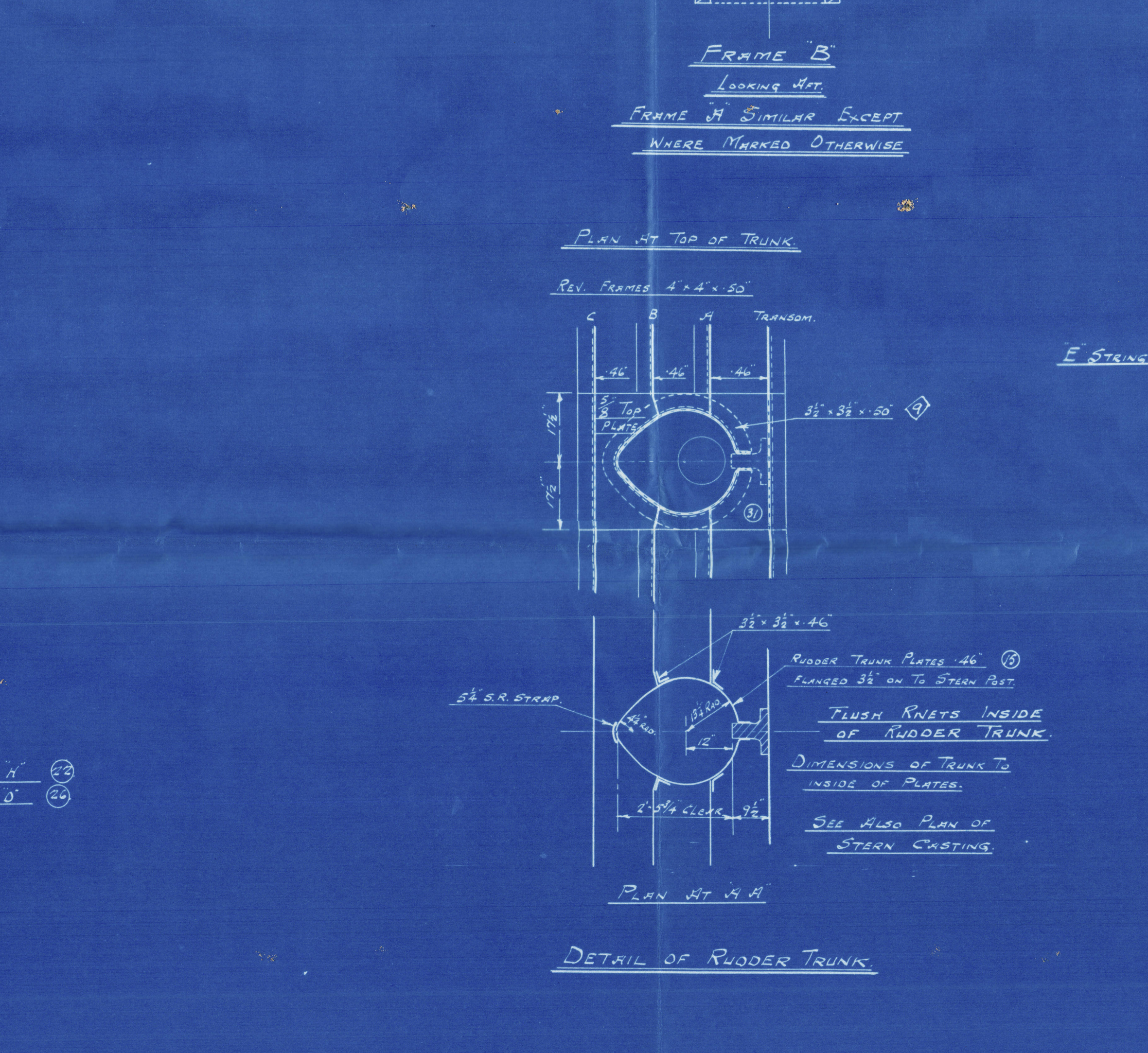
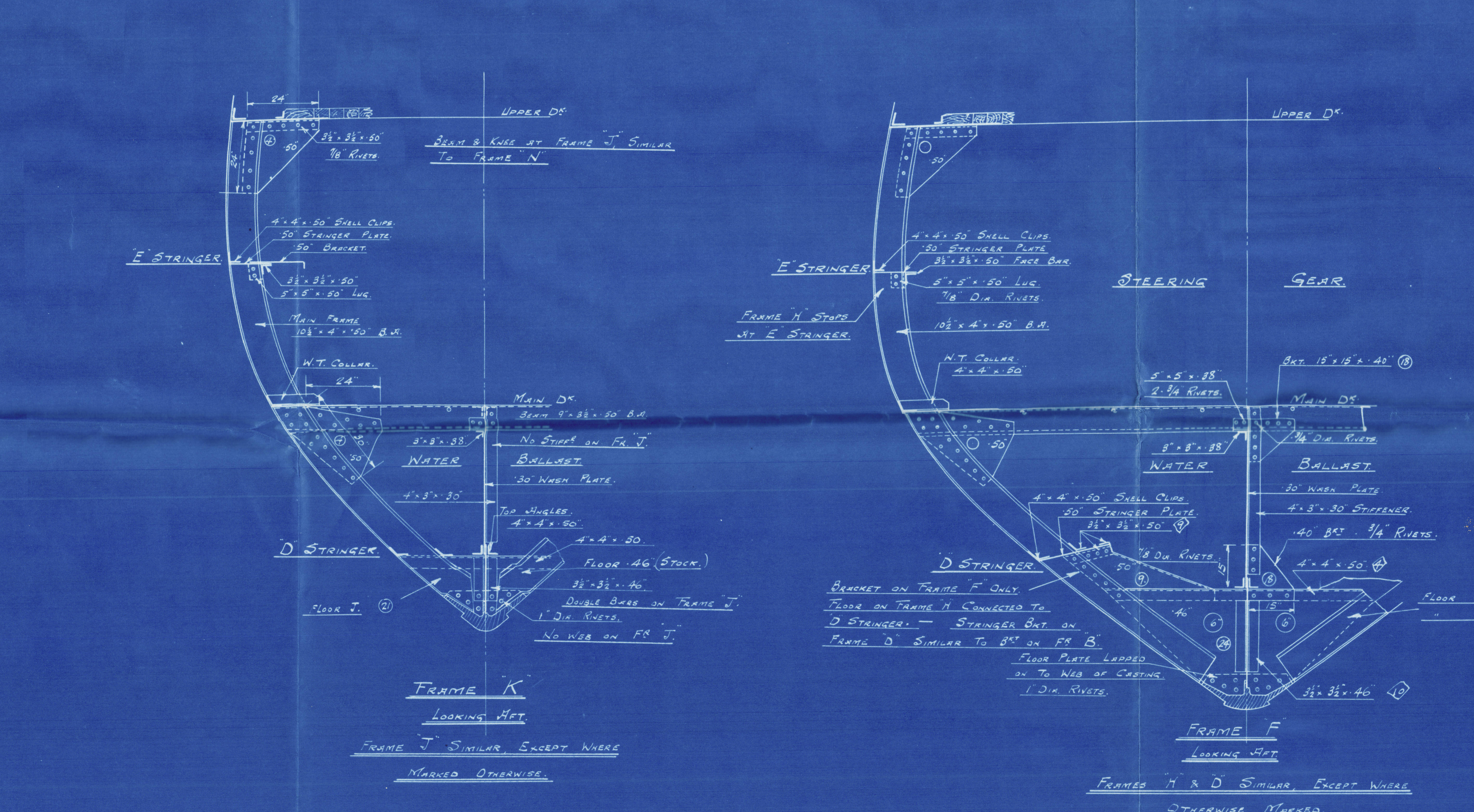
FRAMES TO SHELL (1/8" ICE BELT) 7/8" DIA. 7 DIA. WELD. 3/8" DIA. WELD TANGS
 FLOORS 7/8" 7" 8" "

WELD PLATE IN STEEL PLATE TANG

STRINGERS TO WELD PLATE 7/8" DIA. 7 DIA. WELD.
 TOP BAR 3/8" 6" "
 WELD KEEL TOP BAR 3/8" 5" "

OTHER RIVETING AS SHOWN

NOTE
 7/8" DIA. AIR HOLES TO BE RIVETED IN VERTICAL
 PLACES OF BEAMS IN STEEL PLATE TANG. AS
 NEAR TO TOP OF BEAM AS POSSIBLE AND
 SPACED ABOUT 30" APART.



MATERIAL ORDER MARK S.F.

APPROVED
 MAY 6 1909
 LLOYD'S REGISTER OF SHIPPING
 LONDON

Surveyors Copy

HULL N° 5
STEEL FRAMING
HALIFAX SHIPYARDS LIMITED
 HALIFAX NOVA SCOTIA

Scale 1/8" = 1' 0"
 Drawn by T.F.
 Traced by
 Checked by
 Date MAY 20 1909

No. 5-40