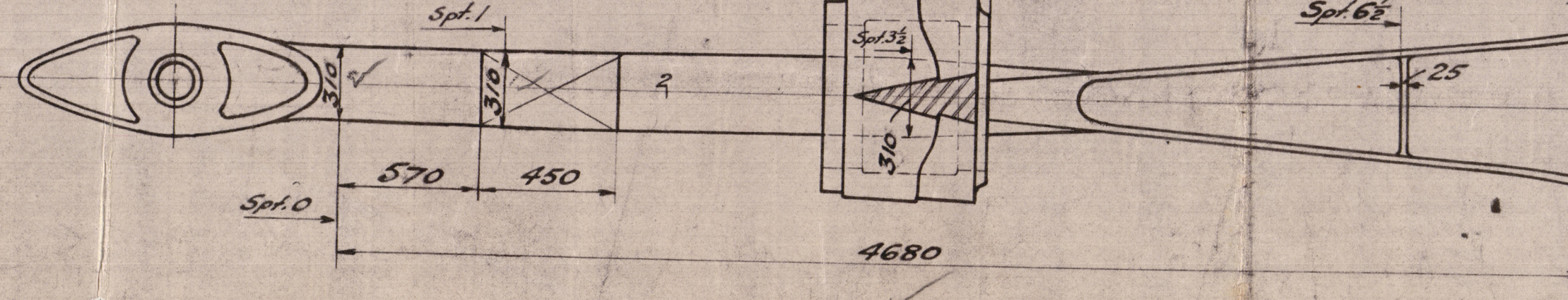
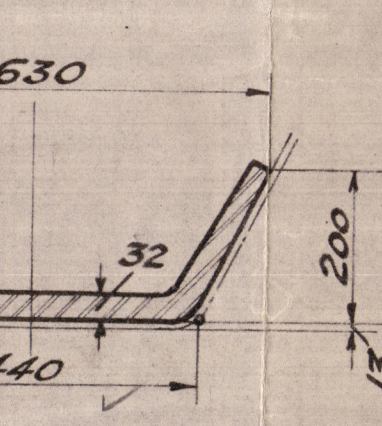
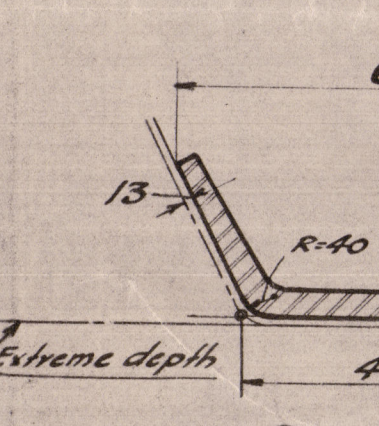
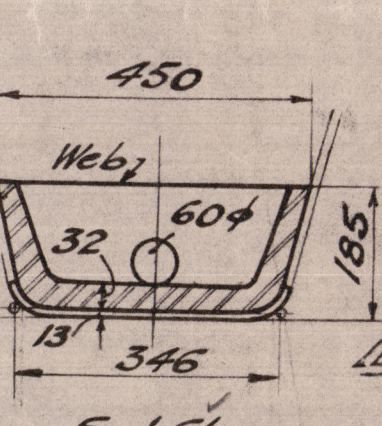
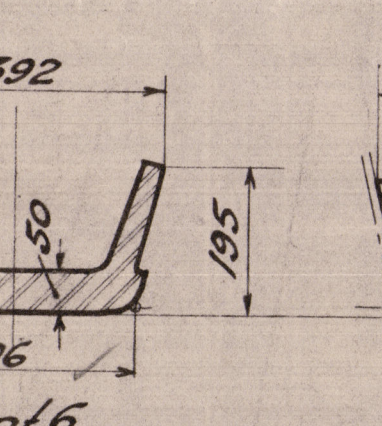
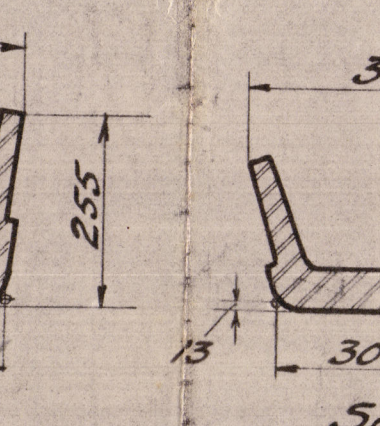
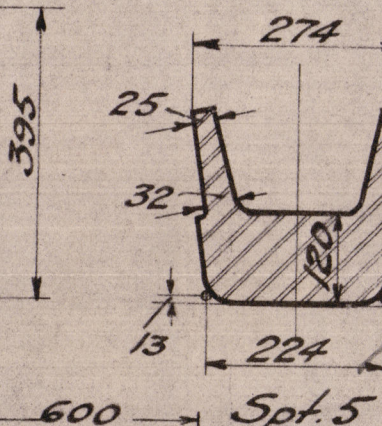
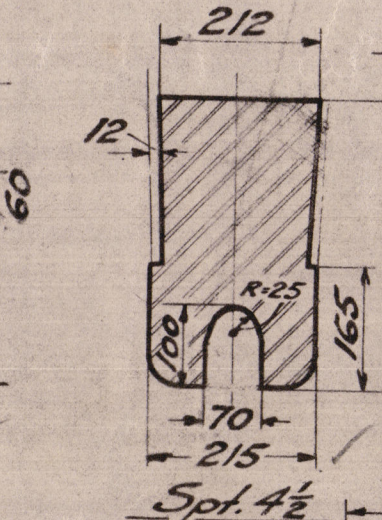
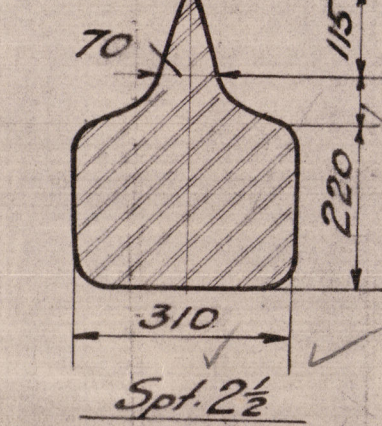
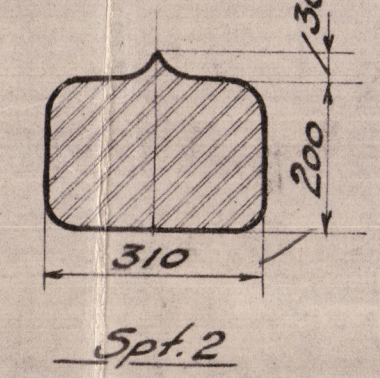
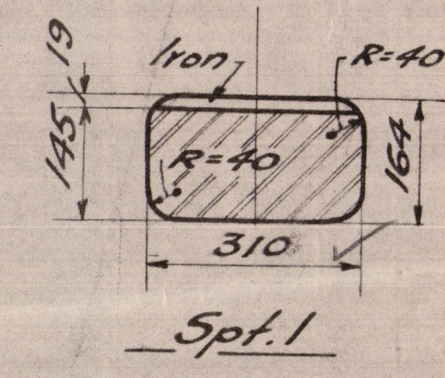
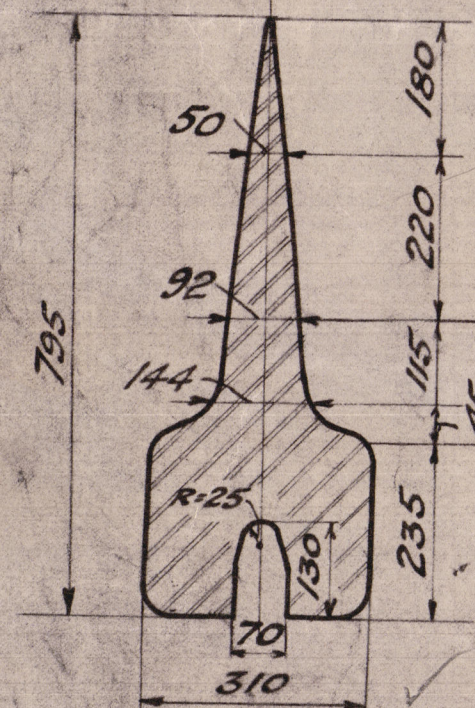
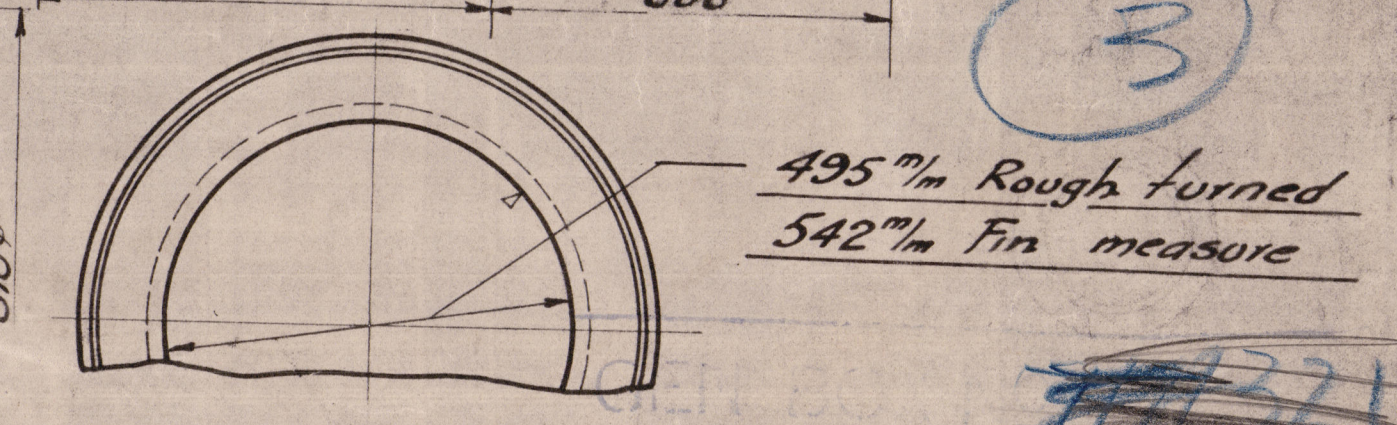
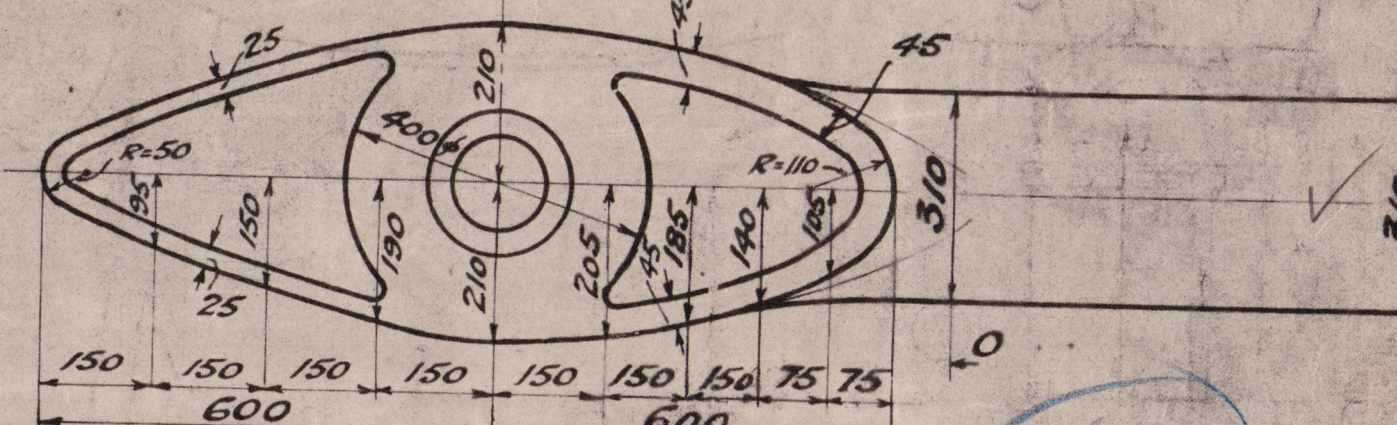
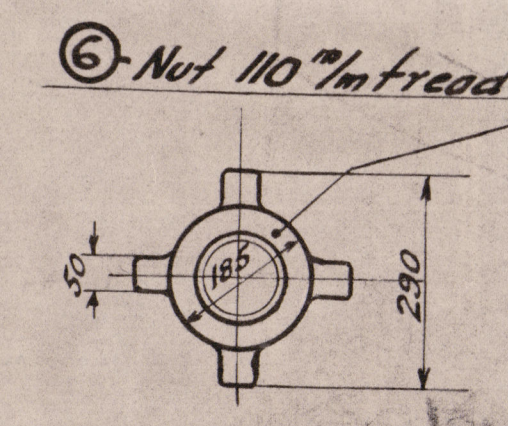
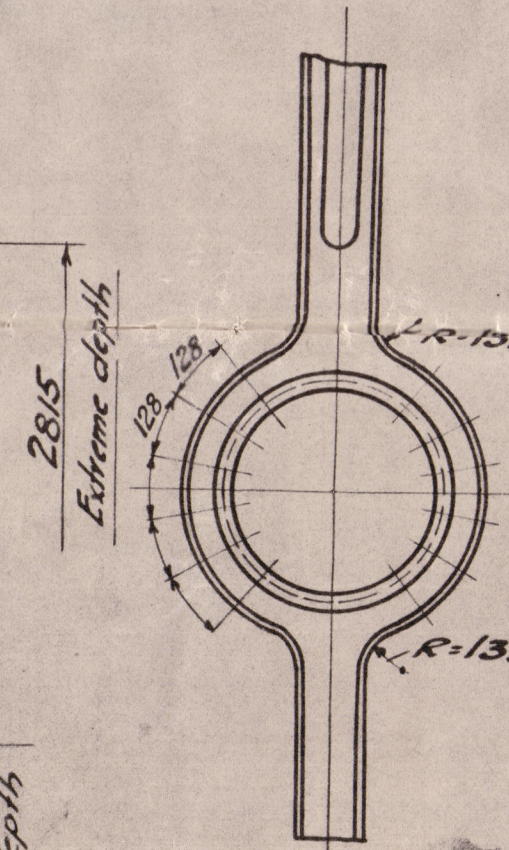
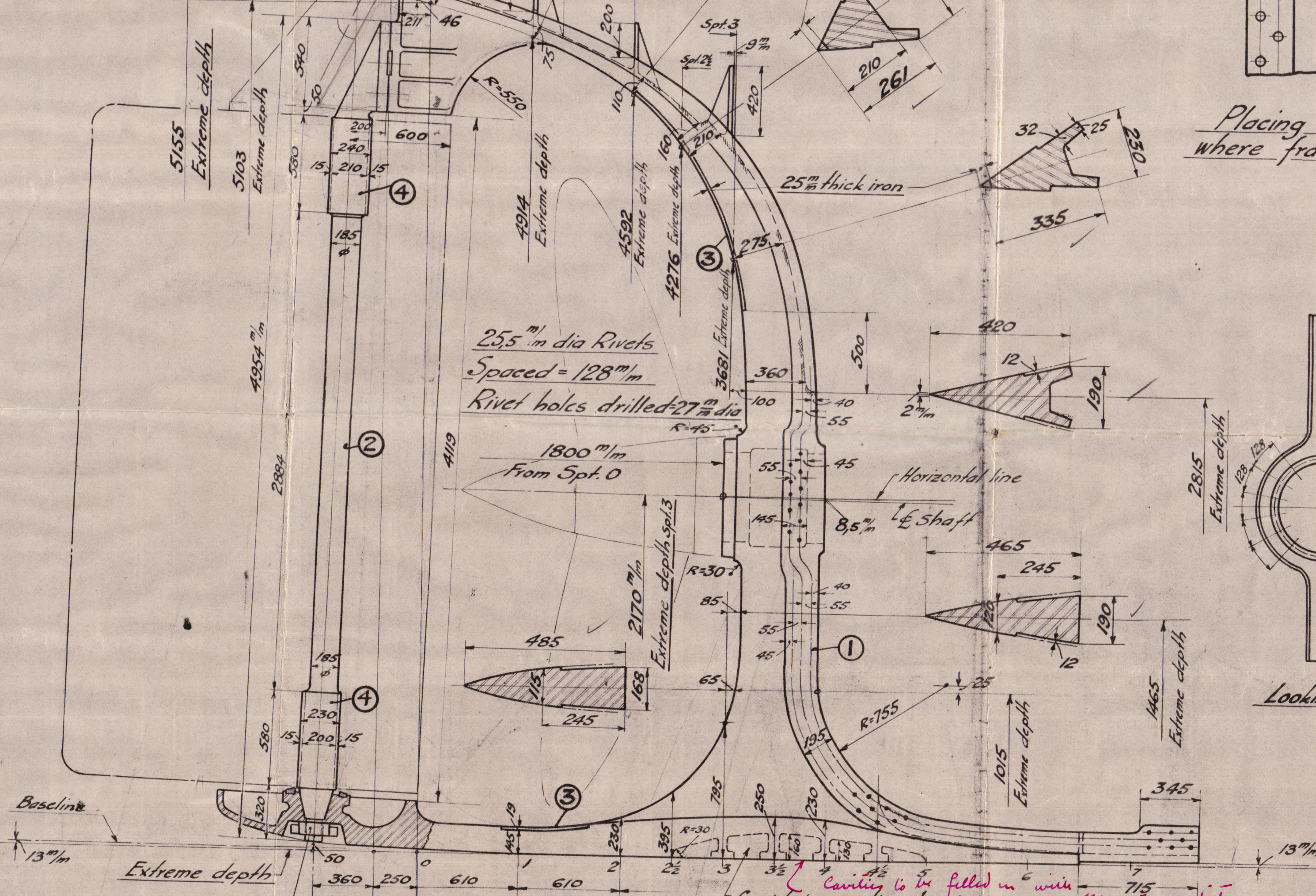
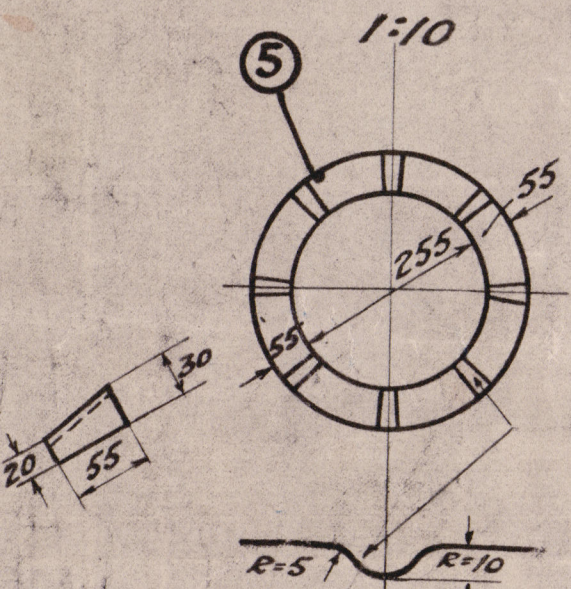
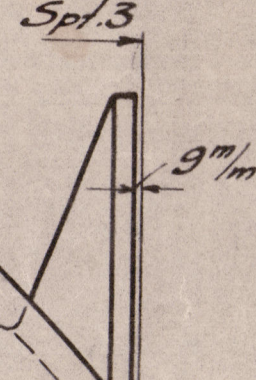
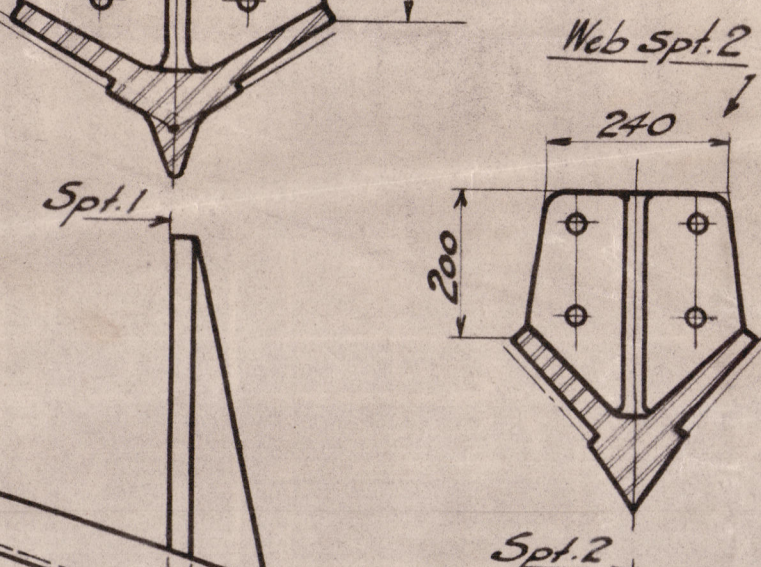
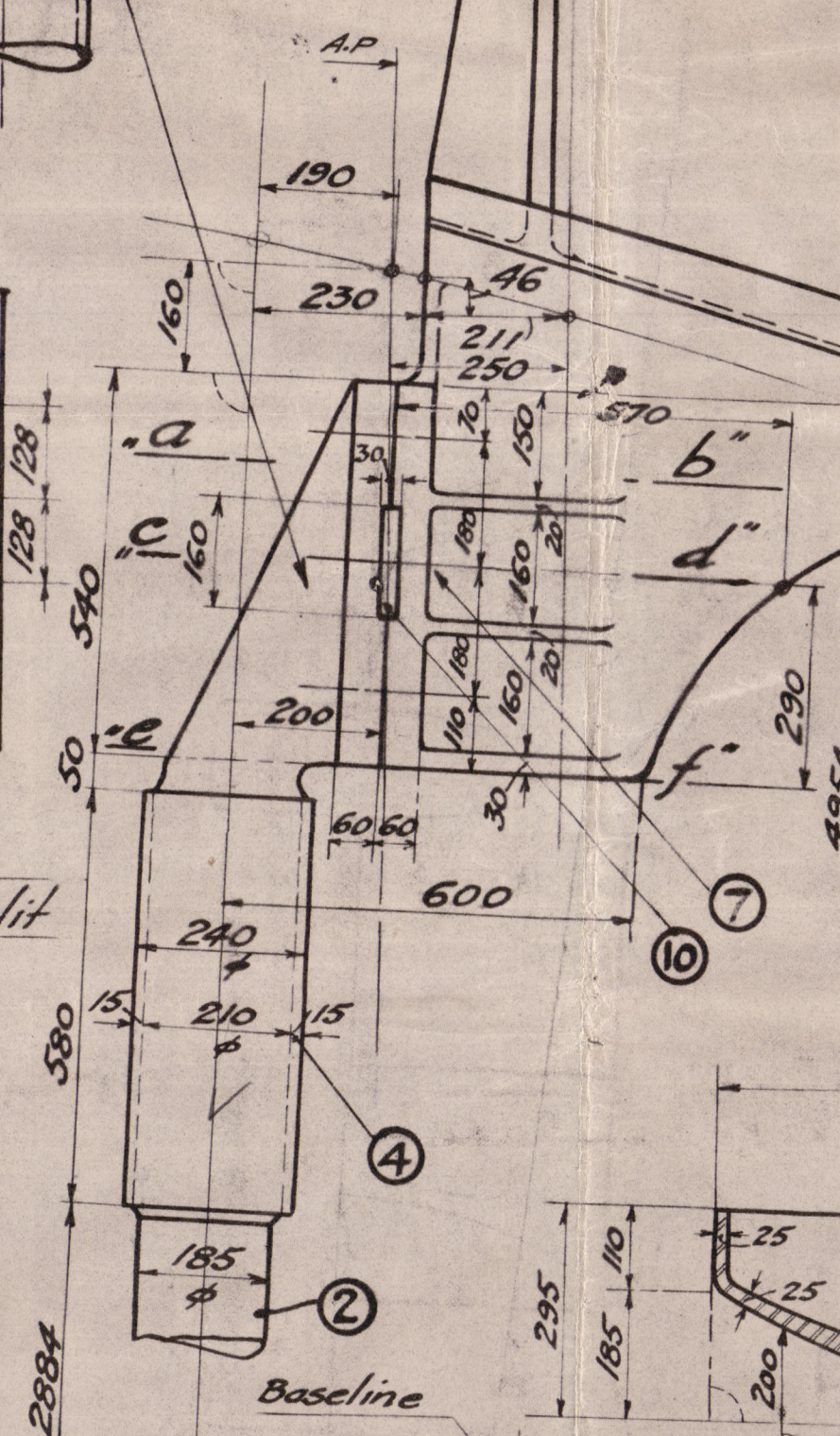
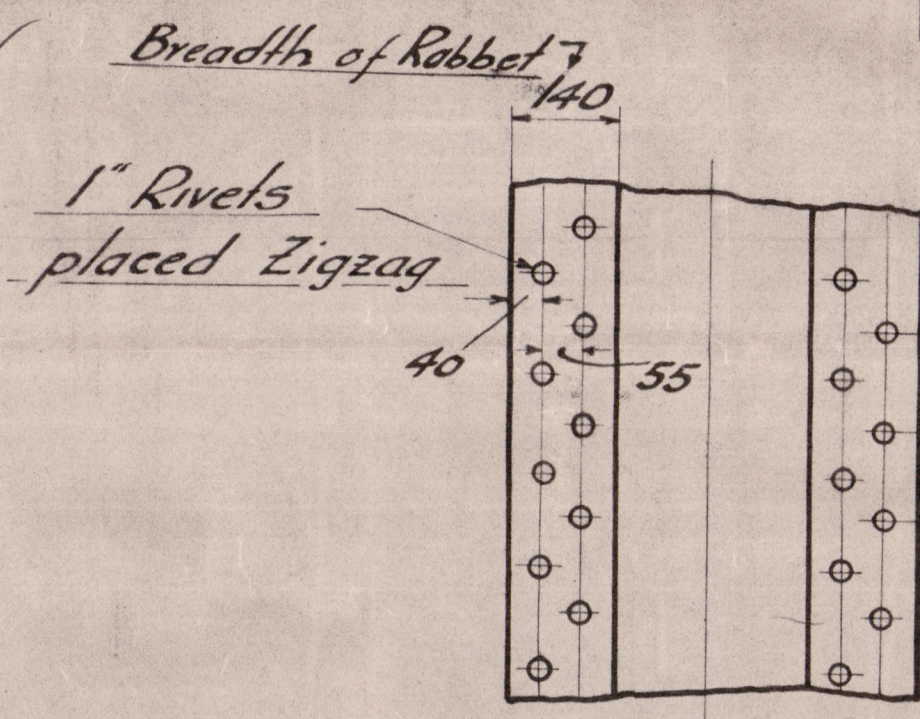
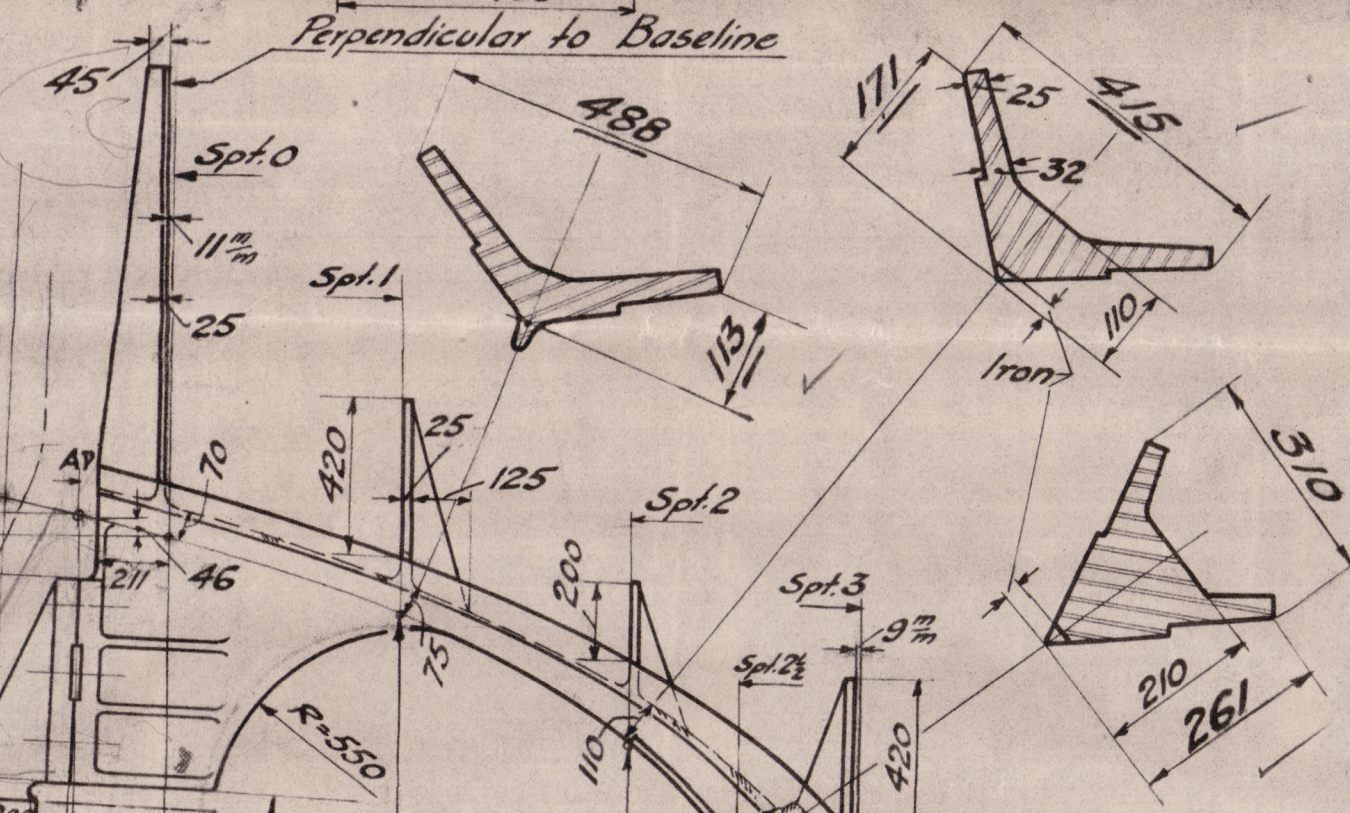
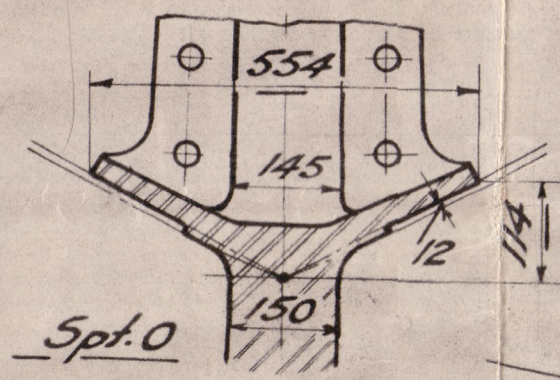
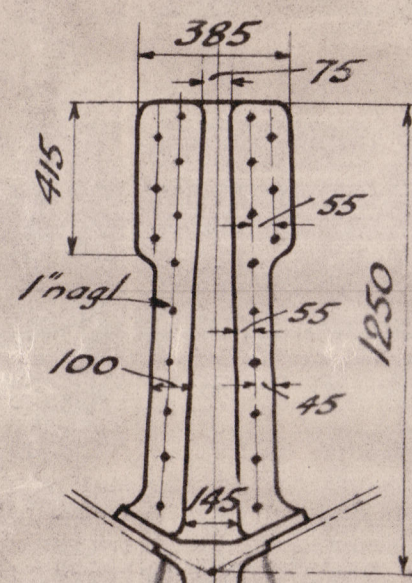
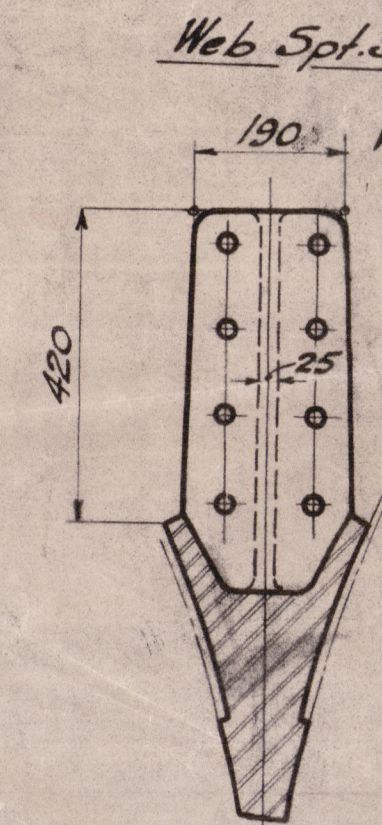
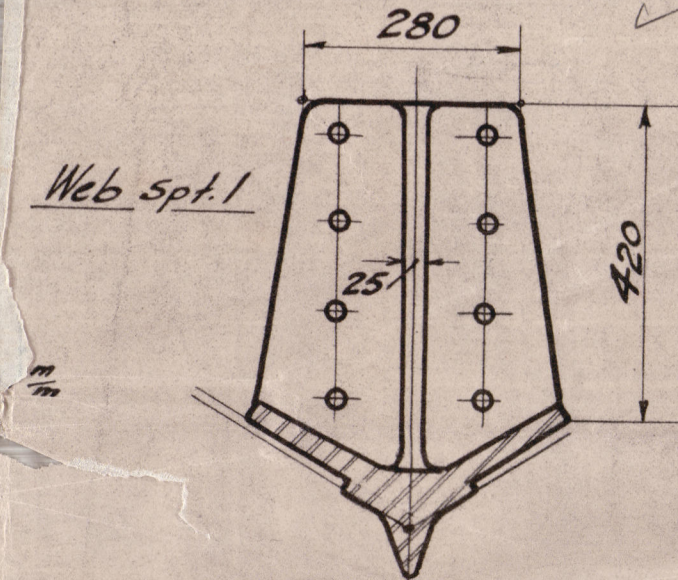
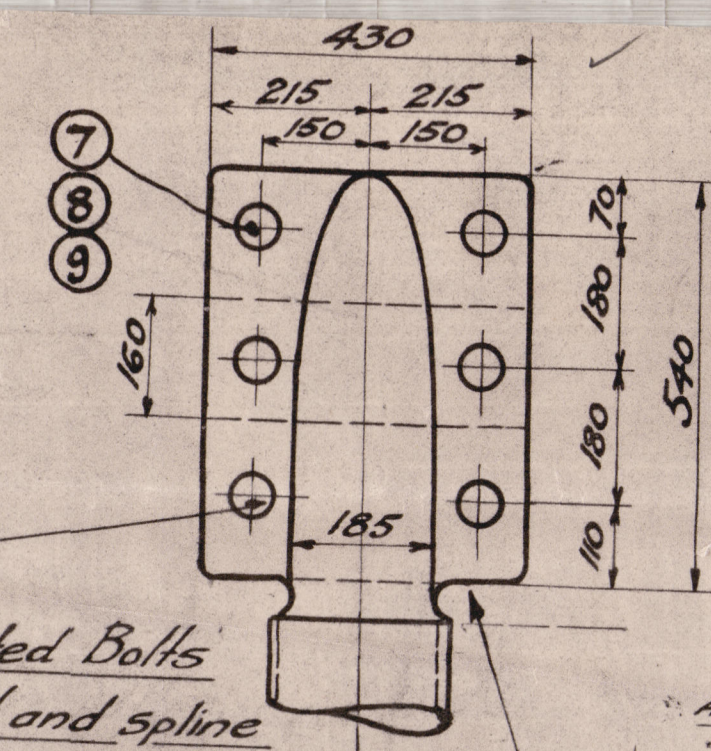
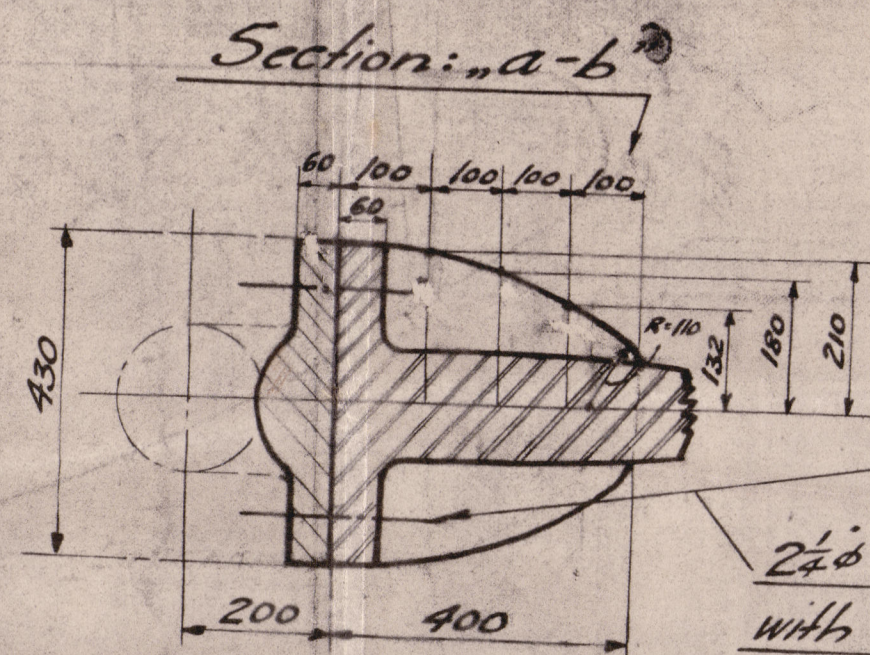
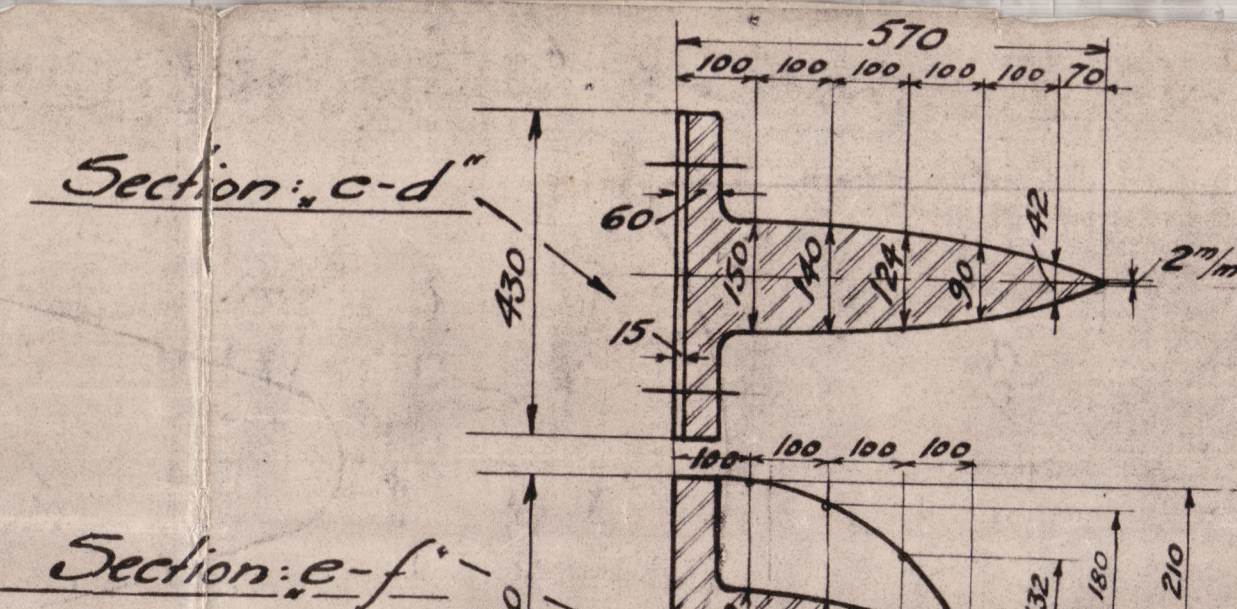


Øvre Rorstamme uts. på Skisse  
5k. 1-401



Materials:  
Cast Steel, with  
Lloyds Reg Certificate

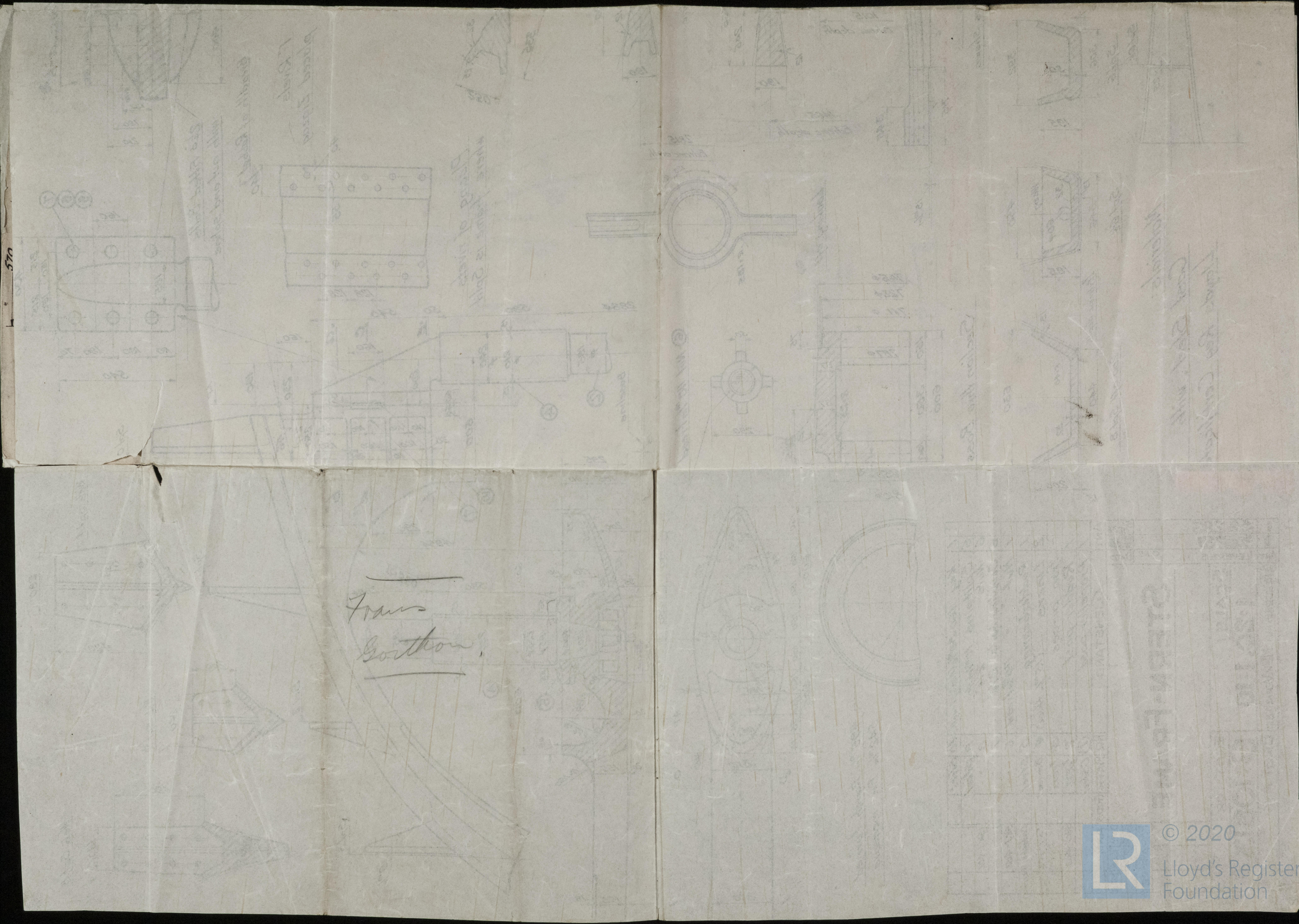
1	Key 160 <sup>mm</sup> 30 <sup>mm</sup> (430 <sup>mm</sup> Length)	10	Steel		
6	Split pins 10 <sup>mm</sup> $\phi$	9	Steel		
6	Nuts 2 <sup>1/4</sup>	8			SK.I-402
6	Coupling bolts 2 <sup>1/4</sup>	7			
1	Nut 110 <sup>mm</sup> thread	6			SK.I-402
1	Rudder bearing	5	Steel		Deutsche Werft
2	Liners (15 <sup>mm</sup> thick)	4	Bronze		SK.I-402
-	Iron pieces	3	Iron		
1	Rudder post	2	Forged steel		SK.I-402
1	Propeller post	①	C.Steel		
ANT	GJENSTAND	NR	MATR	QDTS	QNM

[illegible]

008720 - 008727 - 0098



570



Franc  
Gorton



© 2020  
Lloyd's Register  
Foundation