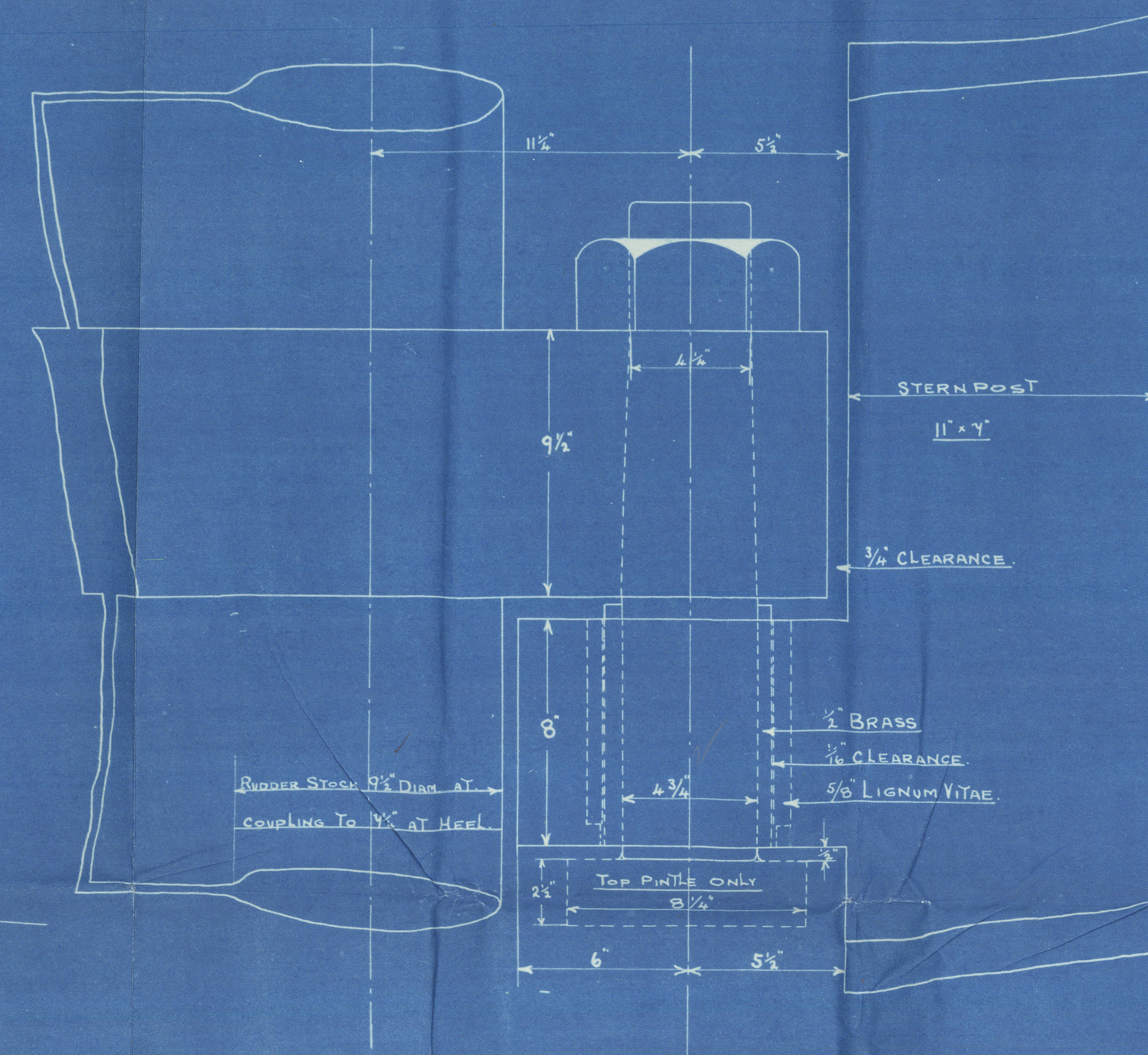
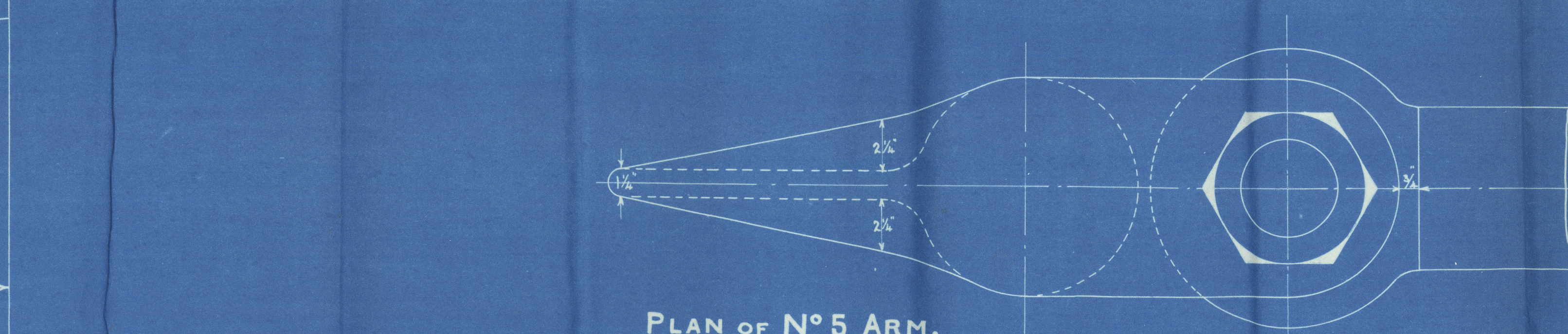
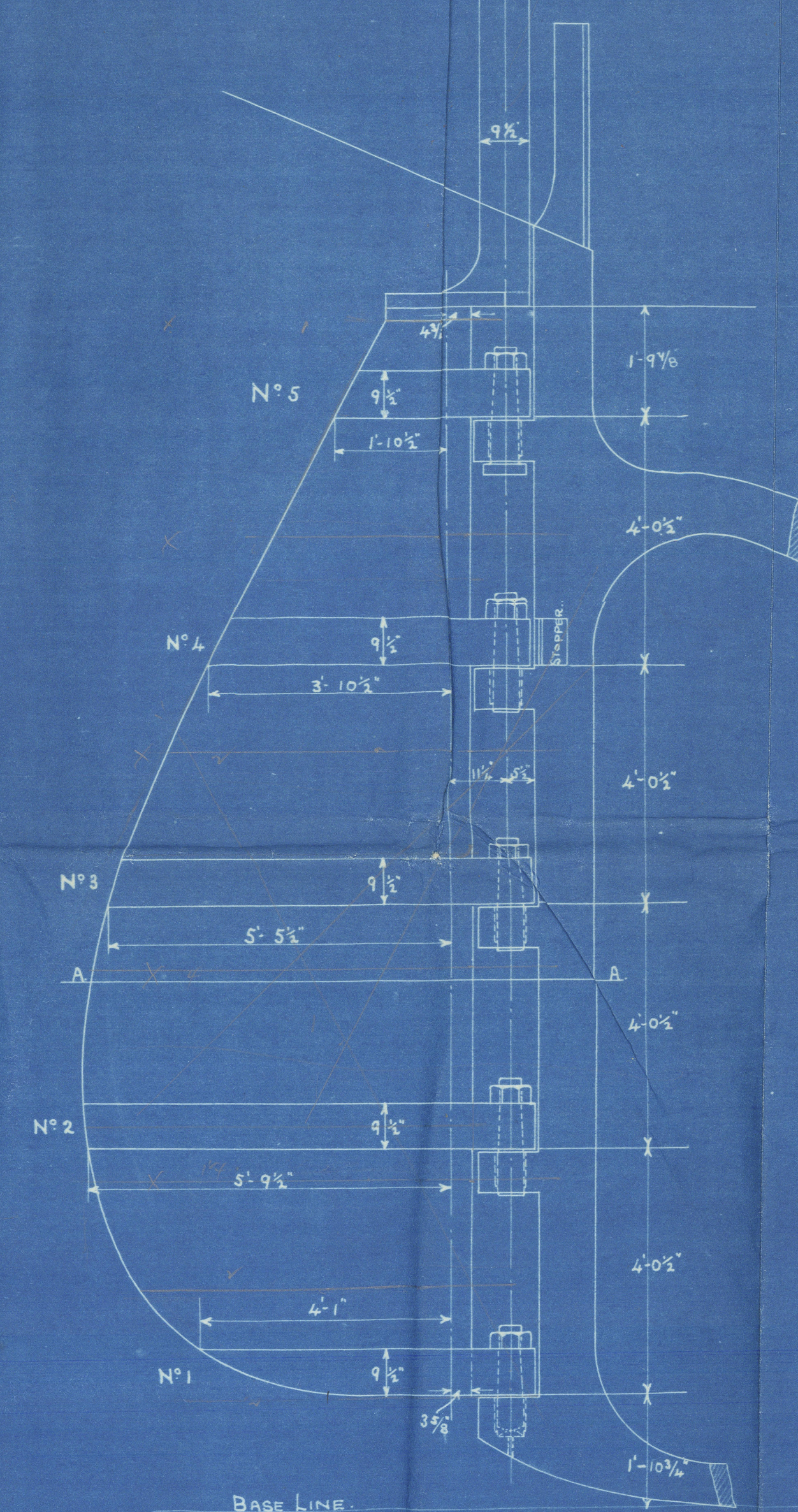


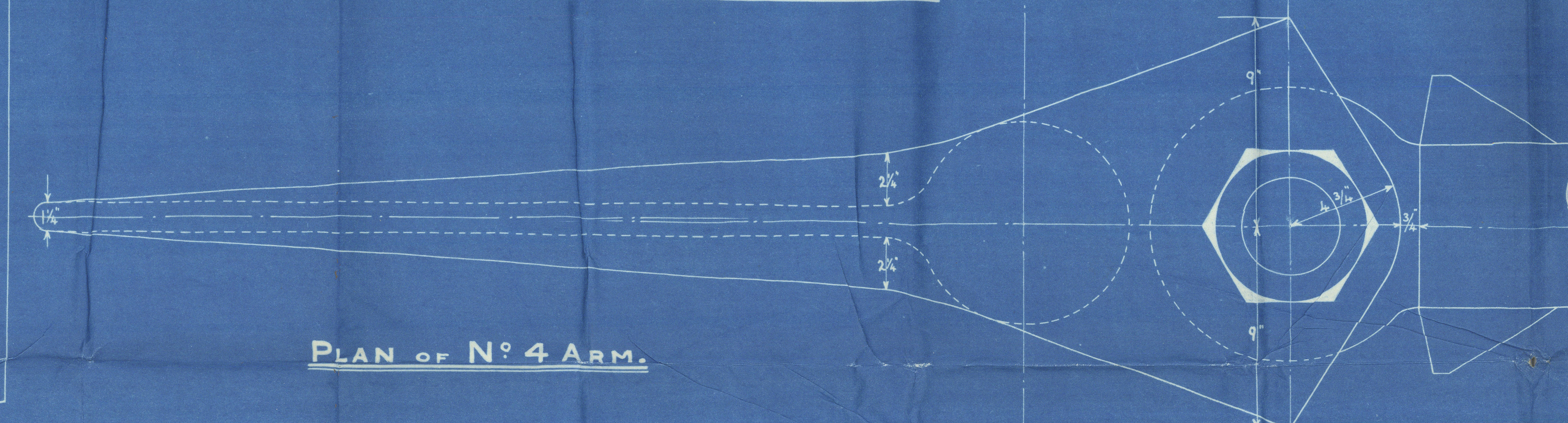
ELEVATION OF BOTTOM PINTLE.



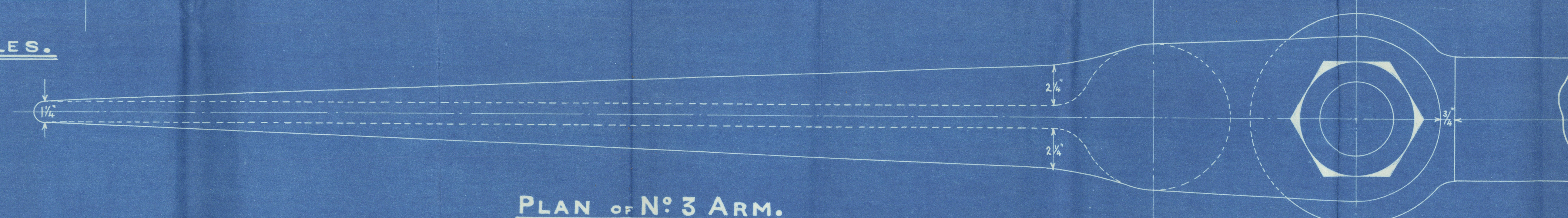
ELEVATION OF PINTLES.



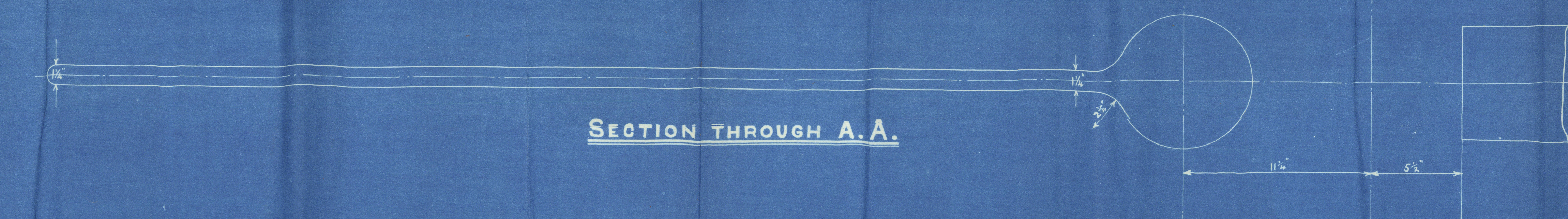
PLAN OF N°5 ARM.



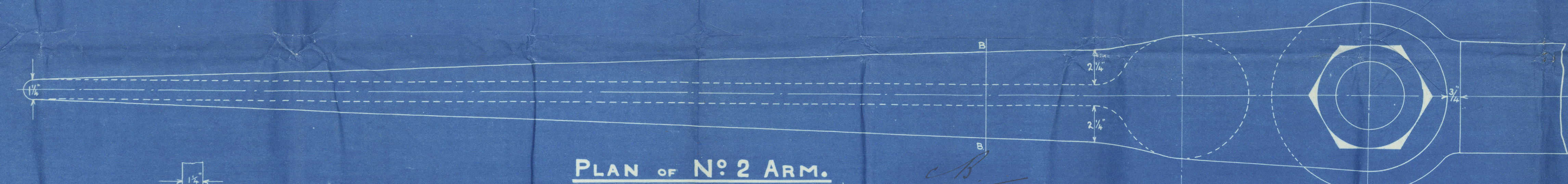
PLAN OF N°4 ARM.



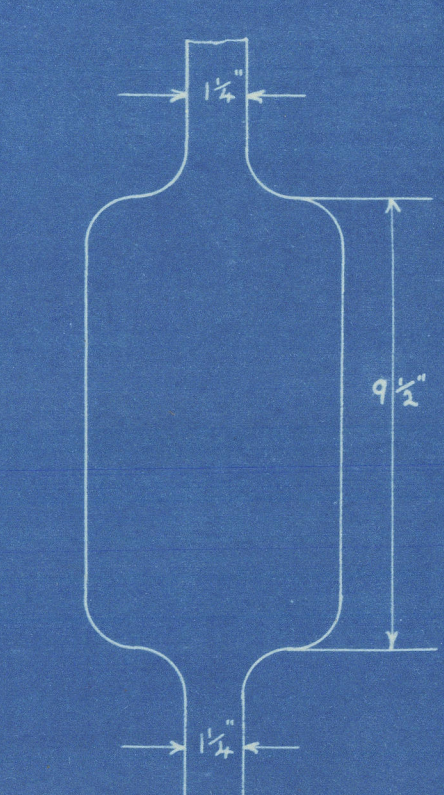
PLAN OF N°3 ARM.



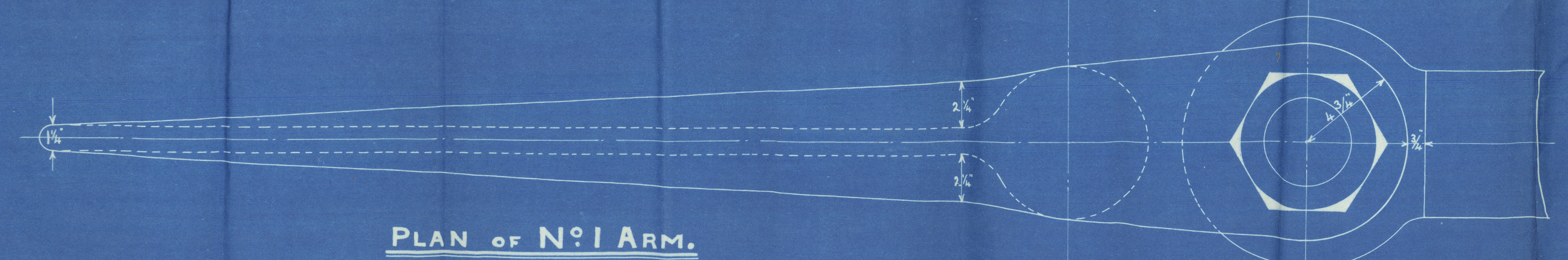
SECTION THROUGH A.A.



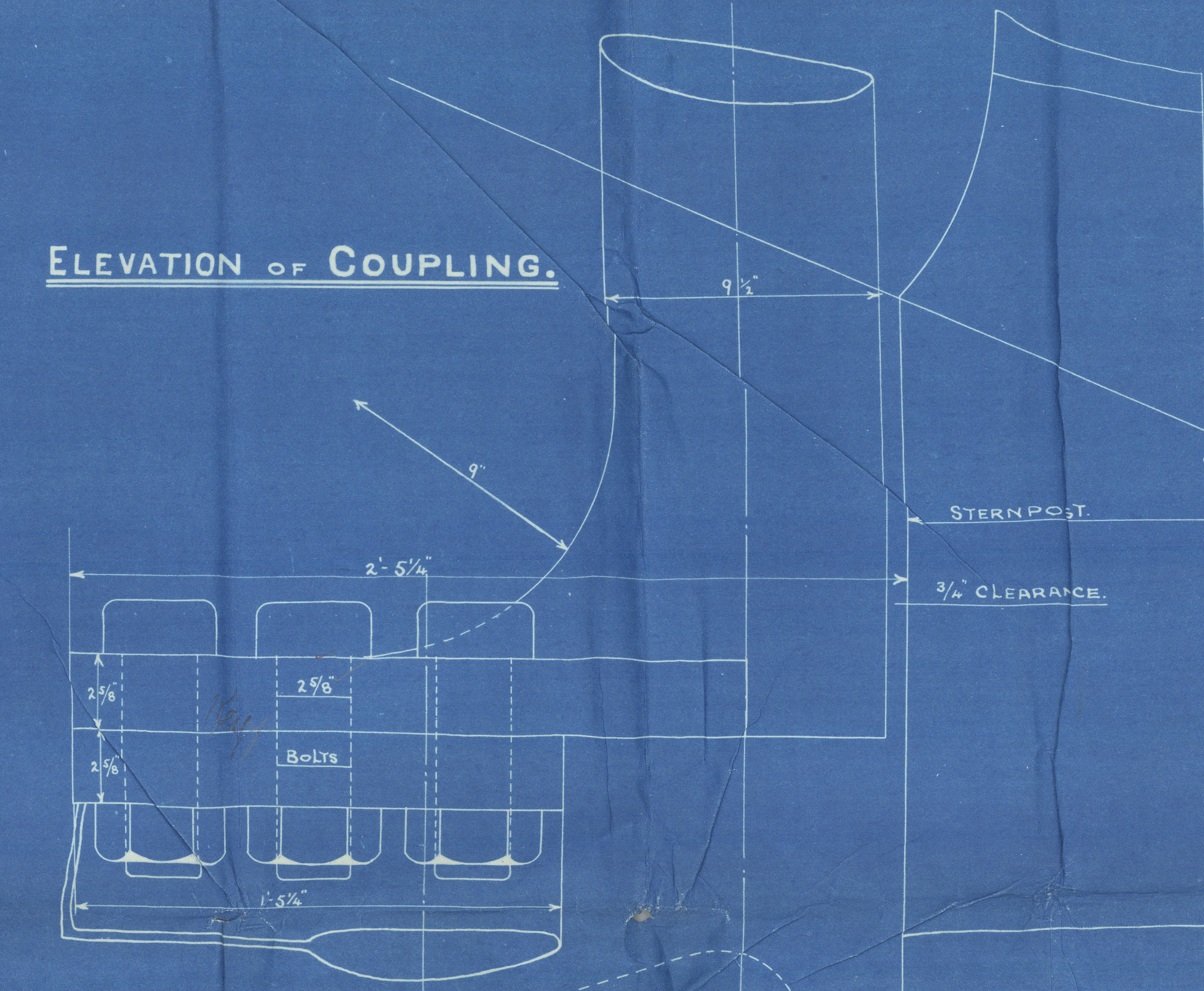
PLAN OF N°2 ARM.



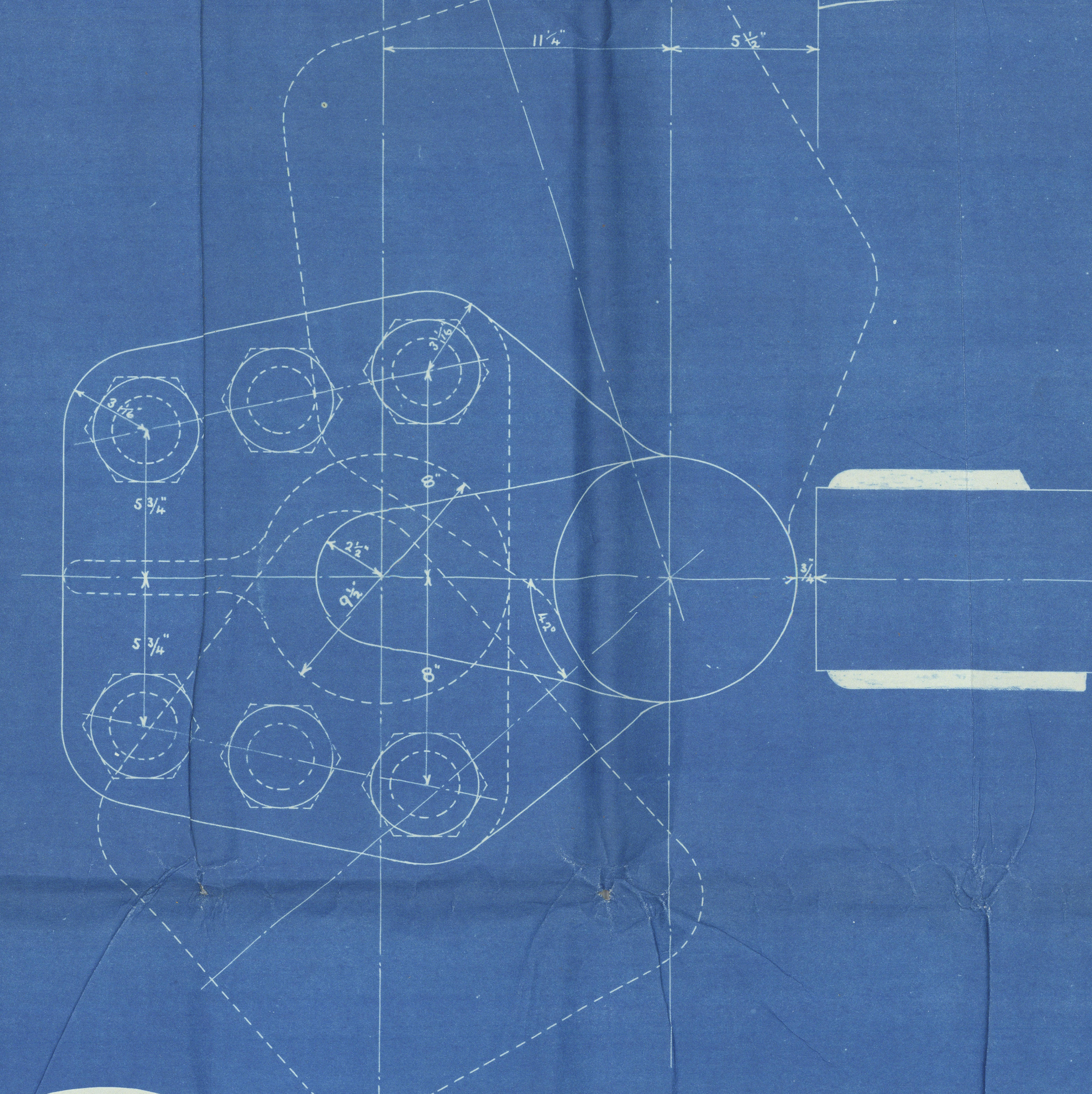
SECTION THROUGH B.B.



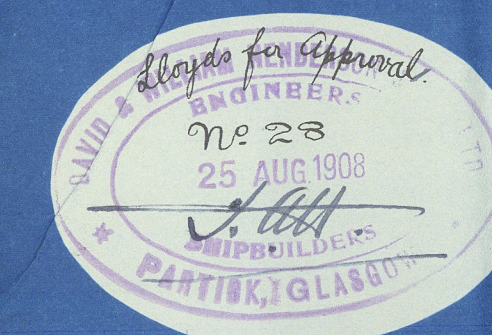
PLAN OF N°1 ARM.



ELEVATION OF COUPLING.



PLAN OF COUPLING.



S.S. N° 465.  
RUDDER PLAN.

SCALE 1/2" = 1 FOOT.

DETAILS 3/8" = 1 FOOT.

RUDDER BELOW COUPLING TO BE OF CAST STEEL.

28 8 08



Rudder

Henderson 465

George Sedon

ex  
s/s "Beothic"

Glasgow Report

Nº 24422.



008711 - 008719 - 0152



© 2021

Lloyd's Register  
Foundation