

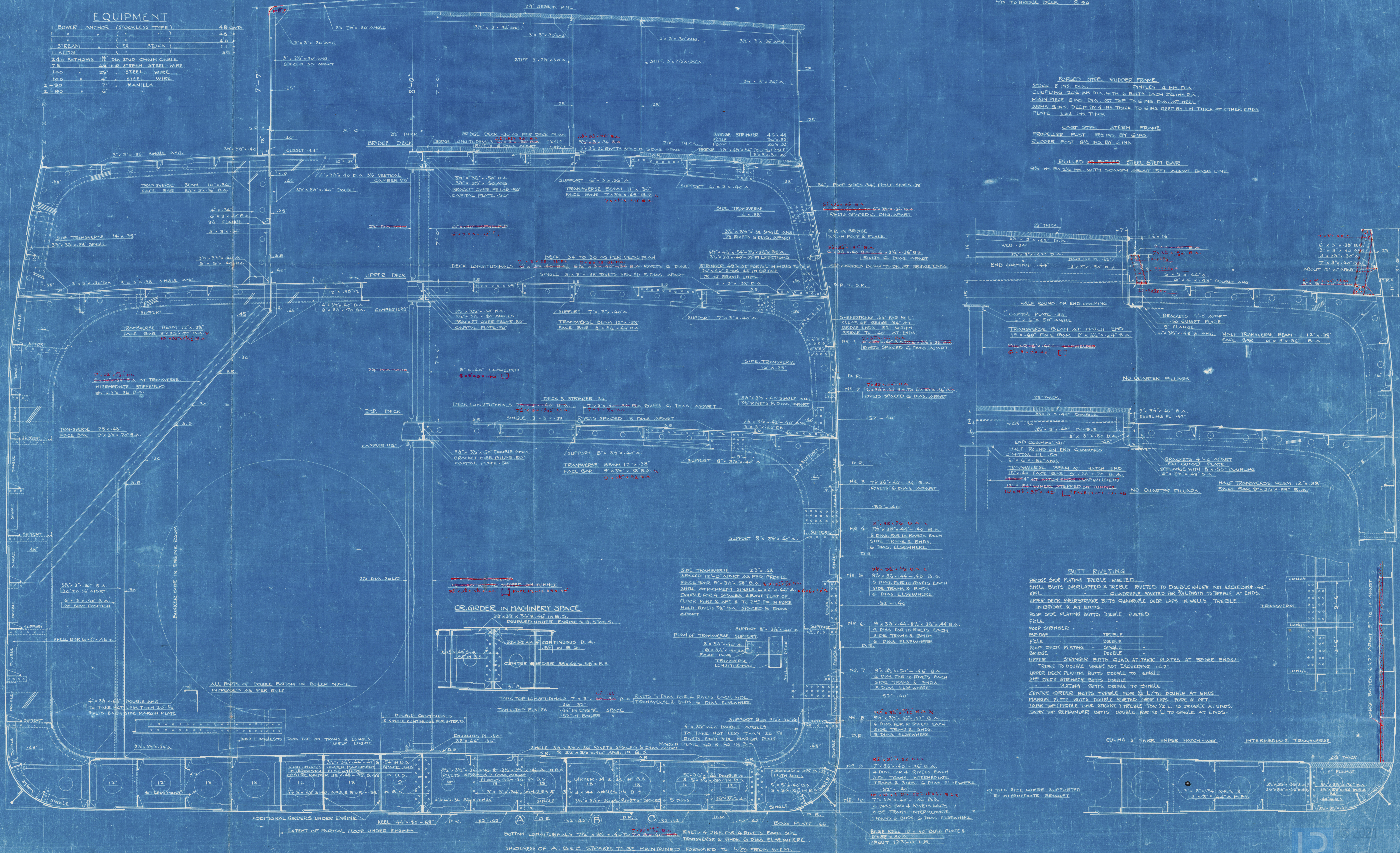
# Nº 1057 MIDSHIP SECTION SCALE 1/2 IN TO ONE FT.

## EQUIPMENT NUMBER

(B+D) x L	(43.75 + 27.25) x 30.5 = 2165.50
POOP	34 x 18.75 x 7.00 = 58.45
BRIDGE	34 x 52.00 x 7.00 = 430.50
FORECASTLE	34 x 32.31 x 7.25 = 175.11
CASING AND ENGINEERS' CABIN	1/2 x 50.00 x 8.00 = 200.00
OFFICERS' CABIN	1/2 x 22.00 x 7.21 = 79.31
EQUIPMENT NUMBER	22638.60

## EQUIPMENT

1 POWER ANCHOR (STOCKLESS TYPE)	48 CMTS.
1 " " " " " "	48 "
1 " " " " " "	40 "
1 " " " " " "	11 "
1 " " " " " "	8 1/2 "
2 40. PATHWAYS 18" DIA. STUP. CHAIN CABLE	
7.5 " " " " " " " " " " " "	4 1/2 " 40. STEEL WIRE
100 " " " " " " " " " " " "	2 1/2 " 20. STEEL WIRE
100 " " " " " " " " " " " "	4 " 7. MANILLA
2 = 90 " " " " " " " " " " " "	2 = 90 " " " " " " " " " " " "



## PRINCIPAL DIMENSIONS

LENGTH	RET. P.P.	30.5' - 0"
BREADTH	MID.	43' - 9"
DEPTH	MID.	7' - 3"

## RULES NUMERALS

BREADTH	43.75	
DEPTH	27.25	1ST NUMBER
LENGTH	305.00	
	21655.00	2ND NUMBER
1/2 TO UPPER DECK	11.20	
1/2 TO BRIDGE DECK	8.90	

## FORGED STEEL RUDDER FRAME

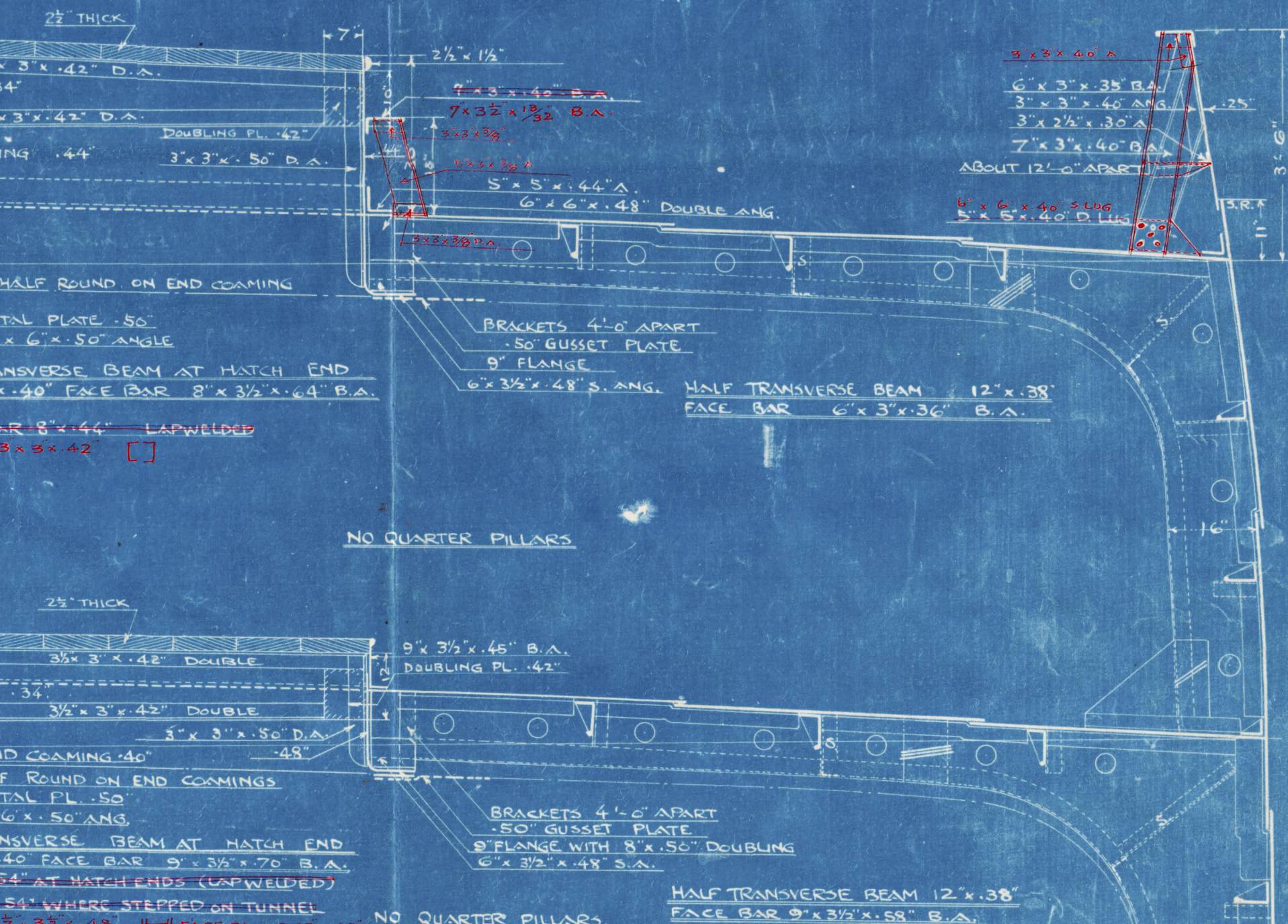
STOCK 8 INS. DIA. RIVETS 4 INS. DIA.  
CAPPING 2 1/2 INS. DIA. WITH 6 BOLTS EACH 2 1/2 INS. DIA.  
MAIN PIER 8 INS. DIA. AT TOP TO 6 INS. DIA. AT HEEL  
ARMS 8 INS. DEEP BY 4 INS. THICK TO 6 INS. DEEP BY 1 IN. THICK AT OTHER ENDS  
PLATE 1.02 INS. THICK

## CAST STEEL STERN FRAME

PROPELLER POST 9 1/2 INS. BY 6 INS.  
RUDDER POST 8 1/2 INS. BY 6 INS.

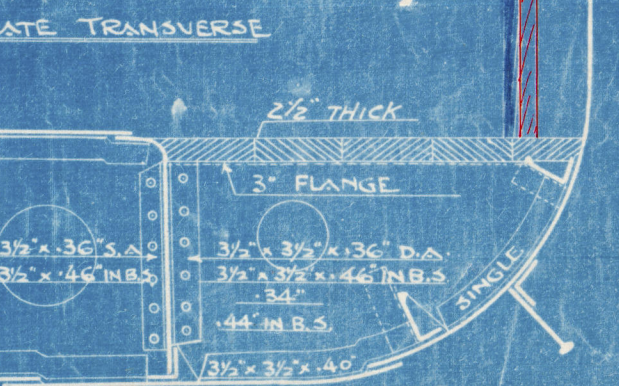
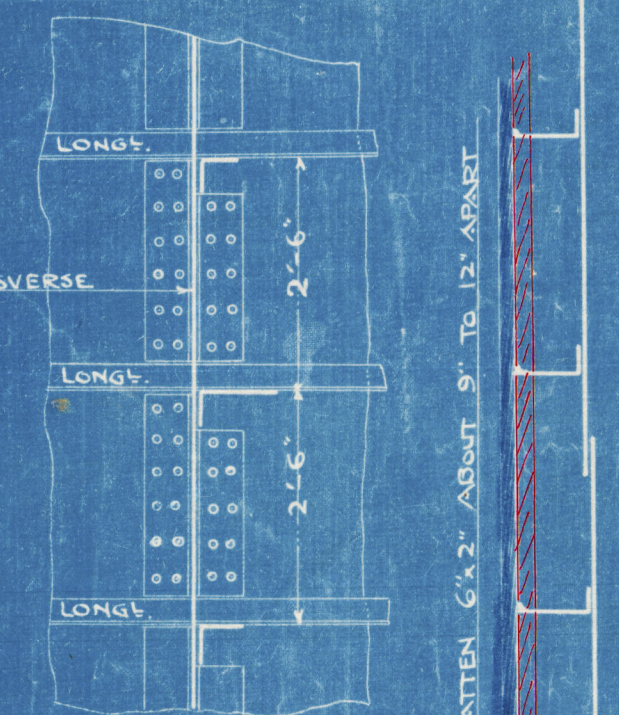
## ROLLED OR FORGED STEEL STEM BAR

9 1/2 INS. BY 3 1/2 INS. WITH SCARF ABOUT 1 SET ABOVE BASE LINE



## BUTT RIVETING

BRIDGE SIDE PLATING TREBLE BUTTED.  
SHULL BUTTS OVERLAPPED & TREBLE BUTTED TO DOUBLE WHERE NOT EXCEEDING 42".  
KEEL - QUADREBLE BUTTED FOR 35' LENGTH TO TREBLE AT ENDS.  
UPPER DECK SHEERSTRAKE BUTTS QUADREBLE OVER LAP IN WELLS, TREBLE IN BRIDGE & AT ENDS.  
POOP SIDE PLATING BUTTS DOUBLE RIVETED.  
POOP STRAKE - TREBLE.  
BRIDGE - TREBLE.  
FLE - DOUBLE.  
POOP DECK PLATING - SINGLE.  
BRIDGE - DOUBLE.  
UPPER DECK STRONGER BUTTS QUADREBLE AT THICK PLATES AT BRIDGE ENDS.  
UPPER DECK STRONGER BUTTS DOUBLE TO SINGLE.  
TREBLE TO DOUBLE WHERE NOT EXCEEDING 42".  
UPPER DECK PLATING BUTTS DOUBLE TO SINGLE.  
CENTRE GIRDER BUTTS TREBLE FOR 1/2 L. TO DOUBLE AT ENDS.  
MARGIN PLATE BUTTS DOUBLE RIVETED OVER LAP FOR 2 FEET.  
TANK TOP (MIDDLE LINE STRAKE) TREBLE FOR 1/2 L. TO DOUBLE AT ENDS.  
TANK TOP REMAINDER BUTTS DOUBLE FOR 1/2 L. TO SINGLE AT ENDS.





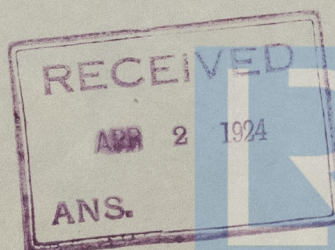
hmdm

NO 1057

MIDSHIP SECTION

Is Koan Mam

KOBE REPORT No. 4355



© 2021

Lloyd's Register  
Foundation

008691-008697-0053