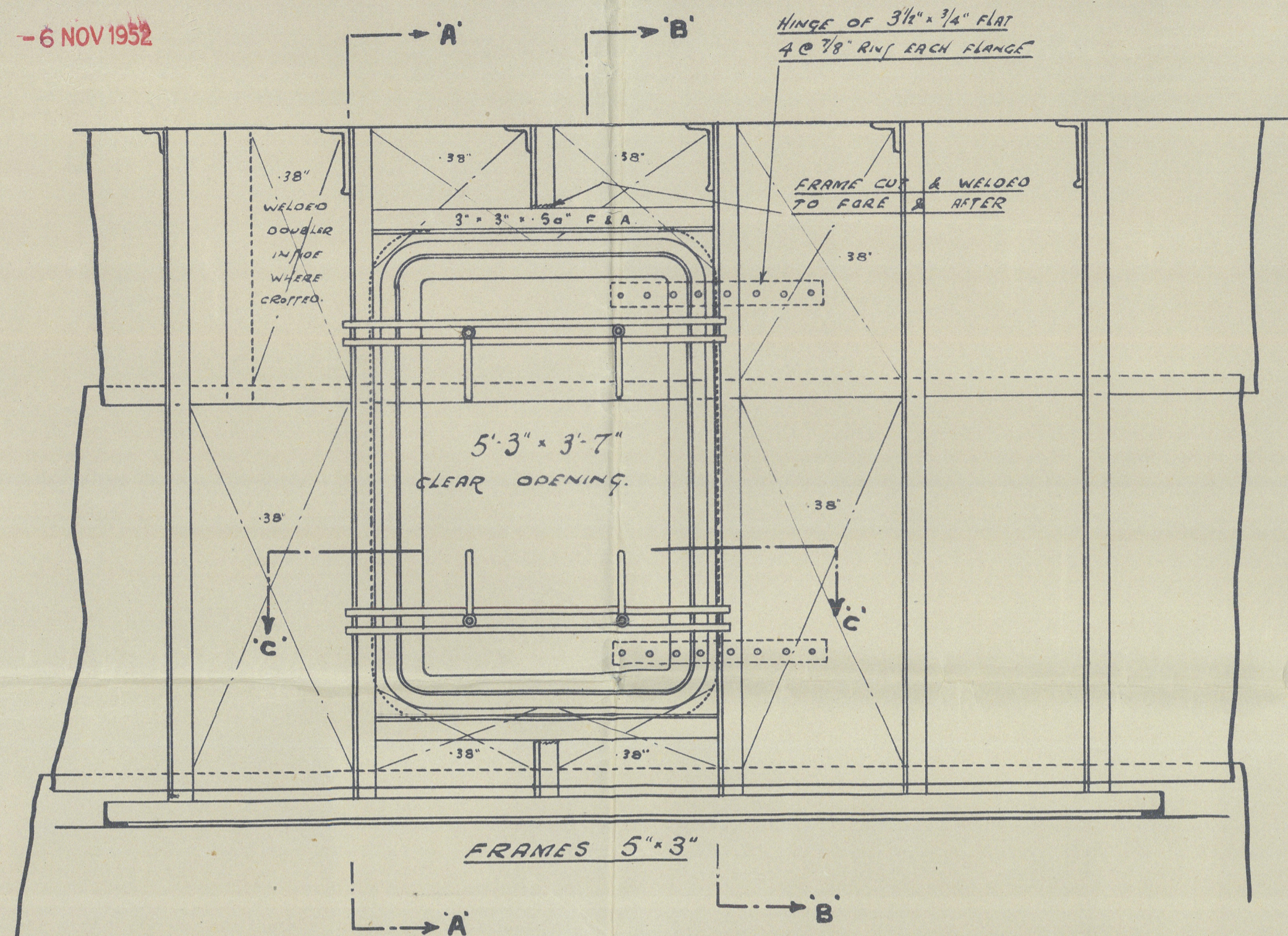
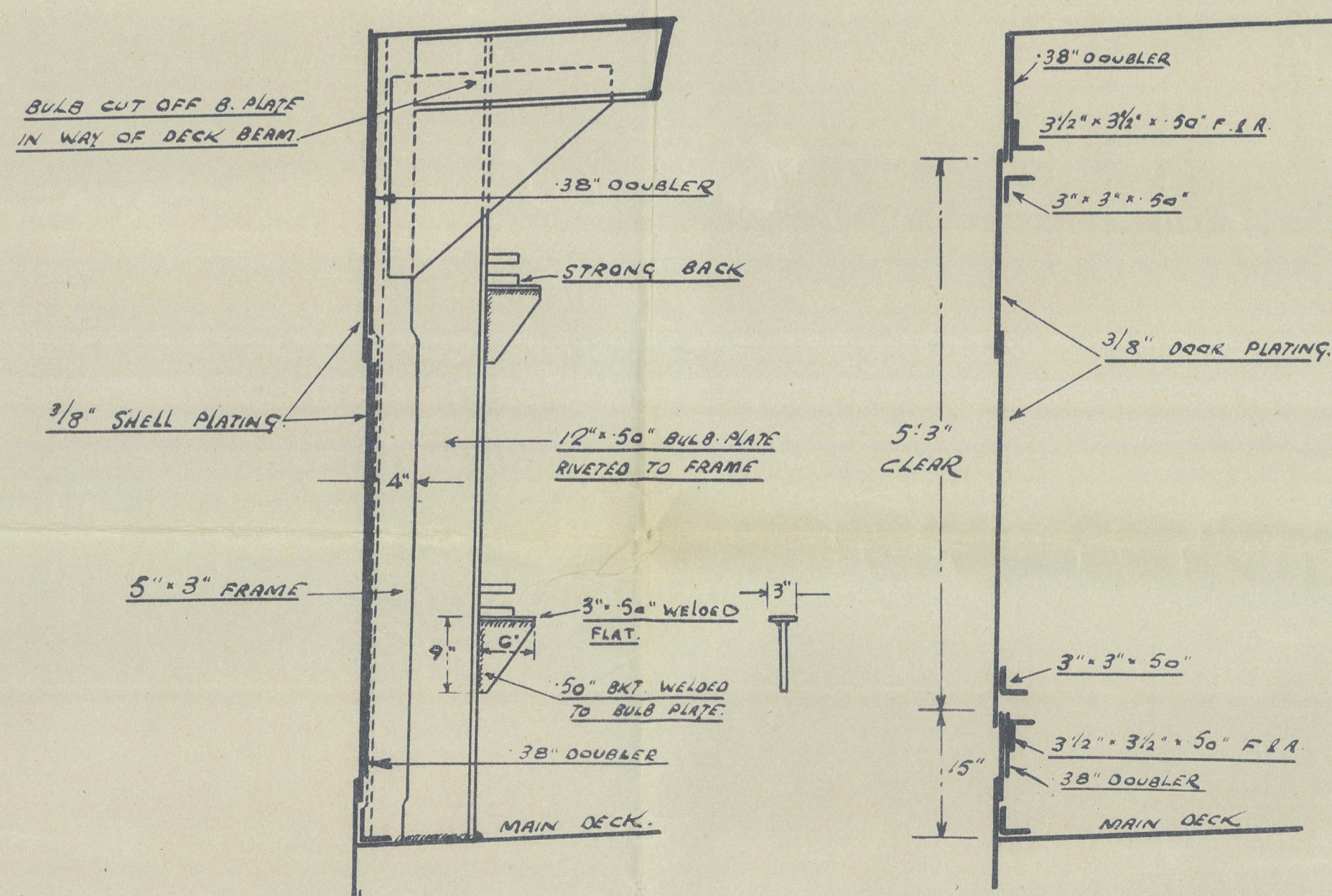


-6 NOV 1952



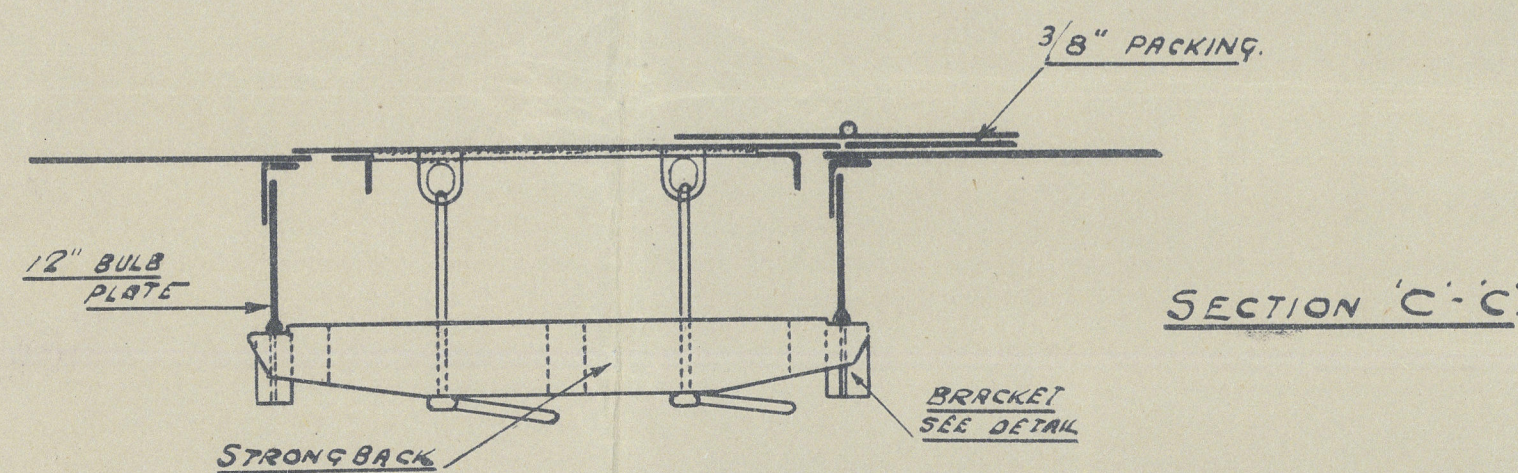
ELEVATION - LOOKING OUTBOARD

FRAME SPACING 24"  
SHELL PLATING 3/8"

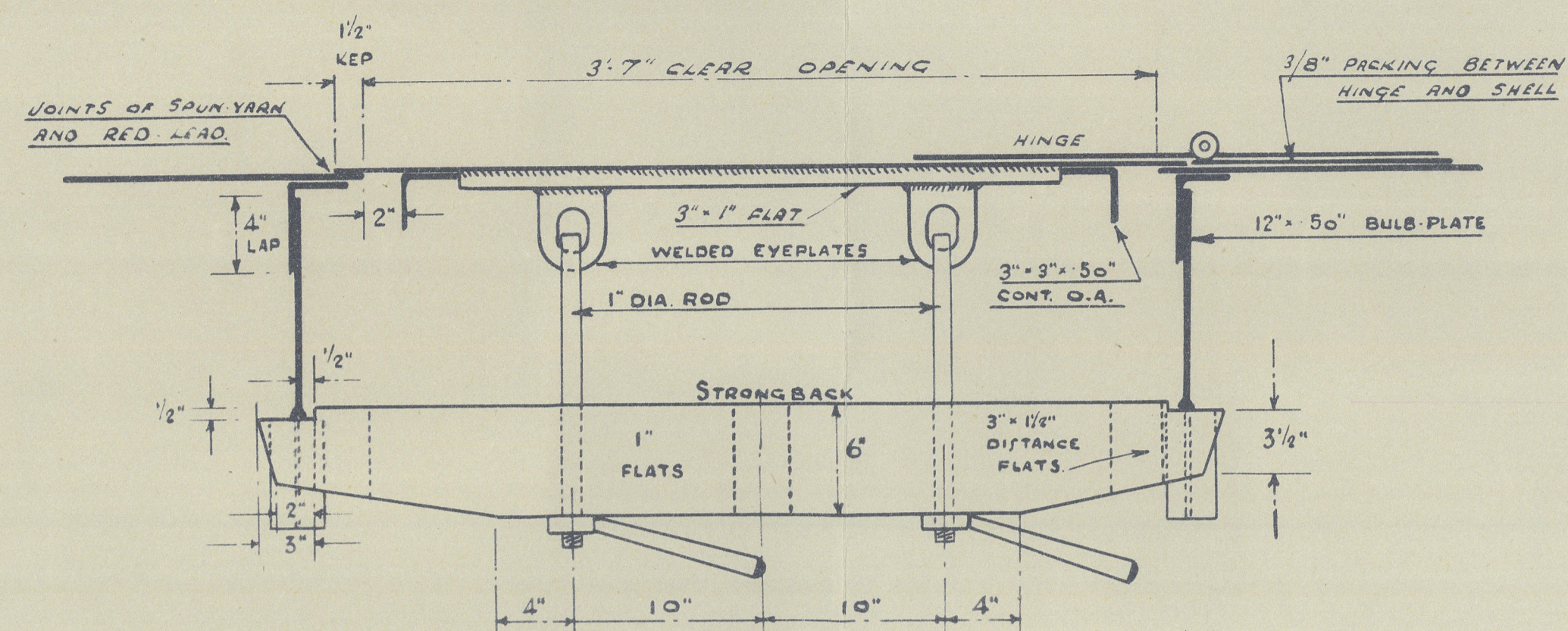


SECTION A-A

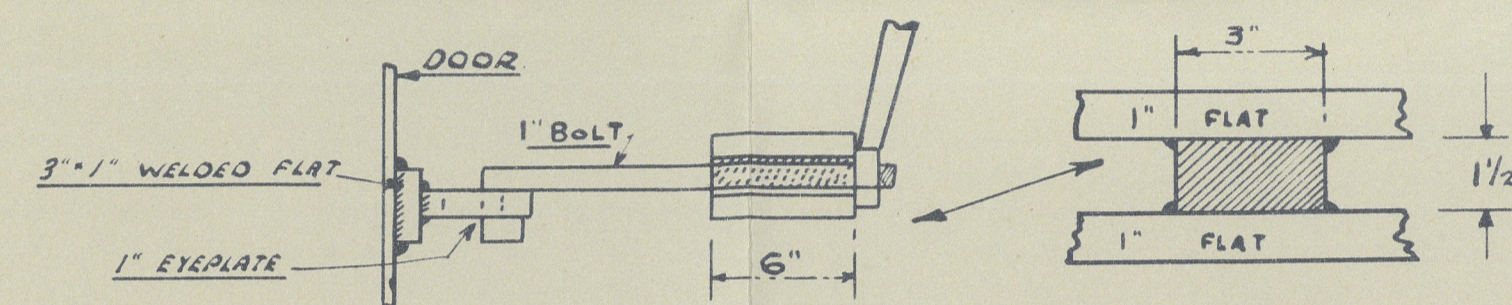
SECTION B-B



SECTION C-C

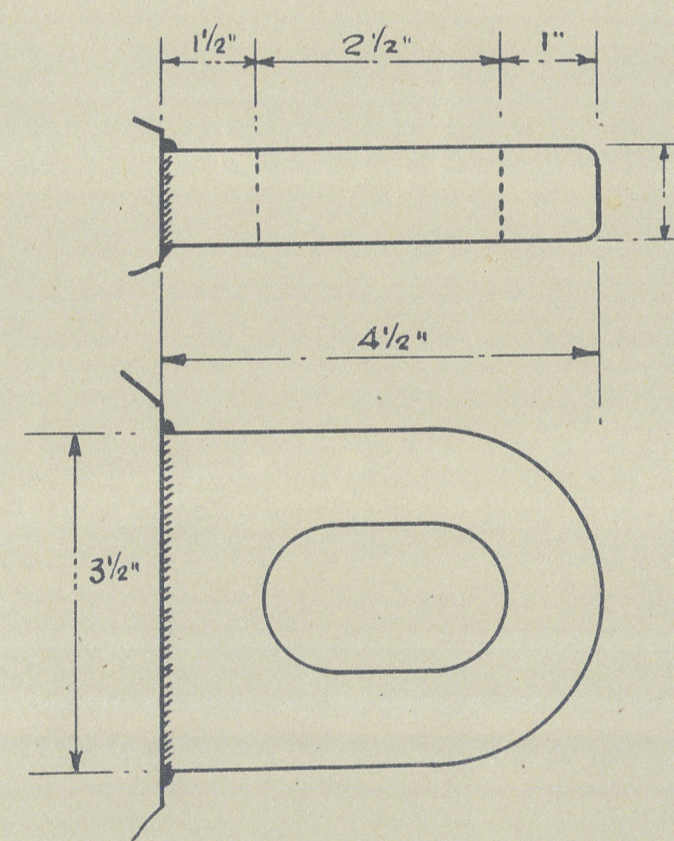


STRONGBACK & SECURING ARRGT.

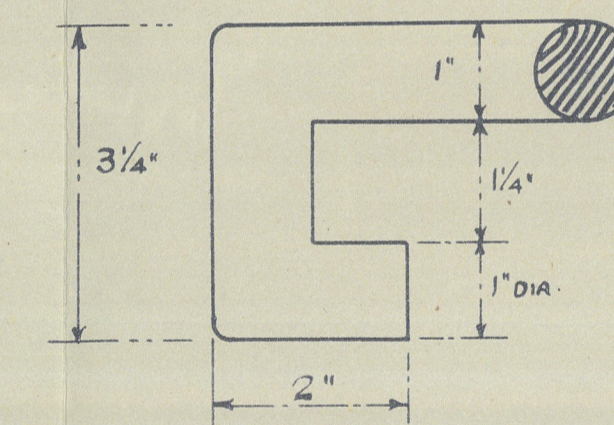


SECTION X-X

DISTANCE PIECE IN STRONGBACK



EYEPLATE  
1/2 FULL SIZE



HOOK ON END OF BOLT  
1/2 FULL SIZE

S.S. AFRICAN QUEEN  
CARGO DOOR  
IN  
AFTER ACCOMMODATION



© 2020

Lloyd's Register Foundation

008628-008633-0084

AFRICAN QUEEN

CARGO DOORS IN AFTER ACCOM<sup>N</sup>.

WITH NWE RPT. 109981.



© 2020

Lloyd's Register  
Foundation

008628-008633-0084