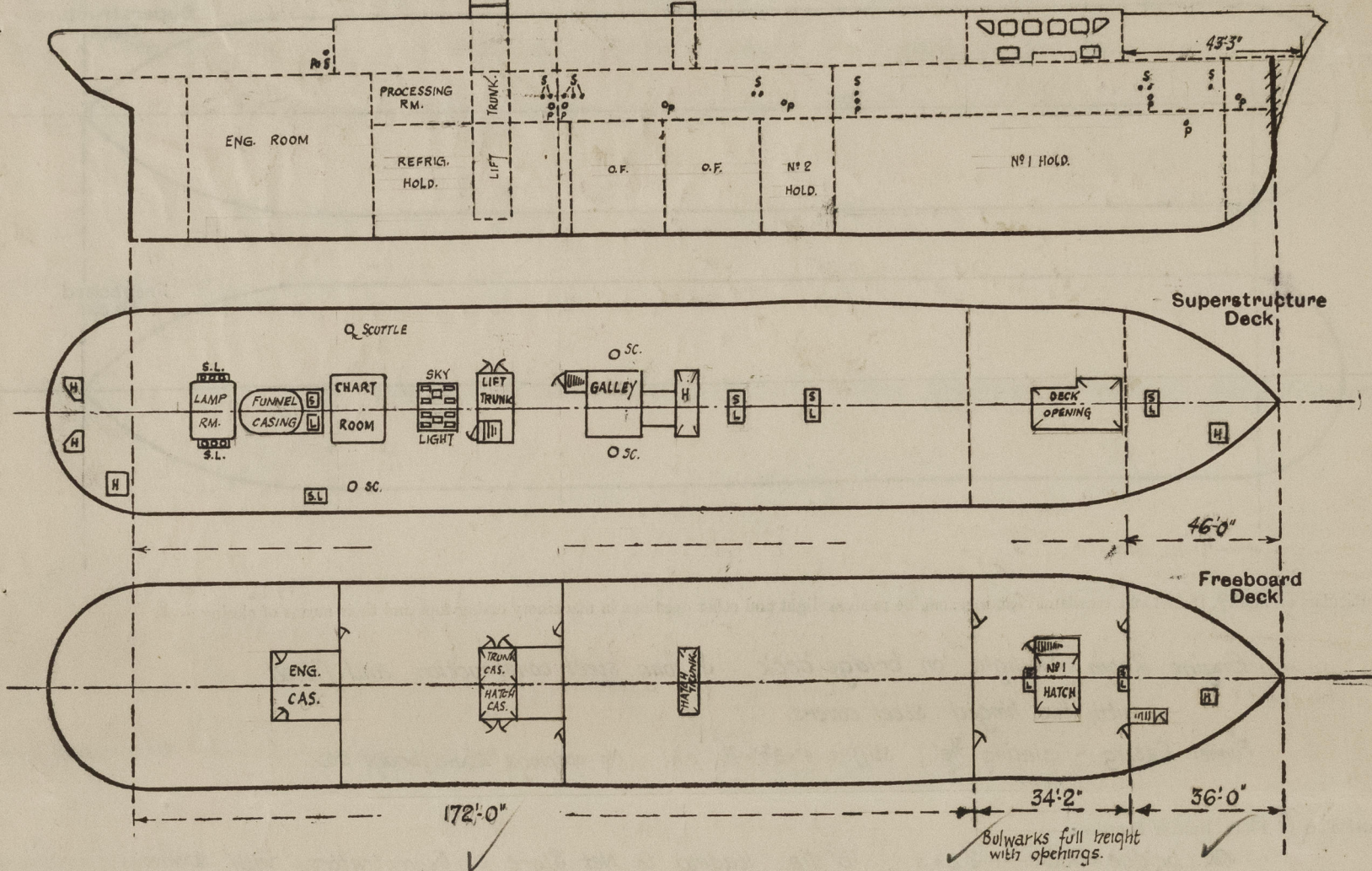


Lloyd's Register of Shipping.
SURVEYS FOR FREEBOARD.
(CONDITIONS OF ASSIGNMENT.)

Eng. Rpt No. 24229.

Ship's Name "AFRICAN QUEEN" (ex "BADGER") Port of Survey Grimsby
Official Number 148556 Surveyor's Signature J MacLeod
Nationality and Port of Registry British ~ Gibraltar Date of Survey 18th + 21st July 1950

Disposition and dimensions of superstructures, trunks, deckhouses and machinery casings to be inserted in the diagrams and tabular statement :—



Particulars of Superstructures, Trunks, Casings, Deckhouses.

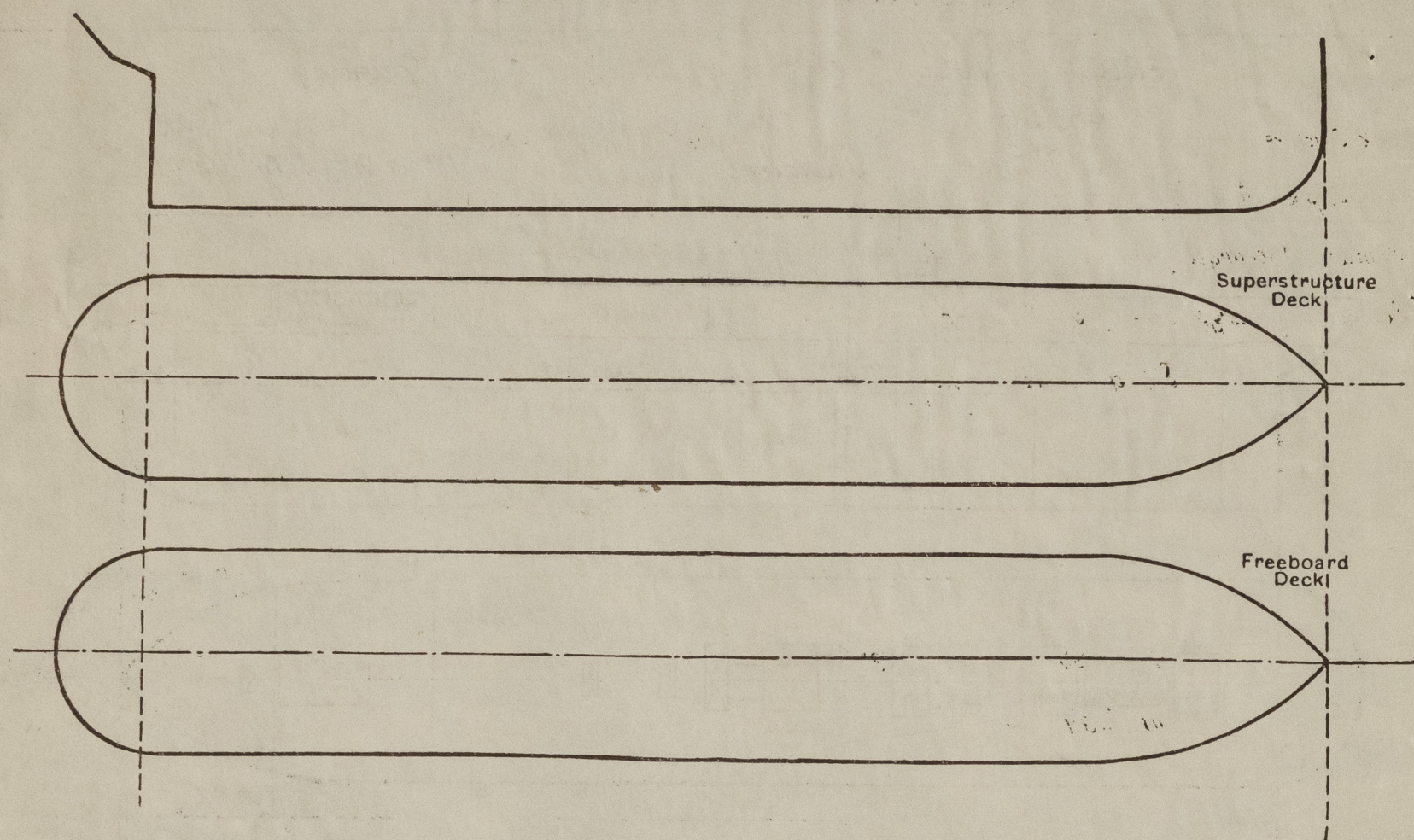
	Coaming	Plating	Stiffeners	Spacing	End Attachments of Stiffeners	Size of Openings	Height of Sills	Height of Casings
Poop Bulkhead	✓							
POOP & BRIDGE Raised Quarter Deck Bulkhead ...	9" ✓	6/20"	6" x 3" x 40' OA	25" ✓	Bracket at top ✓	63" x 28" ✓	17" ✓	8'0" ✓
Bridge, After Bulkhead	✓							
Bridge, Forward Bulkhead	✓							
Forecastle Bulkhead	10"	6/20"	5" x 3" x 40' OA	24" ✓	None ✓	57" x 24" ✓	24" ✓	7'0" ✓
Trunk, Aft	✓							
Trunk, Forward	✓							
Exposed Machinery Casings on Freeboard or Raised Quarter Decks ...	✓							
Exposed Machinery Casings on Superstructure Decks	✓							
Machinery Casings within Superstructures not fitted with Class I Closing Appliances	✓							
Deckhouses on Flush Deck Ships ...	✓							

Particulars of Closing Appliances (state if capable of being manipulated from both sides).

Poop Bulkhead	✓
POOP & BRIDGE Raised Quarter Deck Bulkhead ...	Steel Doors W.T. fitted with toggles spaced 12" apart. Operated both sides ✓
Bridge, After Bulkhead	✓
Bridge, Forward Bulkhead	✓
Forecastle Bulkhead	Panelled Teak Doors ~ Operated both sides. ✓
Exposed Machinery Casings on Freeboard or Raised Quarter Decks ...	✓
Exposed Machinery Casings on Superstructure Decks	✓
Machinery Casings within Superstructures not fitted with Class I Closing Appliances	✓
Deckhouses on Flush Deck Ships ...	✓

PARTICULARS OF PROTECTION TO OPENINGS, ETC.

The following diagrams should be used to indicate the positions of cargo and coaling hatchways, gangway, cargo and coaling ports, ventilators, companionways, etc., which would affect the seaworthiness of the ship:—



Particulars of fiddle, funnel and ventilator coamings, engine room skylight and other openings in machinery casing tops and their means of closing:—

Engine Room Skylight on bridge deck. Strong steel construction and fitted with two hinged steel covers.

Funnel Casing - plating $\frac{3}{16}$ " ; stiffers $4 \times 3\frac{1}{2} \times \frac{1}{16}$ o.a. No openings above bridge deck.

Particulars of Flush Bunker Scuttles:—

On bridge deck - 2 p.s., 15" dia. leading to Net Store & Concentrators, with screw joint and chain attachment.

Particulars of Companionways:—

Main Companionway on bridge dk. Plating $\frac{3}{16}$ " stiffers 2×1 " half round. Teakwood door opening both sides $4'6\frac{1}{2} \times 2'1" \times 15"$ sill
Forward on Main Dk (Well) Plating $\frac{3}{16}$ " stiffers $2\frac{1}{2} \times 2\frac{1}{2} \times \frac{1}{4}$ ". Teakwood Door opening both sides $4'6\frac{1}{2} \times 2'7\frac{1}{2} \times 25"$ sill
Portable Companionway fitted on top of Refrig. Hatch on Bridge Deck. See under special features.
Companionway on Main Deck in Foc'sle (ss) Plating $\frac{3}{16}$ " stiffers $3 \times 2\frac{1}{2} \times \frac{1}{16}$ o.a. Wood door $5'6" \times 2'8" \times 9"$ coam. opening both sides.

Particulars of Ventilators in exposed positions on freeboard and superstructure decks:—

Freeboard Dk. (Ford. Well)	6	Cowl Vents	15" dia. x 36" coaming x 38" leading to No 1 Hold & Tween Dk. Accom.
" " " "	3	" "	" " " " " " " "
Foc'sle.	3	Goose-necks	5" " x 12" " x 30" " " Accom.
" "	1	Mushroom	5" " x 12" " x 30" " " "
" "	1	" "	6" " x 12" " x 30" " " "
Bridge Deck	8	Mushroom	5" " x 6" " x 30" " " Aft Store Spaces.
" "	2	" "	5" " x 9" " x 30" " " Net Store
" "	7	" "	5" " x 12" " x 30" " " Accom.
" "	1	" "	8" " x 12" " x 32" " " Canning Machy.
" "	4	" "	9" " x 12" " x 32" " " Accom.
" "	1	" "	12" " x 12" " x 34" " " Net Store
" "	2	" "	12" " x 12" " x 34" " " No 2 Hold.
" "	2	Cowl Vents	5" " x 36" " x 30" " " Boiler Rm.
" "	1	" "	5" " x 36" " x 30" " " Net Store.

Mechanical ventilation fitted throughout and in accordance with approved drawings.

Trunks and casings of steel and of substantial construction and securely fastened at decks.

All vents are fitted with canvas covers. Cowl Vents fitted with wood plugs.

All mushroom vents capable of being closed w.t.

Particulars of Air Pipes in exposed positions on freeboard, raised quarter, or superstructure decks:—

Foc'sle Deck - 1 @ 3" dia x 36" coaming leading to F.P. Tank.
2 @ 2" " x 24" " " " No 1 D.B.

Freeboard Dk (Ford. Well) 2 @ 2" " x 36" " " " No 2 D.B.

Bridge Deck - 2 @ 2" " x 24" " " " No 3 D.B.
2 @ 2" " x 24" " " " No 4 D.B.
1 @ 3" " x 36" " " " Aft Peak.

O.F. Bunker on Bridge Deck - 6 @ 3" dia & 3 @ 4" dia x 18" coaming x 30"

All air pipes are fitted with wood plugs and canvas covers. O.F. pipes fitted with wire gauze and canvas cover.

Particulars of Gangway Cargo and Coaling Ports:—

None

Particulars of Scuppers and Sanitary Discharge Pipes:—

Deck Scuppers from Poop & Bridge Deck discharge overboard thro' open bend between Poop & Bridge Dk & Main Dk.

Deck Scuppers from Main Deck led through ships side and fitted with gunmetal automatic N.R. Valves.

Sanitary Discharges from Bridge Spaces led thro' ships side and fitted with gunmetal automatic N.R. Valves.

Scupper Discharge p.s.f. from Galley fitted with N.R. Valve & extended spindle operating above freeboard deck. with indicator

Sill of lowest discharge above bottom of keel ~ 18'9" ~ dia of discharge 3"

Particulars of Side Scuttles:—

In Orlop 'tween deck 12" dia. scuttles fitted with hinged deadlights permanently fixed (of cast iron)

In Main " " 10" " " " " " " " " " " "

Vertical distance of Sill of lowest Side Scuttle above top of keel

22'0"

Particulars of Guard Rails:—

On foc'sle & bridge decks ~ open rails ~ 45" high ~ 3 rails spaced 13" apart.

On bridge deck around opening over No 1 Hatch ~ open rails 36" high ~ 2 rails spaced 12" apart.

Particulars of Gangways, Lifelines, etc.:—

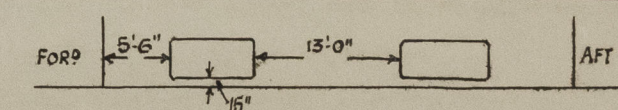
None

Particulars of Freeing Arrangements.

	Length of Bulwark	Height of Bulwark	Size of Freeing Ports	Number each side	Area each side	Rule area each side
After Well ...						
Forward Well ...	34'0"	8'0" / 7'6"	38" x 23"	2	12.17 sq	9.9 sq

State position of each freeing port ... { After Well:—

(F. and A. position and height above deck edge) { Forward Well:—



State whether the freeing ports are fitted with shutters, bars, or rails, and give particulars of such:— Bars and shutters. Bars 12' apart.

Additional area where sheer is less than standard.

PARTICULARS OF PROTECTION TO OPENINGS, ETC.

HATCHWAYS ON FREEBOARD AND SUPERSTRUCTURE DECKS.										
			FREEBOARD DECK			SUPERSTRUCTURE DECK				
Description of Hatchway			Nº 1 HOLD	CHAIN LKR.	CHAIN LKR.	PROVISION ROOM	REFRIG. HOLD	BOILER ROOM	AFT STORE (P)	AFT STORE (S)
Dimensions of Hatchway			7'3" x 9'10"	2'0 1/2" x 2'5"	4'0" x 2'4"	3'3" x 8'6"	6'6" x 6'5"	3'0" x 2'6"	2'11" x 2'11"	2'11" x 2'11"
COAMINGS	Height above Deck ... Thickness } Sides ... } Ends ... Stiffeners ... Brackets, Stays ...		29"	3"	10"	30"	24"	10 1/2"	10"	10"
			35"	3 3/5"	3"	3 3/5"	3 3/5"	25"	3"	3"
			35"	3 3/5"	3"	3 3/5"	3 3/5"	25"	3"	3"
			7" x 3" x 1/8" B.A.	✓	✓	7" x 3" x 3/8" B.A.	7" x 3" x 3/8" B.A.	✓	✓	✓
HATCH BEAMS	Number ... Spacing ... Scantling and Sketch ... 									
			3"	✓	✓	✓	✓	✓	✓	✓
FORE AND AFTERS	Number ... Spacing ... Unsupported Lengths ... Scantling* and Sketch ...		✓	✓	✓	✓	✓	✓	✓	
HATCH COVERS	Material ... Thickness ... How fitted ... Bearing Surface ...		W.P.	W.P.	W.P.	W.P.	W.P.	25" Hinged Steel Cover	W.P.	W.P.
			2 1/2"	2 1/2"	2 1/2"	2 1/2"	2 1/2"		2 1/2"	2 1/2"
			F & A			F & A	F & A	fitted with spring.	2 1/2"	2 1/2"
			2 1/2"	2 1/2"	2 1/2"	2 1/2"	2 1/2"			
Spacing of Cleats		24"	✓	17"	24"	24"	Toggles	24"	24"	
Number of Tarpaulins		2	✓	2	2	2	spaced 19" apart.	2	2	

*Are wood fore and afters steel shod at all bearing surfaces? ✓
 Are battens and wedges efficient and in good condition? Yes
 Are tarpaulins in good condition and in accordance with rule requirements? Yes
 Are lashings provided in accordance with rule requirements? Yes

Particulars of any special features:—

Steel Companionway fitted on Refrig. Hold Hatch on Bridge Dk. Companionway made portable and connected to hatch covers by 5/8" bolts spaced 6" apart. Plating 5/16"; stiffers 2 1/2" x 1/4" flat bar. and fitted with 2 solid wood doors. Size of opening 4'3" x 2'6". Sill of opening 3" above hatch top. *Hatch capable of being battened down.*
 Lift Trunk fitted on bridge deck leading to Refrig. Hold. Openings on bridge deck - 2 hinged steel doors 4'5 1/2" x 2'3 3/4" fitted with toggles operating both sides. Hinged steel coaming 24" high. (As per approved drawing)

Endorsement at first survey and at surveys for renewal of Certificate:—

The fittings and appliances are in accordance with the particulars shown on this form (or as now modified) and are in good condition.



© 2020

Lloyd's Register Foundation