

BYGNING N<sup>o</sup> 1-6.

19-5-17.

**AKSELBÆRER.**

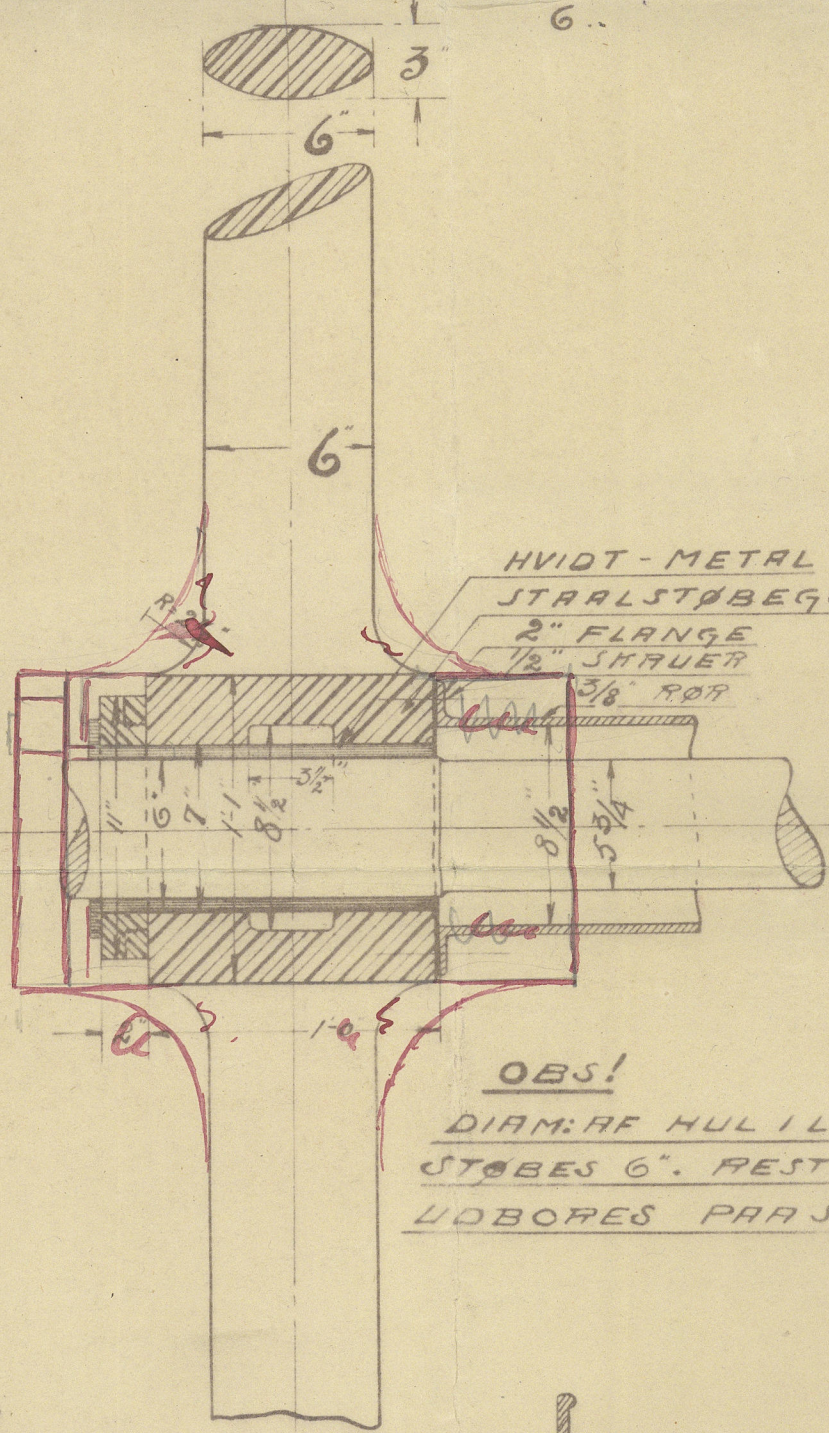
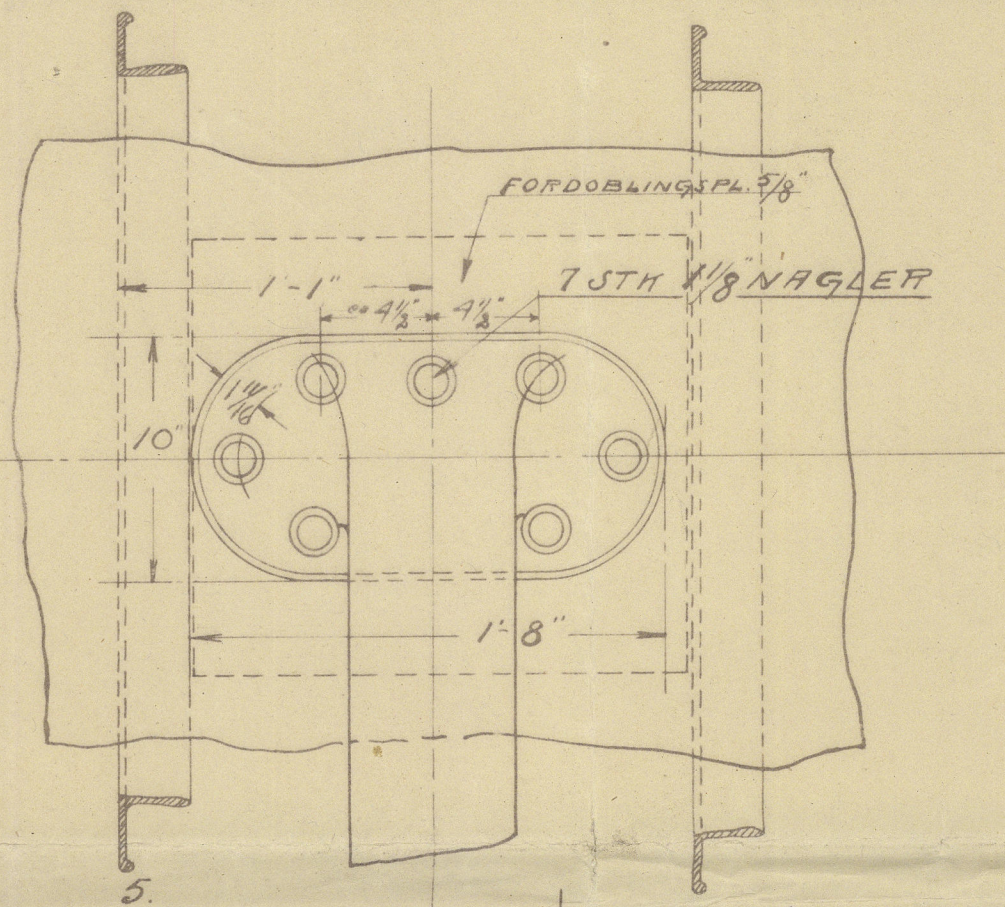
**SKALA  $1\frac{1}{2}'' = 1^{\text{FT.}}$**

MATERIALE

MATERIAL

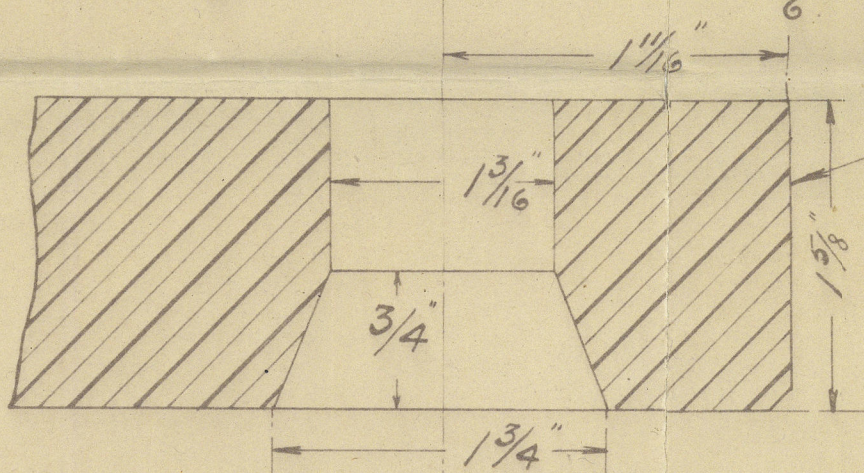
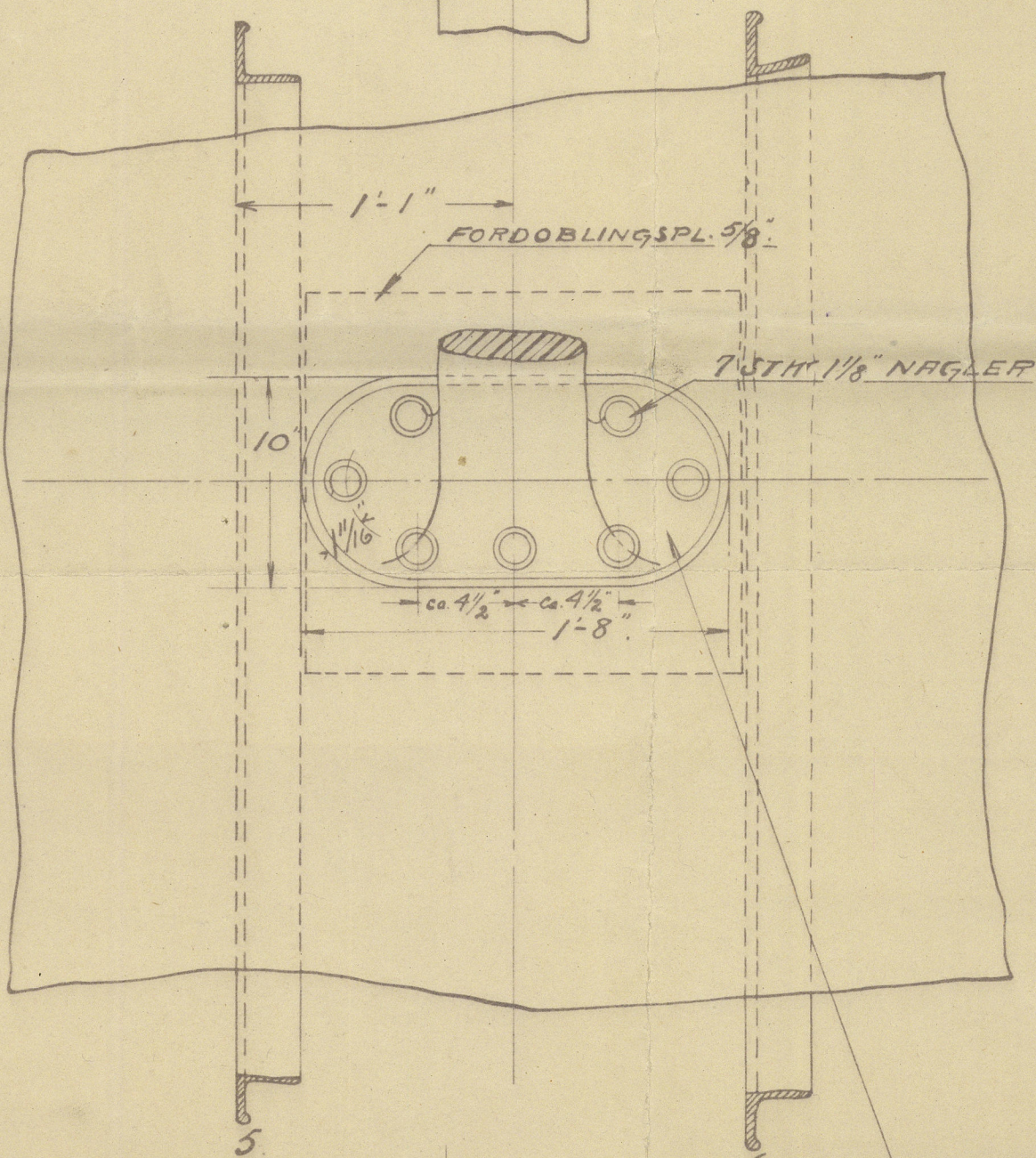
STØBESTAAL.

CAST STEEL



HVIDT - METAL  
STAALSTØBEGODS (CAST STEEL)  
2" FLANGE  
1/2" SHAFT  
38" ROR

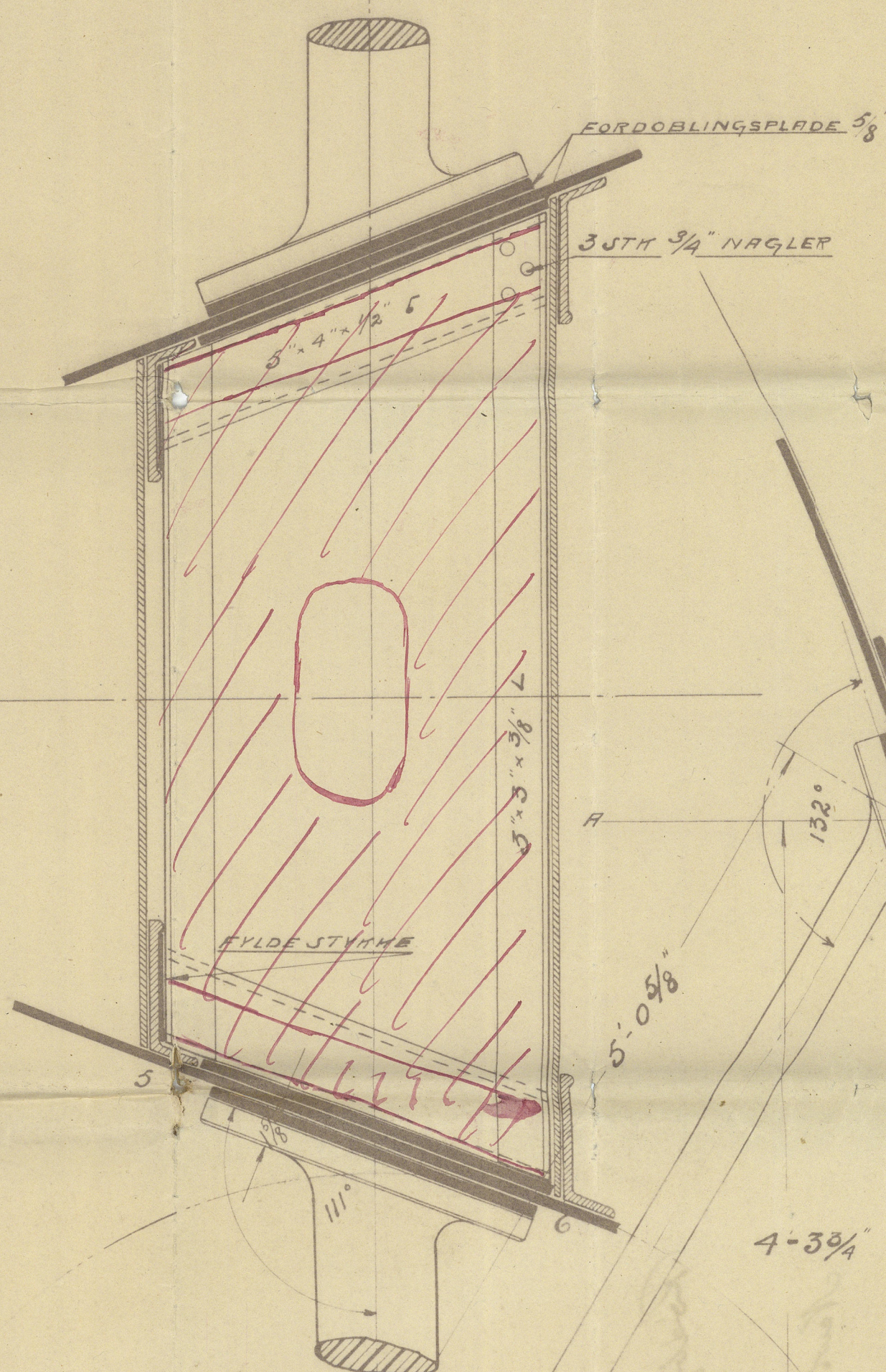
OBS!  
DIAM: AF HUL I LEJET  
STØBES 6". RESTEN  
UDBORES PÅ STEDET.



SKITSE AF HULLER I FODEN

BASISLINIE

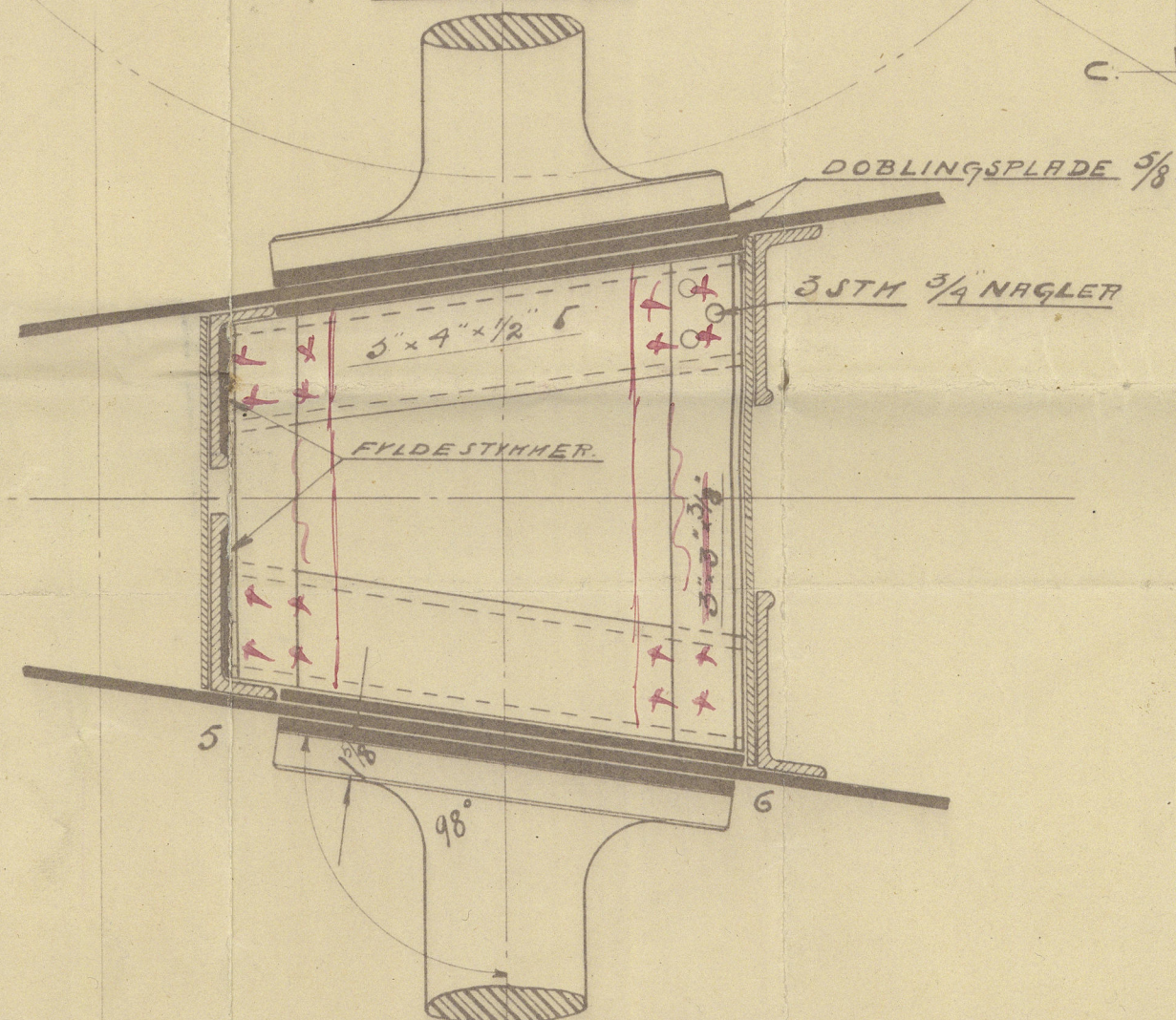
SNIT A-B



FORDOBLINGSPLADE  $\frac{5}{8}$

35TH 3/4" NAGLER

SNIT C-D.



DOBLINGSPLADE 5/8

35TH 3/4 NAGLER

25TH PR SKIB.

MINTE DE SHIB

19.5.17.

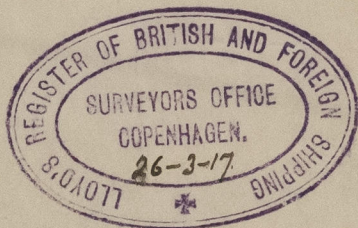


Ridbyham's *Gernskits-*  
*vægt.*

Newsdys. Nos 1-2-3.  
4-5-6.

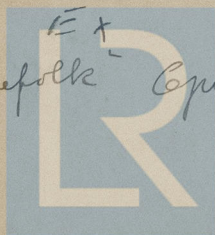
Propellertrackets.

(12)



1/11 Westward

"Danefolk" Cpn. Rpt. No. 6026.



© 2020

Lloyd's Register  
Foundation