



16.7.03

RUDDER FRAME

OF

S.S. NO 378

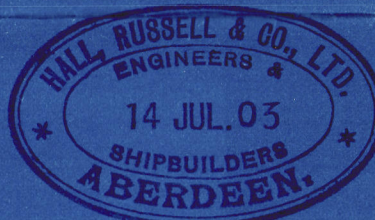
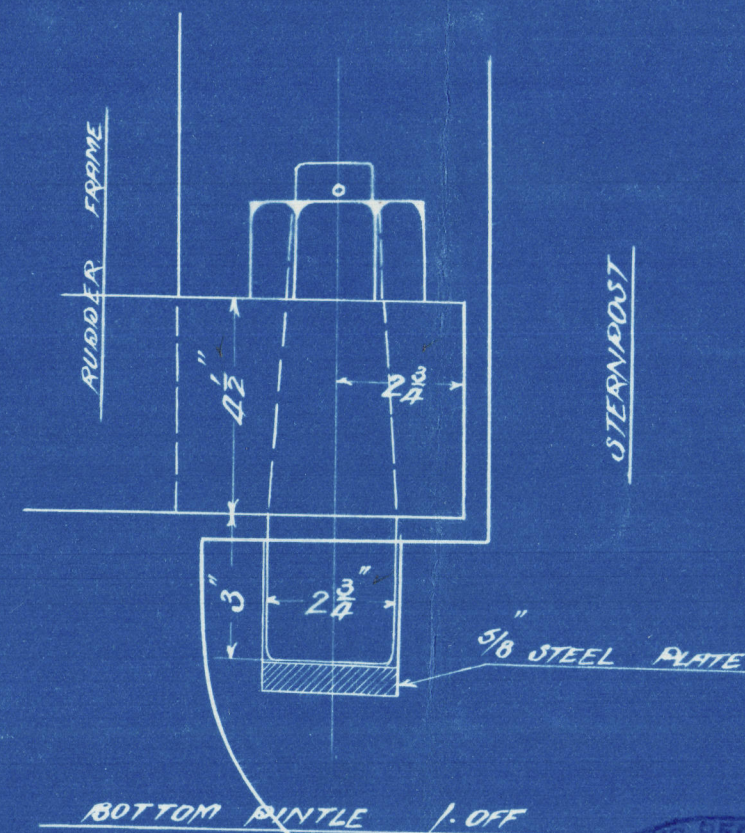
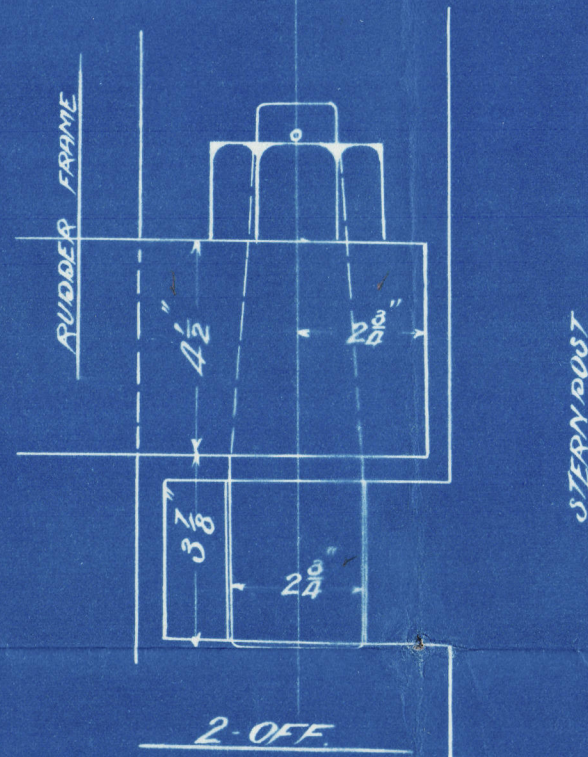
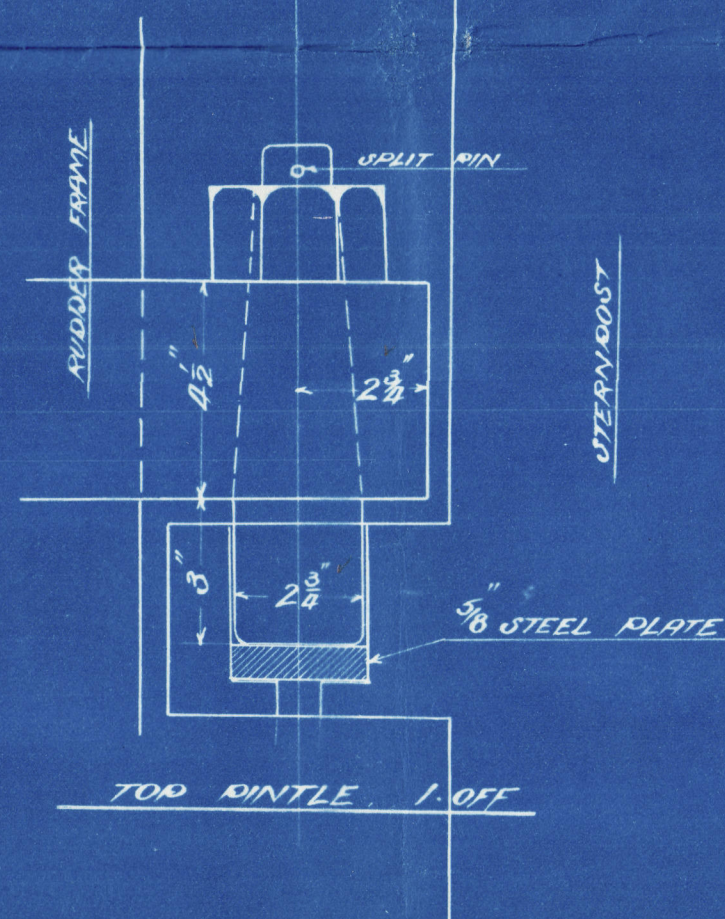
SCALE 1/16" = 1/FOOT

TO PASS MESSRS LLOYD'S SURVEYORS' INSPECTION

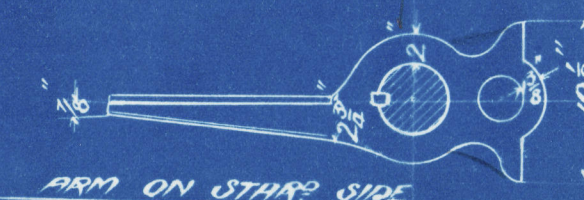
TO BE OF BEST FORGED SCRAP IRON

ARRANGEMENT OF PINTLES

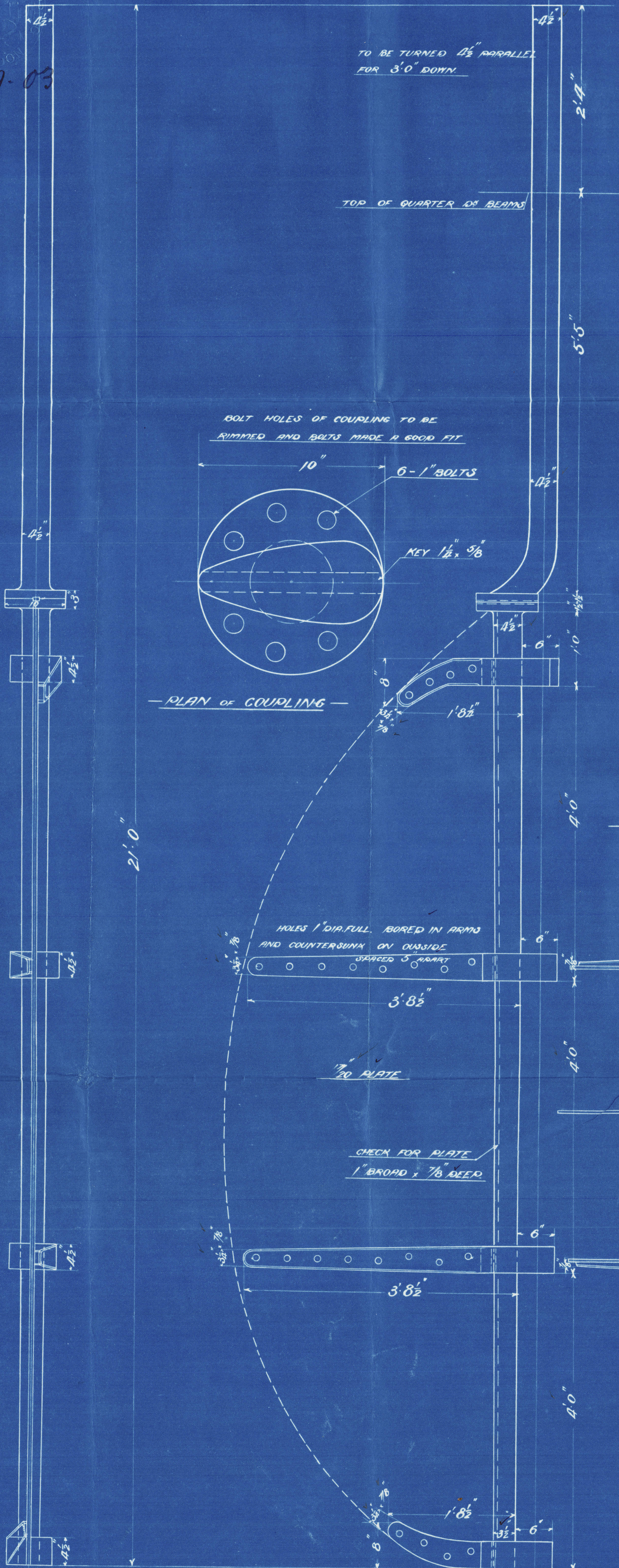
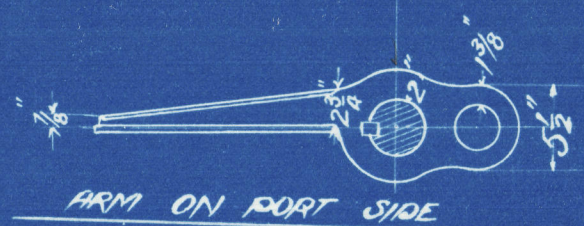
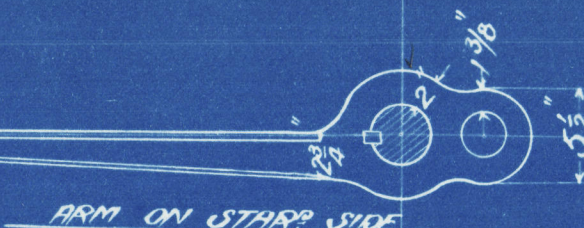
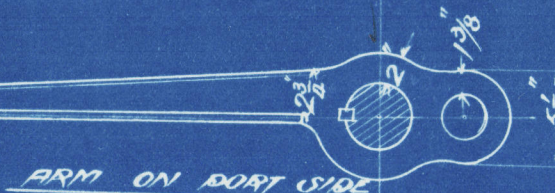
4 STEEL PINTLES FITTED COMPLETE



STOPPER
SEE FULL SIZE PLAN



ARMS SHANK AND KEYS ON



BOLT HOLES OF COUPLING TO BE
RIMMED AND BOLTS MADE A GOOD FIT

PLAN OF COUPLING

HOLES 1" DIA. FULL BORED IN ARMS
AND COUNTERSUNK ON OUTSIDE
SPACED 3" APART

7/16" PLATE

CHECK FOR PLATE
1" BROAD x 7/8" DEEP



Lloyd's Register
Foundation

Wm Russell & Co.

N^o 348.

Plan of Rudder.



Abstract N^o 4822

S/S "Thrift"

Berryden



© 2021

Lloyd's Register
Foundation