

— R U D D E R   F R A M E —

— R U D D E R   F R A M E —

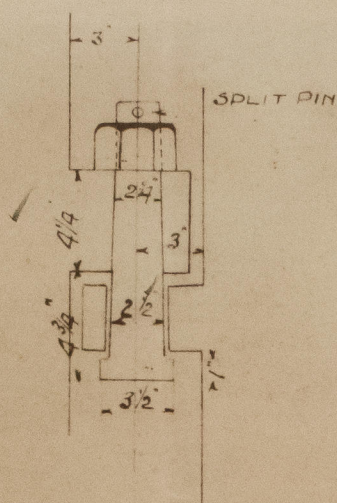
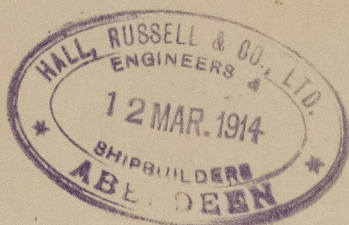
S. S. N<sup>o</sup> 566.

SCALE 1 INCH = 1 FOOT

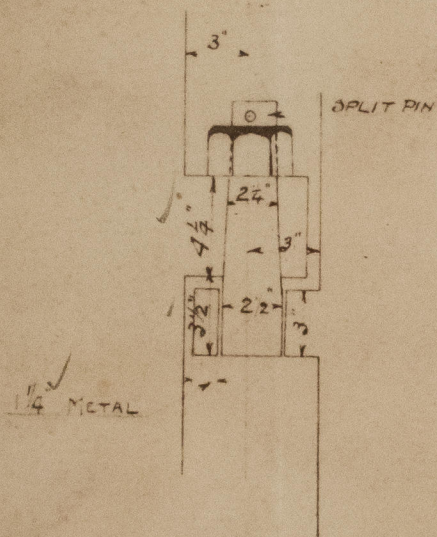
MAIN PIECE OF ROLLED MILD STEEL

ARMS TO BE FORGED IRON

SPEED 10 KNOTS

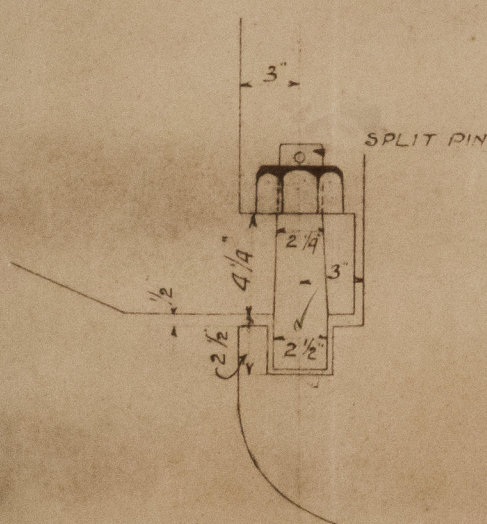


TOP DINTLE

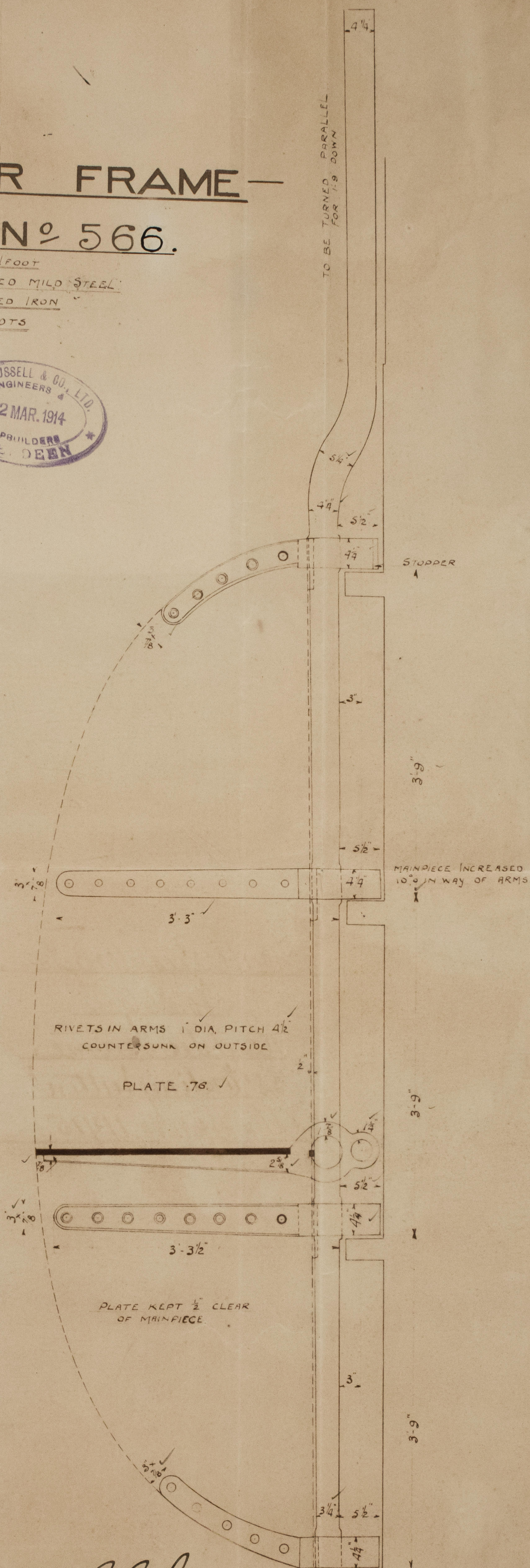


1/4 METAL

2 OFF



BOTTOM PINTLE 1-OFF



STOPPER

MAINPIECE INCREASED  
10% IN WAY OF ARMS

RIVETS IN ARMS 1" DIA, PITCH 4 1/2  
COUNTERSUNK ON OUTSIDE

PLATE 76. ✓

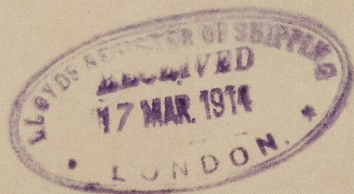
PLATE KEPT  $\frac{1}{2}$ " CLEAR  
OF MAIN PIECE.

18.3.14





W. & A. Russell & Co. Ltd.  
No. 566  
Rudder Frame.  
S.S. "Oveline" Nutter  
Abn. rept. No. 11415.



008615-008627-0169



© 2021

Lloyd's Register  
Foundation