

MIDSHIP SECTION.

STEEL SCREW TRAWLERS

NOS. 417. 418. 419. & 420.

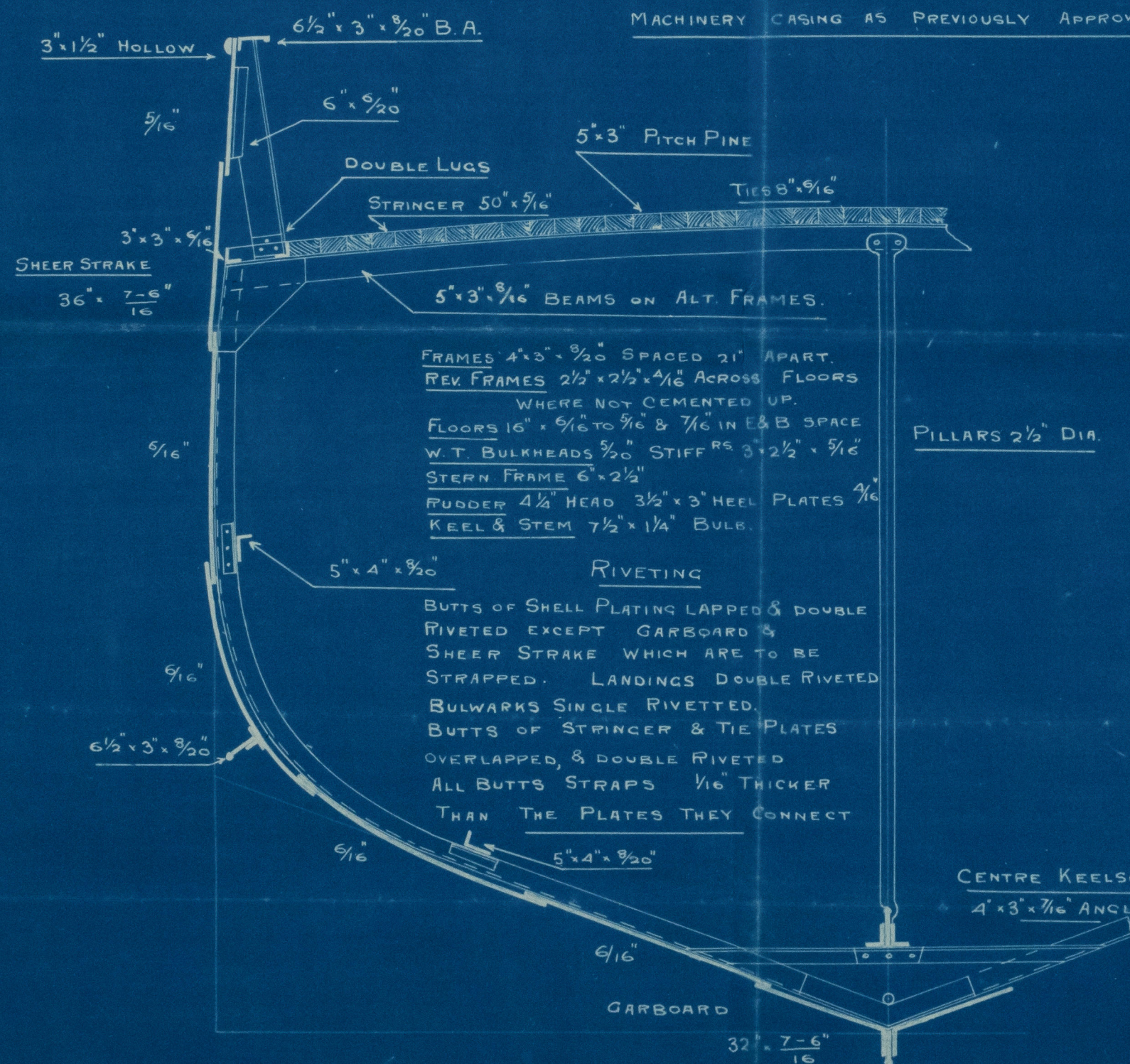
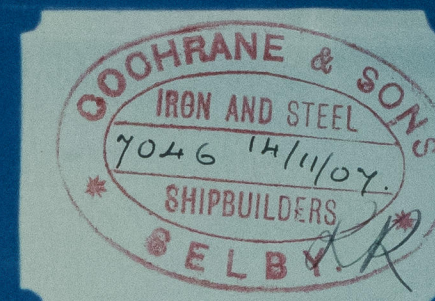
LENGTH. 105'-0" x 21'-6" EX x 12'-0" MOULDED.

SCALE $\frac{1}{2}$ " = 1 FOOT.

TO CLASS 100.A1. STEAM TRAWLER

DECK PLATED OVER IN WAY OF MACHINERY SPACE

MACHINERY CASING AS PREVIOUSLY APPROVED.



NUMERALS.

| | | | |
|-------------|--------|-----|------|
| 1/2 BREADTH | 10.7 | L/B | 4.85 |
| 1/2 GIRTH | 18.58 | | |
| DEPTH | 12.43 | L/D | 8.35 |
| 1ST NO. | 41.71 | | |
| | 103.87 | | |
| 2ND NO. | 4332.6 | | |

EQUIPMENT

| | |
|------------------|-------------------------|
| 1ST BOWER ANCHOR | 4 1/2 CWT EX STOCK |
| 2ND | " 4 " |
| 3RD | " 2 1/2 " |
| 75 FATHOMS | 15/16" SHORT LINK CABLE |
| 60 | " 5 1/2" HAWSER |
| 60 | " 3 1/2" WARP |

apw



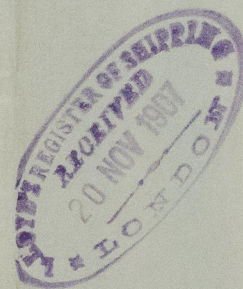
Lloyd's Register Foundation

105' 0" x 21' 6" x 12' 0"

Cochrane & Sons
Nos. 417, 418, 419 and 420

Duplicate.
Midship Section

s/s "Bellona"
Hull Report No.



008618-008627-0078



© 2021

Lloyd's Register
Foundation