

# **NO. 1074 STEM, STERN FRAME AND RUDDER.** **SCALE 1/2 IN. TO ONE FT.**

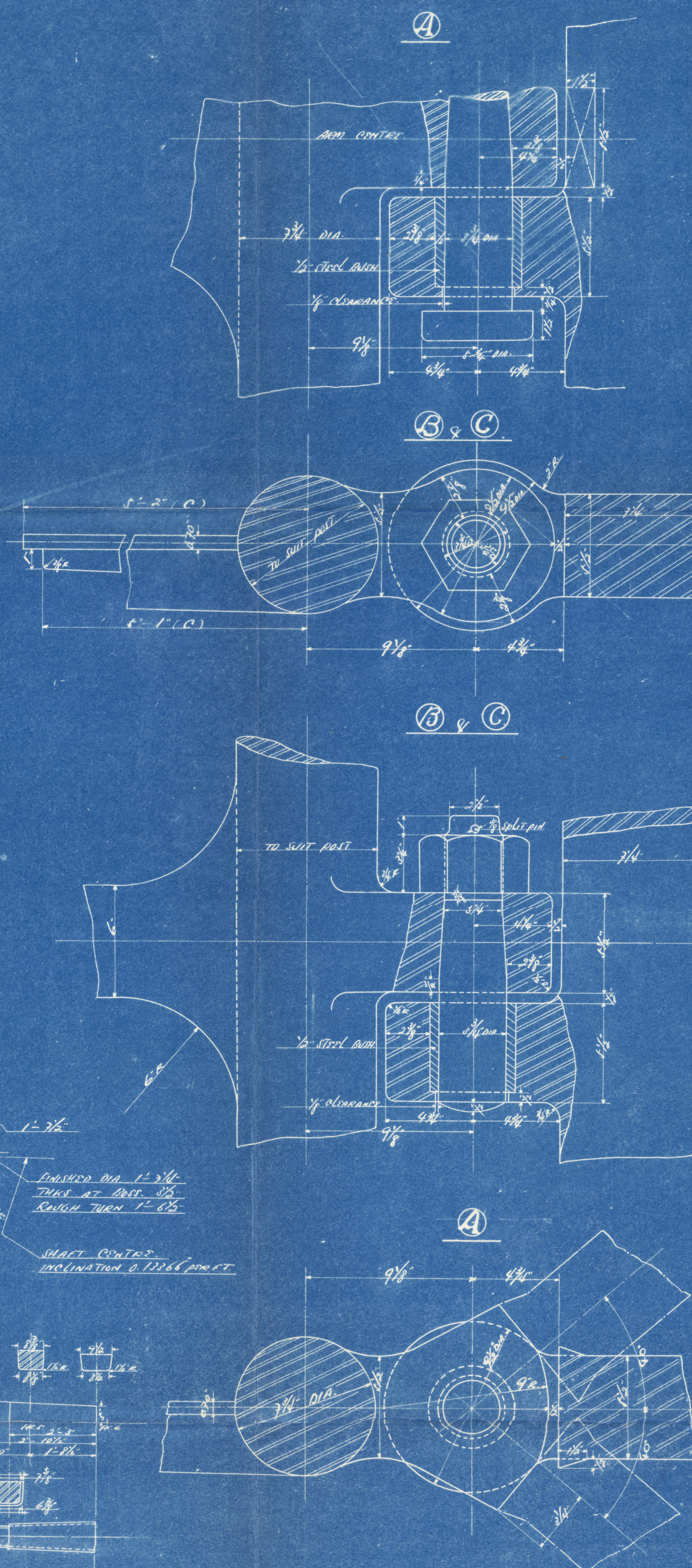
## **MATERIALS:**

STEM	FORGED OR ROLLED STEEL
STEM FRAMES	CAST STEEL
MAIN PLATE & RUDDER ARMS (ONE CASTING)	CAST STEEL
RUDDER HEAD	FORGED STEEL
PINTLES	FORGED STEEL

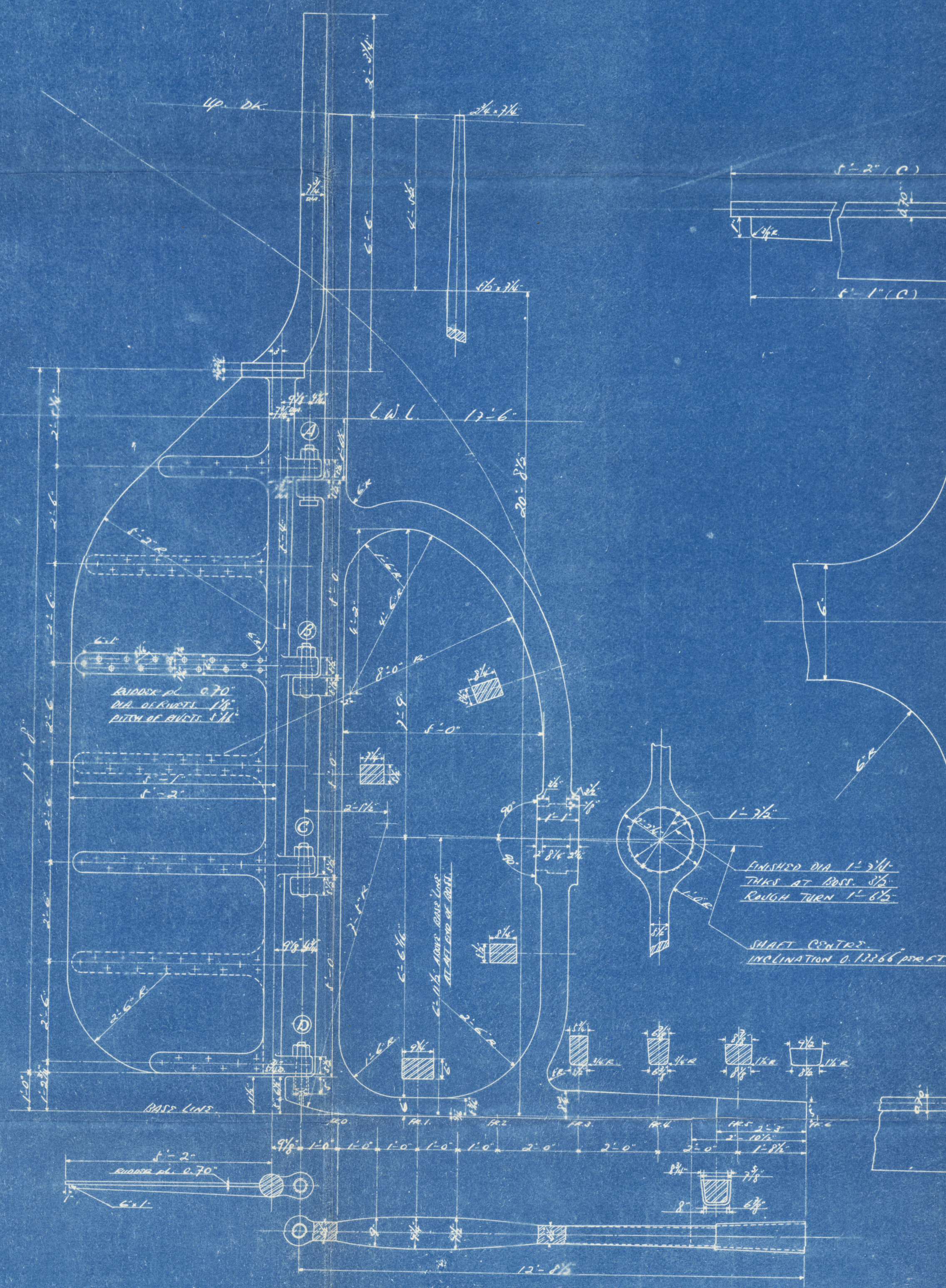
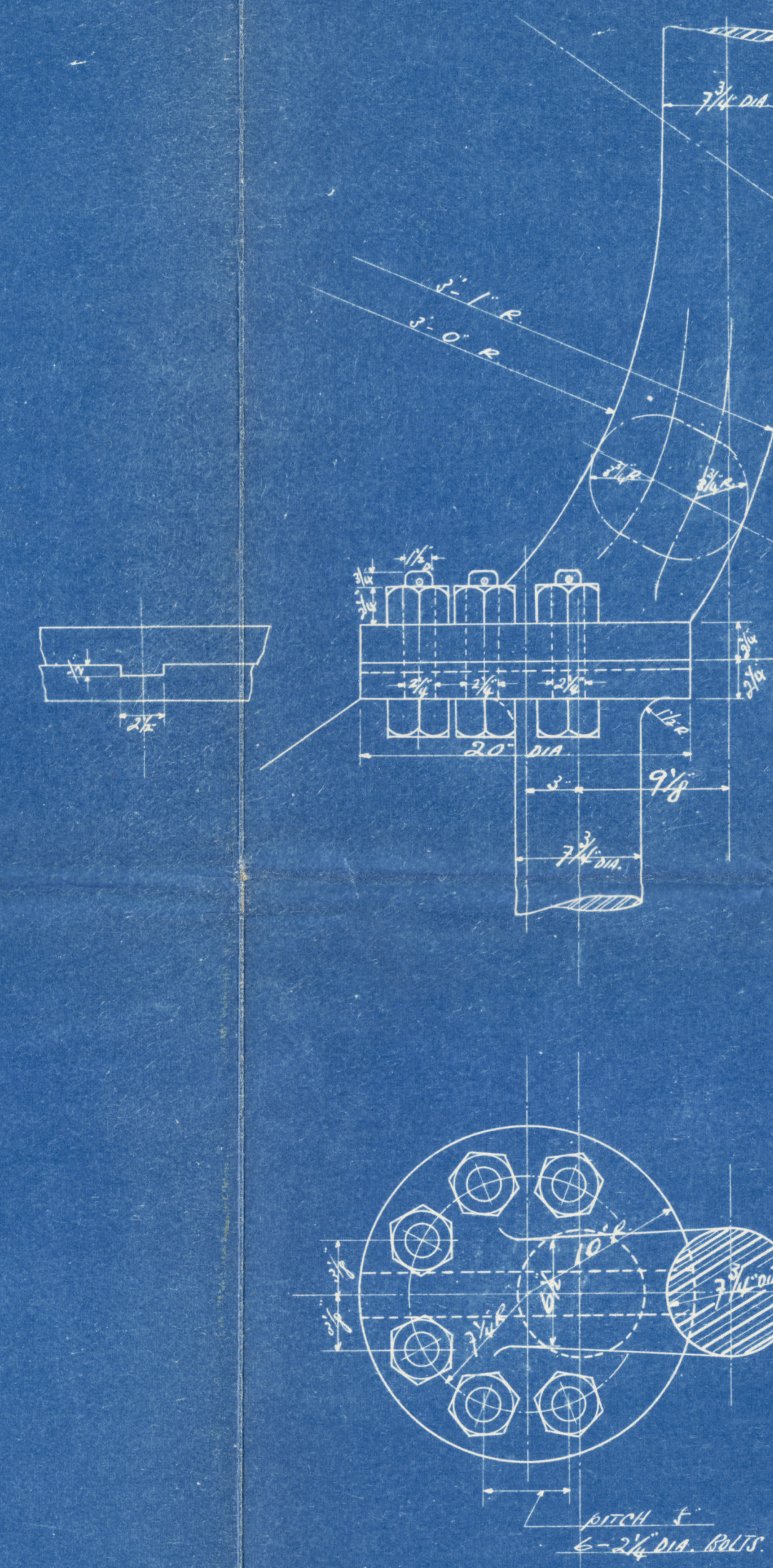
## **N.B.**

TOTAL RUDDER AREA AHEAD THE FORWARD  
 EDGE OF MAIN PLATE.  $A = 84.88 \text{ SQ. FT.}$   
 DISTANCE OF RUDDER AREA CENTROID FROM  
 THE CENTRE LINE OF PINTLES  $D = 3.01 \text{ FT.}$   
 $A \times D = 255.49$   
 SPEED OF SHIP.  $V = 11 \frac{1}{2} \text{ KNOTS.}$

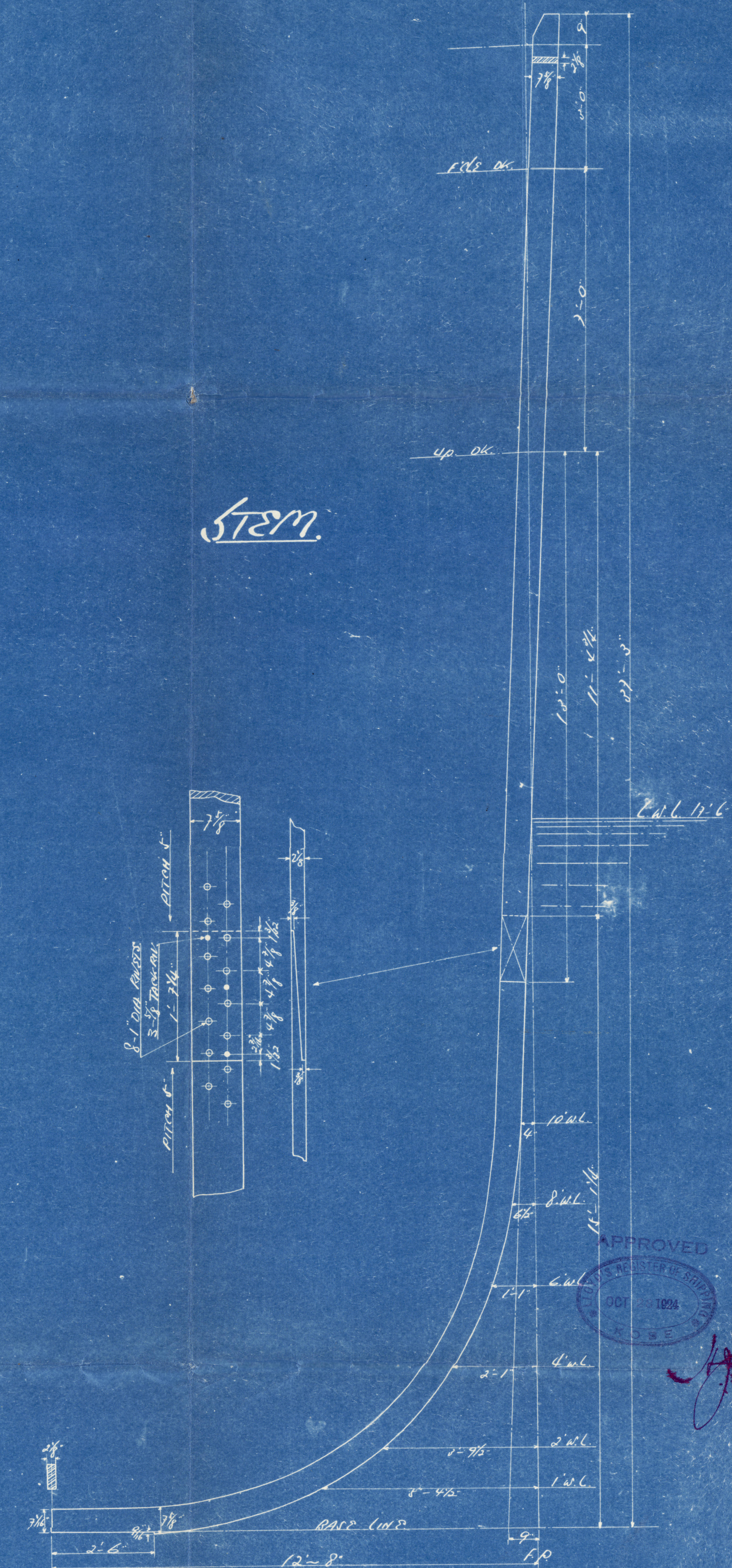
## **DETAIL OF GUDGEONS & PINTLES.** SCALE 1/4 IN. TO 1 IN.



## **DETAIL OF COUPLING.** SCALE 1/8 IN. TO 1 IN.



## **Stem.**



APPROVED  
 001 100  
 100

**R**



<sup>a</sup>  
8/5 Fukuichi Mann

414  
Gen. Box ~~107~~



© 2019

Lloyd's Register  
Foundation

008608-008617-0359