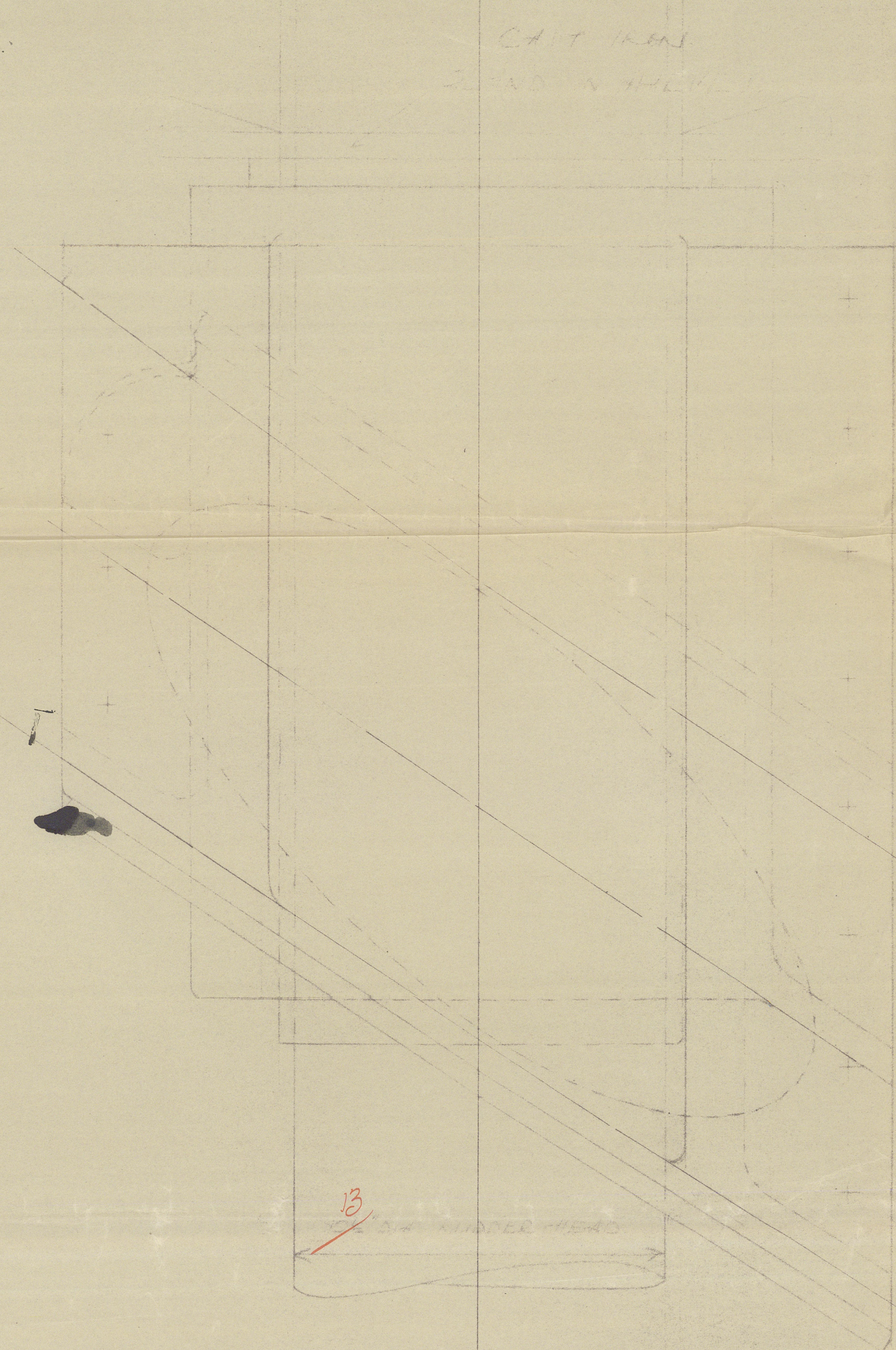
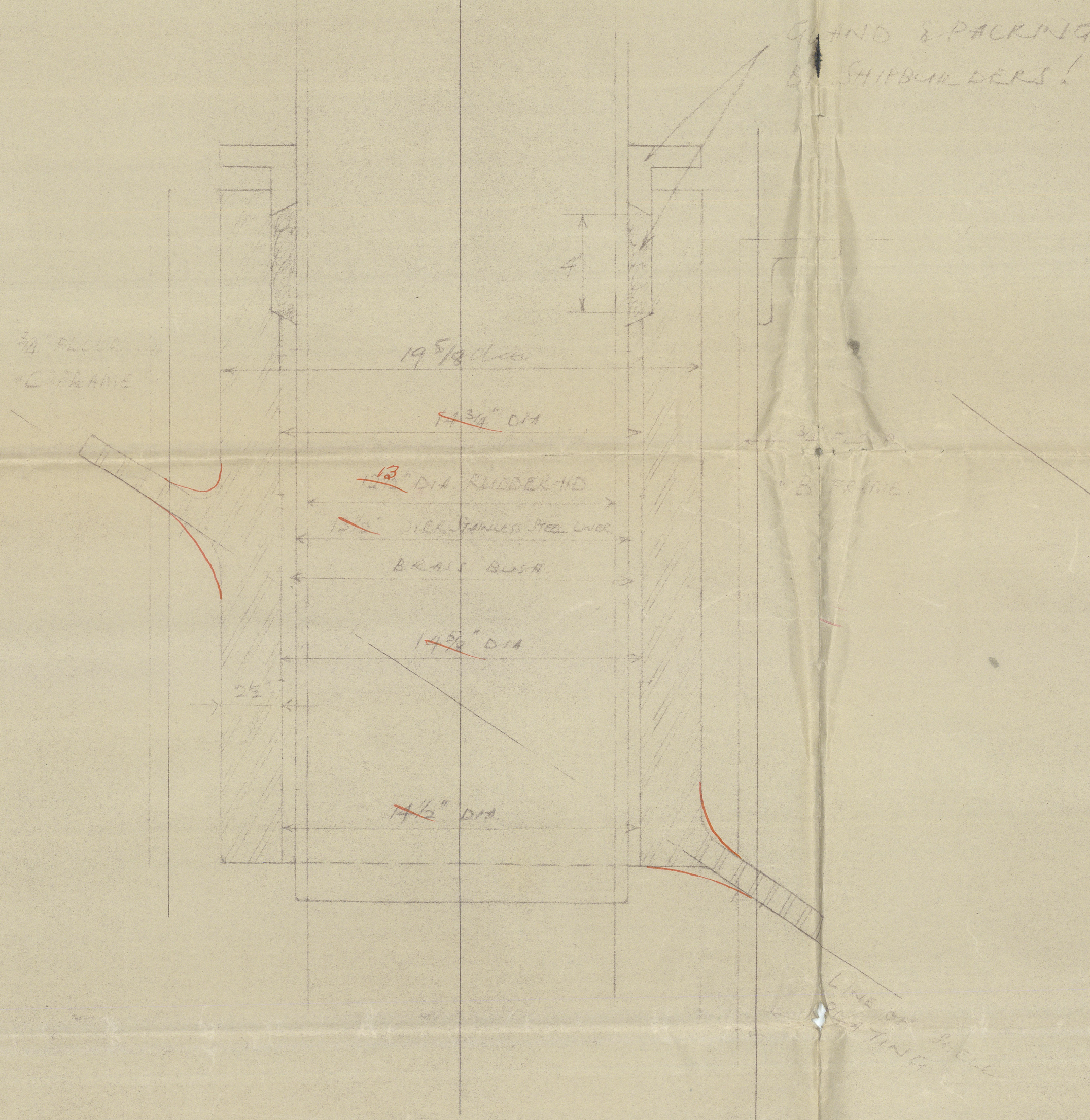


11/26

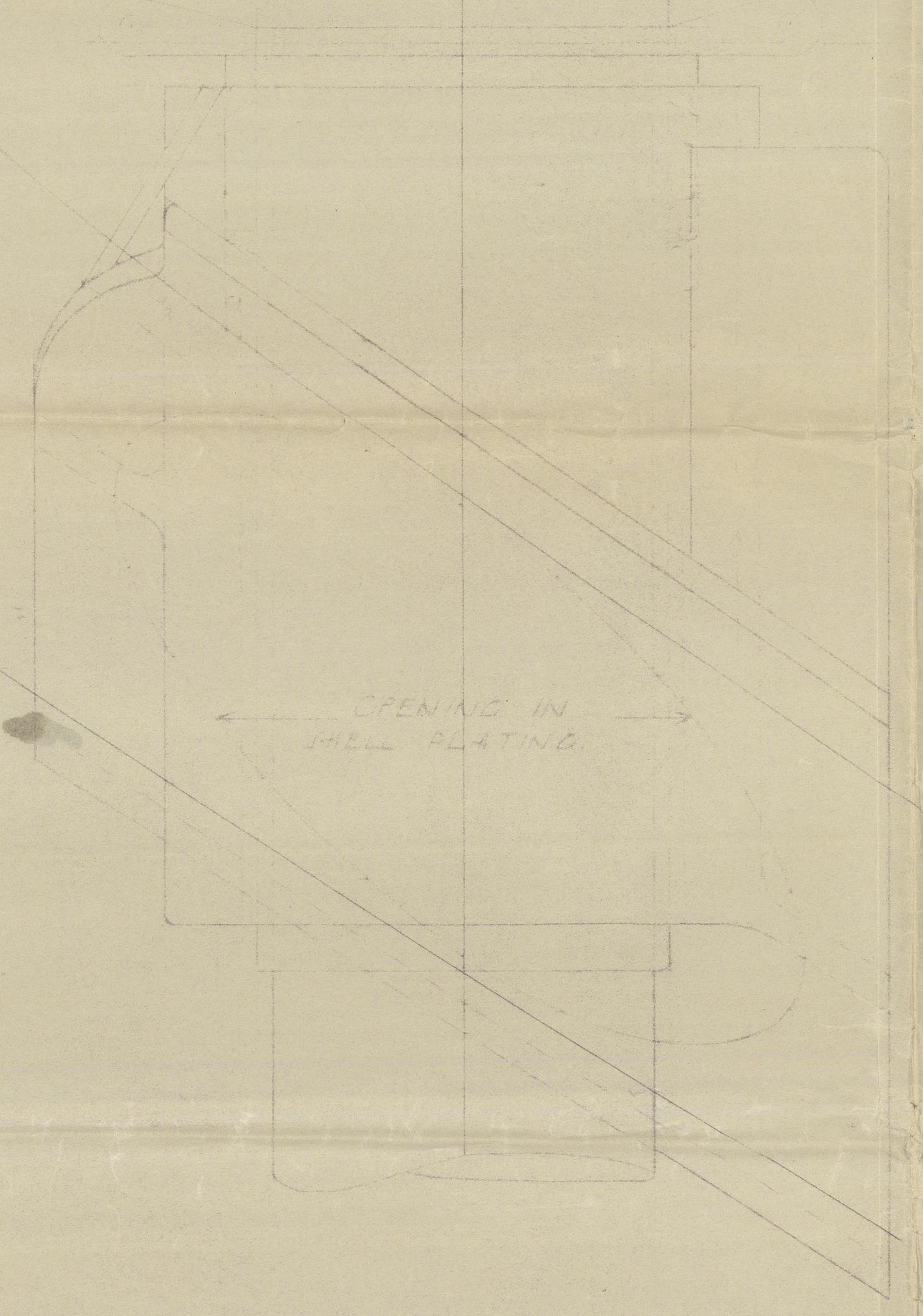


TRANSVERSE ELEVATION  
LOOKING FORWARD  
FROM BEARING

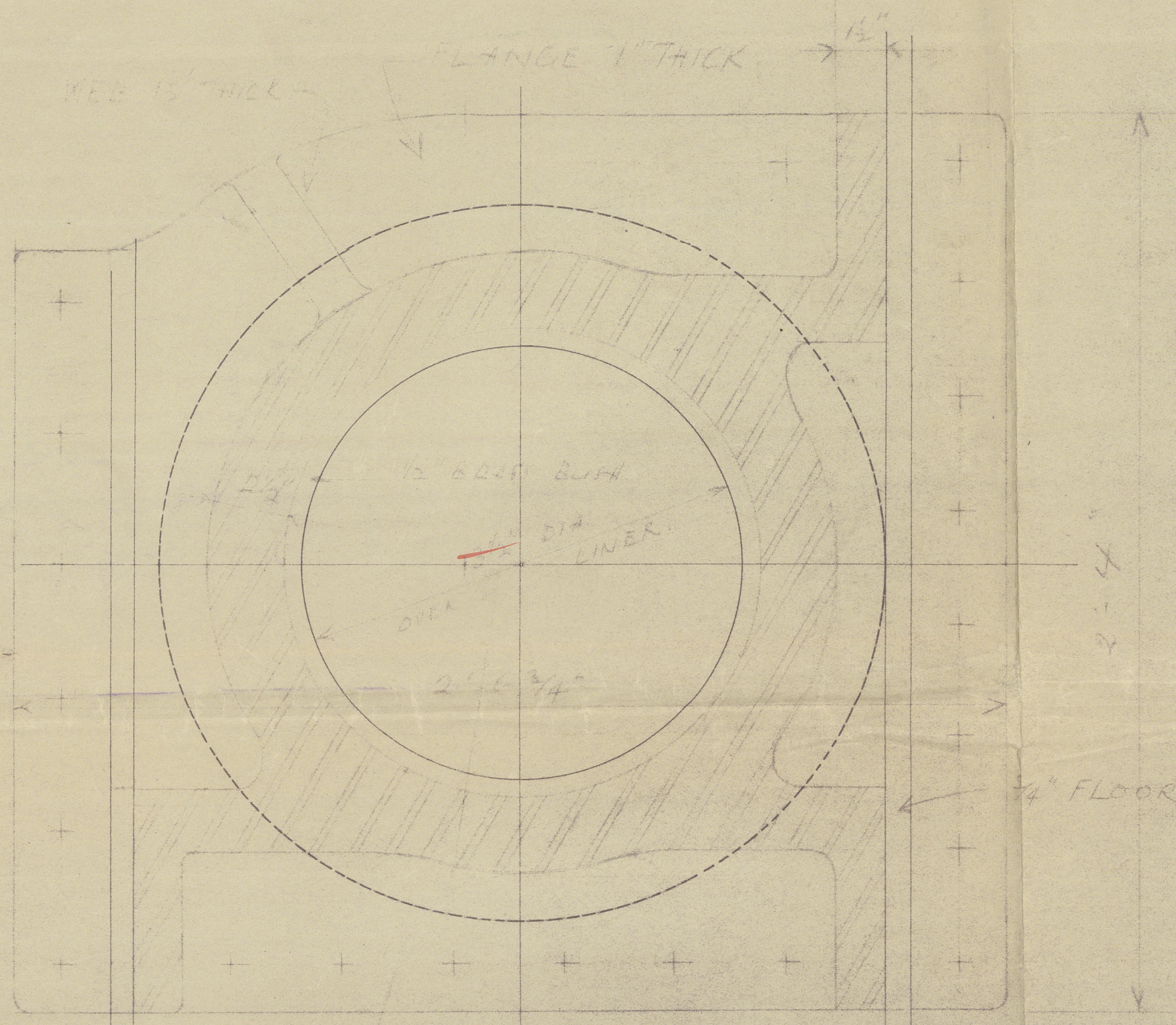
TOP OF FLOOR 18'



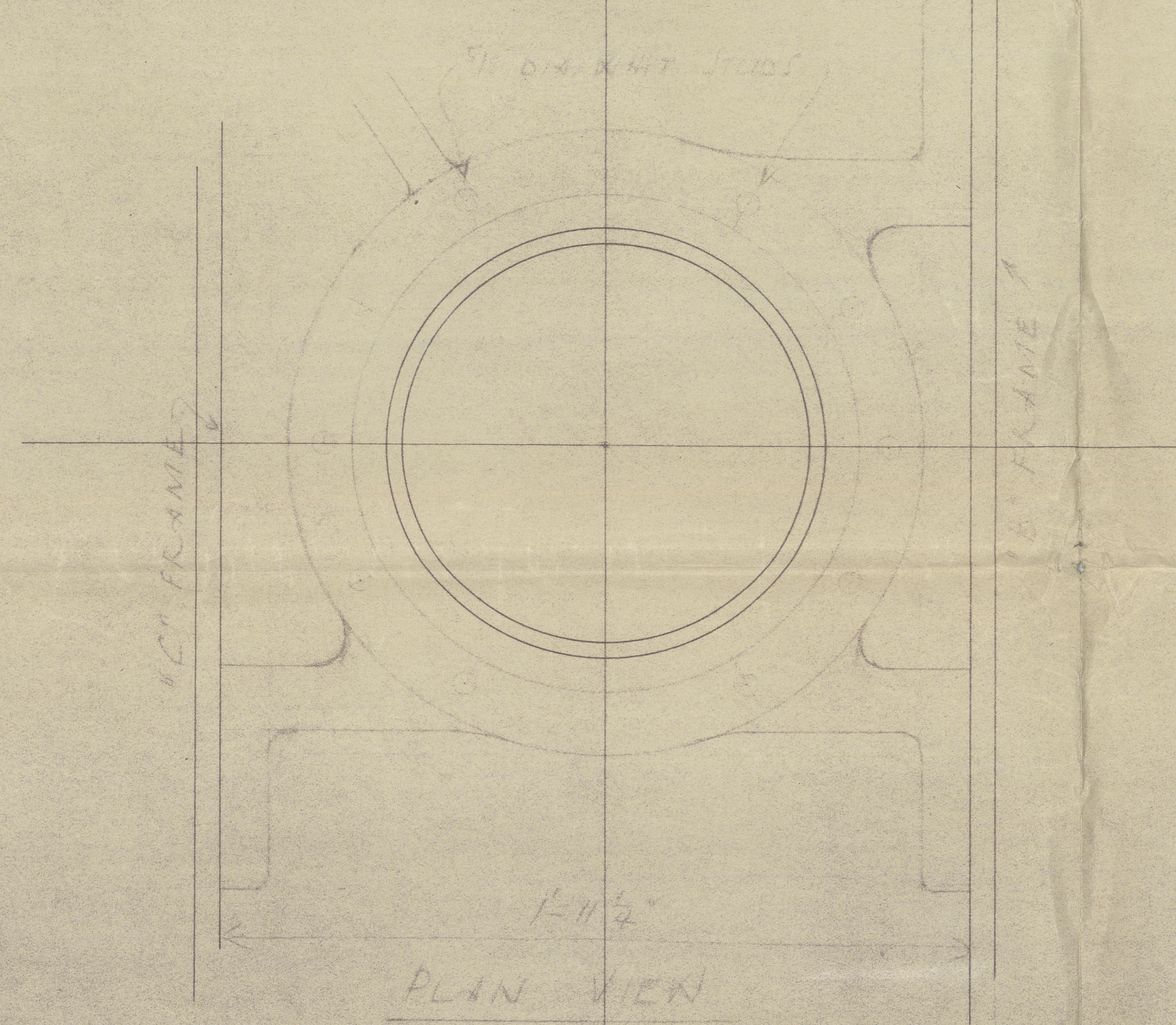
FORE & AFT SECTION  
AT CENTRE OF BEARING



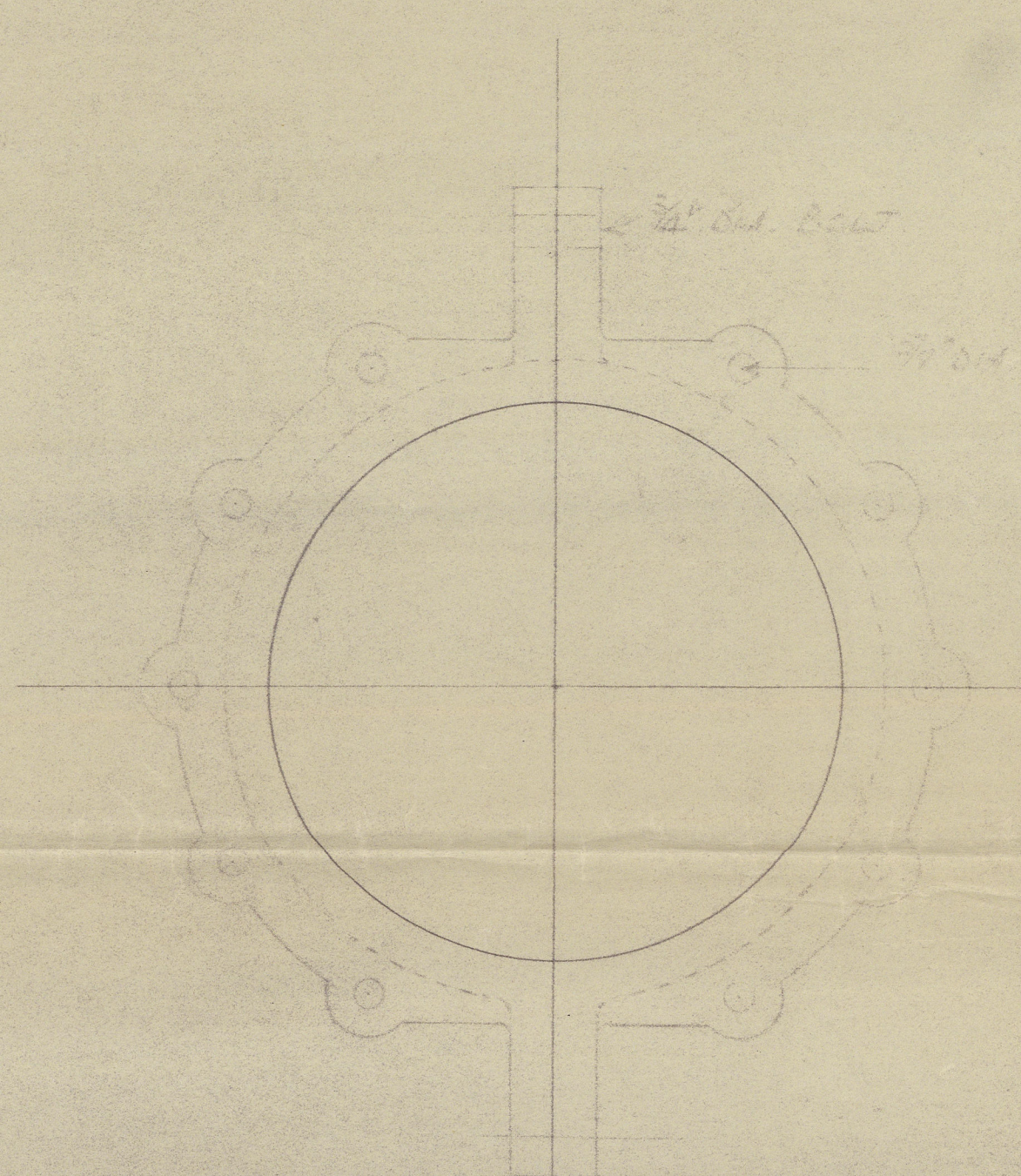
TRANSVERSE ELEVATION  
LOOKING FORWARD  
FROM BEARING



HORIZONTAL SECTION  
BEARING BOTTOM FLANGE  
PORT BEARING



PLAN VIEW  
AT TOP OF BEARING  
WITH GLAND REMOVED  
PORT BEARING



PLAN VIEW OF GLAND  
MATERIAL - CAST IRON

# T.S.S. NO. 266-7 RUDDER BEARING

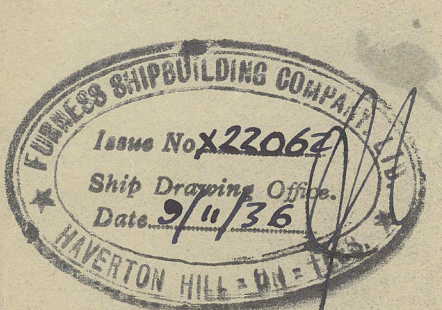
Scale - 3" = One Foot

1 REQD. PORT SIDE 1 REQD. STARBOARD SIDE  
FOR EACH SHIP.

MATERIAL - CAST STEEL

NOTE - TWIN RUDDERS!

11/26



DRG. NO. T. 1806

81018



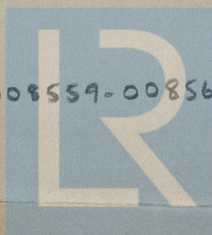
Nº 266.:7

Rudder Bearing.

(5)

S.S. Bachaguro  
MDB. RPT. No. 16030

S.S. Misra  
MDB. RPT. No. 16056



© 2020

008559-008568-0094

Lloyd's Register  
Foundation