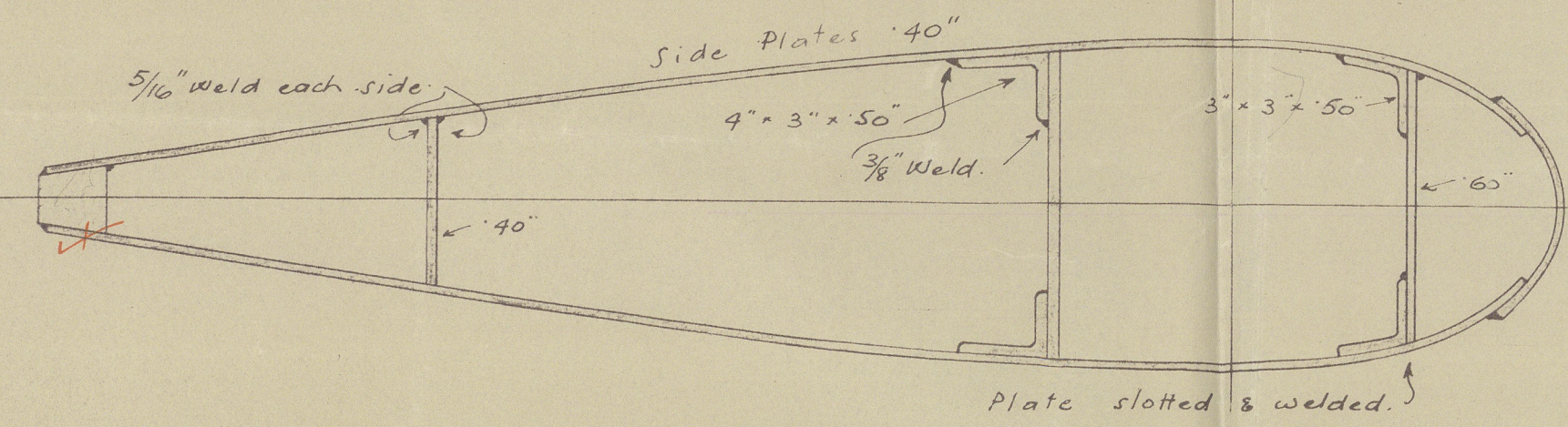
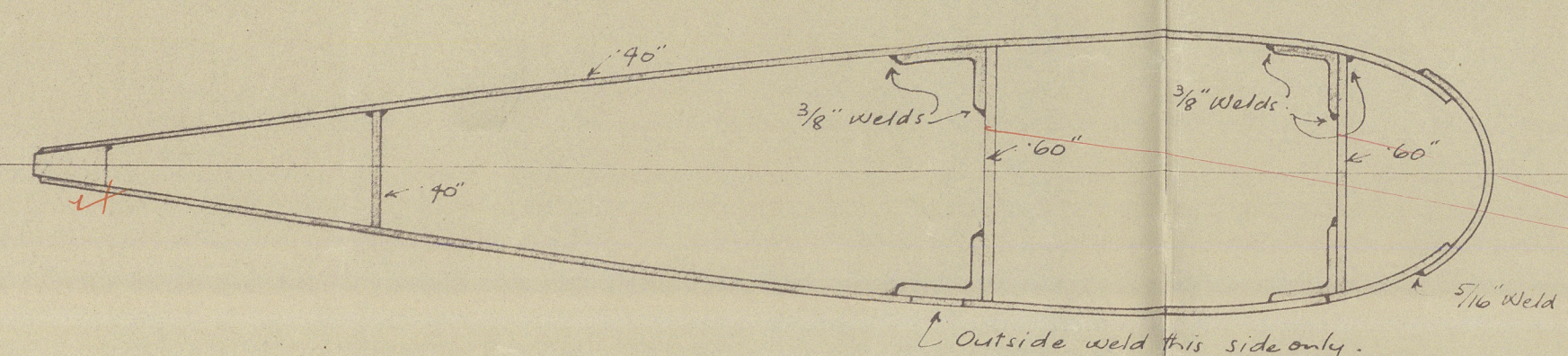


1811.36

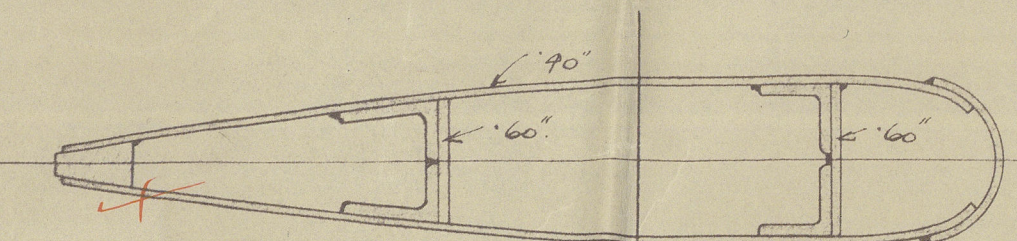


SECTION AT "A-B"



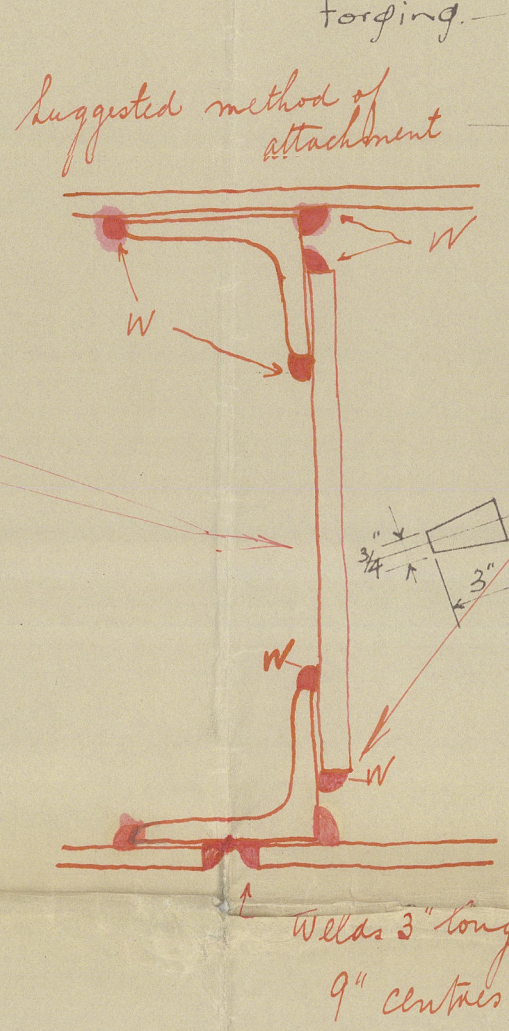
SECTION AT "C-D"

At Welding of side plate  
to forging to Surveyors Satisfaction

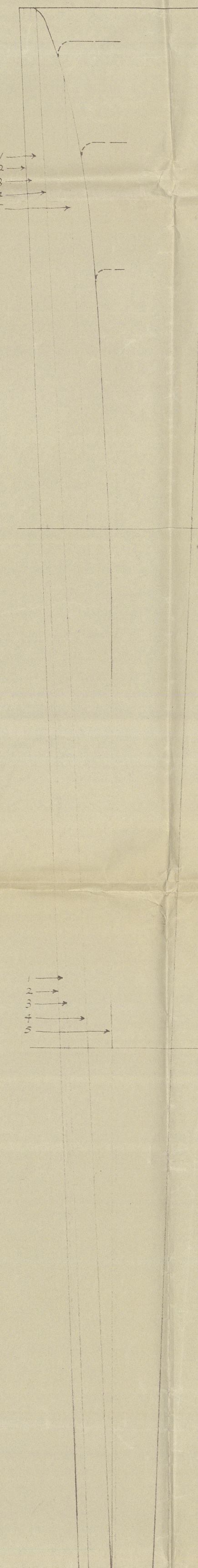


SECTION AT BOTTOM

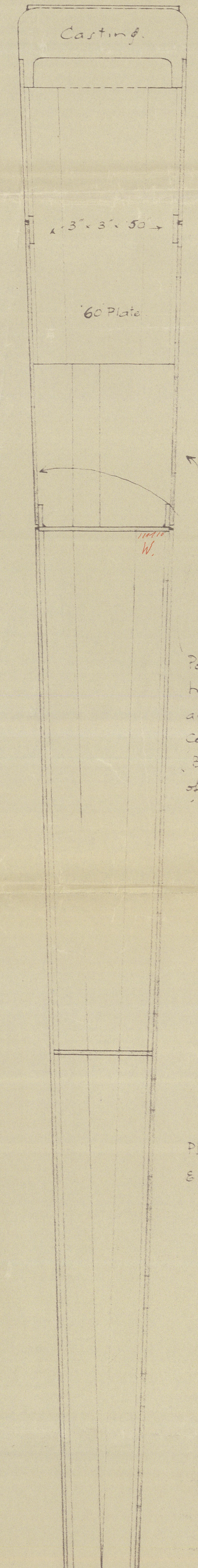
Welding of side plate  
also at 1/4\"/>



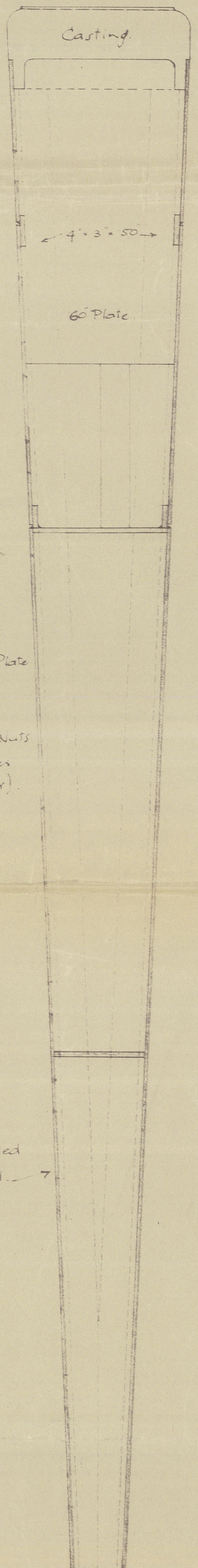
FORE & AFT SECTION



ELEVATION



No 1 SECTION  
looking Fore



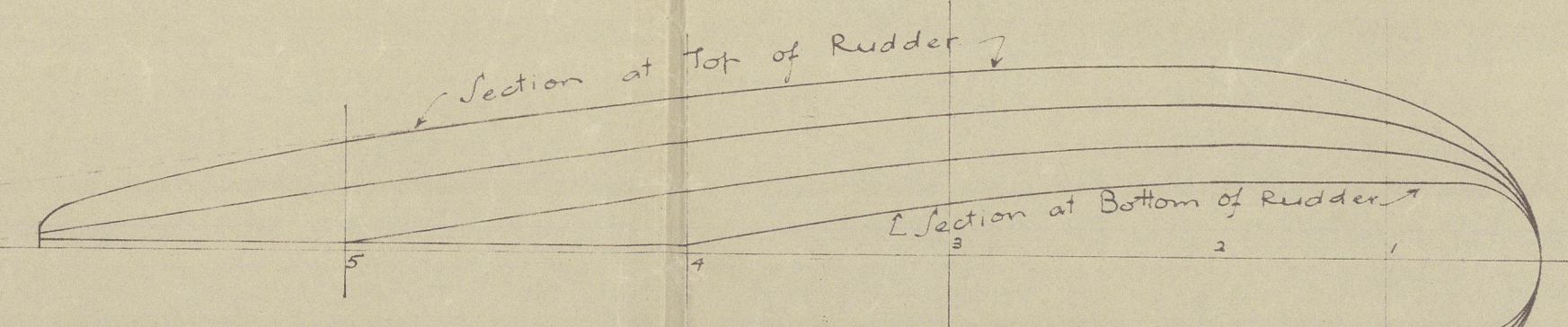
No 3 SECTION  
looking Aft

T. S. S. Nos. 266-7.

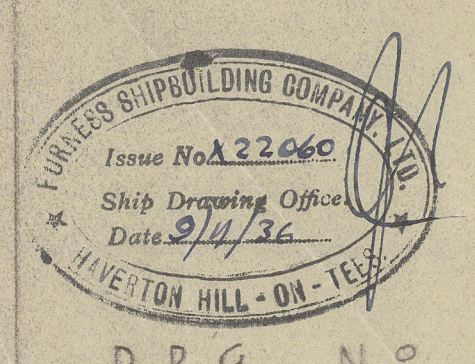
RUDDER STEELWORK.

Scale: 1 1/2\"/>

NOTATION: RUDDER FLEET RIGIDLY NEEDED.



HORIZONTAL SECTIONS  
AT 4' 0\"/>



DRG No T 1804

18-11-36



Nº 266. 7  
Rudder Steelwork

(7)

S.S. Bachaguro  
MDB. RPT. No. 16030

S.S. Misoo  
MDB. RPT. No. 16055



© 2020

Lloyd's Register  
Foundation

008559-008568-0093