

SHIP NOS 266 & 267.
MIDSHIP OILTIGHT TRANSVERSE BULKHEAD.

DIMENSIONS:- LENGTH. B.P 365'-4½" MAXIMUM BREADTH MOULDED 64'-0" DEPTH MOULDED 18'-0"
NORMAL BREADTH MOULDED 62'-6"

"ISHERWOOD" COMBINATION SYSTEM.

"ARCFORM." PATENT.

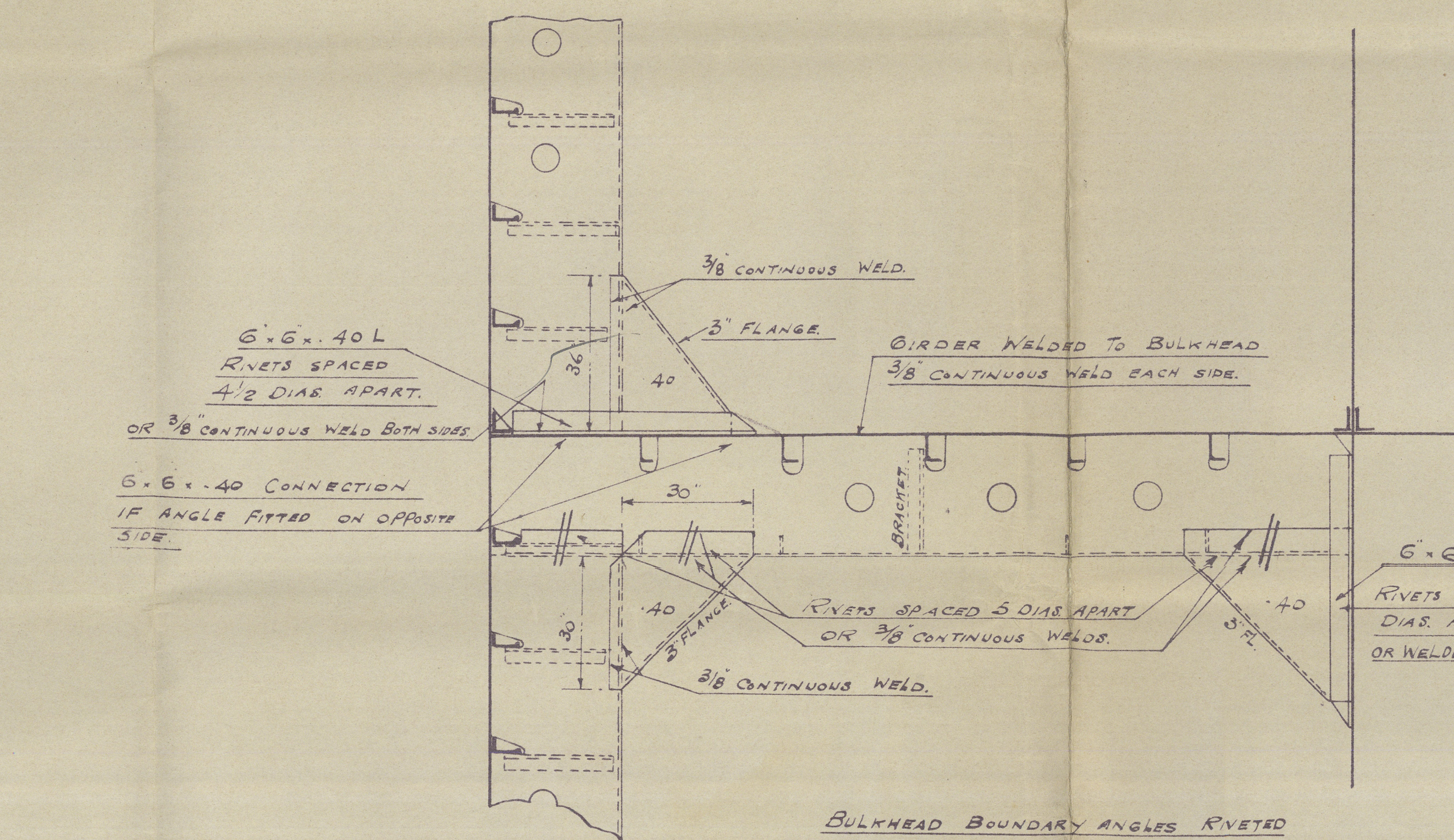
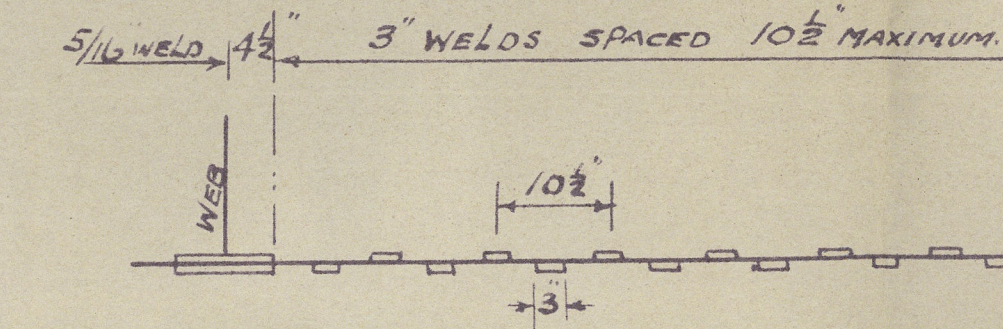
— SCALE $\frac{1}{2}'' = 1'-0''$ —

REQUIREMENTS OF THE RULES FOR THE APPLICATION
OF ELECTRIC ARC WELDING TO SHIP CONSTRUCTION
TO BE COMPLIED WITH.

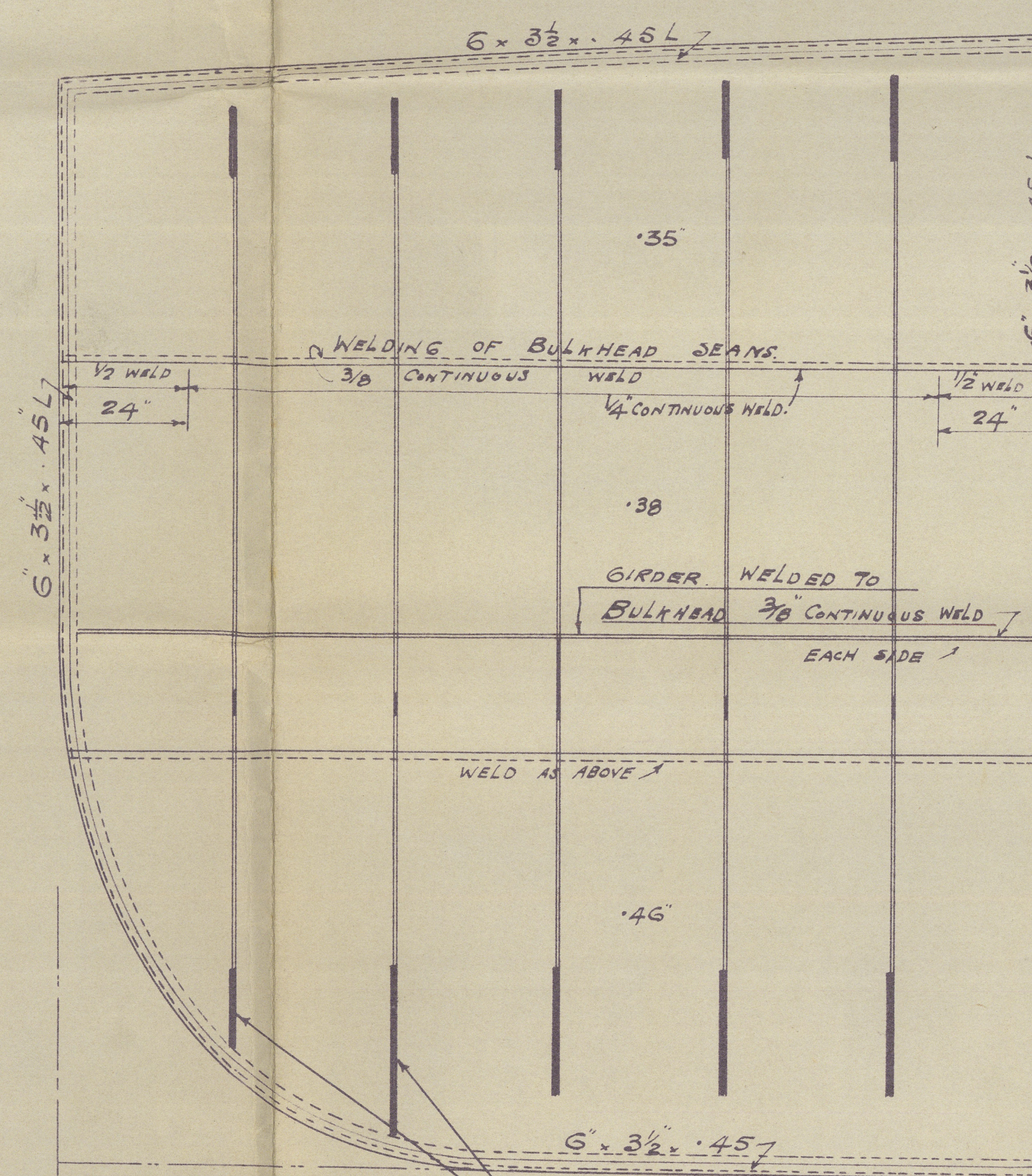
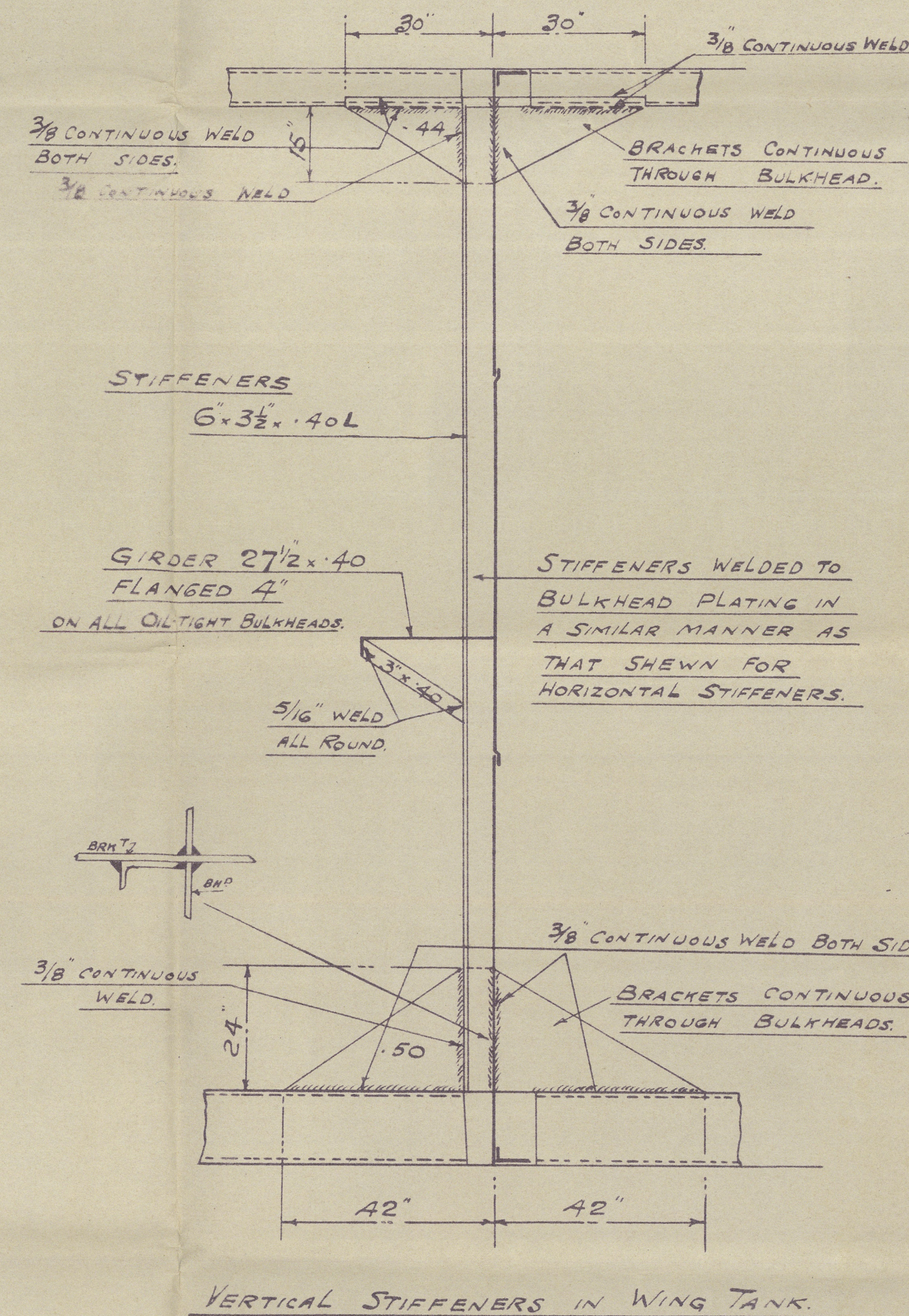
BRAKETS CONTINUOUS THROUGH
BULKHEADS. $\frac{3}{8}$ " CONTINUOUS WELD
BOTH SIDES AND ON EACH SIDE
OF BULKHEAD.

WELDING OF TRANSVERSE BULKHEAD STIFFENERS

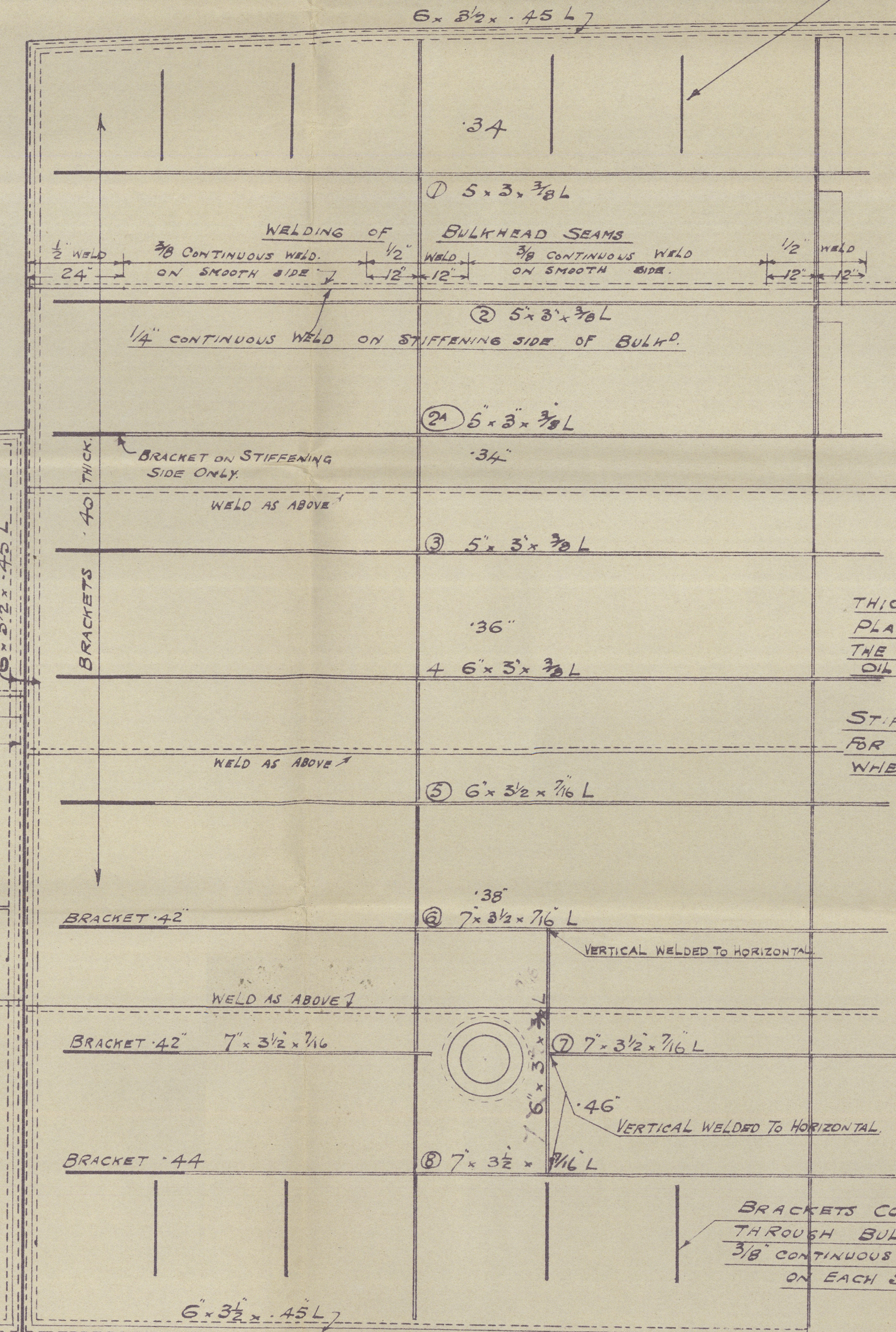
NOTE: NOTCHES FOR STIFFENERS TO BE WELL ROUNDED
AT CORNERS AND NOT ROUGH PUNCHED.
LIGHTENING HOLES IN BULKHEAD WEBS ETC.
TO BE AS SHOWN ON PLAN, AND NOT TO BE
LESS THAN 8" CLEAR OF NOTCHES.



BULKHEAD BOUNDARY ANGLES RIVETED
TO SHELL, DECK, TRUNK TOP AND
LONGITUDINAL BULKHEAD
RIVETS SPACED 5 DIAS. APART.
BULKHEAD BOUNDARY ANGLES WELDED
TO TRANSVERSE BULKHEAD THUS!



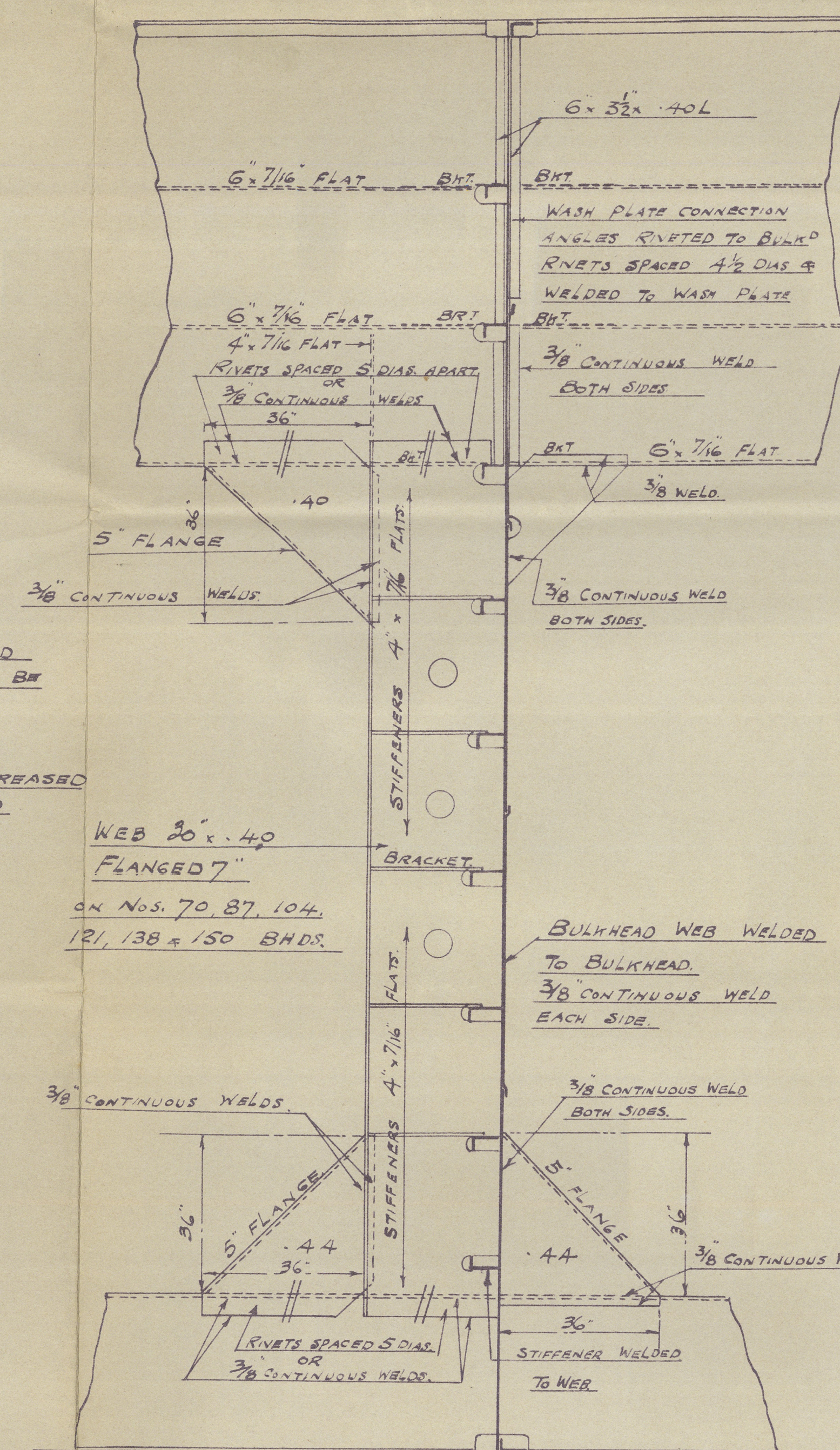
40 BRACKETS ON STIFFENING
SIDE OF BULKHEAD ONLY
RIVETED TO SHELL 6-7/8" RIVETS



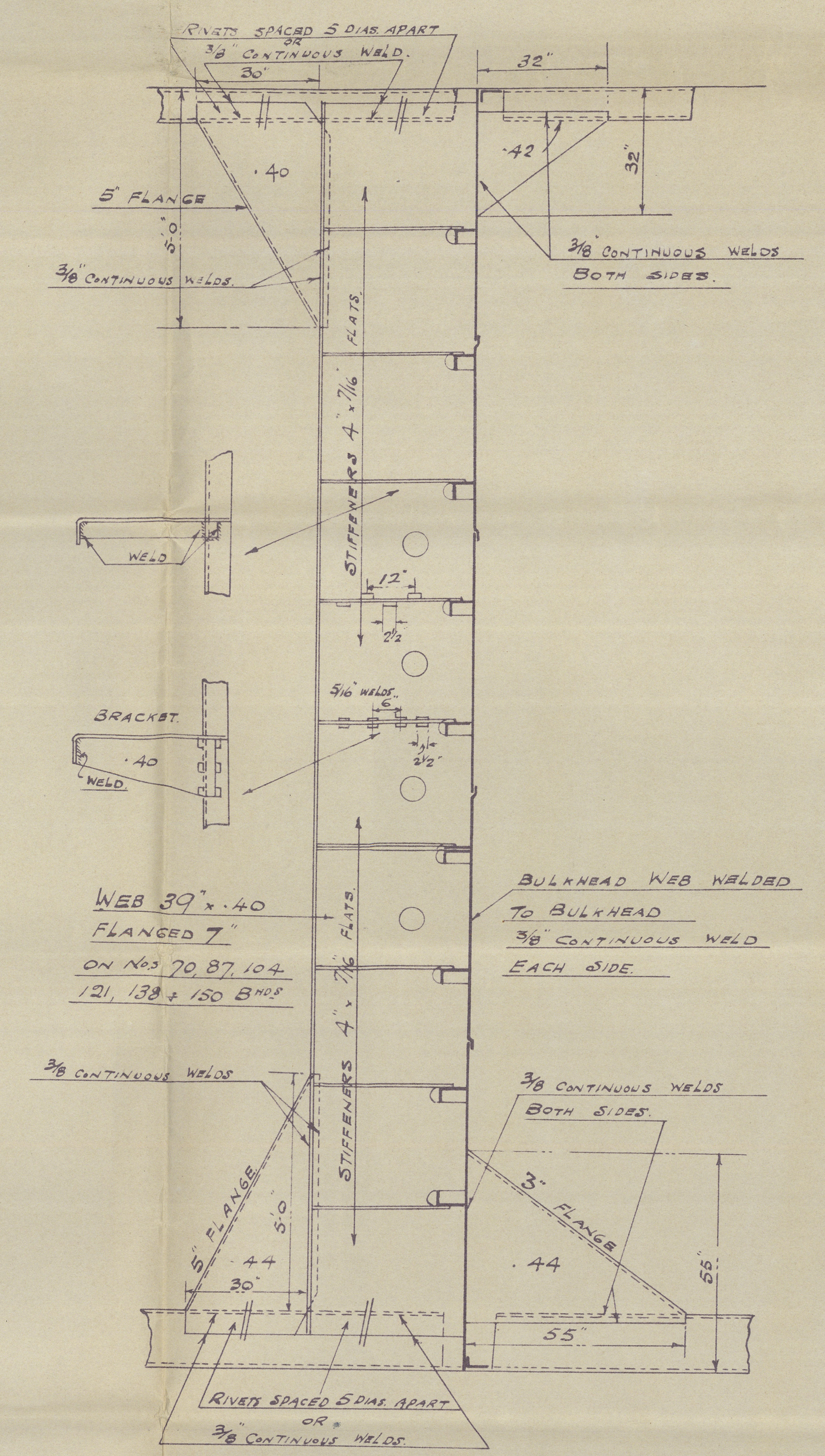
THICKNESS OF BULKHEAD
PLATING AS SHOWN TO BE
THE SAME THROUGHOUT
OIL TANKS.

STIFFENERS TO BE INCREASED
FOR SHEAR AT FORE END
WHERE NECESSARY.

BRACKETS CONTINUOUS
THROUGH BULKHEADS
3/8" CONTINUOUS WELD BOTH SIDES
ON EACH SIDE OF BULKHEAD



BULKHEAD WEB ON CENTRE LINE



BULKHEAD WEB 7'-11 $\frac{1}{4}$ " OFF CENTRE.

MESS^{RS}. FURNESS SHIPBUILDING CO., LTD.
HAVERTON HILL-ON-TEES.
/SH. NO 1735-1736/2.

SIR JOSEPH W. ISHERWOOD & Co., LTD
4, LLOYDS AVENUE,
LONDON, E.C.6

DATE 23-9-'36.

36"	AT LONGITUDINALS	Nos 1/10
38"	"	No 7
41"	"	No 8

32" AT STIFFENER	Nos 1 & 2
24" AT "	No 24
28" "	No 3
32" "	No 4 & 5
35" "	No 6
38" "	No 7
41" "	No 8.

3/8" CONTINUOUS WELD

Signed E. P.
15-9-20

FURNESS S.B COs

N^{os} 266 + 267

(3)

MIDSHIP OIL TIGHT

TRANSVERSE BULKHEAD

S.S. Bachaguro
MDB. RPT. No. 16030

S.S. Mwoa
MDB. RPT. No. 16055



© 2020

Lloyd's Register
Foundation

008559-008568-0091