

CONFIDENTIAL
SECURITY INFORMATION

CONFIDENTIAL

U.S. EYES ONLY

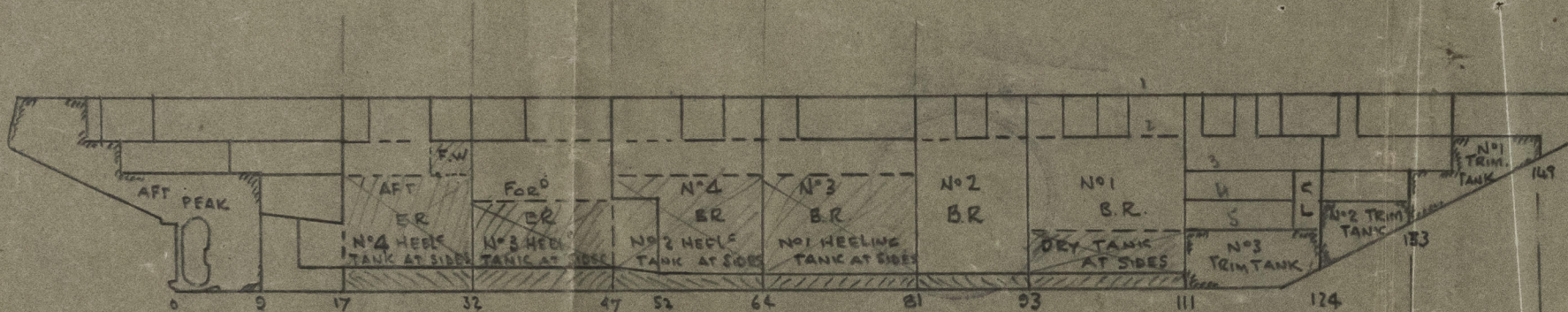
SECURITY INFORMATION

E.R.B. 4 Jan 52

L. KAGANOVICH

OUTLINE OF TANKS

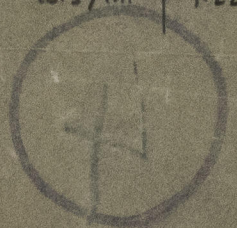
Handwritten: *Outline of tanks*



APT	N°6 DB	N°5 DB	N°4 DB	N°3 DB	N°2 DB	N°1 DB	7.93 m	5.49 m	9.15 m
14.49 metres	9.15 m.	9.15 m.	10.37 m.	10.37 m.	7.22 m	10.98			

CONFIDENTIAL

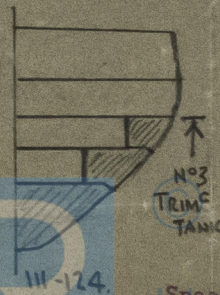
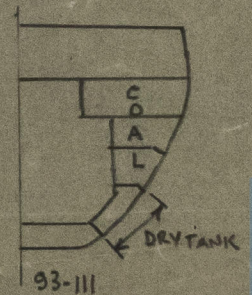
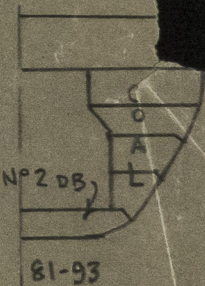
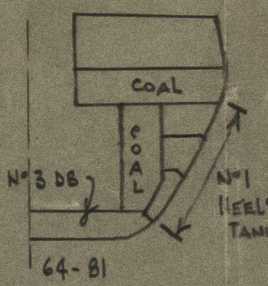
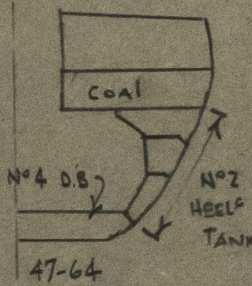
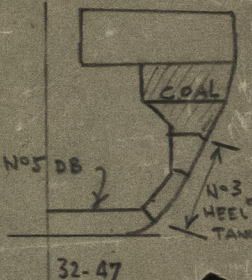
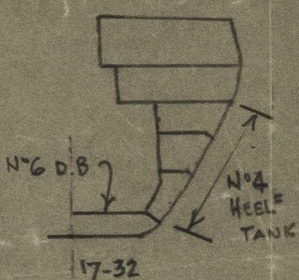
U.S. EYES ONLY



CONFIDENTIAL
SECURITY INFORMATION

CONFIDENTIAL

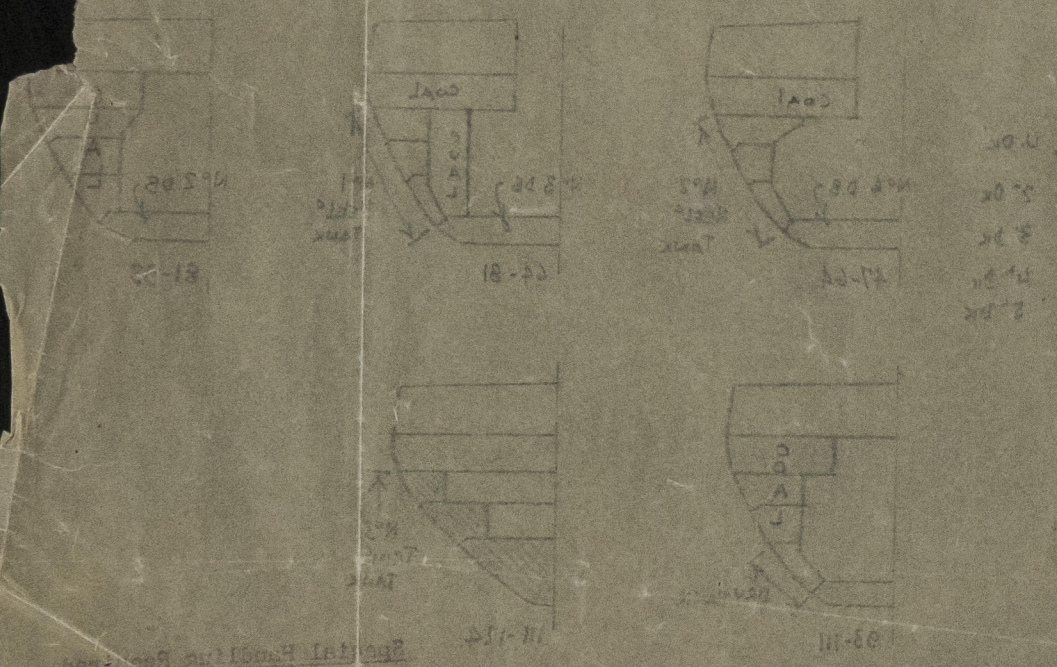
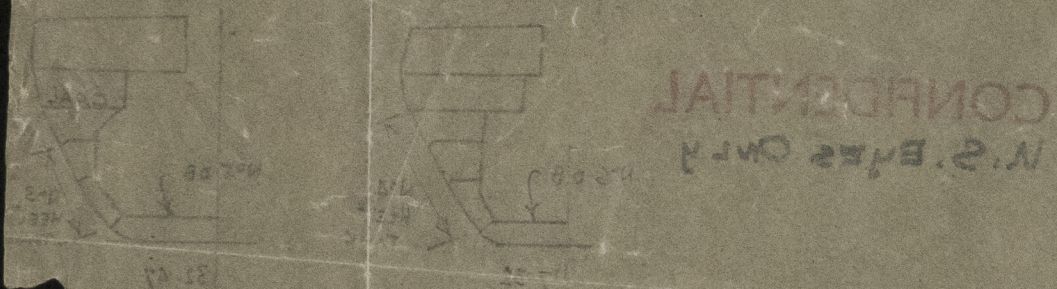
U.S. EYES ONLY



CONFIDENTIAL

U.S. EYES ONLY

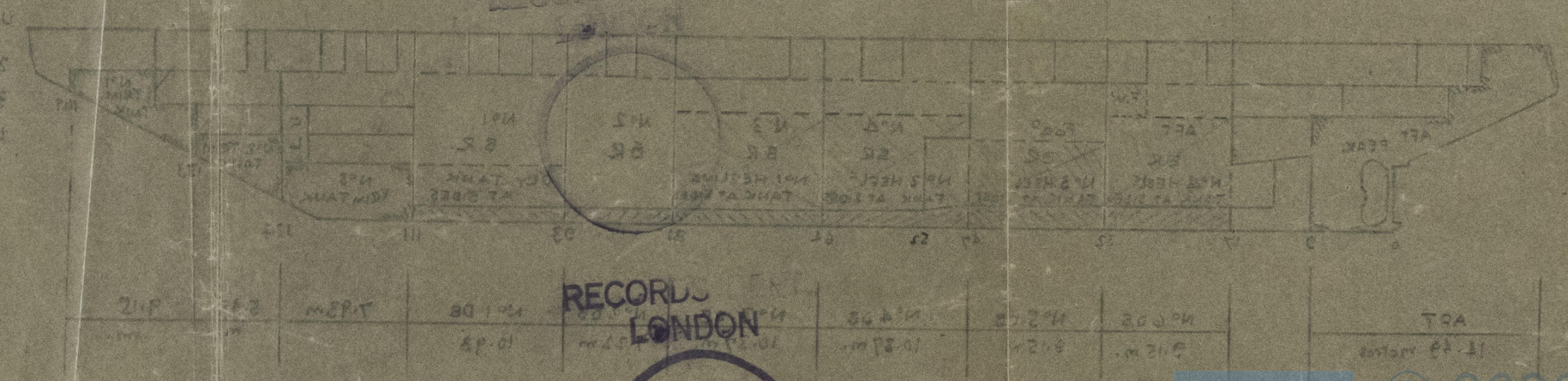
Special Handling Required
Not releasable to foreign
national without approval
of GNO (DNI).



CONFIDENTIAL
U.S. Eyes Only

"L. KAGANOVICH" ★

Outline of Tanks
Lon 119224.



4

CONFIDENTIAL
SECURITY INFORMATION

2900-895800-955800

CONFIDENTIAL
U.S. Eyes Only
SECURITY INFORMATION
6-13-40

"L. KAGANOVICH"
Outline of Tanks



© 2020
Lloyd's Register
Foundation

NO 1000000
57-11-15

CONFIDENTIAL
SECURITY INFORMATION

90286

62470