

15/7/26

MIDSHIP SECTION TWIN SCREW OIL TANKER.

PRINCIPAL DIMENSIONS	
LENGTH	116'-6"
BREADTH M ^{LD}	23'-0"
DEPTH M ^{LD}	11'-0 1/4" AS BUILT.

LLOYDS NUMERALS	
Lx(B+D)	3961
B+D	34
Lx D	1281.5
L/B	10.59
d	10

SCALE 3/4" = 1 FOOT

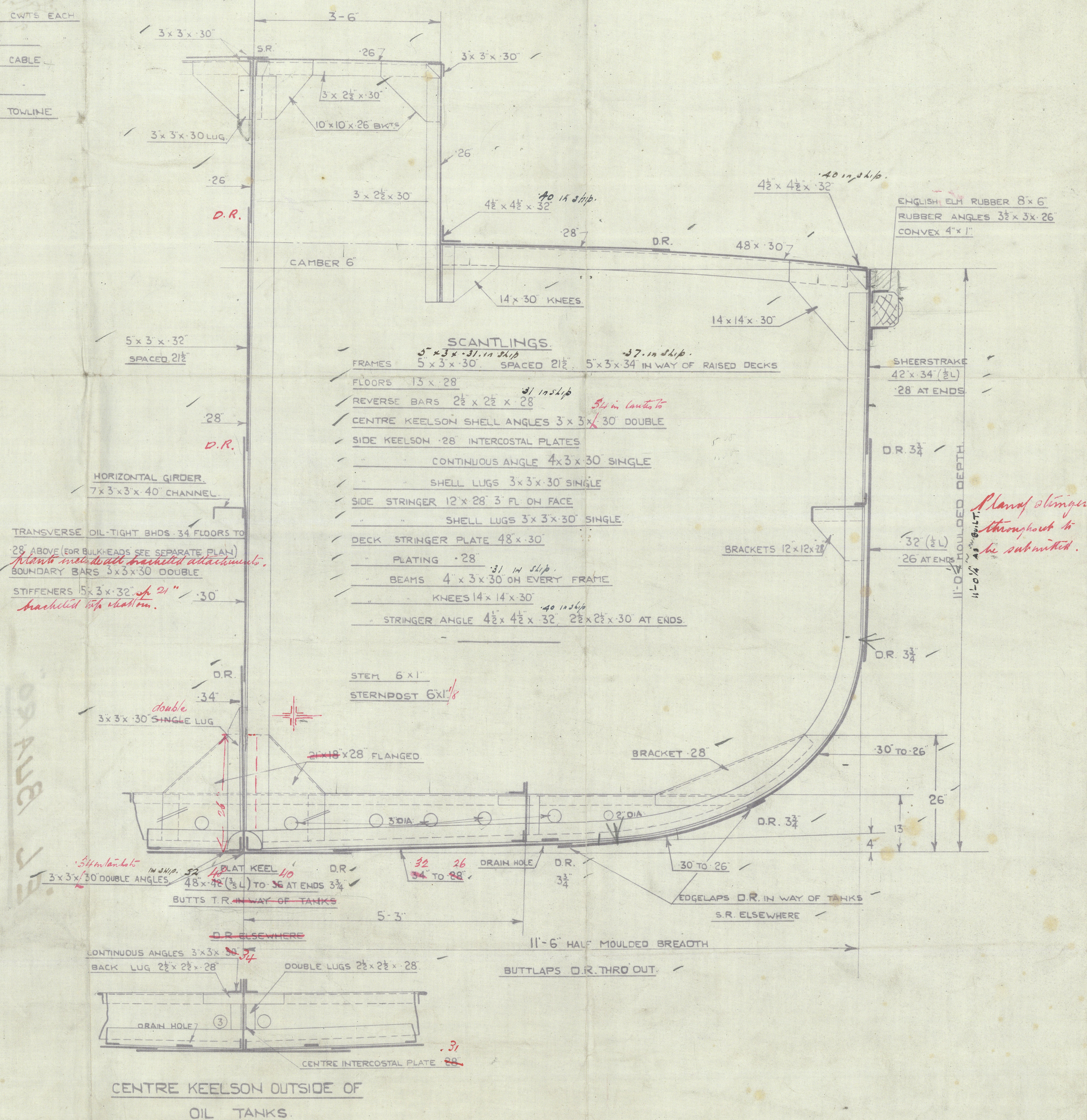
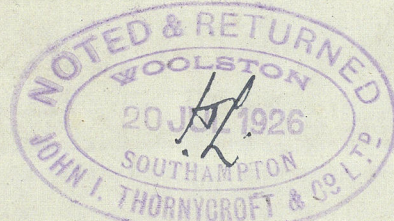
TO CLASS +100A1 *"Carrying Petroleum in Bulk"* AT LLOYDS

CARRYING CRUDE OIL & PETROL IN BULK FOR SERVICE BETWEEN GUAYAQUIL & ST ELENA (ECUADOR COAST)

EQUIPMENT TO OWNERS REQUIREMENTS 10% IN EXCESS OF LLOYDS

- 2 BOWER ANCHORS EX STOCK 5 1/2 CWTs EACH
- 1 STREAM ANCHOR 2 1/2
- 105 FATHOMS 3/8" STUD LINK CHAIN CABLE
- 45 8
- 75 2 1/2 STEEL WIRE ROPE TOWLINE
- 30 4 HEMP HAWSER

Rule Equipment Table 53.



1062.

13. 7. 26.

469 / 26.

EL BUARO

Tw. Sc. Motor oil
Tanker.

Nº 1062.

Messrs John I. Thornycroft
& Co. LTD.
Soton.

MIDSHIP SECTION.

Approved PLAN.



© 2021

Lloyd's Register
Foundation

008550-008558-0256

~~Profile~~

~~"EL BUARO"~~

J. P. Thompson No 1062

T. S. M. Tanker

MIDSHIP Section.

10 p.m. 1915
L.S.M. 2

Southampton
9/1/26
P. A. D.

008550-008558-0256



© 2021

Lloyd's Register
Foundation