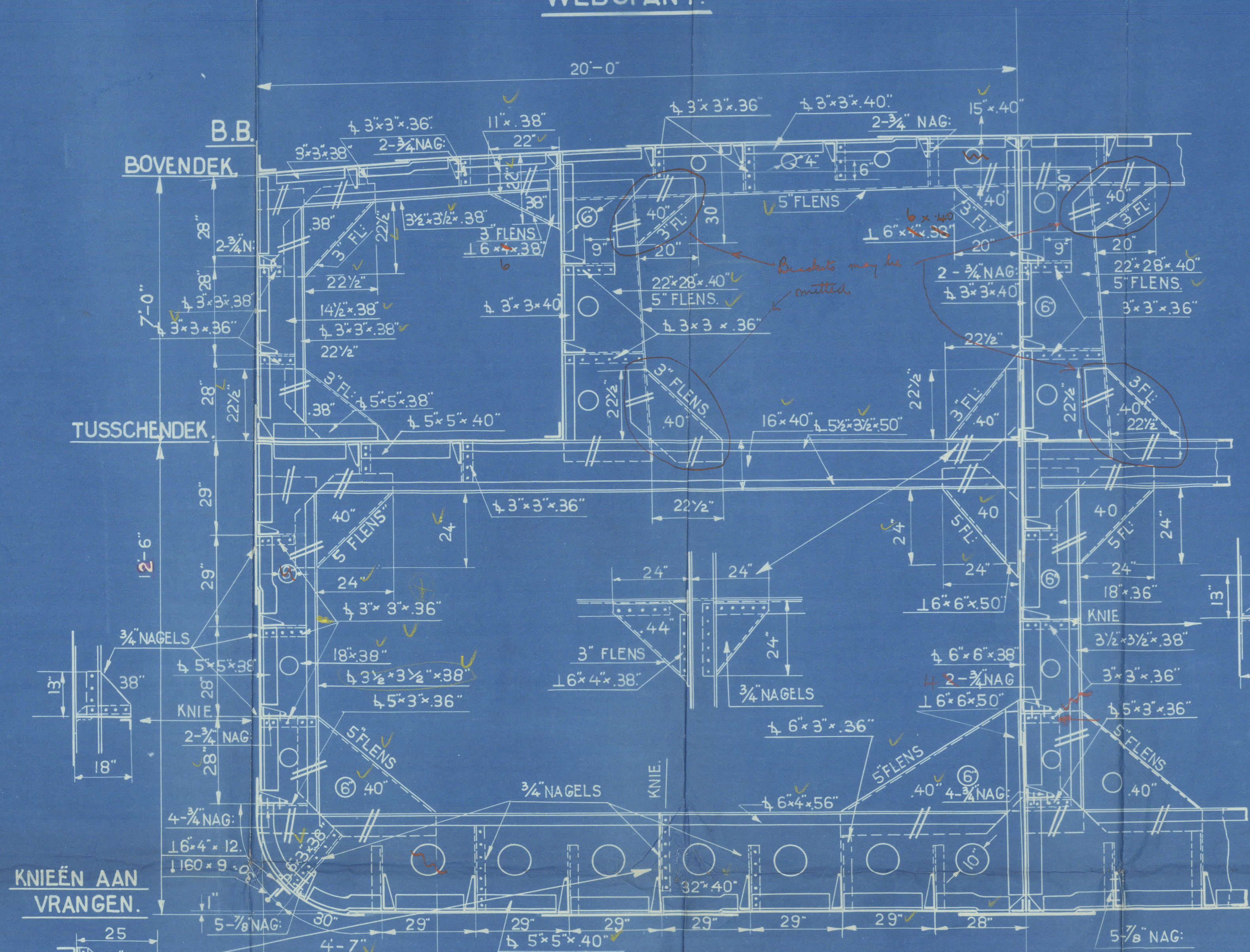


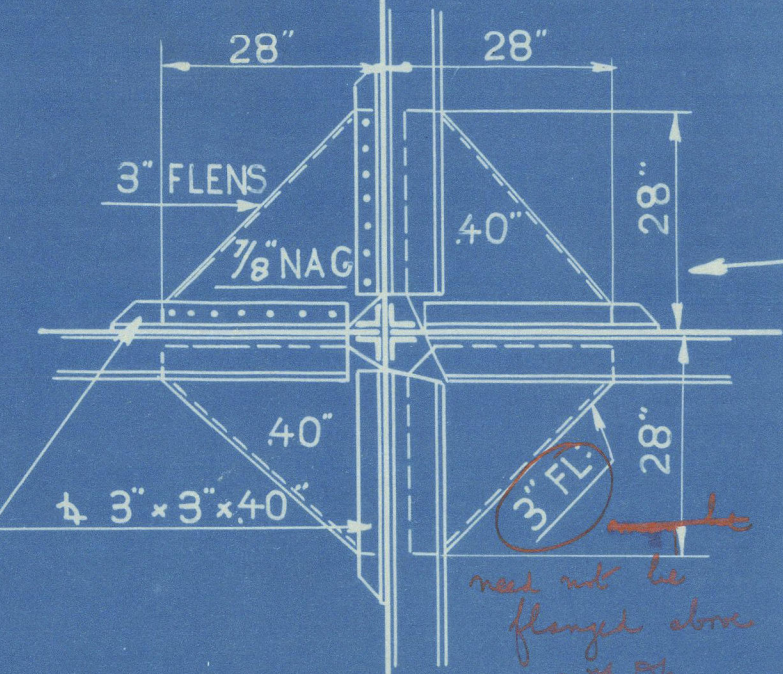
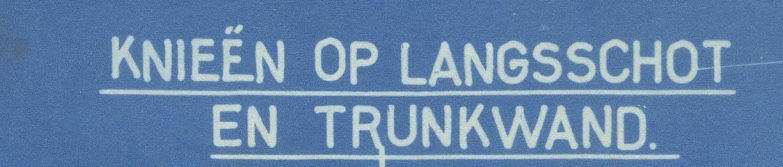
TANKSTOOMSCHIP. S.S. № 165.

SCHAAL $\frac{1}{2}'' = 1' - 0''$

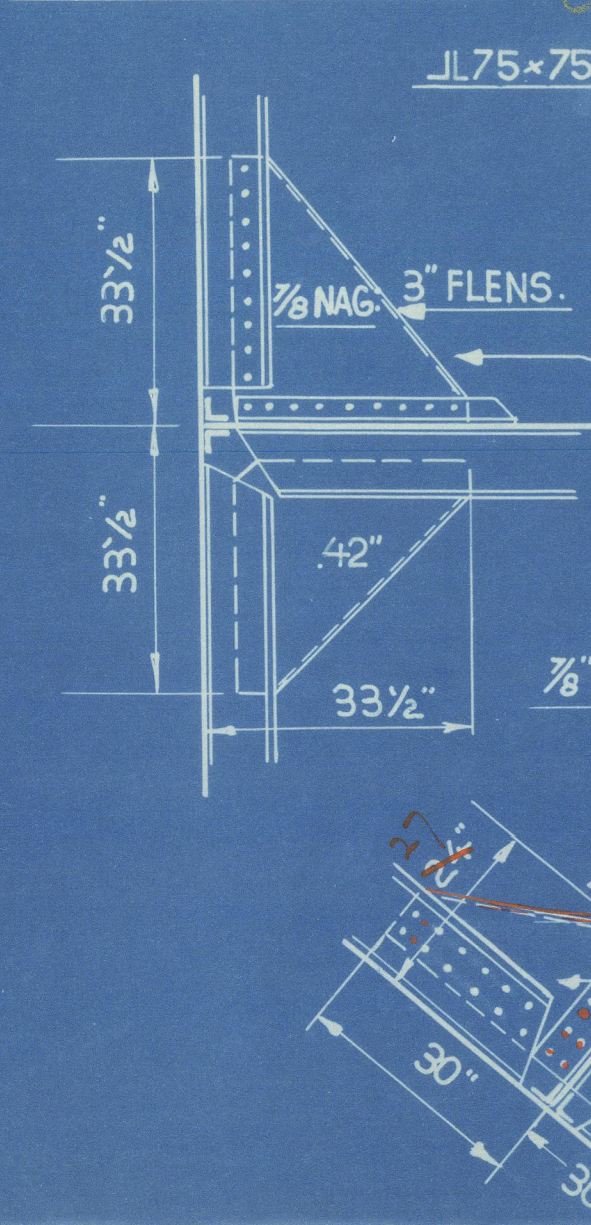
WEBSpanT.



O. D. DWARSSCHOT.



KNIEËN AAN HUID.



GROOTSPANT.

KLAS LLOYDS +100 A I

CARRYING PETROLEUM IN BULK

LONGITUDINAL FRAMING IN CARGO TANKS

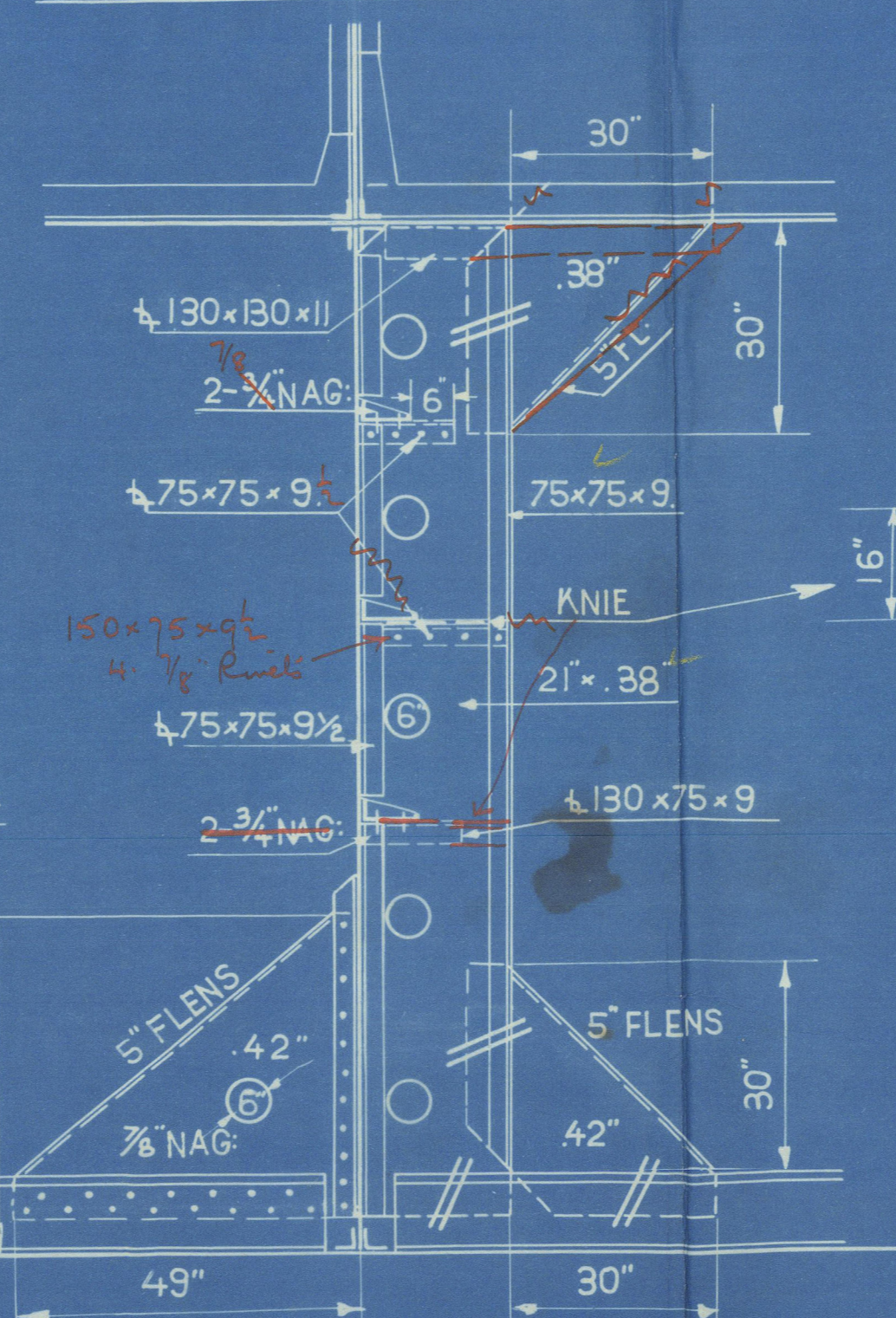
HOOFDAFMETINGEN.

LENGTE TUSSEN DE LOODLIJNEN	235'- 0"
BREEDTE OVER BUITENKANT SPANTEN	40'- 0"
HOLTE TOT BOVENDEK IN DE ZIJ	19'- 6"
" " TUSSENDEK " "	12'- 6"
HOOGTE BAK BRUG EN KAMPANJE	7'- 6"

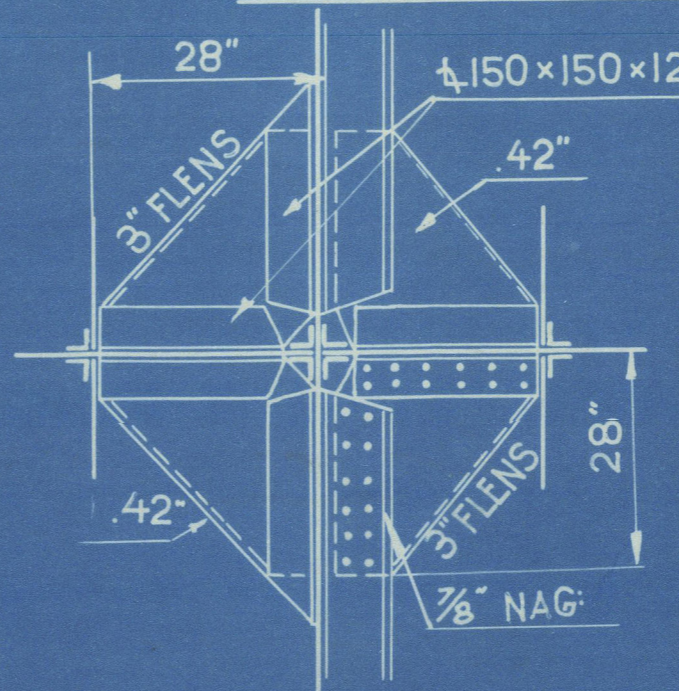
LLOYD'S NUMMERS.

$L \times D$	$=$	$235 \times 19,5$	$=$	4582
$L \times [B+D]$	$=$	$235 [40+19,5]$	$=$	13982
D	$=$	19,5		
$\frac{L}{D}$	$=$	12		

WEB TER PLAATSE VAN TRUNKWAND.



ONDERSTE KNIE AAN DWARSSCHOT
OP HART- SCHIP.



UITRUSTINGNUMMERS.

2 ^E LANGSNUMMER	L x [B + D]	=	13982
BAK	18 1/4 x 7 1/2 x 3/4	=	103
BRUG	32 x 7 1/2 x 3/4	=	180
KAMPANJE	64 3/4 x 7 1/2 x 3/4	=	364
KOEL KAST + KOMBUIJS	46 x 4 1/2 x 1/2	=	103
DEKHUIS OP BRUGDEK	25 x 7 1/2 x 1/2	=	94
	NUMMER	=	14826

UITRUSTING.

3	BOEGANKRERS (STOKLOOS)	TOTAAL GEWICHT	87 C.W.T.
1	STROOMANKER INCL. STOK	"	9½ "
240	VADEM DAMKETTING	1½ " $\frac{1}{2}$	3 19½ "
75	" STAALDRAAD	3½ " OMTREK	
90	"	3½ "	
2 x 90	"	2½ " "	
2 x 90	"	1¾ "	

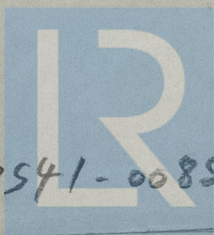
S.S.Nº 165. GROOT SPANT.

R.D. Dr. 165
Selling
London

SEN. BOX NO. 2
H.E.

S.S. "Socombel"

SEN. BOX NO. 2



© 2020

Lloyd's Register
Foundation

008541-008549-0063