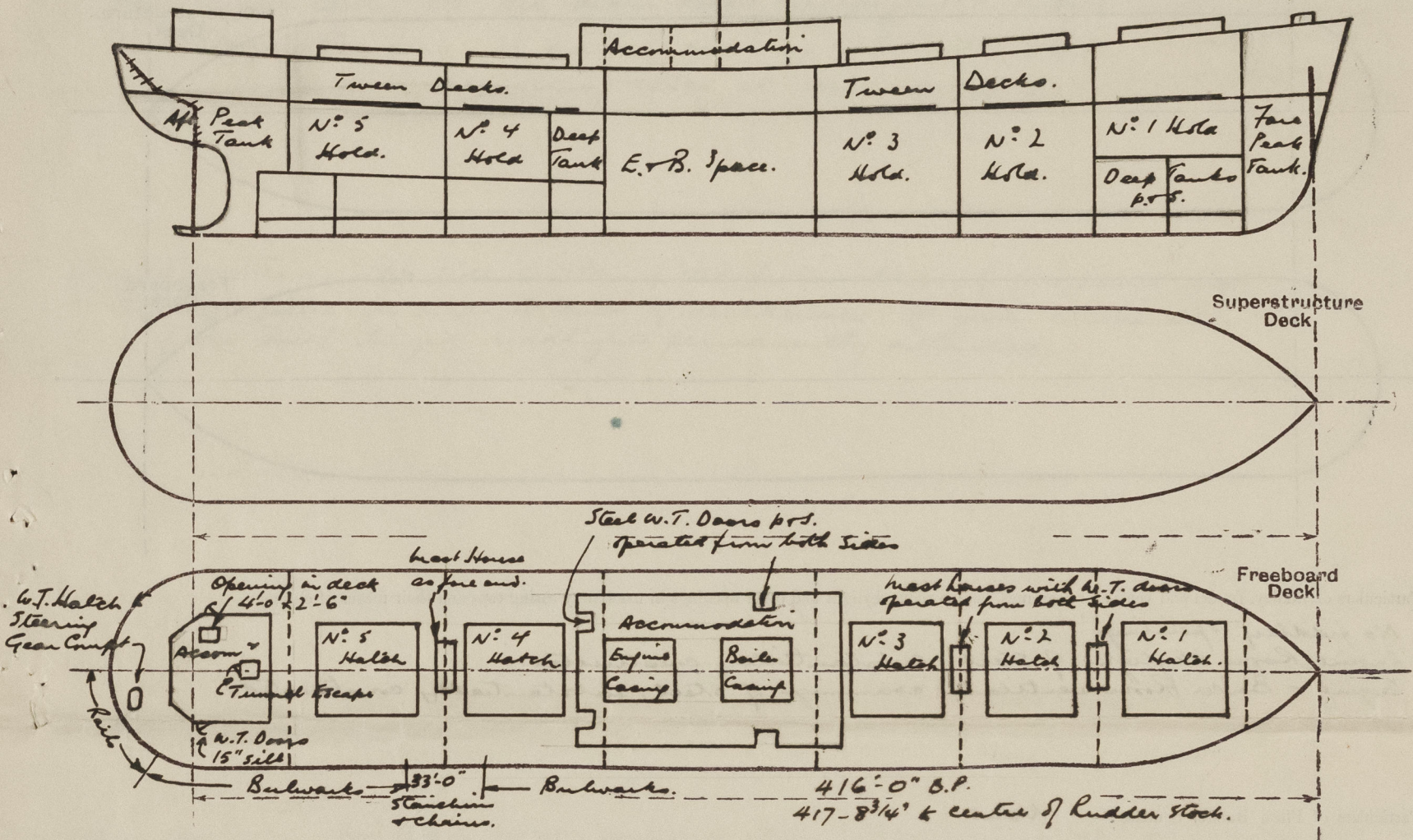


Lloyd's Register of Shipping.
SURVEYS FOR FREEBOARD.
(CONDITIONS OF ASSIGNMENT.)

2-DEC 1947

Ship's Name "SPRINGBANK" (ex "Samspelga") Port of Survey Hull.
Official Number 180550 Surveyor's Signature J. A. Beasley.
Nationality and Port of Registry British-London. Date of Survey October/November 1947.

Disposition and dimensions of superstructures, trunks, deckhouses and machinery casings to be inserted in the diagrams and tabular statement: --



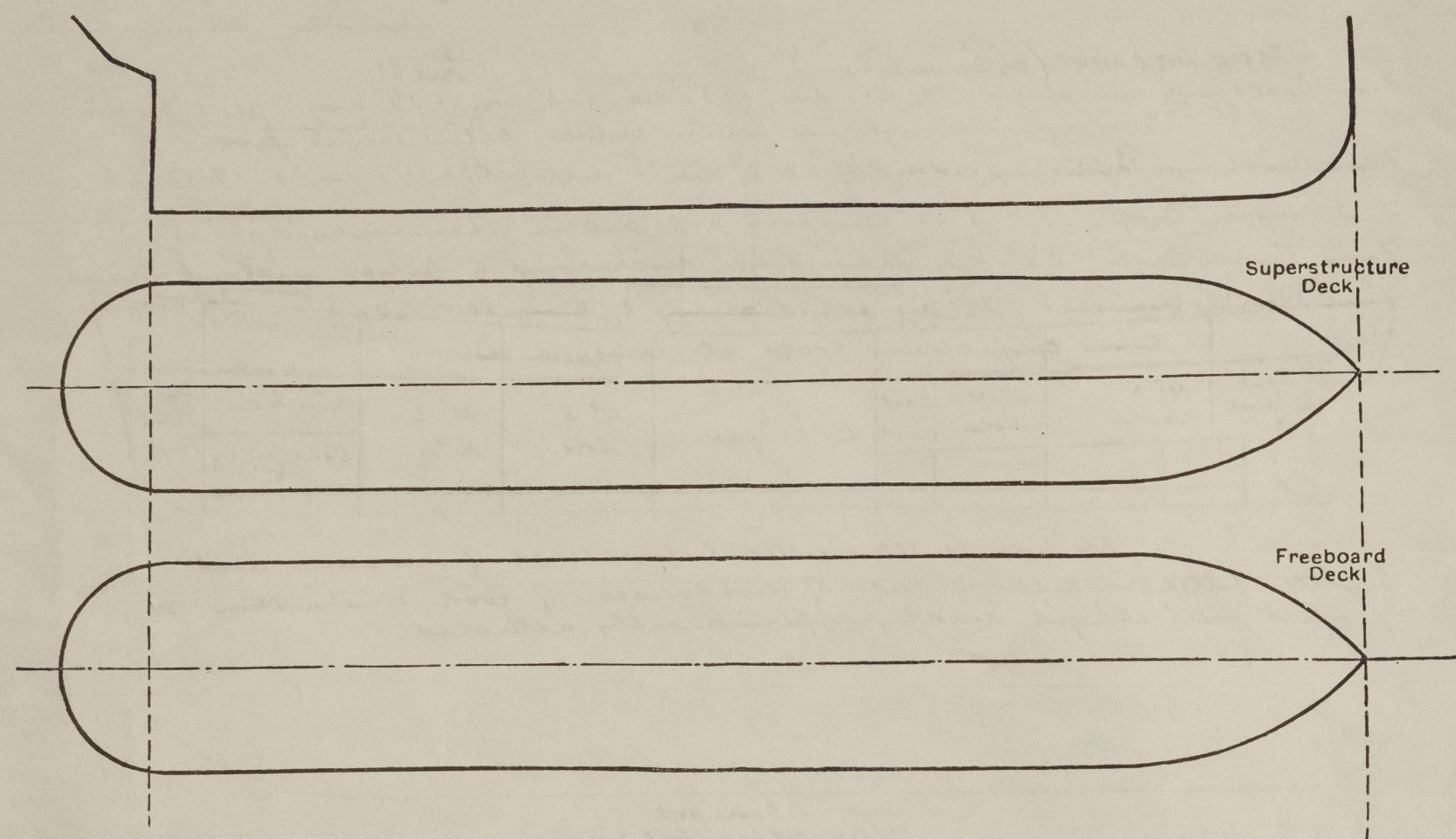
Particulars of Superstructures, Trunks, Casings, Deckhouses.								
	Coaming	Plating	Stiffeners	Spacing	End Attachments of Stiffeners	Size of Openings	Height of Sills	Height of Casings
Poop Bulkhead ...	✓							
Raised Quarter Deck Bulkhead ...	✓							
Bridge, After Bulkhead ...	✓							
Bridge, Forward Bulkhead ...	✓							
Forecastle Bulkhead ...	✓							
Trunk, Aft ...	✓							
Trunk, Forward ...	✓							
Exposed Machinery Casings on Freeboard or Raised Quarter Decks ...	✓							
Exposed Machinery Casings on Superstructure Decks ...	✓							
Machinery Casings within Superstructures not fitted with Class I Closing Appliances ...	FOR? AFT	-44 -375"	6x4x7/16 L ON TOE 4x3x7/16 L ON TOE	30" 30"	E.W. FOOT. BKTS AT TOP. none	2 @ 60"x 30" 1 @ 51"x 20"	15" 21"	
Deckhouses on Flush Deck Ships ...								

Particulars of Closing Appliances (state if capable of being manipulated from both sides).

Poop Bulkhead ...	✓
Raised Quarter Deck Bulkhead ...	✓
Bridge, After Bulkhead ...	✓
Bridge, Forward Bulkhead ...	✓
Forecastle Bulkhead ...	✓
Exposed Machinery Casings on Freeboard or Raised Quarter Decks ..	✓
Exposed Machinery Casings on Superstructure Decks ...	✓
Machinery Casings within Superstructures not fitted with Class I Closing Appliances ...	✓
Deckhouses on Flush Deck Ships ...	Hinged steel w.T. Doors at all openings, capable of being manipulated from both sides

PARTICULARS OF PROTECTION TO OPENINGS, ETC.

The following diagrams should be used to indicate the positions of cargo and coaling hatchways, gangway, cargo and coaling ports, ventilators, companionways, etc., which would affect the seaworthiness of the ship:—



Particulars of fiddle, funnel and ventilator coamings, engine room skylight and other openings in machinery casing tops and their means of closing:—

No fiddle openings
Engine Room skylight of steel, substantially constructed.
Engine & Boiler Room ventilator coamings of steel, substantially constructed.

Particulars of Flush Bunker Scuttles:— None.

Particulars of Companionways:— Access to Hold through mast houses, substantially constructed of steel with hinged steel w.t. doors, 4'0" x 2'2" opening x 15" sill, operated from both sides.
Access to Steering gear flat through after deckhouse of substantial construction with hinged steel w.t. doors 5'0" x 2'2" opening x 15" sill, operated from both sides. Access to Tunnel Escape also opens into after deckhouse.
Companionway to Forward Store substantially constructed of steel, with hinged steel w.t. door 4'9" x 2'2" opening x 15" sill, operated from both sides.

Particulars of Ventilators in exposed positions on freeboard and superstructure decks:—

Freeboard Deck:
To Forward Store 2 @ 8" dia x 36" coaming
" Magazine forward 1 10" " x 10'6" "
" N° 1 Hold. 2 24 " x 36 " "
" N° 3 " 2 15 " 11'0" "
" Dry Store S.S. 1 12 " " "
" N° 5 Hold 2 24 " x 36 " "
" Crosspace aft 2 10 " x 6'0" gorsewicks.
" Magazine aft. 1 9 " x 36 coaming.
" Steering Gear compartment 2 9 " " "
" Hold & Tween decks on mast house tops 6 @ 30" dia x 36" coaming.
Boat Deck:
To N° 4 Hold 2 @ 21" dia x 36" coaming
" E & B. Room 2 20 " " "
" Accommodation 2 15 " " "

Efficient closing appliances provided for all ventilator coamings.
Coamings exceeding 36" in height suitably stayed.

Particulars of Air Pipes in exposed positions on freeboard, raised quarter, or superstructure decks:—

Freeboard Deck:
To Forepeak Tank 1 @ 3 1/2" dia x 32' heights.
" Deep Tanks forward 4 5" " 30" " with return pipe led overboard thro' N.R.V. in Tween deck
" N° 3 Deep Tank. 2 5 " " " ditto.
" N° 1 & 6 O.B. Tanks & settling tanks 10 2 1/2 " " "
" N° 2, 3 & 5 O.B. Tanks 12 3 " " "
" N° 4 (R.F.) " 2 1 1/2 " " "
" N° 2 Cofferdam 2 2 1/2 " " "
" Void space 2 2 1/2 " " "
" Aft Peak Tank 1 3 1/2 " " "

Efficient closing appliances are provided for all air pipes.

Particulars of Gangway Cargo and Coaling Ports:—

None.

Springbank.

Particulars of Scuppers and Sanitary Discharge Pipes:—

From Deck house amidships: S.S. 2-5" dia, 1-3 1/2" dia, 1-3" dia, 1-2 1/2" dia; p.s. 1-3 1/2" dia discharging through am-return valves below second deck.
From Deckhouse aft: p.s. 1-4" dia, 1-2" dia ditto.
From Upper Deck: 17-5" x 2" scuppers p.s. cut in sheathings.
From Tween Decks: 2 1/2" dia drain pipes discharging to bilges without means of closing.
From Steering Gear flat: 2 1/2" dia p.s. draining to tunnel well with self-closing cocks at lower ends.

Particulars of Side Scuttles:—

No side scuttles fitted below level of freeboard deck.
Scuttles fitted in sides & ends of deckhouses, of good construction fitted with hinged deadlights permanently attached.

Vertical distance of Sill of lowest Side Scuttle above top of keel.

Particulars of Guard Rails:—

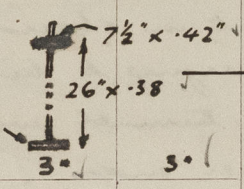
On upper deck: around stern abaft frame 77, 3'6" high - 3 rails on stanchions 5'0" apart.
3 guard chains fitted abreast N° 4/5 masthouse (see sketch) stretching screws?

Particulars of Gangways, Lifelines, etc.:—

Lifelines provided fore and aft.

Particulars of Freeing Arrangements.						
	Length of Bulwark	Height of Bulwark	Size of Freeing Ports	Number each side	Area each side	Rule area each side
After Well ...	See sketch	3'6"	4'9" x 9"	19	67.6 sq. ft.	58.5 sq. ft.
Forward Well ...						
State position of each freeing port ... At frames 116, 128, 142, 167, 173. (F. and A. position and height above deck edge) Amidships: 85, 88, 94, 102, 107. Forward Well: 80, 75, 72, 66, 62, 58, 50, 40, 32 } 6" above deck.						
State whether the freeing ports are fitted with shutters, bars, or rails, and give particulars of such:— No shutters, bars or rails.						
Additional area where sheer is less than standard.						

PARTICULARS OF PROTECTION TO OPENINGS, ETC.

HATCHWAYS ON FREEBOARD AND SUPERSTRUCTURE DECKS.									
Description of Hatchway	N ^o 1	N ^o 2	N ^o 3	N ^o 4	N ^o 5	Hatch 6 Fore Peak	Hatch 6 Steering Gear Chk.
Dimensions of Hatchway	35'9" x 20'	35'0" x 20'	20' x 20'	35'0" x 20'	35'0" x 20'	3' x 3'	15" x 23"
COAMINGS	{	Height above Deck	36"	36				18"	15"
		Thickness	.625					.375	.375
		Sides	.625						
		Ends	.625						
Stiffeners	...	12 x 4 x 75" BA							
Brackets, Stays	...	3 x 3 x .50" L - 4'-6" apart.							
HATCH BEAMS	{	Number	6	6	3	6	6		
		Spacing							
		Scantling and Sketch							
		Bearing Surface	3"	3"	3"	3"	3"		
FORE AND AFTERS	{	Number							
		Spacing							
		Unsupported Lengths							
		Scantling* and Sketch							
Bearing Surface	...								
HATCH COVERS	{	Material	wood					Steel hinged	
		Thickness	3 3/4"					W.T. Covers	
		How fitted	F&A					Secured by	
		Bearing Surface	3"					toggles & wingnuts.	
Spacing of Cleats	...	24"							
Number of Tarpaulins	...	Three					✓	✓	
*Are wood fore and afters steel shod at all bearing surfaces?			None						
Are battens and wedges efficient and in good condition?			Yes. ✓						
Are tarpaulins in good condition and in accordance with rule requirements?			Yes. ✓						
Are lashings provided in accordance with rule requirements?			Yes. ✓						

Particulars of any special features :—

Endorsement at first survey and at surveys for renewal of Certificate :—

The fittings and appliances are in accordance with the particulars shown on this form (or as now modified) and are in good condition.

1212

