

NUCULANA^Y
Nº 649 SHIP
STERN FRAME.

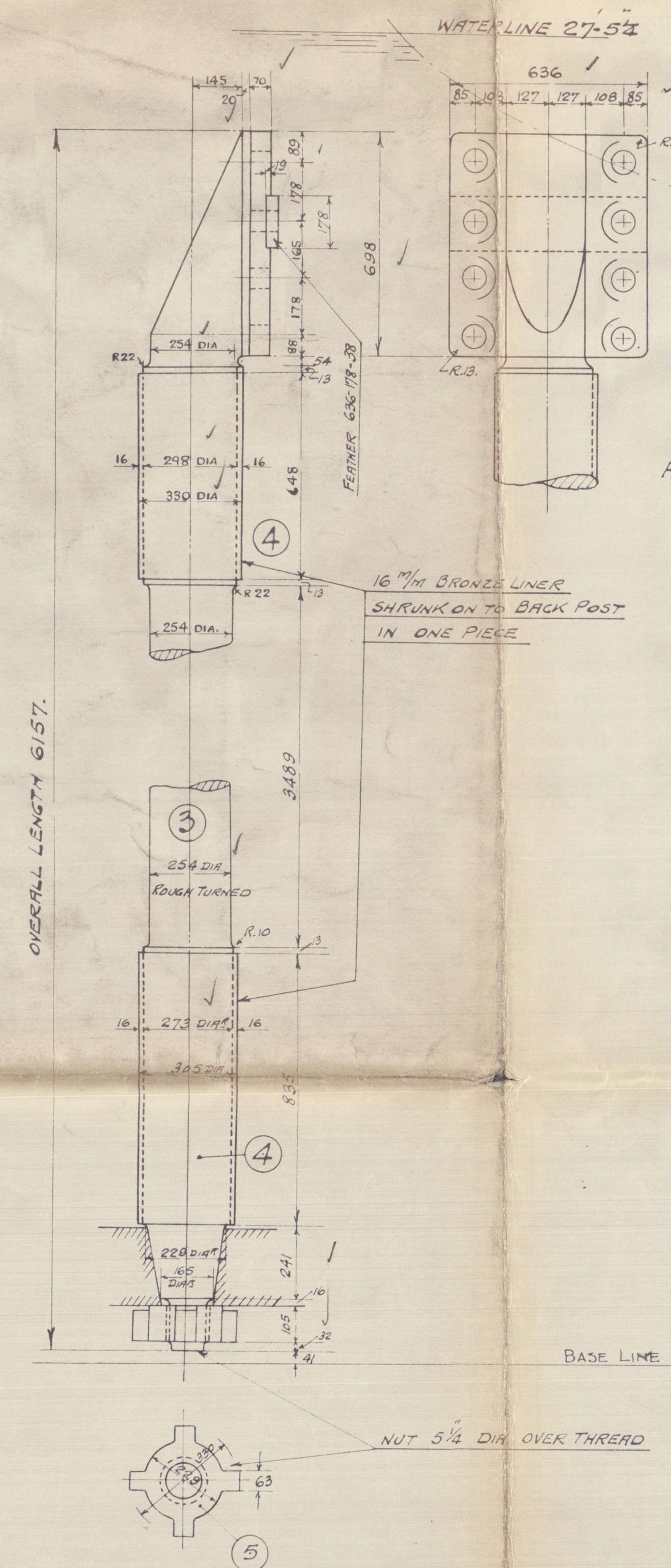
PARTICULARS

LENGTH	=	460' - 0"	✓	=	140' 21 M
BREADTH	=	59' - 0"	✓	=	17 98
DEPTH	=	34' - 0"	✓	=	10 36
WATERLINE	=	27' - 5 1/4"	✓		
SPEED	=	12 KNOTS	✓		
RUDDER AREA	=	180' G	✓		
L x D	=	156+0	✓		
A x D	=	387	✓		
RUDDER ANGLE		MAXIMUM		=	35°

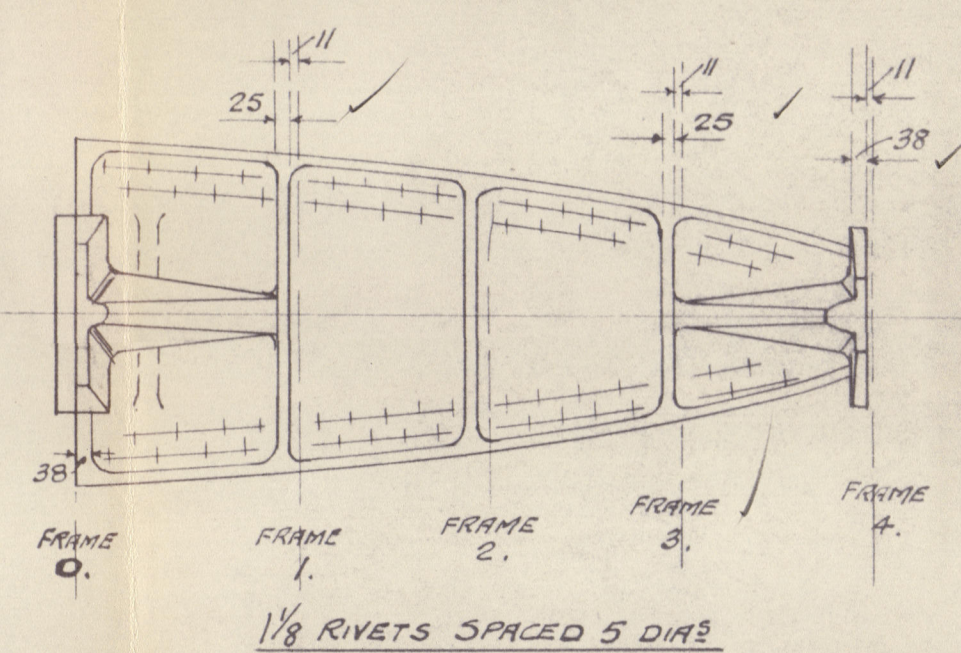
NOTES

TO PASS LLOYDS TESTS AND REQUIREMENTS
RUDDER POST SQUARE TO BASE LINE
BOTH PORTIONS OF STERN FRAME & RUDDER BACK POST
TO BE ASSEMBLED AND FITTED TOGETHER AT MAKERS WORKS.
BEFORE BEING DESPATCHED
DRILLED FOR RIVETS WHERE INDICATED TO SPACINGS SHOWN ON PLAN
PROPELLES BOSS CAST TO ROUGH BORE
THROUGH RIVER HOLES TO BE BORED PLUMB THROUGH POST
DIMENSIONS ON THIS PLAN MUST BE CAREFULLY WORKED TO
AS ANY EXCESS OVER ESTIMATED WEIGHT WILL NOT BE PAID FOR

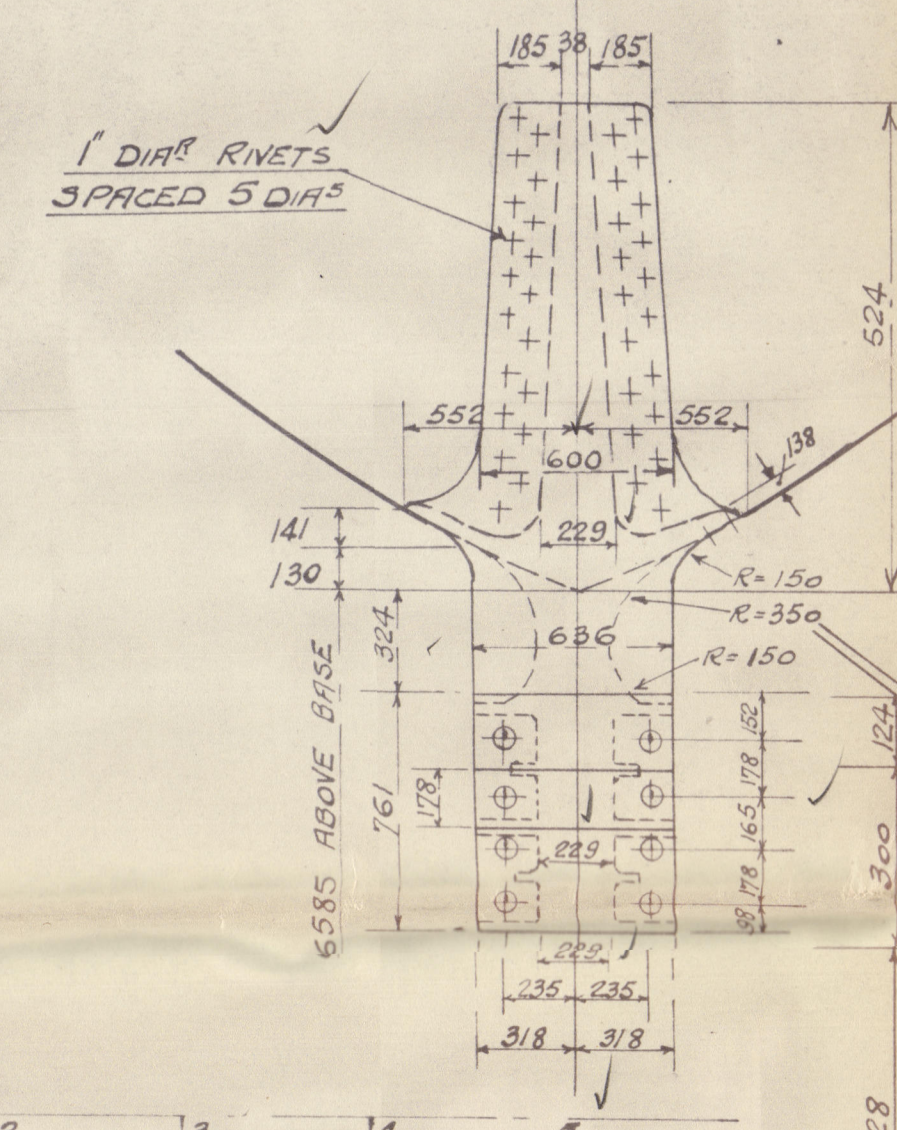
RUDDER BACK POST



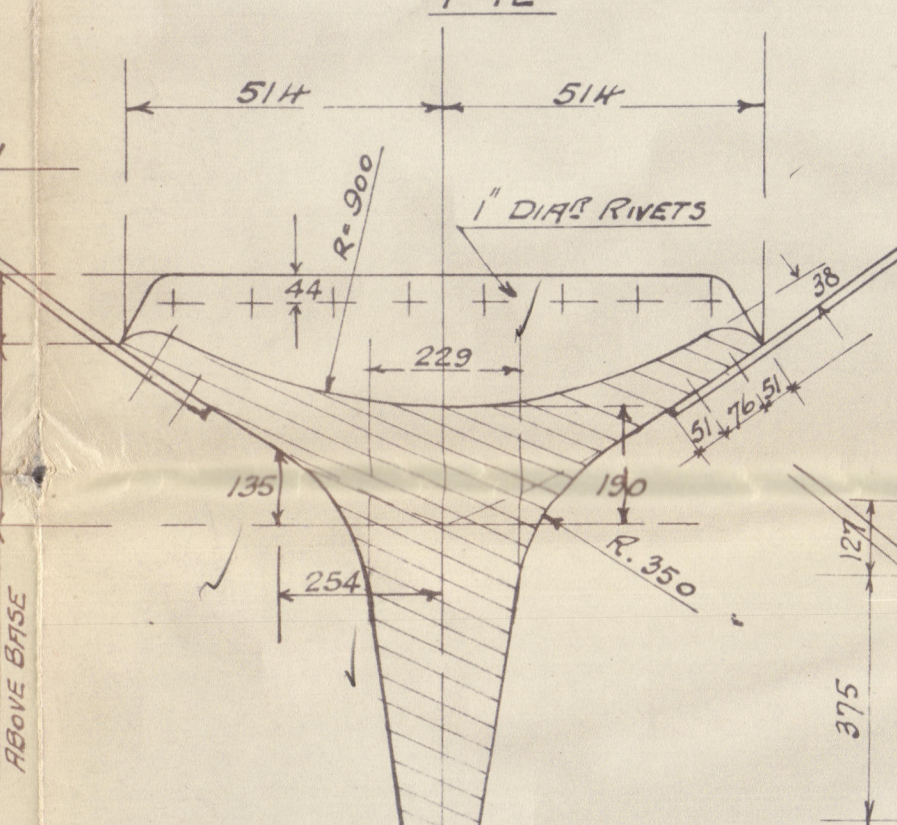
STERN FRAME TOP



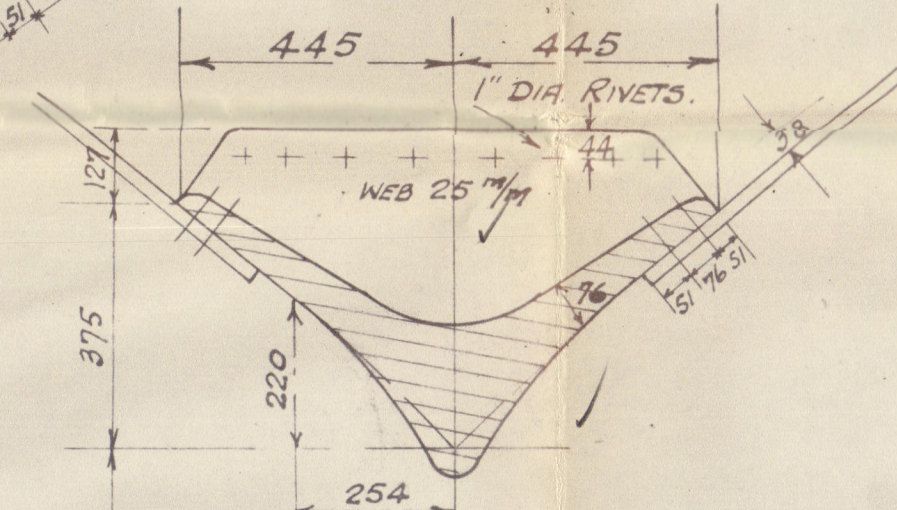
FRAME N° 0
(LOOKING FORWARD)



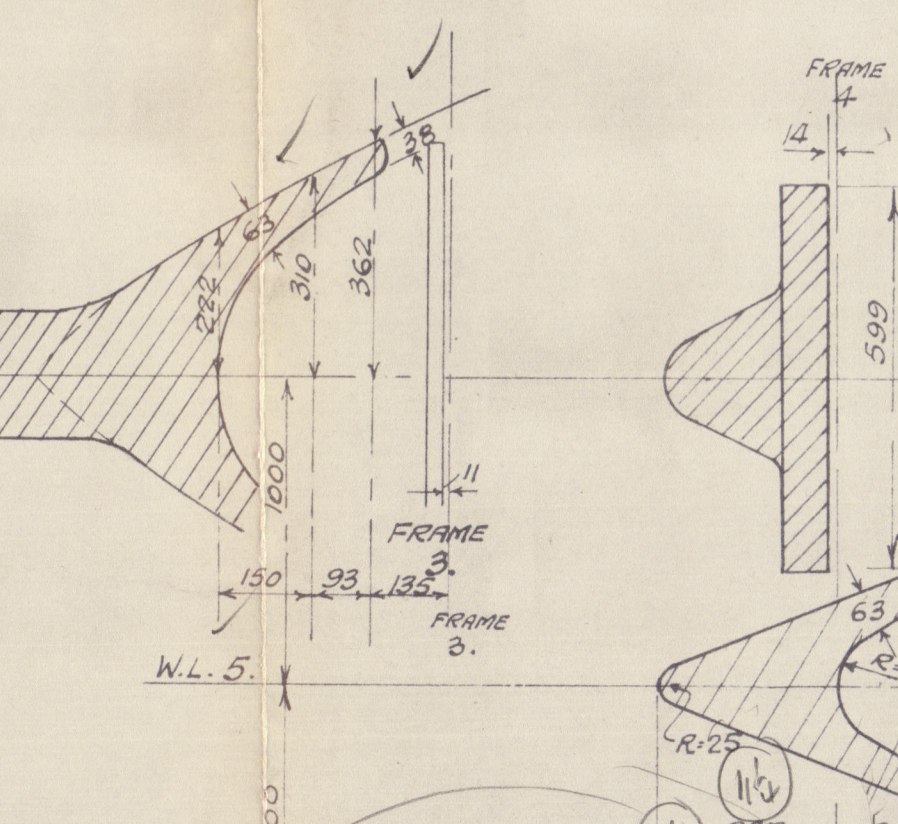
SECTION, FRAME 1
1-12



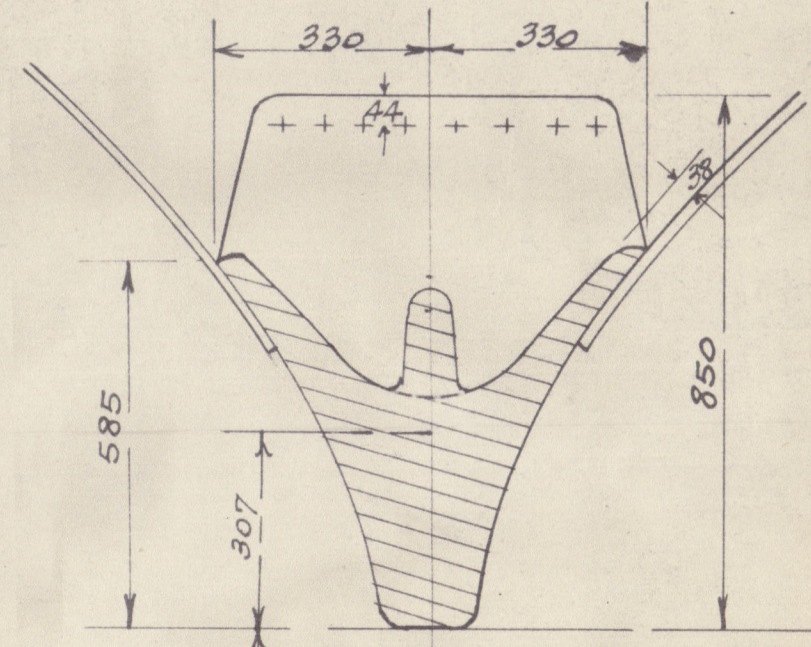
SECTION, FRAME 2
1-12



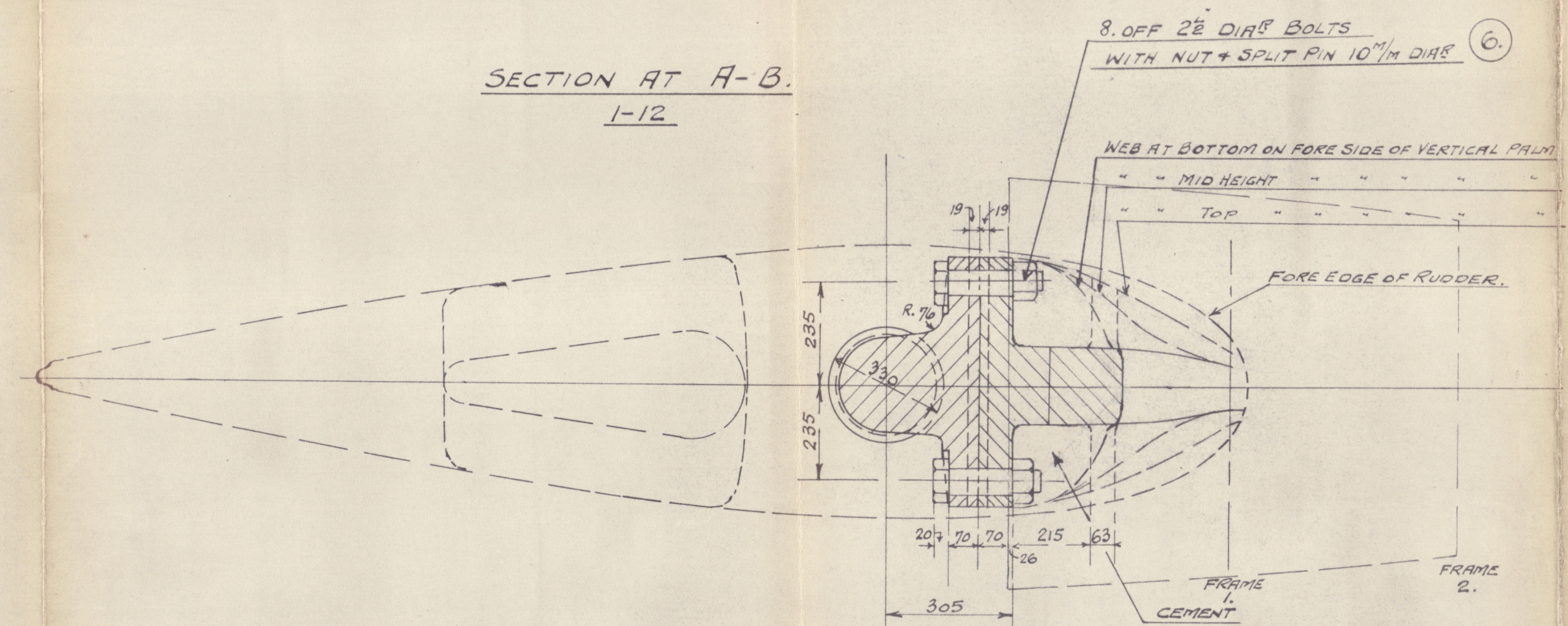
SECTION AT WL. 6.
1-12



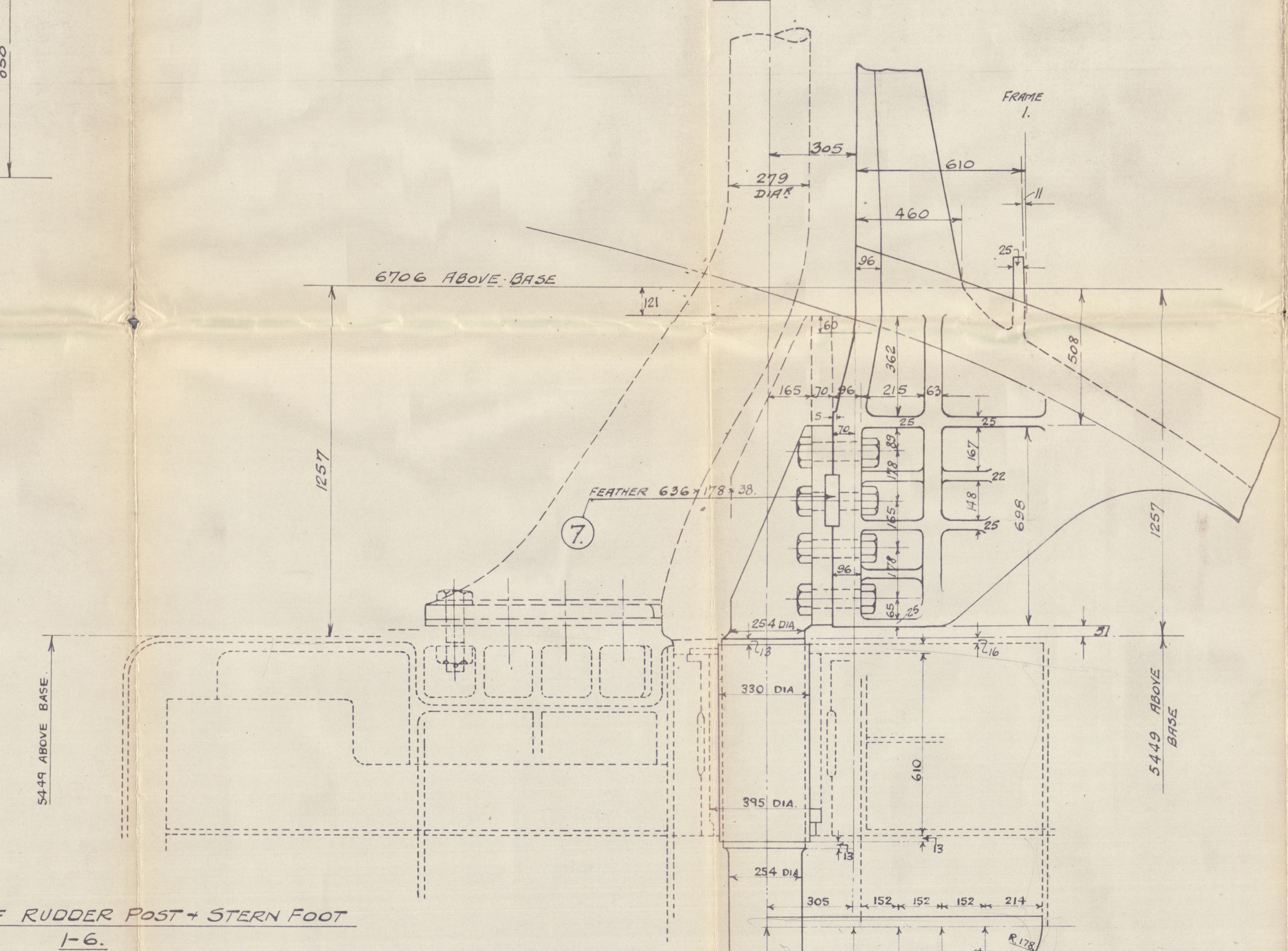
SECTION FRAME 3
1-12



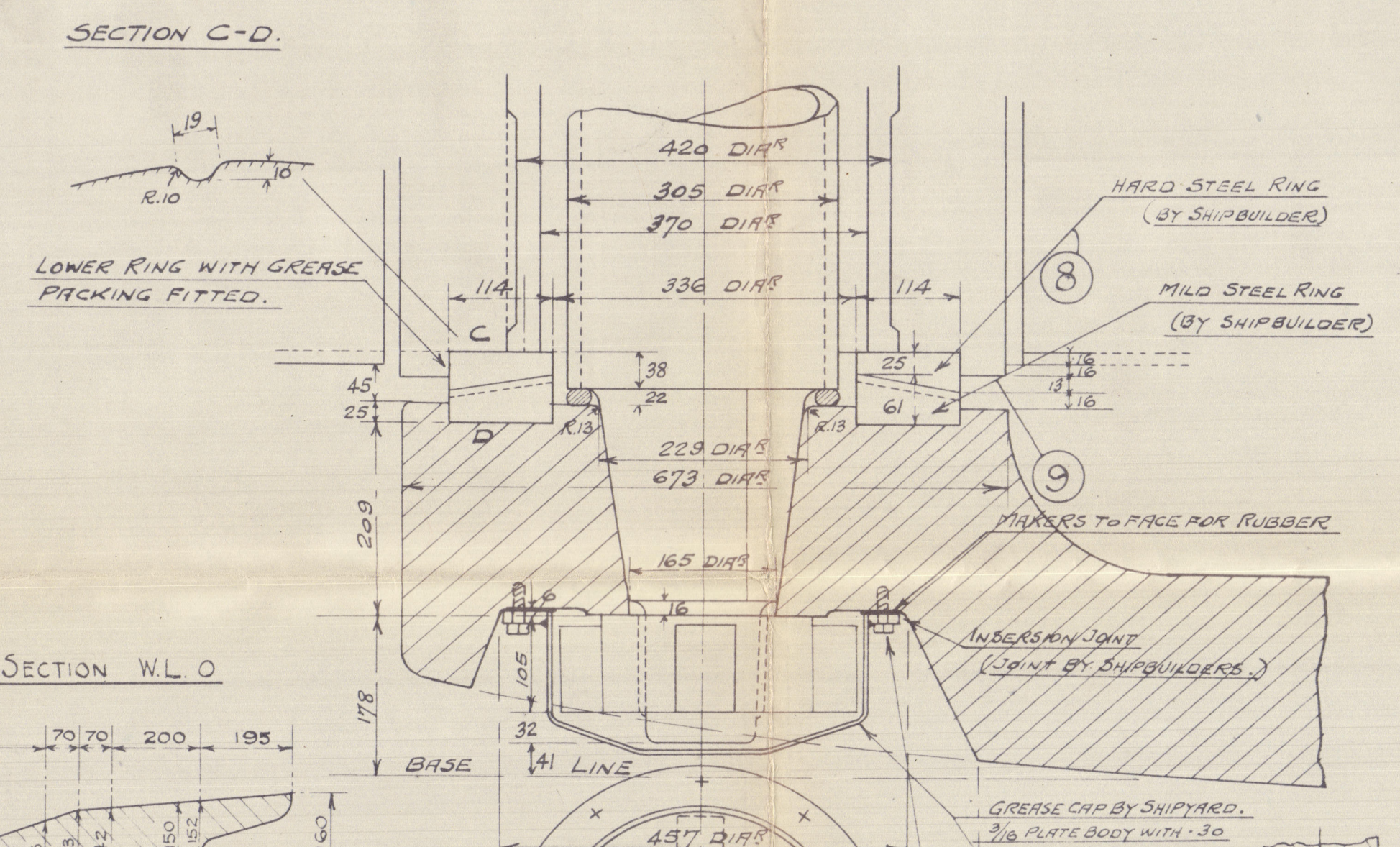
SECTION AT A-B.
1-12



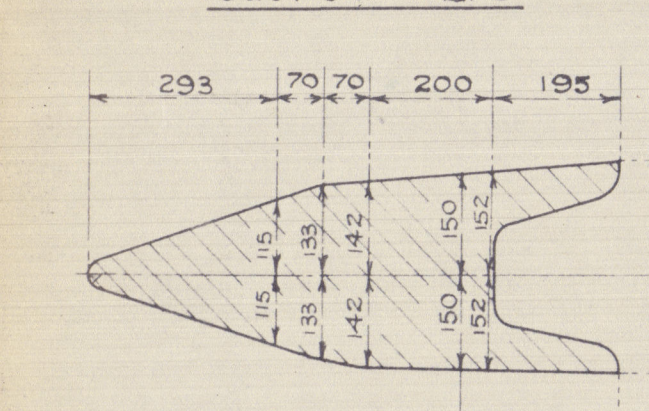
COUPLING OF RUDDER AND STERN FRAME.
1-12



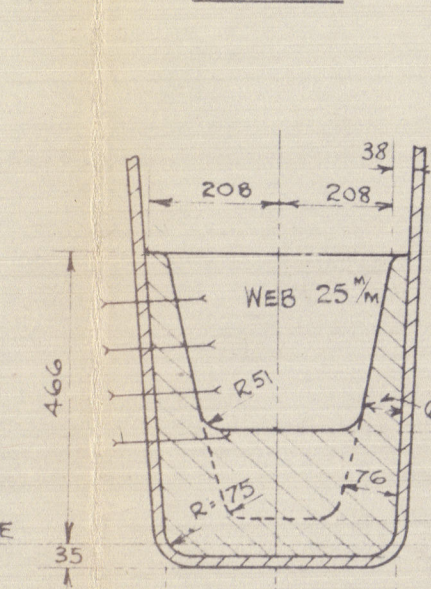
DETAIL OF RUDDER POST + STERN FOOT
1-6.



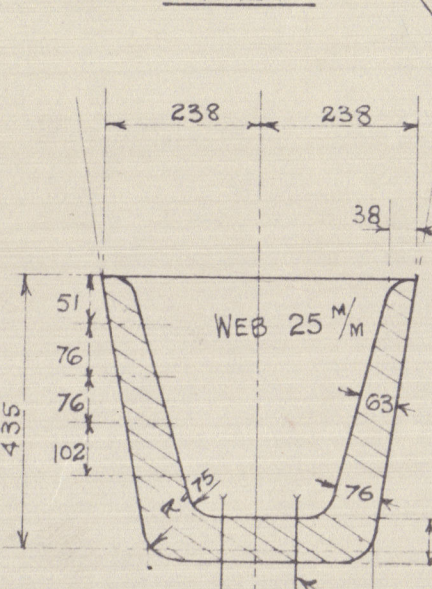
SECTION W.L.O.



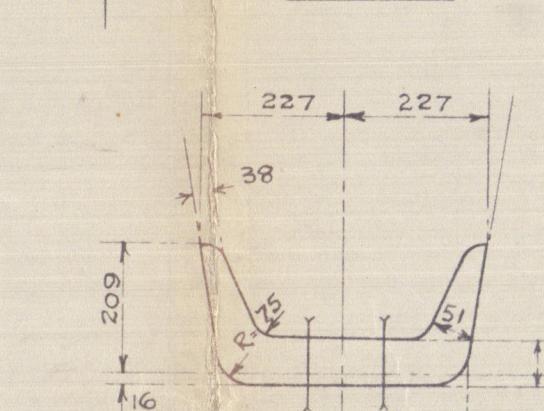
FRAME 6



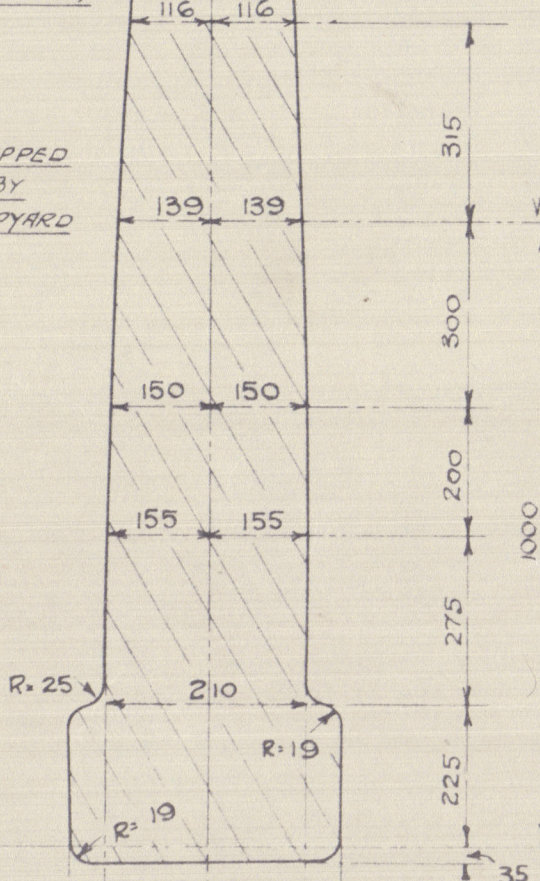
FRAME 7



25" M AFT C
FRAME &



FRAME 4



QTY	NO OFF	ITEM	MATERIAL	REMARKS
①	1	STERN FRAME (UPPER)	CAST STEEL	
②	1	" " (LOWER)	" "	
③	1	RUDDER BACK POST	FORGED STEEL	
④	2	" POST LINERS	BRONZE	
⑤	1	" " NUT	FORGED STEEL	
⑥	8	COUPLING BOLTS	" "	WITH NUT & SPLIT PIN
⑦	1	FEATHER	" "	
⑧	1	BEARING RING (UPPER)	HARD STEEL	BY SHIPBUILDER
⑨	1	" " (LOWER)	SOFT	" " "