

N^o 649
M.Y. NUCULANA

N^o 648-9.

MIDSHIP SECTION.

SCALE 1/2" = 1'-0"

DIMENSIONS

LENGTH 460'-0" B.P. BREADTH 59'-0" DEPTH 34'-0"

TO CLASS LLOYDS 100 A1 * CARRYING PETROLEUM IN BULK
SPECIAL NOTATION "LONGITUDINAL FRAMING ON BOTTOM & AT DECK"
SCANTLING CLEAR OF OIL COMPARTMENTS TO BE SPECIALLY CONSIDERED
SUITABLE INCREASES TO BE MADE FOR SHEER AT ENDS



EQUIPMENT

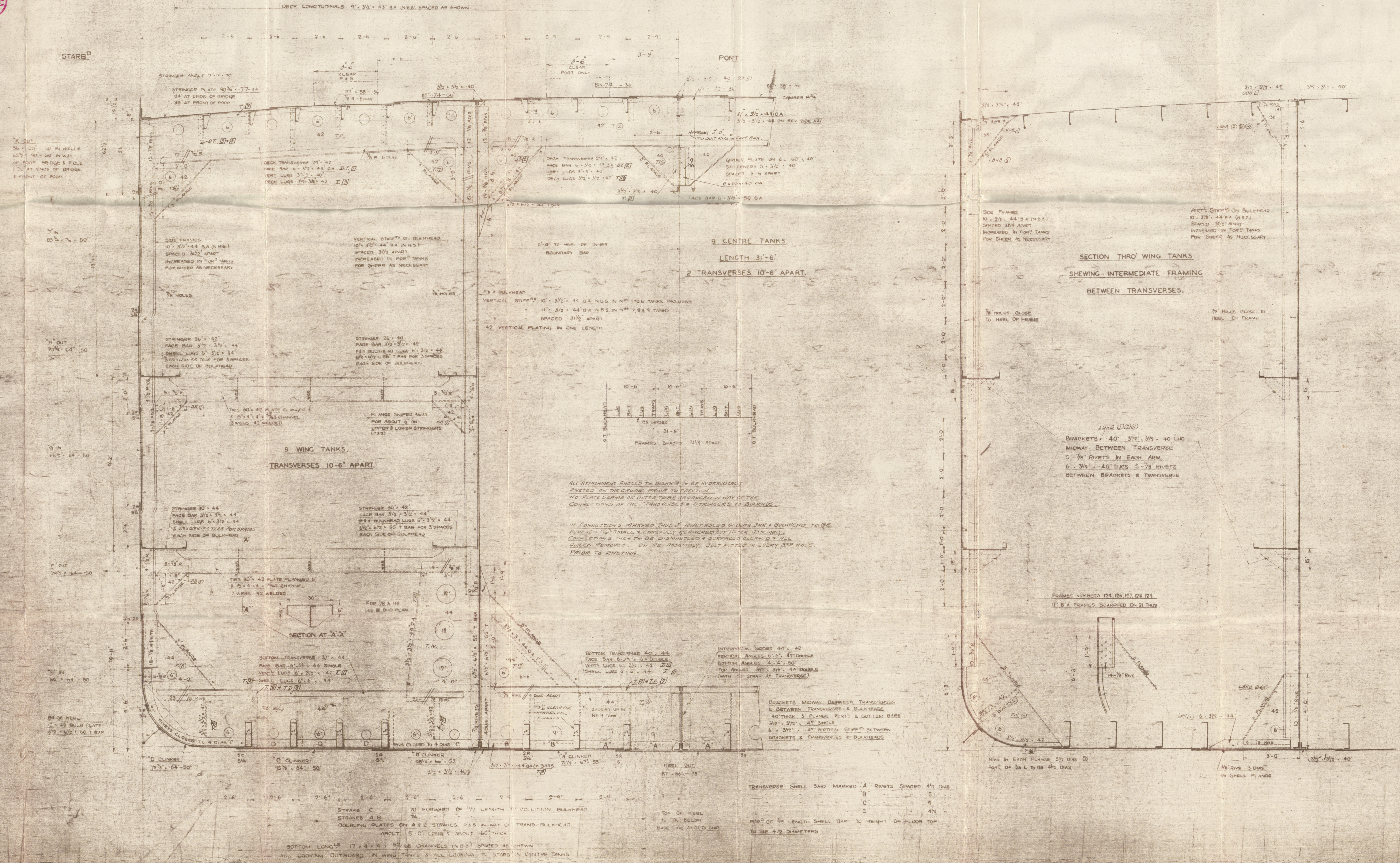
2ND NUMERAL	42780
POOP	3/4 x 7.5 x 34.50
BRIDGE	3/4 x 7.5 x 47.75
FORECASTLE	3/4 x 7.5 x 48.00
POOP DECKHOUSE	1/2 x 5.5 x 33.20
	1/2 x 10.0 x 33.20
	1/2 x 5.2 x 15.30
BRIDGE DECKHOUSE	1/2 x 7.5 x 41.75
	1/2 x 7.5 x 48.00
	1/2 x 7.5 x 43.00
	44.693

EQUIPMENT

- 3 DOWN ANCHORS 75% CWT. EACH (STOCKLESS)
1 STREAM ANCHOR 22 (EX STOCK)
300 FATHOMS 2 1/2" STUD LINK CHAIN CABLE
120 FATHOMS 5" (6-12) FLEXIBLE STEEL WIRE ROPE (STREAM WIRE)
130 FATHOMS 5 1/2" (6-24) SPECIAL FLEXIBLE STEEL WIRE ROPE (TOWLING)
2 @ 100 FATHOMS 2 1/2" (6-12) (HAWSEAR)
2 @ 100 2 1/2" (6-12) (WARRER)

NUMERALS

LENGTH B.P. ON LWL	L = 460'-0"
BREADTH M.O.	B = 59'-0"
DEPTH M.O. TO UPPER D	D = 34'-0"
L x D 460'-0" x 34'-0"	15660.0
L x B 460'-0" x 59'-0"	27280.0
L x D 460'-0" x 34'-0"	13.52



SECTION THRO' WING TANKS SHOWING INTERMEDIATE FRAMING BETWEEN TRANSVERSES.

BRACKETS 40' 3/4" 3/8" 40' LUG
MIDWAY BETWEEN TRANSVERSE
5-7/8" RIVETS IN EACH ARM
6-3/8" 40' LUGS 5-7/8" RIVETS
BETWEEN BRACKETS & TRANSVERSE

FRAMES NUMBERS 124, 125, 126, 127
11" B & FRAMES SCAMMED ON 21 THUS

BRACKETS MIDWAY BETWEEN TRANSVERSES
& BETWEEN TRANSVERSES & BULKHEADS
40 THUS 3/4" PLATES 10x17 1/2" BOTTOM BASE
3/8" 3/8" 42" SINGLE
6" 3/8" 42" VERTICAL SHEER BETWEEN
BRACKETS & TRANSVERSES & BULKHEADS

TRANSVERSE SHELL BARS MARKED 'A' RIVETS SPACED 4" DIAS
B S
C 4
D 4 1/2
POB OF 3/8 LENGTH SHELL BAR TO HEIGHT OF FLOOR TOP
TO BE 4 1/2 DIAMETERS

ALL ATTACHMENT ANGLES TO BULKHEADS & BE INDICATED
RIVETS ON THE GROUND PRIOR TO ERECTION
NO PLATE CORNERS OR BUTTS TO BE REARRANGED IN ANY OF THE
CONNECTIONS OF THE TRANSVERSES & STRINGERS TO BULKHEADS
IN CONNECTIONS MARKED THIS 'X' RIVET HOLES IN BOTH SHEET & BULKHEAD TO BE
PUNCHED TO 3/8" & KEPT FULLY REMOVED BUT NOT REARRANGED
CONNECTIONS THEN TO BE DISMANTLED & SUBSTITUTED WITH 1/2" DIAS
LUGS REMOVED ON RE-ERECTING. SET FITTED IN LUGS & HOLD
PRIOR TO RIVETING

SECTION AT A-A

BOTTOM TRANSVERSE 37' 44"
FACE BAR 3/2" 3/4" 44"
VERT LUGS 6" 3/4" 44"
7/8" SHELL LUGS 6" 6" 44"

CLINKER 75% 64' 50"
CLINKER 85% 64' 50"
CLINKER 95% 64' 50"

CLINKER 75% 64' 50"
CLINKER 85% 64' 50"
CLINKER 95% 64' 50"

CLINKER 75% 64' 50"
CLINKER 85% 64' 50"
CLINKER 95% 64' 50"

M.V. "Nucuhana" *
NEWCASTLE ON TYNE.

Report No. 100463.

Midship section as built

N/N AVE

S/R



© 2020

Lloyd's Register
Foundation

008533-008540-0113