

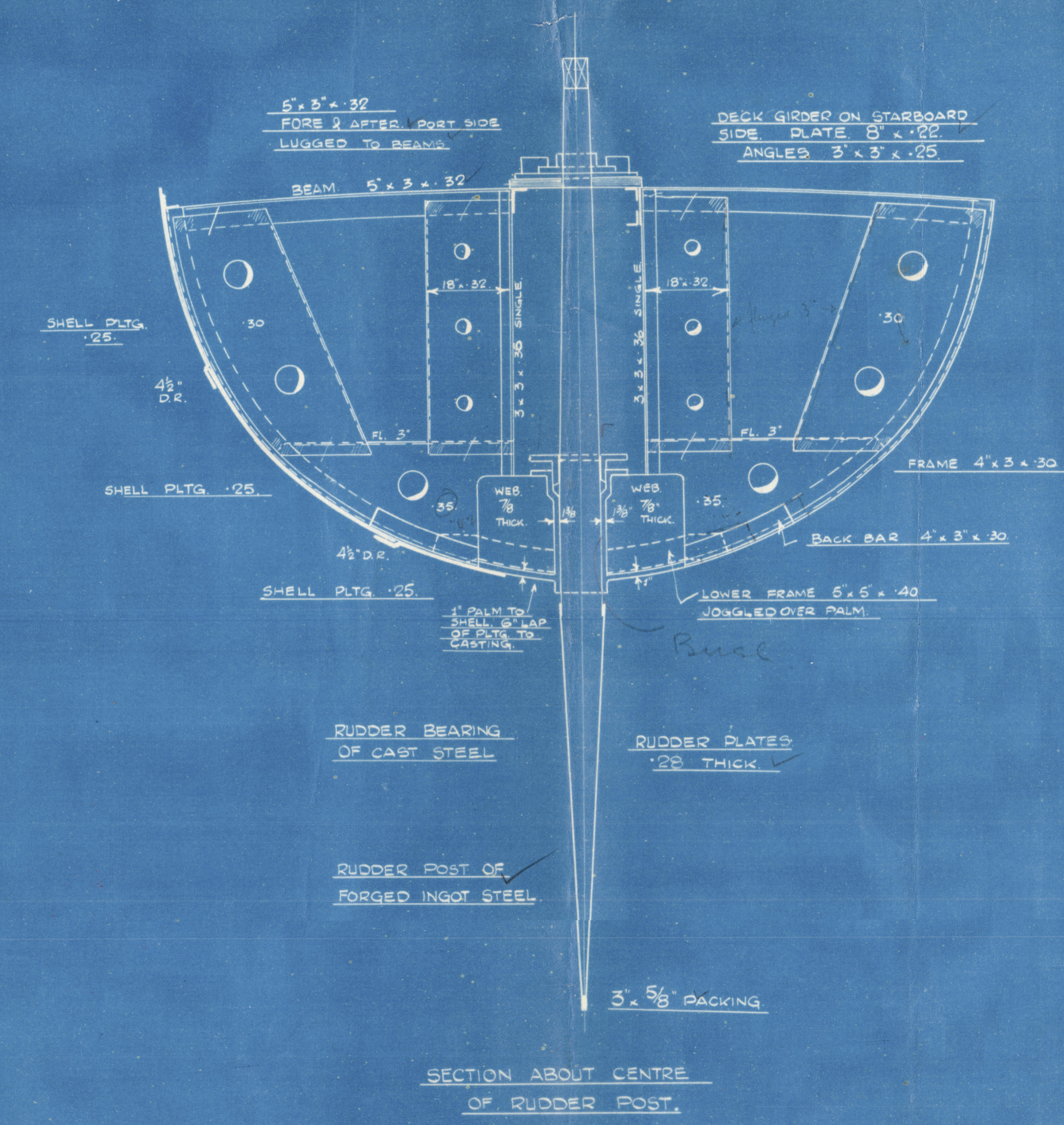
28-11-25

30 NOV 1925

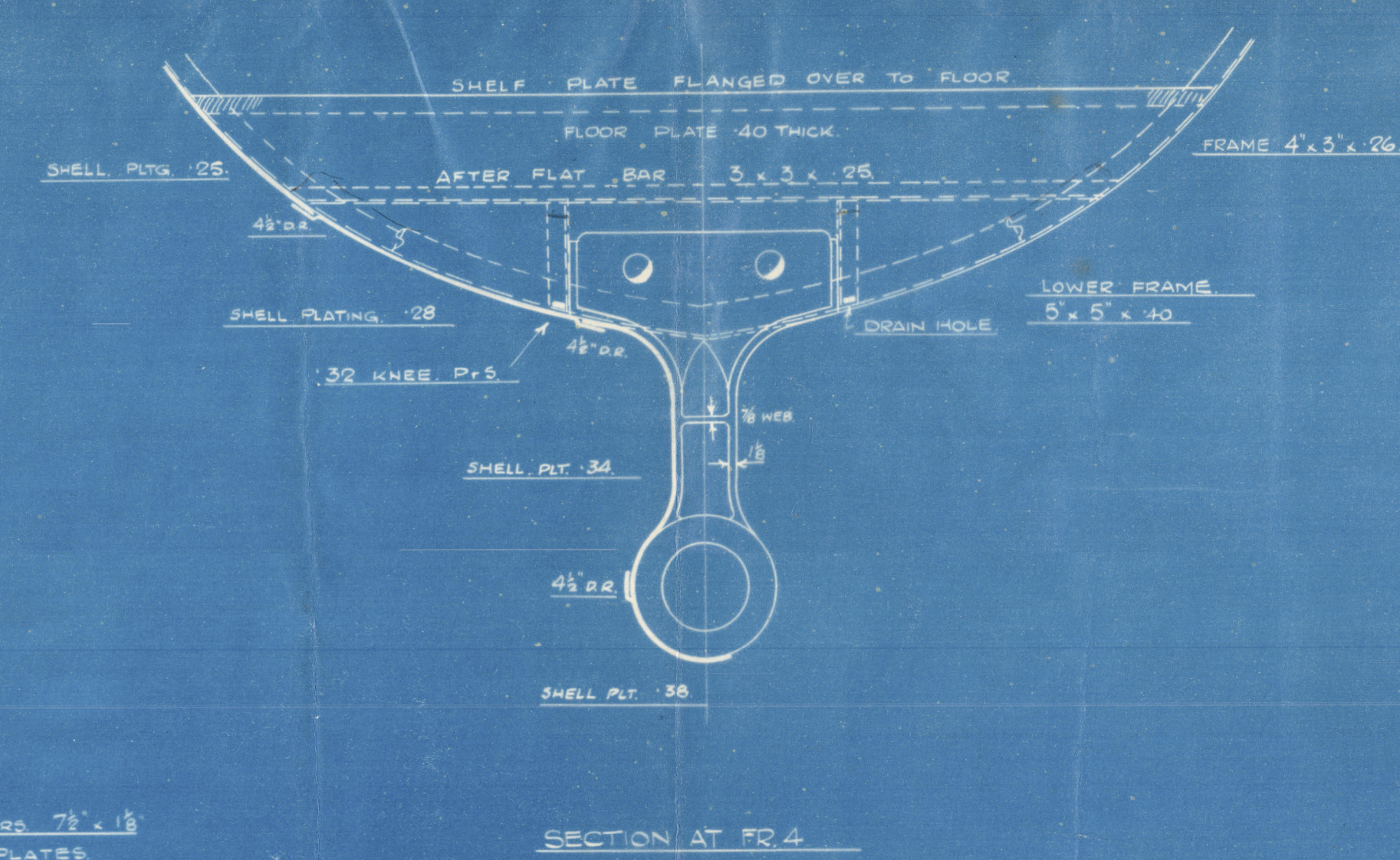
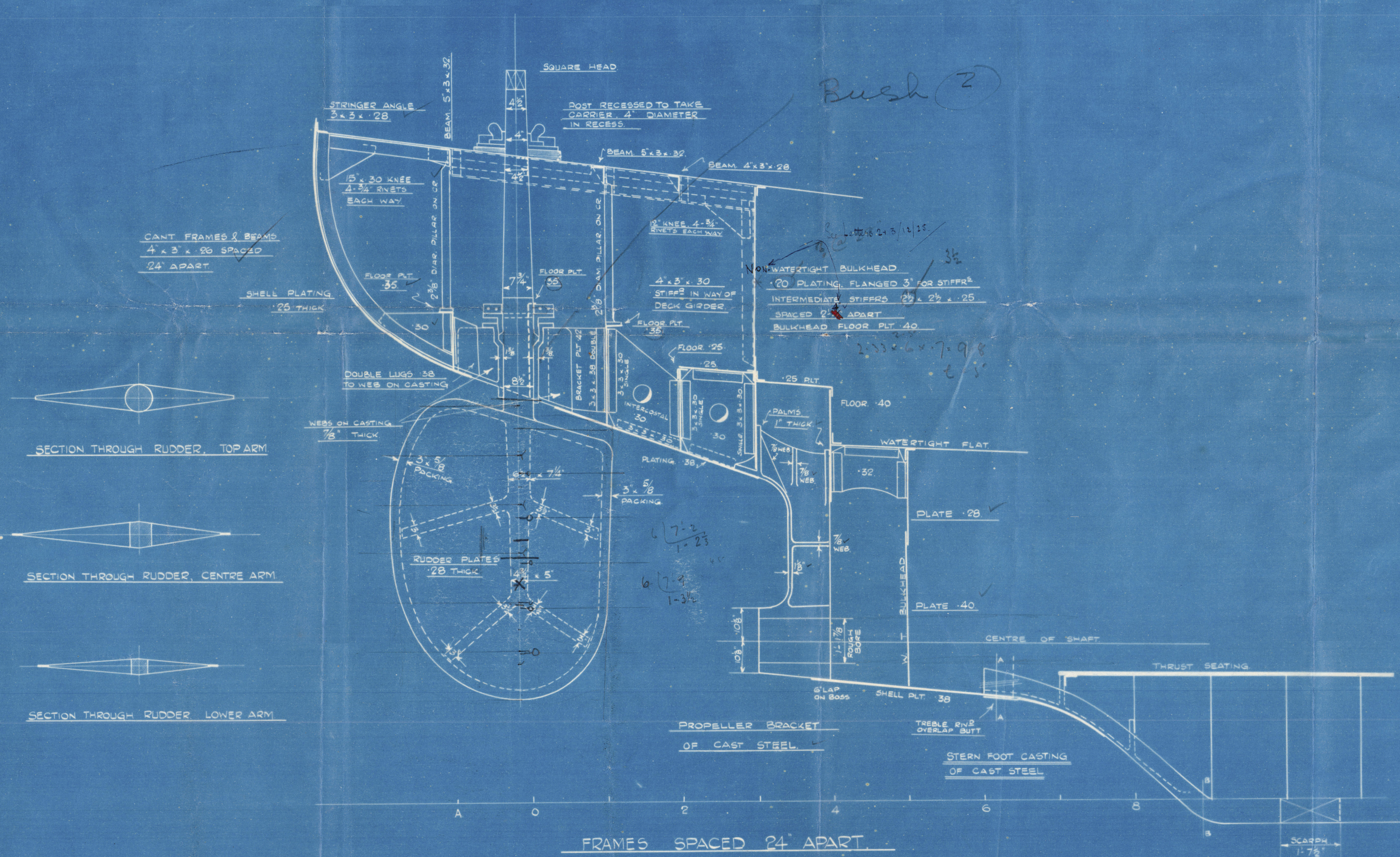
N^o 823-4-5. ARRANGEMENT OF CRUISER STERN AND SPADE RUDDER.

SCALE: - 1/2" = 1 FOOT.

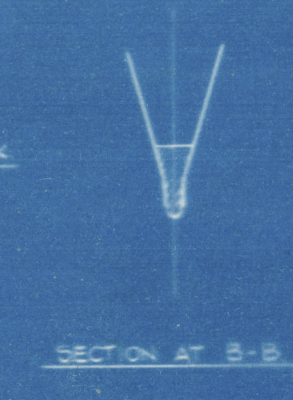
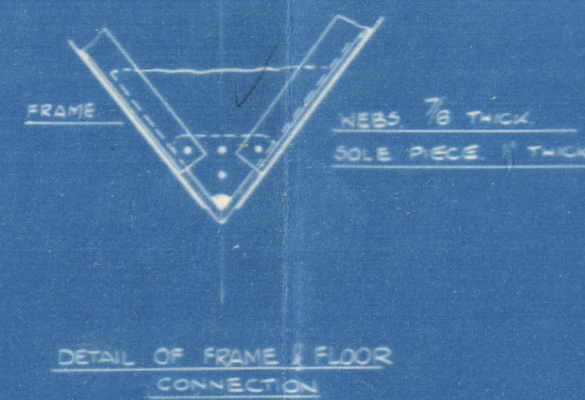
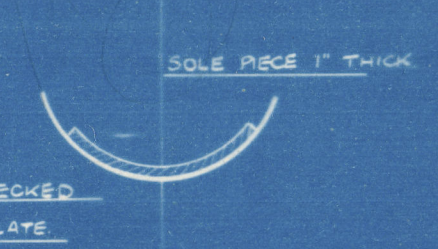
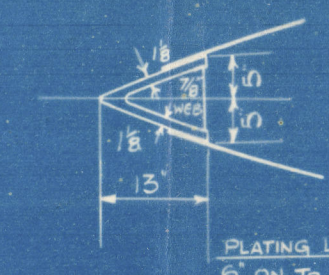
SMITH'S DOCK CO. LTD.
PRINTED 288
DATE 27-11-25
SHIPBUILDING YARD
SOUTH BANK, MIDDLESEX



Approved JH
C. L. L. 10/25



RUDDER PARTICULARS
AREA OF RUDDER 42 SQUARE FEET
SPEED - 11 KNOTS AHEAD, 8 1/4 KNOTS ASTERN
C.G. FORE & AFT 6\"/>



2

Spade Rudder Cruiser Stern.

Smiths Bk. Co.

823-4-5.

1-12-25

823. "Spina" *

824 "Shila"

825. "Signa"



© 2020

Lloyd's Register
Foundation

008533-008540-0086

Smiths Sk. 6.

823.4.5.

Arg. Brisen Stein, Spade
Kudde

Bag -

Smiths Sk. 6.

823.4.5.

Arg. Brisen Stein, Spade Kudde

1.12.25

2.



© 2020

Lloyd's Register
Foundation