

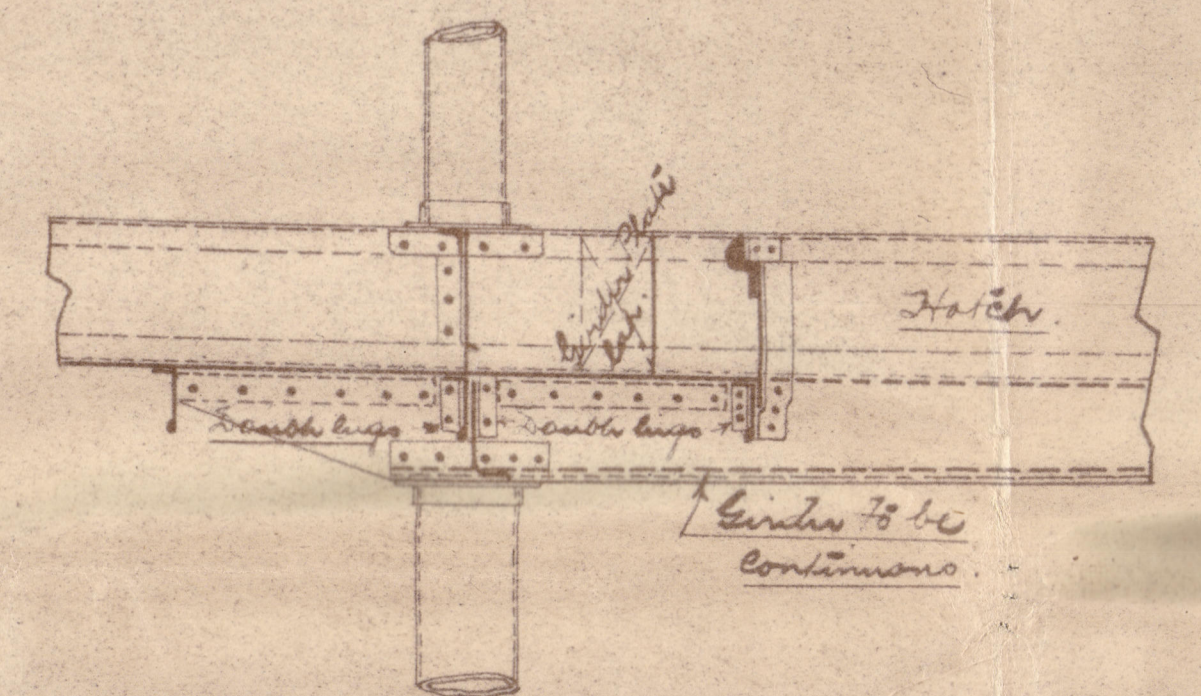
31.7.19

PROFILE SHOWING SCANTLINGS OF TUBE PILLARS, GIRDERS ETC.

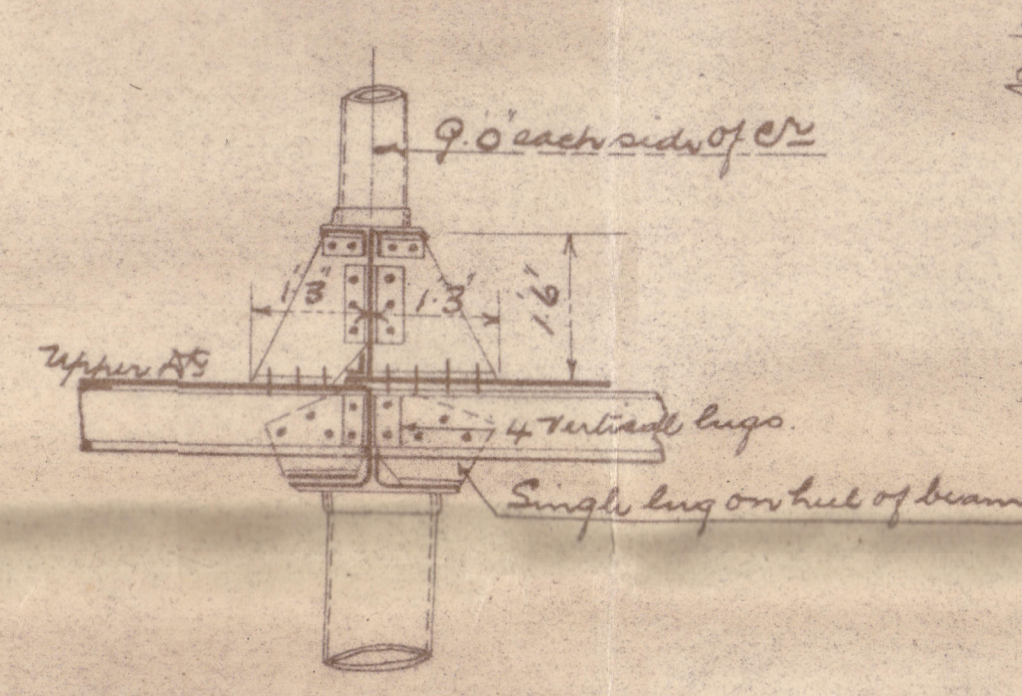
SCALE 1" = ONE FOOT.

UPPER DECK GIRDER DETAILS.

SCALE 1" = 1 FOOT.

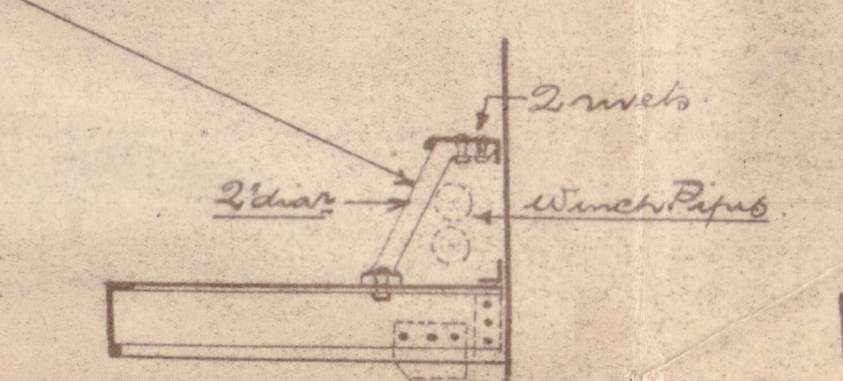


Elevation of Girder at Pillar head & Hatch ends.

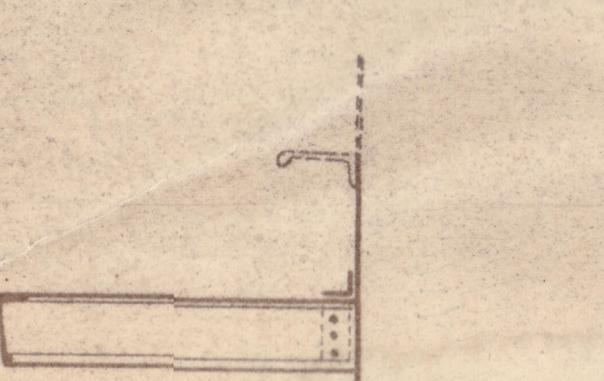


Cross Section of Girder at Pillar Head & Hatch.

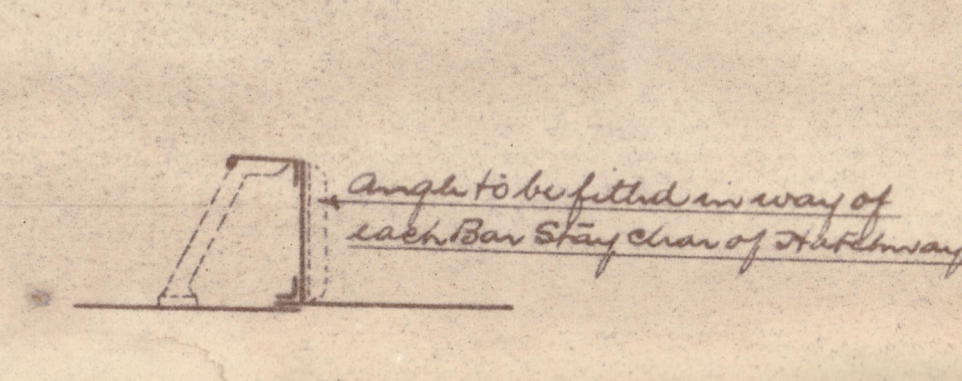
2' transverse supports to Post, Bridge Yoke & Hopper Deck Ends at ultimate beam.



Section of Girder in way of Hatch where no stiffening beams are fitted marked X on elevation.

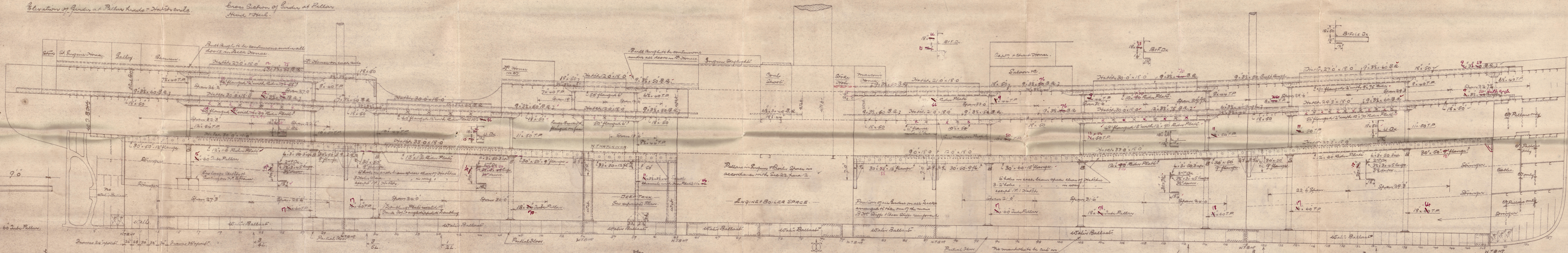


Section of Girder in way of Hatch where no stiffening beams are fitted.



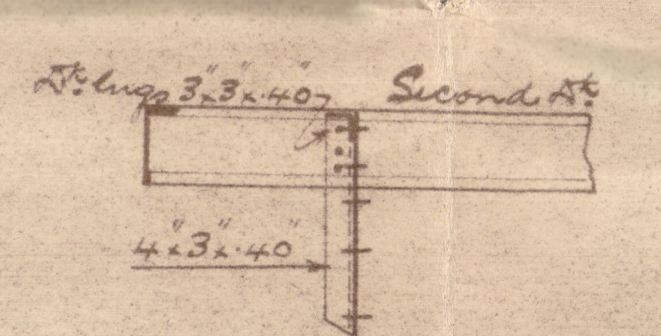
Section of Girder clear of Hatch.

Angle to be fitted in way of section showing clear of Hatchways.

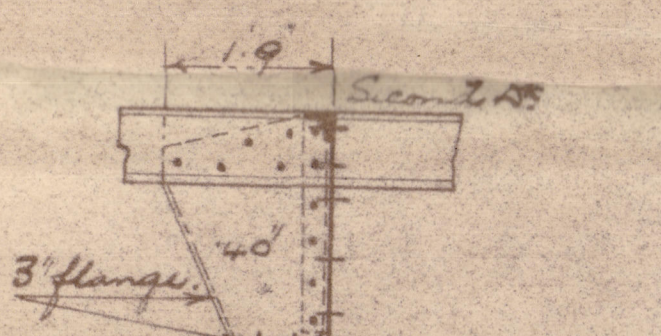


SECOND DECK GIRDER DETAILS.

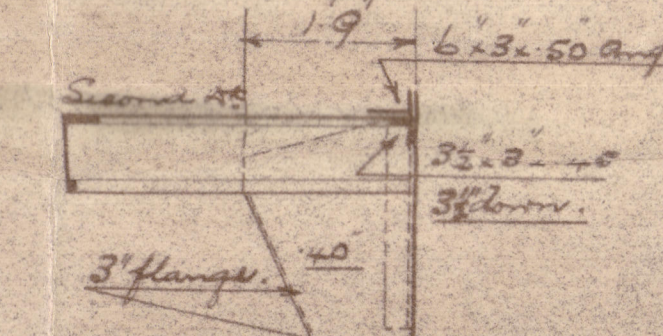
SCALE 1" = 1 FOOT.



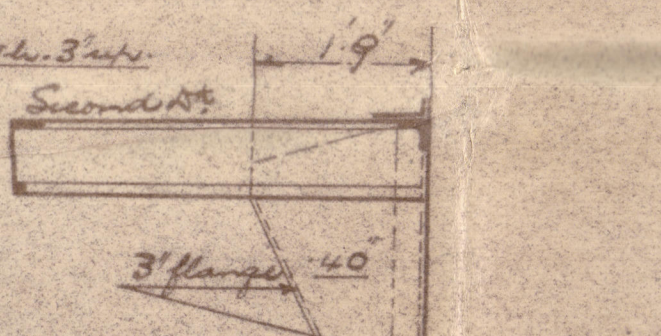
Section of Girder in way of Hatch where no stiffening beams are fitted.



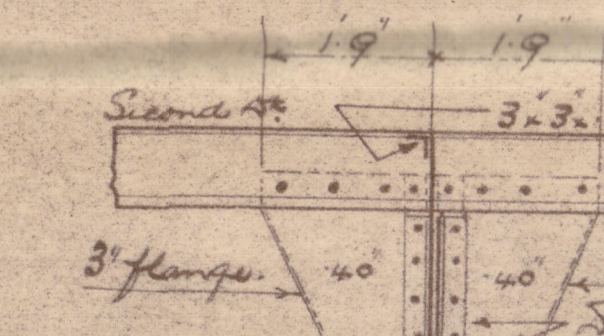
Section of Girder in way of Hatch where no stiffening beams are fitted.



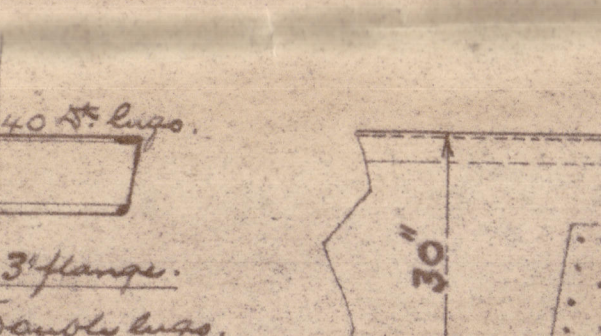
Section of Girder in way of Hatch where no stiffening beams are fitted.



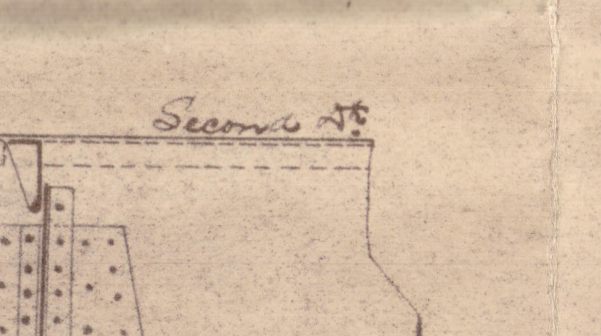
Section of Girder in way of Hatch where no stiffening beams are fitted.



Section of Girder in way of Hatch where no stiffening beams are fitted.



Section of Girder in way of Hatch where no stiffening beams are fitted.



Section of Girder in way of Hatch where no stiffening beams are fitted.

Cross Section.

Section of Girder showing connection (B) at head of Tube Pillars.

Top & aft Section.

919-20.

W. GRAY & CO. (1918) LIMITED
IRON & STEEL
SHIP BUILDERS
MARINE ENGINEERS
AND REPAIRERS
WEST HARTLEPOOL

Approved

(7)

PROFILE SHOWING SCANTLING
OF TUBE PILLARS + GIRDERS

GRAY'S. 919-20.

No 919

S.S. City of Transville
Apl. 16033.

No. 920

S/S "City of Singapore" Apl. Rpt. 16062.



© 2020

Lloyd's Register
Foundation

008507-008514-0138