

PROFILE & DECKS.
STANDARD VESSELS.
TYPE II

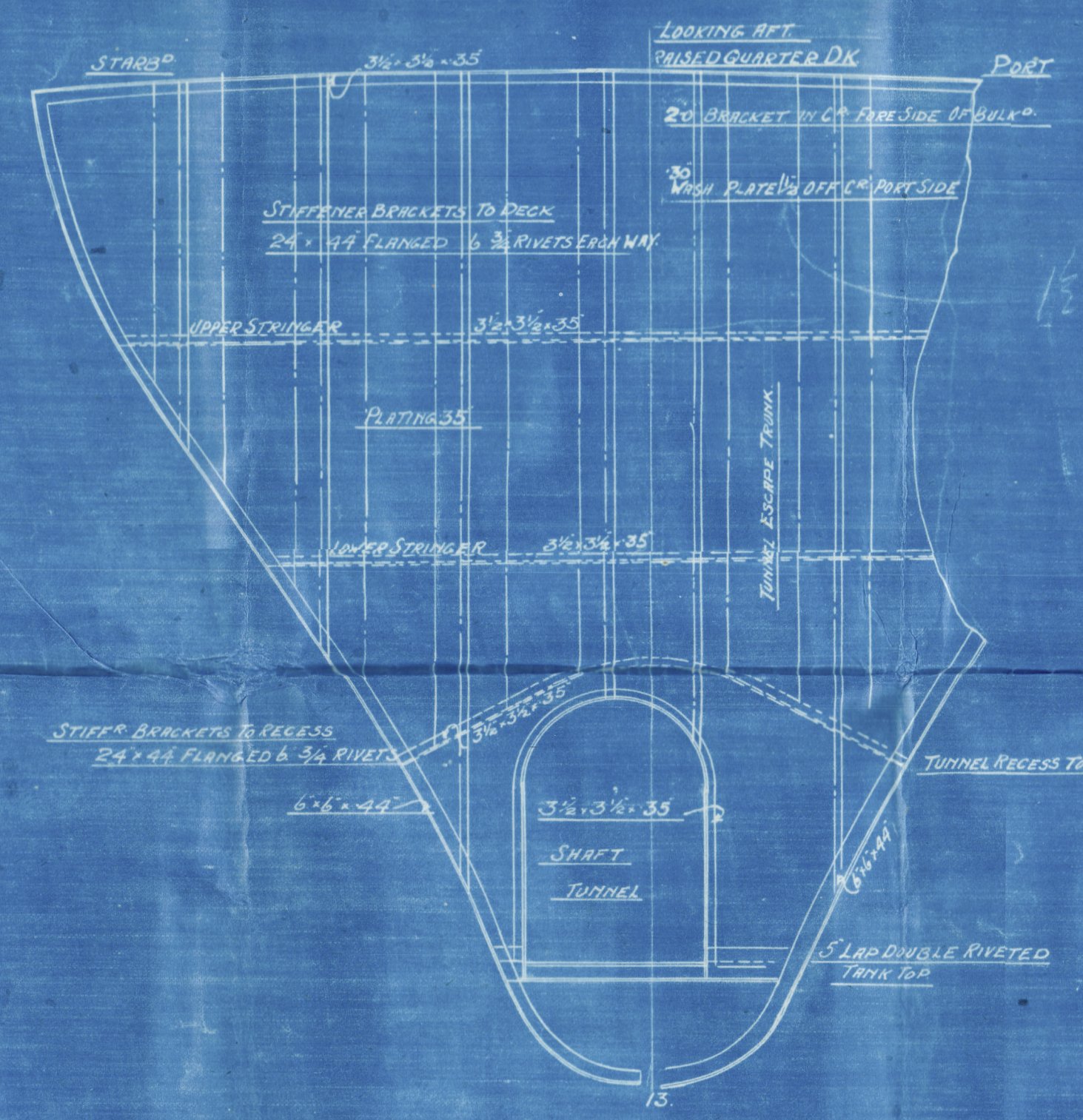
LENGTH B.P. 285'0"
BREADTH MLD 41'3"
DEPTH MLD 21' 2 1/2"
SCALE 1/8" = ONE FOOT

S.S. WAR VISOR

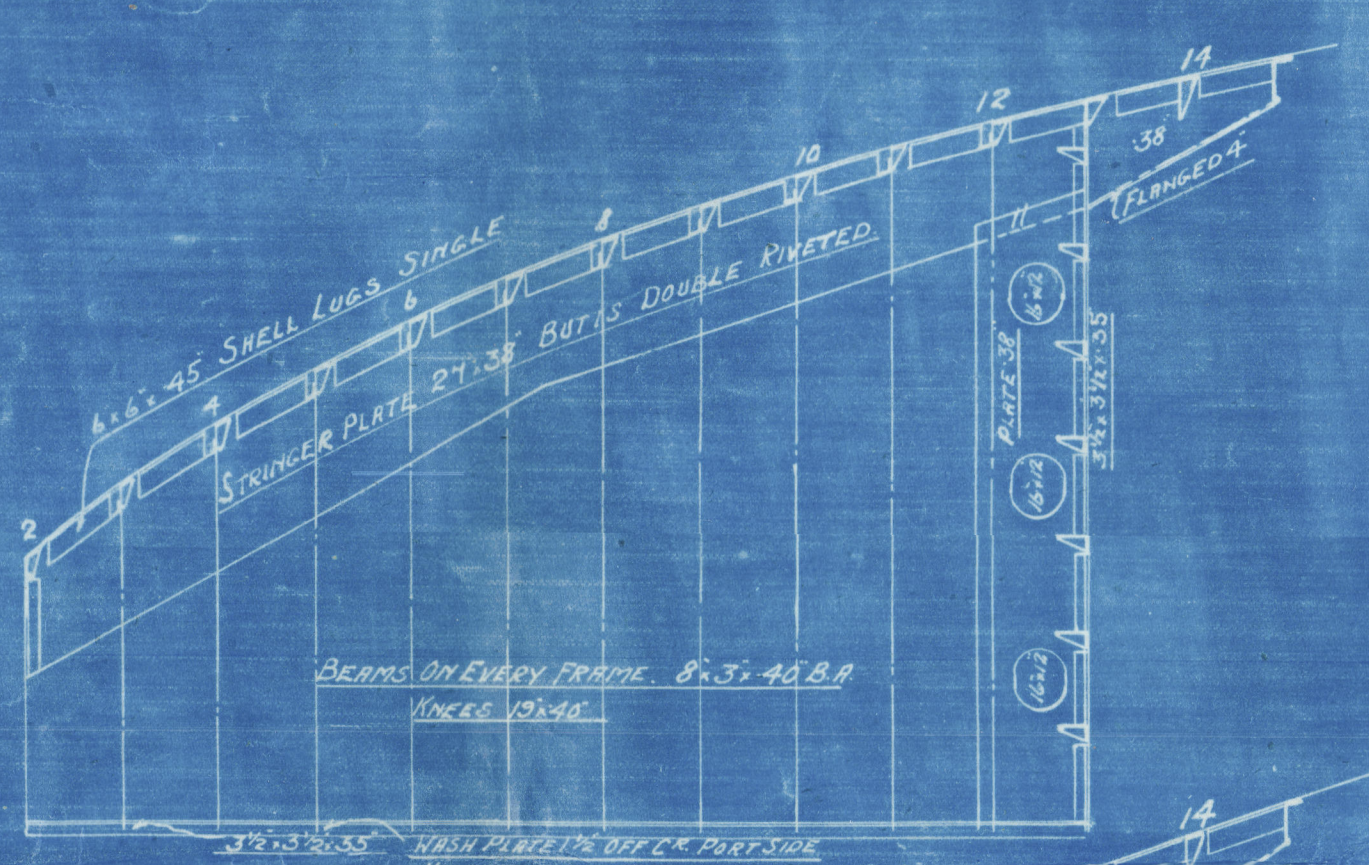
No. 295.



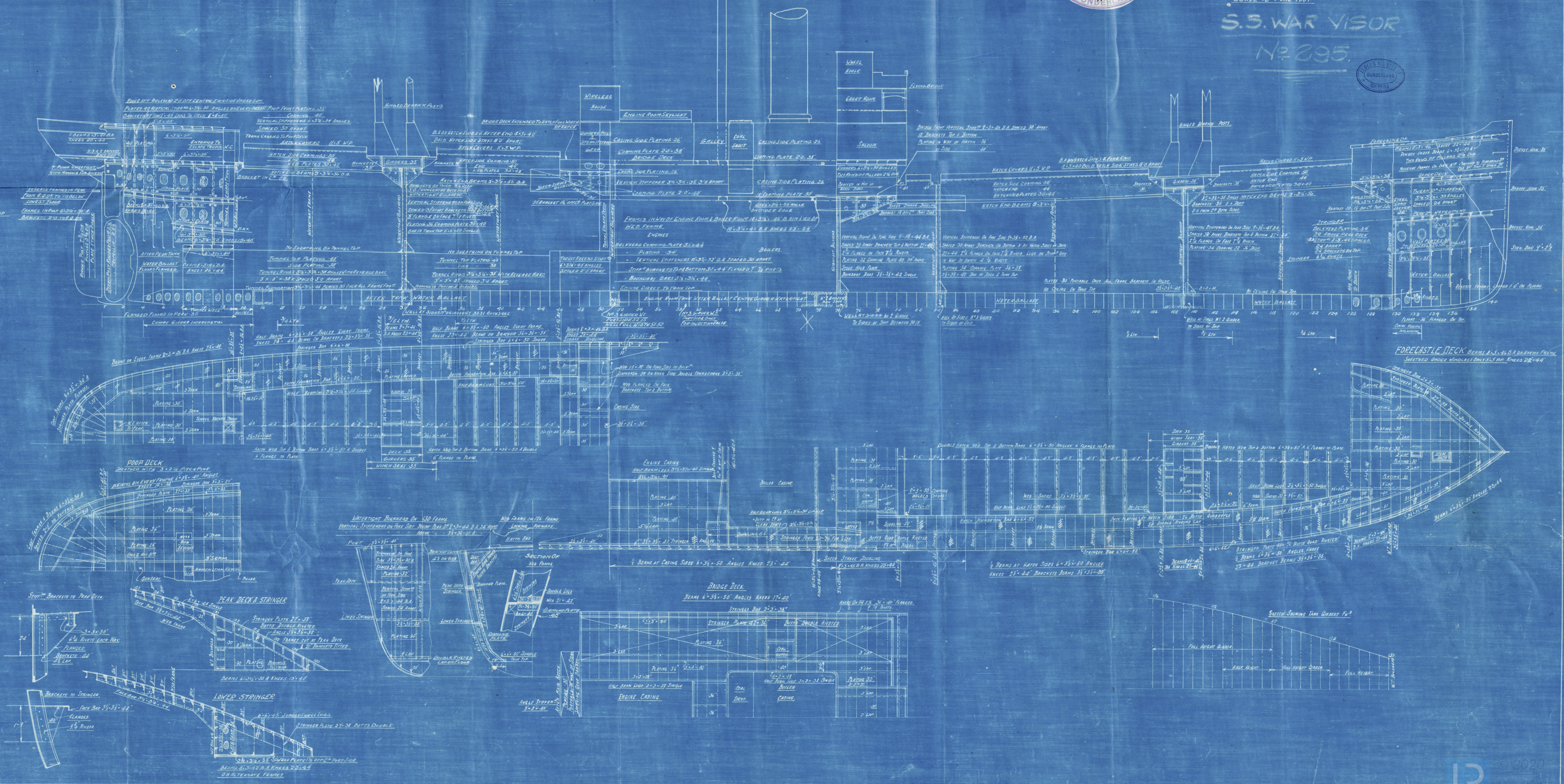
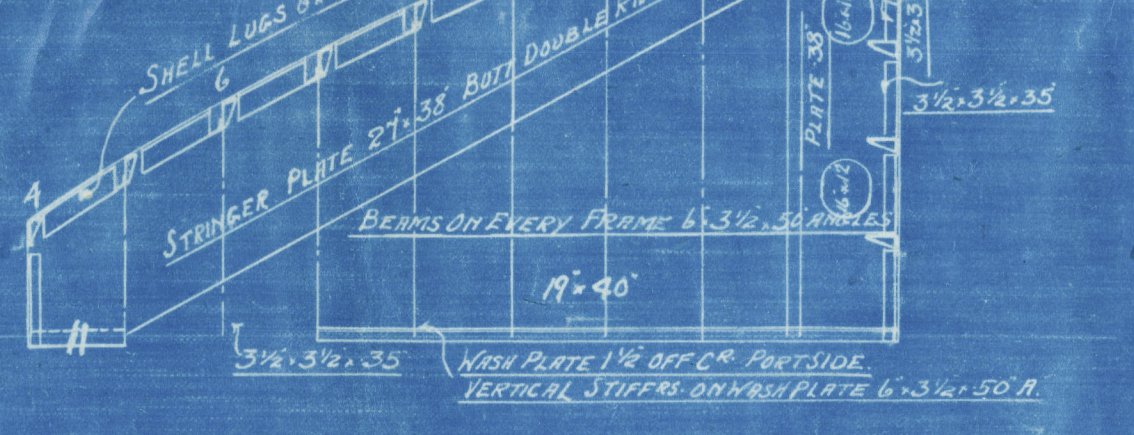
WATERTIGHT BULKHEAD ON 13 FRAME
VERTICAL STIFFENERS ON AFTER SIDE 8'3" x 4'4" B.A. 24" APART



UPPER STRINGER AFT.
1/8" = ONE FOOT



LOWER STRINGER



FORECASTLE DECK BEAMS 6" x 3 1/2" x 50" B.A. EVERY FRAME
SHEATHED UNDER WINDLASS ONLY 2' x 2' APART

S. P. AUSTIN & SON L^D

PROFILE & DECKS.

S.S. "WAR VISOR".

SLD RPT No 27245

(AS BUILT)



© 2020

Lloyd's Register
Foundation

008492 - 008506 - 0031