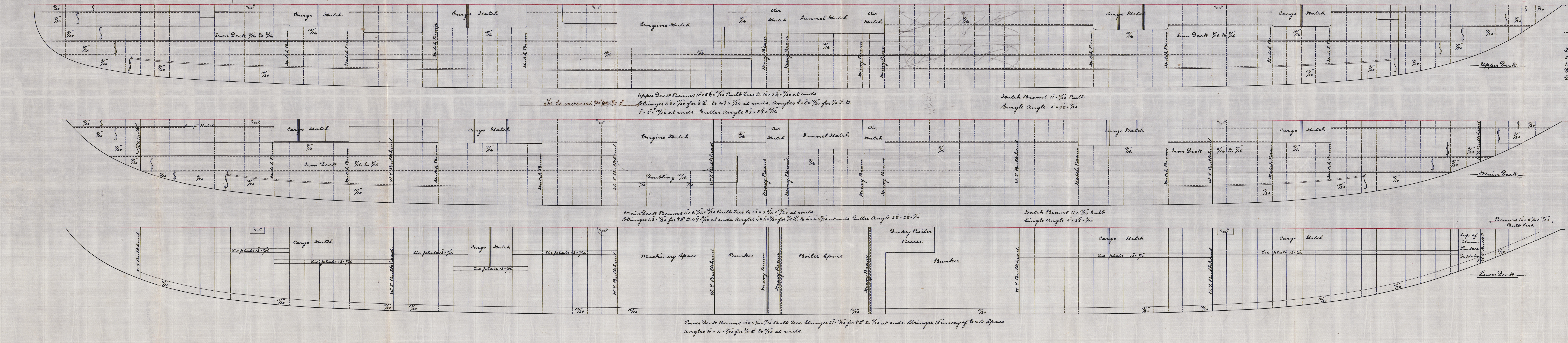
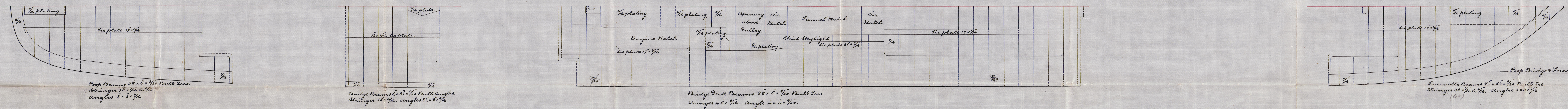
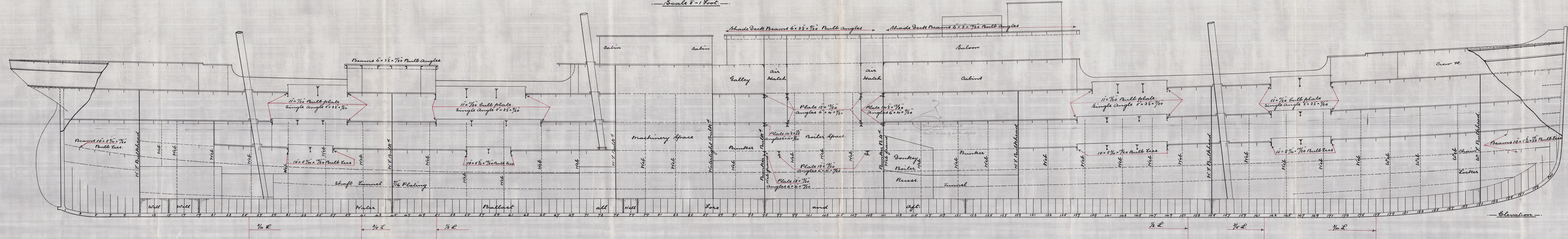


A. L. Meier

No 573.

Correct Longitudinal Plan.

Scale 5" = 1 Foot.

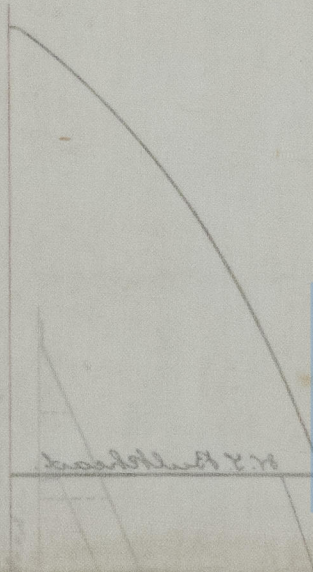
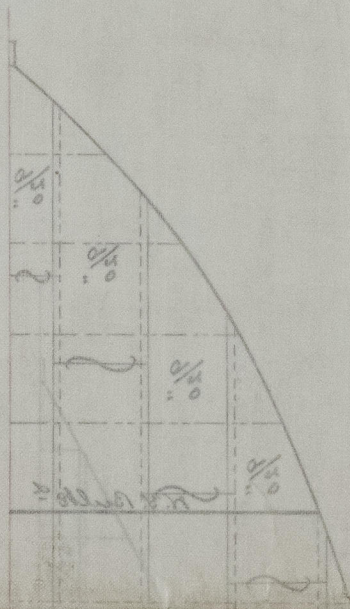
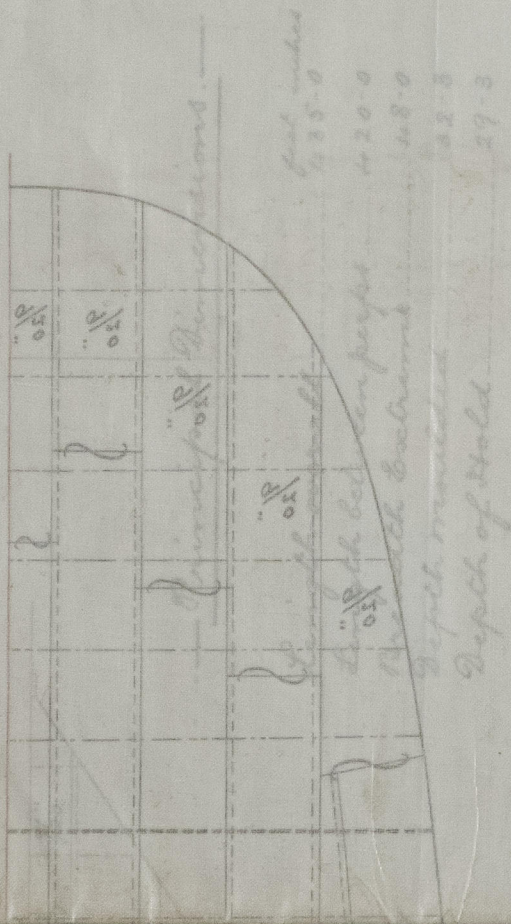


Principal Dimensions.

Length overall	123.0
Length between perfs	120.0
Beam at bow	18.0
Depth moulded	22.0
Depth of hold	27.0

H. Merig - Manuel Calvo
 No. Report No
 28128.

angles $3 \times 3 \times \frac{1}{16}$
 28 x 116 1/2



© 2020
 Lloyd's Register
 Foundation

008472-008480-0123