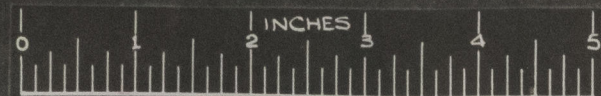


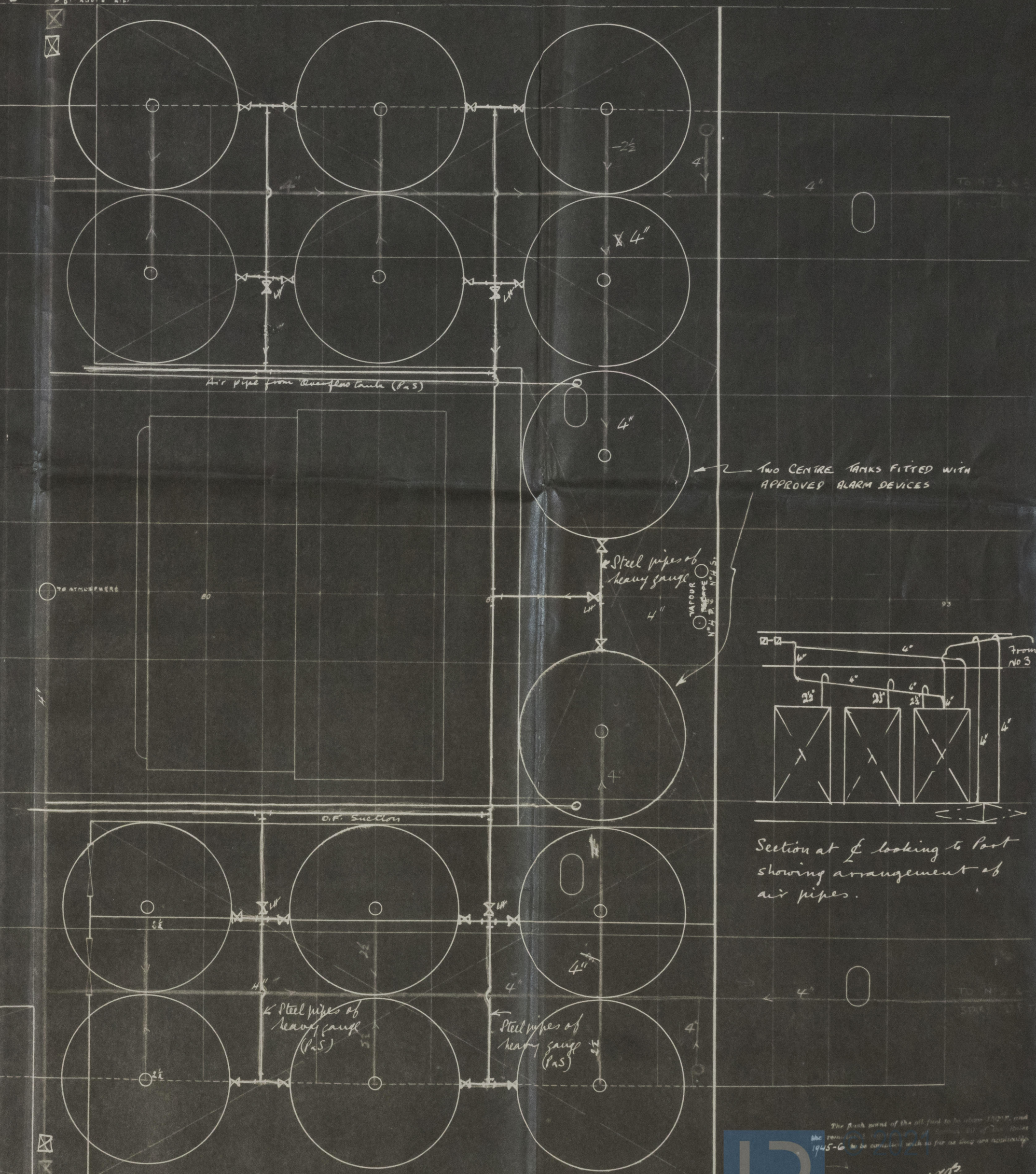
# VAPOR LIMA



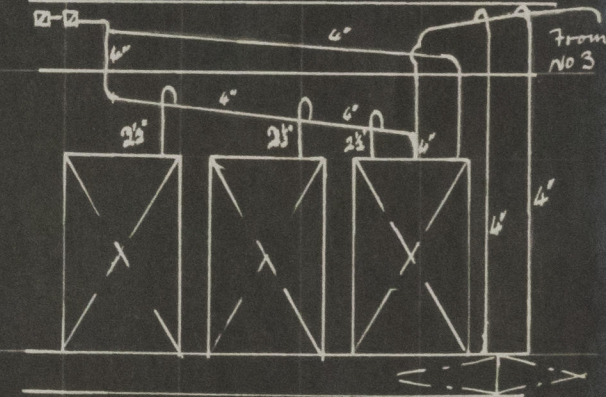
ESCALA = 1:25

## PLANO SOBRE O TETO DOS TANQUES

2 OVERFLOW NON RETURN VALVES  
6" ABOVE L.L.



Two CENTRE TANKS FITTED WITH APPROVED ALARM DEVICES



Section at E looking to Port showing arrangement of air pipes.

2 OVERFLOW NON RETURN VALVES  
6" ABOVE L.L.  
See letter

Filling Main 4" bore.

Valves marked 'X' to be controlled from deck.



LONDON COPY.

"Luia"

Lis rept No. 4334.

LONDON COPY.

008434.008438.0086

008434.008438.0086



© 2021

Lloyd's Register  
Foundation