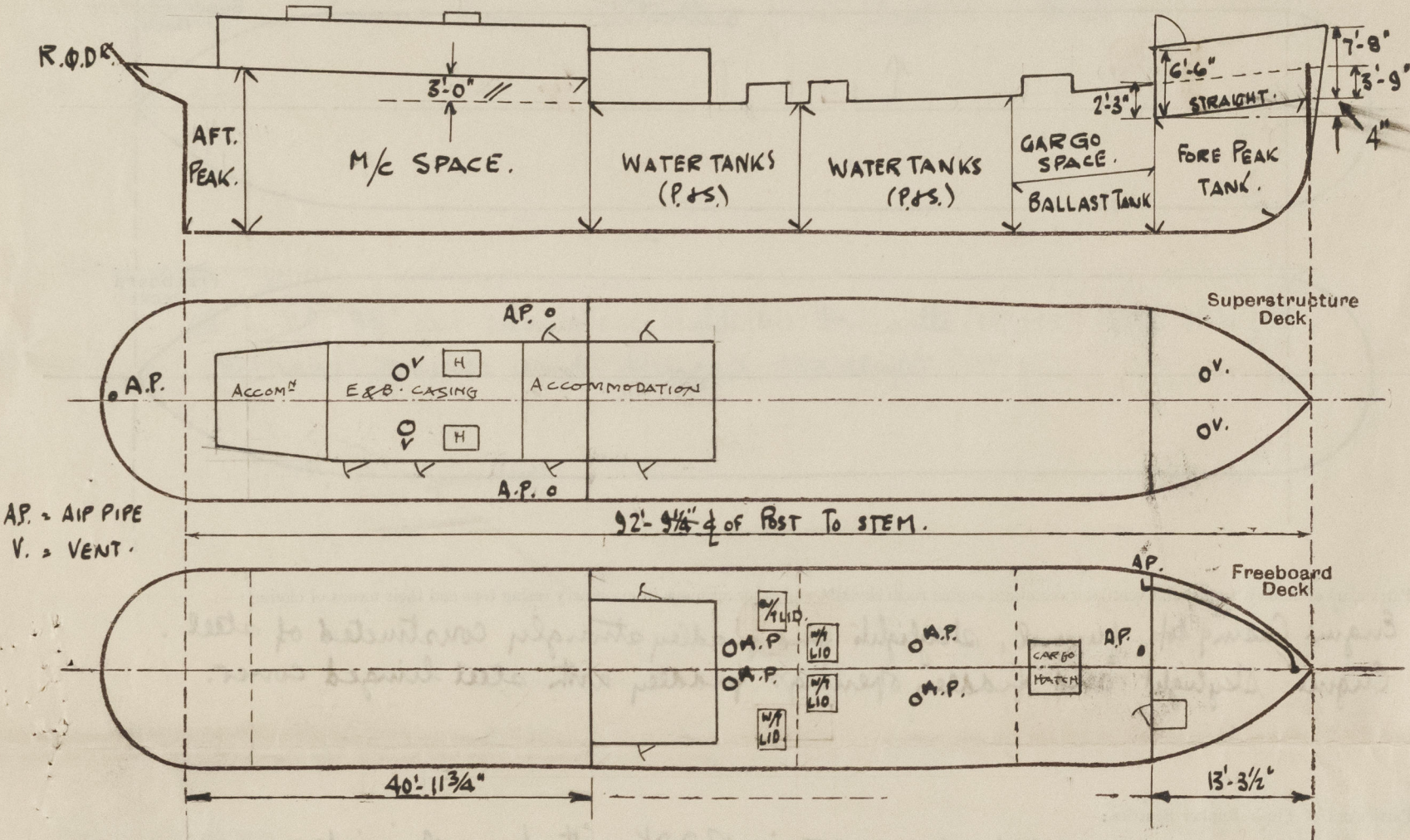


Lloyd's Register of Shipping.
SURVEYS FOR FREEBOARD.
(CONDITIONS OF ASSIGNMENT.)

Ed 5059.

Ship's Name Empire Billow Port of Survey Northwich (Liverpool)
Official Number _____ Surveyor's Signature J.W. Baylan
Nationality and Port of Registry _____ Date of Survey Whilst building.

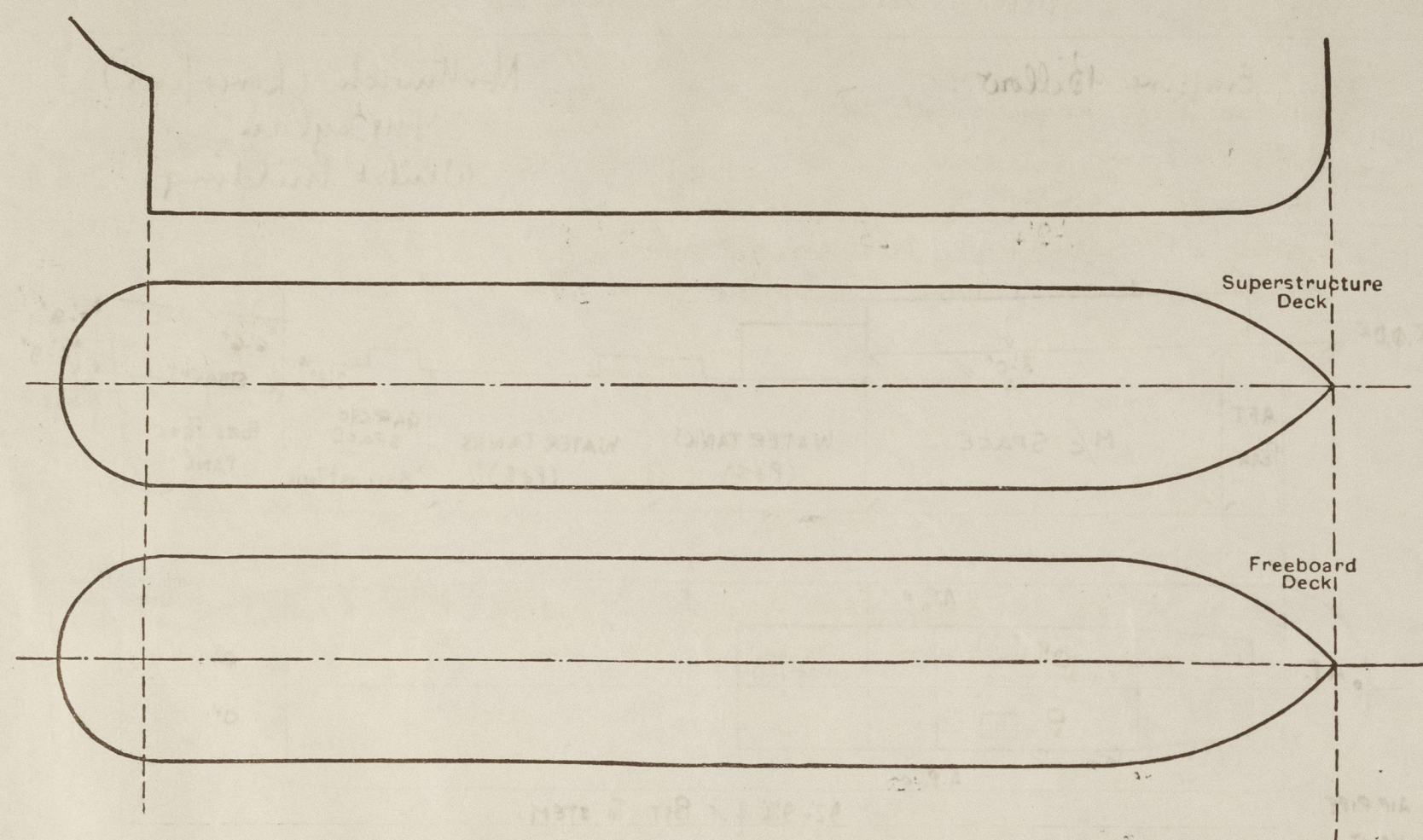
Disposition and dimensions of superstructures, trunks, deckhouses and machinery casings to be inserted in the diagrams and tabular statement:—



Particulars of Superstructures, Trunks, Casings, Deckhouses.								
	Coaming	Plating	Stiffeners	Spacing	End Attachments of Stiffeners	Size of Openings	Height of Sills	Height of Casings
Poop Bulkhead	✓							
Raised Quarter Deck Bulkhead ...	30 ✓	30 ✓	6"x3"x.44 B.A. ✓	27-28 1/2 ✓	BRTS TO R.Q.D. ✓	✓	✓	3'-0" ✓
Bridge, After Bulkhead	✓							
Bridge, Forward Bulkhead	✓							
Forecastle Bulkhead	30 ✓	30 ✓	3 1/2"x2 1/2"x.320 A. ✓	30' ✓	✓	4'-6"x2'-0" ✓	24" ✓	4'-6" ✓
Trunk, Aft	✓							
Trunk, Forward	✓							
Exposed Machinery Casings on Freeboard or Raised Quarter Decks ...	30 ✓	25 ✓	2 1/2"x2 1/2"x.250 A. ✓	24-30' ✓	BEKTS AT TOP ✓	2 @ 4'-6"x2'-0" ✓	24" ✓	6'-10" ✓
Exposed Machinery Casings on Superstructure Decks	✓							
Machinery Casings within Superstructures not fitted with Class I Closing Appliances	✓							
Deckhouses on Flush Deck Ships ...	✓							
Particulars of Closing Appliances (state if capable of being manipulated from both sides).								
Poop Bulkhead	✓							
Raised Quarter Deck Bulkhead ...	✓	No openings.						
Bridge, After Bulkhead	✓							
Bridge, Forward Bulkhead	✓							
Forecastle Bulkhead	✓							
Exposed Machinery Casings on Freeboard or Raised Quarter Decks ...	✓	One steel hinged door strongly constructed, manipulated both sides.						
Exposed Machinery Casings on Superstructure Decks	✓	Two steel hinged doors strongly constructed, manipulated both sides.						
Machinery Casings within Superstructures not fitted with Class I Closing Appliances	✓							
Deckhouses on Flush Deck Ships ...	✓							

“EMPIRE BILLOW

Particulars of Gangway Cargo and Coaling Ports:—



Engine Casing top, funnel, skylights and fiddle strongly constructed of steel.
Engine Skylight and fiddle openings fiddle with steel hinged cover.

Two in No. (18 & 15) flush bunker scuttles in R.F.Dk. with bayonet joints.
#chain attachment

Companionway fitted at entrance to forecastle space of strong, steel construction and steel linged door.

Two in No 6" dia corr vents coamings of strong steel, construction on forecastle deck.
Two in No 15" " " " 36" " " " " " " Engine casing etc. ✓

Efficient closing appliances supplied.

2nd No. 6" goose neck vents filled on foreboard deck forward to cargo space 36" Coaming.

Particulars of Air Pipes in exposed positions on foreboard, raised quarter, or superstructure decks : —

2 in No (1P & 1S) 2 1/2 dia steel airpipes 2'-9" to openings from feed tanks } On Raised Quarter Dk. ✓
 1 " " 2 1/2 " " 2'-9" " after Peak tank }
 1 " " 2 1/2 " " " from fore peak tank discharges into Freeboard Dk 36" above ✓
 4 " " (2P & 2S) 6" " " " " cargo tanks 36" to mouth on Freeboard Dk. ✓
 1 " " 2 1/2 " " " " ballast tank 36" " " ✓
 all airpipes of strong construction and fitted with "efficient" closing appliances. ✓

Inboard Deck scuppers cut in Gunwale Angle. ✓
W/c. discharge fitted with a 4" dia automatic non-return valve and ~~positive~~
~~screw-down~~ ^{along the raised quarter} controlled from Inboard Deck. ✓
Galley & W/P. discharges through a common 2" automatic-screw-down-non-return
valve in Engine Room controlled from Inboard Deck. ✓

2 in No 9½" dia clear glass lights in Forecastle (I.P. & S.) with strongly
N. Brass frames and hinged deadlights. ✓

Vertical distance of Sill of lowest Side Scuttle above top of keel

Steel stanchions 3'-0" high spaced 5'-0" apart, 2 steel rails 18" apart fitted in Forecastle and R. P. Decks.

Particulars of Gangways, Lifelines, etc. :—

home. ✓

Particulars of Freeing Arrangements.						
	Length of Bulwark	Height of Bulwark	Size of Freeing Ports	Number each side	Area each side	Rule area each side
After Well	38'-6"	3'-0"	2 @ 7'-6" x 6" 7.5 1 @ 6'-6" x 6" 3.25	3.	10.7	10.35
Forward Well						

State position of each freeing port

(F. and A. position and height above deck edge)

State whether the freeing ports are fitted with shutters, bars, or rails, and give particulars of such:—

Additional area where sheer is less than standard.

After Well :—
 Forward Well :—

PARTICULARS OF PROTECTION TO OPENINGS, ETC.

HATCHWAYS ON FREEBOARD AND SUPERSTRUCTURE DECKS.									
Description of Hatchway		CARGO HATCH ON FRB ^d . DECK.	BUNKER HATCHES. ON RAISING TOP. 2 IN N ^o (IP. 15)						
Dimensions of Hatchway		3'-6" x 3'-0"	5'-0" x 3'-6"						
COAMINGS	Height above Deck	27"	12"						
	Thickness		25"						
	Sides								
	Ends								
	Stiffeners								
	Brackets, Stays								
HATCH BEAMS	Number								
	Spacing								
	Scantling and Sketch								
	Bearing Surface								
FORE AND AFTERS	Number								
	Spacing								
	Unsupported Lengths								
	Scantling* and Sketch								
	Bearing Surface								
HATCH COVERS	Material	W.P.	W.P.						
	Thickness	2"	2"						
	How fitted	ONE COVER	ATHWARTSHIP.						
	Bearing Surface	2 1/2	2 1/2						
Spacing of Cleats		20-24	24'						
Number of Tarpaulins		2	2						
<p>*Are wood fore and afters steel shod at all bearing surfaces? <input checked="" type="checkbox"/></p> <p>Are battens and wedges efficient and in good condition? <input checked="" type="checkbox"/></p> <p>Are tarpaulins in good condition and in accordance with rule requirements? <input checked="" type="checkbox"/></p> <p>Are lashings provided in accordance with rule requirements? <input checked="" type="checkbox"/></p>									

Particulars of any special features:— 4 in N^o. Hatches to Water tanks 2'-6" x 1'-9" openings with 12" coamings, strongly constructed of steel with watertight hinged lids secured with toggles, fitted on Freeboard Deck. ✓

Endorsement at first survey and at surveys for renewal of Certificate:—

The fittings and appliances are in accordance with the particulars shown on this form (or as now modified) and are in good condition.



© 2020

Lloyd's Register
Foundation