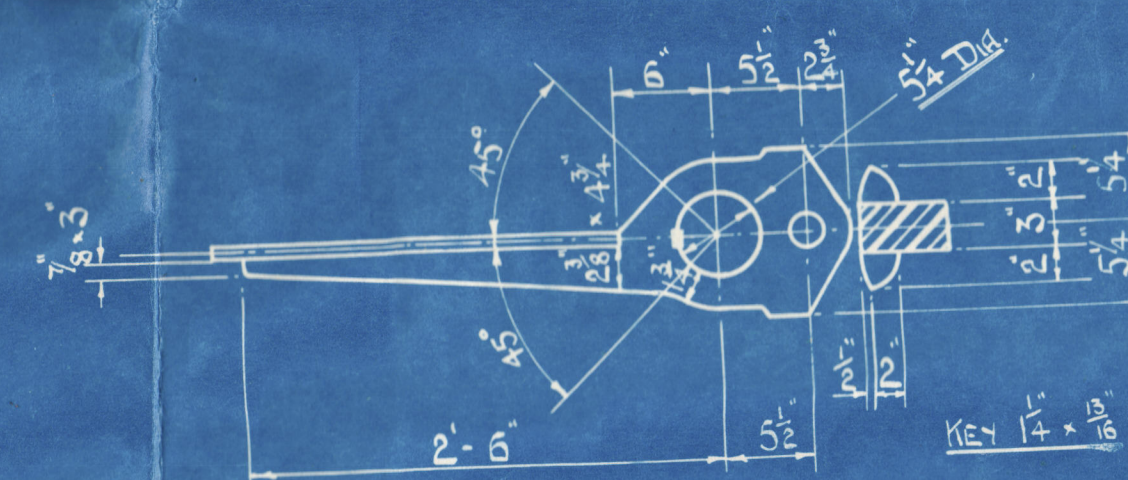
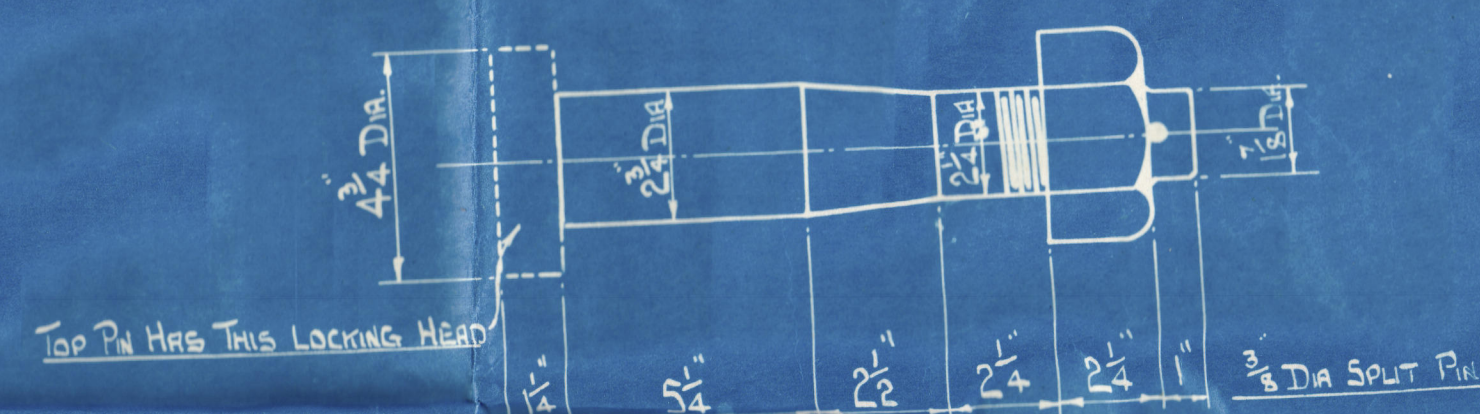
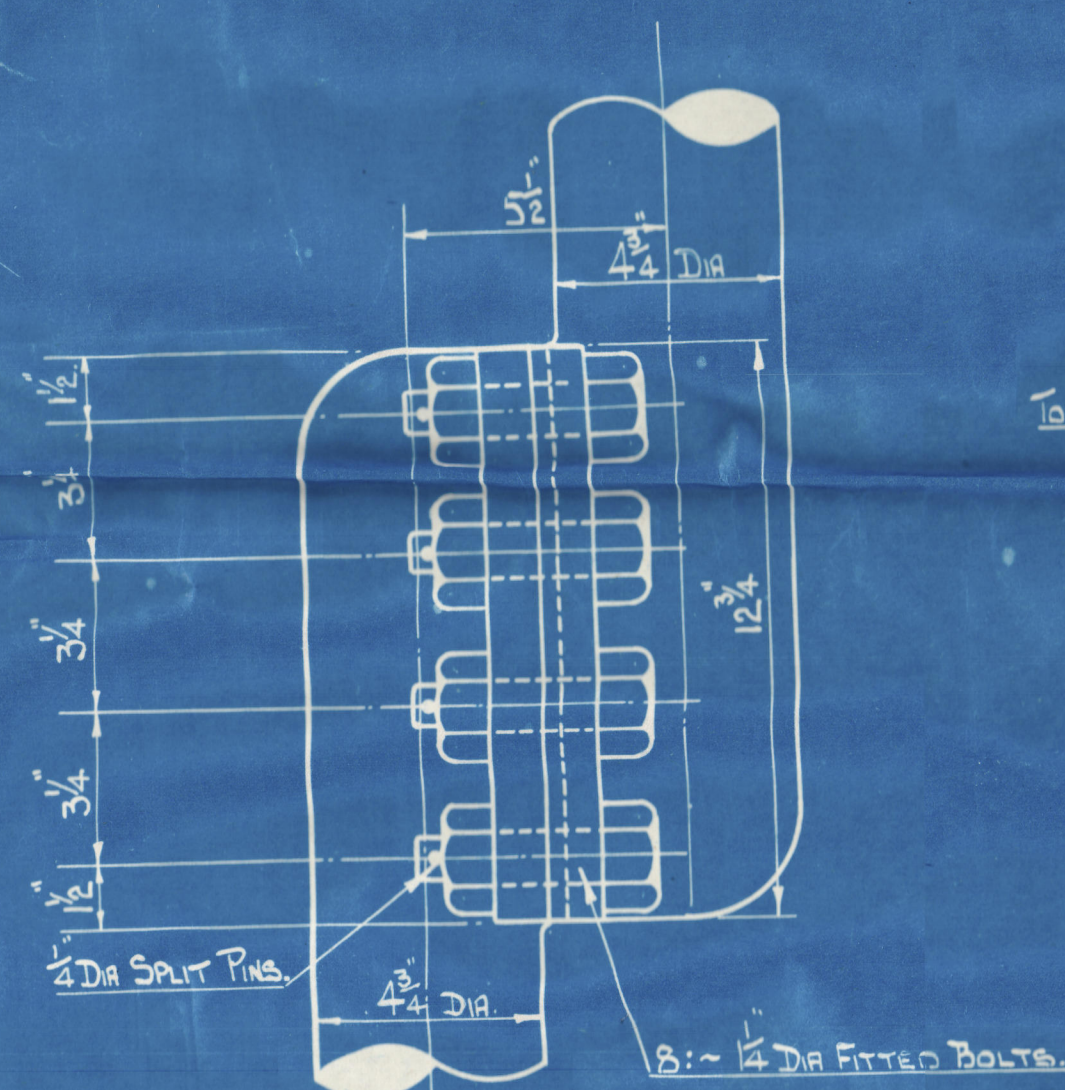
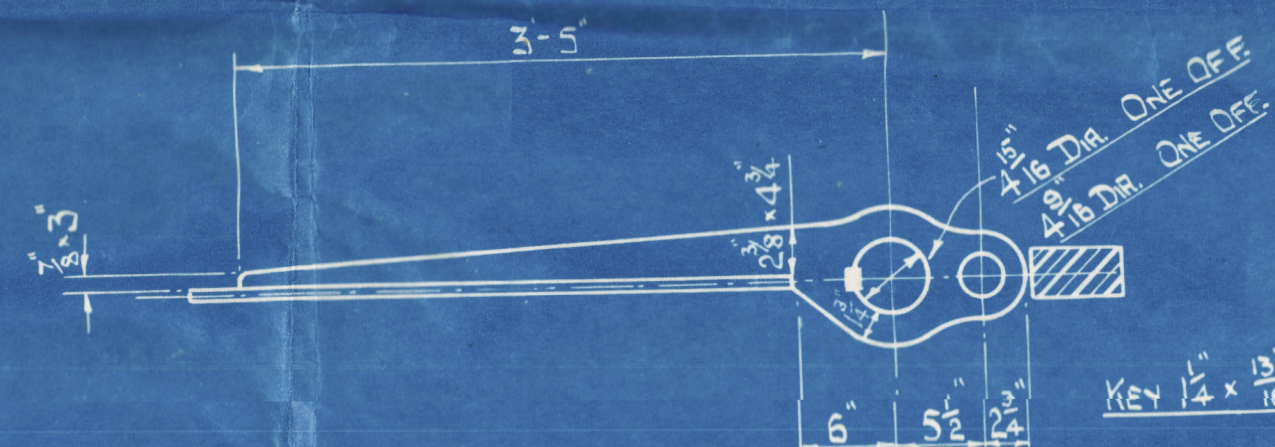


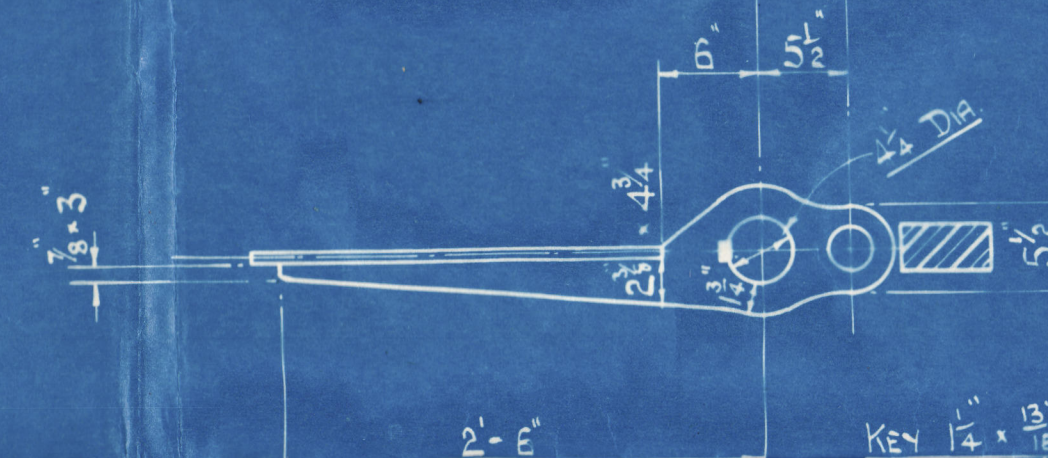
ARMS TO BE FITTED ON
ALTERNATE SIDES SHRUNK ON A KEYS.
KNETS IN STERN FRAME 1" DIA. 5" PITCH.



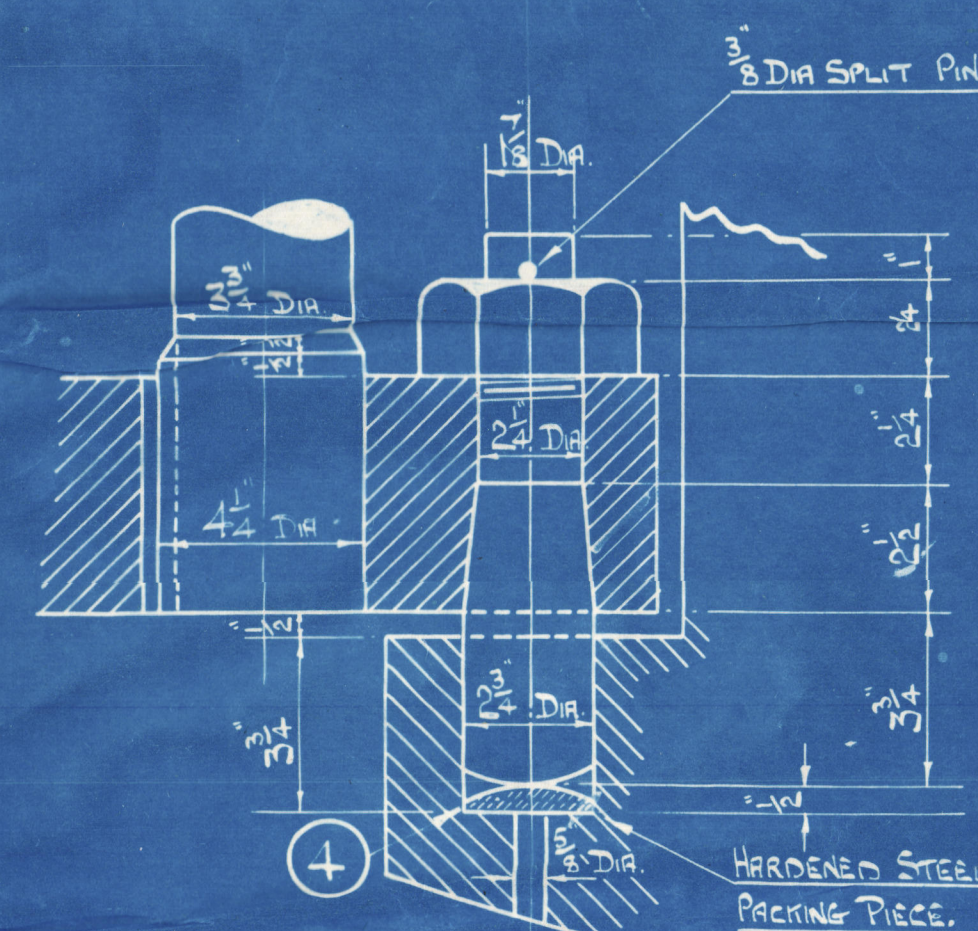
PLAN OF TOP ARM.



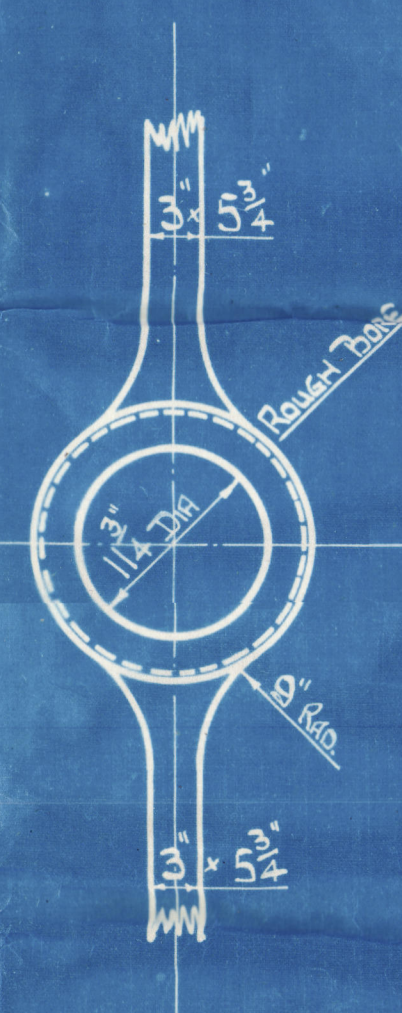
PLAN OF MIDDLE ARMS.



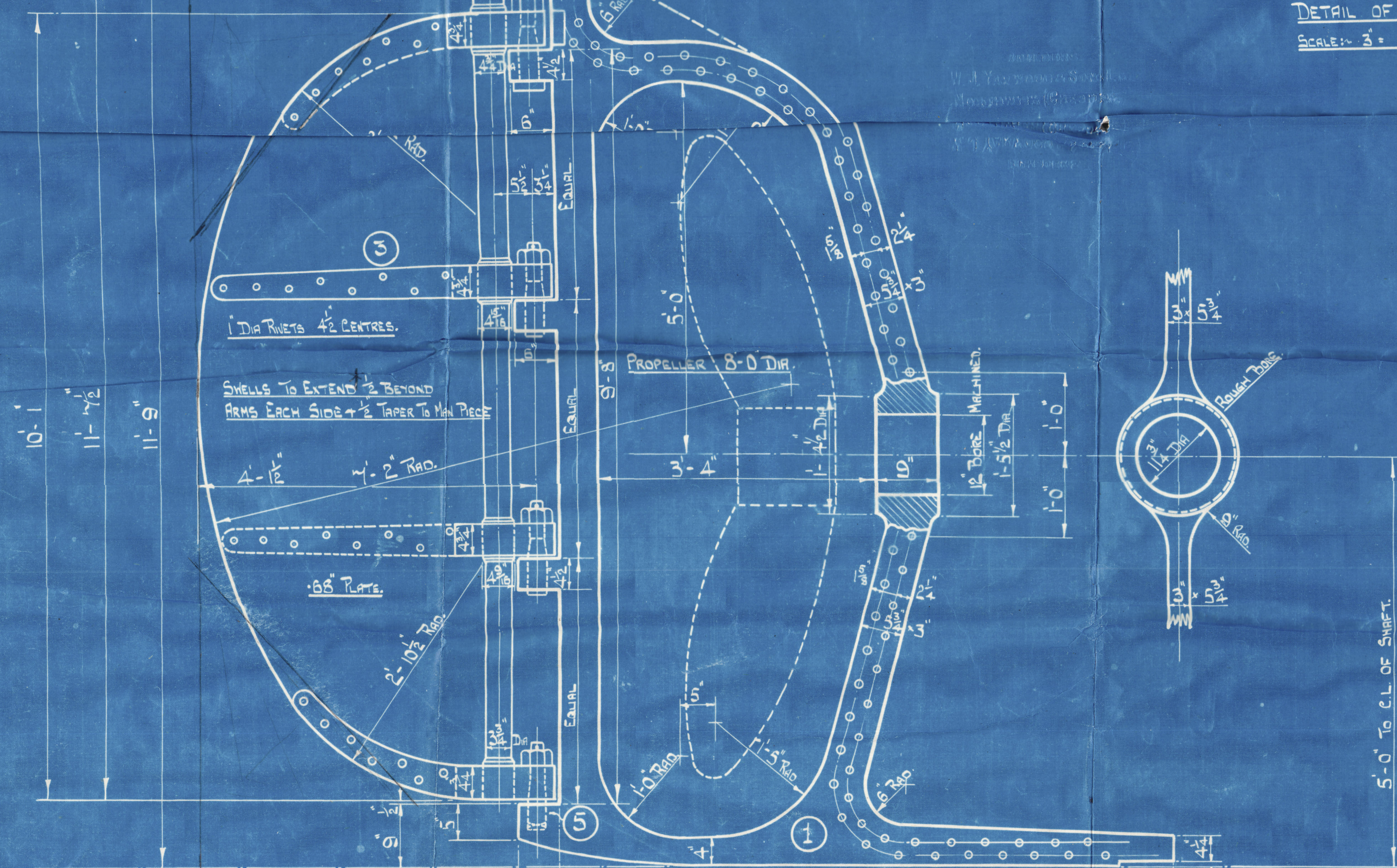
PLAN OF BOTTOM ARM



DETAIL OF BOTTOM PINTLE.



DETAIL OF COUPLING.
SCALE: $3'' = 1 \text{ FOOT}$.



DIMENSIONS.

LENGTH O.A. 100'-9"

LENGTH B.P. 92'-0"

BREATH MD 23- 0'

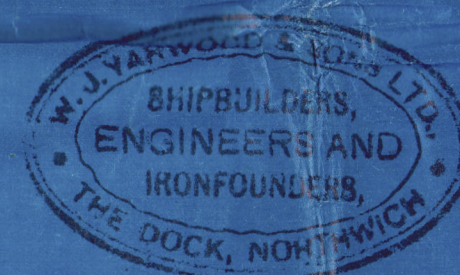
DEPTH 10' - 4"

TO CARRY FRESH WATER IN BULK.

NO	ON	DRAWING	ITEM	MATERIAL
1			STEAMFRAME WITH BOSS ROUGH BORED & HOLES DRILLED FOR RISERS & BOLTS AS SHOWN	FORGED IRON
2			BUDDER STOCK COMPLETELY MACHINED	
3			4 BUDDER ARMS SHOWN ON & KEVED TO STOCK & RIVET HOLES DRILLED	FORGED IRON
4			HARDENED STEEL PISTON LOFF	STEEL
5			4 BUDGIONS & NUTS COMPLETE	MILD STEEL

STERNFRAME & RUDDER FOR S. P.
SINGLE SCREW STEAMER.

TO LLOYDS CLASS 100 A.1. WATER CARRIER



PRINT No. 6923
DATE 19-1-43

W. J. YARWOOD & SONS LTD.,
THE DOCK
NORTHWICH

SHIP № 718

DRG N.º 5735

DRAWN BY J.H. CHECKED BY
 INDEXED BY J.H.

718

Stemframe

+

Rudder

Apparatus

S. S. Empire Bellows

LIVERPOOL

Report No. 119669

④

© 2020

Lloyd's Register
Foundation

008428-008433-0002