

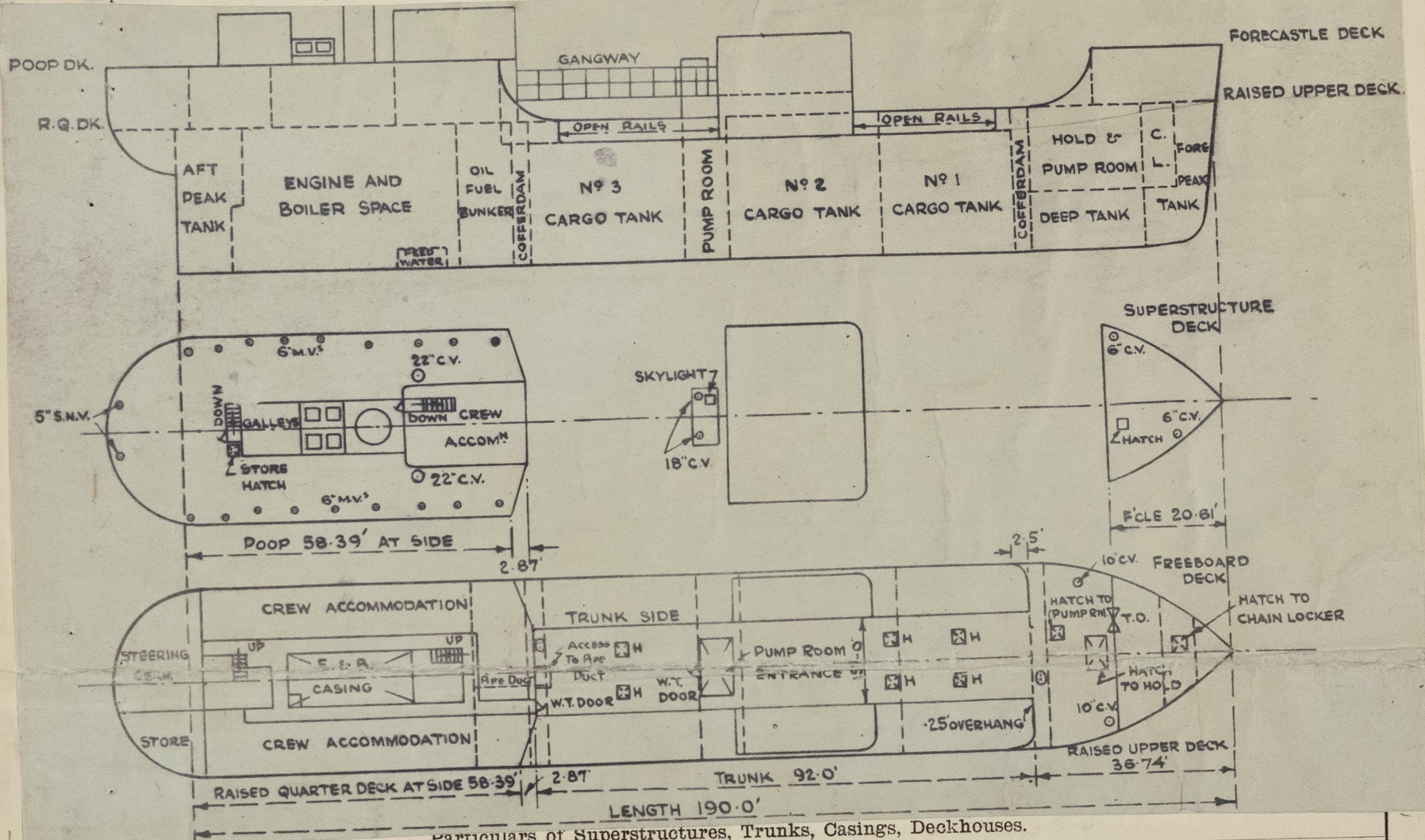
Lloyd's Register of Shipping.

SURVEYS FOR FREEBOARD.

(CONDITIONS OF ASSIGNMENT.)

Ship's Name *"EMPIRE GROSVENOR"*Port of Survey *Glasgow.*Official Number *169457*Surveyor's Signature *J. Dickerson*Nationality and Port of Registry *British, Glasgow.*Date of Survey *Whilst building.*

Disposition and dimensions of superstructures, trunks, deckhouses and machinery casings to be inserted in the diagrams and tabular statement: --



Particulars of Superstructures, Trunks, Casings, Deckhouses.

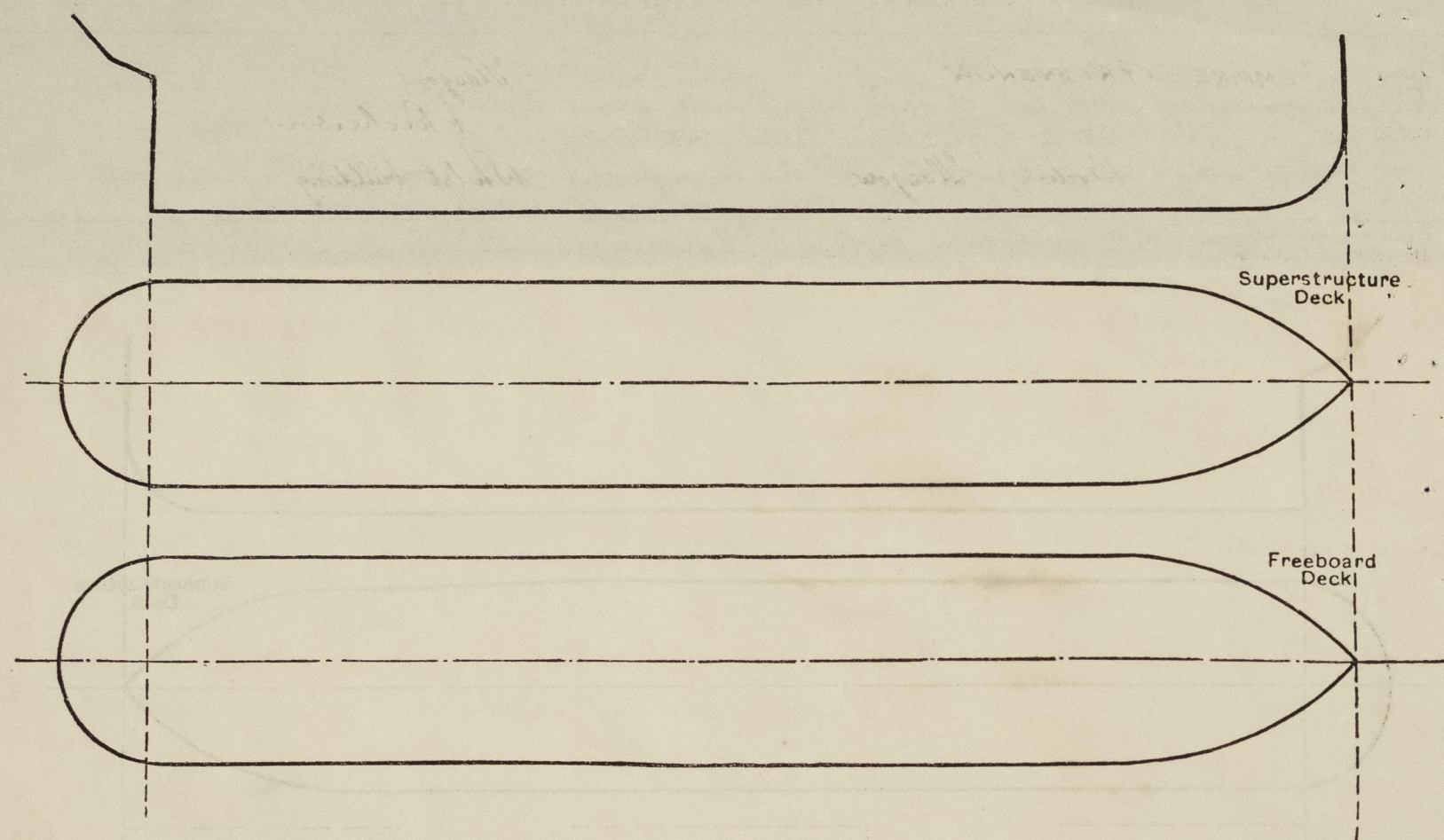
	Coaming	Plating	Stiffeners	Spacing	End Attachments of Stiffeners	Size of Openings	Height of Sills	Height of Casings
Poop Bulkhead ...	✓	.30	6x3 1/2 x 44 B.A.	27"-30"	Top: lugged. Bot: lugged & bolted.	5'-0" x 2'-0"	18"	7'-6"
Raised Quarter Deck Bulkhead (at side of trunk.)	✓	.30	3x30 flat.	34"	None.	✓	✓	2'-9"
Bridge, After Bulkhead	✓	.36	✓	✓	✓	✓	✓	2'-9"
RAISED UPPER DECK BND. FORD.	✓	.30	3x30 O.A.	30"	Bolted T & B.	5'-0" x 4'-0"	15"	7'-0"
Bridge, Forward Bulkhead	✓	.25 centre .30 side	35 flanged with sp. 7'-6" x 9'-4 1/2"	30"	Welded 2R	✓	✓	2'-9"
Fore-castle Bulkhead	.30	.35	with intermediate bto. 35 thick to transverse	7'-6" x 9'-4 1/2"	Bracketed.	See particulars of hatches.	✓	2'-9"
Trunk, Aft35	✓	Transverse 11x35-16.4"	28 1/2"	✓	✓	✓	✓
Trunk, Forward	.35	.40	7x3x36 B.A. long.	28 1/2"	✓	✓	✓	✓
Exposed Machinery Casings on Free-board or Raised Quarter Decks	Not exposed.							
Exposed Machinery Casings on Super-structure Decks								
Machinery Casings within Superstructures not fitted with Class I Closing Appliances								
Deckhouses on Flush Deck Ships								

Particulars of Closing Appliances (state if capable of being manipulated from both sides).

Poop Bulkhead	Steel hinged W.T. door, operated from both sides.
Raised Quarter Deck Bulkhead	✓
Bridge, After Bulkhead	✓
RAISED UPPER DECK BND. FORD.	✓
Bridge, Forward Bulkhead	✓
Fore-castle Bulkhead	.40" steel plate cover secured by hook bolts spaced 12" apart.
Exposed Machinery Casings on Free-board or Raised Quarter Decks	✓
Exposed Machinery Casings on Super-structure Decks	✓
Machinery Casings within Superstructures not fitted with Class I Closing Appliances	✓
Deckhouses on Flush Deck Ships	✓

PARTICULARS OF PROTECTION TO OPENINGS, ETC.

The following diagrams should be used to indicate the positions of cargo and coaling hatchways, gangway, cargo and coaling ports, ventilators, companionways, etc., which would affect the seaworthiness of the ship:—



Particulars of fiddle, funnel and ventilator coamings, engine room skylight and other openings in machinery casing tops and their means of closing:—

Engine Room skylight on poop deck of steel, strongly constructed; openings 14" above poop d.k.
Funnel on poop deck of efficient construction.
No fiddle openings.
Ventilators to boiler room on Poop Deck:— see below.

Particulars of Flush Bunker Scuttles:— None.

Particulars of Companionways:— To crew accommodation in house on Poop D. (forward); wood door 4'-9" x 1'-10", operated from both sides, sill 16" above deck; and in house on Poop D. (aft); wood door 4'-9" x 1'-10", operated from both sides; sill 18" above deck.
Main pump room entrance on trunk top, of steel, strongly constructed. Opening in after end, 4'-6" x 2'-0", sill 18" above trunk top. Steel hinged W.T. door, operated from both sides.

Particulars of Ventilators in exposed positions on freeboard and superstructure decks:—

File deck. 2 @ 6" dia. C.V. to file. Boamings 18" x 30". 30" dia.
Raised Upper deck. 2 @ 10" dia. C.V. to cargo hold. Boamings 36" x 32".
Poop deck. 2 @ 22" dia. C.V. to stokehold. Boamings 44" x 40" stayed.
18 @ 6" dia. screw-down mushroom vents to crew spaces. Boamings 6" x 30".
2 @ 5" dia. S.N.V. to steering gear space. 18" high to opening.
1 @ 5" dia. S.N.V. to drying room. 18" high to opening.
All cow vents constructed to Rule requirements and fitted with wood plugs and canvas covers.

Particulars of Air Pipes in exposed positions on freeboard, raised quarter, or superstructure decks:—

File Dk. 1 @ 4" dia. to fore peak; 18" high to opening.
Raised Upp. Dk. 2 @ 4" dia. to deep tank; 25" high to opening.
2 @ 4" dia. to For. Coffin; 18" high to opening.
Trunk Top. 2 @ 3" dia. to After Coffin; 18" high to opening.
2 @ 3" dia. to Out. Fuel Bunkers; opening 8'-6" above trunk top, secured to poop front.
Poop Deck. 2 @ 2" dia. to Feed Water Tank; 18" high to opening.
2 @ 4" dia. to Aft Peak; 18" high to opening.
All air pipes fitted with gauges.

Particulars of Gangway Cargo and Coaling Ports:—

None.

Empire Grosvenor.

Particulars of Scuppers and Sanitary Discharge Pipes:—

Scuppers from poop deck led through ship's side above R.Q.D.
" " R.Q.D. led to E.Rm. bilge; fitted with screw plugs.
" " W.C.s & washbasins on R.Q.D. led through ship's side below R.Q.D. & fitted with storm valves at outlets. double?
Discharges from W.C.s & washbasins on R.Q.D. led through ship's side below R.Q.D. & fitted with single storm valves at outlets. Storm valves of fabricated mild steel, galvanized.
Scuppers from steering gear space on R.Q.D. led through deck to W.T. compartment abaft aft peak. (drained by hand pump.)

Particulars of Side Scuttles:—

In poop - 10" dia.
Sidelights of substantial construction and fitted with hinged deadlights.

Vertical distance of Sill of lowest Side Scuttle above top of keel None below freeboard deck.

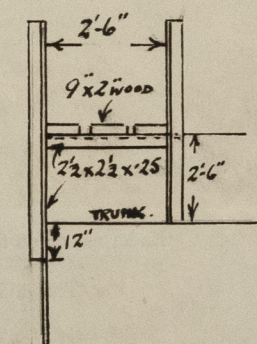
Particulars of Guard Rails:—

File Deck. Open rails, 3'-6" high, with 3 rods, stanchions 4'-0" to 5'-6" apart.
Raised Upp. Dk. for d. " " " " 2 " " 4'-0" " "
Upper Deck. " " " " 3 " " 4'-6" to 5'-0" "
Trunk Top. " " " " 2 " " 4'-0" " 4'-6" "
Poop Deck. " " " " 3 " " 4'-6" "

Particulars of Gangways, Lifelines, etc.:—

Gangway between Poop and Bridge House.
(starboard side.)

SUPPORTS SPACED
3'-6" TO 4'-6" APART.
UPPER DECK.



Particulars of Freeing Arrangements.

	Length of Bulwark	Height of Bulwark	Size of Freeing Ports	Number each side	Area each side	Rule area each side
After Well	10'-6"	4'-3"	moving pipe 10' x 8" freeing port. 30' x 7"	1 1	.45 sq' 1.45 sq'	
Forward Well	2'-6"	3'-0"	None.			

State position of each freeing port Bulwark. 1'-0" from poop front; 1/2" above deck edge.
(F. and A. position and height above deck edge) (After Well:—
Forward Well:—

State whether the freeing ports are fitted with shutters, bars, or rails, and give particulars of such:— ✓

Additional area where sheer is less than standard.

PARTICULARS OF PROTECTION TO OPENINGS, ETC.

HATCHWAYS ON FREEBOARD AND SUPERSTRUCTURE DECKS.									
<div> <div>RAISED UPPER DECK</div> <div>TRUNK TOP</div> <div>POOP DECK</div> <div>FORE DECK</div> </div>									
Description of Hatchway	To Chain locker	To Cargo Hold.	To Pump Rm. forward	To fore. cofferdam	To Cargo oil tanks	To after cofferdam	To pipe duct	To Stores	To fore. space.
Dimensions of Hatchway	2'0" x 1'7"	3'9" x 5'0"	2'6" x 2'0"	1'12" x 1'27"	2'6" x 2'6" 3P+3S.	1'7" x 1'1"	3'6" x 2'6"	2'3" x 2'1"	1'10" x 1'6"
COAMINGS	Coaming 9x3x40 B.A.	Coaming 9x3x40 B.A.	Coaming 9x3x40 O.A.	Coaming 9x3x40 O.A. welded to on.	Coaming 10x3x40 B.A.	Coaming 9x3x40 O.A. welded to on.	Coaming in trunk top 2'1"x1'2"	Coaming 18" high x40 thick	Coaming 3'x40 flat welded to deck.
HATCH BEAMS		40 steel plate cover secured by toggles spaced 14" apart.	25 steel plate cover secured by toggles spaced 15" apart.	40 steel plate cover secured by tap bolts spaced 3 1/2" apart.	50 steel plate cover secured by toggles spaced 13" apart.	40 steel plate cover secured by tap bolts spaced 3 1/2" apart.	18" high x30 thick steel plate cover secured by tap bolts spaced 3 1/2" apart.	steel plate cover .25 thick secured by toggles spaced 18" apart.	steel plate cover .25 thick secured by toggles 15" apart.
FORE AND AFTERS									
HATCH COVERS	Material ... W.P.	Thickness ... 2 1/2"	How fitted ... slab	Bearing Surface ... 3"					
Spacing of Cleats	12"-15"								
Number of Tarpaulins	2.								
<p>*Are wood fore and afters steel shod at all bearing surfaces? <input checked="" type="checkbox"/></p> <p>Are battens and wedges efficient and in good condition? <input checked="" type="checkbox"/></p> <p>Are tarpaulins in good condition and in accordance with rule requirements? <input checked="" type="checkbox"/></p> <p>Are lashings provided in accordance with rule requirements? <input checked="" type="checkbox"/></p> <p style="text-align: right;">At chain locker hatch. Yes. " " " " Yes.</p>									

Particulars of any special features:—

Endorsement at first survey and at surveys for renewal of Certificate:—

The fittings and appliances are in accordance with the particulars shown on this form (or as now modified) and are in good condition.



© 2021

Lloyd's Register Foundation