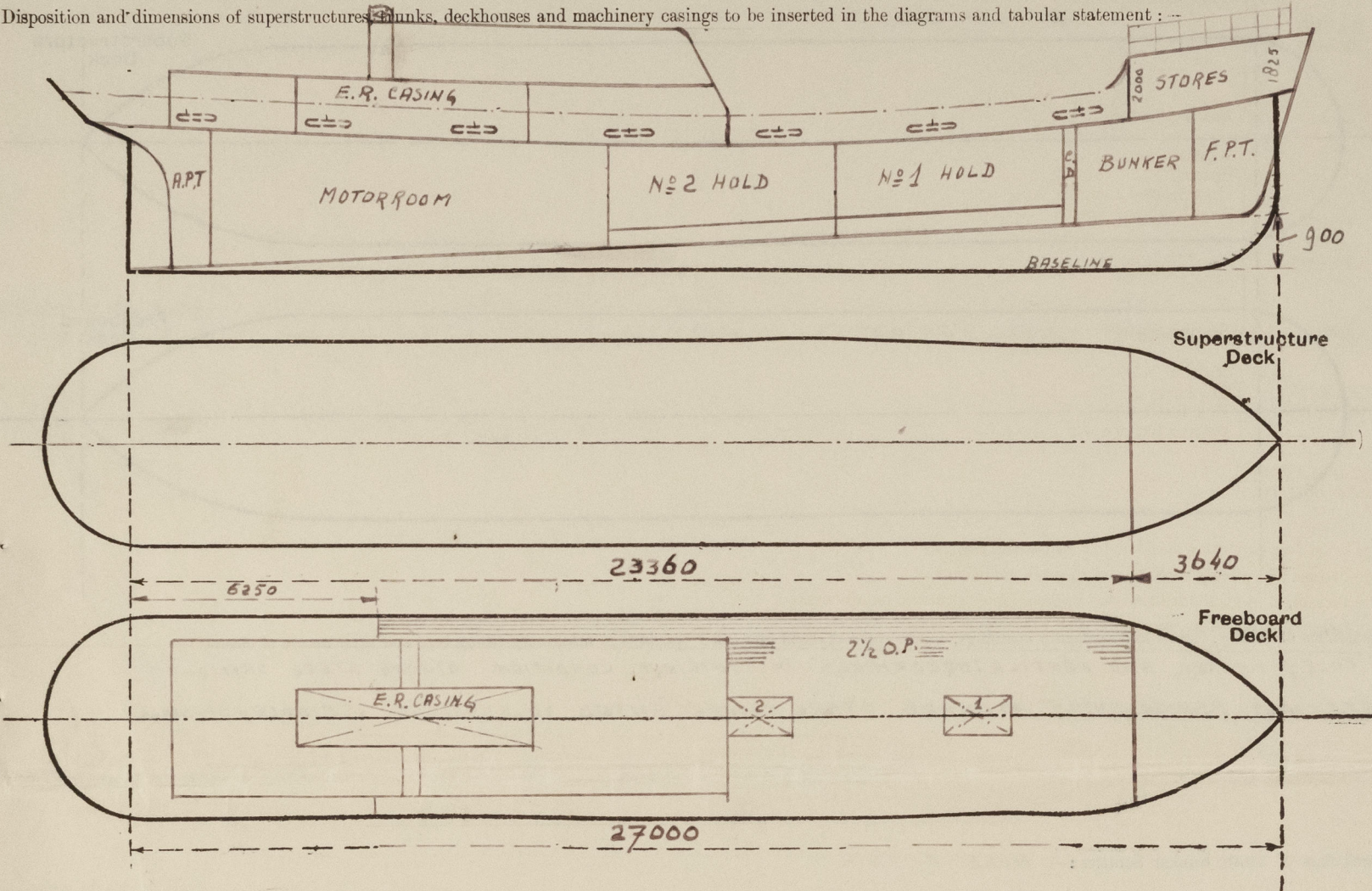


Lloyd's Register of Shipping.  
SURVEYS FOR FREEBOARD.  
(CONDITIONS OF ASSIGNMENT.)

Index No. 39947  
(For London Office only).  
F3 DEC 1948  
Rpt. No. 299.

Ship's Name MOTORTRAWLER "GORAZ" Port of Survey GRONINGEN  
Official Number \_\_\_\_\_ Surveyor's Signature [Signature]  
Nationality and Port of Registry PORTUGUESE, FIGUEIRA DA FOZ Date of Survey OCTOBER 1948

Disposition and dimensions of superstructures, trunks, deckhouses and machinery casings to be inserted in the diagrams and tabular statement:

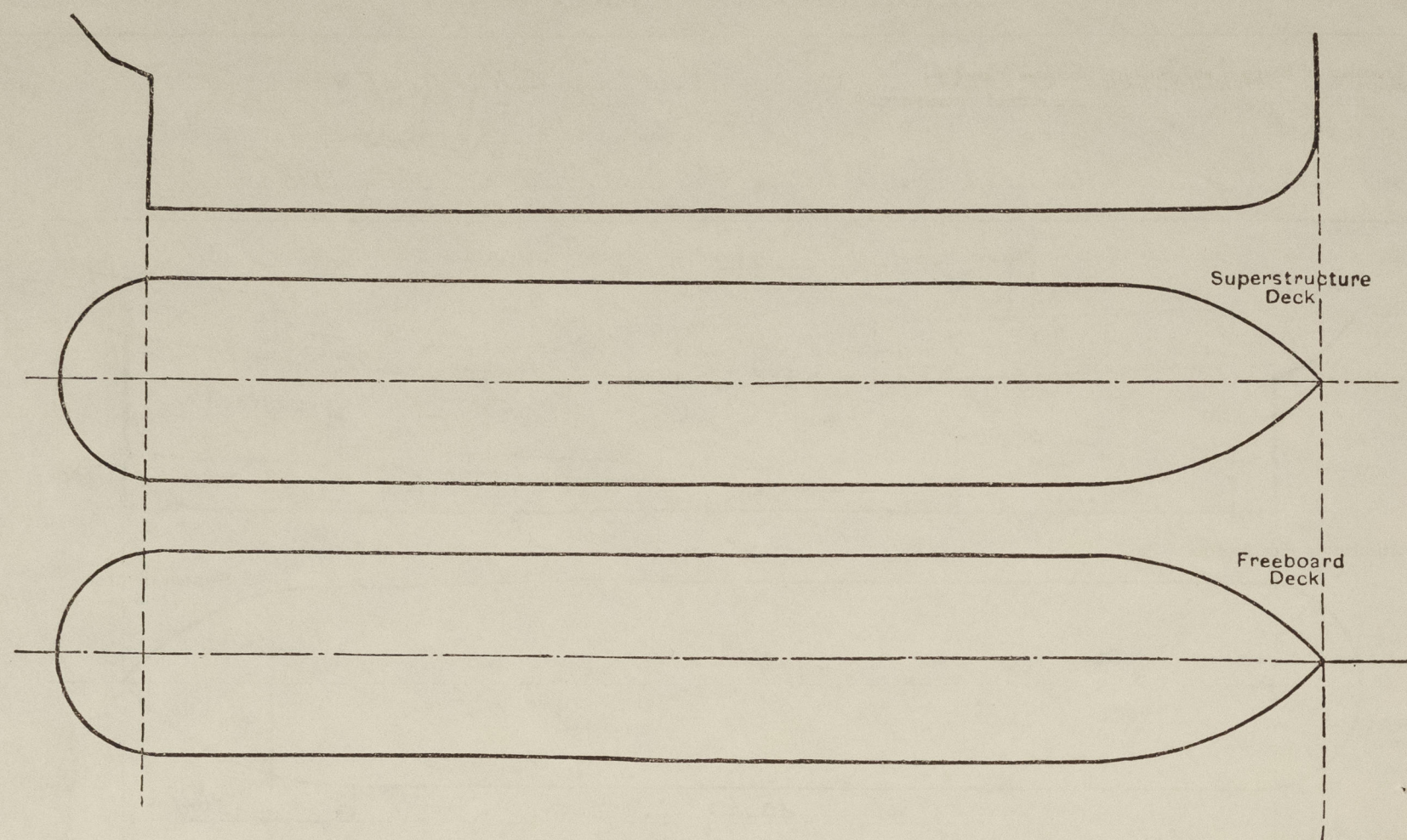


Particulars of Superstructures, Trunks, Casings, Deckhouses.								
	Coaming	Plating	Stiffeners	Spacing	End Attachments of Stiffeners	Size of Openings	Height of Sills	Height of Casings
Poop Bulkhead ... ..	—							
Raised Quarter Deck Bulkhead ...	—							
Bridge, After Bulkhead ... ..	—							
Bridge, Forward Bulkhead ... ..	—							
Forecastle Bulkhead ... ..	6 1/2 ✓	6 1/2 ✓	90 x 75 x 8 ✓	610 ✓	E.W.	2. 1290 x 680	380 ✓	2000/11825 ✓
Trunk, Aft ... ..	—							
Trunk, Forward ... ..	—							
Exposed Machinery Casings on Freeboard or Raised Quarter Decks ...	—							
Exposed Machinery Casings on Superstructure Decks ... ..	—							
Machinery Casings within Superstructures not fitted with Class I Closing Appliances ... ..	6 ✓	6 ✓	80 x 55 x 7 ✓	520 ✓	NONE	2. 1800 x 620	620 ✓	CONTIN. ✓
Deckhouses on Flush Deck Ships ...	—							
Particulars of Closing Appliances (state if capable of being manipulated from both sides).								
Poop Bulkhead ... ..	—							
Raised Quarter Deck Bulkhead ...	—							
Bridge, After Bulkhead ... ..	—							
Bridge, Forward Bulkhead ... ..	—							
Forecastle Bulkhead ... ..	STRONG STEEL HINGED DOORS, OPERATED FROM BOTH SIDES. ✓							
Exposed Machinery Casings on Freeboard or Raised Quarter Decks ...	—							
Exposed Machinery Casings on Superstructure Decks ... ..	—							
Machinery Casings within Superstructures not fitted with Class I Closing Appliances ... ..	STRONG STEEL HINGED DOORS, OPERATED FROM BOTH SIDES ✓							
Deckhouses on Flush Deck Ships ...	—							



# PARTICULARS OF PROTECTION TO OPENINGS, ETC.

The following diagrams should be used to indicate the positions of cargo and coaling hatchways, gangway, cargo and coaling ports, ventilators, companionways, etc., which would affect the seaworthiness of the ship:—



Particulars of fiddle, funnel and ventilator coamings, engine room skylight and other openings in machinery casing tops and their means of closing:—  
 FIDDLE, FUNNEL AND VENTILATOR COAMINGS IN EFFICIENT CONDITION. STRONG STEEL SKYLIGHT. ✓  
 EFFICIENT PERMANENTLY ATTACHED STEEL COVERS FITTED TO SKYLIGHT & FIDDLE OPENINGS. ✓

Particulars of Flush Bunker Scuttles:— NONE FITTED. ✓

Particulars of Companionways:—

IN STEEL DECKHOUSE: STEEL HINGED DOORS, OPERATED FROM BOTH SIDES, SILLS 820 ✓

Particulars of Ventilators in exposed positions on freeboard and superstructure decks:— NONE FITTED. ✓

Particulars of Air Pipes in exposed positions on freeboard, raised quarter, or superstructure decks:—

ON FORECASTLE: 2 AIRPIPES, HEIGHT 460 1  
 ON FREEBOARD DECK: 0 " " 920 ✓

WOOD PLUGS SUPPLIED FOR ALL GOOSENECK AIRPIPES; REMAINDER FITTED WITH PATENT GASCAPS ✓

Particulars of Gangway Cargo and Coaling Ports:— NONE FITTED ✓

Particulars of Scuppers and Sanitary Discharge Pipes:—

W.C.'S DISCHARGE THROUGH BRASS SCREW DOWN M.R. VALVES AT SHIP'S SIDE IN ENGINE ROOM IN READILY ACCESSABLE POSITION. INDICATOR OPEN/SHUT FITTED. ✓  
 WASH BASINS DISCHARGE THROUGH PIPES, FITTED WITH BRASS STORMVALVE AND LOCK. ✓

Particulars of Side Scuttles:—  
 IN FORECASTLE ONLY; ALL OF SUBSTANTIAL CONSTRUCTION AND FITTED WITH STRONG HINGED DEADLIGHTS. ✓

Vertical distance of Sill of lowest Side Scuttle above top of keel ALL ABOVE UPPERDECK. ✓

Particulars of Guard Rails:—

FORECASTLE: OPEN RAIL, 970 HIGH, 3 RODES, STANCHIONS 1040 APART. ✓  
 FREEB. DECK: STEEL BULWARK, 980 HIGH, EFFICIENTLY SUPPORTED. ✓

Particulars of Gangways, Lifelines, etc.:—

LIFELINES CAN BE RIGGED OVER FREEBOARD DECK. ✓

## Particulars of Freeing Arrangements.

	Length of Bulwark	Height of Bulwark	Size of Freeing Ports	Number each side	Area each side	Rule area each side
After Well FREEB. DECK.	23360	980	810 x 325	7	1.843 m <sup>2</sup>	1.180 m <sup>2</sup> for 76.
Forward Well ...						

State position of each freeing port SKETCH... { After Well:— 170 ✓  
 (F. and A. position and height above deck edge) { Forward Well:—

State whether the freeing ports are fitted with shutters, bars, or rails, and give particulars of such:— 5 HORIZONTAL 7/8" BARS IN EACH FR. PORT. ✓

Additional area where sheer is less than standard.



© 2020

Lloyd's Register Foundation



PARTICULARS OF PROTECTION TO OPENINGS, ETC.

HATCHWAYS ON FREEBOARD AND SUPERSTRUCTURE DECKS.									
Description of Hatchway			1	2					
Dimensions of Hatchway			680 x 1450	680 x 1470					
COAMINGS	{	Height above Deck	360 ↓	360 ↓					
		Thickness { Sides	8 ↓	8 ↓					
		{ Ends							
		Stiffeners .. AB ..	75 x 75 x 7 ↓	75 x 75 x 7 ↓					
Brackets, Stays			NONE ↓	NONE ↓					
HATCH BEAMS	{	Number							
		Spacing							
		Scantling and Sketch							
		Bearing Surface							
FORE AND AFTERS	{	Number							
		Spacing							
		Unsupported Lengths							
		Scantling* and Sketch							
Bearing Surface									
HATCH COVERS	{	Material	PINE ↓	PINE ↓					
		Thickness	65 ↓	65 ↓					
		How fitted	THWART SHIPS ↓	THWART SHIPS ↓					
		Bearing Surface	75 ↓	75 ↓					
Spacing of Cleats			440 ↓	440 ↓					
Number of Tarpaulins			2 ↓	2 ↓					
*Are wood <del>fore and afters</del> <sup>covers</sup> steel shod at all bearing surfaces? yes ↓									
Are battens and wedges efficient and in good condition? yes ↓									
Are tarpaulins in good condition and in accordance with rule requirements? yes ↓									
Are lashings provided in accordance with rule requirements? yes ↓									

Particulars of any special features :—

Endorsement at first survey and at surveys for renewal of Certificate :—

The fittings and appliances are in accordance with the particulars shown on this form (or as now modified) and are in good condition.

