

RE. APPROVED. 10th MARCH 1951.
 CIVIL ENGINEER REGISTER OF SURVEYING
 24 JAN 1951
 LONDON

3'-6"
 1'-0"
 CUT FROM CA 1/5
 7'-1" x 3'-4"
 1'-11 1/2"
 STIFFS, 3" x 1/4"
 1"

7/8" BOLTED FLANGE AFT END
 2 1/2" x 2 1/2" x 1/4" R446. FWD END

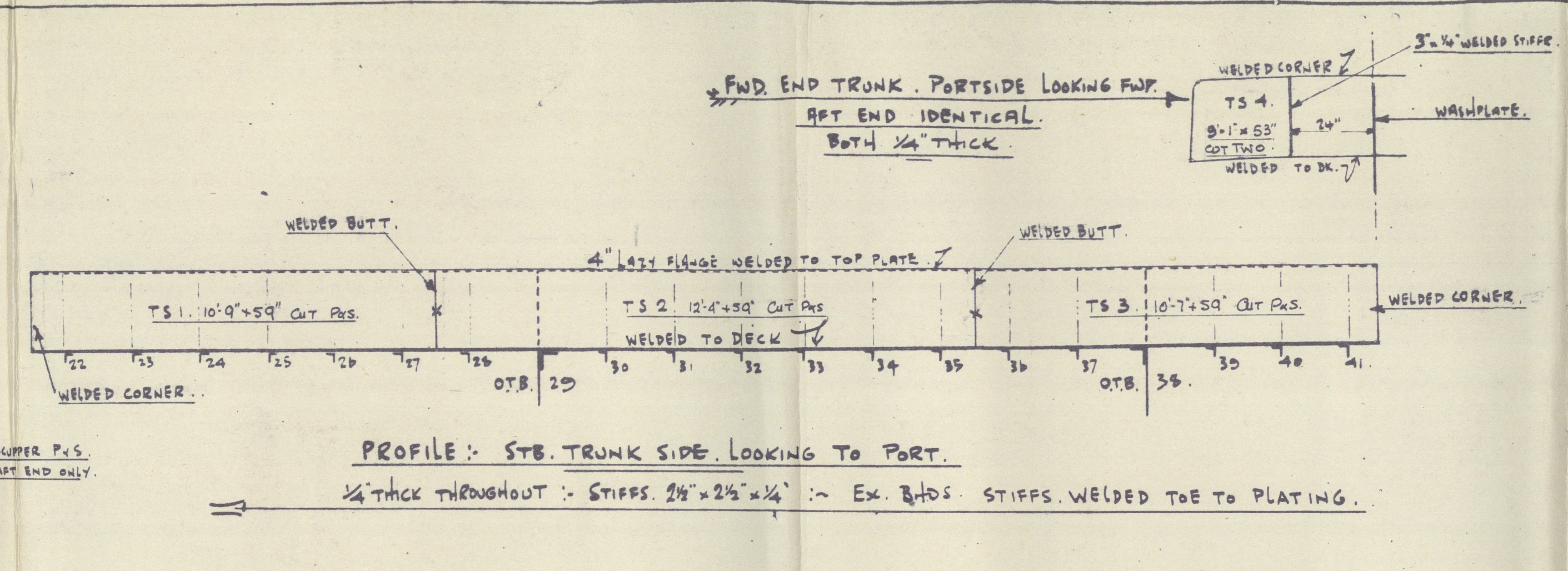
2 1/2" x 2 1/2" x 1/4"
 4'-0" P ONLY
 5' x 5' x 1/4" WEB
 WELDED CORNER
 W.T.L.
 7'-11" x 2'-0"
 24" x 16" CLEAR BOLTED DOOR
 1" D.D.
 WELDED CORNER
 WELDED
 4'-0" x 1/4" TO LIFT.
 2'-0"
 3'-6" x 8'-11"
 WELDED IN Bottom of GUNL

FR. 15 (PORT) LOOKING AFT.
 (NO WATER BUNKER STBP.)

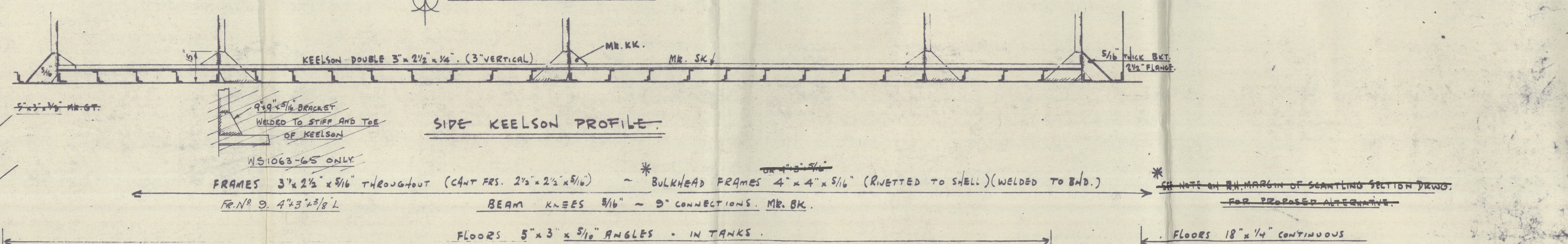
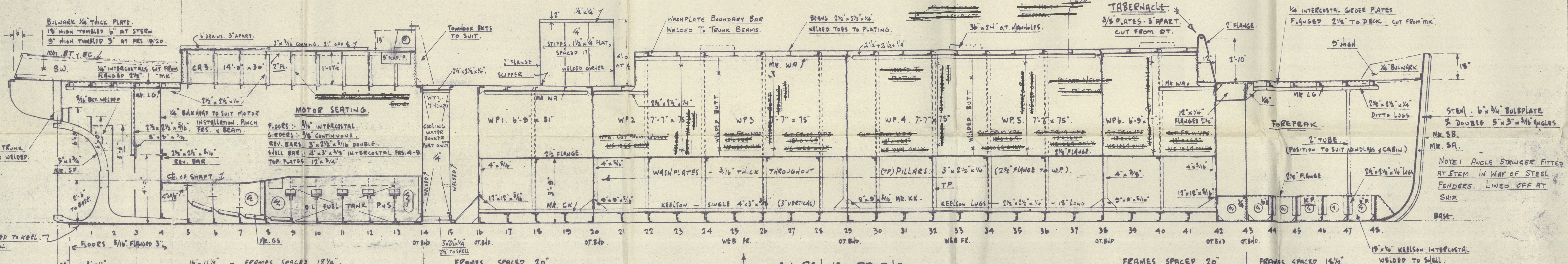
3'-6"
 4'-0" x 1/4" TO LIFT.
 1'-0"
 1'-11 1/2"
 15' x 16"
 DOOR P.S.
 12"
 1"

AFT END MOTOR CASING.
 PORT SIDE. LOOKING AFT.
 FORWARD END SIMILAR.
 BOTH 1/4" THICK.

AFT END OF WHEELHOUSE
 FWD END SIMILAR. NO DOORS



"KESTREL C"
MOTOR TANK BARGES
Nos. WS. 1047 [REDACTED]
STEELWORK.
SCALE: $\frac{3}{8}$ " = 1 ft.
~ LLOYD'S CLASS. ~
"A. BARGE" "CARRYING PETROLEUM IN BULK"
FOR CANAL & ESTUARY SERVICE



ELECTRIC WELDING.

ALL MATERIALS AND PLANT IN ACCORDANCE WITH LLOYD'S RULES.

GENERAL.

KEELSON BUTTS, SINGLY BUTTS. ∴ DOUBLE CONTINUOUS WELDS.
KEELSONS, GIRDERS TO BHDS, FLOORS ∴ STAGGERED INTERMITTENT
3" WELDS SPACED 4 1/2" CR TO CR.

KEELSONS, GIRDERS TO SHELL ∴ CHAIN WELDS 3" CR. TO CR.
WASH PLATES TO BHDS ∴ STAGGERED INTERMITTENT 3" WELDS
SPACED 6" CR. TO CR.

MOTOR CASING TOP SEAMS, ENDS TO DE. ∴ DOUBLE CONTINUOUS. 1/4"
WHEELHOUSE TO DE. ∴ DOUBLE CONTINUOUS. 1/4"
WHEELHOUSE, CAGING STIFFS ∴ STAGGERED INTERMITTENT 3" WELDS
SPACED 4" CR - CR.

BULWARK DE. BAR PRES. 14" x 20" ∴ DOUBLE CONTINUOUS.

FRAMING STR. SEE PARTS 11, 20, 24 "Machinery Support Frame".

WATER CARGO BENTS TO CARGO TR. STAGGERED INTERMITTENT
3" WELDS SPACED 7" CENTERED.

CAGING STIFFS TO CAGING SIDE STAGGERED INTERMITTENT
3" WELDS SPACED 7" CENTERED.

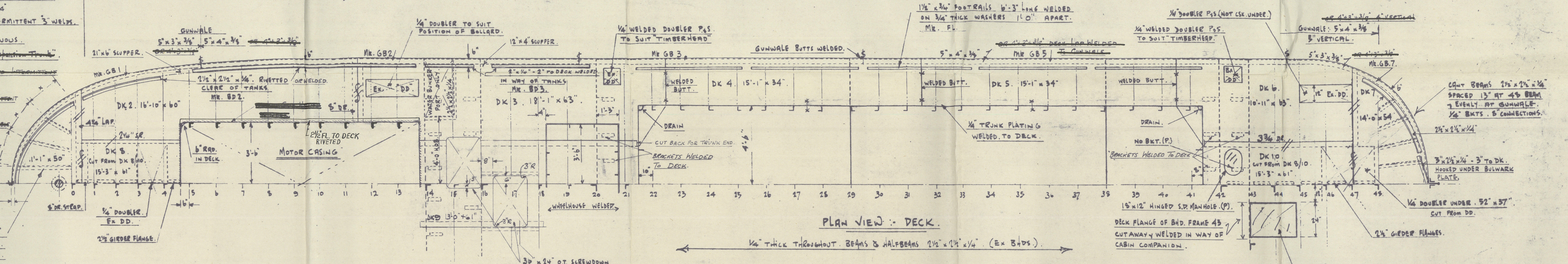
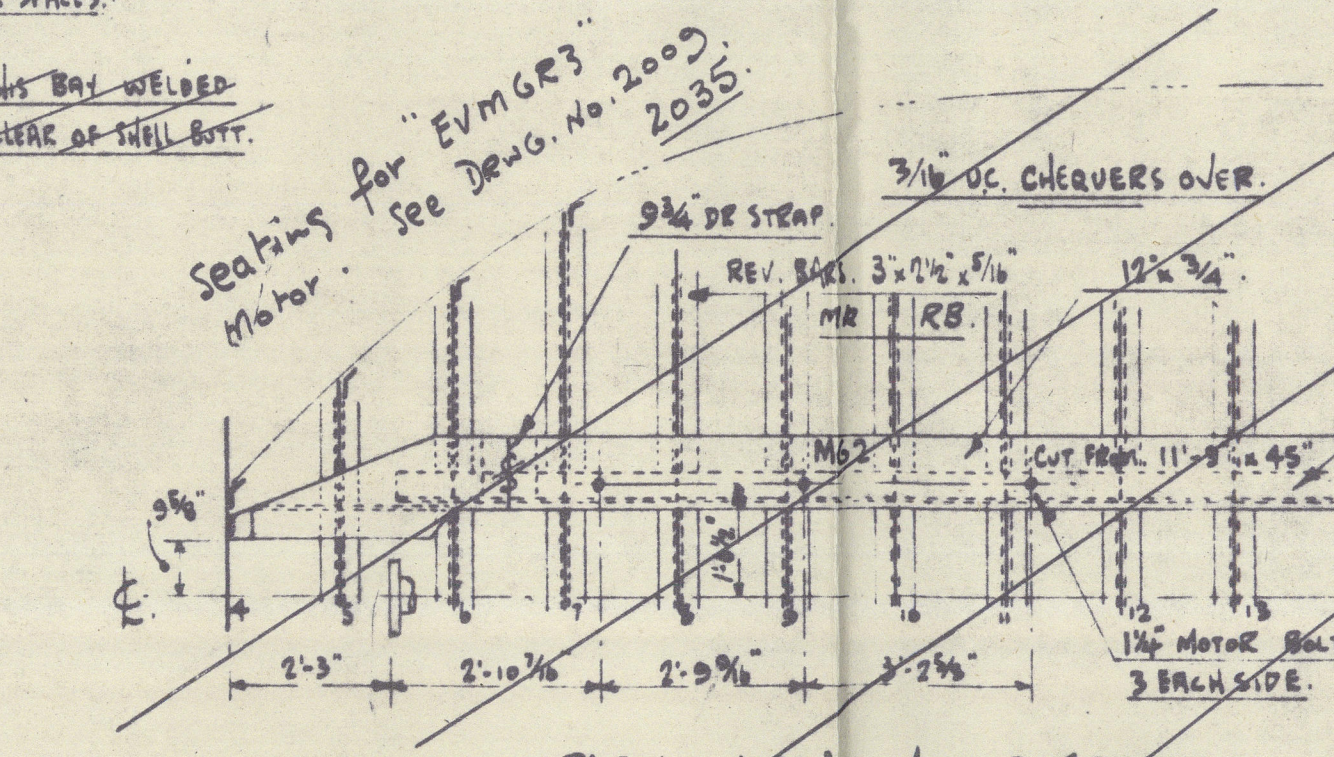
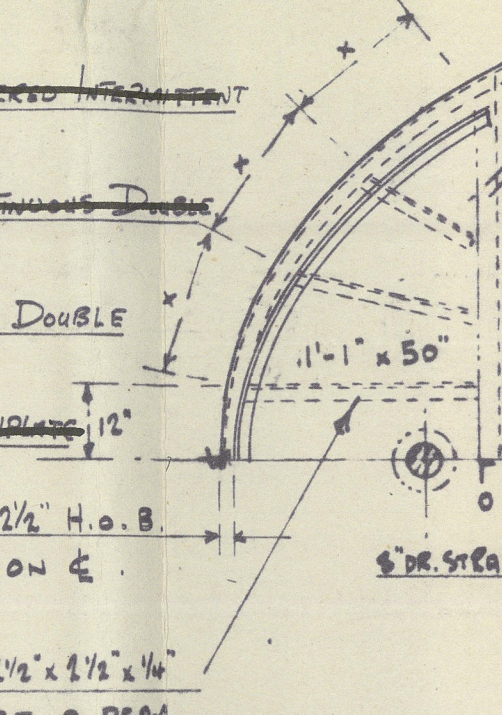
WATER CARGO SIDES TO DECK CONTINUOUS DOUBLE
FLUETS 1/4"

MOTOR CASING CORNERS CONTINUOUS DOUBLE
FLUETS 1/4"

WASH PLATE BOUNDARY PLATE TO WHEELHOUSE 1"
1" CHAIN WELDS

WASH PLATE BOUNDARY PLATE TO WASH PLATE
STAGGERED INTERMITTENT 3" WELDS
CENTERS.

CHART BEAMS 2 1/2" x 4 1/2" x 1/4"
SPACED 12" AT O BEAM.
AS SHOWN AT GUNWALE.



ELECTRIC WELDING CONT'D.

WASHPLATE BUTTS. SQ BUTTS NO 8 RUN EACH SIDE. 1/16" GAP.

DECK BUTTS: SQ BUTTS NO 6 RUN. EACH SIDE. 1/16" GAP.

5'-11"

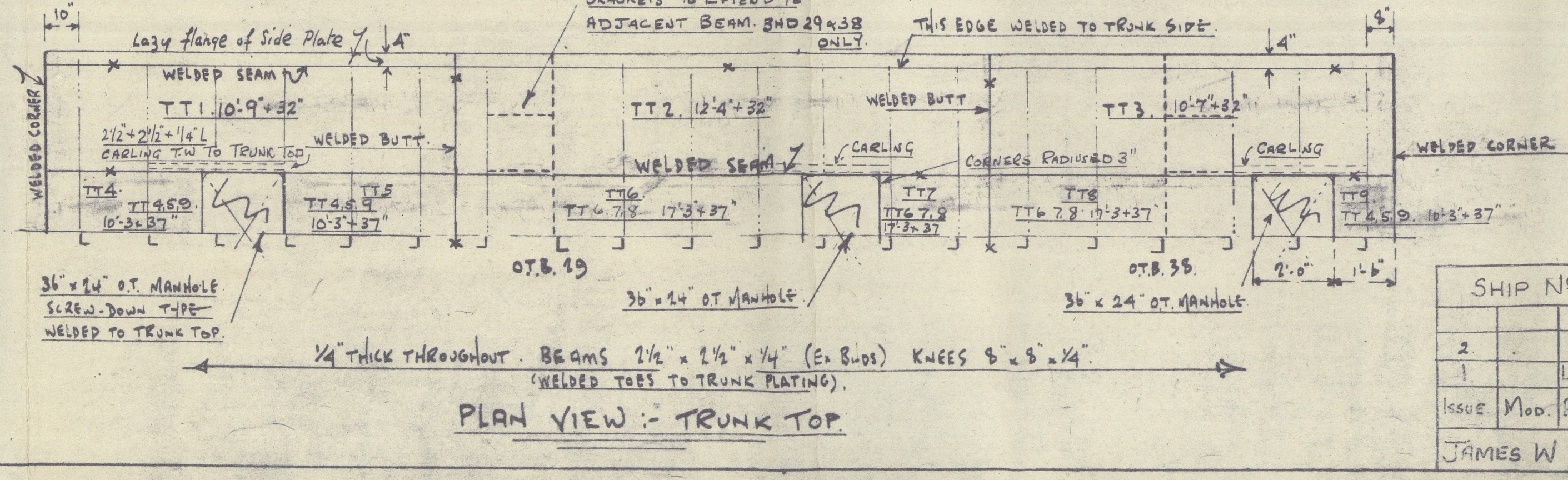
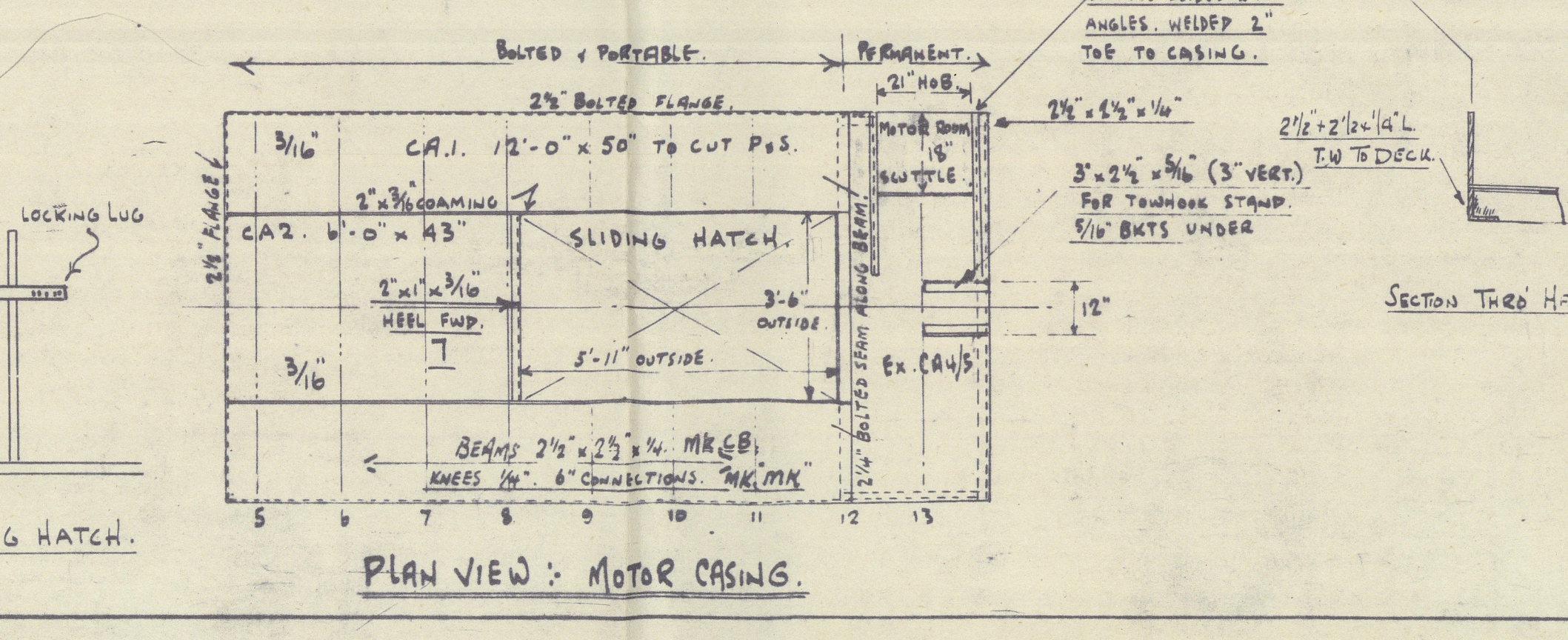
3/16" COVER

1" FLANGE AT SIDES

CASING
TOP.

DETAIL PROFILE OF SL
HALF PULL SIZE

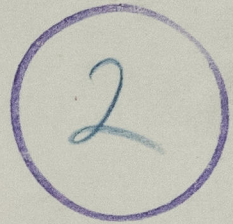
B.b2.



DRAWING No. 1047		NAME:-
CHECKED BY	TITLE:-	
DRAWN BY	GENERAL STEELWORK PLAN	
DATE	SCALE:- 3/8" To 1 Foot.	

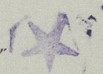
OK & C. (WIVENHOS) LTD WIVENHOS. DRAWING No 2014

RECORDS DEPT.
LONDON



Messrs. J. W. Cook & Co (Wivenhoe) Ltd

Yard No 1047

"KESTREL C" 

General Steelwork Plan. As Built.



© 2020

Lloyd's Register
Foundation

008401-008408-0076