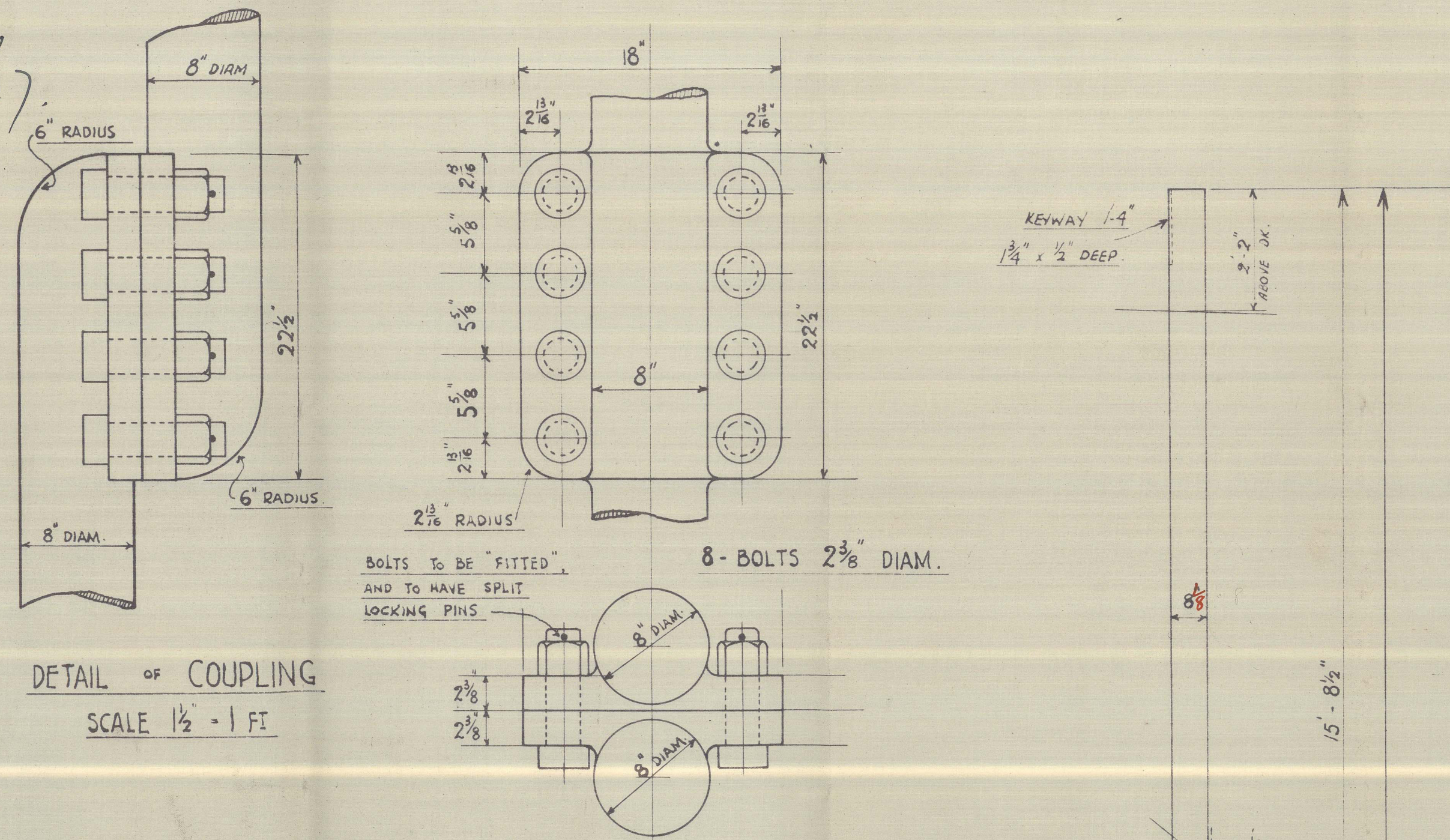
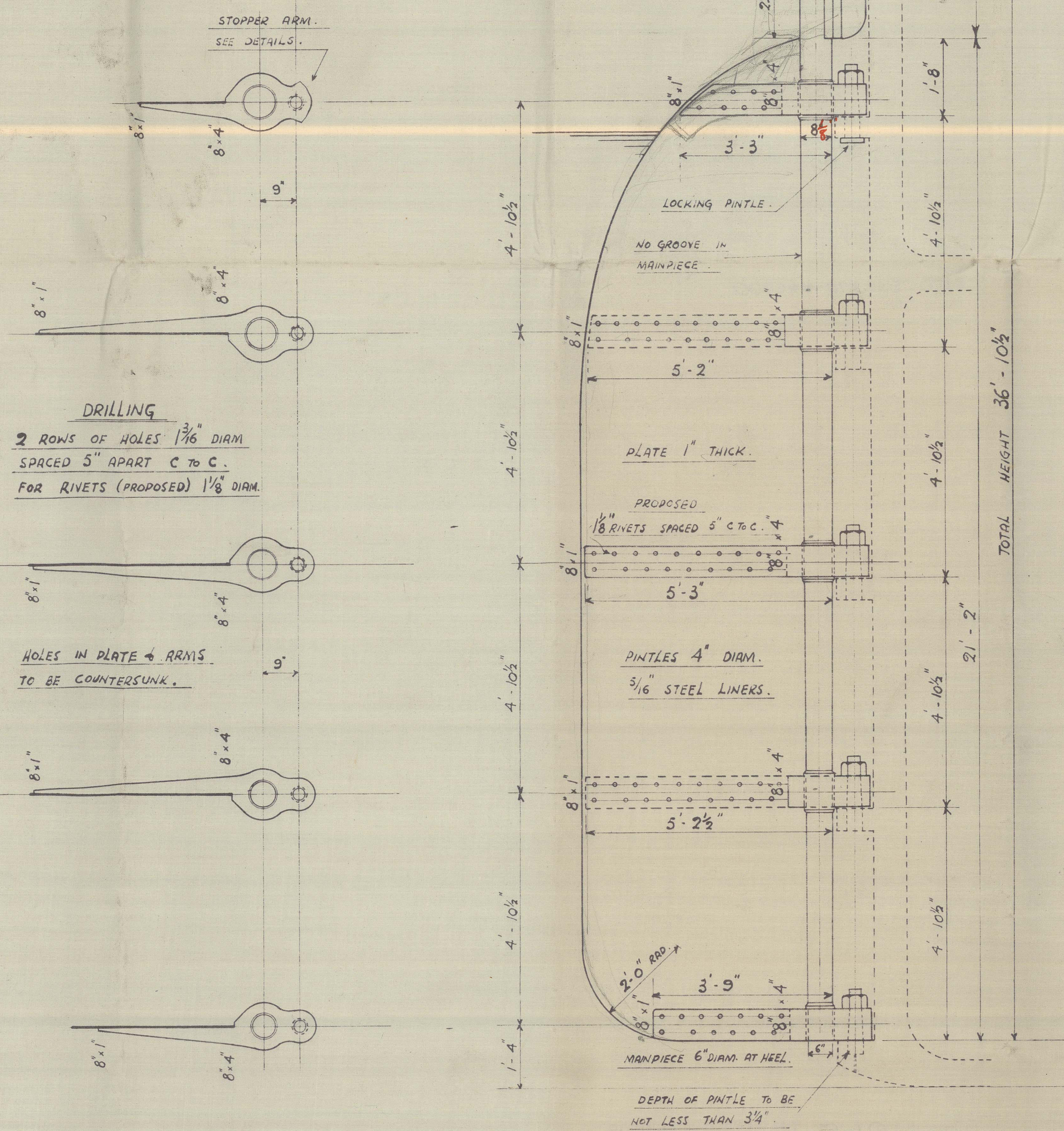


18/5/27



DETAIL OF COUPLING
SCALE $\frac{1}{2}$ \"/>



DRILLING
2 ROWS OF HOLES $\frac{3}{16}$ \"/>

HOLES IN PLATE & ARMS
TO BE COUNTERSUNK.

N^o 179 $\frac{5}{8}$ RUDDER FRAME.

SCALE $\frac{1}{2}$ \"/>

NUMERALS.

AREA = 101.89 Sq. Ft. = A

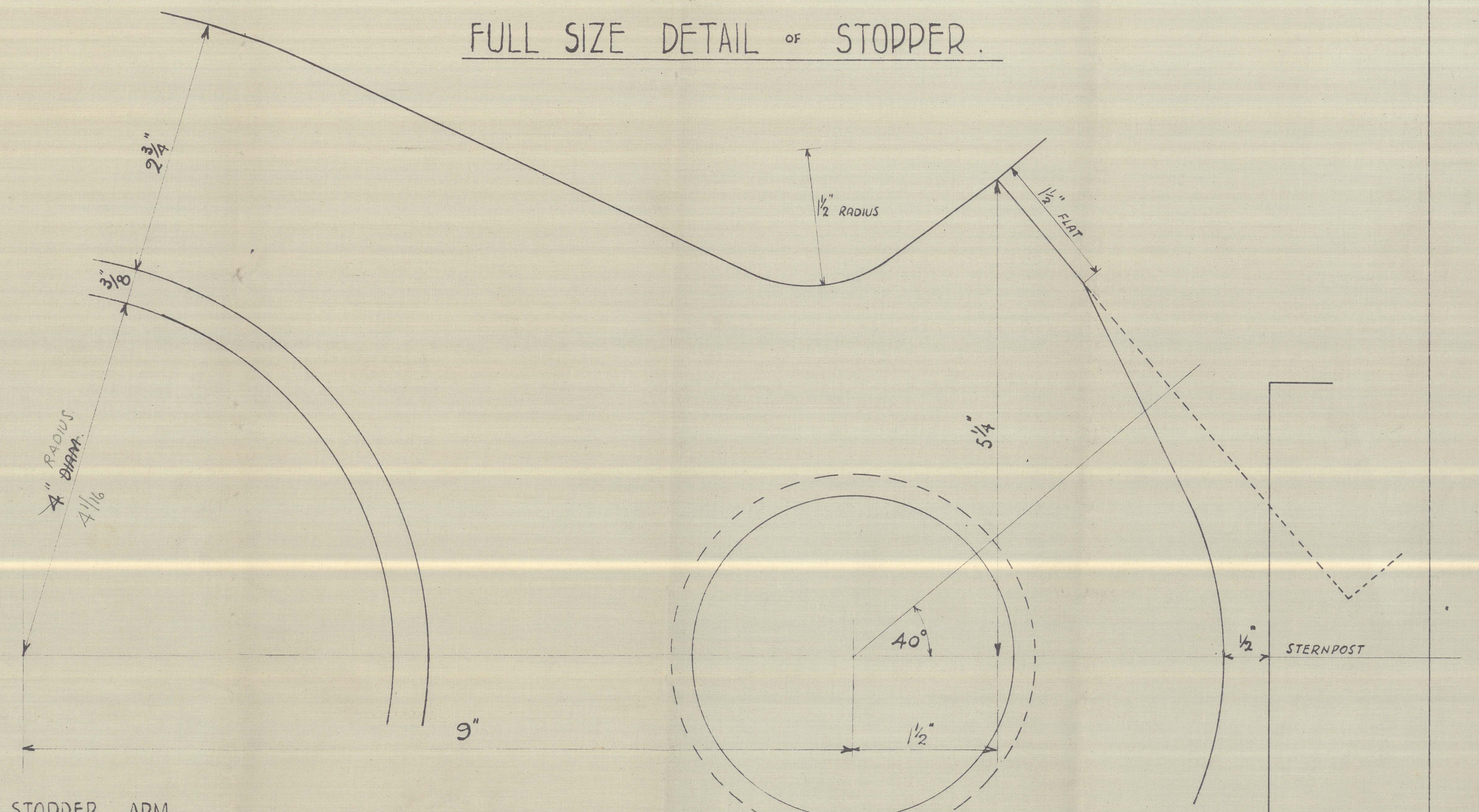
C.G. = 2.91 Ft. = D

A x D = 296.61

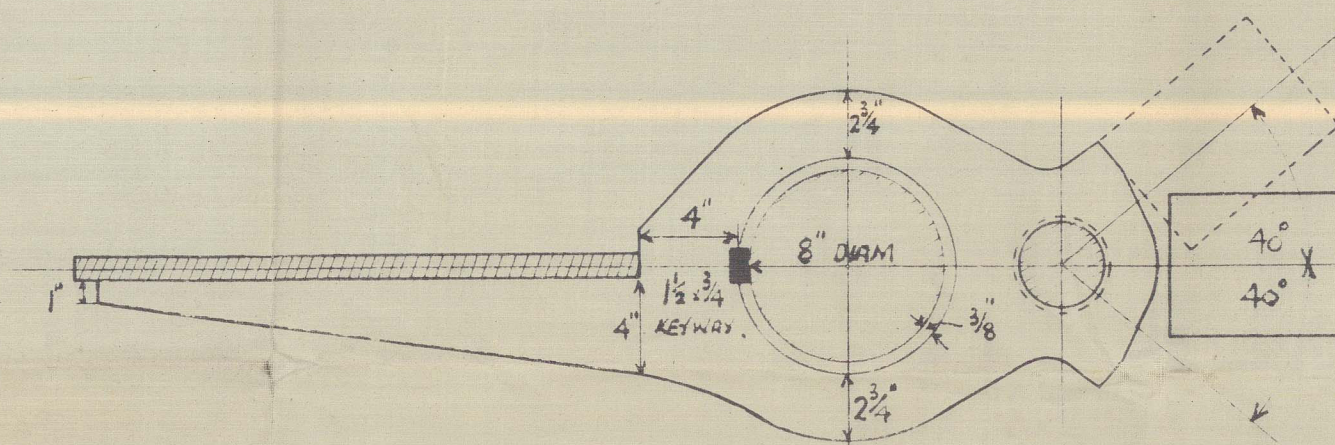
SPEED NOT EXCEEDING 10 KNOTS.

RUDDER H^o $\frac{8}{8}$ \"/>

FULL SIZE DETAIL OF STOPPER.

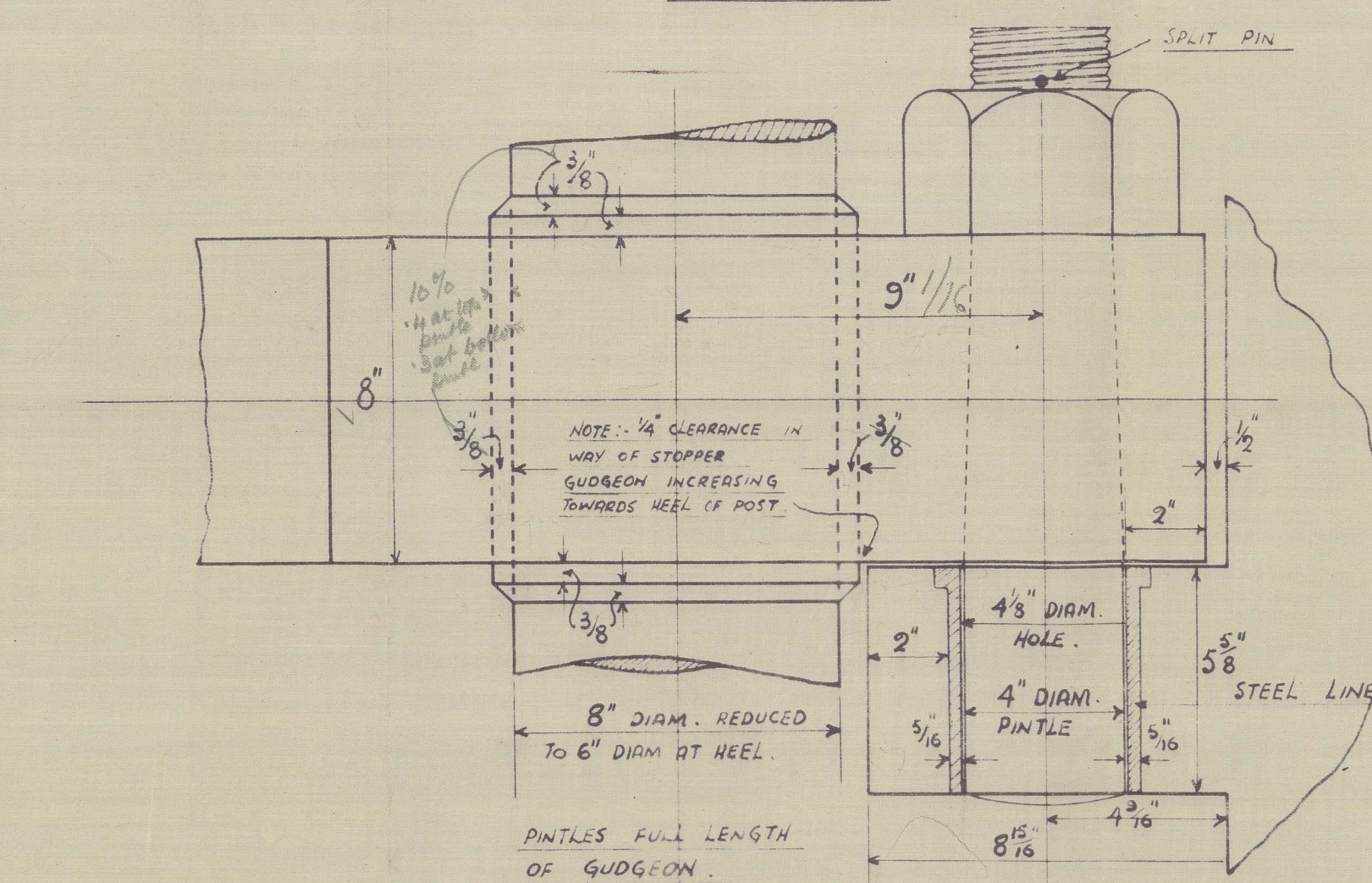


DETAIL OF STOPPER ARM.
SCALE $\frac{1}{2}$ \"/>



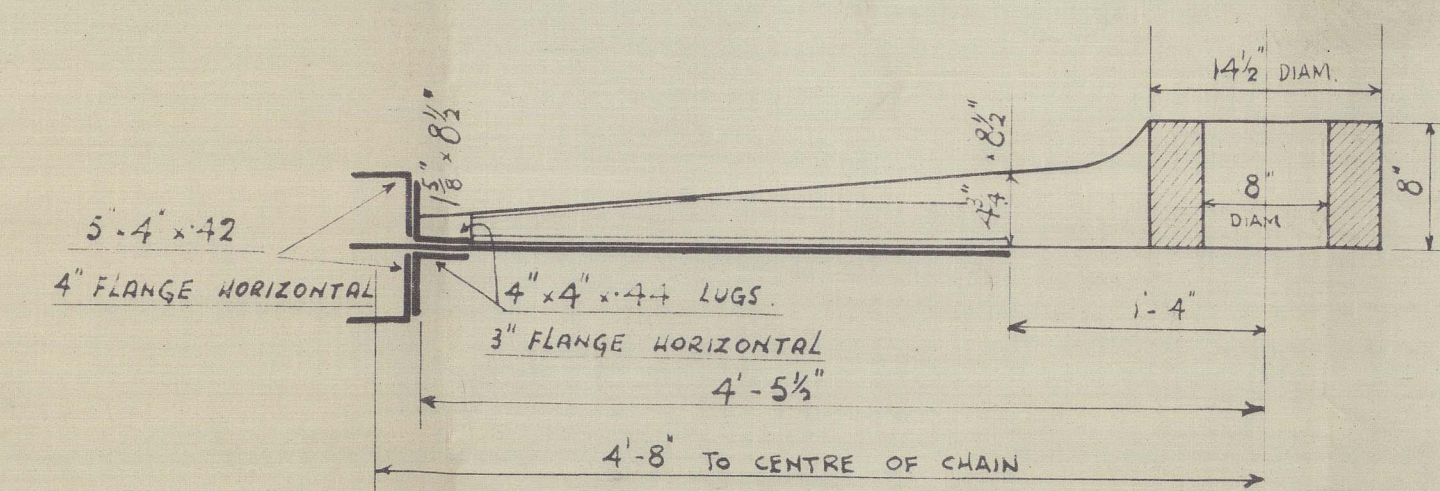
SKETCH SHOWING MAINPIECE INCREASED IN WAY OF ARMS.

SCALE $\frac{1}{4}$ \"/>



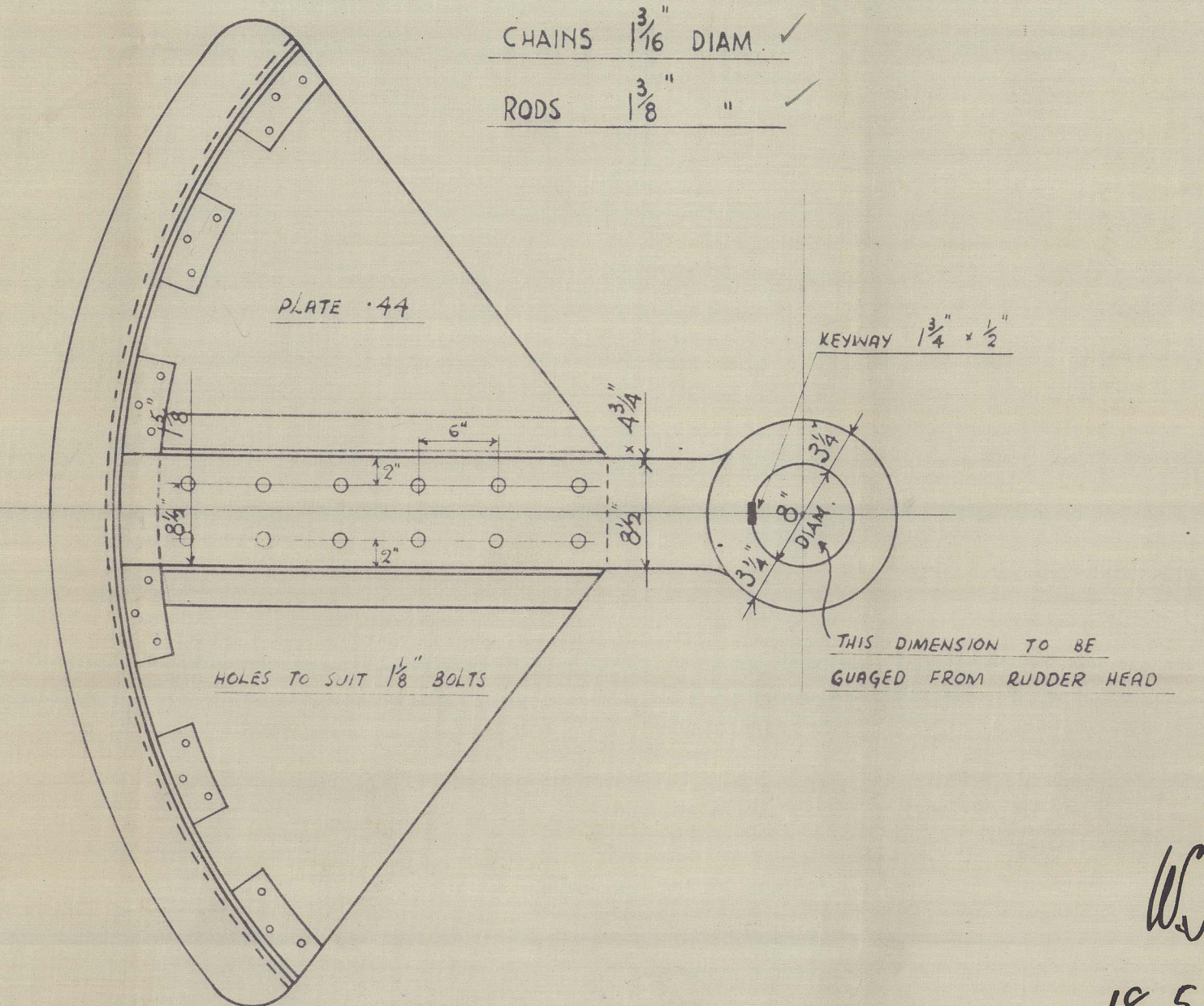
QUADRANT TILLER SCALE 1\"/>

AFTER STEERING ARRANGEMENT,
BY BLOCKS & TACKLE TO LLOYD'S
APPROVAL (PLAN TO BE SUBMITTED).



CHAINS $\frac{3}{16}$ \"/>

RODS $\frac{1}{8}$ \"/>



J. CROWN & SONS LTD.
SHIPBUILDERS & REPAIRERS
STRAND SLIPWAY
SUNDERLAND
13th MAY 1927

18.5.27

008344-008352(0)7

JOHN CROWN & SONS LD

SUNDERLAND

RUPPER & TILLER

NO 179.

S.S. "NEWTON ABBOT"

SUNDERLAND RPT. NO. 29611



© 2020

Lloyd's Register

008344-008353-0174