

END LAPS

SCHEME OF RIVETING.

ITEM	THICKNESS OF PLATING	DIA OF RIVETS	SPACING OF RIVETS	DIAM INCHES	NO OF LAPS	REMARKS
SHELL PLATING						
KEEL TO UPPER TURN BILGE (2 LEM)	UP TO 42	3/4	3 1/2	2 1/2	7 1/2	TREBLE
" " " " (ENDS)	36 TO 42	3/4	3 1/2	2 1/2	5	DOUBLE
BOSS PLATE	UP TO 42	3/4	3 1/2	2 1/2	7 1/2	TREBLE
FROM UPPER TURN OF BILGE TO	2 LEM UP TO 42	3/4	3 1/2	2 1/2	5	DOUBLE
STRAKE BELOW SHEERSTRAKE	ENDS UP TO 42	3/4	3 1/2	2 1/2	4 1/2	DOUBLE
" " " " (ENDS)	36 TO 42	3/4	3 1/2	2 1/2	7 1/2	TREBLE
BULKHEAD & FCL SIDE PLATING	UP TO 36	3/4	3 1/2	2 1/2	4 1/2	DOUBLE
CENTRE KEELSON & FOUNDATION	UP TO 48	3/4	3 1/2	2 1/2	5	DOUBLE
CENTRE GIRDER IN D.B. AFT	36 TO 48	3/4	3 1/2	2 1/2	7 1/2	TREBLE
FLAT PLATE KEEL FOR 2 LEM	UP TO 54	3/4	3 1/2	2 1/2	7 1/2	TREBLE
" " " " AT ENDS	UP TO 48	3/4	3 1/2	2 1/2	7 1/2	TREBLE
UPPER DECK STRINGER PLATE 2 LEM	UP TO 42	3/4	3 1/2	2 1/2	7 1/2	TREBLE
" " " " (ENDS)	UP TO 36	3/4	3 1/2	2 1/2	4 1/2	DOUBLE
FORECASTLE STRINGER PLATE	UP TO 36	3/4	3 1/2	2 1/2	4 1/2	DOUBLE
UPPER DECK PLATING FOR 2 LEM	UP TO 42	3/4	3 1/2	2 1/2	5	DOUBLE
" " " " AT ENDS	UP TO 36	3/4	3 1/2	2 1/2	2 1/2	SINGLE
INNER BOTTOM PLATING	UP TO 36	3/4	3 1/2	2 1/2	4 1/2	DOUBLE
BULKHEAD PLATING	UP TO 36	3/4	3 1/2	2 1/2	2 1/2	SINGLE
" " " "	OVER 36	3/4	3 1/2	2 1/2	5	DOUBLE
HATCH SIDES OR GIRDERS	UP TO 50	3/4	3 1/2	2 1/2	7 1/2	TREBLE
DECK HOUSES & CASINGS	UNDER 36	3/4	3 1/2	2 1/2	2 1/2	SINGLE

SEAMS

ITEM	THICKNESS OF PLATING	DIA OF RIVETS	FRAME SPACING	NUMBER OF SEAMS	REMARKS
SHELL PLATING FROM	UNDER 36	3/4	26	9	2 1/2
KEEL TO UPPER	UNDER 36	3/4	26	8	4 1/2
TURN OF BILGE	UNDER 36	3/4	24	8	2 1/2
" " " "	OVER 36	3/4	24	7	4 1/2
FROM KEEL TO UPPER TURN BILGE (2 L)	UNDER 36	3/4	26	10	3 1/2
FROM UPPER TURN	UNDER 36	3/4	26	9	2 1/2
OF BILGE ELSEWHERE	OVER 36	3/4	26	8	2 1/2
" " " "	UNDER 36	3/4	24	8	2 1/2
" " " "	OVER 36	3/4	24	7	2 1/2
SHELL PLATING IN WAY	OVER 36	3/4	22	6	4 1/2
OF FORE & AFT PEAKS	UNDER 36	3/4	22	8	2 1/2
SEAMS OF DECK PLATING	OVER 36	3/4	26	7	2 1/2
" " " "	UNDER 36	3/4	26	9	2 1/2
" " " "	UNDER 36	3/4	24	8	2 1/2
" " " "	UNDER 36	3/4	22	7	2 1/2
SEAMS OF INNER BOTTOM	70 TO 36	3/4	24	6	3
" " " "	UNDER 36	3/4	24	8	2 1/2
BULKHEAD PLATING	UNDER 36	3/4	42	2 1/2	2 1/2
DECK HOUSES & CASINGS	UNDER 36	3/4	5	3 1/2	2 1/2

CONNECTION OF BARS TO PLATES.

ITEM	DIA OF RIVETS	SPACING OF RIVETS	REMARKS
BOTH FLANGES OF UPPER DECK STRINGER ANGLES	3/4	4 1/2	3 1/2
" " " "	3/4	4 1/2	2 1/2
BOTH FLANGES OF FRAMES & REV. FRAMES FWD 7/8 LEN	3/4	5 1/2	4 1/2
" " " "	3/4	5 1/2	3 1/2
SHELL FLANGE OF FRAMES	3/4	6	4 1/2
SHELL FLANGES OF DEEP FRAMES FWD 7/8 LEN	3/4	5 1/2	3 1/2
SHELL FLANGES OF FRAMES IN PEAKS	3/4	5 1/2	3 1/2
SHELL FLANGE OF BULKHEAD FRAME & DECK PL	3/4	5	3 1/2
BND	3/4	5	3 1/2
BULKHEAD STIFFENERS	3/4	7	4 1/2
FACE BARS OF DEEP BRACKETS	3/4	7	4 1/2
FLAT PLATE KEEL ANGLES	3/4	5	3 1/2
VERTICAL ANGLES CONNECTING FLOORS & CENTRE GIRDERS	3/4	5	3 1/2
FLOORS & CROSS TIES ETC IN PEAKS	3/4	5	3 1/2
DOUBLE BOTTOM FRAMES & REV. FRAMES	3/4	6	4 1/2
HEELSON ANGLES (CENTRE & SIDE)	3/4	7	4 1/2
HATCH WEB ANGLES	3/4	7	5 1/2
HATCH COAMING ANGLES	3/4	4 1/2	3 1/2
HOUSE COAMING ANGLES	3/4	4 1/2	2 1/2
BEAMS TO DECK PLATING	3/4	6	3 1/2
" " " "	3/4	6	4 1/2
ENGINE GIRDER TOP & BOTTOM ANGLES	3/4	5	3 1/2
CASINGS & HOUSE STIFFENERS	3/4	7	4 1/2
BOTH FLANGES OF FRAME & REVERSE FRAMES TO FLOORS	3/4	7	4 1/2

NOTE:- SCANTLINGS SHEWN ARE TO SUIT

DOCK COY'S STOCK MATERIAL

OWNERS SPECIFY NO PILLARS WEBS

STRINGERS OR OTHER OBSTRUCTIONS

IN CARGO HOLD (TIMBER CARGOES)

EXCEPT IN WAY OF PANTING ARRANGEMENT.

SHIP NO 636

STEEL TWIN SCREW MOTOR VESSEL

DIMENSIONS:- 170'-0" B.P. x 29'-0" MLD x 13'-3" MLD.

SCALE 1/2" = 1 FOOT

CLASS 100 A.I. LLOYDS

LLOYDS NUMERALS

L x D = 2252 L (B + D) = 71825

B = 29 D = 13.25

1/0 = 12.84 d = 11.90

EQUIPMENT NUMBER = 7530

3 BOWER ANCHORS STOCKLESS COLLECTIVE WEIGHT 4 1/2 CWT.

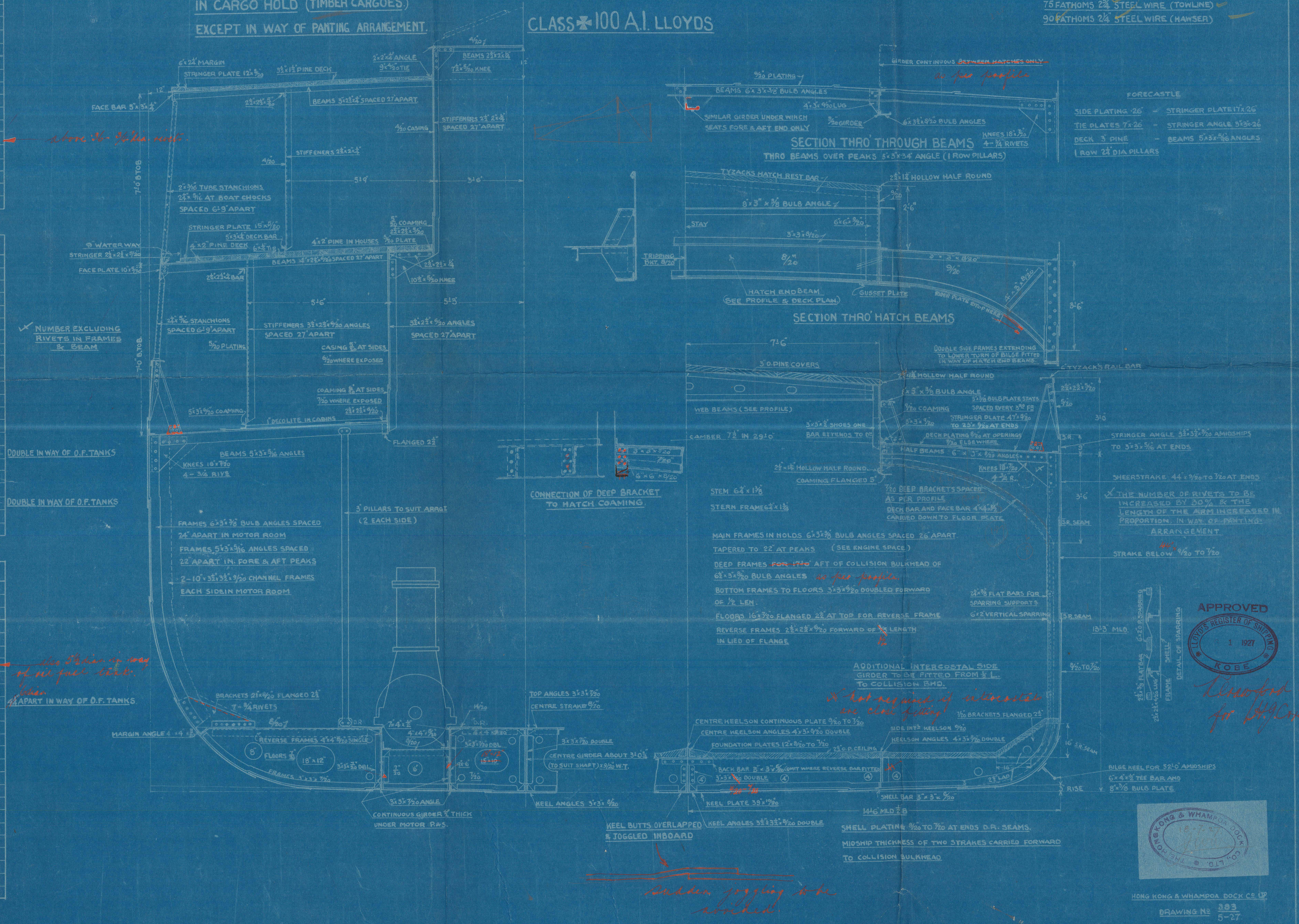
1 STREAM ANCHOR EXSTOCK COLLECTIVE WEIGHT 4 1/2 CWT.

195 FATHOMS 1 1/2" STUD CHAIN CABLE WEIGHT 14 1/4 CWT.

60 FATHOMS 3" STEEL WIRE (STREAM)

75 FATHOMS 2 1/2" STEEL WIRE (TOWLINE)

90 FATHOMS 2 1/4" STEEL WIRE (HAWSER)



APPROVED
LLOYD'S REGISTER OF SHIPS
ROBE

1927

1927

1927

1927

1927

1927

1927

London Office

Mid. Sec.

" PALAWAN "

Hkg Rpt No 6225

~~CONFIDENTIAL 221~~



© 2020

Lloyd's Register
Foundation

008344-008353-0001