

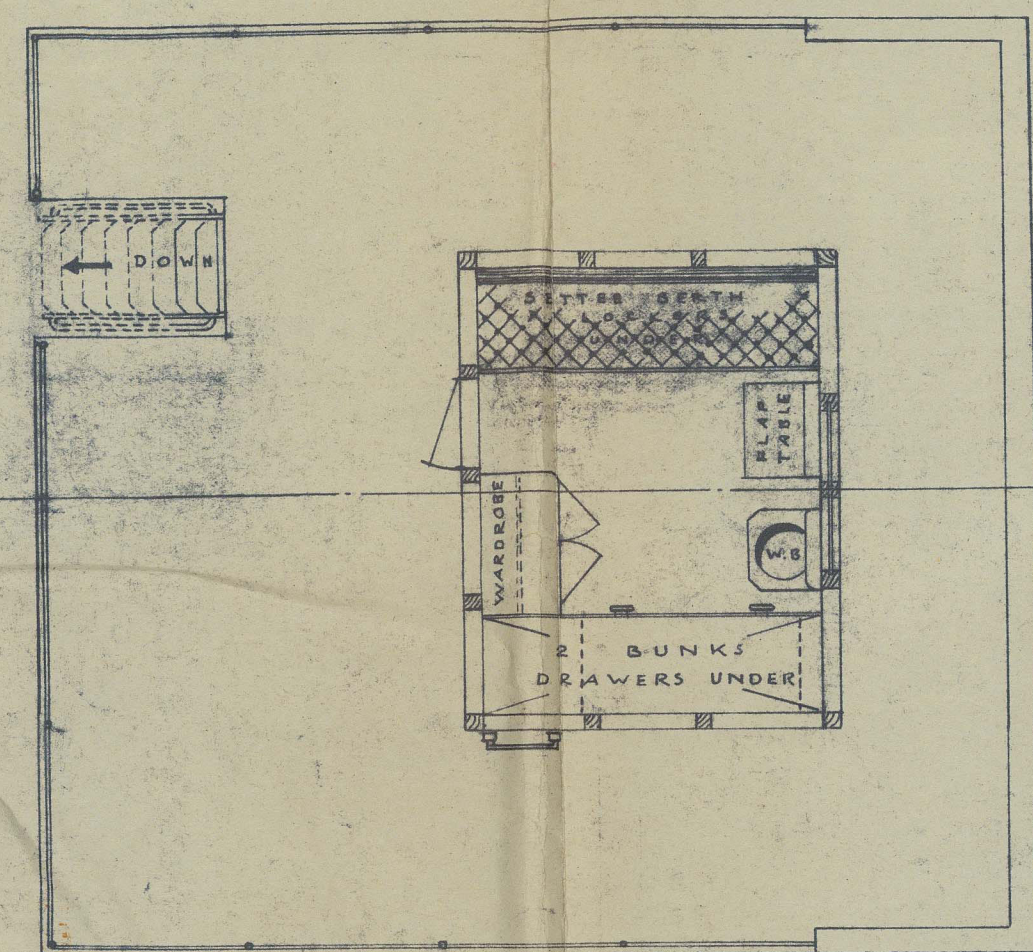
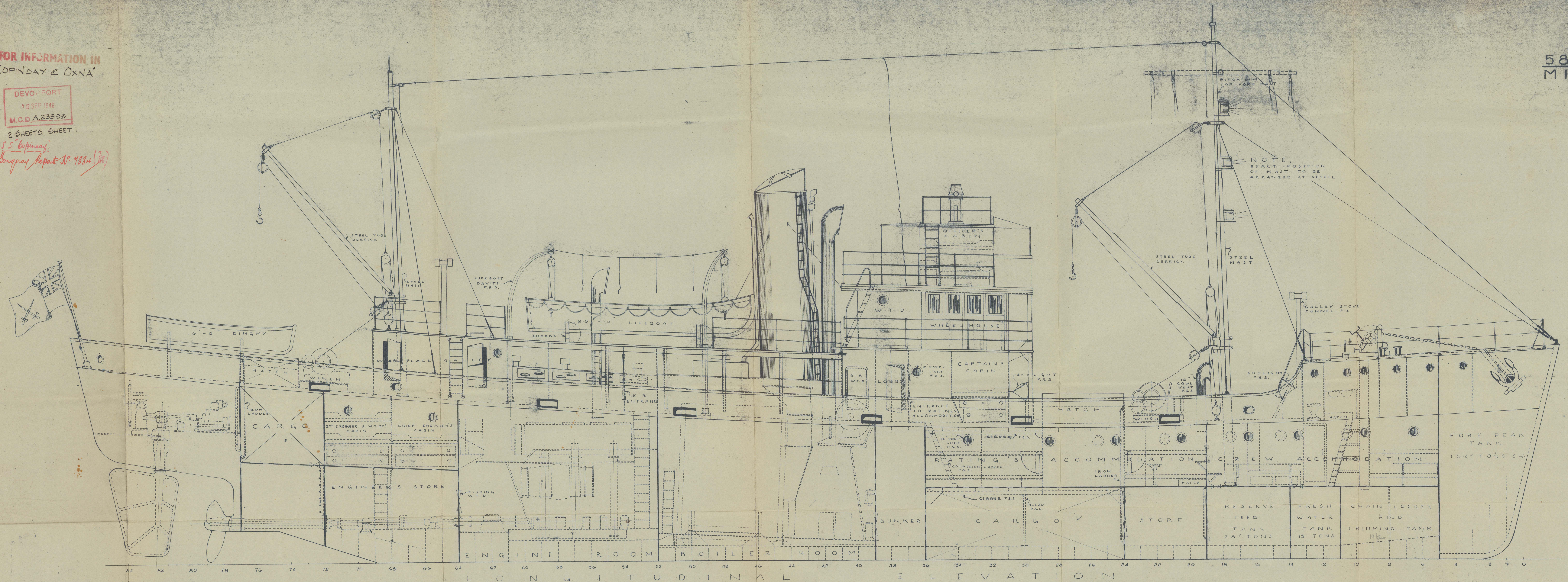
FOR INFORMATION IN
"COPINSAY & OXNA"

DEVO. PORT
19 SEP 1946
M.O.D. A.23393

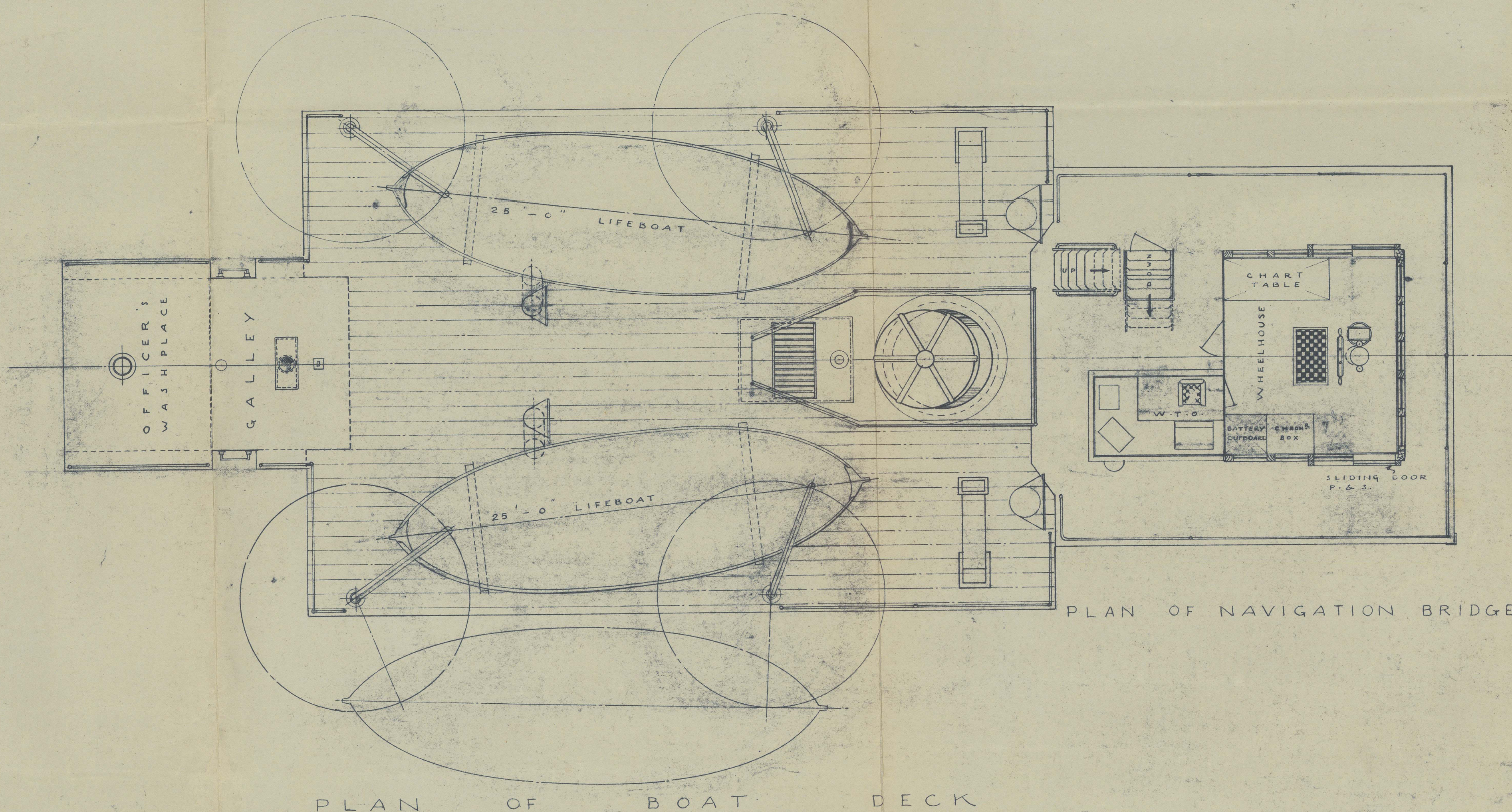
2 SHEETS SHEET 1

55 Copinsay
Longway Report No. 1884 (2)

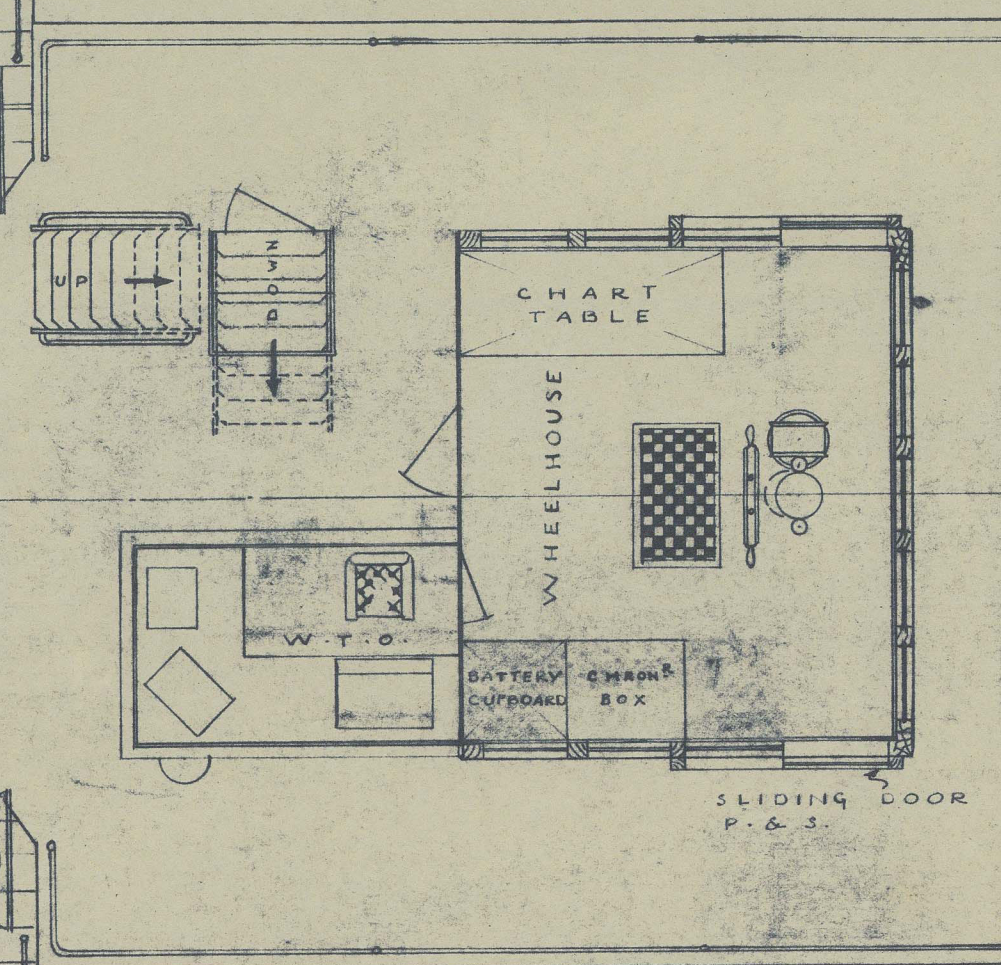
589
M14



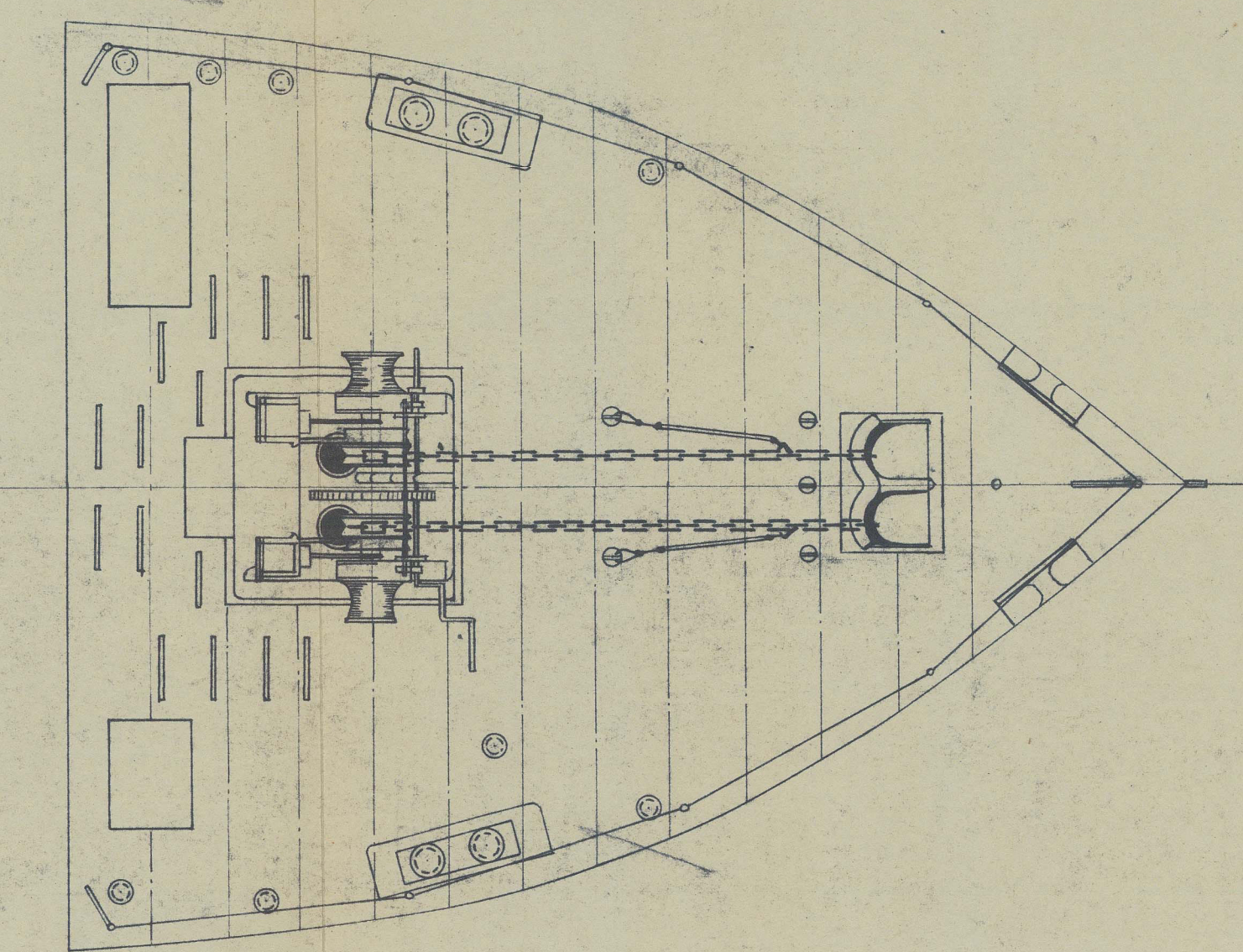
PLAN OF OFFICER'S CABIN



PLAN OF BOAT DECK



PLAN OF NAVIGATION BRIDGE



PLAN OF FORECASTLE DECK

GENERAL ARRANGEMENT. SHEET No. 1
PASSENGER AND CARGO STEAMER FOR R.A.S.C. SERVICE.
[EX. 160 FOOT ADMIRALTY AS/MS STEAM TRAWLER.]

SCALE, 1/4 INCH = 1 FOOT.

THE WAR OFFICE
SUPERINTENDING ENGINEER &
CONSTRUCTION
DRAWN BY J.H. Keating 28/6/46
CHECKED BY J.H. Keating 31/9/46
S.E.C.S.

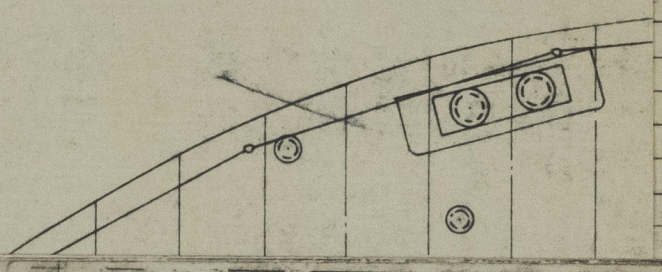
S.E.C.S.		31 May 46
CHECKED BY	<i>84R</i>	31/5/46
BY	J.H. Keeling	28/5/46

THE WAR OFFICE -
SUPERINTENDENT OF SHIPBUILDING & REPAIRS
CONSTANT DOCK, LONDON

008333-008343-0201

FOOT -

OF FORECASTLE DECK



589
M.14a

008333.008343.0201

FOR INFORMATION IN
"COPINSAY & OXNA"

DEVONPORT
19 SEP 1946
M.C.D. A.23393

2 SHEETS. SHEET 1

S.S. "Copinsay"
Longway Report No. 9884 (28)

