

PRINCIPAL DIMENSIONS.

LENGTH B.P.	416'-0"
BREADTH EXTR.	57'-1"
BREADTH MLD.	56'-10 1/2"
DEPTH MLD. UPPER DK.	37'-4"
DEPTH MLD. SECOND DK.	28'-7"
DEPTHS TO LENGTH UPPER DECK	
CLASS + 100A1 WITH FREEBOARD	
DRAFT MLD.	26'-10"

UPPER DECK STRINGER ANGLE
FRS. 23-40 4" x 4" x 3/8"
FRS. 40-128 6" x 6" x 1/2"
FRS. 128-147 4" x 4" x 3/8"
STRINGER 1/2" E.W. TO
SHEER STRAKE AT ENDS.

BUTT WELDS IN ALL CLASSES TO HAVE
A FINISHING BEAD.
FIRST TWO BEADS IN BUTT WELDS
TO BE WELL PEENED.

PLATES TO BE VEED OUT TO A 60° INCLUDED ANGLE
FOR ALL BUTT WELDS AND BEVELLED TO WITHIN 1/8"
FROM BOTTOM PLATE. GAP OF 1/8" TO BE KEPT
BETWEEN EDGES TO BE WELDED.

EQUIPMENT. 270

- 2 STOCKLESS ANCHORS 3400 LBS EACH
- 1 STUD CABLE CHAIN 25 FATHOMS 2 1/2" H.T. STEEL
- 1 STREAM ANCHOR (STOCKLESS) 23 1/2" GWTS.
- 1 STREAM WIRE 90 FATHOMS 6" - 6 x 12 F.S.W.
- 1 TOWLINE 120 " 4 1/2" - 6 x 24 SPECIAL F.S.W.
- 2 HAWSERS 90 " 2 1/2" - 6 x 12 F.S.W.
- 2 WARPS 90 " 2 1/2" - 6 x 12 " "

WELDING NOTES.

FLAT KEEL WELD BUTTS FROM INSIDE (WELD IN WAY OF G.V.K. BARS AND SEAMS ONLY). DO NOT COMPLETE WELD UNTIL G.V.K. & GARRBOARD STRAKES ARE BOLTED UP. WILL COME RIVETED COMPLETE EXCEPT IN WAY OF BUTTS OF PLATING. SHORT BARS APPROX. 15" x 30" LONG TO BE INTRODUCED HERE AND FITTED AFTER G.V.K. IS IN PLACE. BUTTS OF ANGLES TO BE WELDED.

G.V. KEEL 60° WELD FROM INSIDE. OUTSIDE PLATE. FINISHING BEAD. 60° WELD FROM OUTSIDE. 1" WIDER THAN LANDING.

BOTTOM SHELL PLATING WELD 2" EACH SIDE OF BUTT. ON SEAMS (BOTH INSIDE & OUTSIDE).

ALL BUTTS OF BOTTOM SHELL TO BE VEED OUT AND WELDED FROM THE INSIDE. THIS IS DONE TO OBTAIN DOWN HAND WELDING TO FULLEST EXTENT. BUTTS OF INSIDE STRAKES WILL BE VEED OUT FULL WIDTH. THE BUTTS OF OUTSIDE STRAKES TO BE VEED INSIDE AND WELDED BETWEEN THE LANDING EDGES OF INSIDE STRAKES ONLY. THIS WELD WILL BE COMPLETED BY VEEDING OUTSIDE ON THE SHIP AND WELDING BOTH SEAMS. THESE TO VEED OUT 1" WIDER THAN LANDING.

SIDE SHELL AND ENDS INSIDE STRAKES TO BE VEED OUT AND WELDED FROM THE INSIDE. OUTSIDE STRAKES TO BE VEED OUT AND WELDED FROM THE OUTSIDE.

CLEAR OF BOTT. SHELL THIS IS A CLINKER STRAKE. THE BUTTS TO BE VEED AND WELDED FROM OUTSIDE AND LOWER EDGE WHICH IS INSIDE IS TO BE FINISHED IN THE SAME MANNER AS OUTSIDE PLATES. THAT IS VEED 1" WIDER THAN LANDING AND WELDED FROM INSIDE. **NOTE:** ALL SHELL LANDINGS TOP & BOTTOM FOR 3" EACH SIDE OF SHELL BUTTS TO BE WELDED.

TANK TOP ALL TANK TOP PLATING, SEAMS AND FLOOR ANGLES TO BE RIVETED. ALL BUTTS TO BE WELDED FROM TOP SIDE. TANK TOP SEAMS TO BE WELDED FOR 3" EACH SIDE OF BUTT. SHAFT TUNNEL PLATING TO BE FILLET WELDED TO TANK TOP SIMILAR TO BHO'S. NO FOUNDATION BARS TO BE FITTED. PLATING TO HAVE SAME PROCEDURE AS TANK TOP.

TANK MARGIN PLATE FLANGED ON TOP AND LAP RIVETED TO TANK TOP PLATING. BOTTOM EDGE TO BE BUTTED ON SHELL PLATE AND FILLET WELDED. THE ORDINARY FLOORS AS WELL AS OT & WT FLOORS WILL BE WELDED TO THIS PLATE INSIDE AND BILGE BRACKETS WELDED ON OUTSIDE. NO ANGLE CONNECTIONS WILL BE FITTED ON EITHER SIDE OF TANK MARGIN PLATE. ALL BUTTS OF TANK MARGIN PLATES WELDED FROM OUTSIDE, WITH FINISHING BEAD INSIDE.

WT BHO'S TO BE ALL RIVETED EXCEPT IN WAY OF TANK TOP AND TANK MARGIN. NO FOUNDATION ANGLE TO BE FITTED TO TANK TOP OR MARGIN. BHO PLATING AND STIFFENER BRACKETS BUTTED HARD ON TANK TOP AND TANK MARGIN AND FILLET WELDED. BULKHEAD SHELL BARS TO BE CARRIED DOWN BILGE AND STOPPED 1/2" SHORT OF MARGIN PLATE.

BILGE BRKTS AND GUSSET PLATE RIVETED TO FRAME AND BILGE ANGLE AND WELDED TO TANK MARGIN. GUSSET PLATE WELDED TO FLANGE OF BILGE BRACKET AND WELDED TO TANK TOP.

OT BHO'S TO BE OF ALL WELDED CONSTRUCTION.

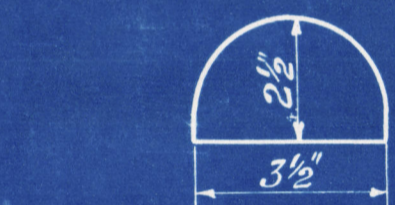
WT & OT FLOORS TO BE WELDED DIRECT TO SHELL & TANK TOP WITHOUT ANGLES. SEE SKETCH.

DOUBLE BOTTOM THROAT WELD (VARIES WITH THICKNESS OF PLATE).

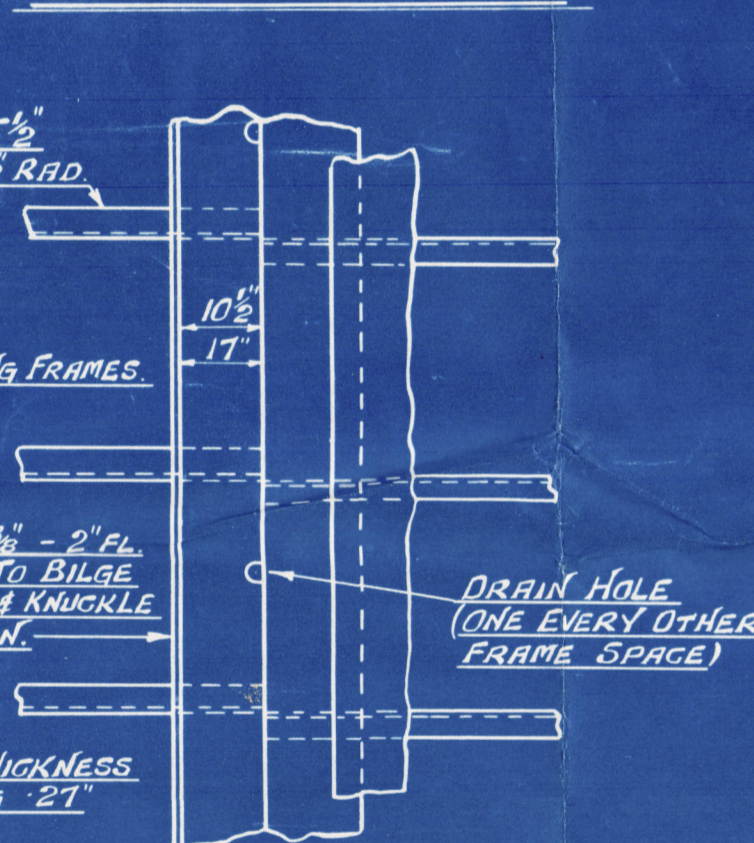
DRAWING REVISIONS			
NO.	DATE	BY	REVISION
1	12/1/42	J.M.C.	REVISED TO YARD
2	12/1/42	J.M.C.	REVISED TO YARD
3	12/1/42	J.M.C.	REVISED TO YARD
4	12/1/42	J.M.C.	REVISED TO YARD
5	12/1/42	J.M.C.	REVISED TO YARD
6	12/1/42	J.M.C.	REVISED TO YARD
7	12/1/42	J.M.C.	REVISED TO YARD
8	12/1/42	J.M.C.	REVISED TO YARD
9	12/1/42	J.M.C.	REVISED TO YARD
10	12/1/42	J.M.C.	REVISED TO YARD

DRAWINGS ISSUED TO GROUP			
NO.	DATE	BY	REVISION
1	12/1/42	J.M.C.	REVISED TO YARD
2	12/1/42	J.M.C.	REVISED TO YARD
3	12/1/42	J.M.C.	REVISED TO YARD
4	12/1/42	J.M.C.	REVISED TO YARD
5	12/1/42	J.M.C.	REVISED TO YARD
6	12/1/42	J.M.C.	REVISED TO YARD
7	12/1/42	J.M.C.	REVISED TO YARD
8	12/1/42	J.M.C.	REVISED TO YARD
9	12/1/42	J.M.C.	REVISED TO YARD
10	12/1/42	J.M.C.	REVISED TO YARD

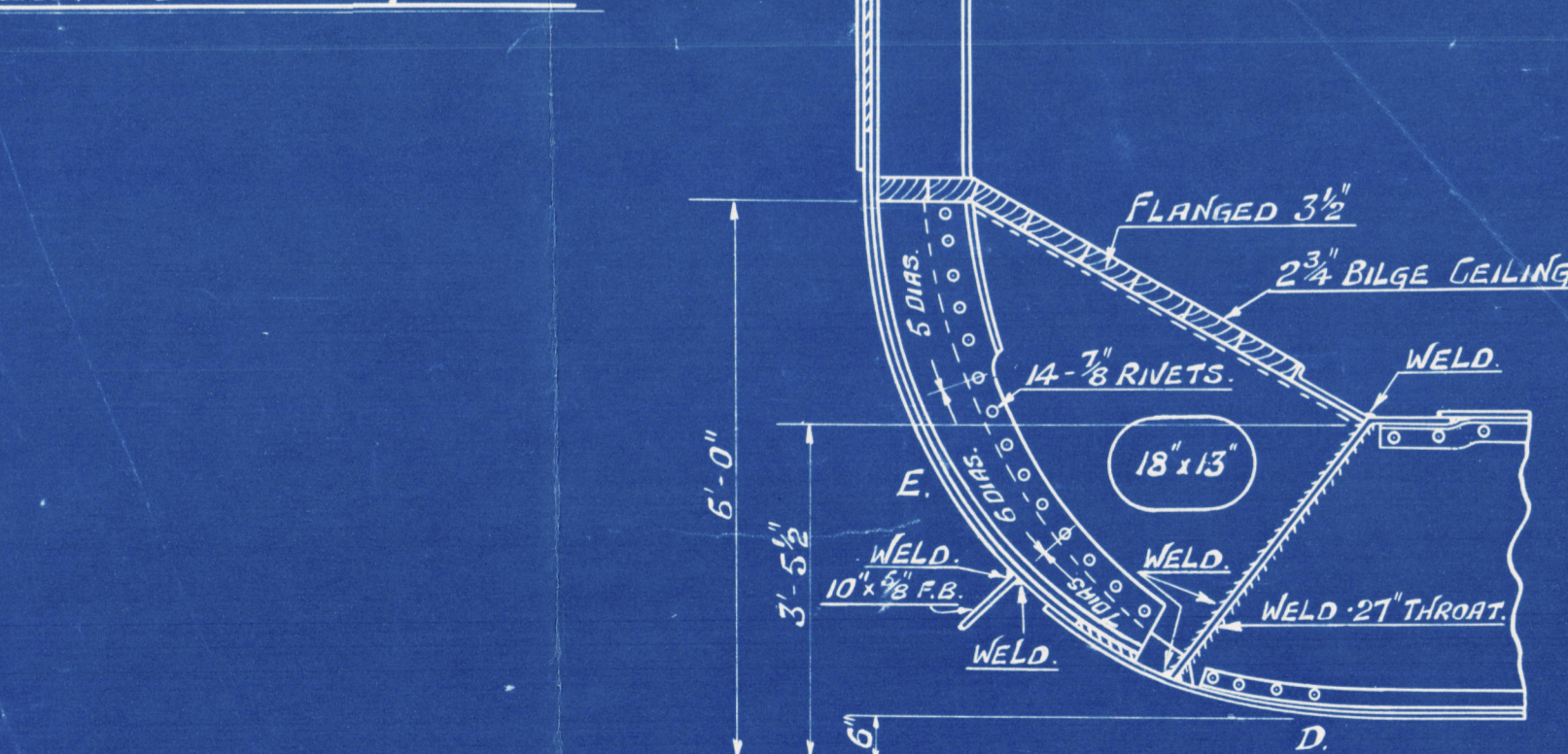
PLAN.



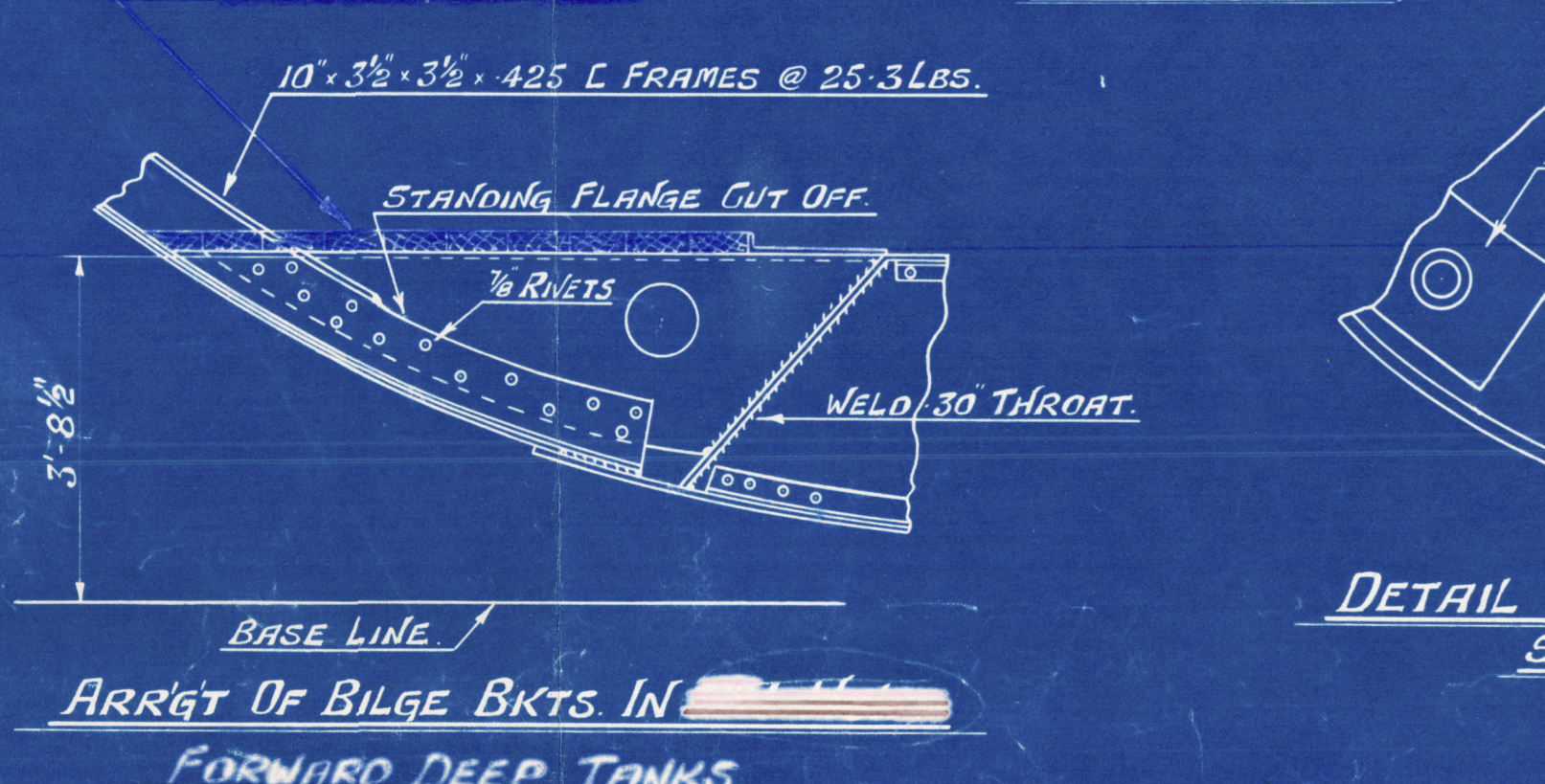
DETAIL OF DRAIN HOLE.



DETAIL OF TANK GUSSETS.



DETAIL OF BILGE BRACKETS. AFT OF FRAME 66 & FORD OF FRAME 106 (EXCEPT NO. 1 HOLD).



DETAIL OF DRAIN HOLES. SCALE: 3" = 1'-0"



APPROVED BY LLOYDS REGISTER OF SHIPPING-NEW YORK - JULY 1ST 1943

APPROVED BY AMERICAN BUREAU OF SHIPPING OCT. 7TH 1942.

As recommended by Transoceanic Bldg Co.
1" Bilge Brk. Support
1" B.O. 8
5' 3" FORT VENANGO
Burrard Dry Dock Co. Ltd.
South Island N° 189
N/W CALL
HULL # 189
5/8 FORT VENANGO.

REVISIONS TO DRAWING			
NO.	DATE	BY	REVISION
1	DEC. 20/42	J.M.C.	FOR SHIP SHEDS BELOW 20' IN CHIEF IN EQUIPMENT
2	JUN. 4/43	J.M.C.	PASSENGER TWEEN DECK MOVED OUTBOARD
3	JULY 21/43	J.M.C.	BOW OT & TANK TOP CEILING CUT SQUARE AT REQUEST OF W.M.S.
4	AUG. 11/43	J.M.C.	WOOD CEILING & LIGHTENING HOLE TO NO. 1 HOLD BILGE BRACKETS.
5	SEP. 21/43	J.M.C.	HULL # 189 & UP ONLY
6	SEP. 21/43	J.M.C.	CLASS OF VESSEL & QUANTITY OF STEEL CABLE CHAIN HITCHED-DRAFT MLD. REVISED

BURRARD DRY DOCK CO. LTD.
NORTH VANCOUVER, B. C.
HULL DEPARTMENT

10000 TON VICTORY SHIPS.
MIDSHIP SECTION.

DRAWN BY: W.T. TRACED BY: G.K. CHECKED BY: G.K.
SCALE: 1/2" = 1'-0"
DATE: 5-5-43. DWG. No. 7013A.