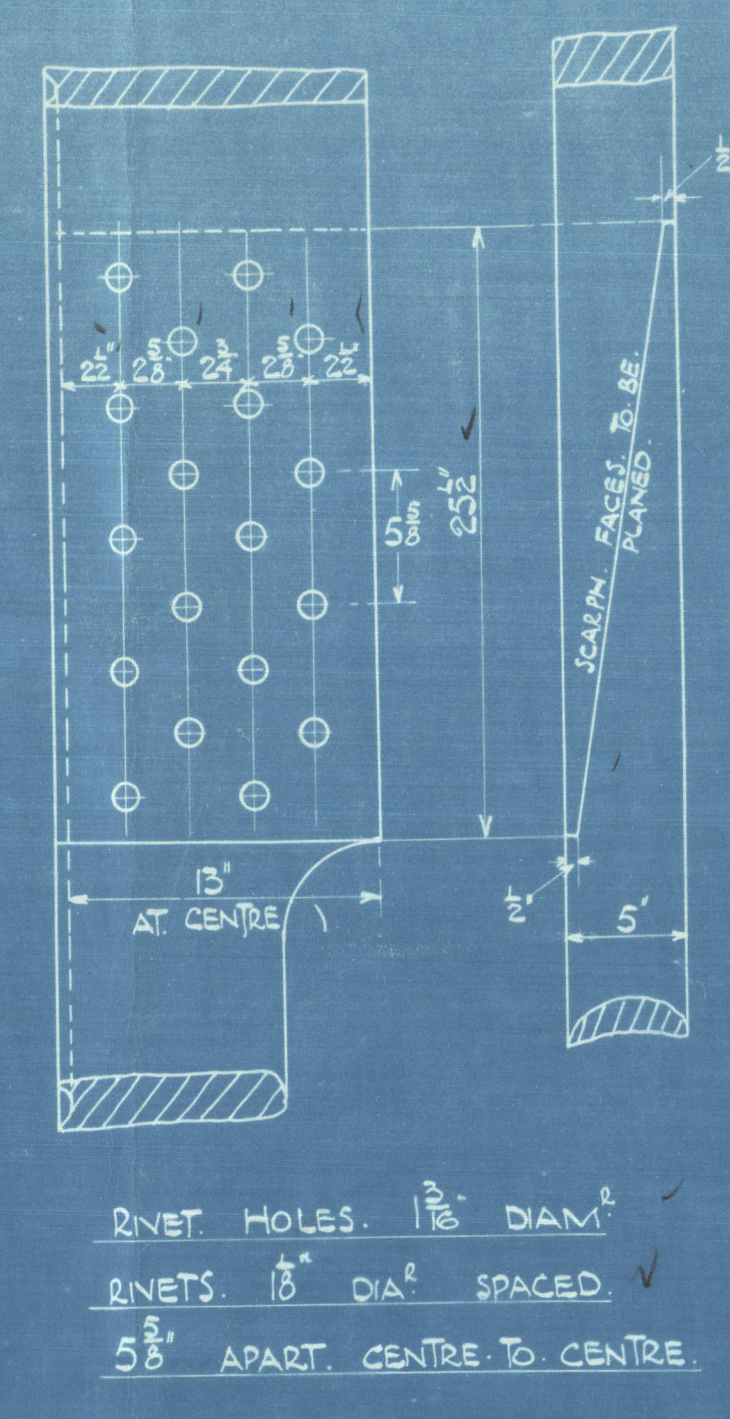


15-2-12  
3/3/11 → 15-2-11

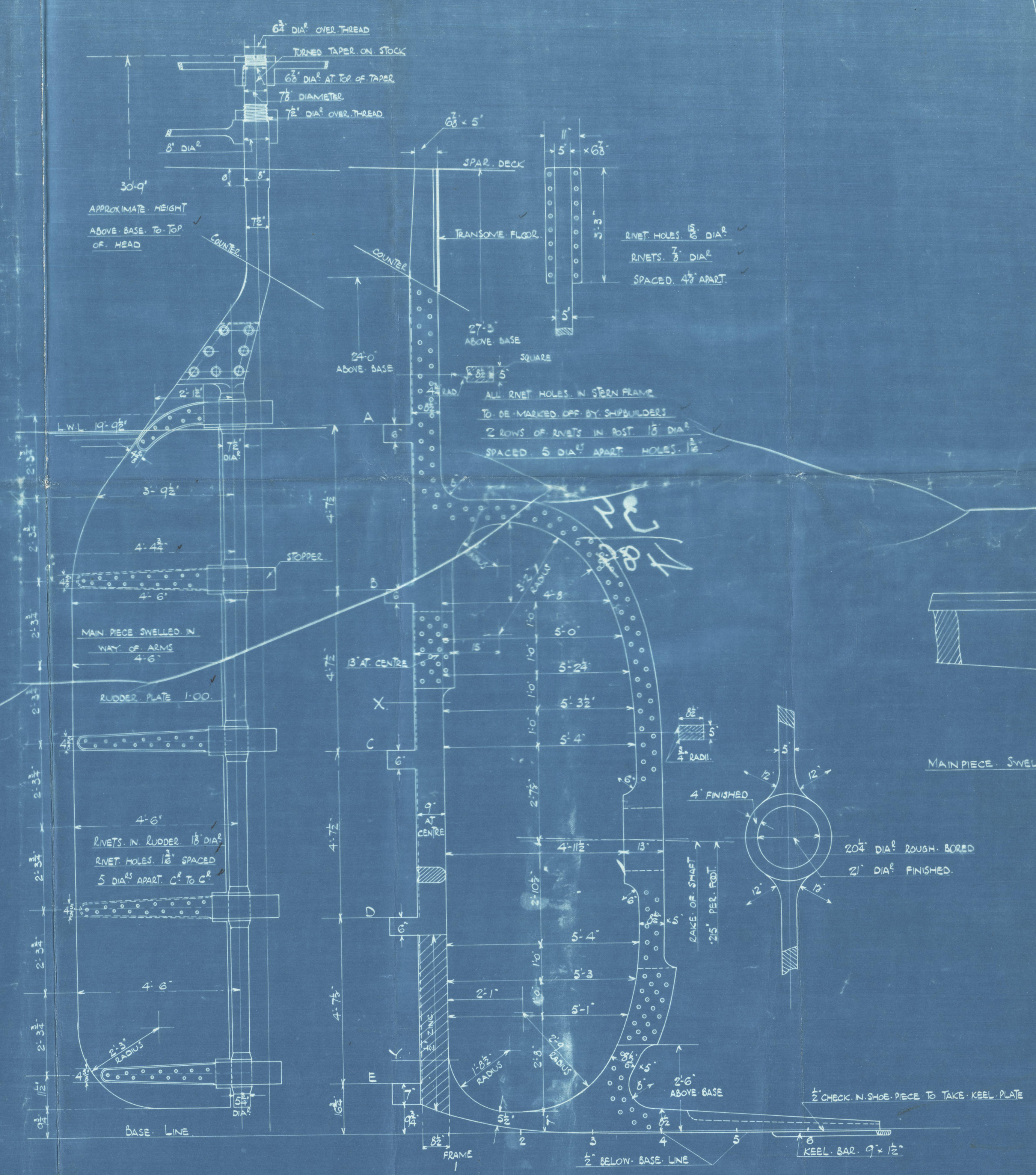
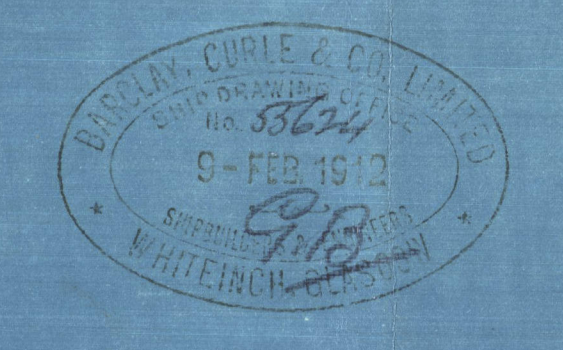
No 489.-AND-503.

• STERN FRAME [CAST STEEL]  
• RUDDER FRAME [FORGED IRON]

Scale  $\frac{1}{2}$ " = 1 Foot

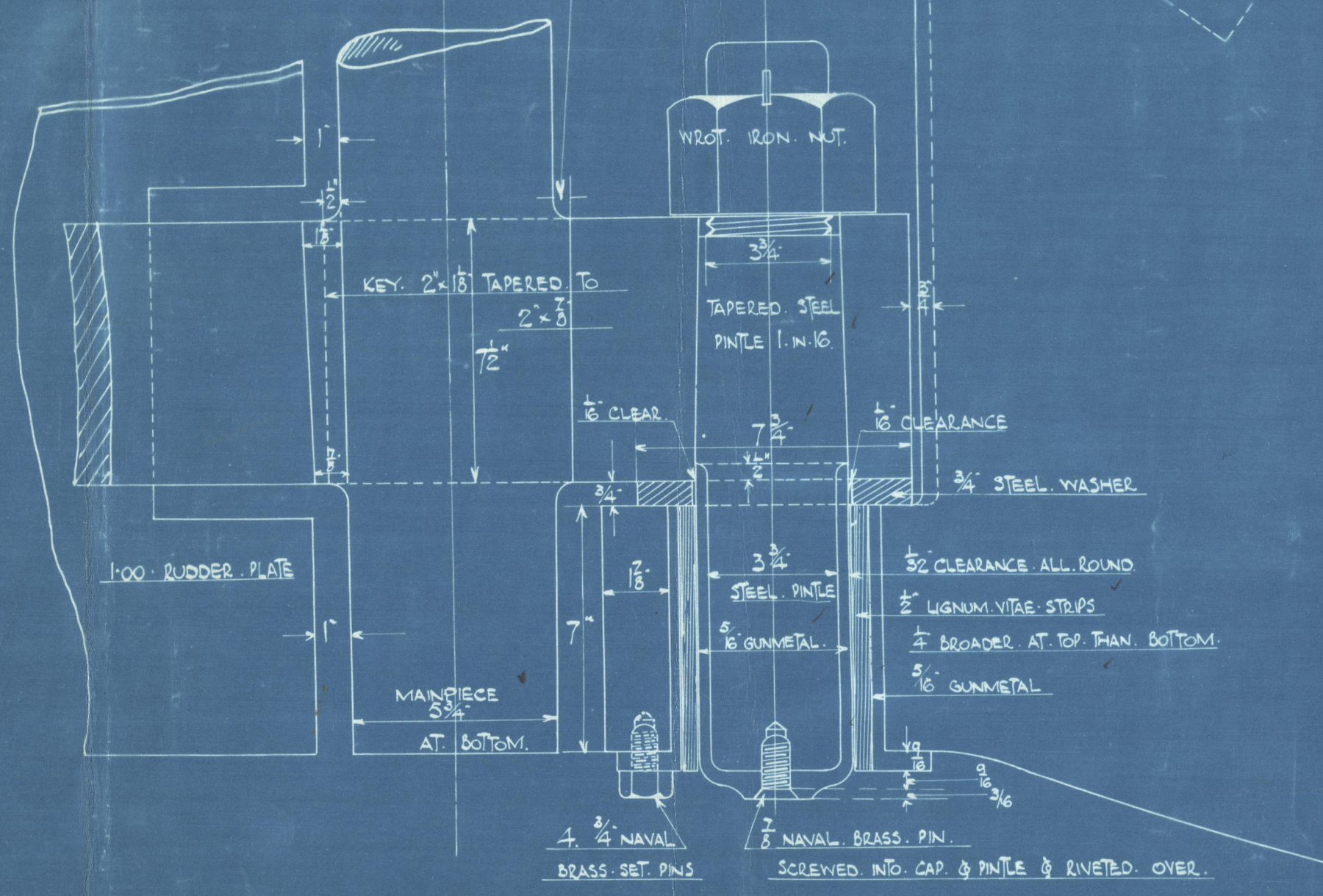
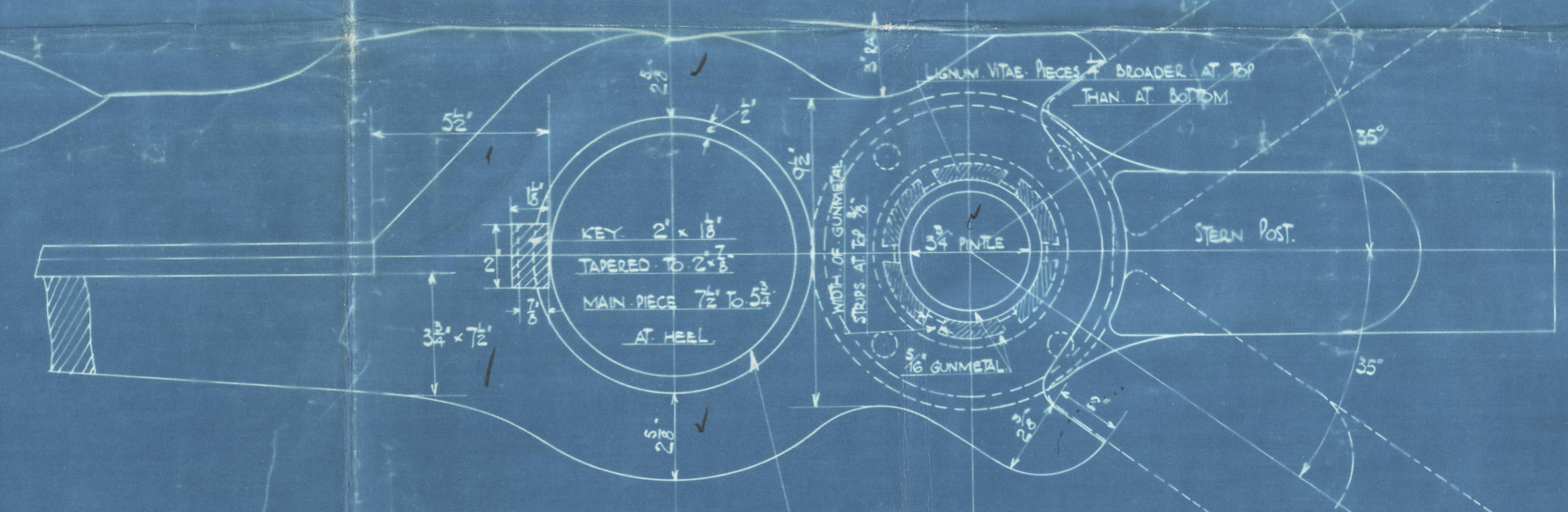


DETAIL OF SCARPH  
ON AFTER POST  
Scale  $\frac{1}{2}$ " = One Foot



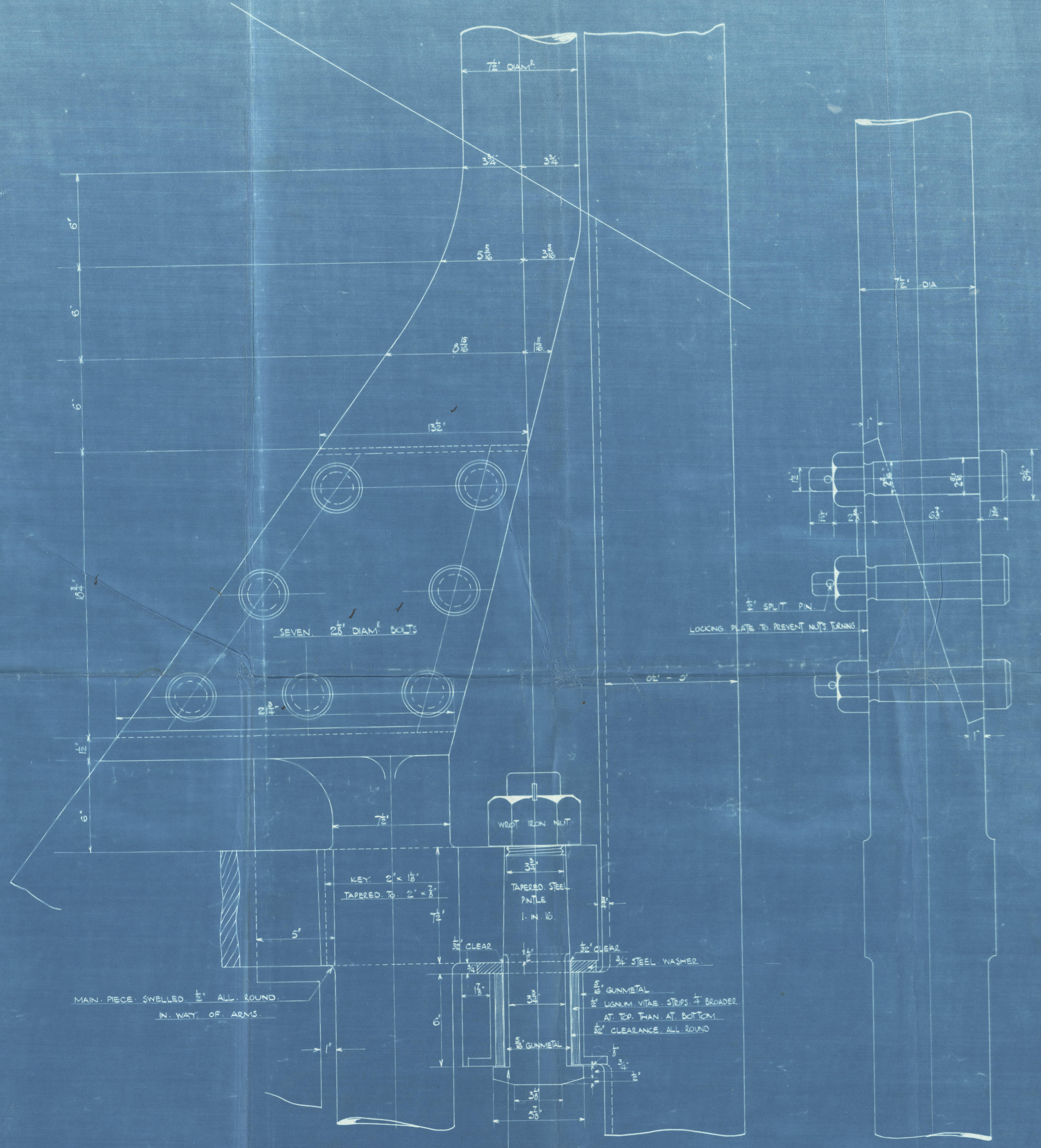
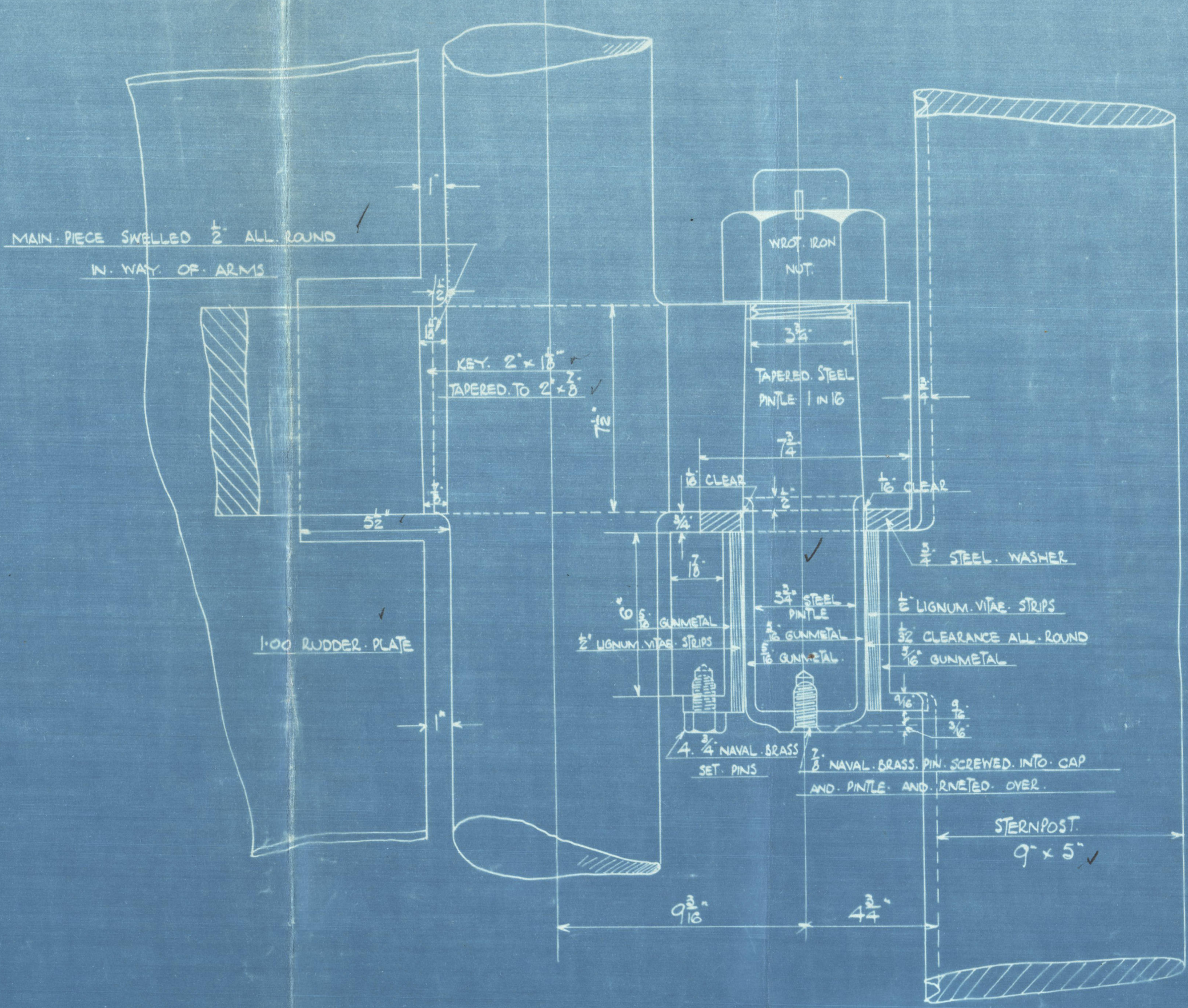
PLAN OF RUDDER STOPPER

NOTE: CARE IS TO BE TAKEN IN MAKING STOPPER THAT RUDDER STOPS AT 35° EACH SIDE



SKETCH OF HEEL PINTLE  
SCALE 3" = 1 FT

SKETCH OF PINTLES B.C.D. Scale 3" = 1 FT

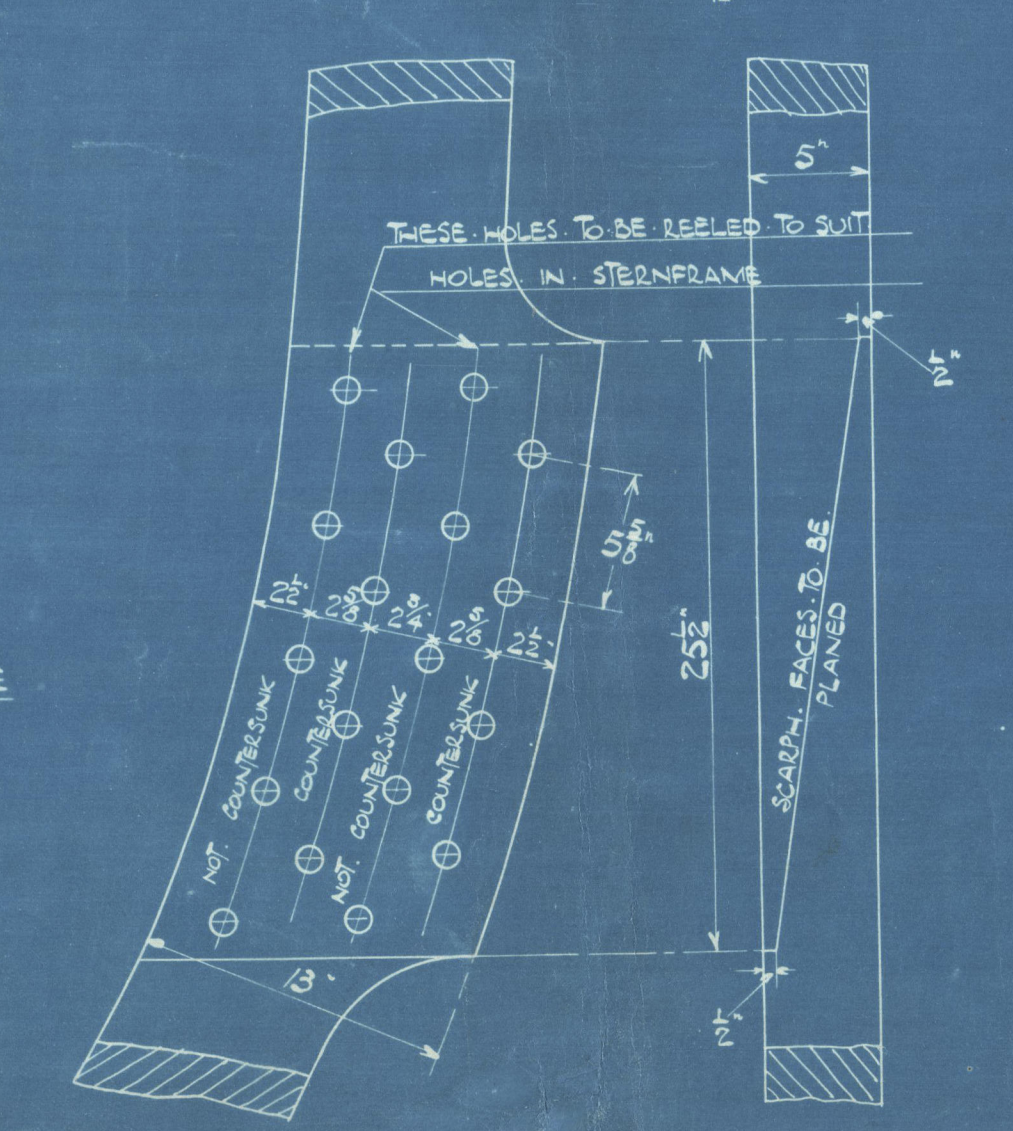


DETAIL OF RUDDER COUPLING & TOP PINTLE  
Scale 3" = 1 Foot

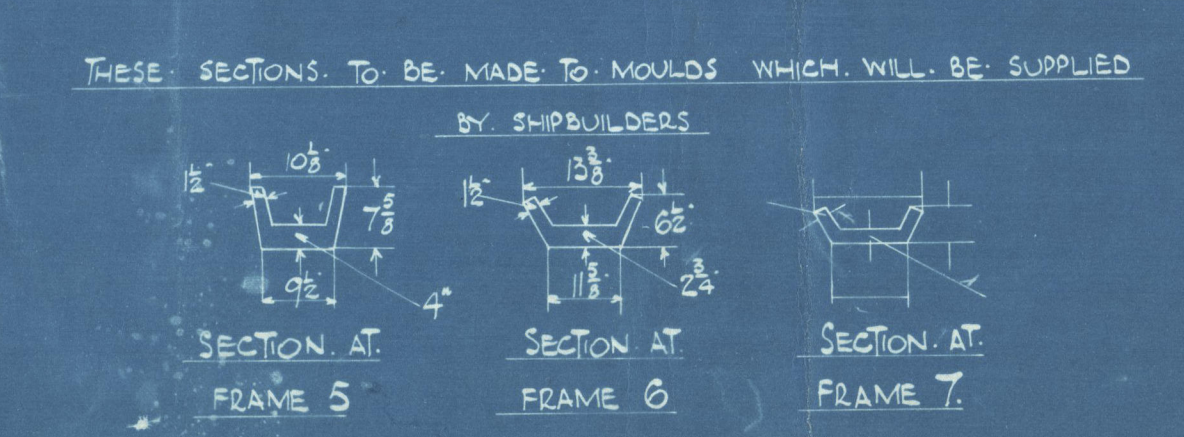
NOTE: PINTLES, PINTLE BUSHES AND STEEL WASHERS TO BE SUPPLIED BY RUDDER MAKERS. STEEL WASHERS TO BE TURNED FROM ORDNANCE SHIP PLATE. GUNMETAL AND LUGNAIL WIRE TO BE SUPPLIED BY STEEL FRAME MAKERS.

DETAIL OF SCARPH  
ON FORD POST  
Scale  $\frac{1}{2}$ " = One Foot

RIVET HOLES  $\frac{1}{8}$ " DIA  
RIVETS  $\frac{1}{8}$ " DIA SPACED  
5" APART CENTRE TO CENTRE



NOTES: CARE TO BE TAKEN IN MAKING CENTRE LINE OF PINTLES & GUDGEONS IN A STRAIGHT LINE. FOR EXACT POSITION OF RUDDER ARMS A BATTEN WILL BE SENT BY SHIPBUILDERS GIVING THE EXACT POSITION OF GUDGEONS ON STERN FRAME. MAIN PIECE IN WAY OF ARMS TO BE TURNED PARALLEL ARMS SPRUNG ON & KEVED TO MAIN PIECE.

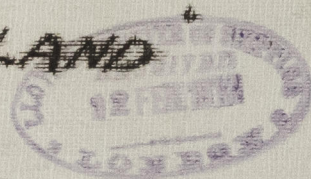




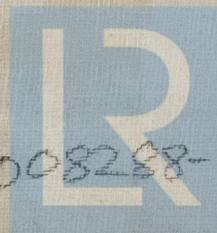
Barclay Curlew  
Stern frame & Rudder

N<sup>o</sup> 503

~~\* BORDERLAND~~



GLASGOW REPORT No: 32197.



© 2021

008288-008295-0089  
Lloyd's Register  
Foundation



Lloyd's

008288-008295-0089



© 2021

Lloyd's Register  
Foundation