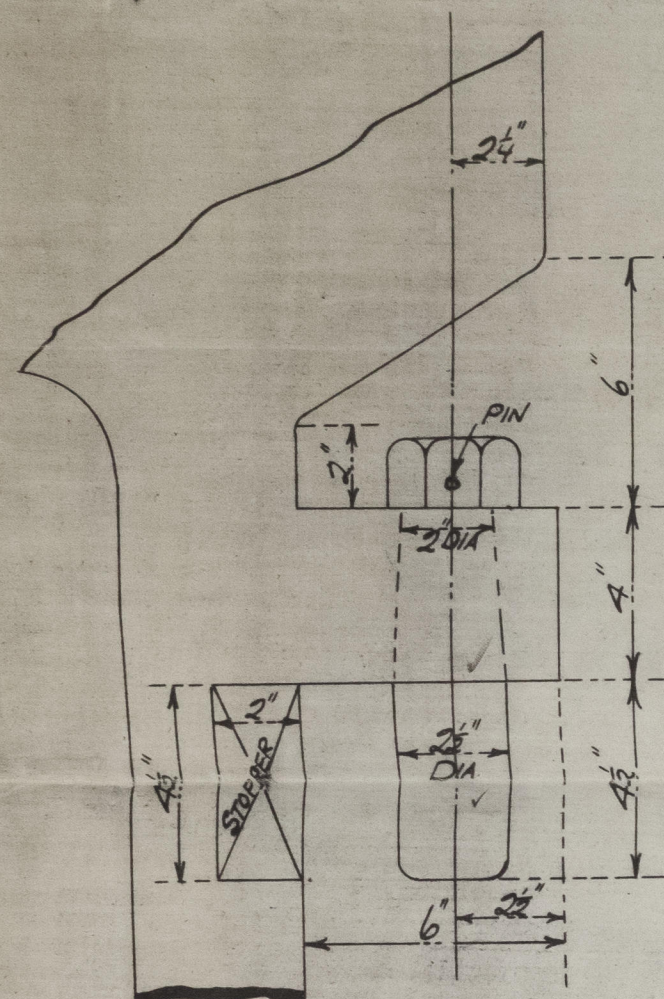


RUDDER

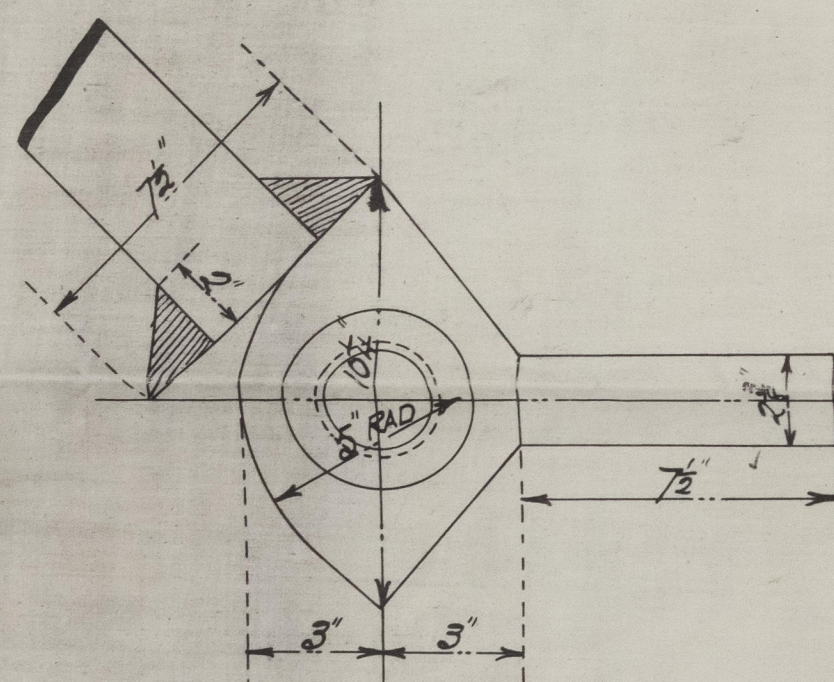
SCALE $\frac{3}{4}$ " = 1 FOOT

HOLES DRILLED 5 DIA 5 APART FOR $\frac{3}{4}$ " RIVETS
NUMERAL FOR RUDDER 46.3/
SIDE PLATES 26.



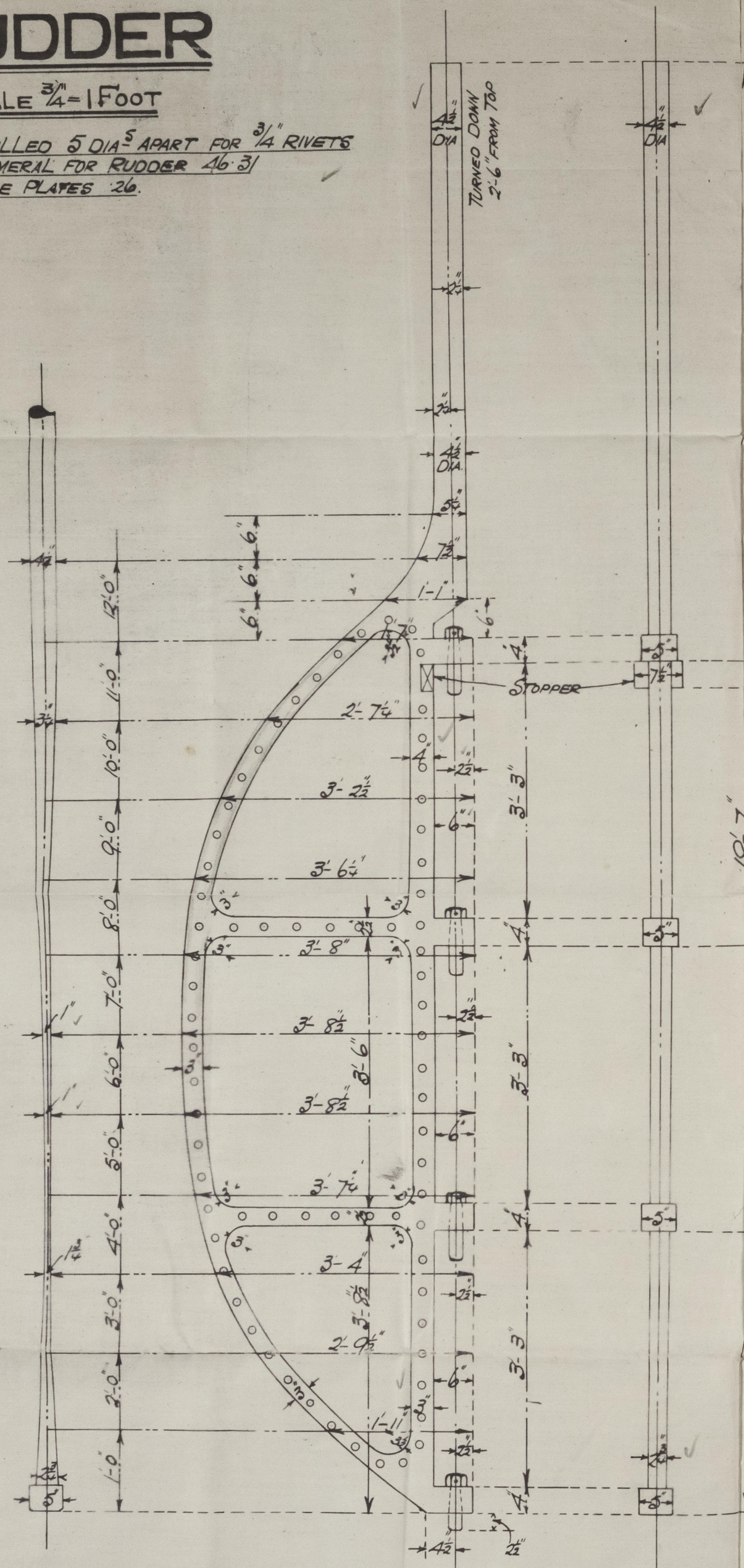
ENLARGED VIEW OF LOOSE PINTLES

NOTE - CARE TO BE TAKEN THAT CENTRES OF PINTLES IN RUDDER ARE IN LINE WITH CENTRES OF HOLES IN GUDGEONS



ENLARGED SKETCH OF STOPPER
RUDDER TO HEEL OVER TO 45°

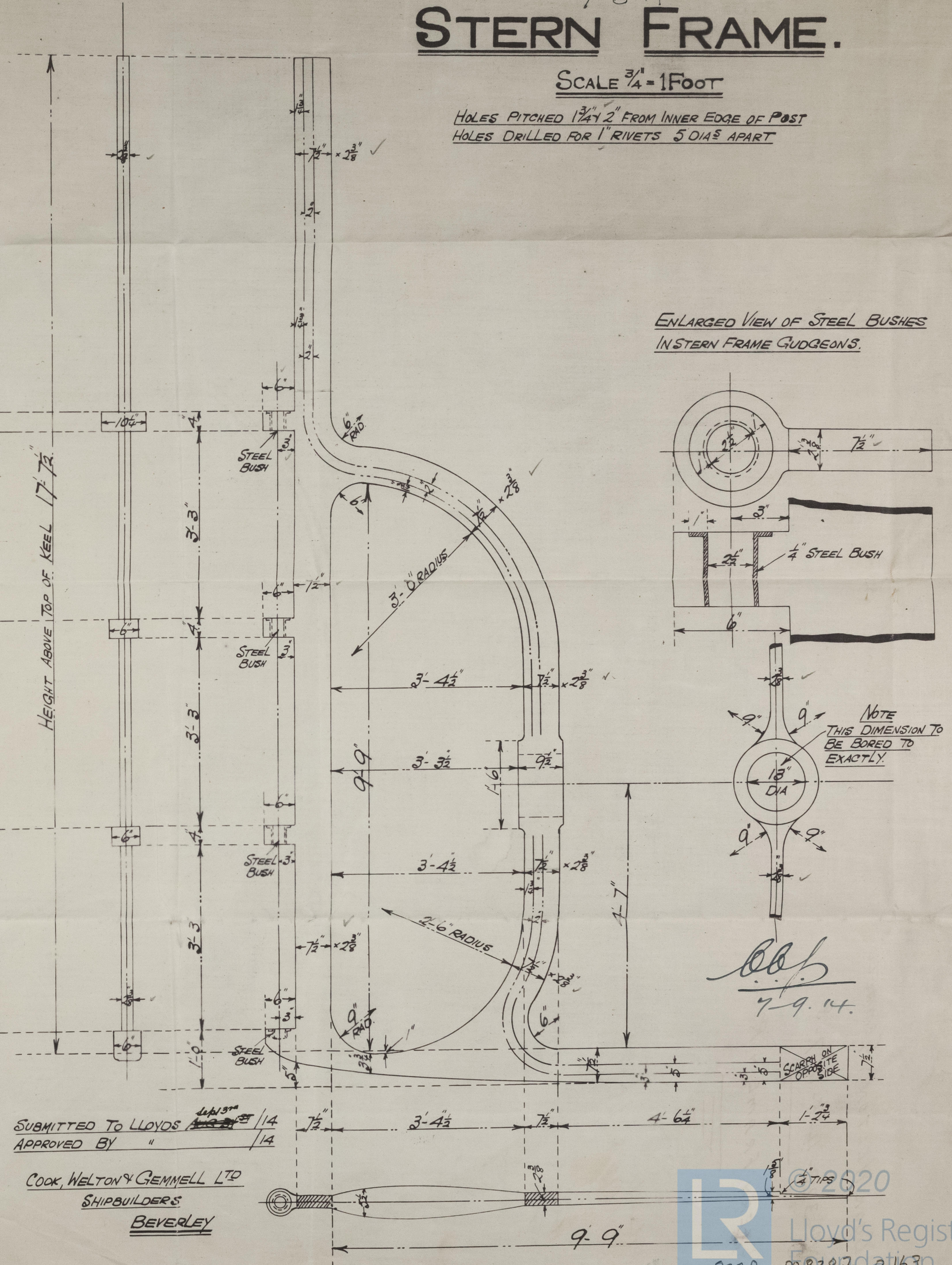
N^{OS} 323-4-5-6-7 & 8.



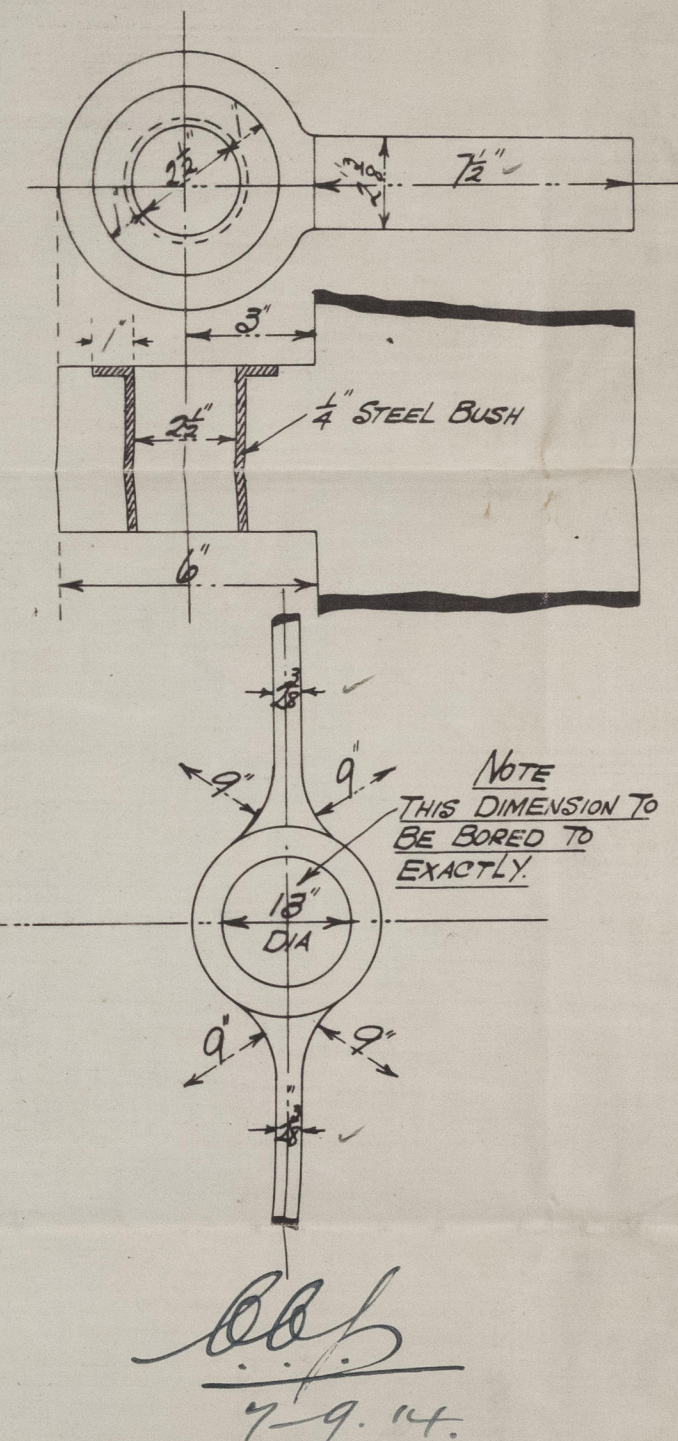
STERN FRAME.

SCALE $\frac{3}{4}$ " = 1 FOOT

HOLES PITCHED 1 1/4" 2" FROM INNER EDGE OF POST
HOLES DRILLED FOR 1" RIVETS 5 DIA 5 APART



ENLARGED VIEW OF STEEL BUSHES
IN STERN FRAME GUDGEONS.



SUBMITTED TO LLOYDS 14/14
APPROVED BY " 14/14

COOK, WELTON & GEMMELL LTD
SHIPBUILDERS
BEVERLEY

COOK WELTON & GEMMELL

N^{os} 323-4-5-6-7-8

STERN FRAME & RUDDER



s/s *Flandre*

Hull Rpt No 28862

s/s *Flying Wing* Hull Rpt No 28894.

(325) *"Carilon"* 28921

(326) *"War Wing"* 29140.

(327) *"Gelsina"* 29142.

(328) *"Nipanti"* 29215

008279-008287-0163



© 2020

Lloyd's Register
Foundation