

No 133-4

STERN FRAME & RUDDER

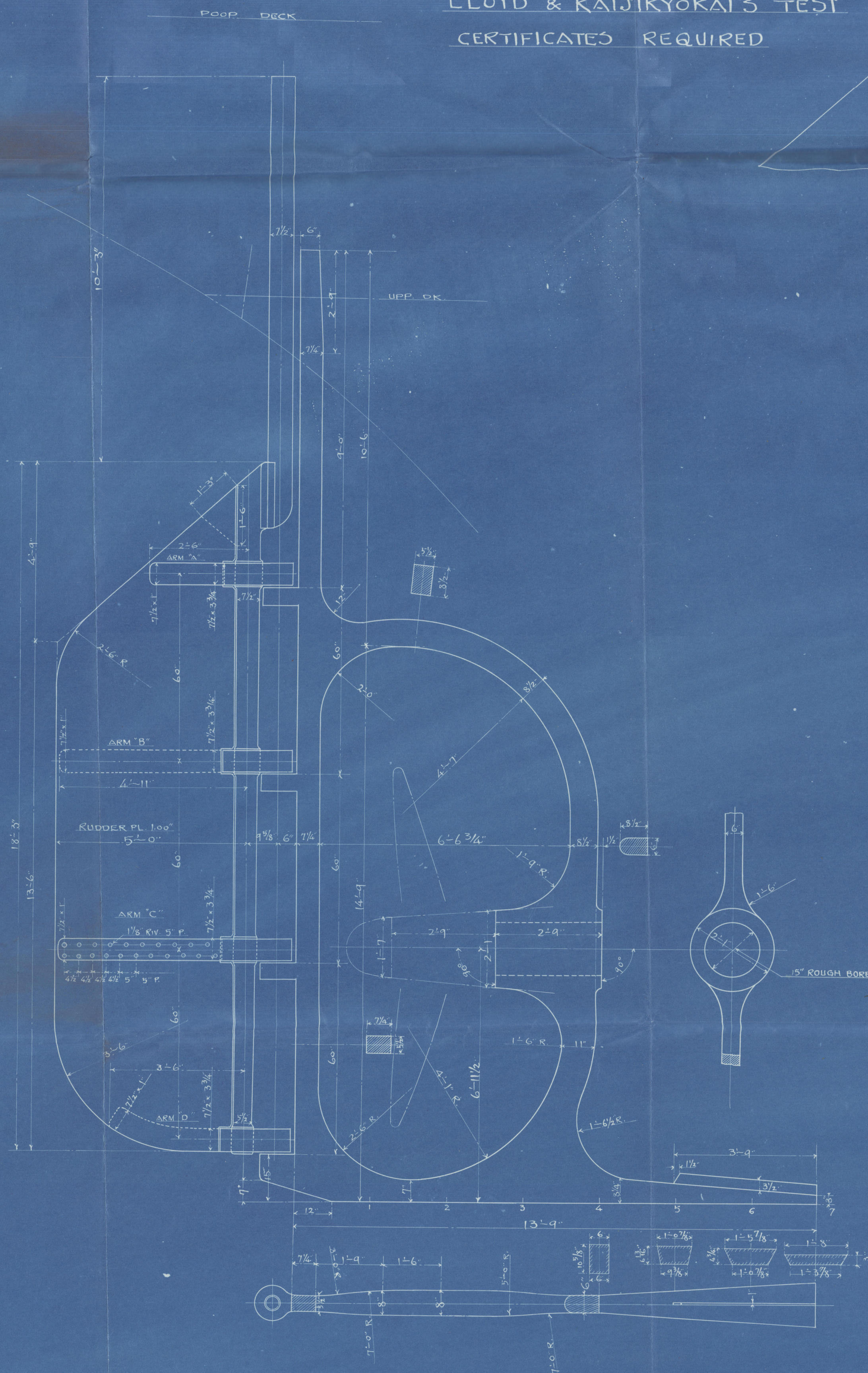
SCALE $\frac{1\frac{1}{2}"}{2"} = 1'-0"$

MATERIALS

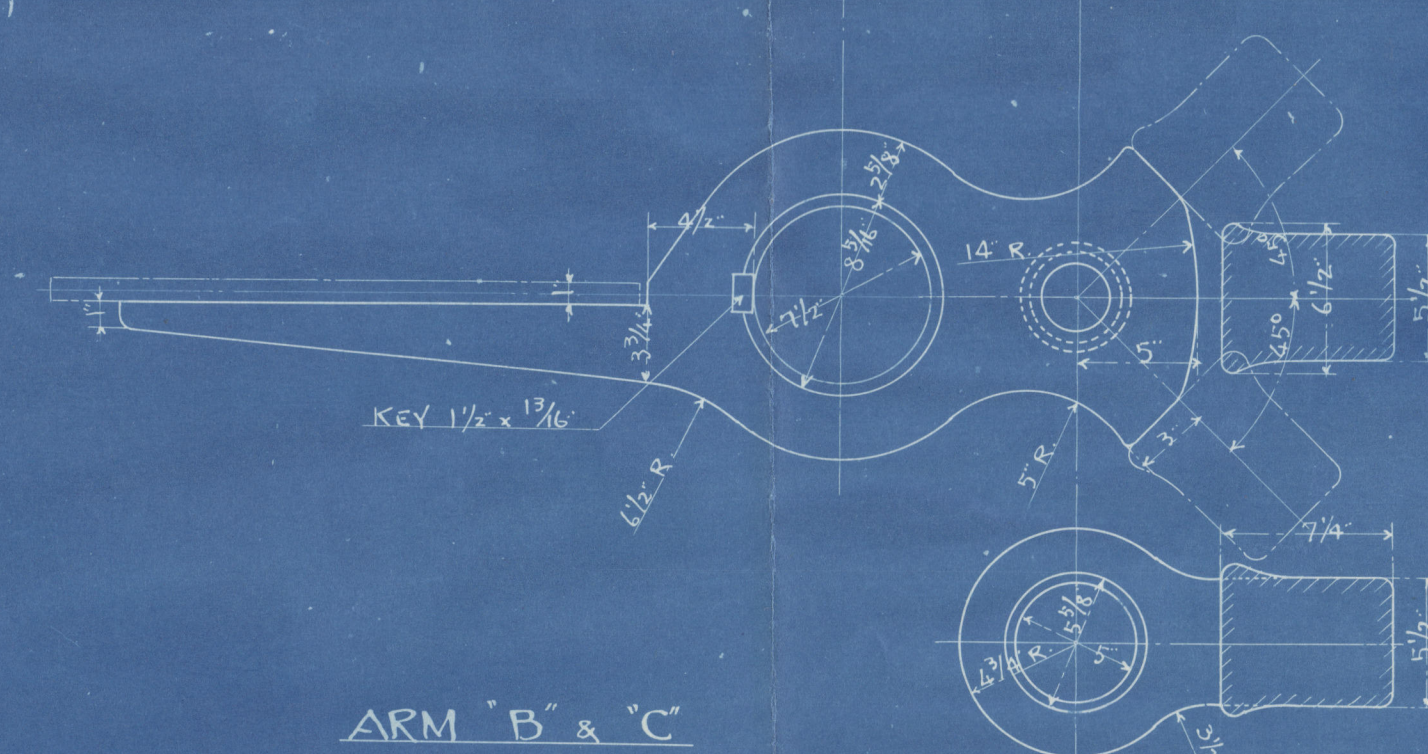
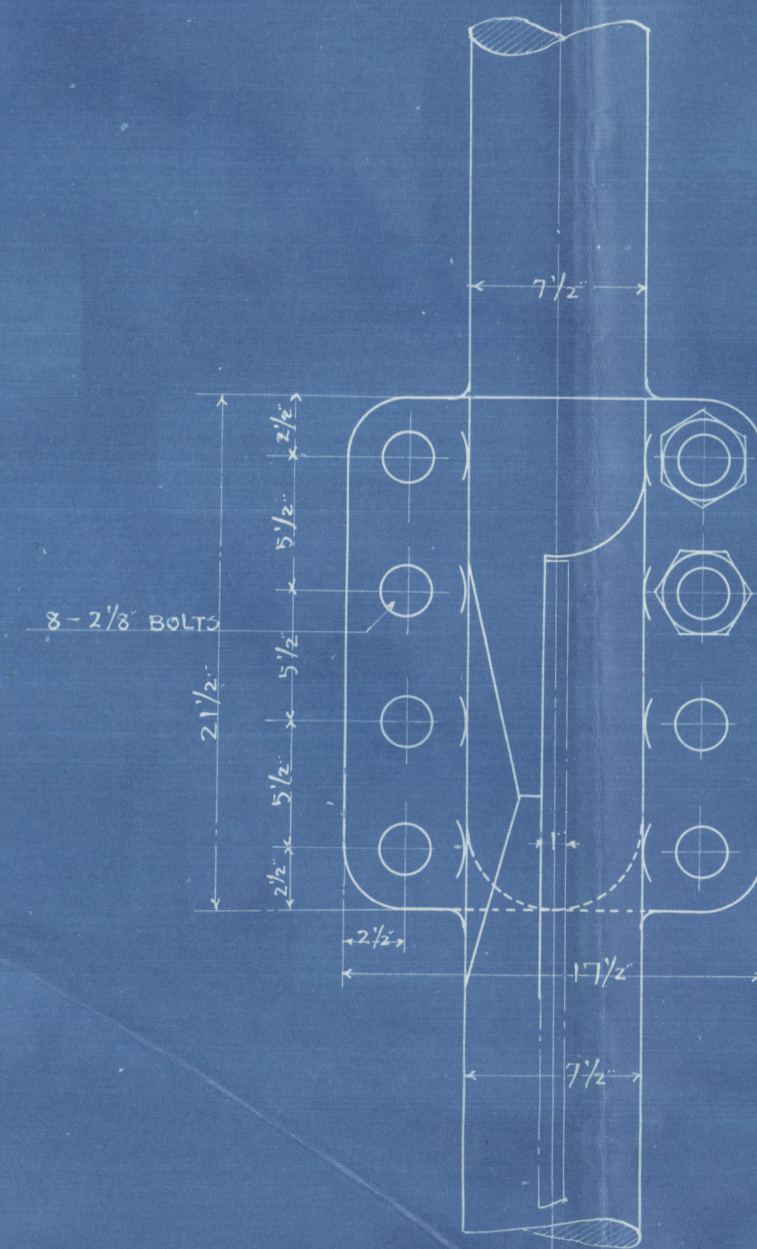
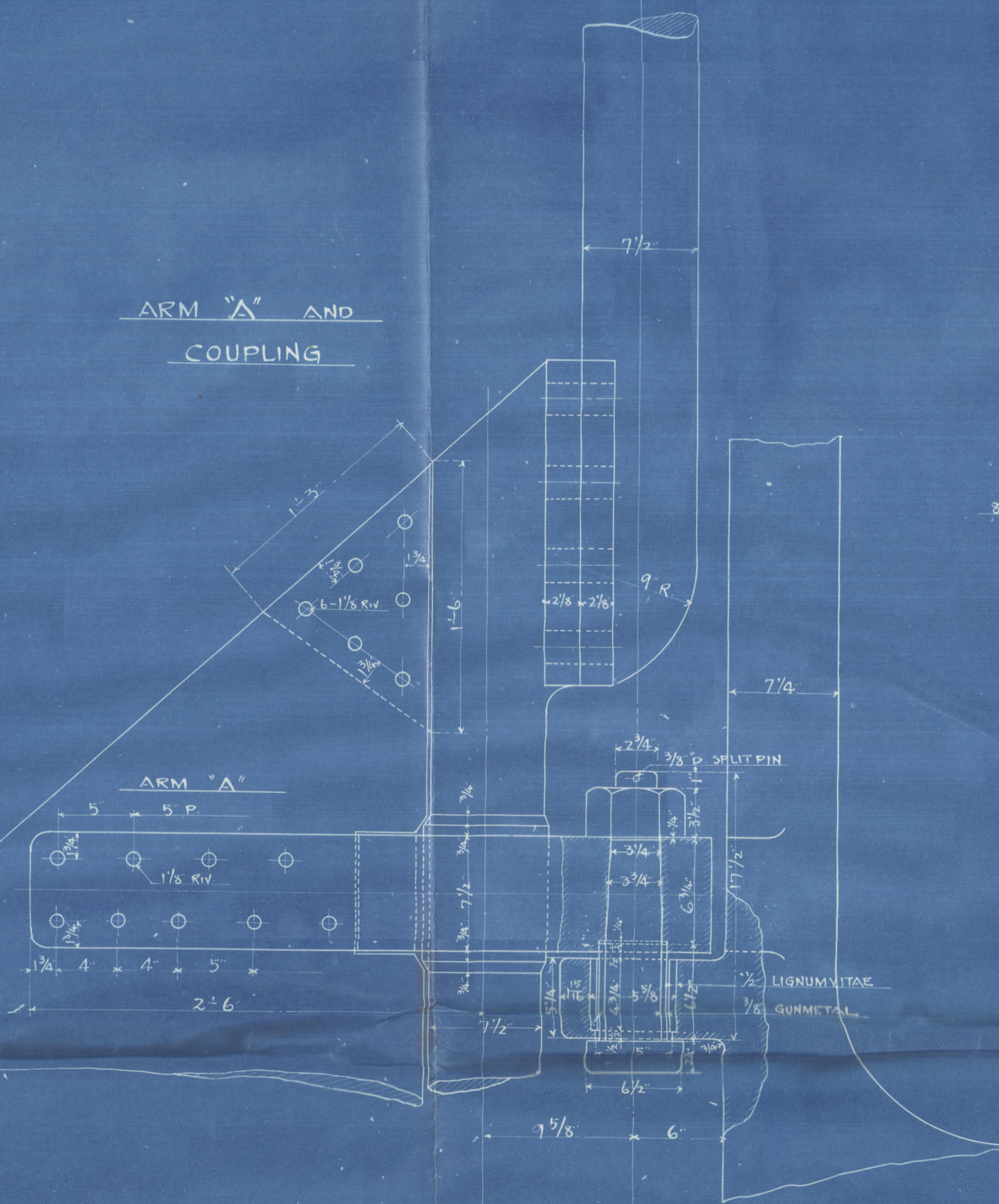
RUDDER STOCK	FORGED STEEL
MAIN PIECE, ARMS & PINTLES	" "
STERN FRAME	CAST STEEL
A	80.05 #
D	3.01 FT.
A x D	240.95
SPEED	UNDER 12 KNOTS

2 OFF.

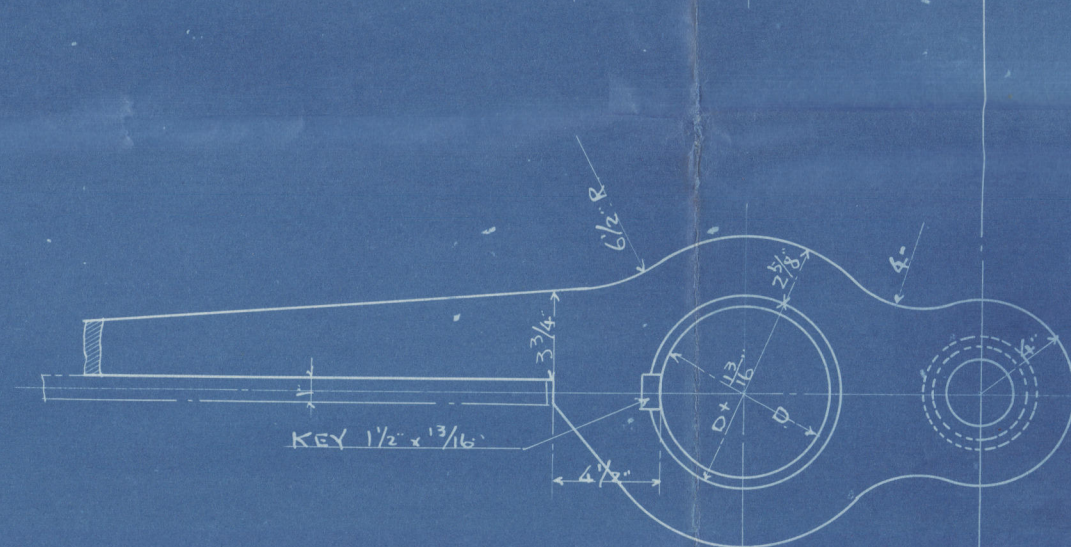
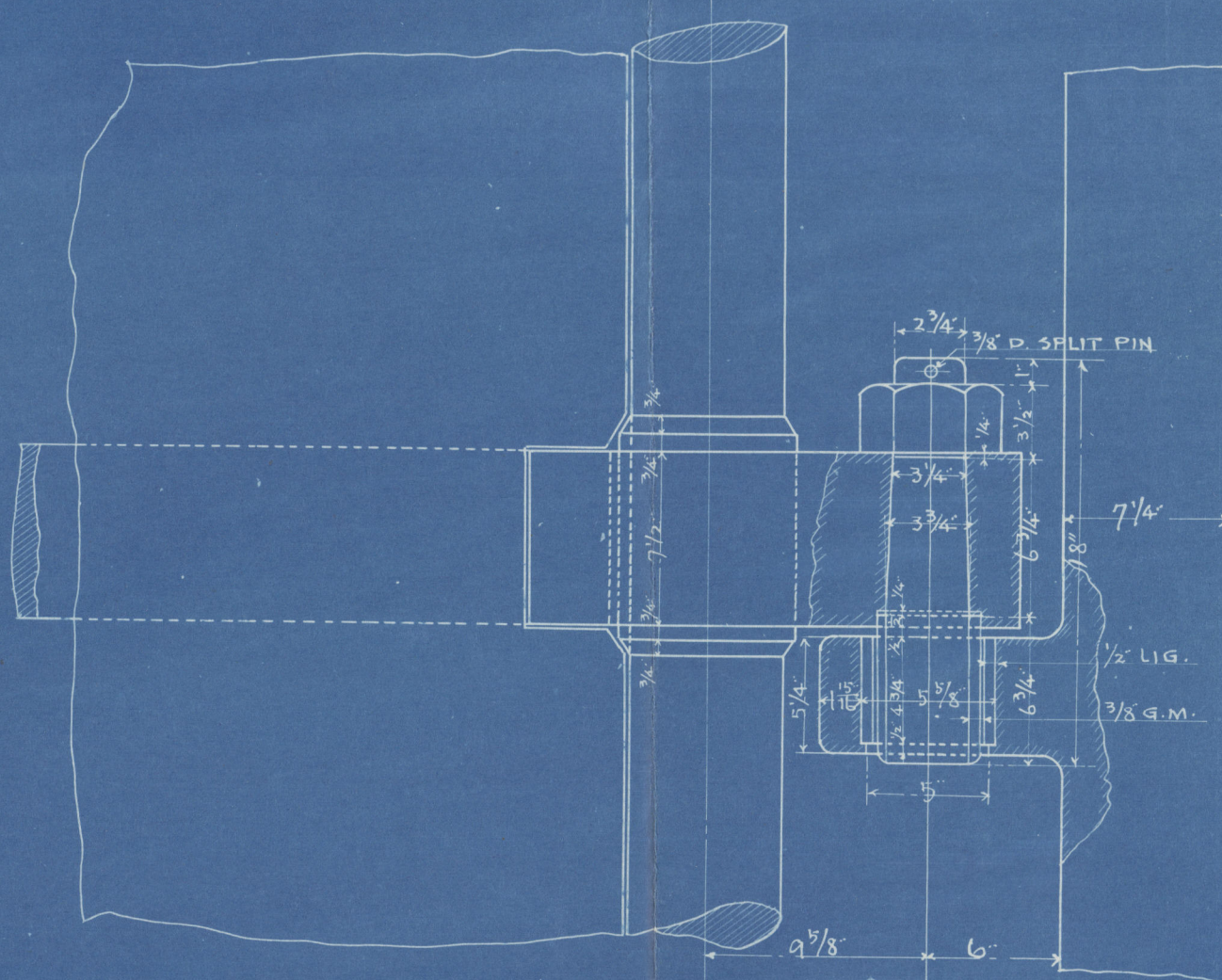
LLOYD & KAIJIKYOKAI'S TEST
CERTIFICATES REQUIRED



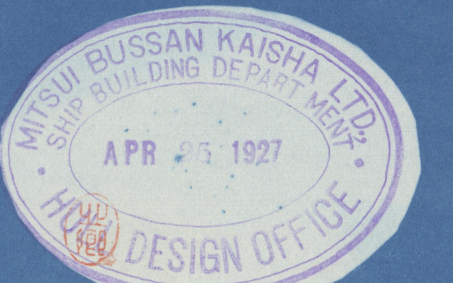
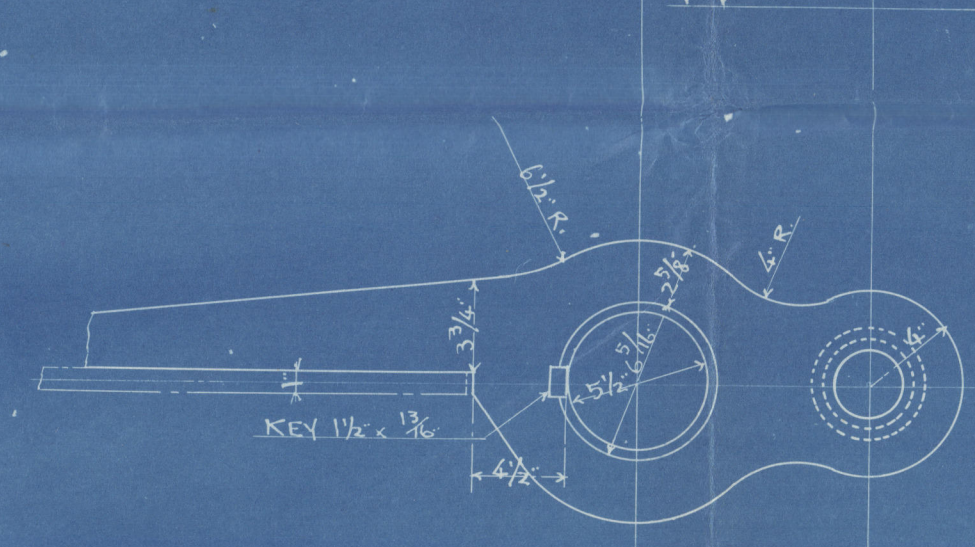
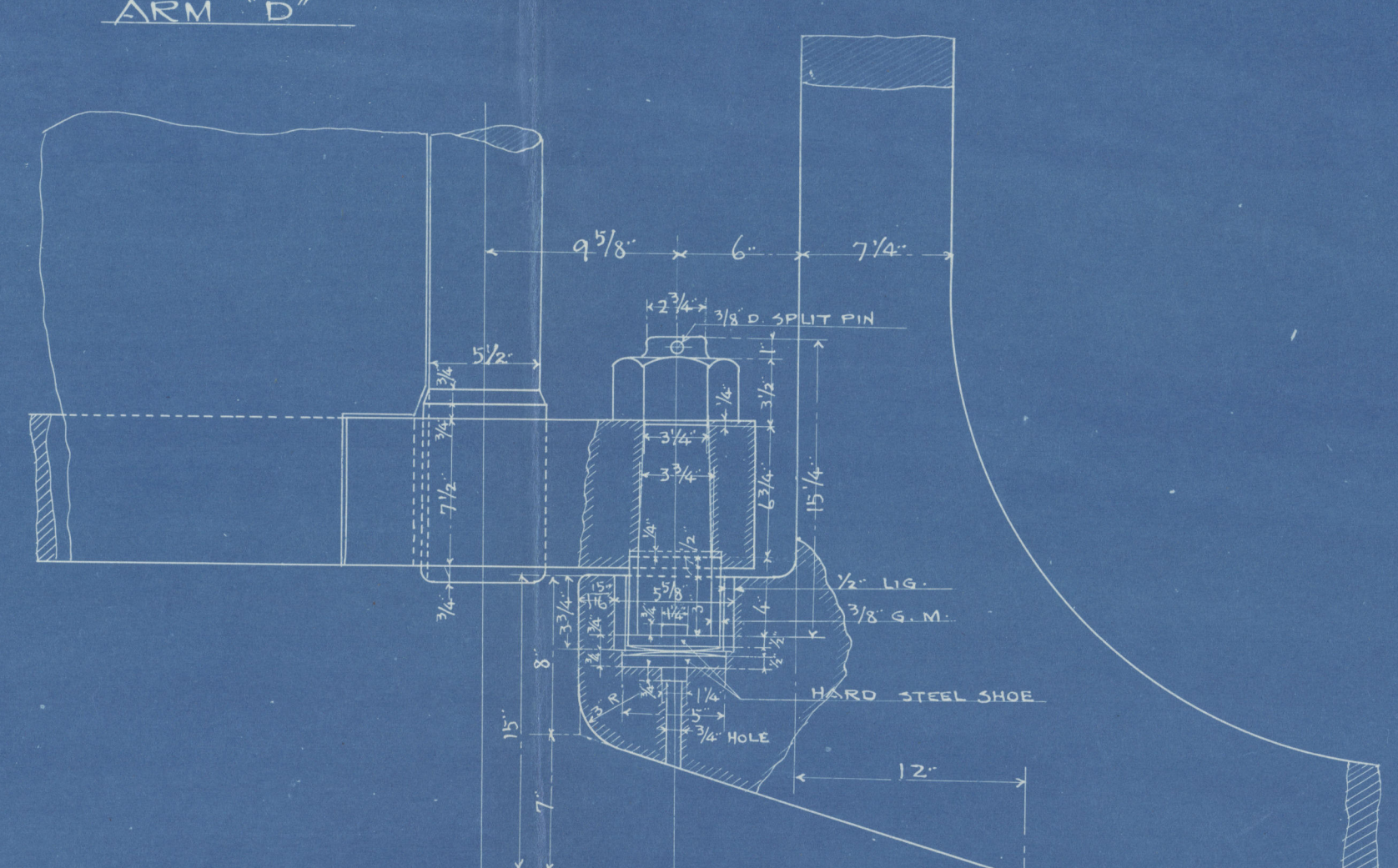
ARM "A" AND COUPLING



ARM "B" & "C"



ARM "D"



London Office Copy

Reedder & Stoen frame.

S.S., "TAKAMISAN MARU" 2
GEN. BOX
KOBE 6143.



© 2021

Lloyd's Register
Foundation