

# No 419 MIDSHIP SECTION.

SCALE 1/2" TO ONE FOOT.



PRINCIPAL DIMENSIONS.	
LENGTH BETWEEN P.E.	345'-0"
BREADTH MOULDED	48'-0"
DEPTH TO A.W.N. DK.	30'-0"
TWEEN DK. HEIGHT	8'-6"
POOP BRIDGE & F'CASTLE DK. HEIGHT	7'-6"
LENGTH OF BRIDGE	73'-6"

SCANTLING NUMBERS.	
B.	48
D.	22
TRANSVERSE NO.	70
L.	345
LONGITUDINAL NO.	24150
1/2 D. TO A.W.N. DK.	11.5
d.	18'-2"

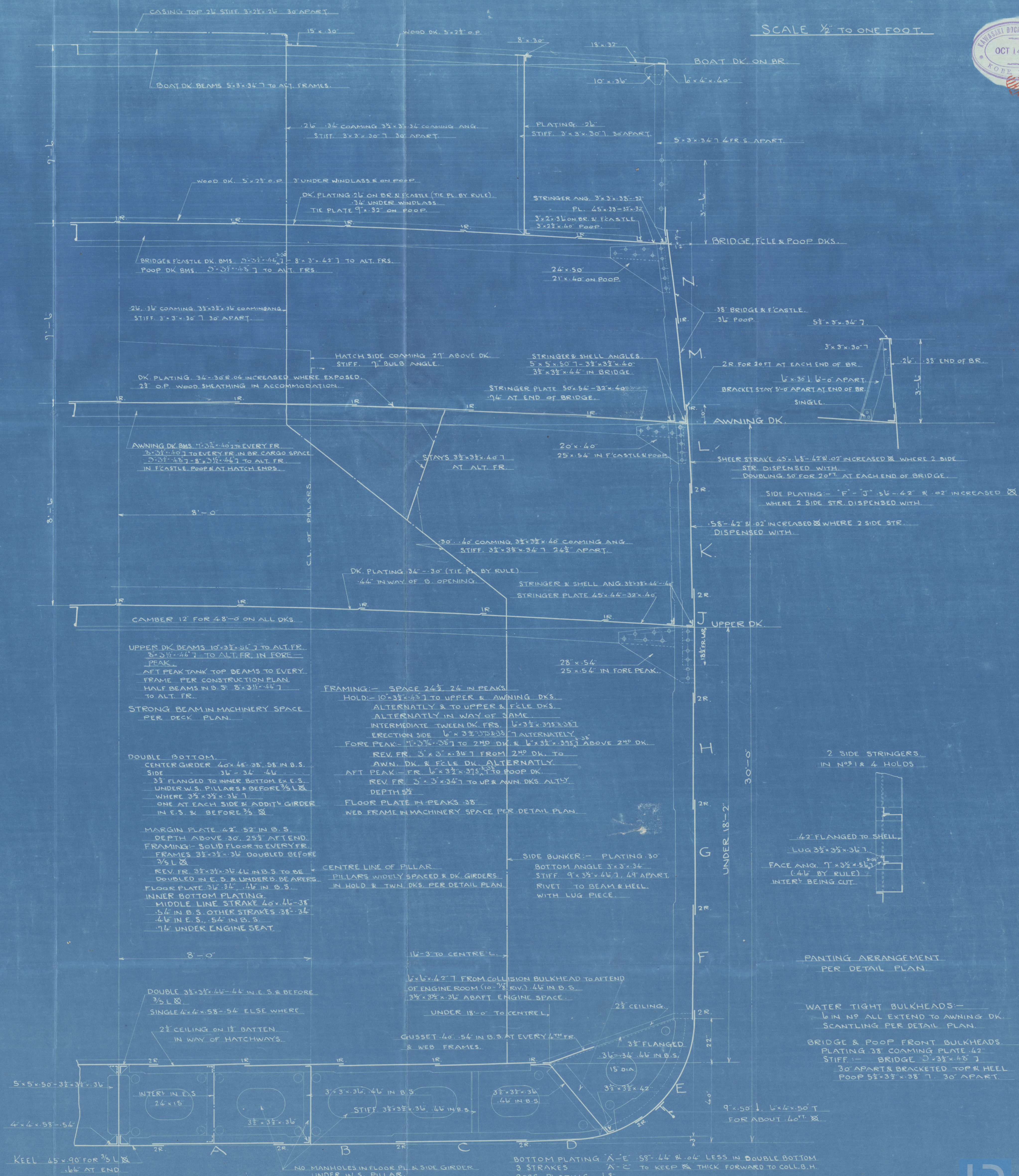
EQUIPMENT NUMBER.	
L x (B+D)	24150
A.W.N. DK. (345x8x75)	2070
ERECTOR'S (130.62x7.5x75)	734.74
DECK HOUSES (69.42x7.5x5)	260.32
NUMERAL	27,215.06

EQUIPMENTS	
2-BOWER ANCHORS (STOCKLESS) 52 1/2 CWT (48 3/4 CWT BY RULE)	
1-ANCHOR (COMMON) 14 (13)	
1-KEGGE (COMMON) 16 (5 3/4)	
270 FATHOMS 2 1/4" STUD CHAIN CABLE (2 BY RULE)	
90 4 3/4" STEEL WIRE FOR STREAM ANCHOR	
120 4" TOWLINE	
4 COILS OF 90 FATHOMS OF 7 MANILA WARPS.	

ITEMS	ROWS OF RIVETS IN BUTTS	ENDS
DR. F'CASTLE POOP DKS. STRINGER PL. PLATES	2	2
POOP DECK TIE PLATE	1	1
AWNING DECK STRINGER PLATE	3	3
UPPER DECK STRINGER PLATE	3	2
BR. F'CASTLE & POOP SIDE PLATING	1	2
AWNING DK. SHEER STRAKE	4	3-2
STRAKE BELOW	3	3-2
SIDE PLATING OF SHELL	3	3-2
BOTTOM PLATING OF SHELL	3	3
BOSS PLATING	4	4
MIDDLE STRAKE OF INNER BOTTOM	3	1
INNER BOTTOM PLATING	2	2
MARGIN PLATE	3	3-2
CENTRE GIRDER	4	4-3
KEEL PLATE	4	4-3

ITEM	RIVETING	PITCH C.T.C. IN DIA. OF RIV.
FRAME TO SHELL	1 1/2" IN DIA. OF RIV.	1 1/2" IN DIA. OF RIV.
FLOORS IN ALT. PEAK	5/8"	5/8"
REV. FR.	5/8"	5/8"
SHELL PLATE BUTTS	3/4" ON 4" LUG BUTTLAP	3/4" ON 4" LUG BUTTLAP
SEAMS	4"	4"
DECK PLATE TO BEAMS	7/8" ON BEAMS TO ALT. FR.	7/8" ON BEAMS TO ALT. FR.
BUTTS OF STRINGER PLATE	3/4"	3/4"
TIE	4"	4"
DECK	4"	4"
EDGES	4 1/2"	4 1/2"
GUNWALE ANGLE	4 1/2"	4 1/2"
DK STRINGER ANGLE	7"	7"
DOUBLE BOTTOM	4"	4"
BUTTS OF MARGIN PLATE & C. GIRDER	4"	4"
EDGES OF INNER BOTTOM PL.	4 1/2"	4 1/2"
MARGIN ANGLE	4 1/2"	4 1/2"
KEEL	5"	5"
FR. TO FLOOR PL. & REV. FR.	7"	7"
VERTICAL ANGLE ON CENTRE GIRDER	5"	5"
SIDE	7"	7"
ANGLE AT TOP OF CENTRE GIRDER	7.5 WHERE W.T.	7.5 WHERE W.T.
SIDE GIRDER ANGLE	4 RIVETS SET. FR.	4 RIVETS SET. FR.
BULKHEAD PLATING	5"	5"
ROUNDNESS ANGLE	7"	7"
STIFFENERS	7"	7"
SIDE STRINGER FACE ANGLE	7"	7"
SHELL PLATE OF INTERCOSTAL	4 RIVETS SET. FR.	4 RIVETS SET. FR.
W.S. PILLARS & GIRDERS	7"	7"
GIRDER TO DECK	5"	5"
STEM STERN FRAME	5"	5"

FORGING & CASTING	
STEM	10.2 1/2" FORGED STEEL (1 1/2" BY RULE)
STERN FR. (PROPELLER POST 1 1/2" x 1 1/2")	CAST STEEL
RUDDER	8 1/2" x 1 1/2"
RUDDER FRAME PER DETAIL PLAN	





K419  
S/S TASMANIA MARU

Midship Section

Kobe 2648

S/S. "TASMANIA MARU"

Midship Section



© 2021

Lloyd's Register  
Foundation

008248-008257-0138