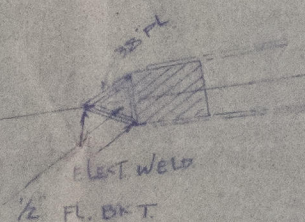
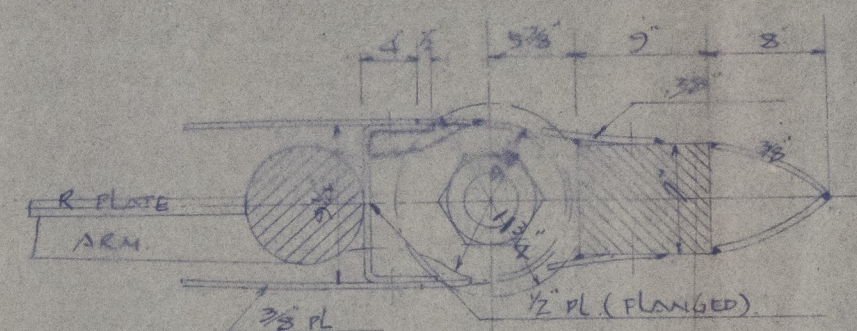
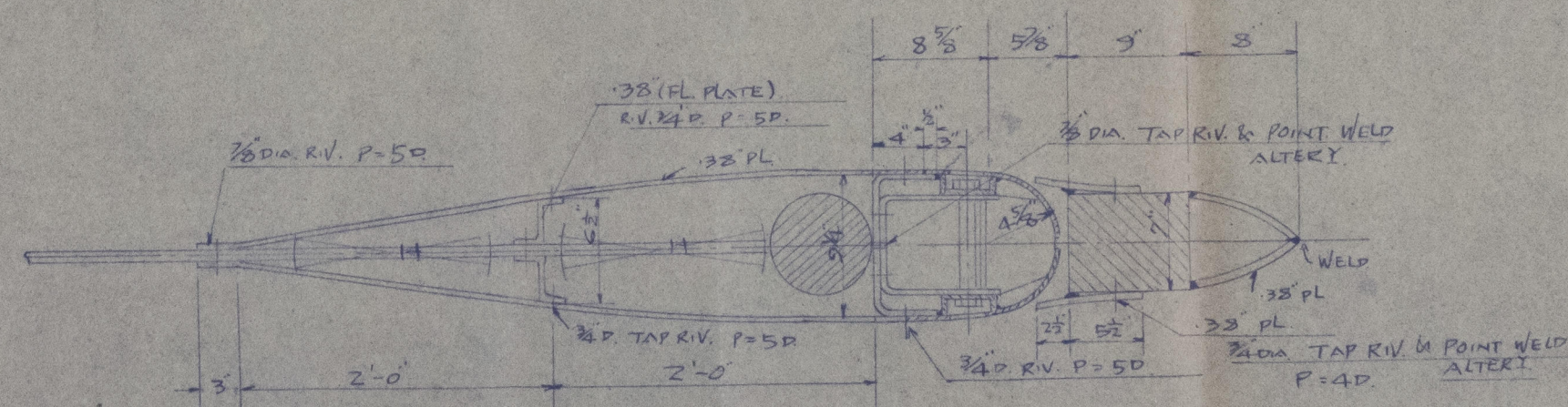


SCALE $\frac{1}{2}'' = 1'-0''$

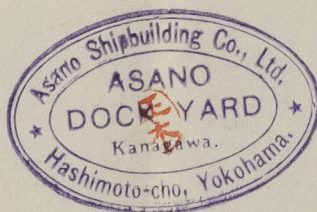

$$1 = 1 - 0$$


SECTION C-D



DEC. 2ND. 1930.

S.S. "TASMANIA MARU"
ALTERATION OF RUDDER.
Dec. 10th. 1930.



© 2021

Lloyd's Register
Foundation

-1 JAN 1931

008248-008257-0137