

10 OCT 1944

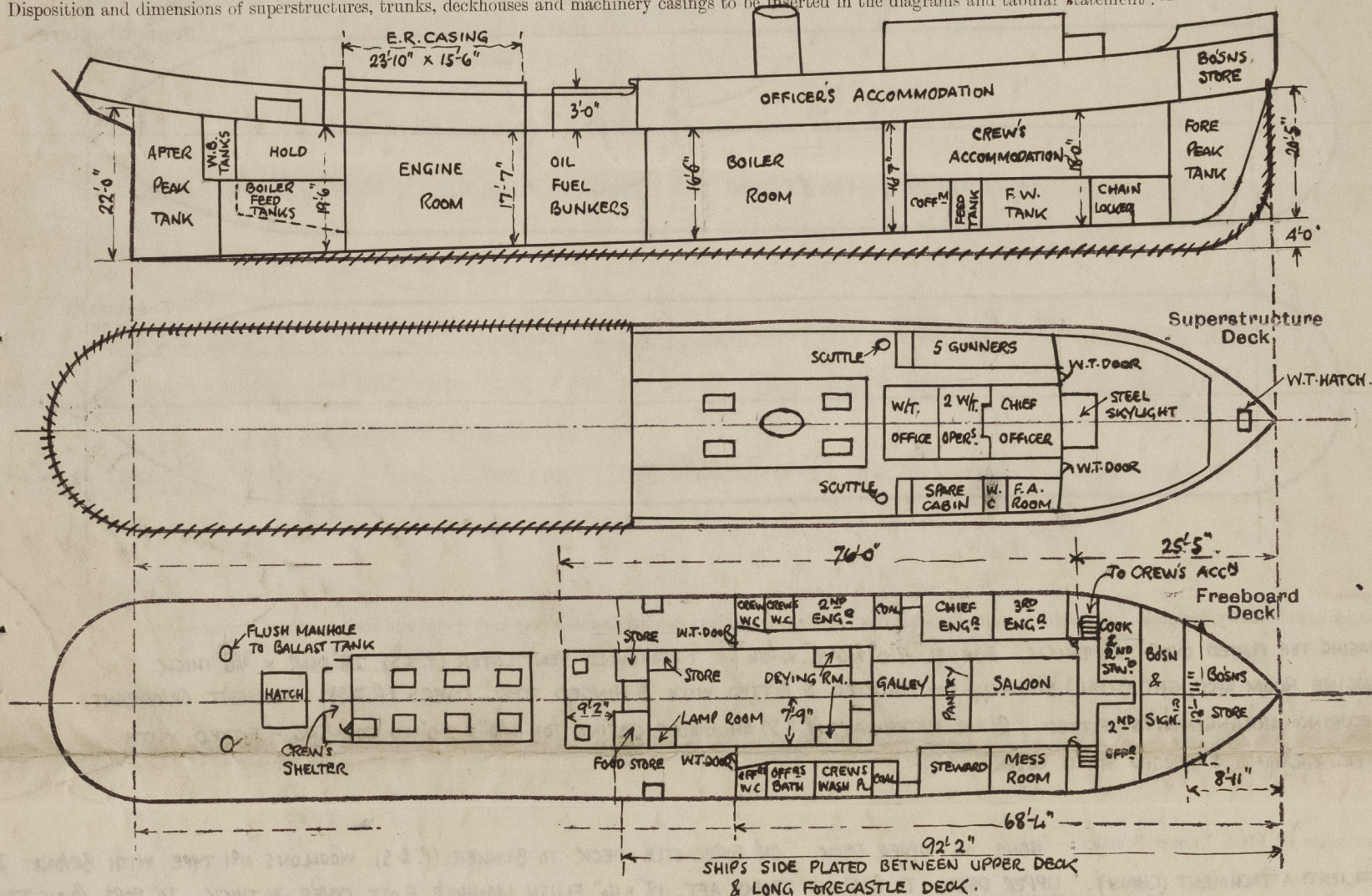
Lloyd's Register of Shipping.

SURVEYS FOR FREEBOARD.

(CONDITIONS OF ASSIGNMENT.)

Ship's Name **X "ENIGMA" X**Port of Survey **HULL.**Official Number **✓**Surveyor's Signature **J. Macleod**Nationality and Port of Registry **BRITISH.** **✓**Date of Survey **During construction**

Disposition and dimensions of superstructures, trunks, deckhouses and machinery casings to be inserted in the diagrams and tabular statement:—



Particulars of Superstructures, Trunks, Casings, Deckhouses.

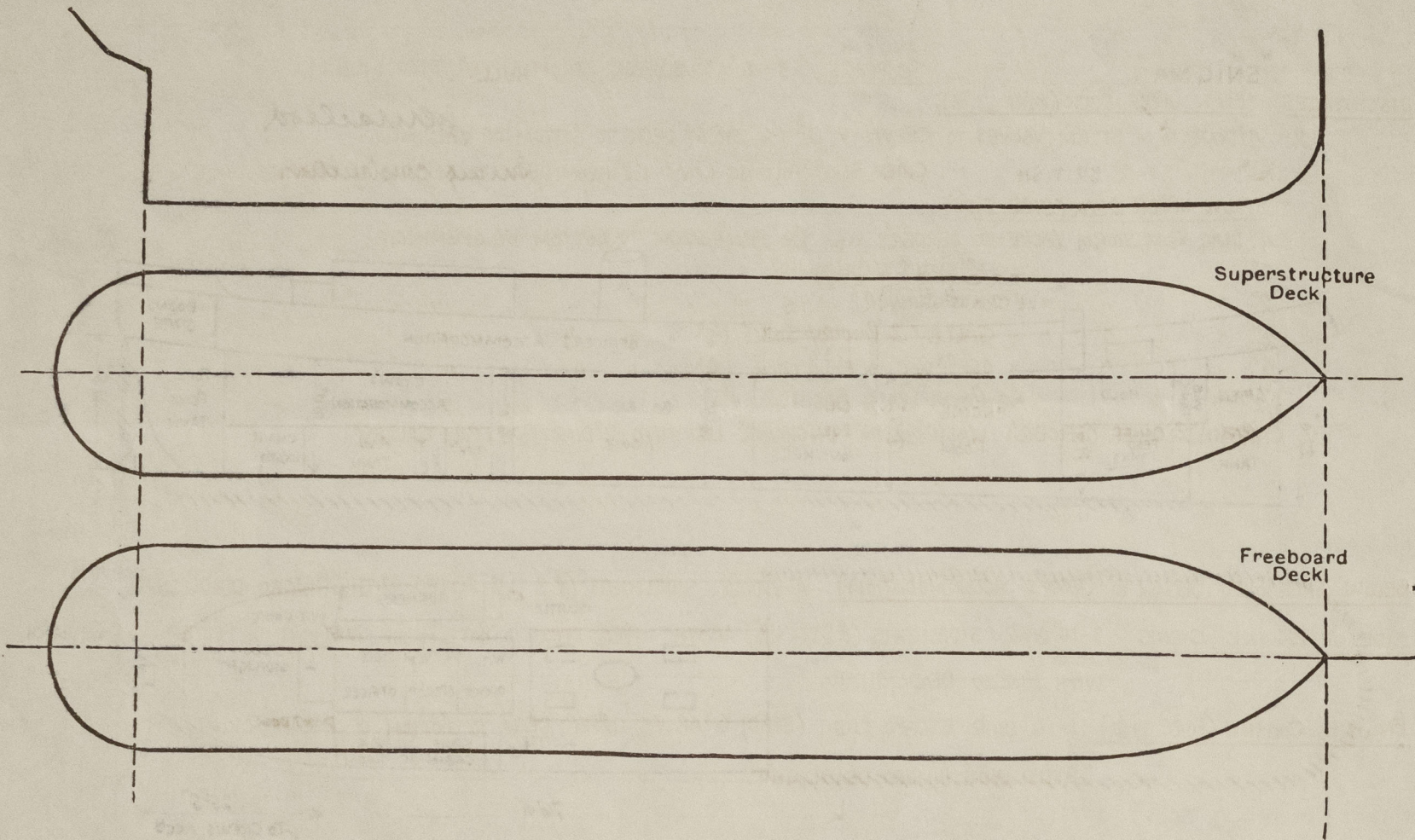
	Coaming	Plating	Stiffeners	Spacing	End Attachments of Stiffeners	Size of Openings	Height of Sills	Height of Casings
Poop Bulkhead ...								
Raised Quarter Deck Bulkhead ...								
Bridge, After Bulkhead ...								
Bridge, Forward Bulkhead ...								
Forecastle Bulkhead ...								
Trunk, Aft ... (FRAME NOS 32-37)	32	32	4" x 3" x 30" T	30"	BKTS. AT TOP	2 O.T. HATCHWAYS ON TRUNK TOP 2'6" x 2'6"	✓	3'-0"
Trunk, Forward ...	✓	✓						
Exposed Machinery Casings on Freeboard or Raised Quarter Deck ...	32	32	3" x 2 1/2" x 30" T	30"	BKTS AT TOP	3' 3/2" x 2'2"	24"	4'-0" AT C.L. 3'-0" " SIDE
Exposed Machinery Casings on Superstructure Deck (BOILER CASING) ...	18" x 32	28	7 x 3" x 40" T 3 1/2" x 3" x 30" T	30"	BKTS. AT TOP	NONE	✓	7'-3"
Machinery Casings within Superstructures not fitted with Class I Closing Appliances ...	✓	✓						
Deckhouses on Flush Deck Ships ...	✓	✓						

Particulars of Closing Appliances (state if capable of being manipulated from both sides).

Poop Bulkhead ...	
Raised Quarter Deck Bulkhead ...	
Bridge, After Bulkhead ...	
Bridge, Forward Bulkhead ...	
Forecastle Bulkhead ...	
Exposed Machinery Casings on Freeboard or Raised Quarter Decks ...	TO BOBNS & SIGNALLER (Q) & CHIEF, 2ND & 3RD ENGINEERS, COOK & 2ND STEWARD & CREW'S W.Cs (PORT SIDE) WOOD DOORS 4'-10" x 1'-8" - 15" SILLS. TO CREW'S ENTRANCE (P. & S) WOOD DOORS 4'-7" x 1'-8" - 14" SILLS. TO 2ND OFFICER, MESS ROOM, STEWARD, CREW'S WASH PLACE, OFFICERS BATH ROOM & W.C, DINING, SALOON & PANTRY (STBD SIDE) WOOD DOORS 4'-10" x 1'-8" - 15" SILLS. TO GALLEY STEEL DOOR (P. & S) 4'-10" x 1'-8" - 12" SILL. TO DRYING ROOM (P. & S) STEEL DOOR 4'-2" x 1'-8" - 23" SILLS. TO BOILER ROOM (P. & S) STEEL DOOR 3'-11" x 1'-8" - 24" SILL. <i>Hinged steel w.t. doors.</i>
Exposed Machinery Casings on Superstructure Decks ...	ALL DOORS FITTED WITH SPRING LOCKS OPERATED FROM BOTH SIDES.
Machinery Casings within Superstructures not fitted with Class I Closing Appliances ...	✓
Deckhouses on Flush Deck Ships ...	✓

PARTICULARS OF PROTECTION TO OPENINGS, ETC.

The following diagrams should be used to indicate the positions of cargo and coaling hatchways, gangway, cargo and coaling ports, ventilators, companionways, etc., which would affect the seaworthiness of the ship:—



Particulars of fiddley, funnel and ventilator coamings, engine room skylight and other openings in machinery casing tops and their means of closing :—

CASING TOP PLATED OVER .28 THICK. FUNNEL 9'-0" x 6'-9" x 3/16". 1 STOKHOLD VENTILATOR (P. & S) 28" DIAR. x 3/16" THICK. ENGINE ROOM SKYLIGHT (STEEL) STRONGLY CONSTRUCTED & FITTED WITH 3 HINGED STEEL COVERS (P. & S). EFFICIENT QUADRANT SECURING ARRANGEMENTS FITTED. 2 AIR HATCHWAYS (P. & S) ON BOILER CASING TOP 4'-0" x 2'-0" x 6" COAMING. - FITTED WITH STEEL GRATING & HINGED STEEL COVER.

Particulars of Flush Bunker Scuttles:— NONE ON UPPER DECK. ON FORECASTLE DECK TO BUNKER (P. & S). WOOLLONS N°1 TYPE WITH BAYONET JOINT. EFFICIENT ATTACHMENT (CHAIN). UPPER DECK. TO BALLAST TANKS AFT. 18" x 14" FLUSH MANHOLE PLATE COVER .30 THICK. TO FORE PEAK TANK 18" x 14" STEEL PLATE COVER .30 THICK SECURED TO COAMING 8" HIGH BY $\frac{9}{8}$ " DIAR. STUDS SPACED $3\frac{1}{2}$ " APART.

Particulars of Companionways :— UPPER DECK.

ENGINE ROOM COMPANION (INSIDE CREW'S SHELTER) 1/2" D.I. PLATING. E.R. COAMING .30. HINGED TEAK DOOR 2" THICK. SILL 2 1/4", COMPANION TO CREW'S QUARTERS ON UPPER DECK FORWARD (P. & S). PLATING 3/16" THICK. STIFFENERS 2 1/2" x 2 1/2" x 1/4" Γ SPACED 36". WOOD DOORS 1'-9" x 1'-10" x 18" SILL (ENCLOSED IN PASSAGE). DOORS OPERATED FROM BOTH SIDES.

Particulars of Ventilators in exposed positions on freeboard and superstructure decks :— FORECASTLE DECK.

~~UPPER DECK~~

9" DIAR FRENCH HEAD VENT.- SUPPLY TO FAN. 1'-11" TO BOTTOM OF OPENING. & 2-G" DIA. MUSH. VENTS TO PASSAGE (ON TOP OF FORWARD SKYLIGHT).
8" " " " " " " " " " " " " BRACKETED TO SIDE OF SKYLIGHT.
6" " " " " " BO'SNS STORE 4'-0" " " " STAYED TO DECK.
6" " " " " " BO'SNS & SIGNALERS CABIN.- 3'-8" TO BOTTOM OF OPENING. STAYED TO DECK.
7" " " " " " (EXHAUST) FROM FOOD STORE (PORT) 2'-2" " " " "
8" " " " " " FIREMEN'S & SEAMEN'S MESS (P & S). 5'-2" TO BOTTOM OF OPENING. STAYED TO DECK.
5" " G.N.V. (VENT) TO COOK & STEWARD, COMPANIONWAY & 3RD ENG' & (STBD) TO 2ND OFFICER, COMPANIONWAY, & MESS ROOM -16" TO OPENING.
7" " FRENCH HEAD VENT TO GALLEY (PORT) IN PASSAGE - 31" TO BOTTOM OF OPENING.
6"x4" BUILT G.N.V. VENT TO CHIEF ENGINEER (PORT) & STEWARD (STBD) IN PASSAGE.- 16" TO BOTTOM OF OPENING.
7" DIAR. FRENCH HEAD VENT- GALLEY EXHAUST FROM FAN (STBD) 2'-9" " " " "
13" " " " FAN SUPPLY (P & S). 10'-0" TO BOTTOM OF OPENING. STAYED TO DECKHOUSE.
6" " MUSH. VENT. TO 2ND ENGINEER (PORT)
3" " " " TO CREW'S WASH PLACE & OFFICER'S BATH ROOM (STBD).
UPPER DECK AFT. G" DIAR.-FRENCH HEAD VENT. TO STEERING GEAR COMPI (P & S). 2'-5" TO BOTTOM OF OPENING.
G" " " " " " HOLD (P & S). " " " "
14" " " " " (INLET) AFTER END E.R. CASING. 3'-1" TO BOTTOM OF OPENING.
12" " " " " (EXHAUST) ABREAST E.R. 2'-6" " " " "

VENTILATORS SUPPLIED WITH CANVAS COVERS. F.H. VENTS WITH CANVAS COVERS. VENTILATOR COAMINGS OVER EFFICIENTLY STAYED TO DECK

VENTILATORS SUPPLIED WITH WOOD PLUGS
& CANVAS COVERS. F.H. VENTS SUPPLIED
WITH CANVAS COVERS.
VENTILATOR COAMINGS OVER 36" HIGH
EFFICIENTLY STAYED TO DECK OR DECKHOUSE.

Particulars of Air Pipes in exposed positions on freeboard, raised quarter, or superstructure decks :— FORECASTLE DECK.

FORE PEAK TANK - 3" DIAR. 3'-1" TO OPENING. PROTECTED BY SPARKNETTING PLATE.

FRESH WATER TANK (P. & S). 2" DIAR. 5" TO OPENING.

FEED WATER TANK (P. & S). 2" " 5" " "

COFFERDAM (P. & S). 2" " 5" " "

OIL FUEL BUNKER (P. & S). 6" " 11" " "

AIR PIPES TO TANKS SUPPLIED WITH WOOD PLUGS.

" " " OIL FUEL TANKS SUPPLIED WITH 2 GAUZE WIRE COVERS.

UPPER DECK. OIL FUEL SIDE BUNKER (P. & S). 3" DIAR. 5'-6" TO OPENING. PROTECTED BY FORECASTLE SIDE PLATING.

OIL FUEL BUNKER (P. & S). 3" " 3'-3" " " (ABOVE TRUNK TOP). PROTECTED BY DECKHOUSE.

BALLAST TANK AFT (P. & S). 2" " 2'-5" " " PROTECTED BY BULWARK.

BOILER FEED TANK (P. & S). 2" " 2'-5" " " " " " "

AFTER PEAK TANK (P. & S). 3" " 2'-4" " " " " " "

Particulars of Gangway Cargo and Coaling Ports:—

ENIGMA

NONE.

Particulars of Scuppers and Sanitary Discharge Pipes:— SCUPPERS. 5- 6" x 3" SCUPPERS FROM UPPER DECK (P. & S).

DISCHARGES. BELOW UPPER DECK (PORT SIDE).

2- 4" DIAR. G.M. STORM VALVES TO CREWS W.C.³ 1 1/6" FROM DECK TO BOTTOM OF OPENING.

1 1/2" " " " " CHIEF ENG^{RS} FOLDING LAVY - 1-5" FROM DECK TO BOTTOM OF OPENING.

BELOW UPPER DECK (STBD SIDE).

4" DIAR. G.M. STORM VALVE TO OFFICER'S W.C. 1'6" FROM DECK TO BOTTOM OF OPENING.

2" " " " " TO OFF^{RS} BATH & W. BASIN. 1'-5" " " " " " "

2" " " " " CREW'S SHOWER " 1'-5" " " " " " "

2" " " " " GALLEY & PANTRY SINKS. 1 1/2" " " " " "

4" " " " " OFFERS W.C. ON FOLEY DECK 1/6" " " " " "

1 1/2" " " " " F.A. ROOM WASH BASIN. 1 5/8" " " " " "

CAPTAIN & CHIEF OFFICER'S WASH BASIN - DISCHARGE LED INTO 2" DIAR. PIPE FROM GALLEY.

Particulars of Side Scuttles :—

BELOW FREEBOARD DECK (TO CREW'S ACCOMMODATION). A-8" DIAR. SIDELIGHTS (P & S) & FITTED WITH HINGED DEADLIGHTS.

SIDE OF ENGINE CASING. 3-10" DIAR. SIDELIGHTS (P&S) - $1\frac{1}{2}$ " ABOVE UPPER DECK TO BOTTOM OF SIDELIGHT & FITTED

WITH HINGED DEADLIGHTS.

ENGINE CASING (FORE END) 1-16" DIAR. ESCAPE LIGHT (STBD) 6" ABOVE UPPER DECK TO BOTTOM OF ESCAPE LIGHT &

FITTED WITH HINGED DEADLIGHT.

Vertical distance of Sill of lowest Side Scuttle above top of keel $39\frac{1}{6}$ ' FROM F.P. $15\frac{1}{2}$ " ABOVE TOP OF KEEL.

Particulars of Guard Rails :—

FORECASTLE DECK (FORWARD) 3'-9" HIGH WITH 3 RODS. STANCHIONS SPACED 4'-0".

" " (AFTER END) $3\frac{1}{6}$ " " " 3 "

" " AFT (AT SIDES) . 1'10" " " 2 "

Particulars of Gangways, Lifelines, etc. :—


NONE

Particulars of Freeing Arrangements.						
	Length of Bulwark	Height of Bulwark	Size of Freeing Ports	Number each side	Area each side	Rule area each side
After Well	6'7"10"	3'6"	2'6" x 1'6"	5	16.25 sf.	13.6 sf.
Forward Well	✓					

State position of each freeing port { After Well :— FROM A.P. 24'3" - 39'3" - 52'0" - 65'0" - 79'6".
(F. and A. position and height above deck edge) { Forward Well :— 7 1/2" ABOVE DECK EDGE

State whether the freeing ports are fitted with shutters, bars, or rails, and give particulars of such :— HINGED PORT - BALANCED TYPE.

Additional area where sheer is less than standard.



© 2021
Lloyd's Register
Foundation

PARTICULARS OF PROTECTION TO OPENINGS, ETC.

HATCHWAYS ON FREEBOARD AND SUPERSTRUCTURE DECKS.									
Description of Hatchway ...			TRUNK TOP TO AFTER OIL FUEL BUNKERS.	UPPER DECK TO SIDE OIL FUEL BUNKERS	UPPER DECK HOLD ART	FORECASTLE DECK BO'SNS STORE FORWARD			
Dimensions of Hatchway ...			2- 2'6" x 2'6"	2(P&S) 2'6" x 2'4 1/2"	8'0" x 6'0" 24' x 8'0"	2'9" x 2'9"			
COAMINGS	{	Height above Deck or TRUNK TOP...	12"	18"	24"	12"			
		Thickness { Sides ...	30 ✓	30 ✓	40 ✓	37 1/2 ✓			
		Stiffeners ... Ends ...	30	30	40	37 1/2			
		Brackets, Stays ...	NONE	NONE	NONE	NONE			
HATCH BEAMS	{	Number ...							
		Spacing ...							
		Scantling and Sketch ...							
		Bearing Surface ...	NONE ✓	NONE ✓	NONE	NONE ✓			
FORE AND AFTERS	{	Number ...							
		Spacing ...							
		Unsupported Lengths Scantling* and Sketch ...	NONE ✓	NONE ✓	NONE	NONE ✓			
		Bearing Surface ...							
HATCH COVERS	{	Material ...	STEEL PLATE COVER	STEEL PLATE COVER	PINE	STEEL PLATE COVER			
		Thickness ...	50	50	3"	30			
		How fitted (incl) ...	SECURED BY M.I. EYEBOLTS	SECURED BY M.I. EYEBOLTS	F. & A.	HINGED W.T. PLATE.			
		Bearing Surface ...	& G.M. TOGGLES.	& G.M. TOGGLES	3"				
Spacing of Cleats ...			✓	✓	24				
Number of Tarpaulins ...				✓	2	✓			
<p>*Are wood fore and afters steel shod at all bearing surfaces? <i>None.</i></p> <p>Are battens and wedges efficient and in good condition? <i>Yes.</i></p> <p>Are tarpaulins in good condition and in accordance with rule requirements? <i>Yes.</i></p> <p>Are lashings provided in accordance with rule requirements? <i>Yes.</i></p>									

Particulars of any special features :—

Endorsement at first survey and at surveys for renewal of Certificate :—

The fittings and appliances are in accordance with the particulars shown on this form (or as now modified) and are in good condition.

