

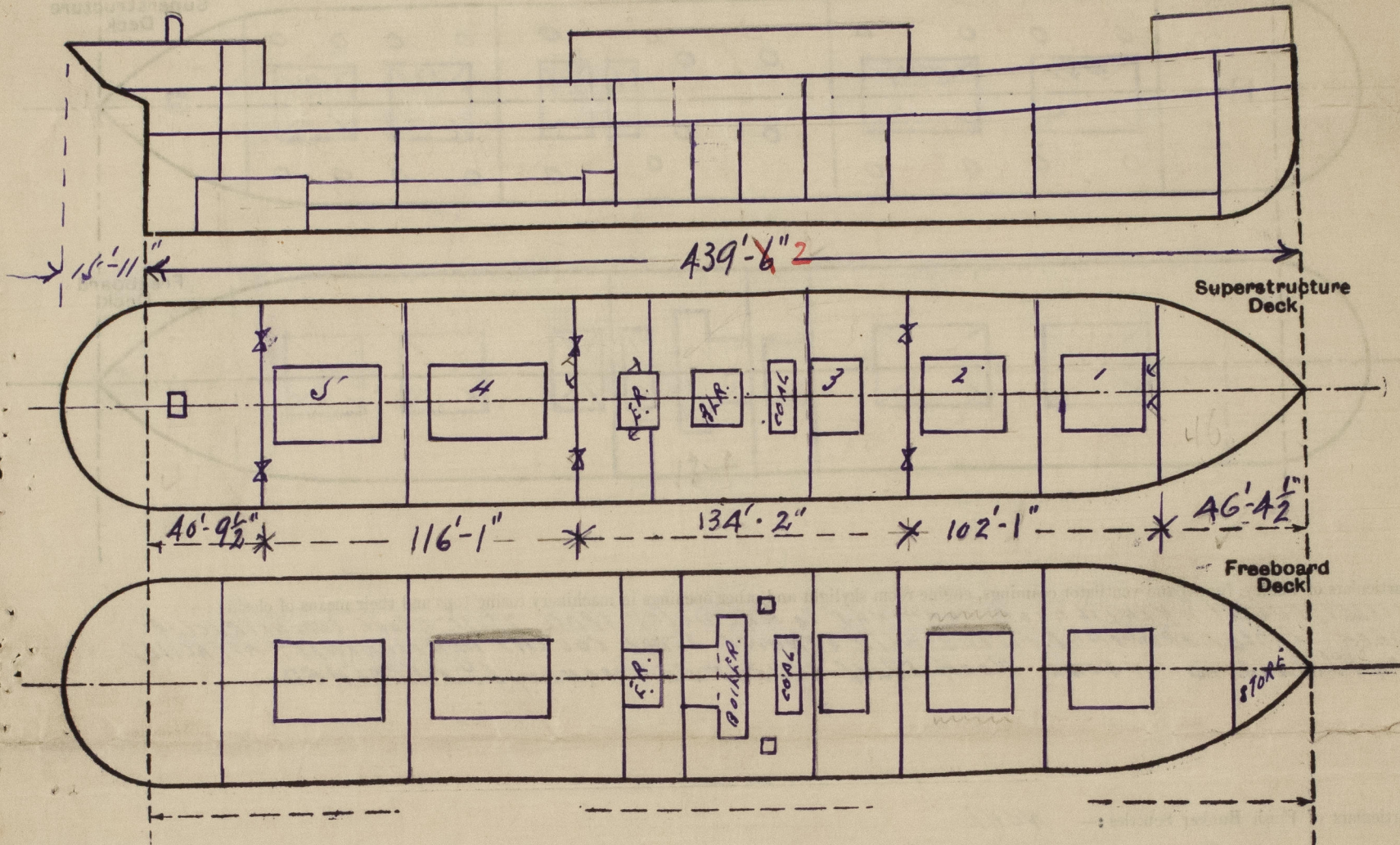
Lloyd's Register of Shipping.

SURVEYS FOR FREEBOARD.

(CONDITIONS OF ASSIGNMENT.)

Ship's Name *ex "ETHAN ALLEN" **EMPIRE*** Port of Survey *NEW ORLEANS, LA.*
Official Number *~~219,742~~ 167590 **PUMA*** Surveyor's Signature *J.S. Dodd.*
Nationality and Port of Registry *BRITISH. London.* Date of Survey *4TH. APRIL 1940.*

Disposition and dimensions of superstructures, trunks, deckhouses and machinery casings to be inserted in the diagrams and tabular statement : -



Particulars of Superstructures, Trunks, Casings, Deckhouses.

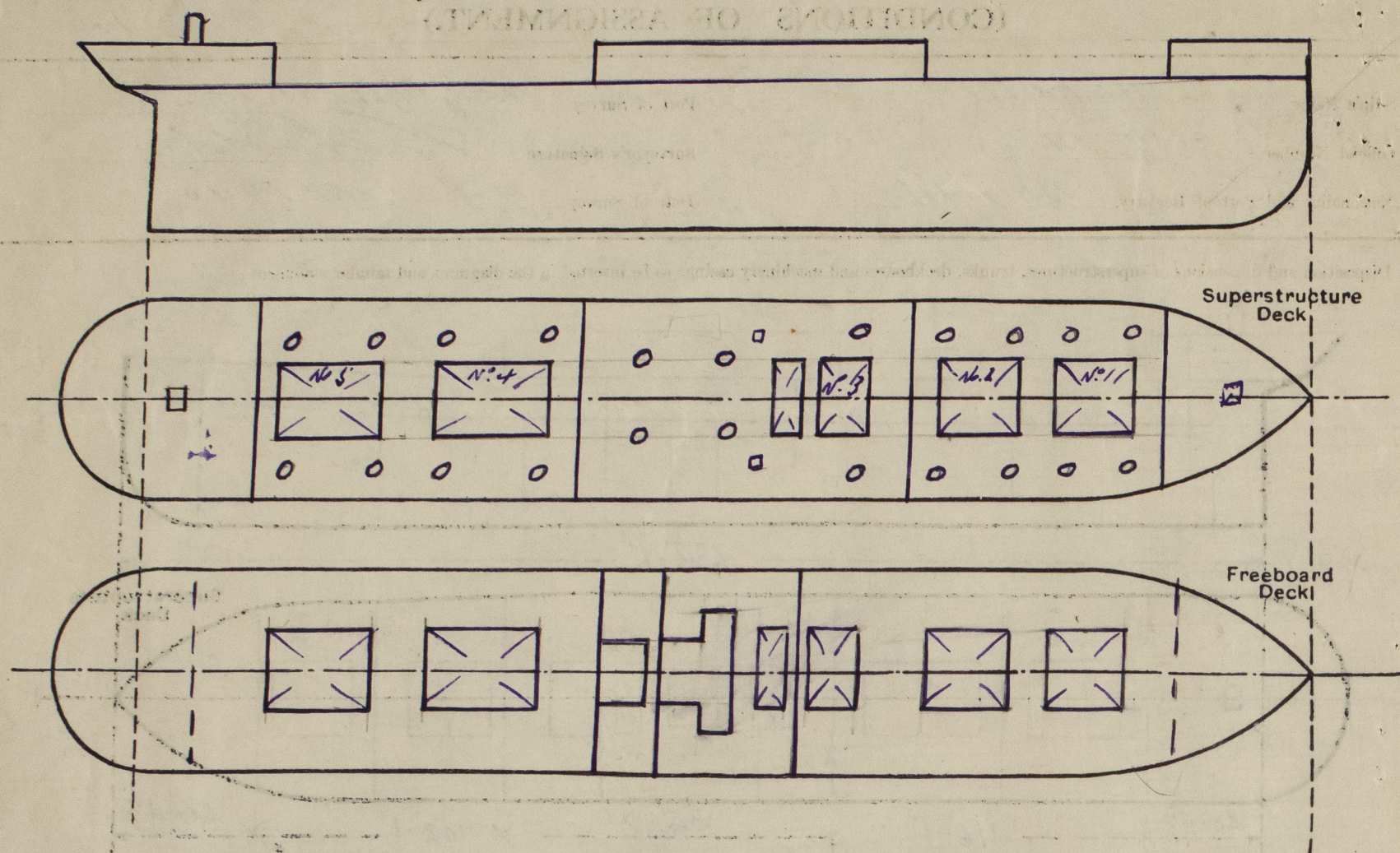
	Coaming	Plating	Stiffeners	Spacing	End Attachments of Stiffeners	Size of Openings	Height of Sills	Height of Casings
Poop Bulkhead ...	$\frac{1}{2}$ ✓	$\frac{1}{16}$ ✓	9x3 BA. 3 1/2 x 3 1/2 REV.	36" ✓	BRACKETED.		12" ✓	8' ✓
Raised Quarter Deck Bulkhead ...			x 50" thick.					8'-0"
Bridge, After Bulkhead ...	$\frac{1}{2}$ ✓	$\frac{1}{16}$ ✓	2-8 x 3 1/2 BA. HORIZONTAL.		✓		16" ✓	9'-11"
Bridge, Forward Bulkhead ...	$\frac{1}{2}$ ✓	$\frac{1}{2}$ ✓	8" x 3 1/2 BA x 50 thick.		BRACKETED.		16" ✓	9'-11"
Forecastle Bulkhead ...	$\frac{1}{2}$ ✓	$\frac{3}{8}$ ✓	3 1/2 x 3 1/2 REV. x 42" thick.		✓		16" ✓	8'-0"
Trunk, Aft ...			2-7 x 3 1/2 BA. HORIZONTAL.					8' ✓
Trunk, Forward ...			x 50 thick.					
Exposed Machinery Casings on Freeboard or Raised Quarter Decks ...								
Exposed Machinery Casings on Superstructure Decks ...								
Machinery Casings within Superstructures not fitted with Class I Closing Appliances ...								
Deckhouses on Flush Deck Ships ...								

Particulars of Closing Appliances (state if capable of being manipulated from both sides).

Poop Bulkhead ...	PORTABLE STEEL PLATES SECURED WITH HOOK BOLTS. ✓
Raised Quarter Deck Bulkhead ...	Water tight bolted plates.
Bridge, After Bulkhead ...	PORTABLE STEEL PLATES SECURED WITH HOOK BOLTS. ✓
Bridge, Forward Bulkhead ...	WATER TIGHT BOLTED PLATES. ✓
Forecastle Bulkhead ...	HINGED STEEL NON WATER TIGHT DOORS MAN ^d BOTH SIDES. ✓
Exposed Machinery Casings on Freeboard or Raised Quarter Decks ...	
Exposed Machinery Casings on Superstructure Decks ...	
Machinery Casings within Superstructures not fitted with Class I Closing Appliances ...	
Deckhouses on Flush Deck Ships ...	

PARTICULARS OF PROTECTION TO OPENINGS, ETC.

The following diagrams should be used to indicate the positions of cargo and coaling hatchways, gangway, cargo and coaling ports, ventilators, companionways, etc., which would affect the seaworthiness of the ship:-



Particulars of hatches, funnel and ventilator coamings, engine room skylight and other openings in machinery casing tops and their means of closing:-
 FIDLEY FUNNEL & VENTILATOR COAMINGS TO MACHINERY SPACE 4'-11" ABOVE SUPERSTRUCTURE DECK. FIDLEY OPENINGS FITTED WITH STRONG STEEL COVERS PERMANENTLY ATTACHED.
 SKYLIGHTS TO ENGINE ROOM STEEL COVERS PERMANENTLY ATTACHED.

Particulars of Flush Bunker Scuttles:- NONE

Particulars of Companionways:- COMPANION TO POOP SPACE OF STEEL RIVETED TO DECK PLATING. STEEL HINGED DOOR ON AFTER SIDE CAPABLE OF BEING MANIPULATED FROM EITHER SIDE. Sill 18" high.

Particulars of Ventilators in exposed positions on freeboard and superstructure decks:- STEEL COAMING RIVETED & WELDED TO DECK (CHOSED BY WOOD PLUGS AND CANVAS COVERS).

No	Position	Drain	Thickness	Height	Compt ventilated
1	Forehead	14"	.40"	.37"	F. P. Space
8	Fore well	23"	.38"	.36"	Holds and Tween Decks
6	Bridge M.	14"	.38"	.36"	" " "
1P.	"	21"	.38"	.30"	Dynamo Room
8	After Well	23"	.38"	.36"	Tunnel Escape
1	poop.	14"	.38"	.36"	Tunnel Escape

Particulars of Air Pipes in exposed positions on freeboard, raised quarter, or superstructure decks:- SUBSTANTIAL CONSTRUCTION. ALL IN EXCESS OF 18" FROM DECK TO OPENING AND WITH WOOD PLUGS ATTACHED.

No	Position	Drain	Height	Space Served	No	Position	Drain	Height	Space Served
1	Forehead	3 1/2 G.N.	19"	Fore Peak	1	Bridge M.	5"	1'-6"	Deep Tank
2	"	4"	24"	NO. 1 D. Tank	2	"	3 1/2"	1'-1"	D. D. Tank
2	Fore Well	4"	24"	NO. 2 " "	2	"	3 1/2"	1'-4"	"
2	"	6"	3 1/4"	"	2	After well	3 1/2"	2'-3"	"
X 2	"	4"	7'-0"	"	X 2	"	4"	4'-0"	"
2	Two Br. Space	5"	3'-6"	Deep Tank	2	poop	3"	1'-8"	"
2	Bridge Deck	4"	2'-6"	D. D. Tank	1	"	4"	1'-8"	After Peak

X Pipes stayed. All air pipes have G.N.S. fitted with wire gauge to air tanks, wood plugs other well

Particulars of Gangway Cargo and Coaling Ports:-

NONE

Particulars of Scuppers and Sanitary Discharge Pipes:- ALL DISCHARGES HAVE STORM VALVES IN GOOD ORDER FITTED AT SHIPS SIDE. ALL INLETS ARE ABOVE FREEBOARD DECK.

Particulars of Side Scuttles:- DEADLIGHTS FITTED - NONE BELOW FREEBOARD DECK.

Vertical distance of Sill of lowest Side Scuttle above top of keel

Particulars of Guard Rails:- EFFICIENT PIPE & CHAIN GUARD RAILS WITH WROG IRON STANCHIONS. Pins and chains fitted to alternate stanchions for securing in the deck sockets.

Particulars of Gangways, Lifelines, etc:- LIFE LINES PROVIDED.

Particulars of Freeing Arrangements.

	Length of Bulwark	Height of Bulwark	Size of Freeing Ports	Number each side	Area each side	Rule area each side
After Well ...	} OPEN RAILS					
Forward Well ...						

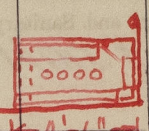
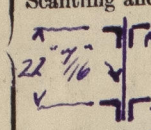
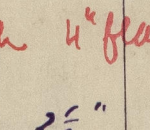
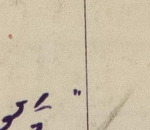
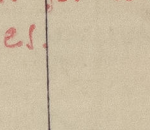
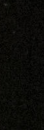
State position of each freeing port ... After Well:-

(F. and A. position and height above deck edge) Forward Well:-

State whether the freeing ports are fitted with shutters, bars, or rails, and give particulars of such:-

Additional area where sheer is less than standard.

PARTICULARS OF PROTECTION TO OPENINGS, ETC.

HATCHWAYS ON FREEBOARD AND SUPERSTRUCTURE DECKS.										
Description of Hatchway	No. 1.	No. 2.	No. 3.	No. 4.	No. 5.					
Dimensions of Hatchway	35' x 24'	36' x 24'	22' x 24'	48' x 24'	36' x 24'					
COAMINGS	Height above Deck ... 24" Thickness ... 1/2" Sides ... 1/2" Ends ... 1/2" Stiffeners ... 4 x 3 1/2" OA. Brackets, Stays ... 2 x 1 1/2" Sides, 2 x 1 1/2" Ends	Height above Deck ... 24" Thickness ... 1/2" Sides ... 1/2" Ends ... 1/2" Stiffeners ... 4 x 3 1/2" OA. Brackets, Stays ... 2 x 1 1/2" Sides, 2 x 1 1/2" Ends	Height above Deck ... 24" Thickness ... 1/2" Sides ... 1/2" Ends ... 1/2" Stiffeners ... 4 x 3 1/2" OA. Brackets, Stays ... 2 x 1 1/2" Sides, 2 x 1 1/2" Ends	Height above Deck ... 24" Thickness ... 1/2" Sides ... 1/2" Ends ... 1/2" Stiffeners ... 4 x 3 1/2" OA. Brackets, Stays ... 2 x 1 1/2" Sides, 2 x 1 1/2" Ends	Height above Deck ... 24" Thickness ... 1/2" Sides ... 1/2" Ends ... 1/2" Stiffeners ... 4 x 3 1/2" OA. Brackets, Stays ... 2 x 1 1/2" Sides, 2 x 1 1/2" Ends					Angle 3 1/2" x 3 1/2" x .36  17"
HATCH BEAMS	Number ... 6 Spacing ... 5'-1" Scantling and Sketch ...  4" thick 4" flange horizontal. Bearing Surface ... 3 1/2"	Number ... 4 Spacing ... 4'-6" Scantling and Sketch ...  4" thick 4" flange horizontal. Bearing Surface ... 3 1/2"	Number ... 4 Spacing ... 4'-6" Scantling and Sketch ...  4" thick 4" flange horizontal. Bearing Surface ... 3 1/2"	Number ... 5 Spacing ... 5'-4" Scantling and Sketch ...  4" thick 4" flange horizontal. Bearing Surface ... 3 1/2"	Number ... 4 Spacing ... 4'-6" Scantling and Sketch ...  4" thick 4" flange horizontal. Bearing Surface ... 3 1/2"				Stays at hatch sides are carriers for winch steam pipes.	
FORE AND AFTERS			None							
HATCH COVERS	Material ... Wood Thickness ... 2 3/4" How fitted ... F.P.A. Bearing Surface ... 3"	Material ... Wood Thickness ... 2 3/4" How fitted ... F.P.A. Bearing Surface ... 3"	Material ... Wood Thickness ... 2 3/4" How fitted ... F.P.A. Bearing Surface ... 3"	Material ... Wood Thickness ... 2 3/4" How fitted ... F.P.A. Bearing Surface ... 3"	Material ... Wood Thickness ... 2 3/4" How fitted ... F.P.A. Bearing Surface ... 3"					
Spacing of Cleats	24"	24"	24"	24"	24"					
Number of Tarpaulins	3	3	3	3	3					
*Are wood fore and afters steel shod at all bearing surfaces? <input checked="" type="checkbox"/> Are battens and wedges efficient and in good condition? <input checked="" type="checkbox"/> Are tarpaulins in good condition and in accordance with rule requirements? <input checked="" type="checkbox"/> Are lashings provided in accordance with rule requirements? <input checked="" type="checkbox"/>										

Particulars of any special features:—

Small Hatches
Hatch to store under fo'c's 4'-6" x 3'-4" coaming 18 x 50, 3" wood cross tarpaulin and battening arrangements.
Circular access hatch to chain locker, 10' diam, cast steel coaming 2 1/2" above deck with W.T. cover, 3 clips.
Coaming hatches on Bridge Deck abreast boiler casing 1P and 1S, 10'-0" x 6'-3" 22 x 38" coaming.
With 1-beam 9" in depth x 38" and 4- 2 1/2" x 1 1/2" x 40" angles and a steel division 3'-0" from after end. 2 1/2" cover, 2-tarpaulins and battening arrangements.
Bridge Port side against accommodation house, hatch 5'-0" x 2'-4" used as companion-way to refrigerated in bridge tween deck, 15" x 38 coaming, 2 1/2" wood hatch cover hinged from casing house side, 2 tarpaulins and battening arrangements.

Endorsement at first survey and at surveys for renewal of Certificate:—

The fittings and appliances are in accordance with the particulars shown on this form (or as now modified) and are in good condition.



© 2020

Lloyd's Register Foundation